

# Pala Energy Options Analysis

Pala Band of Mission Indians



Shasta Gaughen, PhD

Director, Pala Environmental Department

Office of Indian Energy Program Review

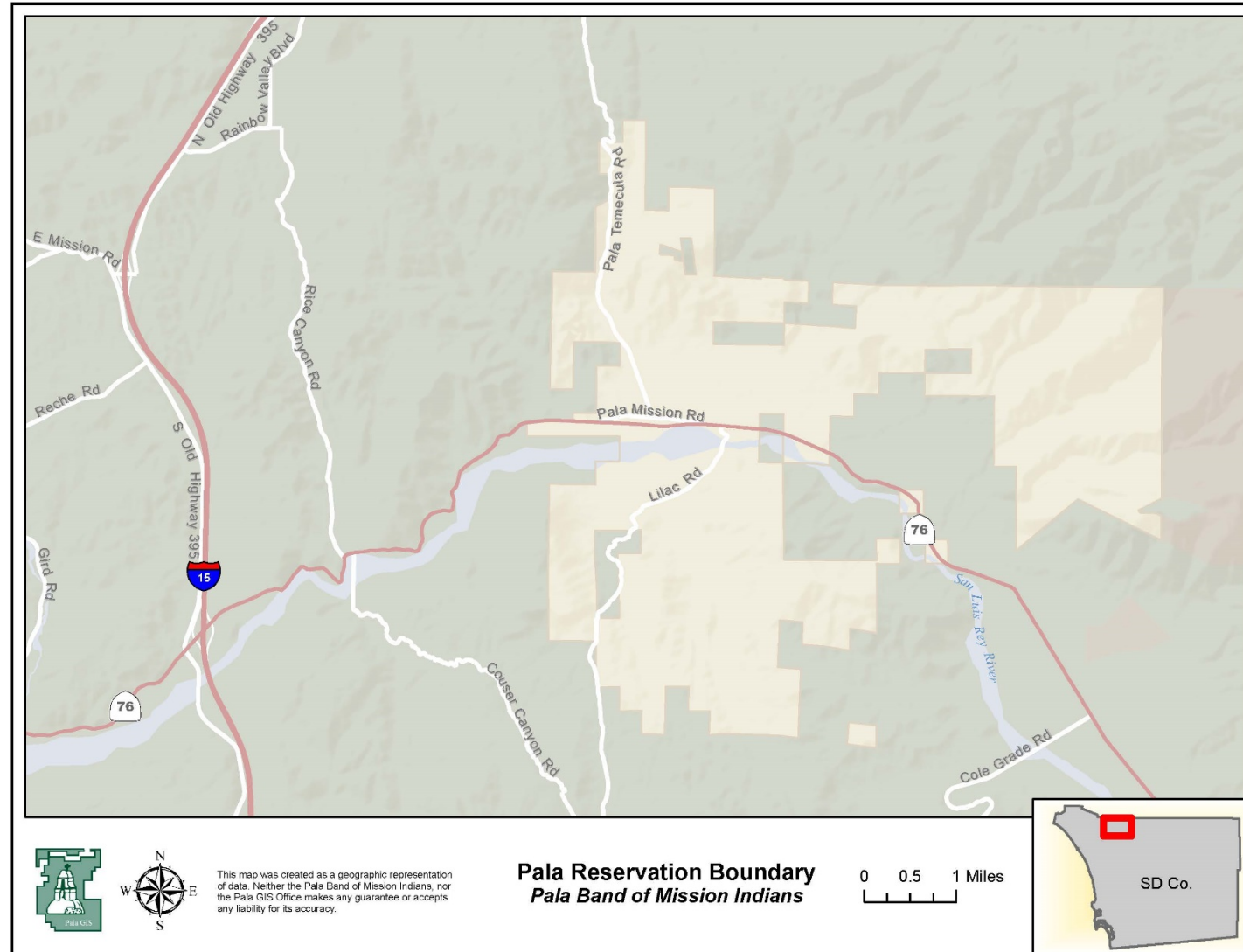
November 21, 2019



# The Pala Reservation

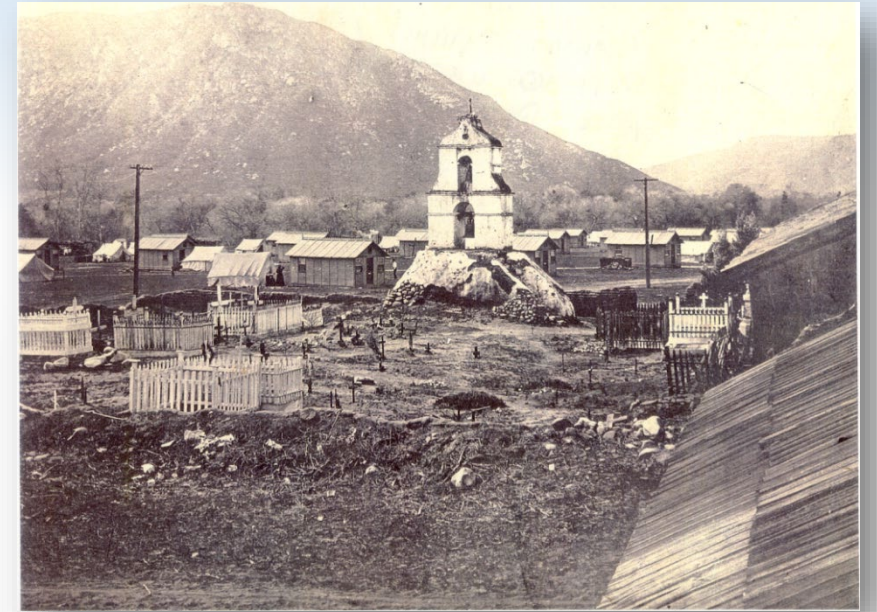


# The Pala Reservation





# Pala Reservation History





# Pala Today



# Pala Fire Station Solar Project



- The projected production over a 25 year period will result in a utility savings of approximately \$52,000/year or \$1.3 million over the life of the system.
- CO<sup>2</sup> emission reductions are the equivalent of planting 70,000 trees, saving 300,000 gallons of fossil fuels, recycling 10,000 tons of waste and displacing the CO<sup>2</sup> produced by 350 homes.
- To date, the system has generated 426,584 kWh of electricity and offset 533,231 pounds of CO<sup>2</sup>.



# Pala's Energy Goals



Goal: Develop a long-term energy strategy to maximize Pala's use of renewable energy resources and enhance community resilience and self-sufficiency.

# Pala's Energy Goals

Potential Energy Goal / Value
Strive toward energy independence and self-reliance
Strengthen tribal sovereignty and self determination
Maximize energy reliability and minimize outages
Increase short-term economic prosperity
Increase long-term economic prosperity
Maximize renewable energy use and/or generation
Advance economic development and diversification
Create jobs and offer workforce development opportunities for tribal community members and/or others
Maximize use of alternative fuels and alternative fuel vehicles
Protect and enhance the environment
Protect and enhance human health
Protect and enhance cultural resources
Minimize greenhouse gas (GHG) emissions to mitigate worldwide climate change impacts
Minimize the use of non-renewable and fossil fuels in buildings and transportation
Minimize dependency on nonrenewable fuels during power outages
Be a leader and example in advancing clean energy
Increase control over local energy infrastructure and assets
Build intertribal partnerships through intertribal energy initiatives



# Pala's Energy Strategy

- Analyze current energy use

## Cost Comparison by Features

The displayed estimates have been updated based on your answers from the energy use questionnaire, currently approved prices (rates) and your past 12 months of electricity use.

Time of Use Plus (TOU-A-P)	Time of Use Plus (TOU-A2-P)	Time of Use (TOU-A2)	Time of Use Plus (TOU-A3-P)
\$16,101 Estimated cost per year	\$15,298 Estimated cost per year	\$15,630 Estimated cost per year	\$15,997 Estimated cost per year
N/A Estimated savings per year	\$803 Estimated savings per year	\$471 Estimated savings per year	\$104 Estimated savings per year
1 Year Commitment	1 Year Commitment	1 Year Commitment	1 Year Commitment
	N/A	N/A	N/A
Reduce Your Use event days	Reduce Your Use event days	No Reduce Your Use event days	Reduce Your Use event days

# Pala's Energy Strategy

- Identify alternatives



# Pala's Energy Strategy

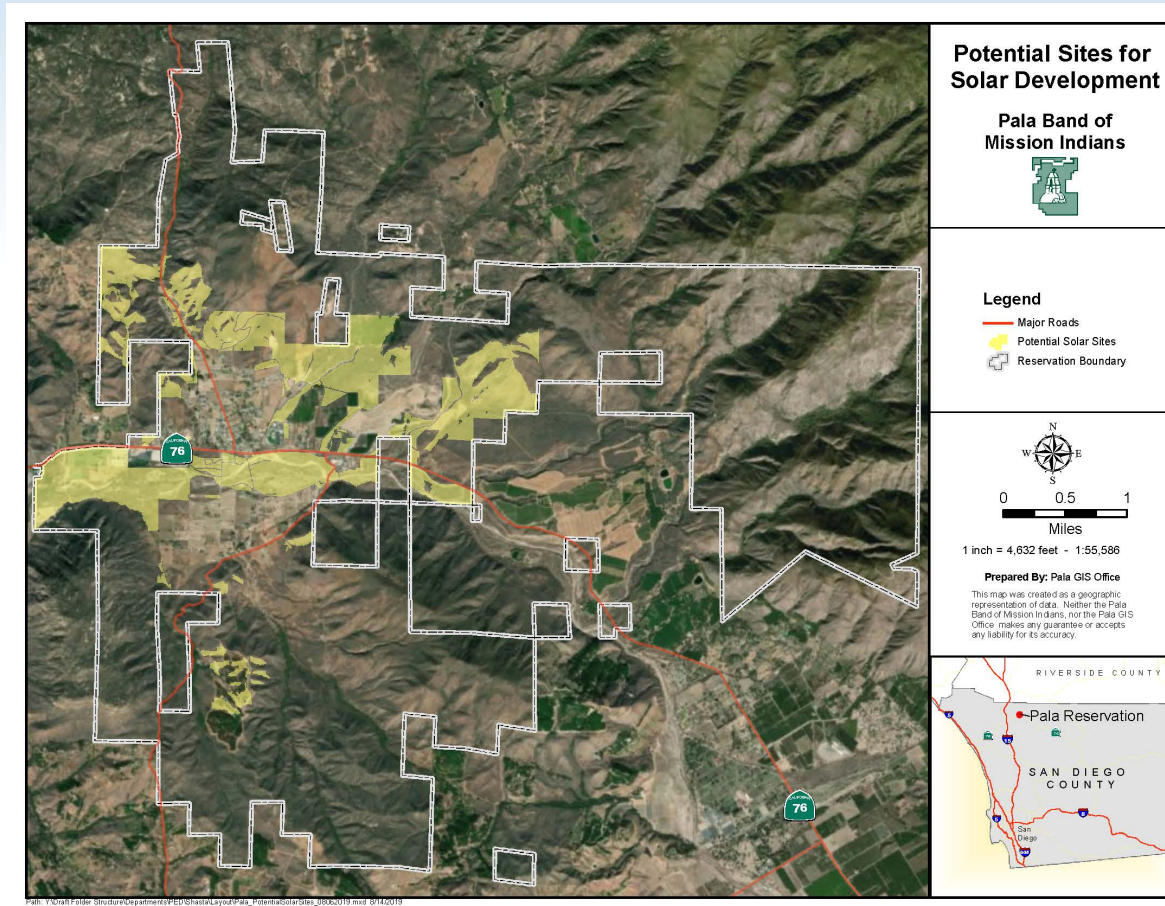
- Review with community stakeholders





# Pala's Energy Strategy

- Assess feasibility



# Pala's Energy Strategy

- Produce report



# Questions? Comments? Donuts?

Shasta Gaughen, PhD  
Director

Pala Environmental  
Department

[sgaughen@palatribe.com](mailto:sgaughen@palatribe.com)

760-891-3515

<http://ped.palatribe.com>

