

Samish Indian Nation: Climate Resilience Planning

Background and Next Steps

*Todd Woodard, Director, Department of Natural Resources
November 17, 2017*

Climate Change Adaptation Planning

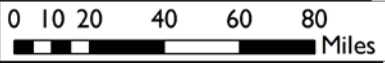


The Salish Sea and Samish Traditional Territory



The Salish Sea

The Salish Sea extends from the north end of the Strait of Georgia to the south end of the Puget Sound and west to the Mouth of the Strait of Juan de Fuca



Who We Are

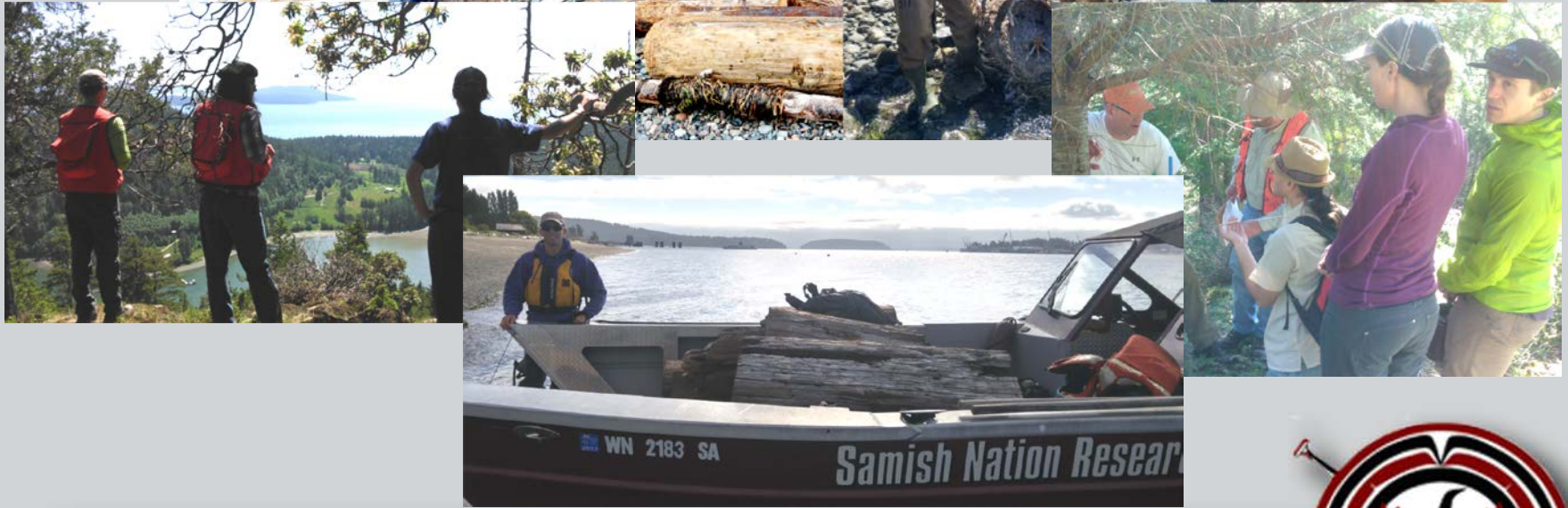


Climate Change Adaptation Planning



Lengtixw tse Schténgexwen Á7leng

House of Watching Over All the Territory



Climate Change Adaptation Planning



Goals

- Position the Samish Indian Nation to be a climate resilient community taking proactive steps to prepare for projected climate change impacts.
- Incorporate climate information into decision-making and planning.
- Build resilience into all Samish programs and services, policies, operations and infrastructure.
- Support sustainable and flexible solutions aimed at responding to or lessening the impacts of climate change.

Climate Change Adaptation Planning



Resiliency Planning: Project Overview

Phase One: Framework and Planning Priorities

BIA Grant (2017)



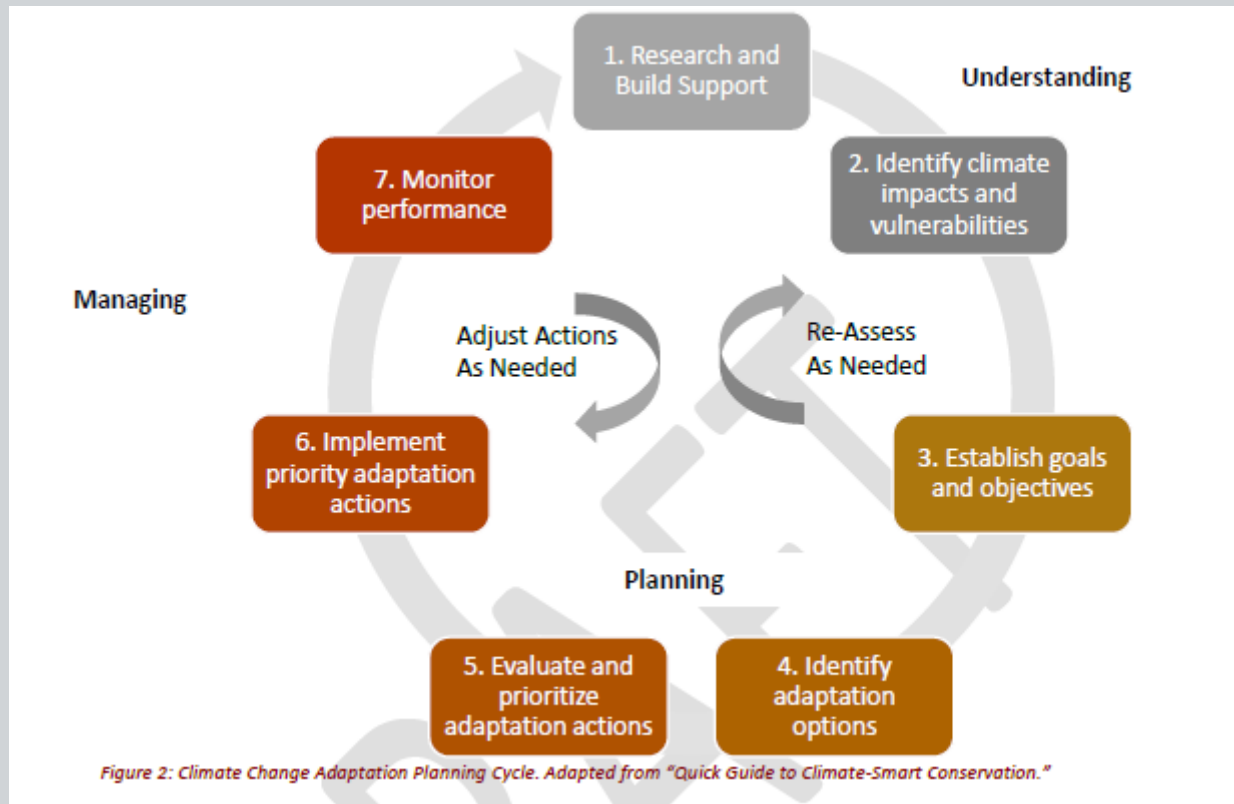
Phase Two: Resiliency Plan and Implementation

DOE Grant (2018-2019)

Climate Change Adaptation Planning



Planning Framework



Climate Change Adaptation Planning



Communication and Decision-Making

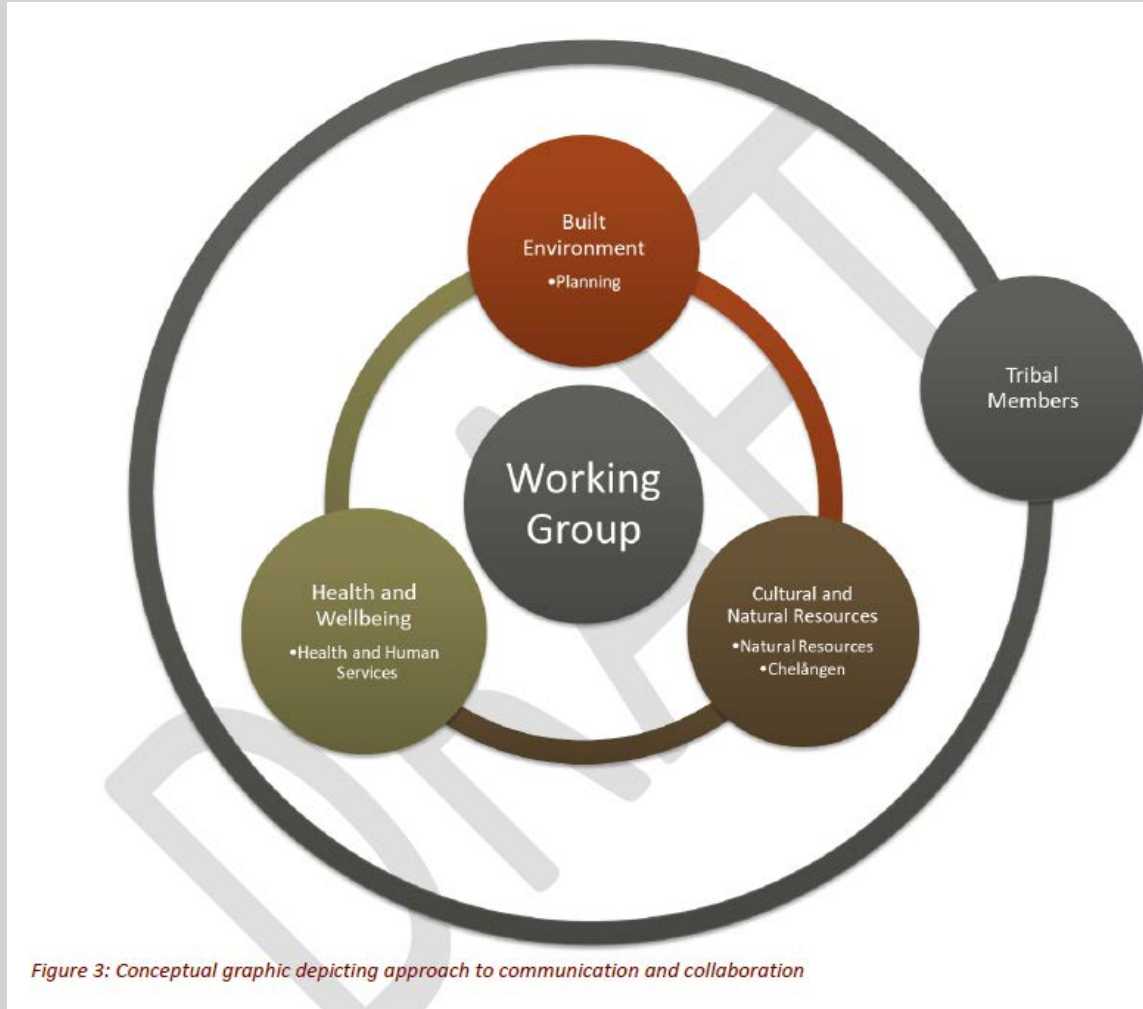
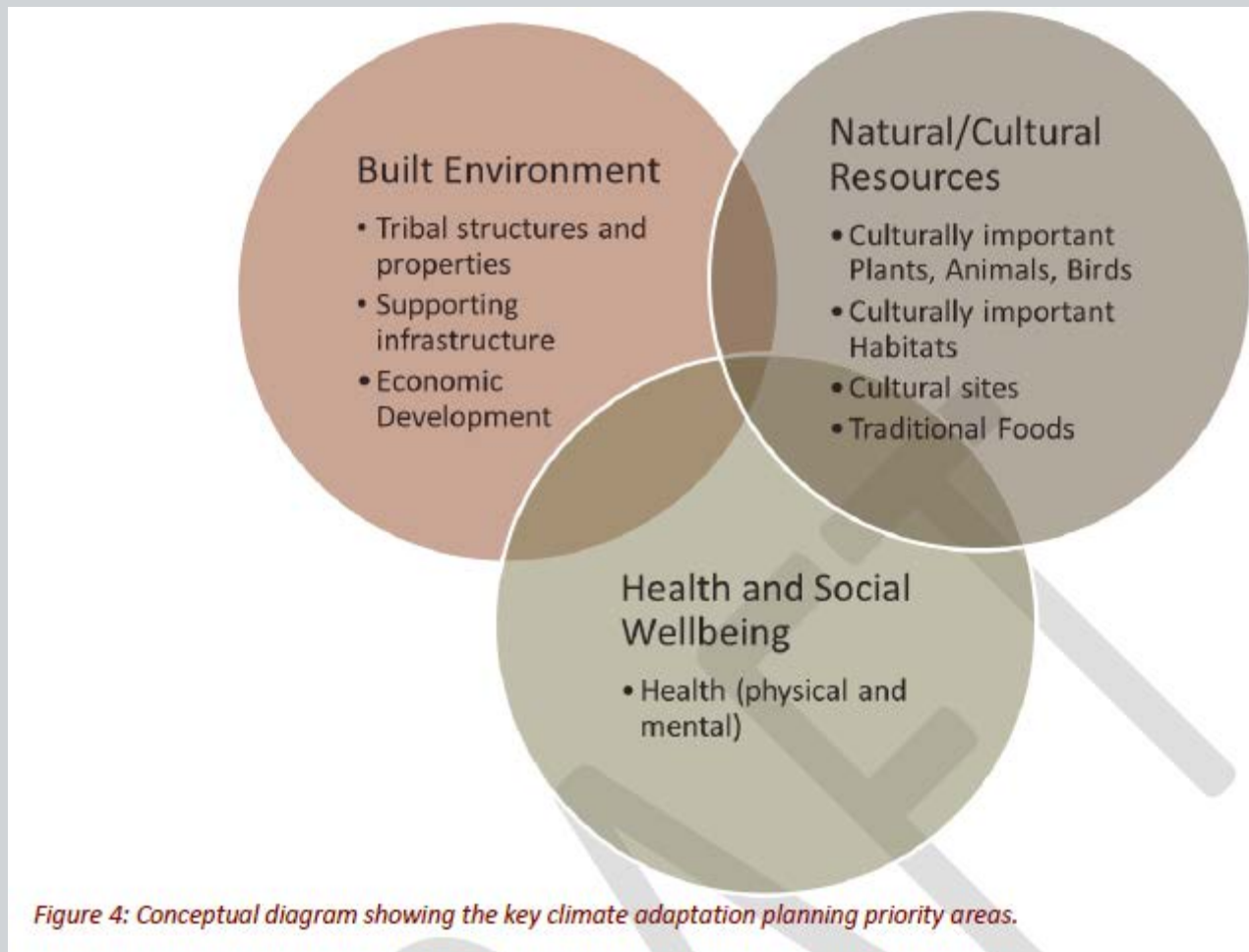


Figure 3: Conceptual graphic depicting approach to communication and collaboration

Climate Change Adaptation Planning



Key Planning Areas



Climate Change Adaptation Planning

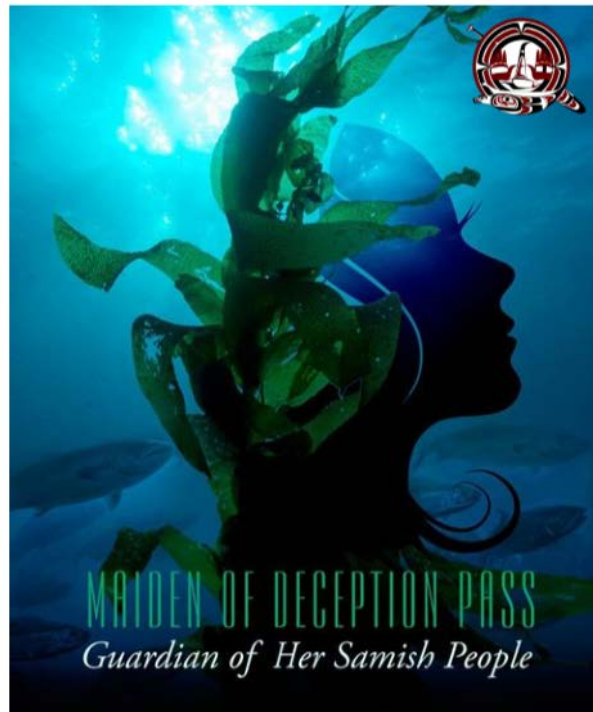


Incorporating Traditional Stories



HOW EAGLE BROUGHT WATER TO THE WORLD

As the inheritors of the Samish culture and teachings from our Old Ones, we have put together these words to help children think about the teachings that can be found in our traditional stories, and how they are relevant today. This story asks our youth to consider the value of cool, clean water and what they can do to maintain this gift.



As the inheritors of the Samish culture and teachings from our Old Ones, we have put together these words to help children think about the teachings that can be found in our traditional stories, and how they are relevant today. This story asks our youth to reflect on the kinship between the Samish people and the sea, and what we can do to treat the sea with respect.



SALMON BOY

As the inheritors of the Samish culture and teachings from our Old Ones, we have put together these words to help children think about the teachings that can be found in our traditional stories, and how they are relevant today. This story asks our youth to consider how to treat the Earth and its creatures respectfully.

Climate Change Adaptation Planning



Phase One Products



Samish Indian Nation

Climate Adaptation Planning Framework



November 2017

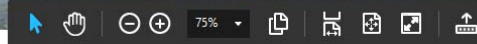


Samish Indian Nation

Climate Change State of Scientific Knowledge



November 2017



Samish Indian Nation

Climate Adaptation Planning Priorities



November 2017



Climate Change Adaptation Planning



Phase One Key Findings



Figure 5: Graphic illustrating potential sea level rise impacts to Fidalgo Bay Resort by 2100, based on a High Emissions Scenario. For illustrative purposes only.

Climate Change Adaptation Planning



Phase One Key Findings

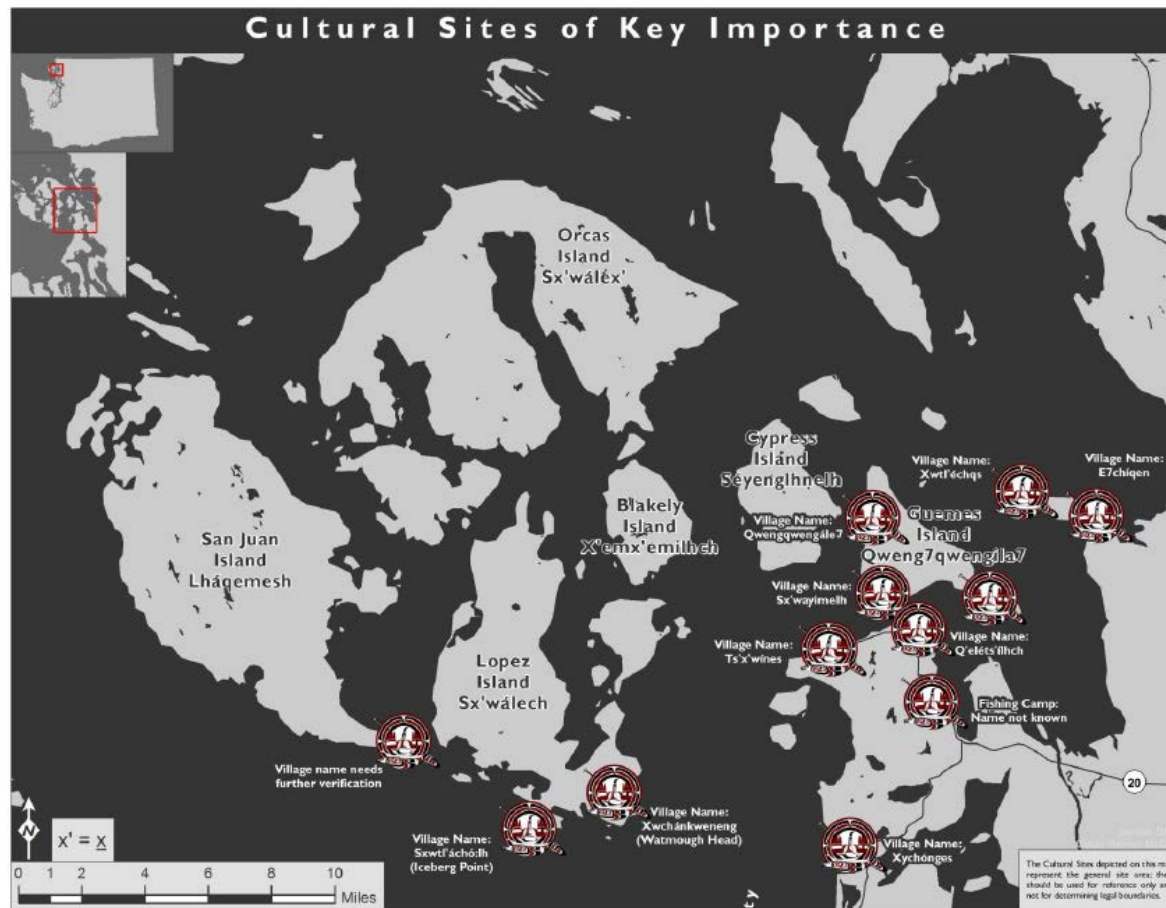


Figure 9: Map of key cultural importance that are predicted to be impacted by climate change.

Climate Change Adaptation Planning




Sample Communication Materials

SAMISH PREPARES

OUR PROMISE TO FUTURE GENERATIONS

We want our children and their children to be healthy, enjoy our natural resources and cultural traditions. We identify and prepare for the impacts of a changing world and promise for future generations.


The first step is to understand natural conditions.




We are already seeing changes in our local climate.

These changes are expected to accelerate and become more frequent in the coming decades. Even if we stop emissions of greenhouse gases in the atmosphere would still take many years to see a result, we have 'locked in' changes to our climate that will affect our children.


Our changing climate will affect our natural resources and quality of life.



WATER RESOURCES




COASTAL FLOODING



NATURE'S BENEFITS

We must act SOON to prepare for these changes.

- ✿ Impacts are already being felt and it takes time to put a plan in place.
- ✿ The impacts are local – you and your family are on the front lines.
- ✿ Even if emissions stabilize, climate change impacts will last many years.
- ✿ Preparation can reduce costs and improve effectiveness.



We all want good health for ourselves and our children. Climate change is already impacting our health. We can plan now to avoid some of the worst impacts and ensure our children and their children have a healthier world tomorrow.

6


WAYS CLIMATE CHANGE HARMS HEALTH among the Samish Indian Nation

Conserving the Southern Resident Killer Whales

"As the killer whale goes, so goes our world" - Ken Hansen 2001


Our Circa Family

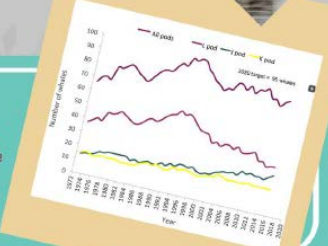
The Samish recognize other species in nature as part of an extended family to whom we are related and have responsibilities. We have long understood the significance of the Southern Residents to this region.



Range/Distribution


The Southern Resident Killer Whales (SRKW), or Orcas, are actually a large extended family comprised of three pods: J, K, and L pods. The SRKWs are frequently seen, from spring through fall, in the protected inshore waters of the Salish Sea.






Despite recent births in the second half of 2015 and beginning 2016, there has been a net loss of four SRKWs since 2011. This trend, along with the continued decline of Chinook salmon and the noted appearance of emaciation among members of the local pods, are reasons for concern.


Key Challenges: Listed as endangered in both the United States and Canada, and their population is closely tied to the overall health of the ecosystem. Key threats include:



Prey Availability




Pollution and Contaminants



Vessels and Noise

<https://www.epa.gov/samish-sis/southern-resident-killer-whales>



Phase Two-The Path Forward

Phase One: Framework and Planning Priorities

BIA Grant (2017)

Phase Two: Resiliency Plan and Implementation

DOE Grant (2018-2019)

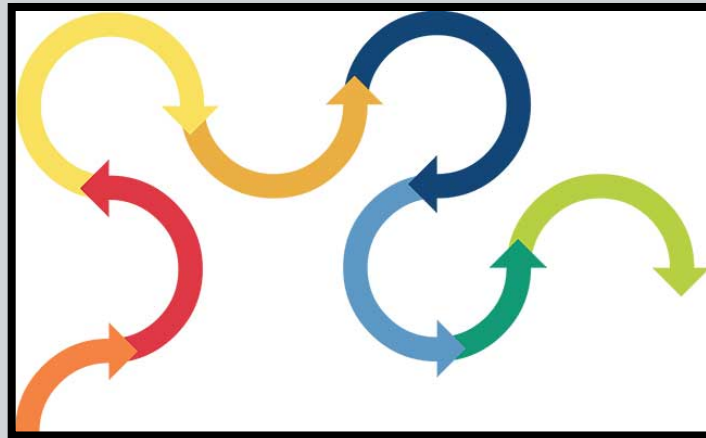


Climate Change Adaptation Planning



Phase Two-The Path Forward

- Utilizing Current DOE funding we have the following goals over the next 2 years:
 - *Complete and refine the Phase One Process*



Climate Change Adaptation Planning



Phase Two-The Path Forward

- **Complete the Samish Tribal Risk Assessment**
 - *Research potential climate change effects on all identified concerns from Phase one*

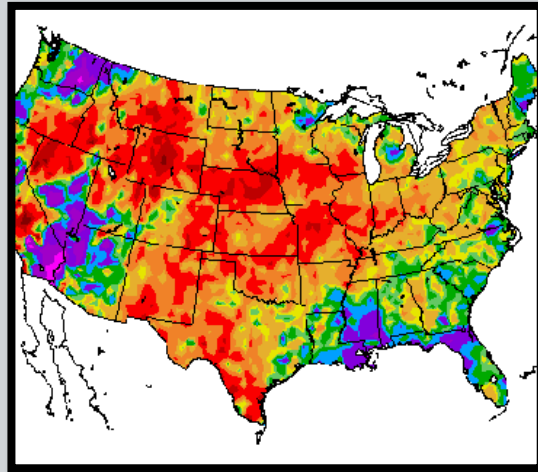


Climate Change Adaptation Planning



Phase Two-The Path Forward

- **Complete Samish Tribal Climate Adaptation Plan**
 - *Once risk assessment is done, make Adaptation recommendations specific to Tribal concerns*



Climate Change Adaptation Planning



Coordination with Other Plans

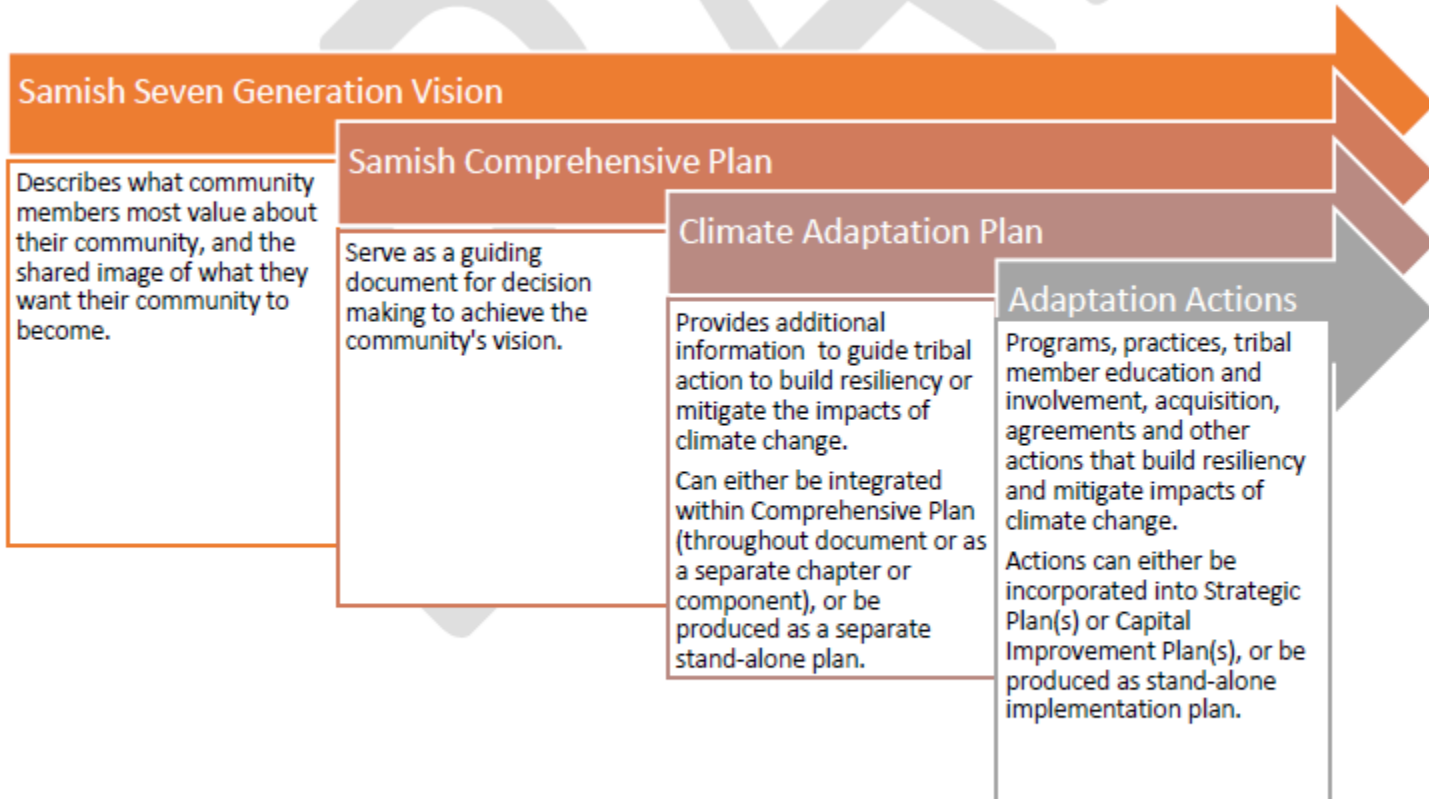


Figure 6: Conceptual Diagram of Samish Tribal Nation Coordinated Planning

Climate Change Adaptation Planning



Schedule

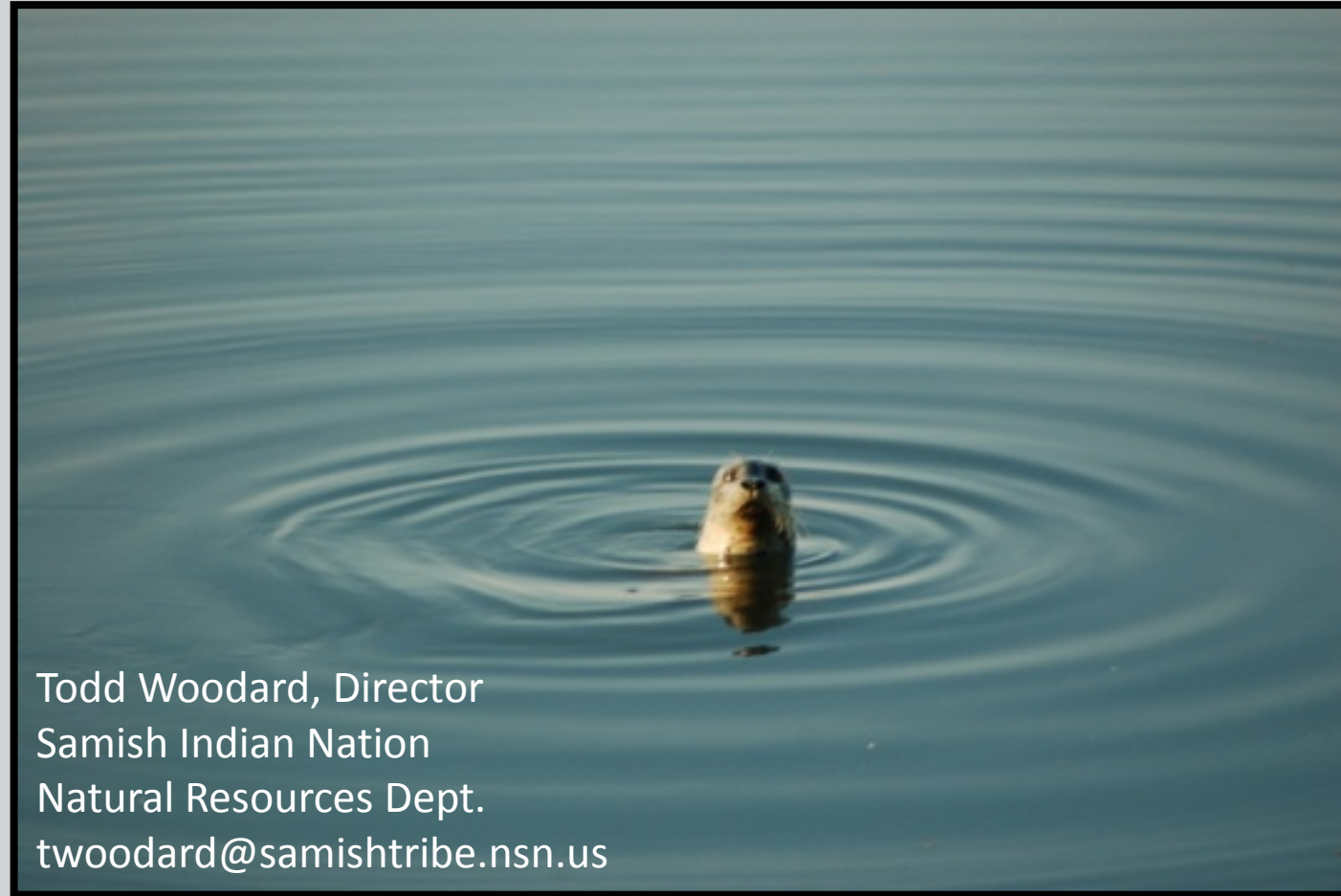
Table 1: Preliminary Schedule for Adaptation Planning Efforts

Task	Description	Anticipated Schedule
Vulnerability and risk assessment	Perform Vulnerability and risk assessments of impacted/potentially impacted sectors of importance	Summer-2018
Goals and objectives	SMART resilience goals for high priority sectors set	Fall-2018
Adaptation Actions	Research, develop, assess and select Resilience actions	Summer-2019
Samish Climate Resiliency Plan	Samish Climate Resiliency Plan adopted by Tribal Council and mainstreamed across all Tribal programs	Fall-2019
Implementation	Annual work plan and monitoring efforts	Fall-2019

Climate Change Adaptation Planning



Questions??



Todd Woodard, Director
Samish Indian Nation
Natural Resources Dept.
twoodard@samishtribe.nsn.us

Climate Change Adaptation Planning

