



Improving Energy Efficiency and Self-Sufficiency on the Pechanga Indian Reservation

MARGIE SCHAFF,

ATTORNEY FOR PECHANGA TRIBAL UTILITY

MARGIESCHAFF@COMCAST.NET 303-443-0182

Pechanga Tribal Utility

- Pechanga previously performed extensive analysis and as a result formed the Pechanga Tribal Utility (“PTU”), which began providing electric service to the Tribe’s enterprises and government center on October 1, 2017
- On time and under budget



Existing Pechanga Tribal Utility Loads



Existing Pechanga Tribal Utility Infrastructure

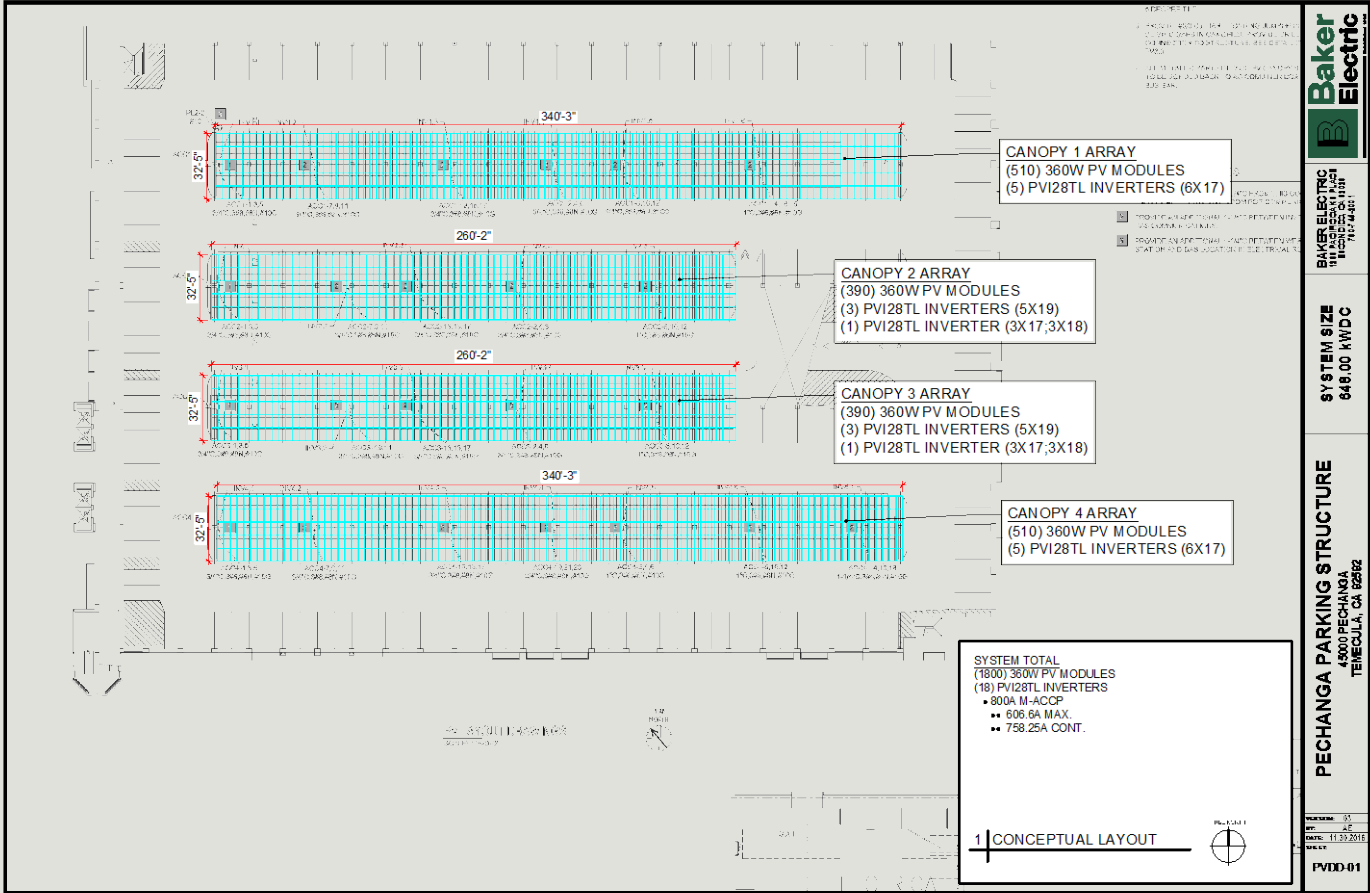


New Tribal Utility Infrastructure Construction



Tribal Utility Completed Plans

- Larger Solar Project
- Numerous available energy audits and proposed energy efficiency projects
- Microgrid Grant Application submitted to the California Energy Commission
- Natural Gas and Propane Projects



Description of 2017 DOE Grant Project

This project will study the feasibility and identify the preferred options necessary to allow the Pechanga Tribal Utility to carefully and thoughtfully expand from providing electrical service to the Tribe's commercial enterprises and government center loads to also providing electrical service to the Tribe's over 300 residential loads and potential future non-tribal commercial loads on the reservation.

Our goal is to reduce overall costs to consumers by at least 8¢/kWh.

DOE Project Reports

Three reports will be generated by this project to inform business planning and decision-making for the proposed PTU expansion. The reports will include 1) Loads and Demand Side Options, 2) Distribution System Expansion and 3) Power Supply.

Reports generated using DOE funding will clarify previous load estimates, determine the financial feasibility of competing with Southern California Edison and will identify options for reducing demand.

Based on the reports, we will then address costs for acquiring and/or constructing distribution facilities and analyze the options for wholesale power supply needed to meet the loads (supply side options).

Questions?
