

Bioenergy Technologies Office

**2017 Program Management
Review**

Co-Optima Response

Alicia Lindauer

Arlington, Virginia

July 13, 2017

DMT

F. Michael McCurdy – ICF Inc.

Andrea Slayton – Slayton Consultants

A&S

Troy Hawkins – Eastern Research Group, Inc.

Candace Wheeler – General Motors (Ret.)

Conversion

Brandon Emme – ICM, Inc.

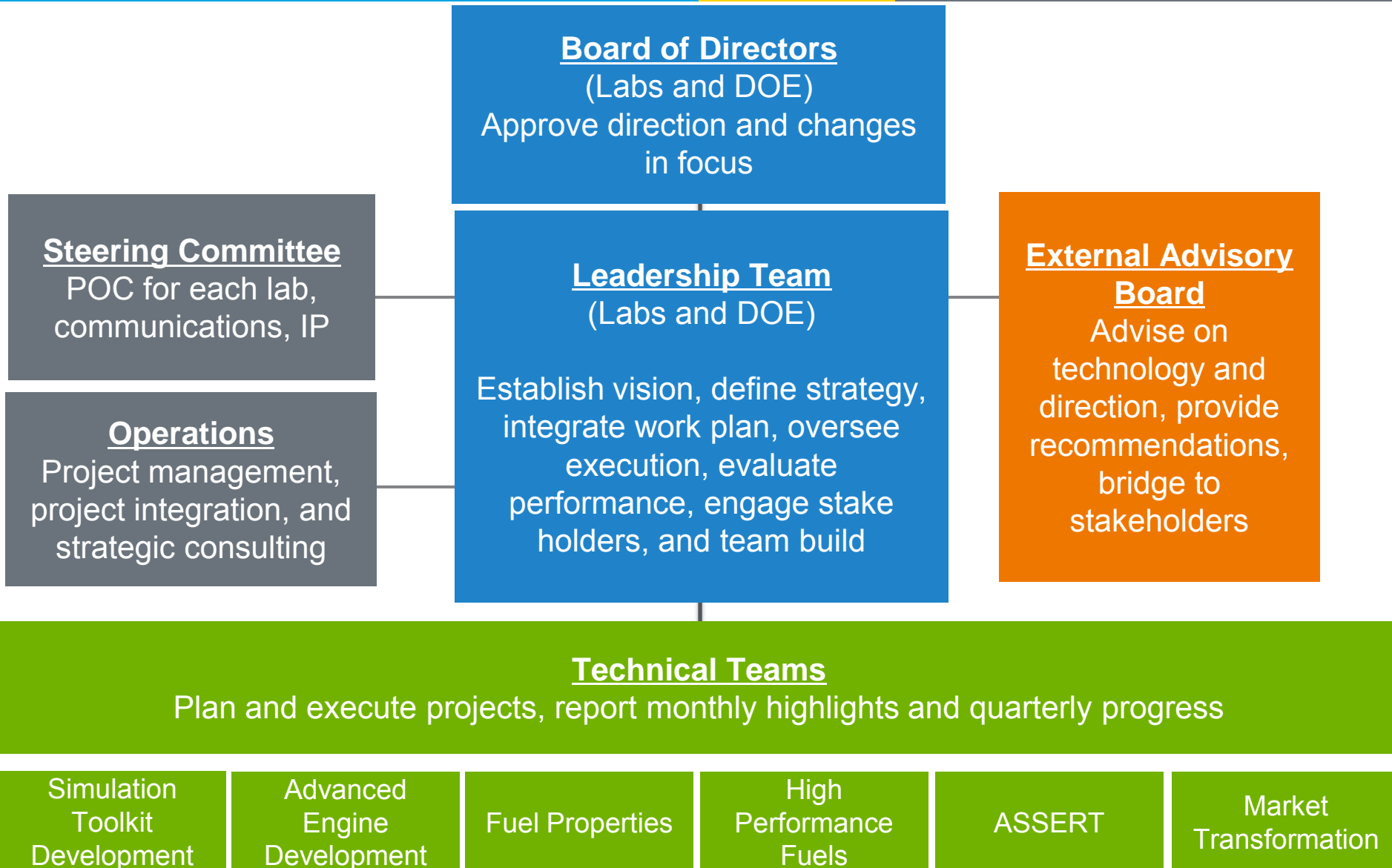
Phillip Marrone – Leidos

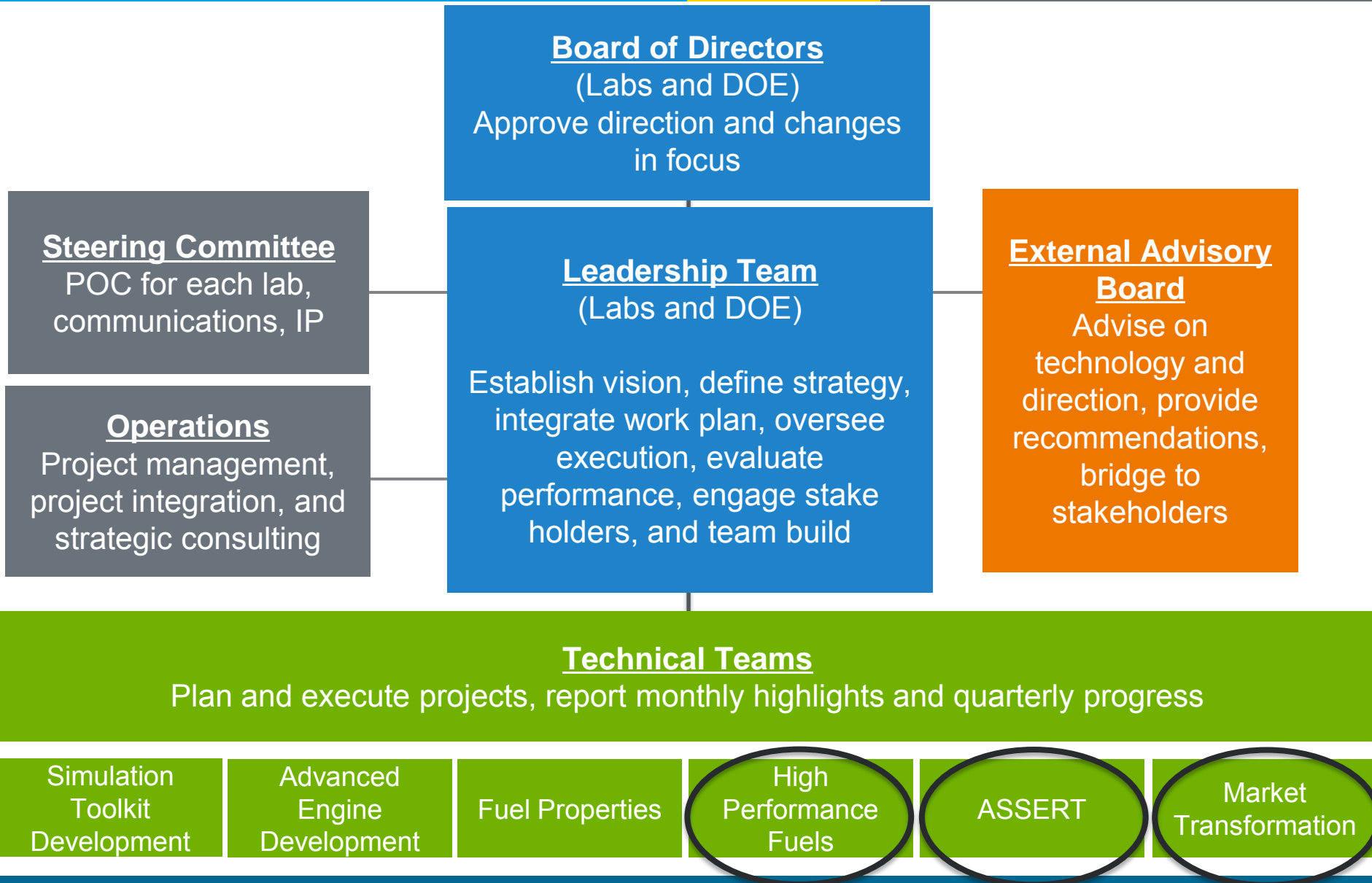
- Potential value and impact of work is clear
 - Benefits of fuel properties database and modeling/simulation tools
- Innovative collaborative approach undertaken by national Labs
- Numerous synergies within BETO/VTO
 - Spillover benefits to both transportation and biofuels sectors
- Poised to generate wealth of new data
- Allows for fuels and engine technologies to mature in development together



Co-Optimization of
Fuels & Engines







Teams	FY16 Budget	FY17 Budget
Task A: High Performance Fuels	\$9,500	\$7,100
Task B: ASSERT	\$2,200	\$2,200
Task C: Market Transformation	\$1,400	\$1,400
Task D: Co-Optima Leadership Team	\$1,200	\$1,100
Total	\$14,000	\$12,000



Co-Optimization of Fuels & Engines

	FY16 Budget	FY17 Budget
BETO	\$14,000	\$12,000
VTO	\$12,000	\$12,500
Total	\$26,000	\$24,500

3.7% of total BETO Budget
Budget shown in \$K

RECOMMENDATION: Develop a Risk Matrix for Thrust I Market Transformation

- Co-Optima project could benefit from producing a risk matrix of the adoption risks and then adjusting near term work to mitigate the risks described
- More emphasis in strategic planning for Market Transformation area as handoff from Co-Optima to the private sector

RESPONSE:

- Will develop risk matrix
- Working to develop a program-level vision for market transformation that fits into the early TRL focus
- Restructuring market transformation activities to sharpen impact

RECOMMENDATION: Source Candidate Materials from BETO Conversion & DMT Teams

- Sourcing materials from DMT and Conversion portfolio partners could free up resources which could be redirected into strengthening the dataset and Market Transformation efforts
- Opportunities exist for better integration with the BETO DMT and Conversion programs

RESPONSE:

- Working with Conversion team to coordinate efforts, understand linkages and ensure no duplication
- Sourcing molecules and fuel mixtures from commercial source and using surrogates when possible for cost effectiveness
- Source from Conversion & DMT projects when cost and timing allow

RECOMMENDATION: Add Regulatory Issues to the ASSERT Models

- Models address environmental and economic issues well, addition of a regulatory block within the models could make them much more robust.

RESPONSE:

- Regulatory issues addressed implicitly through policy and regulatory variables in ASSERT Models (BSM, ADOPT)
- No current plans to develop new models
- Considering bringing market transportation analysis under ASSERT