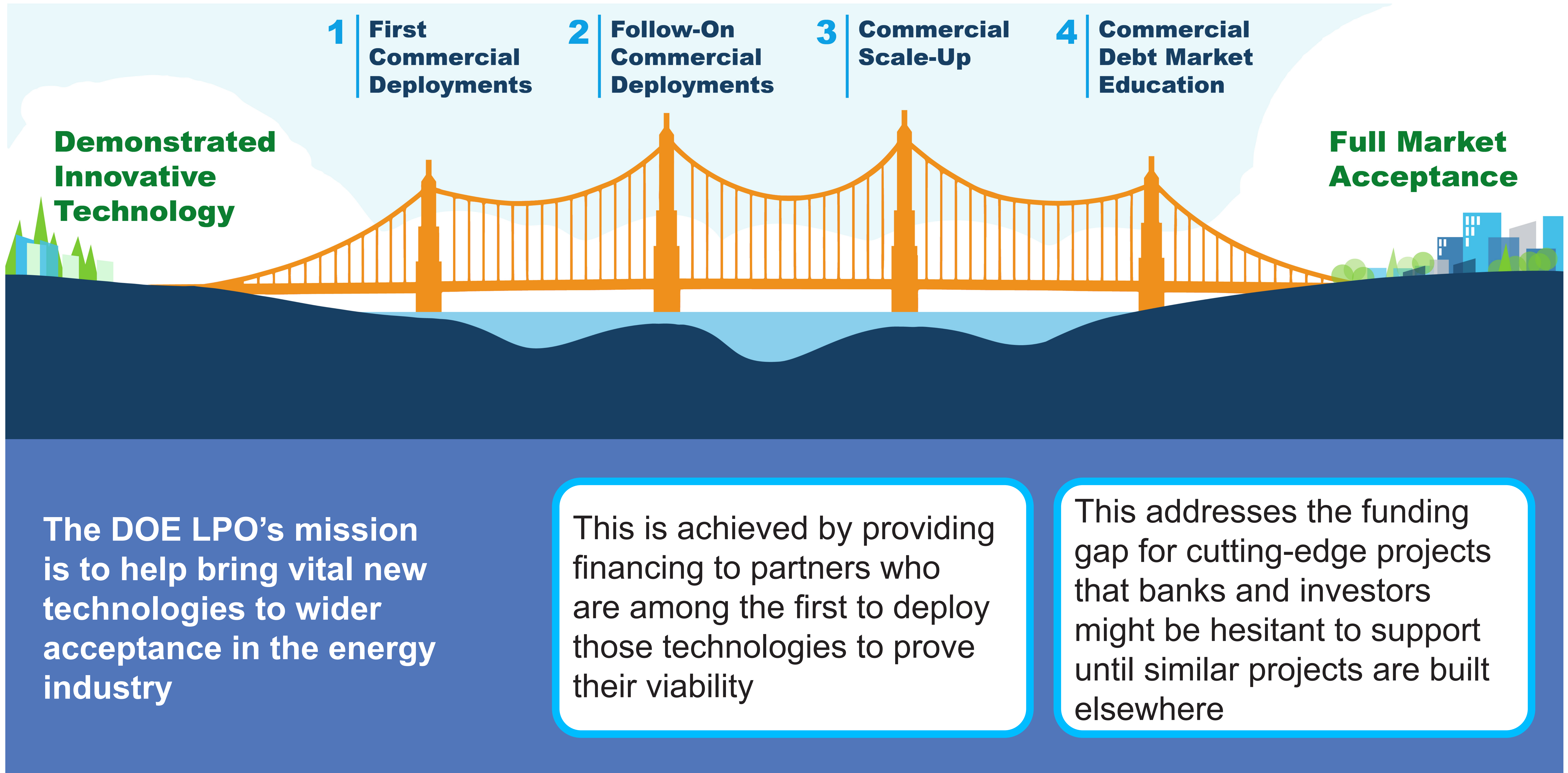


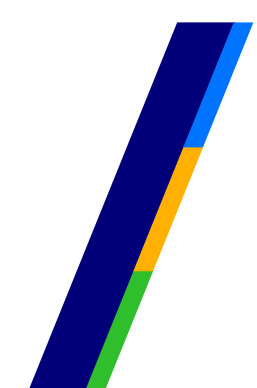


**PHASE 1 GRAIN BELT EXPRESS  
TRANSMISSION LINE PROJECT EIS  
FEBRUARY 2025 PUBLIC MEETINGS**

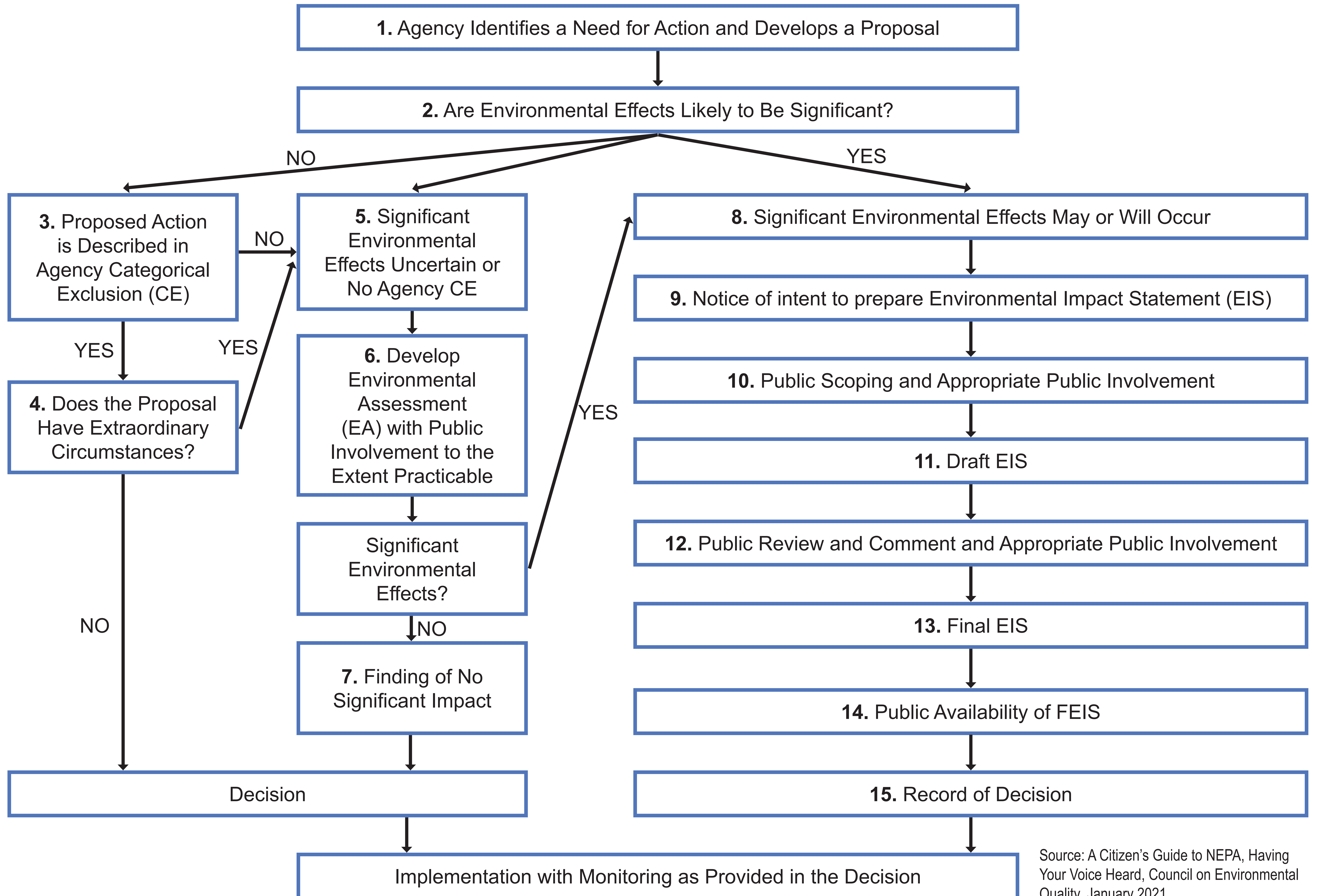
# INTRODUCTION TO U.S. DEPARTMENT OF ENERGY (DOE) LOAN PROGRAMS OFFICE (LPO)



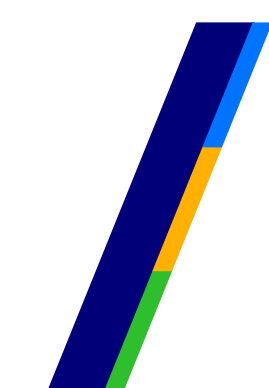
<https://www.energy.gov/lpo/loan-programs-office>



# THE NEPA PROCESS



Source: A Citizen's Guide to NEPA, Having Your Voice Heard, Council on Environmental Quality, January 2021.



# PROJECT DESCRIPTION

Phase 1 of the Grain Belt Express Transmission Project includes **578 miles** of primarily high voltage direct current (HVDC) transmission line and associated facilities extending from Ford County, Kansas, to Callaway County, Missouri.

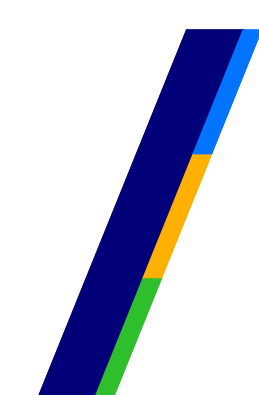
In 2013, the Kansas Corporation Commission approved the route through Kansas. In 2019, Missouri Public Service Commission (MPSC) approved the route through Missouri. In 2023, the MPSC approved the addition of the Tiger Connector to connect into Missouri's electric grid.

In 2021, the Project applied for a loan guarantee from DOE LPO, which is the subject of the Draft EIS.

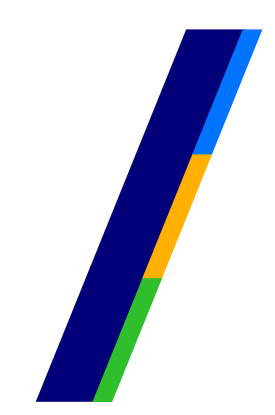
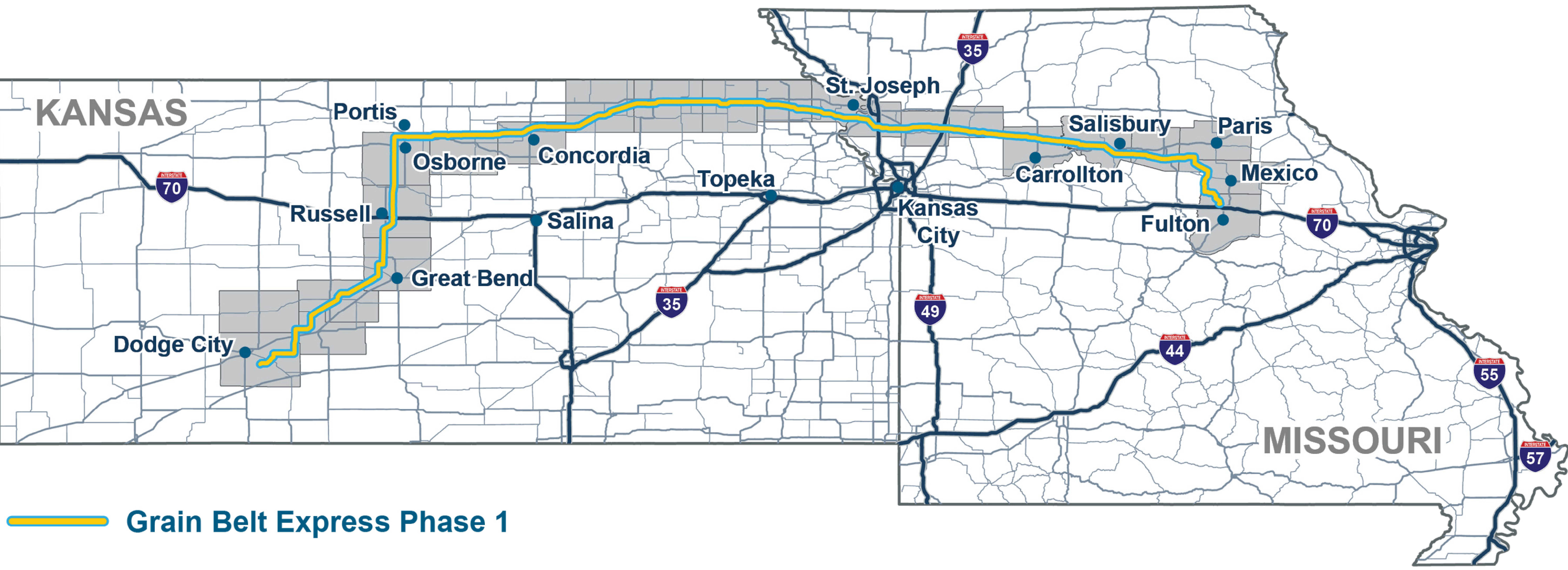
Each milestone requires coordination with property owners, elected officials, various stakeholders and agencies, and the general public.



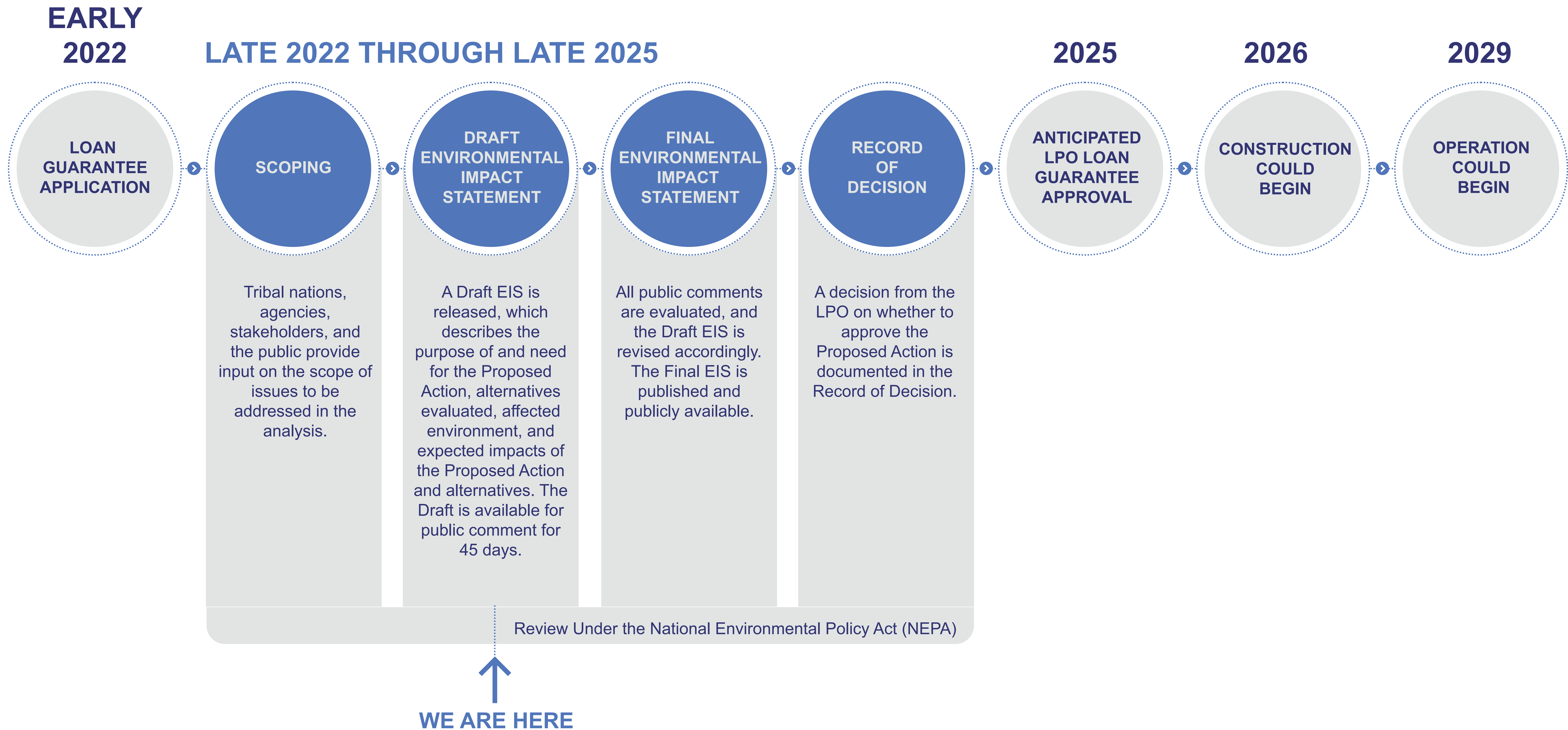
HVDC Transmission  
Line Rendering



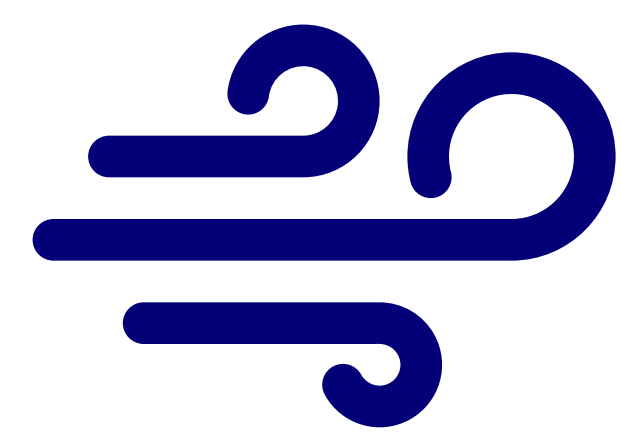
# PHASE 1 GRAIN BELT EXPRESS TRANSMISSION LINE PROJECT ROUTE



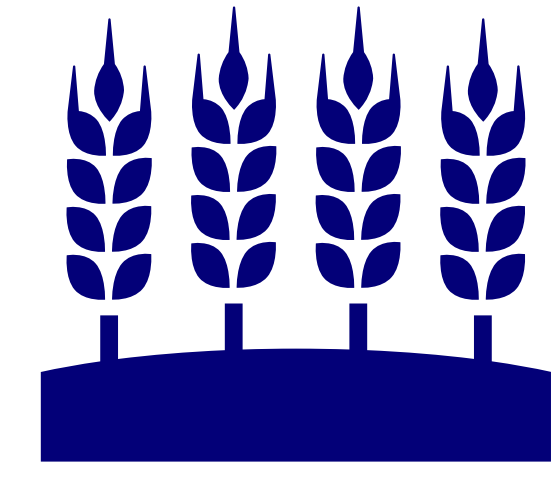
# GRAIN BELT EXPRESS EIS PROCESS



# RESOURCES EVALUATED IN THE DRAFT EIS



Air Quality



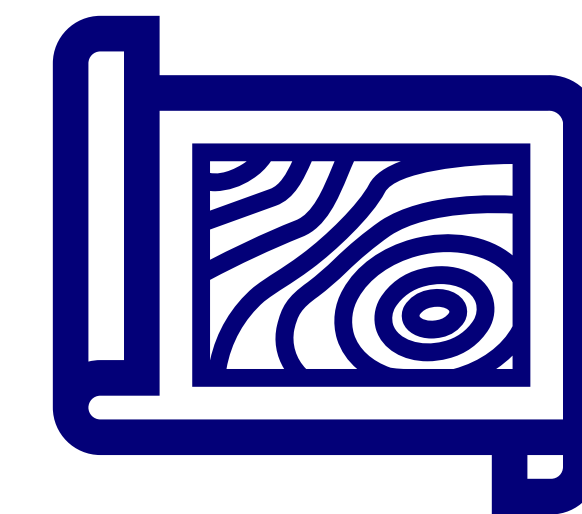
Cultural Resources



Land Use



Noise



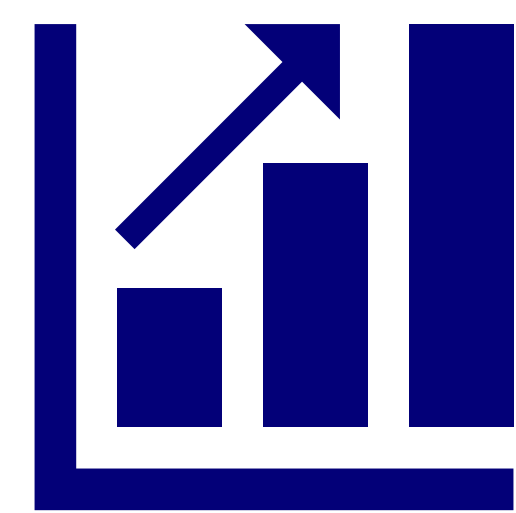
Paleontology and Soils



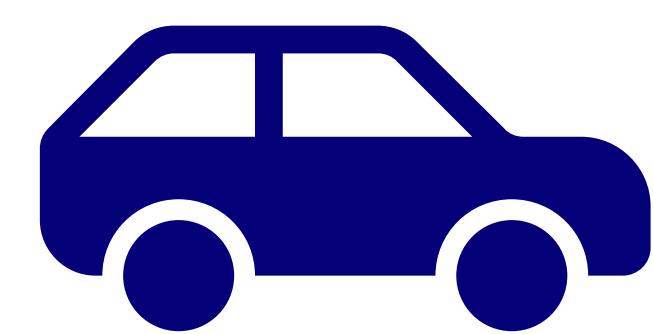
Public Health and Safety



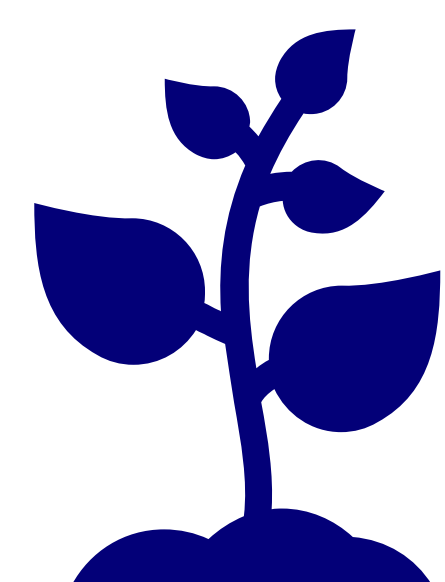
Recreation



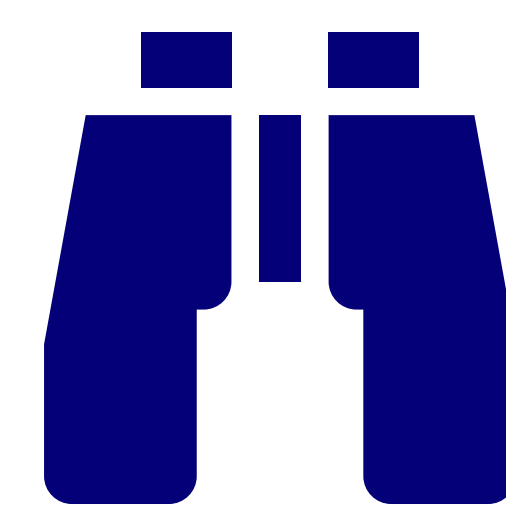
Socioeconomics



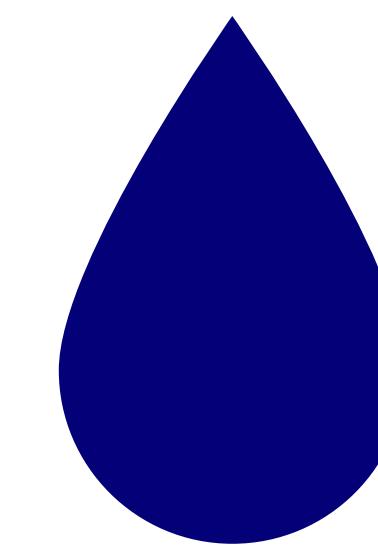
Transportation



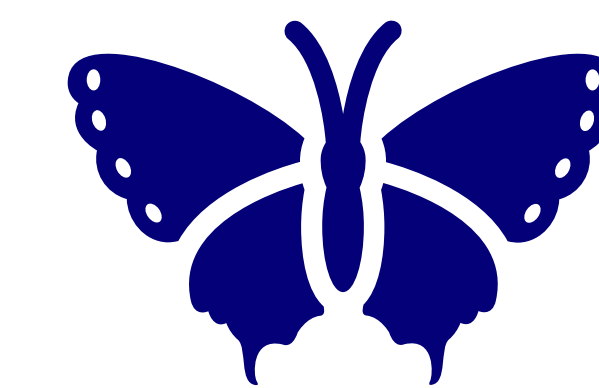
Vegetation



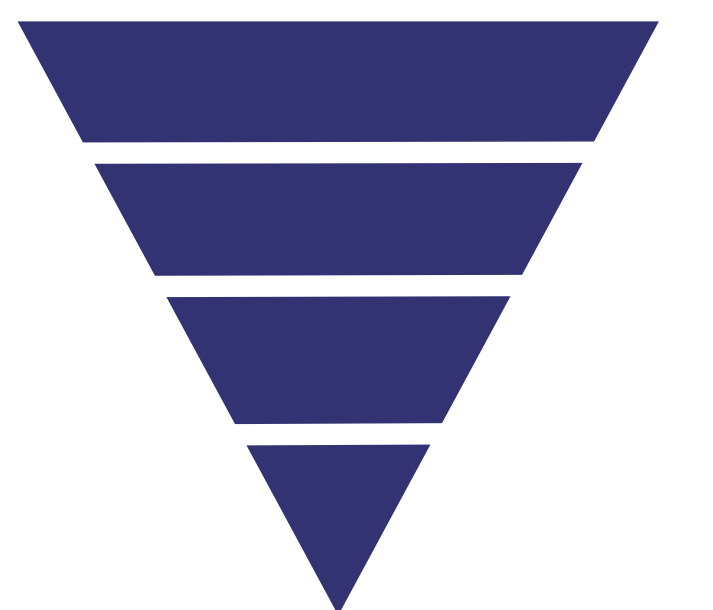
Visual Resources



Water Resources

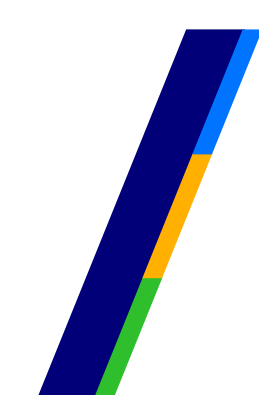


Wildlife



Cumulative Impacts

Scan here to review potential impacts to these resources in the Draft EIS

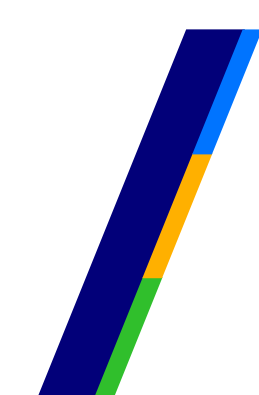


# ENVIRONMENTAL PROTECTION MEASURES (EPMS)

Grain Belt Express LLC has developed and committed to 101 EPMS as part of the Project design, construction, operations and maintenance, and decommissioning to further avoid or minimize effects to environmental resources. Examples include\*:

- Designing the temporary and permanent components of the Project to avoid impacts to wetlands, waterbodies, floodplains, cultural resources, sensitive Tribal areas, and sensitive wildlife habitat to the greatest extent possible.
- Avoiding sensitive resources or using specialized equipment during construction, including timing restrictions for certain wildlife resources.
- Developing plans to address inadvertent discovery of archaeological or paleontological resources during construction.
- Implementing measures during construction to control dust, minimize erosion, and minimize the spread of weeds.
- Contracting with compliance monitors to ensure adherence to environmental commitments during construction.

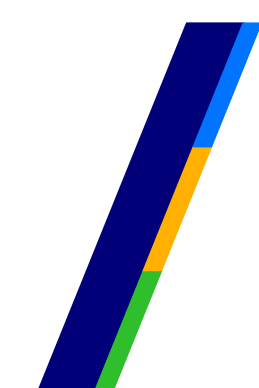
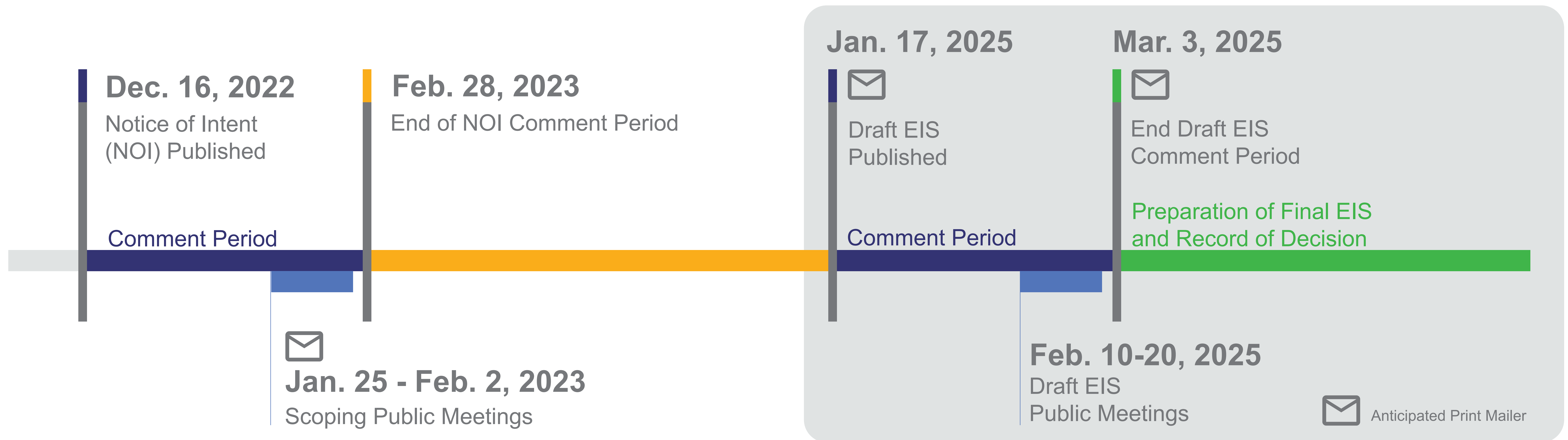
\*The full list of EPMS is included in Appendix 2.4 of the Draft EIS.





# PUBLIC OUTREACH PROCESS

**We Want to Hear from You!** Meaningful public outreach is a vital part of the NEPA process; this involves sharing honest, transparent information with you while giving you the opportunity to be heard, listening to your comments, and answering your questions. As information received during scoping was reviewed and considered for inclusion in the Draft EIS, information received in during the Draft EIS meetings will be evaluated and considered for inclusion in the Final EIS.



# WE WANT TO HEAR FROM YOU

Comments for the Draft EIS will be accepted through March 3, 2025.



## Website – Option 1



Visit  
<https://www.energy.gov/lpo/eis-0554-grain-belt-express-transmission-line>  
to submit your comments.



## Mail

U.S. Department of Energy,  
Loan Programs Office, LP 30  
Grain Belt Express EIS  
c/o: T. Stribley, NEPA Compliance Officer  
1000 Independence Avenue SW  
Washington, DC 20585



## Website – Option 2

Visit [Regulations.gov](https://www.regulations.gov)  
and search for Docket No.  
**DOE-HQ-2023-0020**



## E-mail

[LPO\\_GrainBelt\\_EIS@hq.doe.gov](mailto:LPO_GrainBelt_EIS@hq.doe.gov)