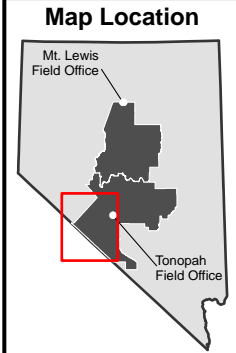
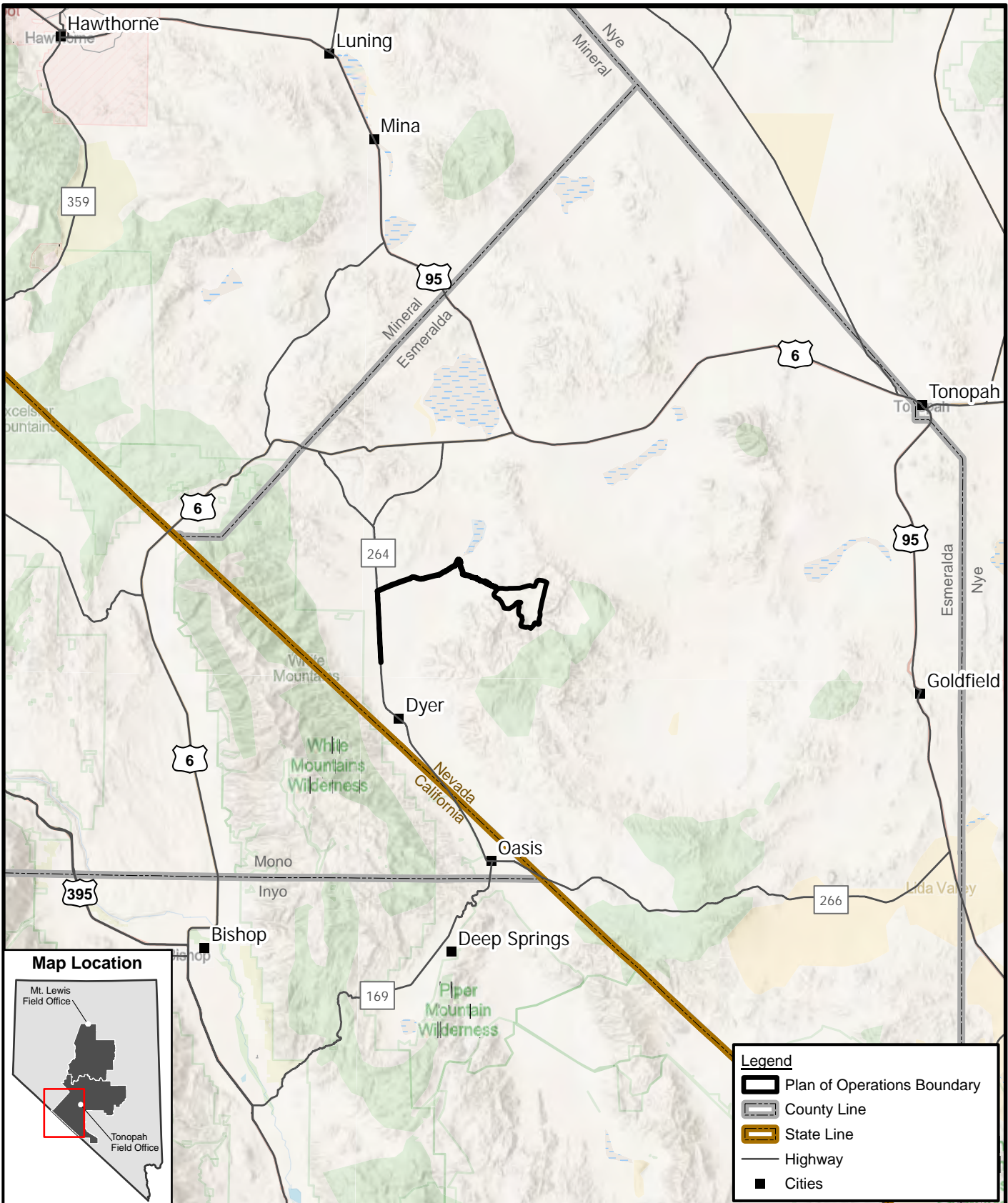


Appendix B: Figures



Legend

- Plan of Operations Boundary
- County Line
- State Line
- Highway
- Cities

Battle Mountain
BLM District
Tonopah Field Office

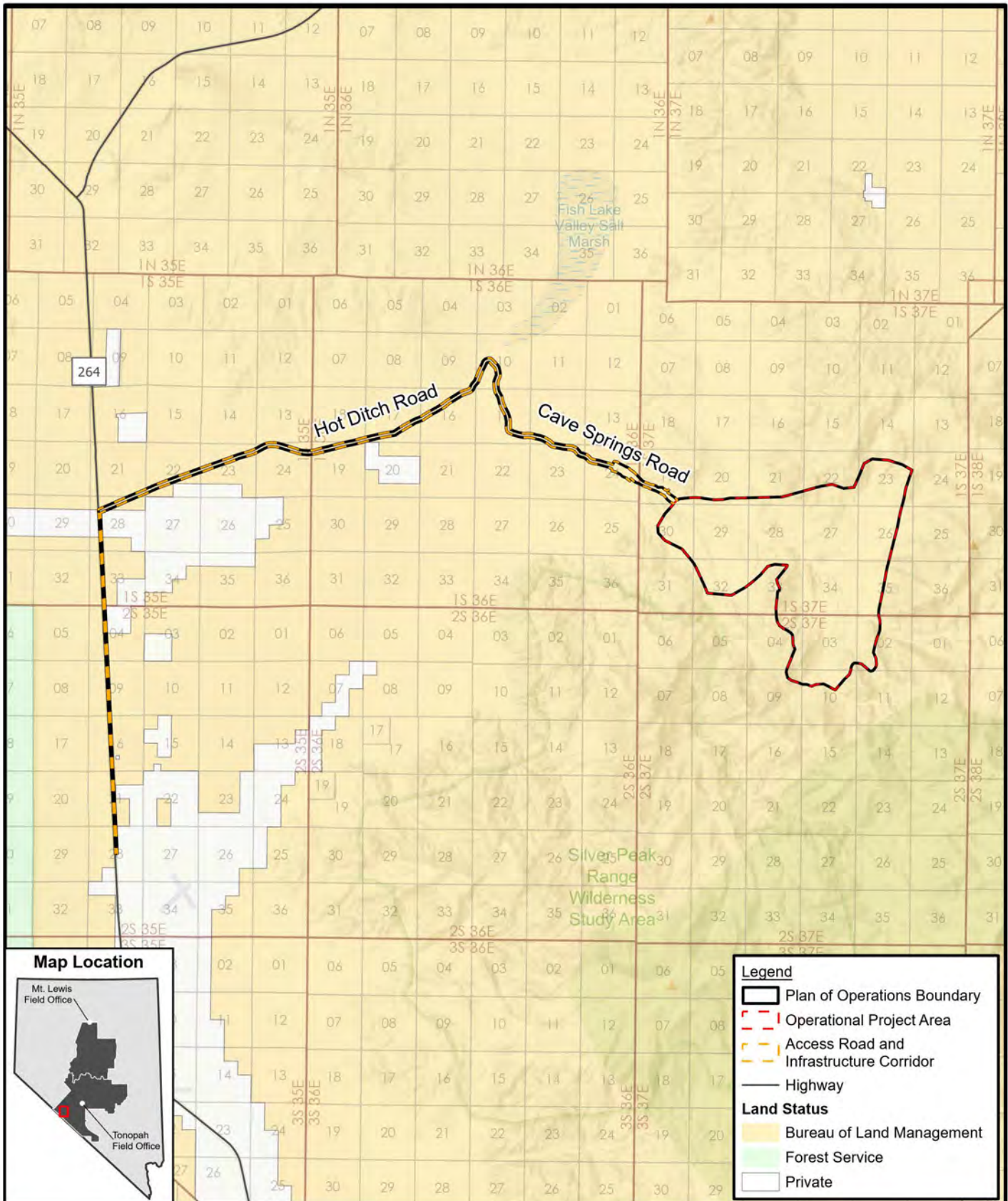
**IONEER RHYOLITE RIDGE LLC
RHYOLITE RIDGE LITHIUM-BORON
PROJECT**

PROJECT LOCATION

FIGURE 1-1

2024-06-14

No warranty is made by the Bureau of Land Management as to the accuracy, reliability, or completeness of these data for individual use or aggregate use with other data.



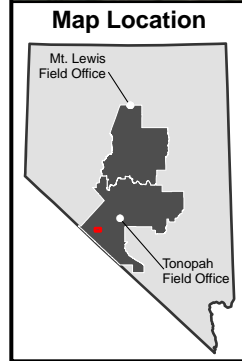
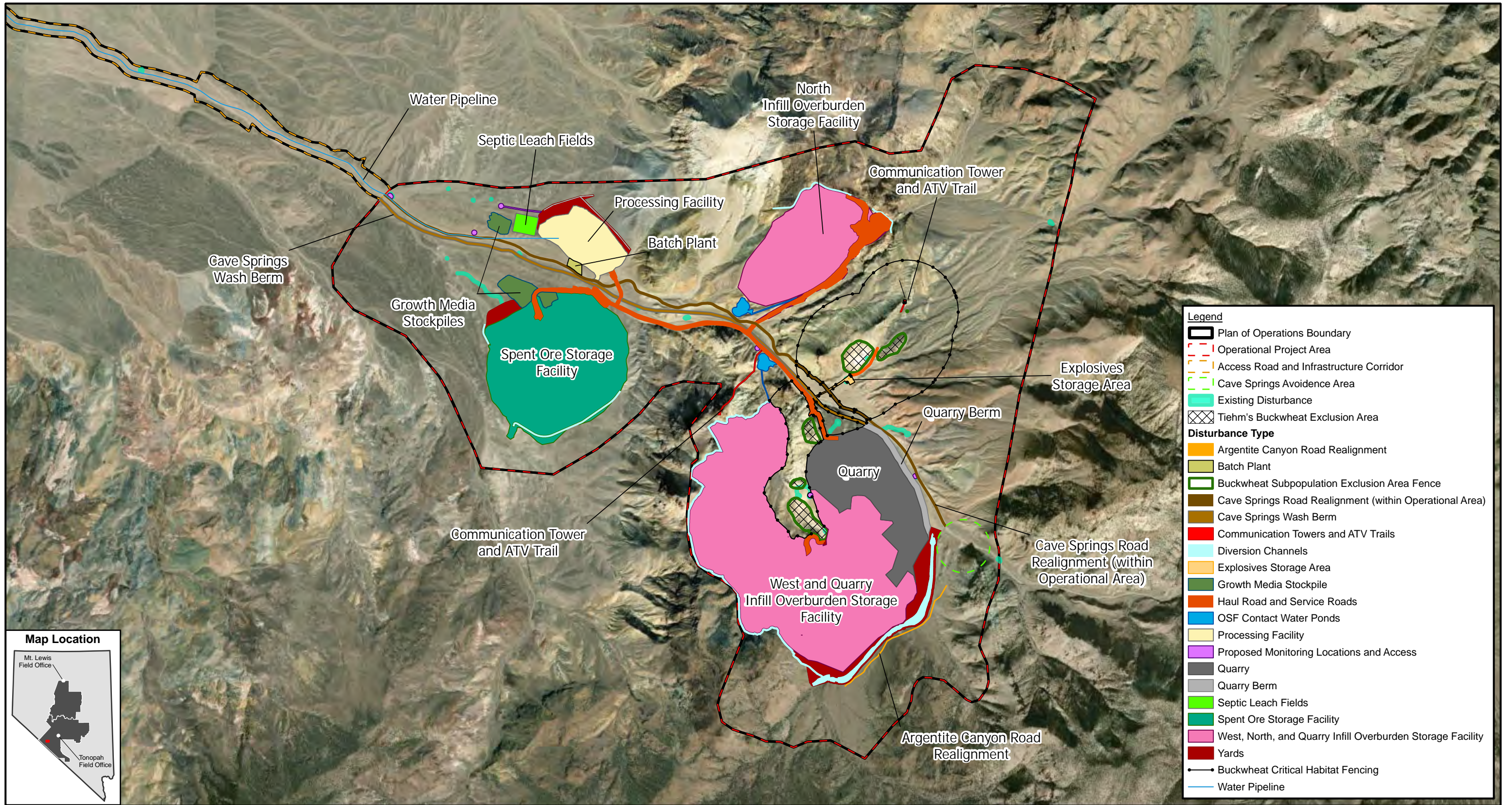
**IONEER RHYOLITE RIDGE LLC
RHYOLITE RIDGE LITHIUM-BORON
PROJECT**

0 2.5 5 Miles N
1 in = 2.5 miles

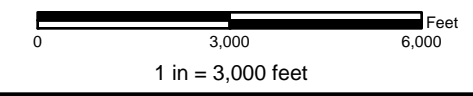
PLAN OF OPERATIONS BOUNDARY

FIGURE 2-1
2024-08-14

No warranty is made by the Bureau of Land Management as to the accuracy, reliability, or completeness of these data for individual use or aggregate use with other data.



**IONEER RHYOLITE RIDGE LLC
RHYOLITE RIDGE LITHIUM-BORON
PROJECT**



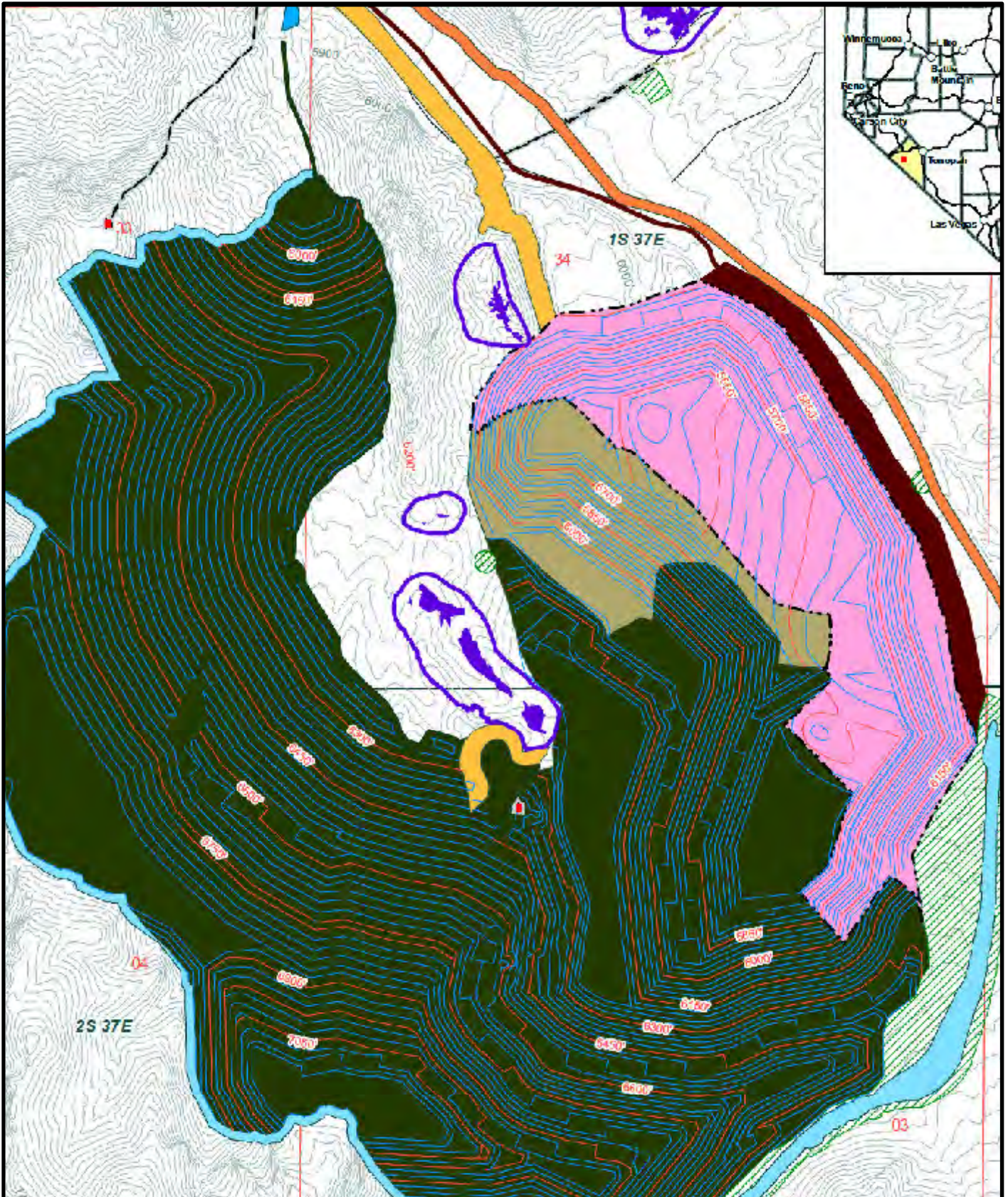
PROPOSED ACTION PROJECT FACILITIES

FIGURE 2-2

2024-06-14

 Battle Mountain
BLM District
Tonopah Field Office

No warranty is made by the Bureau of Land Management as to the accuracy, reliability, or completeness of these data for individual use or aggregate use with other data.



Battle Mountain
BLM District
Tonopah Field Office

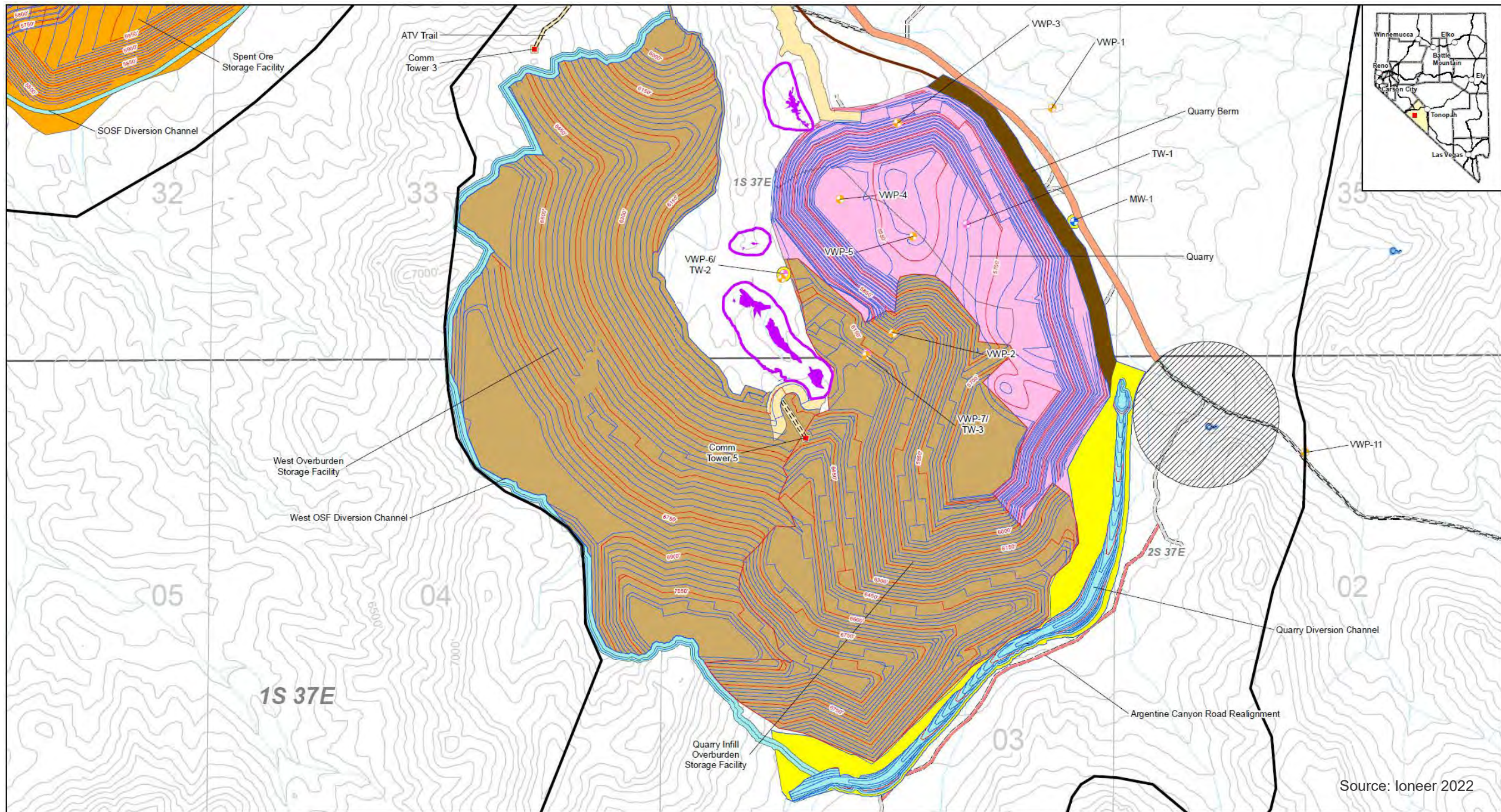
**IONEER RHYOLITE RIDGE LLC
RHYOLITE RIDGE LITHIUM-BORON
PROJECT**

PROPOSED ACTION QUARRY



FIGURE 2-3

2024-06-14



Source: Ioneer 2022

Explanation

- | | | | | | |
|-----------------------------|---------------------------|-----------------------------------|-----------------------------|-------------------------|-----------------|
| Plan of Operations Boundary | Existing Monitoring Well | Existing Road | Mine Features | Yard | Contours |
| Avoidance Area | Vibrating Wire Piezometer | Argentine Canyon Road Realignment | Quarry | County Road (Realigned) | Existing |
| Buckwheat Populations | Test Well | ATV Trails | Overburden Storage Facility | Mine Road | Proposed Major |
| Buckwheat Exclusion Area | Spring/Seep | Drainage | Spent Ore Storage Facility | Berm | Proposed Minor |
| | | | Diversion Channel | Communication Towers | |



**IONEER RHYOLITE RIDGE LLC
RHYOLITE RIDGE LITHIUM-BORON
PROJECT**



**PROPOSED ACTION WEST
OVERBURDEN STORAGE FACILITY**

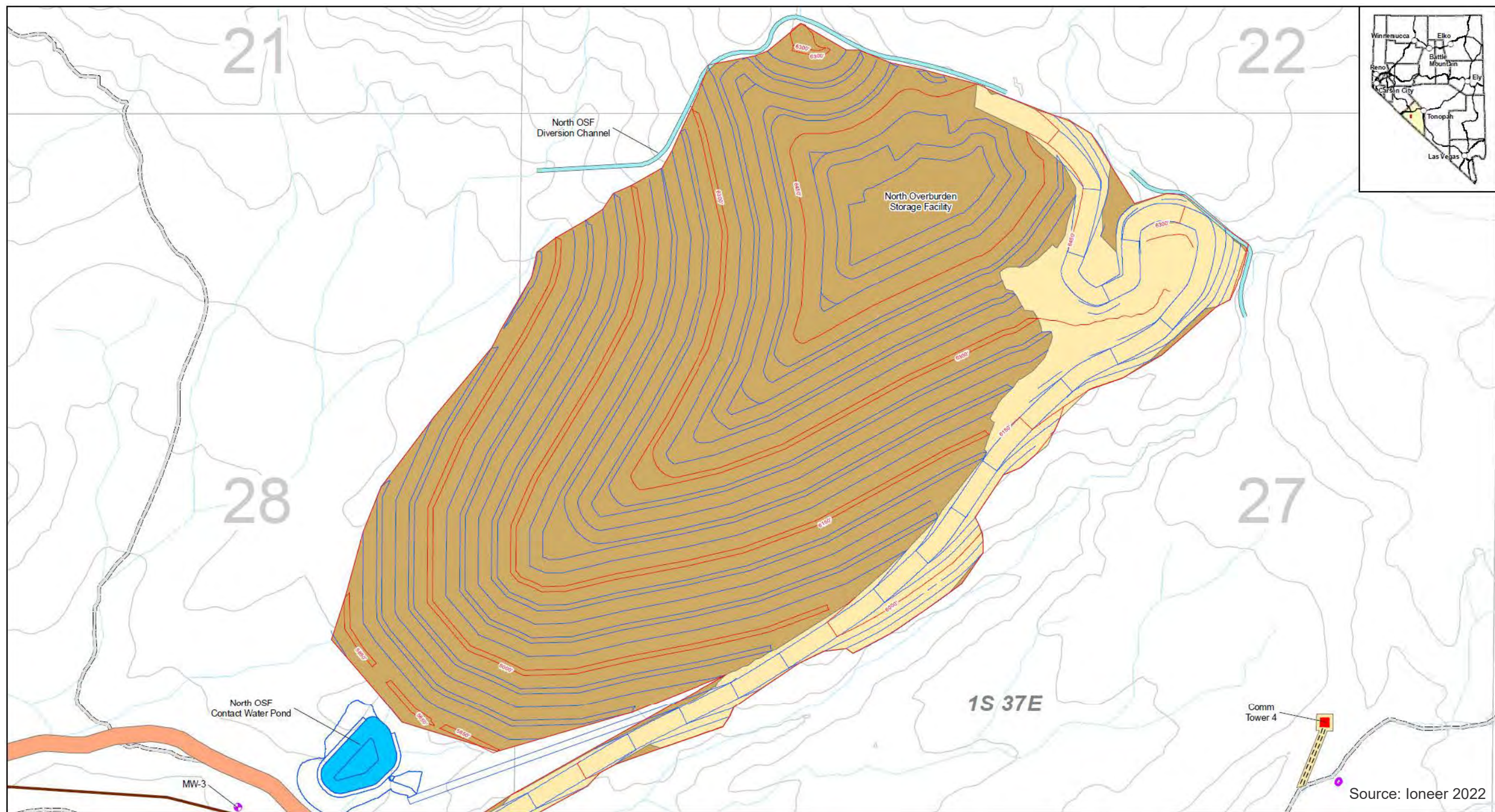
FIGURE 2-4

2022-12-21



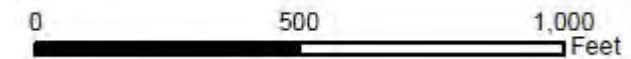
Battle Mountain
BLM District
Tonopah Field Office

No warranty is made by the Bureau of Land Management as to the accuracy, reliability, or completeness of these data for individual use or aggregate use with other data.



Explanation

- | | | | | |
|--|--|---|---|---|
| <ul style="list-style-type: none"> Plan of Operations Boundary Buckwheat Populations Buckwheat Exclusion Area | <ul style="list-style-type: none"> ● Proposed Monitoring Well — Existing Road == ATV Trails - - - Drainage | <p>Mine Features</p> <ul style="list-style-type: none"> Overburden Storage Facility Pond Diversion Channel | <ul style="list-style-type: none"> County Road (Realigned) Mine Road Communication Towers | <p>Contours</p> <ul style="list-style-type: none"> — Existing - - - Proposed Major — Proposed Minor |
|--|--|---|---|---|



Battle Mountain
BLM District
Tonopah Field Office

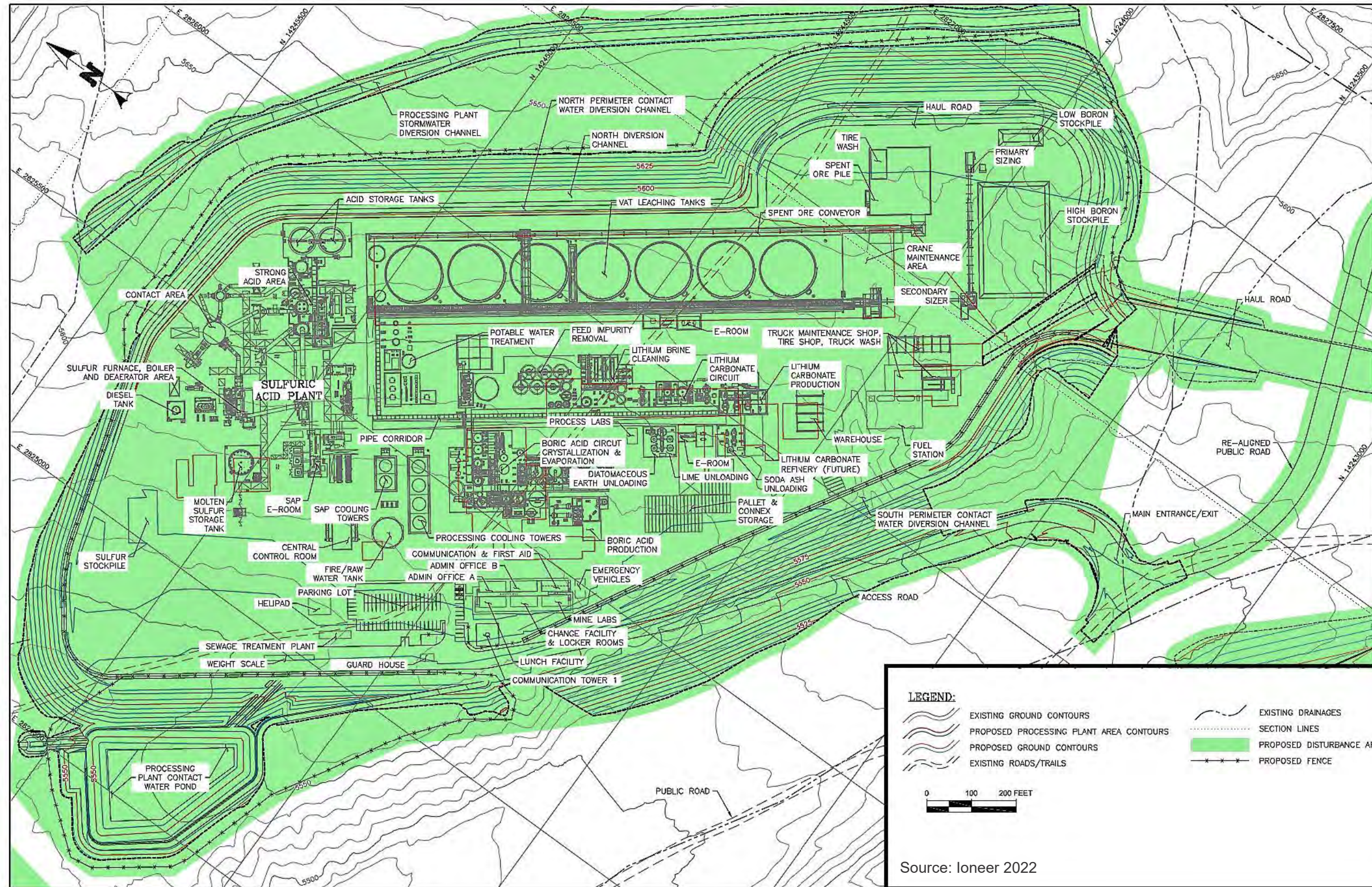
**IONEER RHYOLITE RIDGE LLC
RHYOLITE RIDGE LITHIUM-BORON
PROJECT**



**PROPOSED ACTION NORTH
OVERBURDEN STORAGE FACILITY**

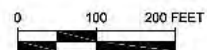
FIGURE 2-5

2022-12-21



LEGEND:

	EXISTING GROUND CONTOURS		EXISTING DRAINAGES
	PROPOSED PROCESSING PLANT AREA CONTOURS		SECTION LINES
	PROPOSED GROUND CONTOURS		PROPOSED DISTURBANCE AREA
	EXISTING ROADS/TRAILS		PROPOSED FENCE



Source: Ioneer 2022



Battle Mountain
BLM District
Tonopah Field Office

**IONEER RHYOLITE RIDGE LLC
RHYOLITE RIDGE LITHIUM-BORON
PROJECT**



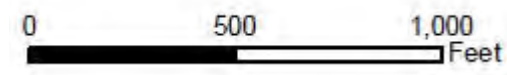
PROCESSING FACILITY

FIGURE 2-6

2022-12-21



- | | | | | | |
|-------------------------------|-----------------------------|----------------------|-------------------------------|------------------|------------------|
| Explanation | | Mine Features | | Contours | |
| — Plan of Operations Boundary | — Control Gate | — Existing Road | — Batch Plant | — Existing | — Proposed Major |
| — Proposed Monitoring Well | — Vibrating Wire Piezometer | — ATV Trails | — Overburden Storage Facility | — Proposed Minor | |
| — Spring/Seep | | — Drainage | — Spent Ore Storage Facility | | |
| | | | — Processing Facility | | |
| | | | — Diversion Channel | | |
| | | | — Pond | | |
| | | | — Future Pond | | |
| | | | — Growth Media Stockpile | | |
| | | | — Yard | | |
| | | | — County Road (Realigned) | | |
| | | | — Mine Road | | |
| | | | — Communication Towers | | |



**IONEER RHYOLITE RIDGE LLC
RHYOLITE RIDGE LITHIUM-BORON
PROJECT**



Battle Mountain
BLM District
Tonopah Field Office

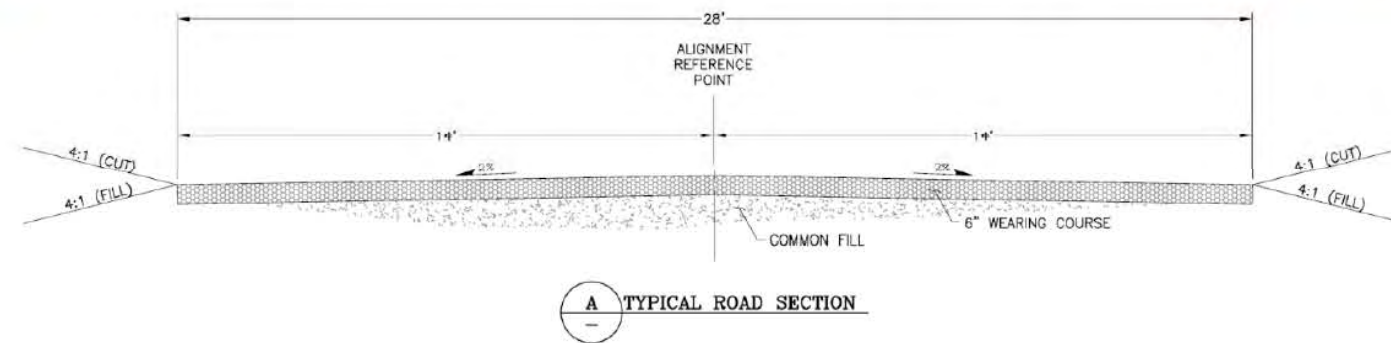
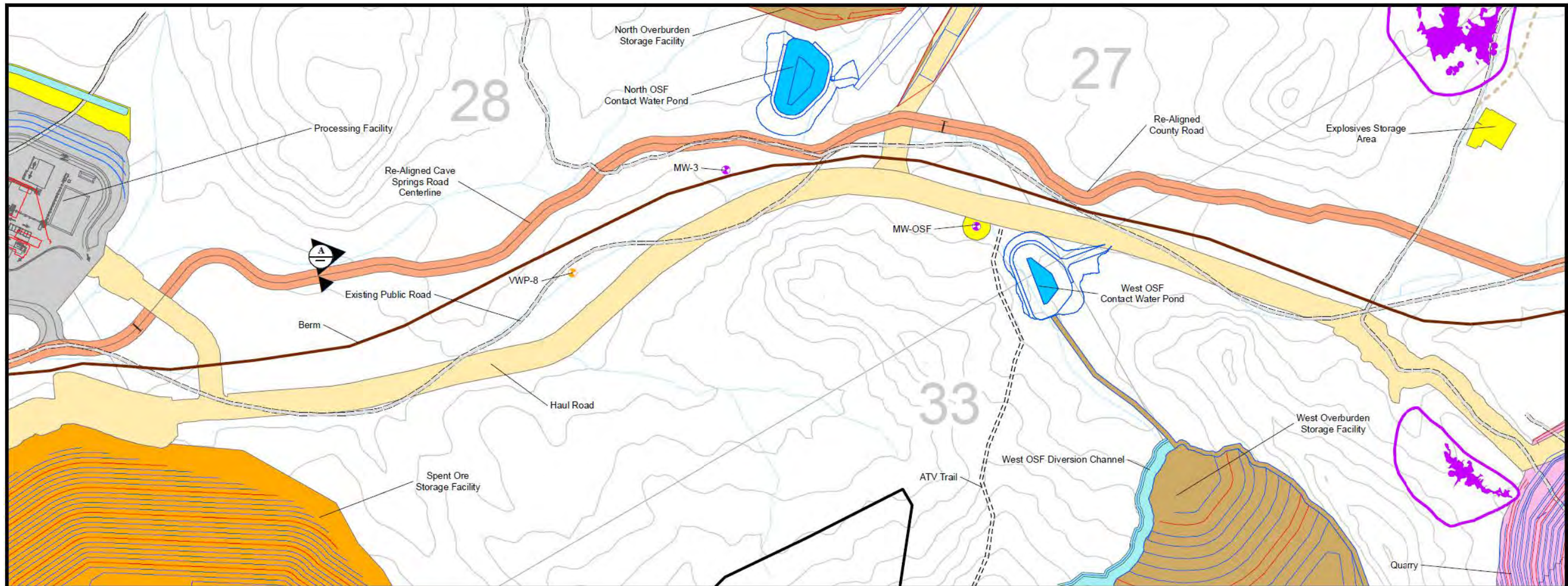


SPENT ORE STORAGE FACILITY

FIGURE 2-7

2022-12-21

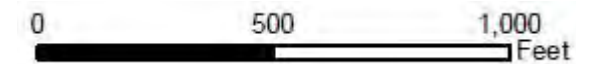
No warranty is made by the Bureau of Land Management as to the accuracy, reliability, or completeness of these data for individual use or aggregate use with other data.



Source: Ioneer 2022

Explanation

- | | | | | | |
|-----------------------------|---------------------------|---------------------------------------|-----------------------------|-------------------------|-----------------|
| Plan of Operations Boundary | Control Gate | Existing Road | Mine Features | Diversion Channel | Contours |
| Buckwheat Populations | Proposed Monitoring Well | Buckwheat Exclusion Area Road Reroute | Quarry | Pond | Existing |
| Buckwheat Exclusion Area | Vibrating Wire Piezometer | ATV Trails | Overburden Storage Facility | Yard | Proposed Major |
| | Drainage | | Spent Ore Storage Facility | County Road (Realigned) | Proposed Minor |
| | | | Processing Facility | Mine Road | |



**IONEER RHYOITE RIDGE LLC
RHYOLITE RIDGE LITHIUM-BORON
PROJECT**

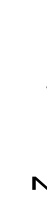
**PROPOSED ACTION CAVE SPRINGS
ROAD REALIGNMENT**

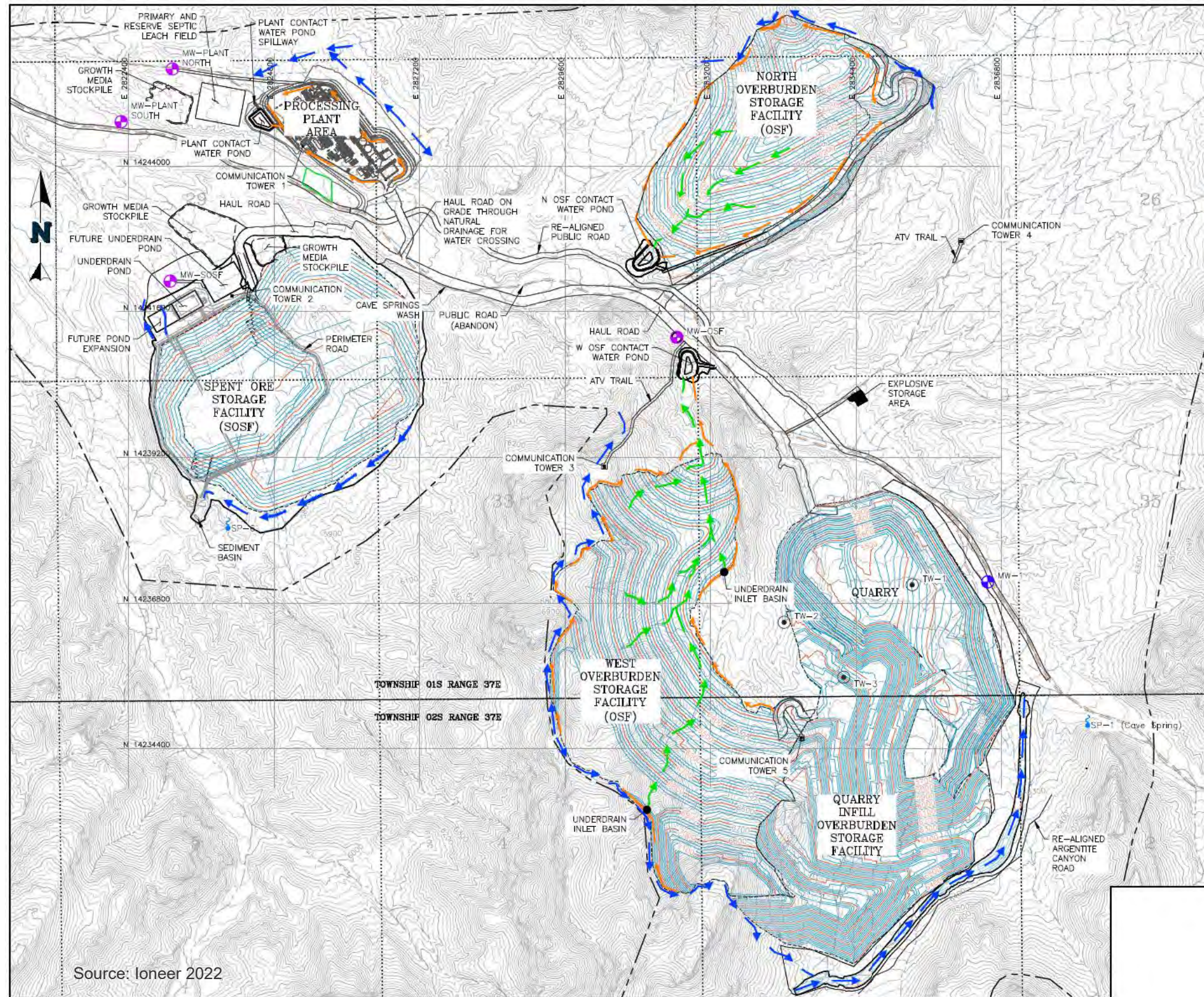
FIGURE 2-8

2022-12-21



Battle Mountain
BLM District
Tonopah Field Office





LEGEND:

- EXISTING GROUND CONTOURS
- PROPOSED GROUND CONTOURS
- EXISTING ROADS/TRAILS
- EXISTING DRAINAGES
- OPERATIONAL PROJECT AREA
- SECTION LINES
- SECTION NUMBER
- EXISTING NATURAL SPRING/SEEP
- PROPOSED STORMWATER DIVERSION CHANNEL
- PROPOSED CONTACT WATER CHANNEL
- PROPOSED UNDERDRAIN CHANNEL
- PROPOSED FENCE
- EXISTING GROUNDWATER MONITORING WELL
- PROPOSED GROUNDWATER MONITORING WELL
- EXISTING DEWATERING WELLS

0 800 1600 FEET

NOTES:

- OSF BENCHES WILL DIRECT RUNOFF TOWARD THE PERIMETER CONTACT WATER DIVERSION CHANNELS AT A SLOPE OF 1 PERCENT.

Source: Ioneer 2022



Battle Mountain
BLM District
Tonopah Field Office

**IONEER RHYOLITE RIDGE LLC
RHYOLITE RIDGE LITHIUM-BORON
PROJECT**

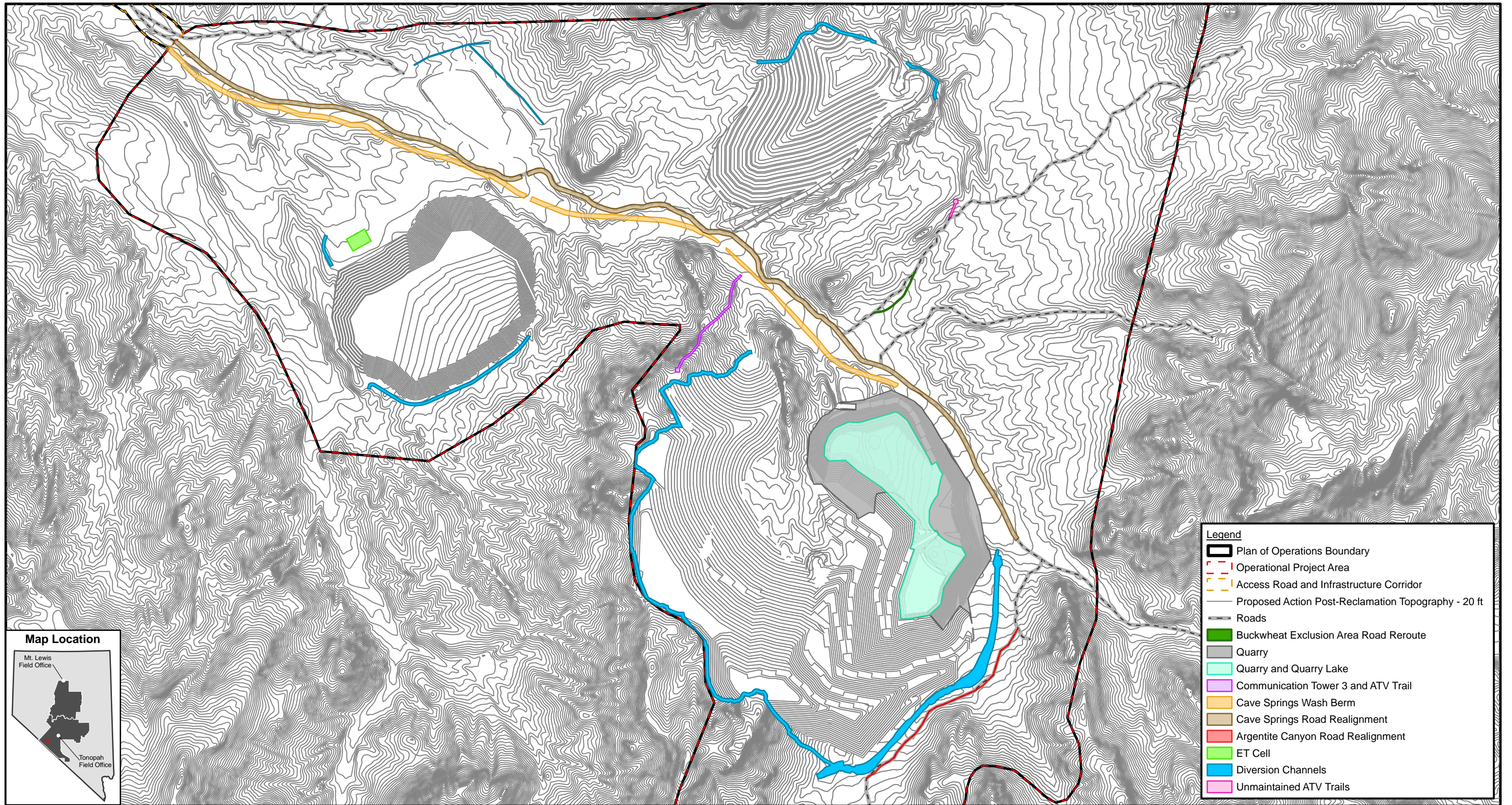


**PROPOSED ACTION STORMWATER
MANAGEMENT LAYOUT**

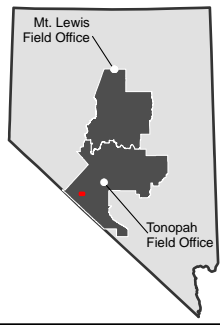
FIGURE 2-9

2022-12-21

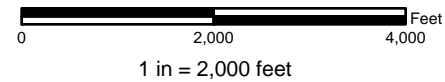
No warranty is made by the Bureau of Land Management as to the accuracy, reliability, or completeness of these data for individual use or aggregate use with other data.



Map Location



**IONEER RHYOLITE RIDGE LLC
RHYOLITE RIDGE LITHIUM-BORON
PROJECT**



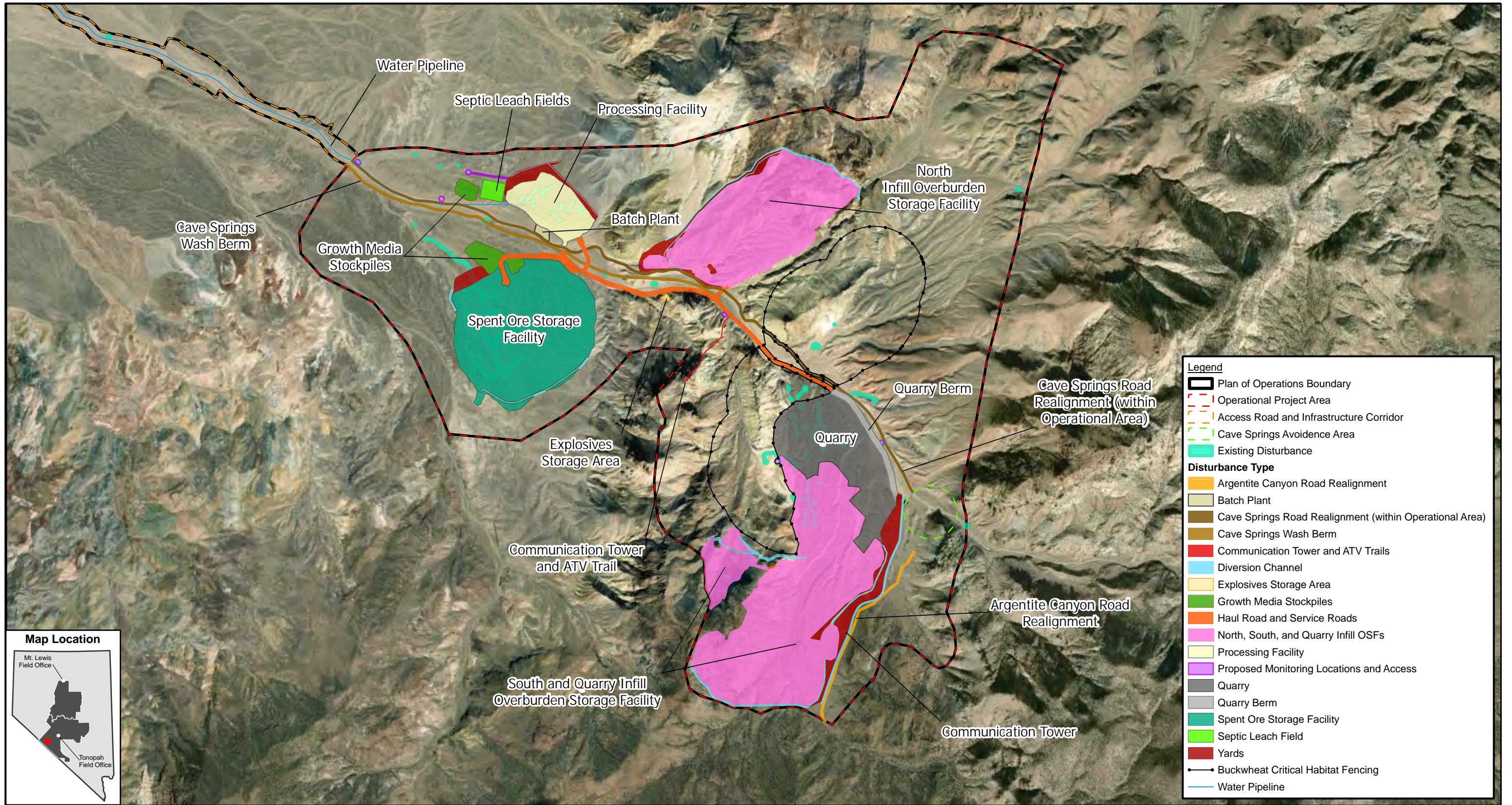
**PROPOSED ACTION POST-RECLAMATION
TOPOGRAPHY**

FIGURE 2-10

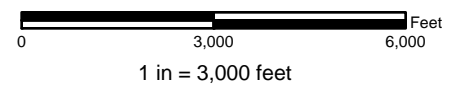
2024-08-13



Battle Mountain
BLM District
Tonopah Field Office



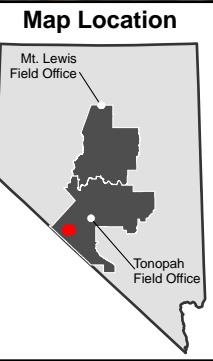
**IONEER RHYOLITE RIDGE LLC
RHYOLITE RIDGE LITHIUM-BORON
PROJECT**



**NORTH AND SOUTH OVERBURDEN
STORAGE FACILITY OPTION
PROPOSED FACILITIES**

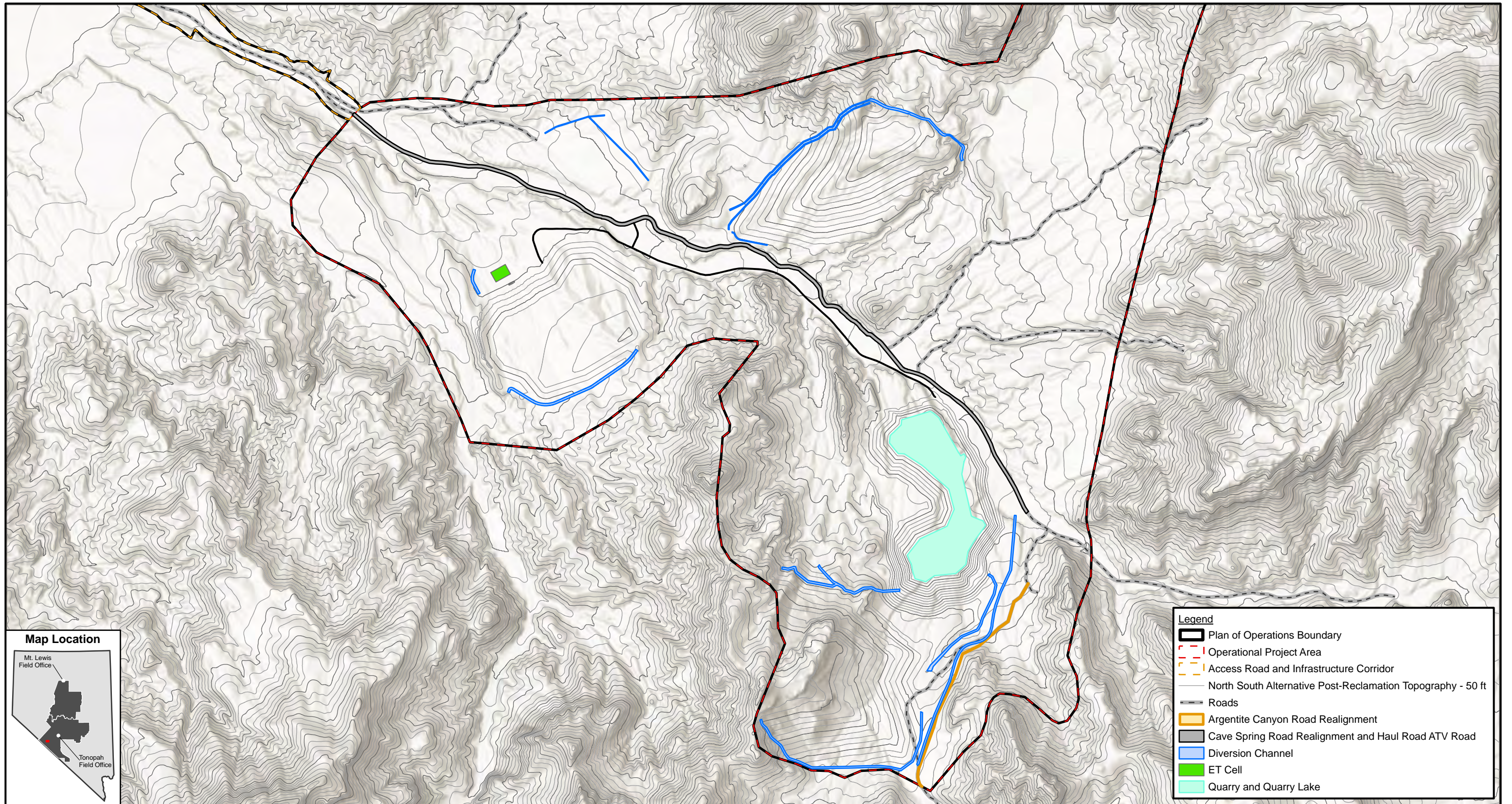
FIGURE 2-11

2024-08-13

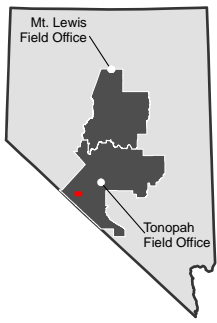


**Battle Mountain
BLM District
Tonopah Field Office**

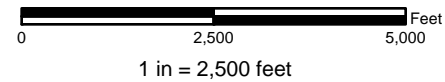
No warranty is made by the Bureau of Land Management as to the accuracy, reliability, or completeness of these data for individual use or aggregate use with other data.



Map Location



**IONEER RHYOLITE RIDGE LLC
RHYOLITE RIDGE LITHIUM-BORON
PROJECT**



**NORTH SOUTH ALTERNATIVE
POST-RECLAMATION TOPOGRAPHY**

FIGURE 2-12

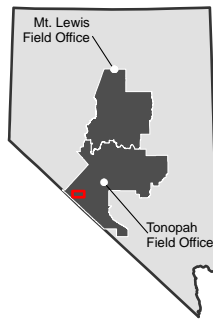
2024-08-13



Battle Mountain
BLM District
Tonopah Field Office



Map Location



Legend

- Plan of Operations Boundary
- Operational Project Area
- Access Road and Infrastructure Corridor
- Existing Disturbance

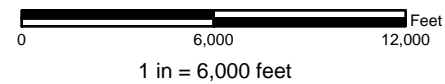
Land Status

- Bureau of Land Management
- Forest Service
- Private



Battle Mountain
BLM District
Tonopah Field Office

**IONEER RHYOLITE RIDGE LLC
RHYOLITE RIDGE LITHIUM-BORON
PROJECT**



NO ACTION ALTERNATIVE

FIGURE 2-13

2024-06-14