



THE TULE RIVER TRIBE

DOE Project Review 2024

**Rhonda Killian
TREDC Project Manager**

Tule River Indian Tribe of California



The Tule River Indian Tribe of the Tule River Reservation is a federally recognized tribe of Native Americans called Yokuts. The Tule River Reservation is located in Tulare County, California.

In the old days, basket weaving was not only a common practice but a necessity of everyday life. Baskets were used for cooking, gathering and storage. "Baskets were the early Tupperware," says Basket Weaver and Tule River Tribal Member Nicola Larsen.

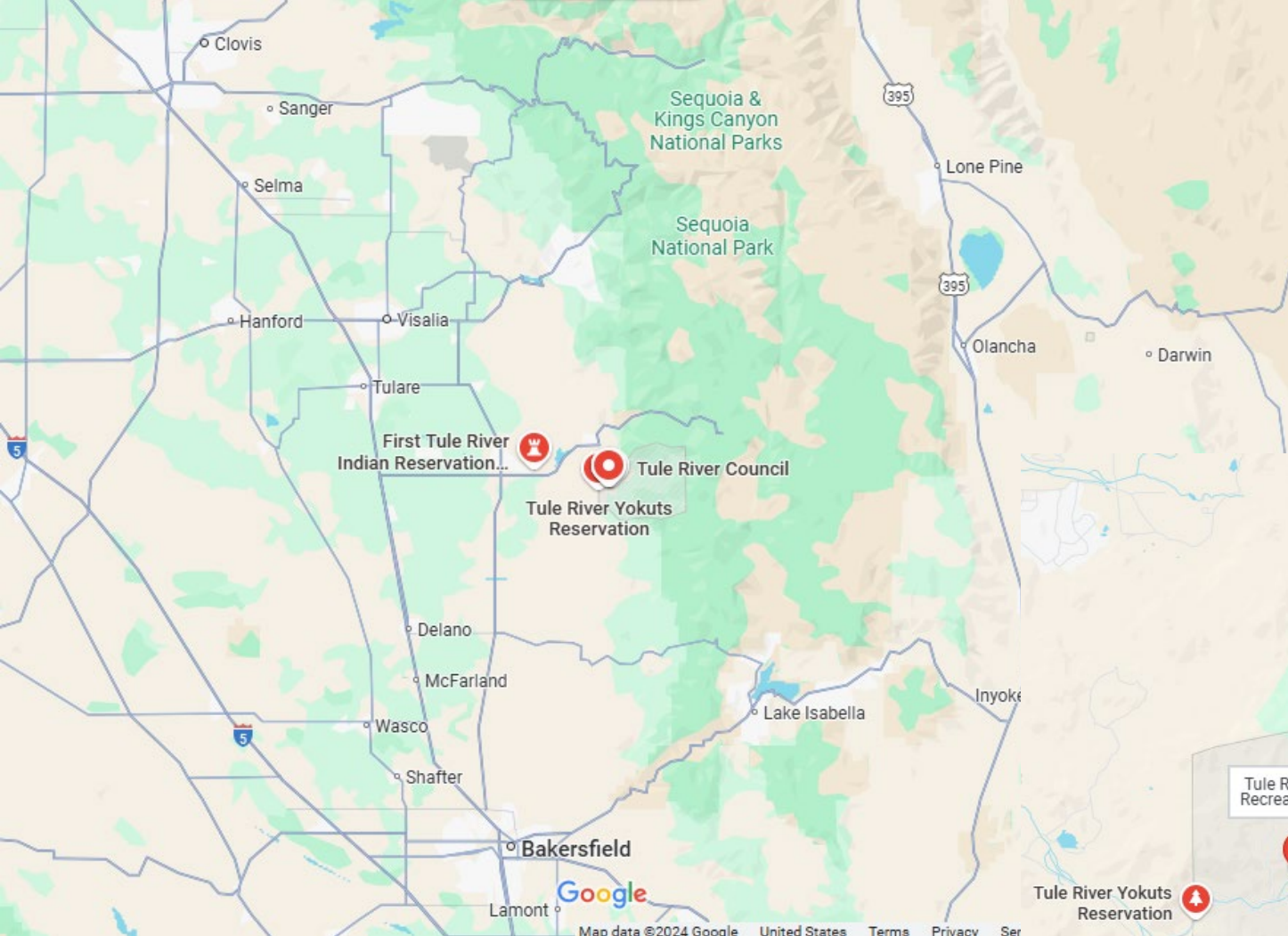






THIS PROJECT WILL PROVIDE 521 KILOWATTS (KW) OF SOLAR PHOTOVOLTAIC (PV) SYSTEMS FOR FOUR TRIBAL COMMERCIAL FACILITIES TO OFFSET 98% OF THE ANNUAL POWER CONSUMED BY THESE BUILDINGS. THE PROJECT WILL SAVE THE TRIBE NEARLY \$6.6 MILLION OVER THE LIFE OF THE SYSTEMS.

THE TULE RIVER MEMBERS TAKE PRIDE IN ENVIRONMENTAL PRESERVATION AND THEIR STEWARDSHIP OF THE NATURAL ENVIRONMENT, ESPECIALLY THEIR OWN GIANT REDWOOD FOREST IN THE UPPER ELEVATION OF THE RESERVATION, AND THE TRT SOLAR SYSTEMS PROJECT REPRESENTS AN ENDEAVOR TO ACHIEVE DEVELOPMENT OF CLEAN AND SUSTAINABLE ENERGY, PROVIDE ECONOMIC SUSTAINABILITY, AND ENHANCE ENVIRONMENTAL STEWARDSHIP EFFORTS.



**~1,857 TRIBAL
ENROLLMENT
1,049 RESIDENTS**



**RESERVATION
84.29 SQ MILES**

* ABOUT US *





TULE RIVER
ECONOMIC DEVELOPMENT CORP.

TREDC is a federally chartered Section 17 corporation of the Tule River Tribe of California.

Its purpose is to generate income to create profits to be used to supplement the revenues of the Tribal government to provide essential governmental services to those within its jurisdiction, including for the health, education and welfare of tribal members, infrastructure and to further economic development.

TREDC currently manages two gas stations/c-stores, a restaurant, two national homeownership programs as well as various grants through both the federal and state agencies that further economic development.

The taxes that we generate for the Tribe are currently set aside for bettering the housing for the Tribal members.

The net income we send to the Tribe goes directly to fund both the Veterans and the Elders programs.

The remaining net income goes to furthering the economic development and growth of TREDC on behalf of the Tribe.



TULE RIVER
ECONOMIC DEVELOPMENT CORP.



TULE RIVER
ECONOMIC DEVELOPMENT CORP.



The Tribe does not take electrical power for granted -
The Reservation connected to the power grid through Southern California Edison in 1968.

Prior to connecting to SCE, only a few tribal members could afford generators for electricity.

Approximately 50% of the Tribal membership suffer from extreme poverty, necessitating the primary goal of Tule River Economic Development Corporation (TREDC) to create economic opportunities.

This project is saving the Tribal Commercial Facilities 98% of the annual expenses of:

TREDC Corporate building – Porterville, CA

Eagle Feather Trading Post #1 – Porterville, CA

Eagle Feather Trading Post #2 – Avenal, CA

Tule River Biomass Facility – Tipton, CA



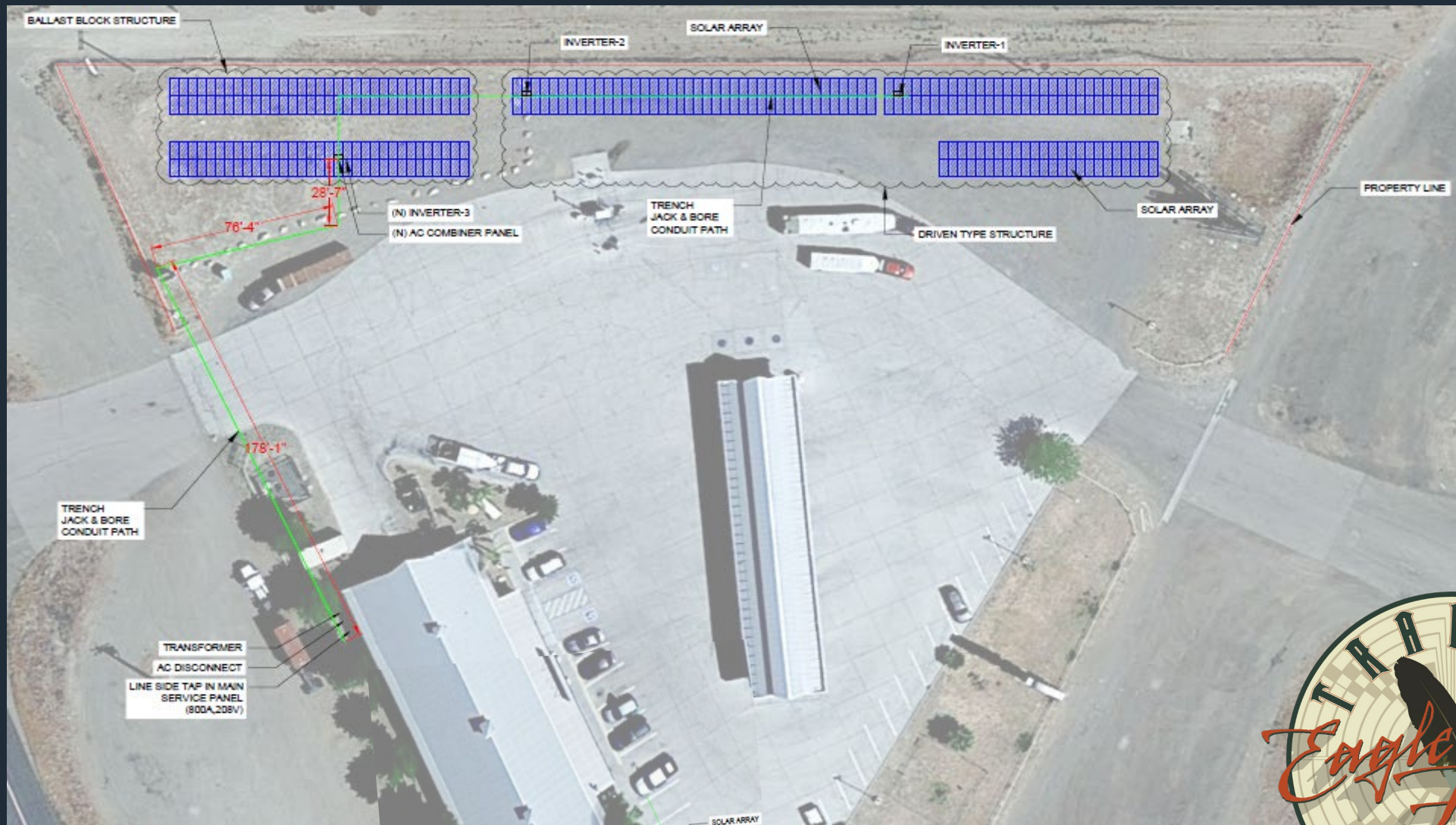
TULE RIVER ECONOMIC DEVELOPMENT CORP.



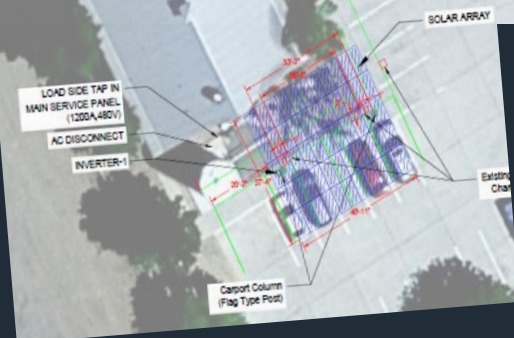
**EFTP1 Ground solar 220 kW –
BESS 372 kWh -2.5 hours**

**Admin Roof solar 34.1 kW –
BESS 185 kWh 3.7 hours**





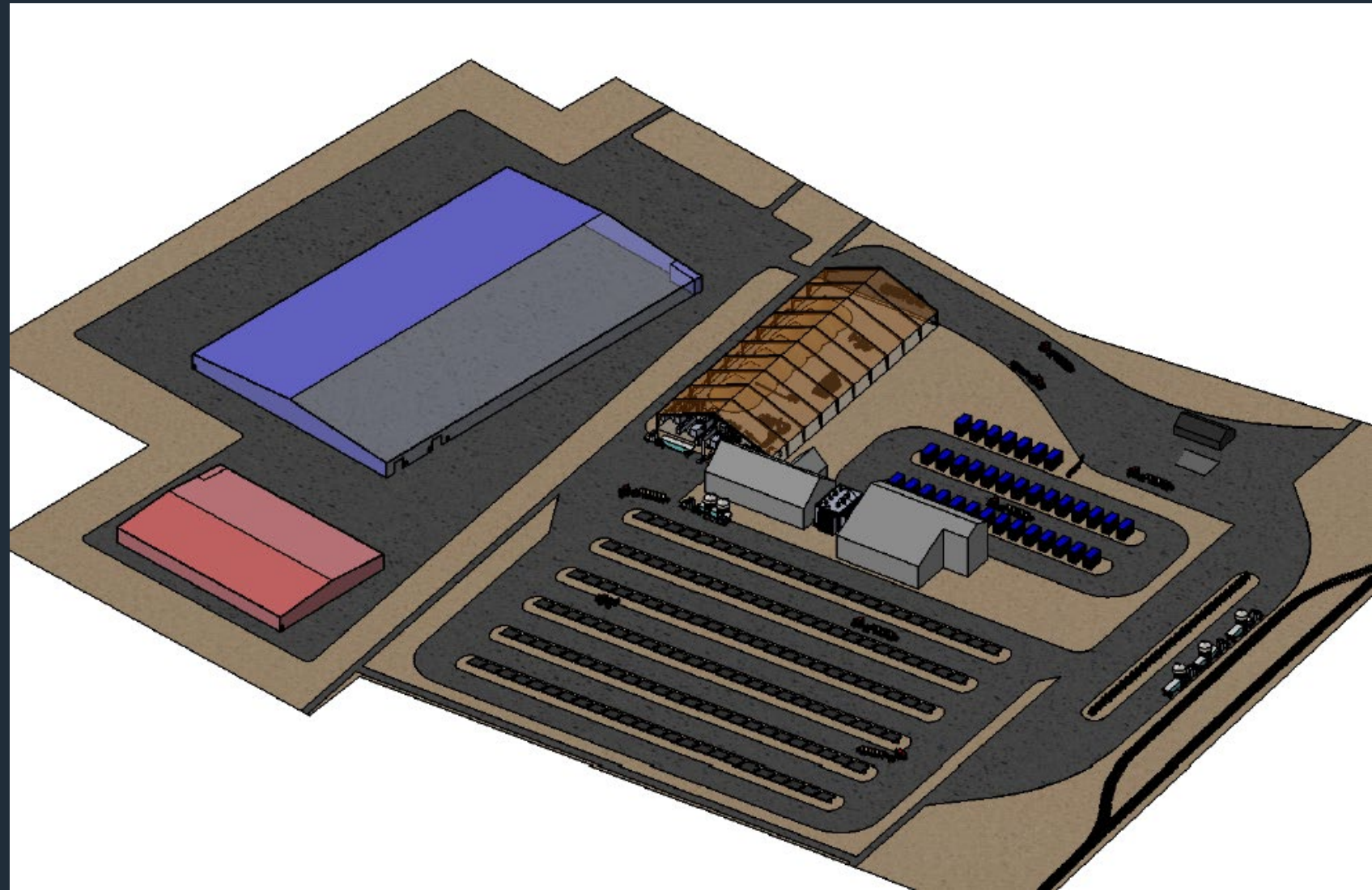
**EFTP2 Ground solar 176 kW –
BESS 372 kWh -2.5 hours**



**EFTP2 EV 29.7 kW –
BESS 180 kWh – 3.6 hours**

TULE RIVER BIOMASS TO BIOCHAR PROJECT

Tipton Roof Solar 89.1 kW – No BESS



* OUR PARTNERS *



GC Green, Inc. (GCG) is a certified Woman, Native American, and Service-Disabled / Wounded Warrior Veteran Owned Business.

Technologies and Solutions Include:
Energy Efficiency, Solar Photovoltaic, Solar Thermal, Fuel Cells, Cogeneration, EV Chargers, Energy Storage, Microgrids

Capabilities:
Design/Build, Procurement, Value Engineering, Energy Modeling, Project Development, Financing Solutions, Permitting, Cost Estimation, Project Management, Construction Management, Utility Interconnection

We are committed to helping tribes achieve aspirations for Tribal energy sovereignty, resiliency, and sustainability.



Building the BRIDGE to Tribal Resilience, Sustainability and Energy Savings

Our Pathway to Success

Project Development 

Traditional tasks: conduct feasibility studies and energy modeling, design and engineering, secure permits and land rights, coordinate with utilities on infrastructure.

Tribal tasks: collaborate with tribal leadership and communities, consider cultural and environmental assessments, integrate tribal sovereignty and ownership objectives, prioritize workforce development and native business inclusion, identify broader community benefits.

Financial Consulting 

Develop project proformas, identify and apply for federal, state, and tribal grants and incentives tailored to tribal projects, leverage tax credits and rebates, explore financing options such as tribal bonds, loan guarantees, and private investment partnerships.

EPCM 

Procure equipment and materials, manage construction activities, and facilitate ongoing maintenance and support services post-completion.



STATE

Tule River Tribe of California is a proud sovereign nation that strives to improve the livelihood of their members, their community and their surrounding communities.



TULE RIVER
ECONOMIC DEVELOPMENT CORP.

