



PORTSMOUTH EM SITE SPECIFIC ADVISORY BOARD

•OSU Endeavor Center• 1862 Shyville Road • Piketon, Ohio 45661 • (740) 289-5249 •

Proposed Agenda for the July 25, 2024, Board Meeting

Chair

Jody Crabtree

Co-Vice Chair

Herman Potter

Board Members

Sam Brady
Donna Carson
Bryan Davis
Randy Evans
John Hemmings
Wayne McLaughlin
Lisa Pfeifer
Matt Setters
Beth Workman

6:00 pm

Call to order, introductions
Review of agenda

DDFO Comments-Jeremy Davis --15 minutes
Presentation: Overview of Portsmouth Environment Monitoring Data Websites

Federal Coordinator Comments-Greg Simonton --10 minutes

Liaison Comments -- 5 minutes

Administrative Issues

- **National EM SSAB Chairs Recommendation**
- **EM SSAB Recommendation**
 - **Rec 24-01 Priorities for Site Budget**
 - **Rec 24-02 Continued Environmental Monitoring Communications**

Public Comments --15 minutes

Deputy Designated

Federal Official

Jeremy Davis

Final Comments from the Board --15 minutes

Adjourn

DOE Federal Coordinator

Greg Simonton

Support Services

EHI Consultants, Inc.
1862 Shyville Road
Piketon, OH 45661
Phone 740.289.5249
Fax 740.289.1578



PORTSMOUTH PADUCAH
PROJECT OFFICE

PORTS Websites

July 25, 2024

Jeremy Davis,
Portsmouth Site Lead &
DDFO

www.energy.gov/PPPO

Y-318 Demolition Safety Approach Data Contact Us

Our Commitment

The Department of Energy will complete demolition of the Portsmouth Casses (Mellon Plant) process buildings safely, delivering on our mission to fully clean up the Portsmouth site. We will build trust with our community partners through timely, transparent release of monitoring data and other project information and we will maintain an open dialogue throughout the project.

Data Dashboard

What is Environmental Monitoring?

Green
All recent data is below the protective limit.

Yellow
Non-radiological environmental events such as wildfires.

Red
Recent data has temporarily been above a protective limit.

Weekly
Please click [here](#) for more information on weekly reporting.

Monthly
Please click [here](#) for more information on monthly reporting.

Quarterly
Please click [here](#) for more information on quarterly reporting.

Newsroom Careers Energy.gov Offices National Labs

MOUTH/PADUCAH PROJECT OFFICE ABOUT US SERVICES PORTSMOUTH SITE PADUCAH SITE

PORTSMOUTH SITE

Portsmouth Site

Portsmouth/Paducah Project Office



Energy.Gov

ENERGY.GOV

Newsroom

Careers

Energy.gov Offices

National Labs

Search Energy.gov



PORTSMOUTH/PADUCAH PROJECT OFFICE

ABOUT US

SERVICES

PORTSMOUTH SITE

PADUCAH SITE

DUF6 CONVERSION

PORTSMOUTH SITE

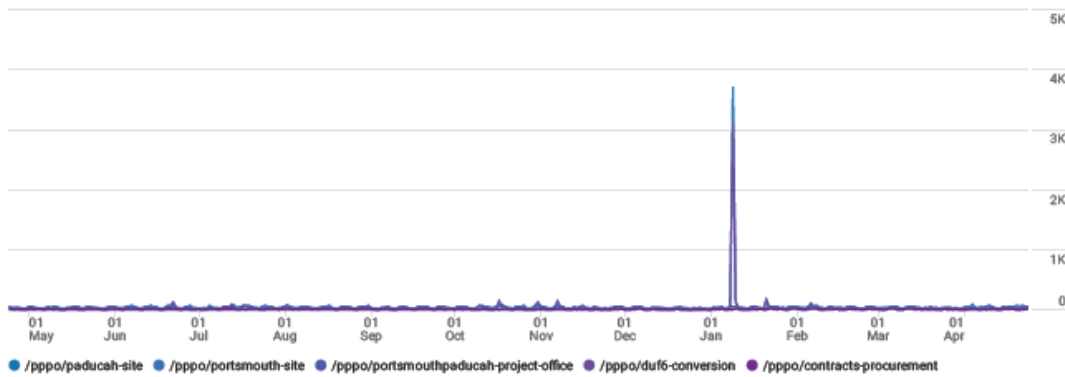


<https://www.energy.gov/pppo/portsmouth-site>

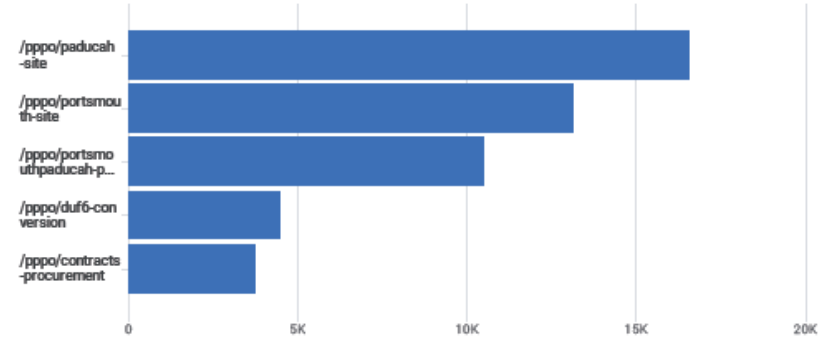


User Report: April 2023 to April 2024

Views by Page path and screen class over time



Views by Page path and screen class



Search...

Rows per page: 100 Go to: 1 < 1-100 of 484 >

Page path and screen class	Views	Users	Views per user	Average engagement time	Event count	Key events	Total revenue
	120,790 100% of total	67,485 100% of total	1.79 Avg 0%	35s Avg 0%	381,130 100% of total	0.00	\$0.00
1 /pppo/paducah-site	16,555	11,937	1.39	29s	49,352	0.00	\$0.00
2 /pppo/portsmouth-site	13,159	8,919	1.48	44s	44,970	0.00	\$0.00
3 /pppo/portsmouthpaducah-project-office	10,510	5,687	1.85	37s	32,378	0.00	\$0.00
4 /pppo/duf6-conversion	4,472	4,296	1.04	12s	10,171	0.00	\$0.00

Total Users: 120,790

Portsmouth Site: 13,159



PORTSDemo Website

PortsDemo Information

- X-326 Demo Updates
- Safety Information
- Data
 - Weekly
 - Monthly
 - ASER archive
- Links
 - PEGASIS
 - Energy.gov
 - PORTS Virtual Museum

<https://portsdemo.com/>

Particulate Matter PM_{2.5}

PM_{2.5} is very small dust or droplets, also called particulate matter, that are two and one half microns or less. PM_{2.5} is measured at monitors A50, A51, A52, A53, A54, A72, X326-A01, and X326-A06.

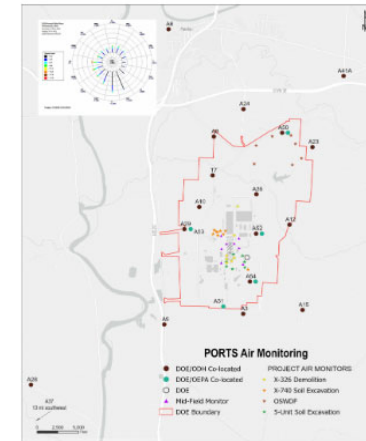
[View PM2.5 Graph](#)

Particulate Matter PM₁₀

PM₁₀ is small dust or droplets, also called particulate matter, that are ten microns or less. PM₁₀ is measured at monitors A50, A51, A52, A53, A54, A72, X326-A01, and X326-A06.

[View PM10 Graph](#)

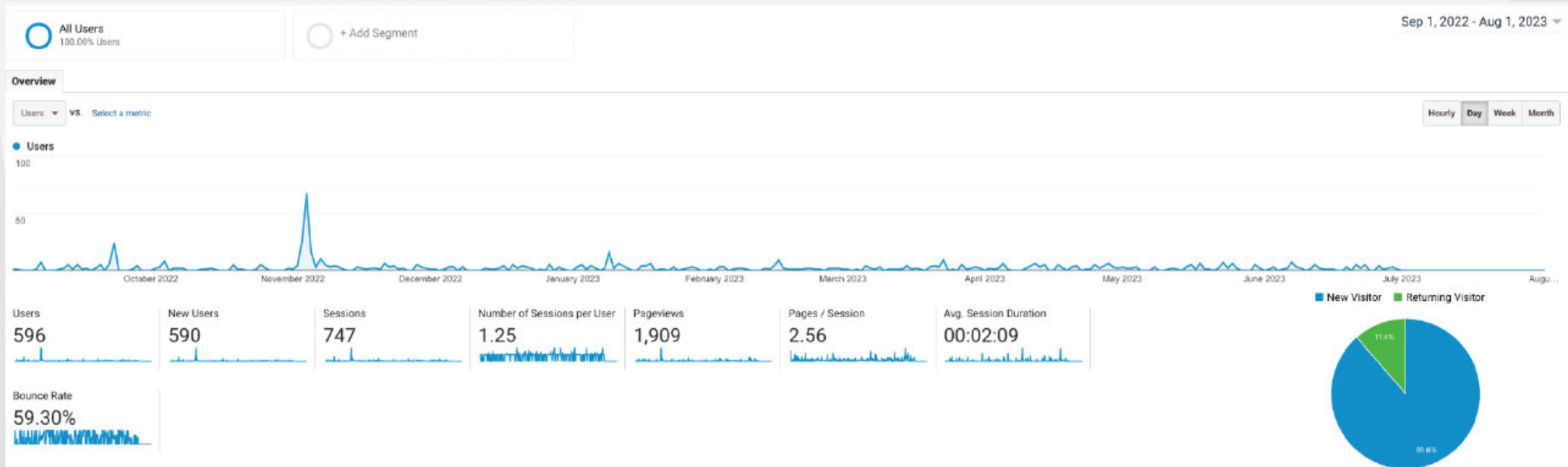
Alpha/Beta



DOE has a network of air monitors that collect data on airborne hazardous pollutants and radionuclides to ensure protection of people and the environment.



User Report: September 2022 to August 2023



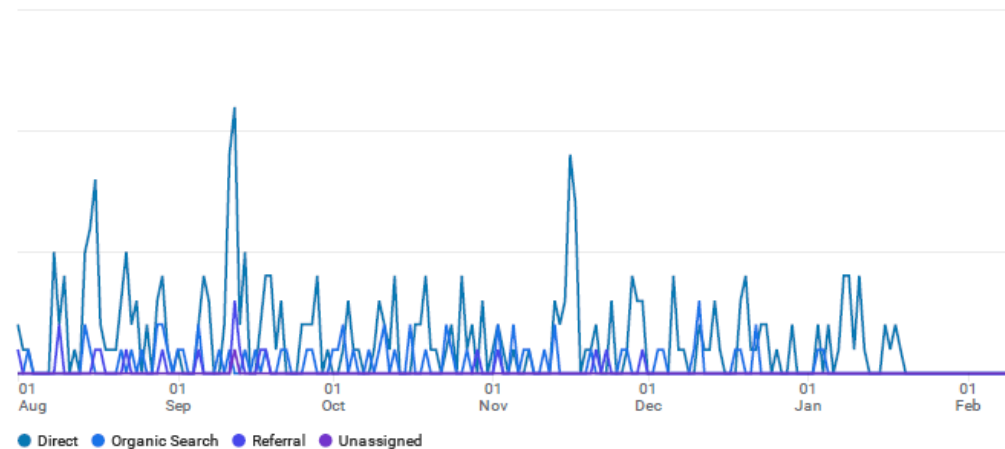
First year of website

- Total Users: 596
- New Users: 590



User Report: August 2023 to March 2024

Users by Session primary channel group (Default Channel Group) over time



Current Year

- Total Users: 309
- New Users: 301

Life of Site

- Total Users: 905
- New Users: 891

Acquisition Overview

- Direct Users: 591
- Organic Search: 162
- Referral: 150
- Undetermined: 2



*Portsmouth EM Site Specific
Advisory Board*

Chair

Jody Crabtree

Vice Chair

Herman Potter

Board Members

Sam Brady

Donna Carson

Bryan Davis

Randy Evans

John Hemmings

Wayne McLaughlin

Lisa Pfeifer

Matt Setters

Beth Workman

Deputy Designated

Federal Official

Jeremy Davis

DOE Federal Coordinator

Greg Simonton

SUPPORT SERVICES

EHI CONSULTANTS

PHONE: 740-289-5249

FAX: 740-289-1578

EMAIL: JULIE@PORTS-SSAB.ORG

RECOMMENDATION 24-01: Portsmouth (PORTS) Environmental Management (EM) Site Specific Advisory Board (SSAB) Priorities for Site Budget

BACKGROUND: In recent years, the U.S. Department of Energy (DOE) Office of Environmental Management (EM) has requested input from advisory boards across the EM complex regarding community priorities as site budgets are formulated.

The PORTS Site Specific Advisory Board (SSAB) continues to recognize that each community has a unique set of circumstances to consider when establishing priorities for large-scale projects. The circumstances surrounding the Portsmouth site, located in an economically depressed area of Appalachia, are an economic climate with high unemployment and a need for advanced worker training. Therefore, a continued focus for the PORTS SSAB is on workforce continuity, job creation, a local workforce development and training program that will prepare the next generation workforce for the energy and environmental technology industry. Our community is full of capable, dedicated professionals who understand our challenges and look for innovative ways to work with government employers and the private sector companies to bring good jobs to the people of our impacted counties.

The PORTS SSAB emphatically supports continued funding for the Portsmouth decontamination and decommissioning (D&D) project to maintain the current employment levels and complete activities that will result in an end state that provides land and buildings and maintains site infrastructure for reindustrialization to ensure workforce stability during and after the D&D project. It is with confidence, and these critical circumstances for the Portsmouth site in mind, that PORTS SSAB makes the following recommendation.

As identified in previous recommendations, the PORTS SSAB continues to identify the following priorities as key pathways to success for DOE and the local stakeholders:

RECOMMENDATION: The PORTS EM SSAB again offers the following recommendations, as presented in PORTS SSAB Recommendation 23-01, concerning future budgeting and funding decisions:

- Continue to investigate a path forward for metals recycling. DOE should be commended for the recovery of nickel from all converters. We applaud DOE for its progress on segmentation activities and we look forward to recycling efforts that will make the recovery worthwhile.
- Maintain and update infrastructure to support future reindustrialization. We recognize the collaborative efforts between DOE and the Portsmouth Community Reuse Organization, the Southern Ohio Diversification Initiative (SODI), including communication on infrastructure planning to best position the community for future economic success.
- Transfer property and establish utility use agreements between DOE and SODI to make property and utilities available to SODI for potential development. We want to thank DOE for its efforts related to Parcels 1 and 2 and believe it can be a catalyst for reindustrialization.
- Prepare for modification of the DOE baseline to make allotments for the forthcoming PORTS Site Strategic Plan that is being produced by SODI. The SSAB looks forward to working with DOE and SODI to find ways to coordinate the cleanup plan with the reindustrialization plan.
- Continue recycling efforts through the DOE-SODI Asset Transition Agreement. This program is providing SODI necessary resources to operate and continue its site repurposing activities.
- Support future workforce development and training programs that will prepare the next generation workforce for the D&D project, the region's energy and environmental technology industry, and future reindustrialization of the site.

The PORTS EM SSAB offers the following new recommendations concerning future budgeting and funding decisions:

1. DOE continues to move forward on an accelerated funding approach for the Portsmouth site. The Portsmouth site federal and contractor staff have proven that the technical approach and project management plan implemented for the coordination of D&D work, landfill excavation and waste cell construction and operation has been an unmitigated success.
2. DOE pursues inflation- adjusted funding to maintain stable spending levels. The greatest threat to successful site remediation is one of instability based on potentially inconsistent funding levels. Stable funding adjusted for inflation is the critical piece for site success.
3. DOE continues to support community investment initiatives through Community Commitment Plans in upcoming contracts. The Community Commitment Plan (CCP) as directed by JEDISO complements the vital work being done by SODI to bolster economic growth through the 4-county subregion directly impacted by the DOE site. As of June 2024, CCP investments over the last ten years totaling \$3.1M have helped drive and facilitate the economic growth of the region through 170

projects valued at \$993M. This growth is due to steady support from the CCP and a collaborative and shared vision for growth and reindustrialization throughout Pike, Ross, Jackson, and Scioto Counties. The relationship and interaction between multiple economic development agencies is at an all-time high in large part due to the supporting funds that come from the CCP.

4. DOE engages the state of Ohio Department of Development, local economic development agencies and labor unions to coordinate training and development options for the current and future work force. Workforce development not only assists DOE in completing their mission in a safe and timely manner, the additional benefit of having trained workers to supplement private industry is key to future economic growth. Having workers at adjacent facilities with an understanding and respect for federal work procedures, safety culture and production standards will make future interactions and shared services between the site and its neighbors more productive and cost effective. DOE should help coordinate its training efforts with potential training capabilities provided by the State of Ohio Department of Development. The state DOD is an untapped resource that could show immediate benefits to DOE and the community at large.
5. DOE recognizes and highlights the collaborative economic development efforts of the 4-county subregion that supports the PORTS site. Pike, Ross, Scioto, and Jackson Counties are unique subregions within the state with specialized workers, an understanding of the nuclear industry, and a willingness to support vital green energy projects. This uniqueness has been a hallmark for many years. Recently the cooperative efforts of the communities, DOE, and elected officials have rung a new era of collaboration and support. DOE and Economic Developers should be proud of these accomplishments, publicly claim this success and continue to look for mutually beneficial avenues for future win-win scenarios.
6. DOE investigates avenues for expedited property transfer. As all parcels transferred from DOE to SODI are spoken for via land sale or first right of refusal, we ask that DOE help the community maintain this momentum for growth and development and look for additional property to transfer in a timely manner. The SSAB thanks DOE for their efforts to expedite the process and for their willingness to continue to work with SODI moving forward. The board recommends that DOE continue to reassess D&D schedules to expedite transfers to continue efforts with property turnover to expedite reindustrialization.

The PORTS SSAB would like to thank DOE for soliciting this input. The Board would like to thank DOE leadership and board management for the improved budget and funding education that has taken place over the last several months. This educational series, along with the emphasis on community health education and environmental monitoring data reporting sessions show a strong commitment to the partnership between DOE and the community.

Thank you for your attention to the Portsmouth D&D project and recognizing its importance to southern Ohio.



*Portsmouth EM Site Specific
Advisory Board*

Chair

Jody Crabtree

Vice Chair

Herman Potter

Board Members

Sam Brady

Donna Carson

Bryan Davis

Randy Evans

John Hemmings

Wayne McLaughlin

Lisa Pfeifer

Matt Setters

Beth Workman

Deputy Designated

Federal Official

Jeremy Davis

DOE Federal Coordinator

Greg Simonton

SUPPORT SERVICES

EHI CONSULTANTS

PHONE: 740-289-5249

FAX: 740-289-1578

EMAIL: JULIE@PORTS-SSAB.ORG

RECOMMENDATION 24-02: Portsmouth (PORTS) Environmental Management (EM) Site Specific Advisory Board (SSAB) Recommends Continued Environmental Monitoring Communications

Background: In the spring of 2019, community concerns arose following the distribution of the 2017 Portsmouth Annual Site Environmental Report (ASER) that indicated transuranic contaminants were detected in an air monitor adjacent to Zahn's Corner Middle School. Additional information followed that another transuranic element was discovered in 2018 monitoring, which preceded the Scioto Valley Local School District closing Zahn's Corner Middle School in May 2019.

The following January, The PORTS Site Specific Advisory Board (SSAB) issued *Recommendation 20-01: PORTS EM SSAB Recommendation on Enhanced Communication Efforts Related to Environmental Monitoring Information*. The Board recommended that DOE provide more timely information on all environmental monitoring data related to the PORTS site. The Recommendation suggested that the data be made available in easy to access online locations as well as in regional libraries for those who don't have access to online tools.

In response to SSAB Recommendation 20-01, as well as a commitment to transparency and accountability in matters concerning human health and the environment, DOE established the *portsdemo.com* website that provided timely information and updates throughout the last several years. In particular, special focus was given to the environmental monitoring data associated with the open air demolition of the X-326 uranium-enrichment Process Building.

The SSAB commends DOE, its contractors, and the Ohio Environmental Protection Agency on the collaborative work required to collect, validate, corroborate, and report thousands of points of environmental data. This great effort helped inform and educate the local stakeholders most directly impacted by the cleanup project. This work is a prime example of the benefit of continued open dialogue between all parties with vested interests in the cleanup of the PORTS site.

RECOMMENDATION: The PORTS EM SSAB again offers the following recommendations

- **DOE continue to make communication of environmental monitoring data a priority and provide data in as timely manner as reasonably possible.**
- **DOE should add information, comparable to that provided for the X-326 building, for the upcoming X-333 demolition with similar updates and dashboard data.**

The PORTS SSAB would like to thank DOE for soliciting this input. The Board would like to thank DOE leadership and board management for the improved communication and data reporting efforts. The development and upkeep of the *portsdemo.com* website, along with the emphasis on community health education and environmental monitoring data reporting sessions show a strong commitment to the partnership between DOE and the community.

Thank you for your attention to the Portsmouth D&D project and recognizing its importance to southern Ohio.