

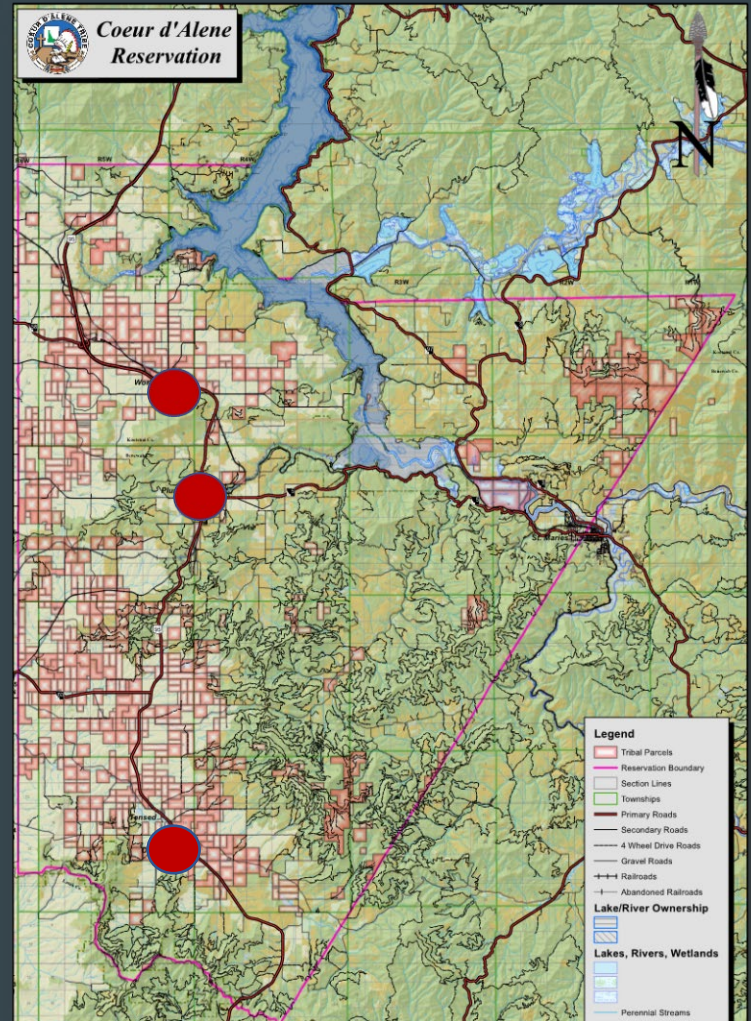
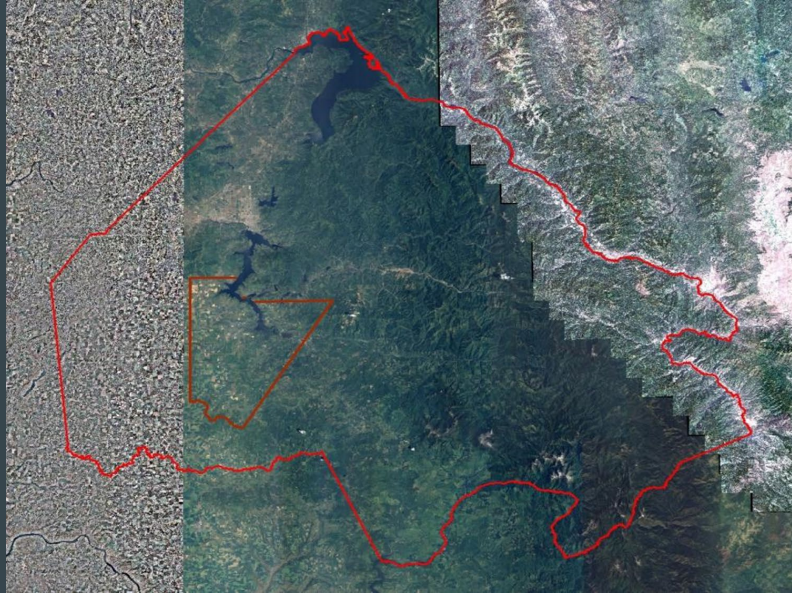


# Coeur d'Alene Tribe Coeur Center Solar Project and Energy Development Tribal Energy Review

Laura Laumatia  
Environmental Programs Manager  
November 21, 2024



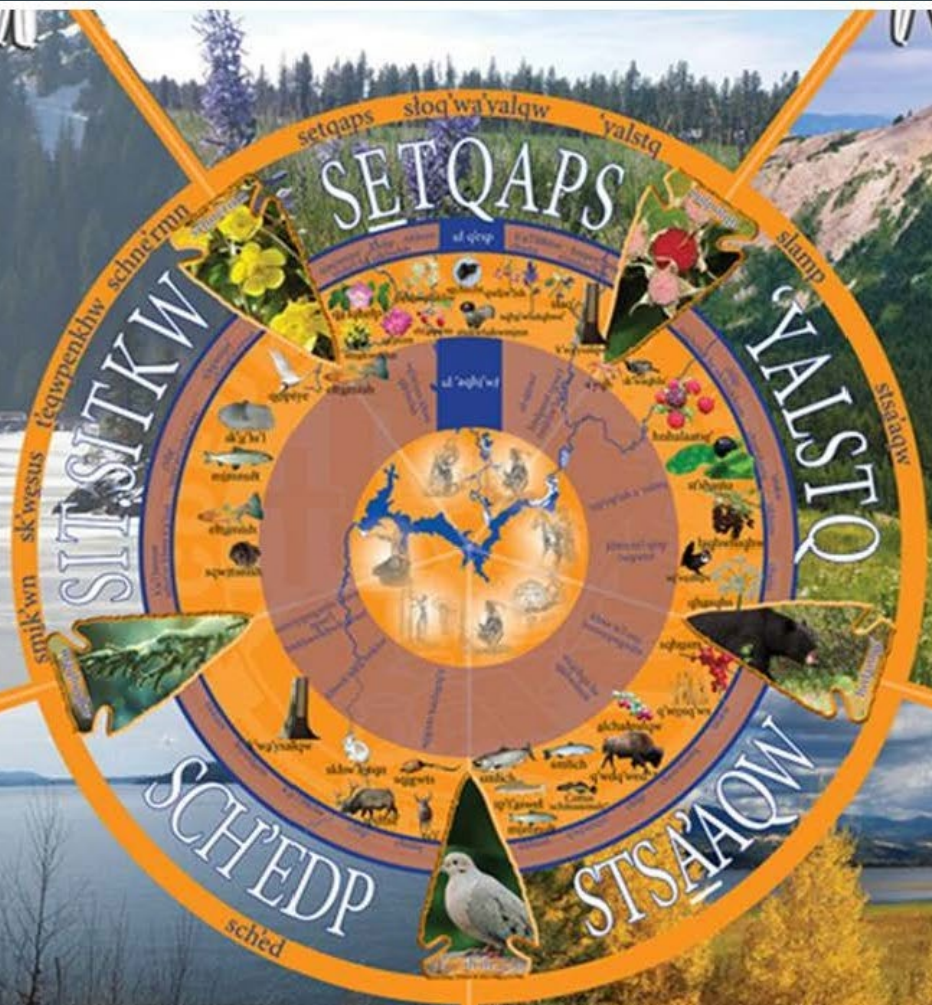
# The location





Moons & Seasons

●	JAN	sit'sitkw (winter)
●	FEB	
●	MAR	
●	APR	setqaps (spring)
●	MAY	
●	JUN	
●	JUL	'yalstq (summer)
●	AUG	
●	SEP	stsa'aw (early fall)
●	OCT	sch'edp (late fall)
●	NOV	
●	DEC	sit'sitkw (winter)





Museum of North Idaho Photo

OFFICE OF INDIAN AFFAIRS,  
WASHINGTON, May 5, 1906.  
Damages sustained by lands  
within Coeur d'Alene Ind.  
Res'v by reason of the dam  
of Washington Water Power Co.

George S. McCreedy, Esq.,  
Alaska Building,  
Seattle, Wash.

Sir: In further response to your letter of March 4, 1906, you  
informed that the Office is now in receipt of a report, dated  
April 4, 1906, from Charles O. Herley, Superintendent in charge  
the Coeur d'Alene Indian Reservation, and W. N. Sims, Special  
Allotting Agent of the same reservation, with reference to the  
damages sustained by the lands of the reservation by reason of  
a dam of the Washington Water Power Company, at Post Falls, Idaho,  
which dam has caused certain parts of the reservation to be  
inundated.

Messrs. Herley and Sims say that it is their opinion  
the valley of the St. Joe River was overflowed before the dam  
was built and that it would be overflowed each season again  
if the dam was entirely removed, the only effect of the dam being  
to retain water upon the land for a longer period than  
the natural yearly overflow would last. They report that the  
floods invariably last through July and that, when if too water  
should recede immediately thereafter, it would be too late to  
plant crops in the valley, hay being the only thing that could  
be raised. They suggest that if the Washington Water Power  
Company could be prevailed upon to pay the sum of \$1.25 per acre  
damage on the amount of land inundated during the dry season,  
for the benefit of the Indians, it would be a greater amount  
than could be received for other purposes.







Nine Mile Dam

Upriver Dam Reservoir

Upper Spokane Falls Dam

Spokane Upriver Dam & Facility

The Upriver Hydroelectric Dam

Post Falls South Dam

Post Falls Middle Dam

Post Falls North Dam



# Coeur d'Alene Tribe Environmental Programs Office



Not pictured:  
Maria Legarda,  
K12 Climate,  
Land, and  
Energy  
Outreach  
Specialist



Vacant:  
Climate, Land,  
and Energy  
Outreach and  
Research  
Specialist

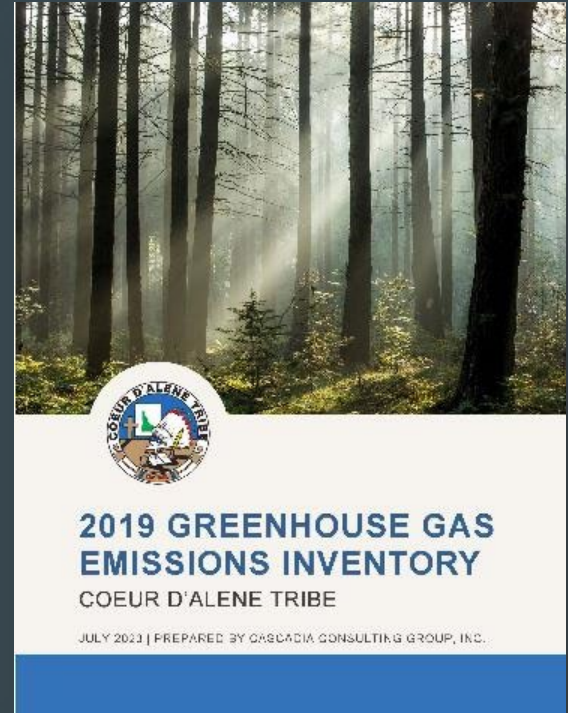
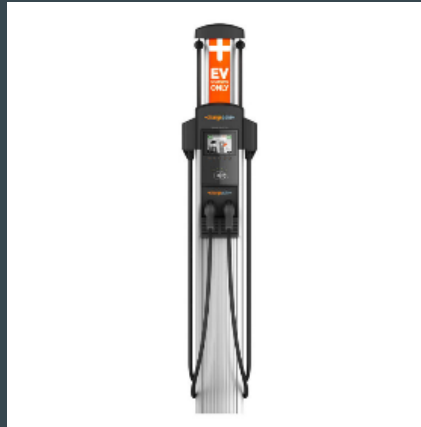


Horticulturist



# Coeur d'Alene Tribal Actions: Energy and Emissions Reductions

- Climate Pollution Reduction Act
- Community Change Grant
- Solar and microgrid installations
- Solar for All (BEF)
- Clean Energy Fellow
- Strategic Energy planning





# Solar Development



# Coeur d'Alene Tribe

## COEUR CENTER SOLAR PROJECT

2317-1602

### TOPIC AREA 1.A.

#### Project Summary

The proposed project will integrate a 35.2 kW solar photovoltaic (PV) system to the Marimn Health Coeur Center in Worley, ID. The Tribe's long term energy goals include "improving the quality of life and providing social and economic benefits across the Reservation." The proposed solar energy project moves the Tribe toward a more sustainable energy system while providing benefits to Tribal and Reservation youth at their new recreation center.



*The solar energy generation will help reduce the total cost of operating the Tribe's youth recreation center.*

#### Key Personnel/Organizations

Laura Laumatia – Project Manager – Environmental Programs Manager

Caj Matheson – Tribal Natural Resources Director

Evan Ramsey – Consultant – Bonneville Environmental Foundation

#### Budget

**Federal funds requested: \$68,129.50**

**Cost-share proposed: \$68,129.50**

**Total Project Costs: \$136,259**

#### Project Outcomes

The proposed solar project will save nearly 41,750 kWhs/year of energy which will reduce the Marimn Health Coeur Center's electricity costs by \$2,600 per year. The project will create 0.8 jobs during construction and installation. The payback time for the Tribe's contribution to the project is within 8 years. This effort will help deepen the Tribe's solar impact with an associated reduction in carbon emissions of nearly 1.2 million pounds. This next step in the Coeur d'Alene Tribe's sustainable energy journey will prove the value of solar to the Worley community and help spur additional new solar development.



# Nimiipuu Energy Training

- 10 trainees
- 40 hours of hands-on training on a residential and commercial install
- Online certification



# The Install





# Solar celebration



# Challenges

Mechanical

Routing

Equipment

Communication

**Saving Grace:**

Relationships!!





# Marimn Health

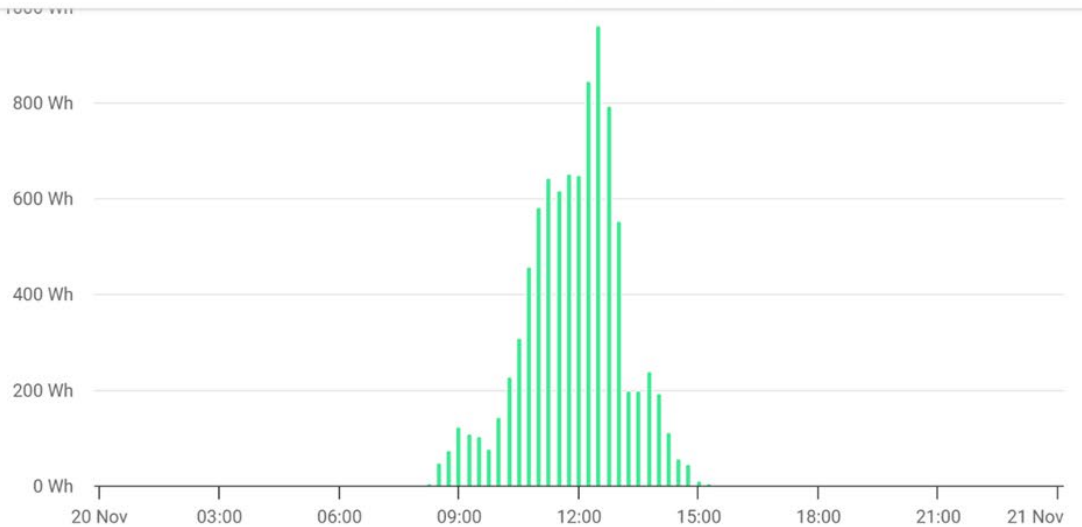
Local Time: 11:07 AM

Last Updated: 3 minutes ago



Custom

20/11/2024 – 21/11/2024



## Environmental Benefits



10,322

Tons of CO<sub>2</sub>  
Emission Saved



170,819

Equivalent Tree  
Planting

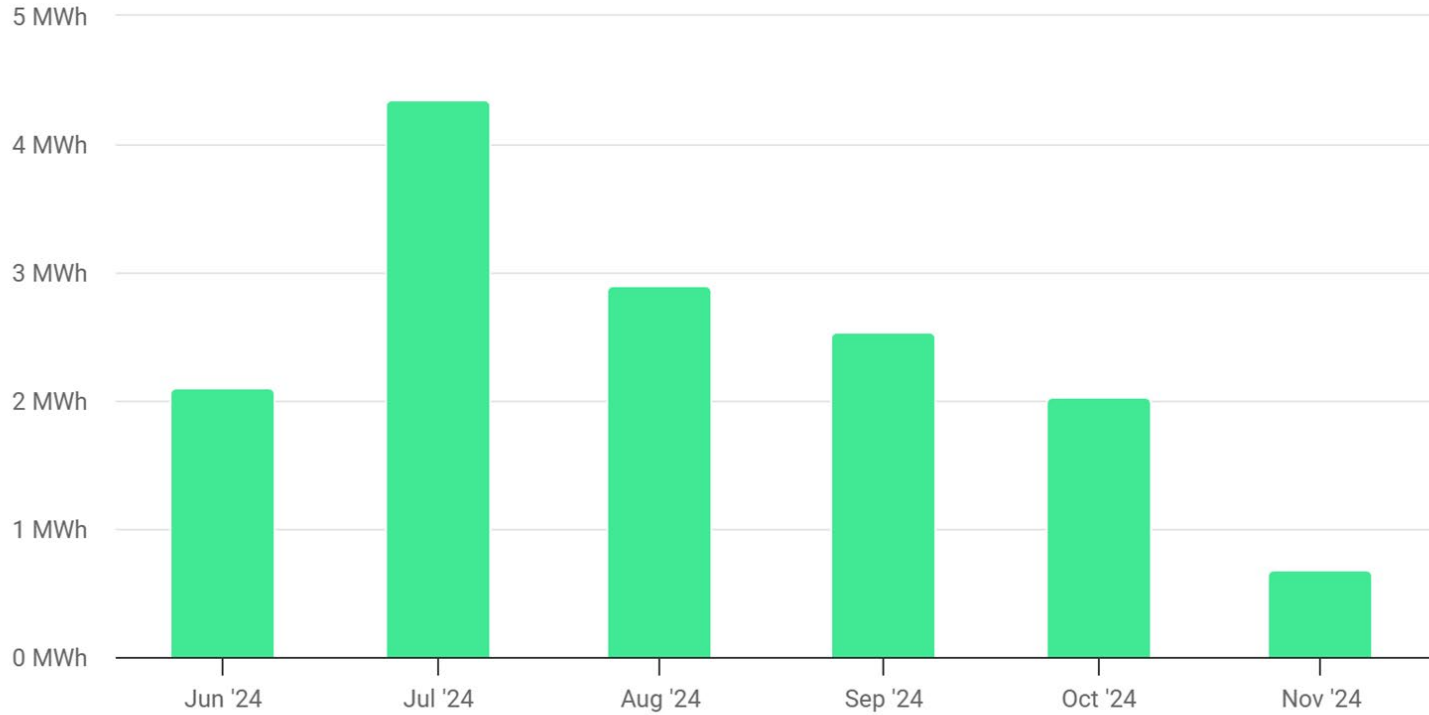


87,599

Km Driven on  
Sunshine

## Site Energy

Last Updated 11/21/2024 11:08 ?







# QUESTIONS ABOUT CLEAN ENERGY?

**WE WANT TO HEAR FROM YOU!**

Join the Coeur d'Alene Tribe and the U.S. Department of Energy in a discussion around electric vehicles (EVs), clean energy alternatives, and the climate work that the Tribe is doing on the reservation!



**Tuesday October 22nd**  
**4:30 - 7:30 p.m.**  
*Rose Creek Longhouse*

4:30 p.m. Dinner will be served

4:30 p.m. FAQs about EVs (local EV owners will be there to share their experiences)

5:30 p.m. Learn about renewable energy options, the impacts of climate change on the Tribe, and how we are taking action

---

For questions or ideas, contact: Aiyana James  
aiyana.james2@cdatribe-nsn.gov (208) 686-1088

## Current Efforts



# Our Energy Vision:

*We, the Coeur d'Alene Tribe, envision sustainable energy that empowers our community, asserts our sovereignty, and reflects our values as stewards of the land. Through collaboration and innovation, our energy development will foster a self-reliant and thriving future for generations to come.*

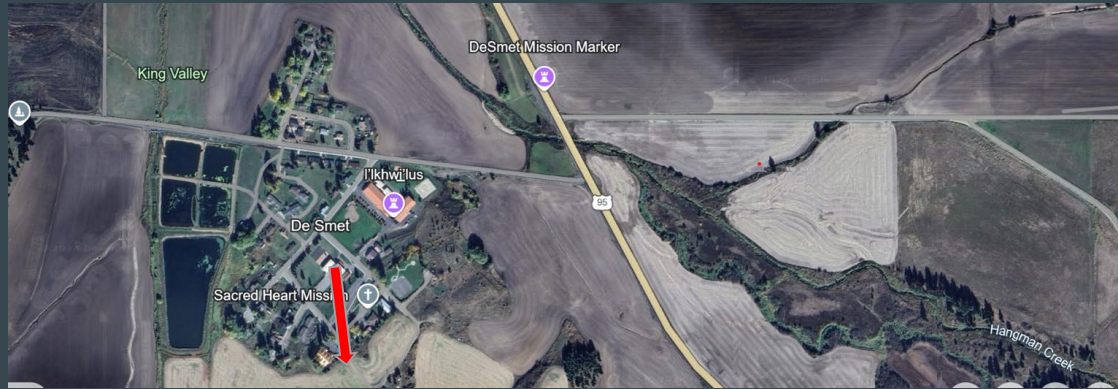
- Capacity Building
- Education and Workforce Development
- Emergency Management
- Energy Efficiency
- Energy Efficiency Codes and Standards)
- Energy-Related Business Development
- Outreach
- Residential and Facility Scale Energy Generation
- Resilience
- Transportation
- Tribal Utility Authority





## Challenges:

- Increased risks from climate impacts
- Federal funding landscape
- Workforce development
- Public disinformation





# Thank you to our partners

## Coeur Center Project:

- Department of Energy OIE
- Tribal Solar Accelerator Fund
- Bonneville Environmental Foundation
- Nimiipuu Energy
- Marimn Health and Wellness

## Energy Development

- NREL and OIE
- INL
- Upper Columbia United Tribes
- University of Idaho, Boise State University, Idaho State University
- Treasure Valley Clean Cities Coalition
- State of Washington Climate Commitment Act
- Idaho Tribal informal collaboration



Questions?

lim lemtsh

