



October 21, 2024

SUBJECT: Notice of Availability of Draft Environmental Assessment for the TerraPower, LLC's Kemmerer Unit 1 Preliminary Activities, Lincoln County, WY (DOE/EA-2264)

The U. S. Department of Energy (DOE) is requesting public input on the draft Environmental Assessment (EA) for TerraPower, LLC's (TerraPower) Kemmerer Unit 1 Preliminary Activities, located in Lincoln County, Wyoming. Kemmerer Unit 1 is based on TerraPower's Natrium Reactor Plant, an 840-megawatt thermal (MWt) pool-type sodium-cooled, fast neutron spectrum reactor (SFR) that contains a molten salt energy storage system which enables the plant to vary its supply of electrical energy to the grid, up to 500 megawatts electric (MWe) net, while maintaining constant reactor power.

DOE is proposing to authorize the expenditure of federal funding by TerraPower to conduct preliminary activities for the Natrium Reactor Plant, Kemmerer Power Station Unit 1. Activities would include but are not limited to site preparation, non-structural backfill, trailers, construction of multiple buildings, installation of underground services, laying foundations, installation of stormwater management ponds, locating portable bathroom facilities, establishing temporary power, and constructing temporary parking areas.

DOE is the lead federal agency in the preparation of the EA. Pursuant to the requirements of the National Environmental Policy Act (42 U.S.C. 4321 et seq.; NEPA), Council on Environmental Quality regulations (40 CFR Parts 1500 to 1508), and DOE NEPA implementing procedures (10 CFR Part 1021), DOE, prepared a draft EA to evaluate the potential direct, indirect, and cumulative impacts of the proposed project.

We formally invite you to engage with us in Government-to-Government consultation(s) regarding the proposed project so that we may be aware and take into consideration your views and possible impacts to the Tribe. If you would like to schedule a consultation meeting regarding the proposed project, please contact Gretchen Applegate, NEPA Document Manager, at (240) 252-0399 or gretchen.applegate@hq.doe.gov, at your earliest convenience. You are also welcome to contact Brian Ó Donnchadha, Tribal Liaison, at (240) 252-8577 or brian.odonnchadha@hq.doe.gov, at your earliest convenience.

Resource Areas Analyzed in the EA

The EA describes and analyzes potential impacts to the human environment that would be caused by the proposed project and, as applicable, identifies possible mitigation measures to reduce or eliminate those impacts. DOE analyzed the following resource areas and issues in the EA:

- Biological Resources
- Socioeconomics
- Environmental Justice
- Cultural and Historic Resources

- Hydrology
- Infrastructure including emergency services, transportation, and traffic
- Accidents and hazards

Comment Period

DOE welcomes your input on the **DOE/EA-2264: TerraPower, LLC's Kemmerer Unit 1 Preliminary Activities, Lincoln County, WY**. In addition to this notice, you can review a detailed project description at: <https://energy.gov/nepa/doeea-2264-terrapower-kemmerer-unit-1-preconstruction-activities-lincoln-county-wy>

DOE invites you to attend an informational public meeting at the South Lincoln Training & Events Center in Kemmerer, WY on the evening of October 29, 2024, from 4 PM – 7 PM MST. The meeting will be held in an open house format with project posters and subject matter experts available to provide information and help answer questions.

To ensure DOE receives your written comments in time for consideration in preparation of the draft EA, please provide them on or before **November 20, 2024**. DOE welcomes your comments by physical or electronic mail.

Provide comments by physical mail to:

U.S. Department of Energy
ATTN: Kyra Perkins
12011 Sunset Hills Rd
Reston, VA 20190

Provide comments by e-mail to:

Gretchen Applegate, DOE NEPA Document Manager
oced.esh@hq.doe.gov

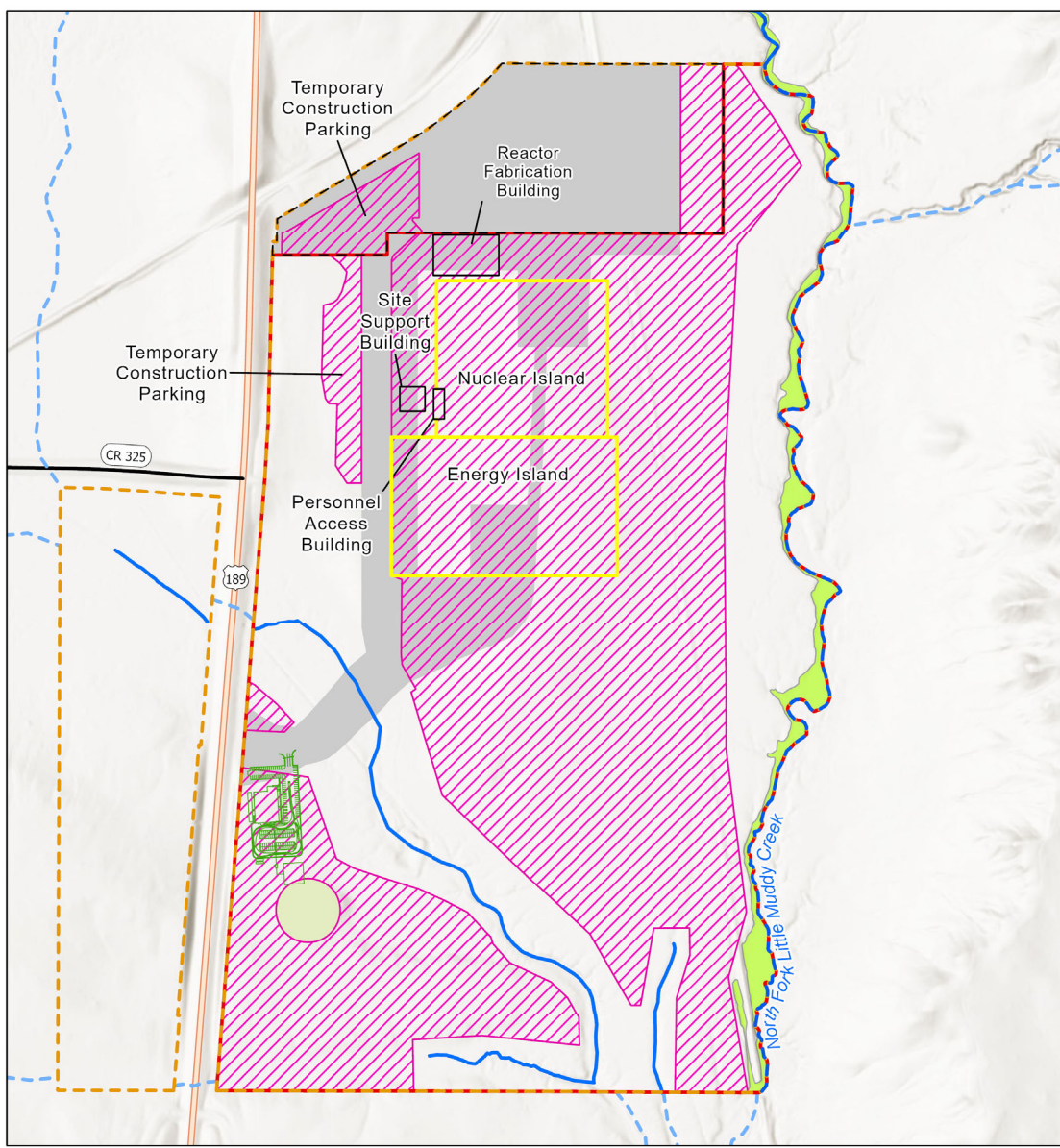
Please indicate in any response to this letter if you would like your comments withheld from the record due to sensitive or proprietary information.

We look forward to hearing from you.

Sincerely,

Gretchen Applegate

Gretchen Applegate
NEPA Specialist



LEGEND

Resource Boundary	Area of Disturbance
Kemmerer Unit 1 Site	Previously Disturbed
TFF Site Area	NHD Stream (Intermittent)
Kemmerer Training Center	Delineated Stream
Meteorological Tower	Delineated PEM Wetland
Building	

0 250 500 1,000 Feet

