



Department of Energy
Western Area Power Administration
Desert Southwest Customer Service Region
P.O. Box 6457
Phoenix, AZ 85005-6457

October 23, 2024

SUBJECT: Notice of Availability of a Draft Environmental Assessment for the MPP-Q01 Interconnection Project (DOE/EA-2208)

Dear Interested Party:

Western Area Power Administration (WAPA) announces the availability of the Draft Environmental Assessment (EA) for the MPP-Q01 Interconnection Project located near Bagdad in Yavapai County, Arizona. Please see the enclosed map for reference. The document tracking number is DOE/EA-2208.

The Draft EA can be accessed online at WAPA's Desert Southwest Region website or at the Department of Energy's website:

- <https://www.wapa.gov/about-wapa/regions/dsw/environment/mpp-q01-interconnection-project/>
- <https://www.energy.gov/nepa/nepa-documents>

A review copy is also available at the Bagdad Public Library, 700 Palo Verde #C, Bagdad, AZ 86321. They are open from 9 a.m. to 5 p.m. Mondays through Fridays. Their phone number is (928) 622-2325.

Comments can be emailed to rhopkins@wapa.gov or submitted in writing to the following address:

Western Area Power Administration, Desert Southwest Region
ATTN: Rebecca Hopkins (CD&E), NEPA Document Manager
P.O. Box 6457
Phoenix, AZ 85005

Comments will be accepted from October 27, 2024 to December 1, 2024. WAPA will respond to substantive comments in the final EA.

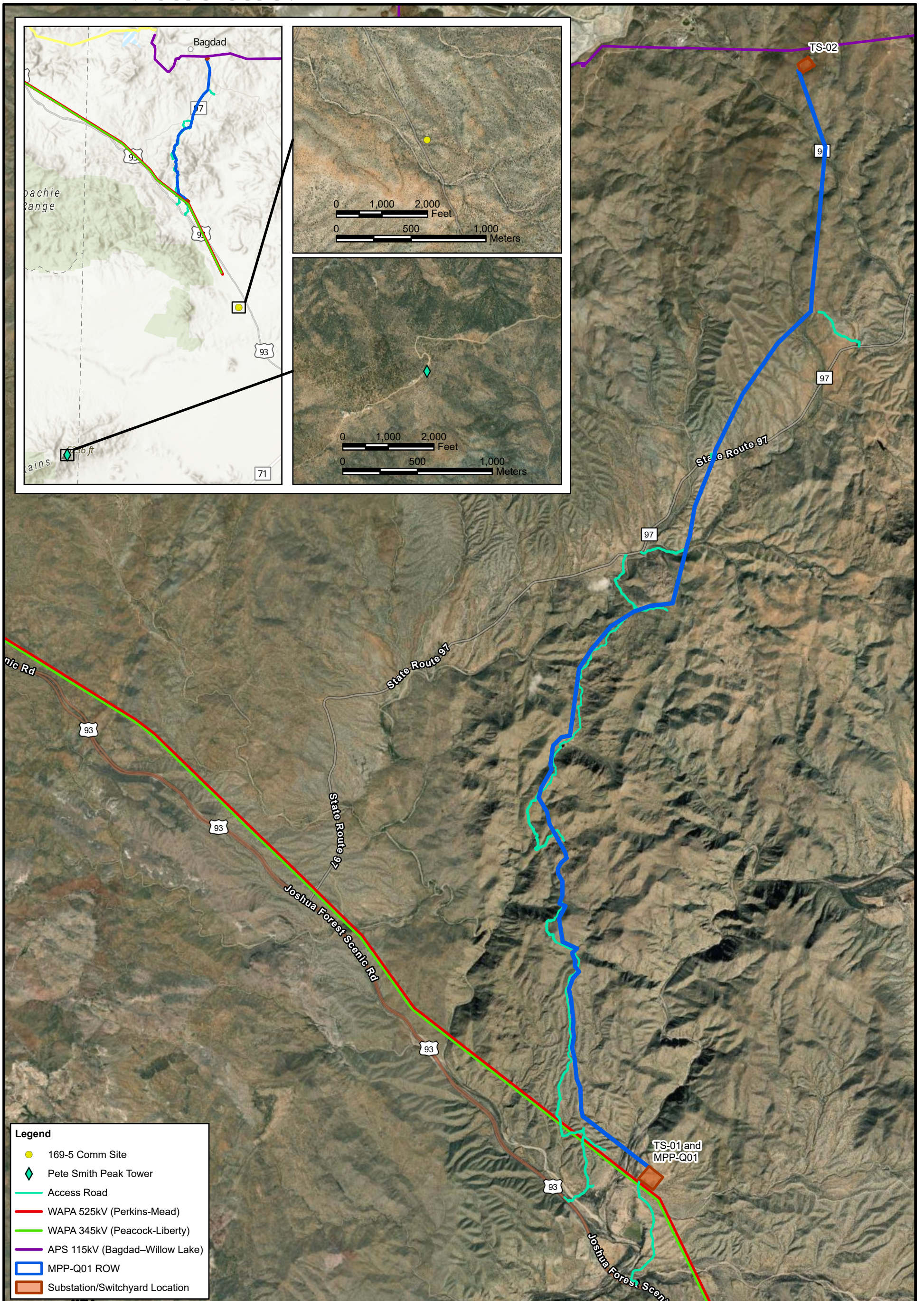
If you need alternative accommodations to obtain copies of the document or have questions about the environmental review process, please contact me at (470) 922-1736.

Thank you for your interest in this project. We look forward to receiving your comments.

Sincerely,

Rebecca Hopkins
Environmental Project Manager
Civil Design & Engineering, Inc.

Enclosure: Project overview map



Legend

- 169-5 Comm Site
- ◆ Pete Smith Peak Tower
- Access Road
- WAPA 525kV (Perkins-Mead)
- WAPA 345kV (Peacock-Liberty)
- APS 115kV (Bagdad-Willow Lake)
- MPP-Q01 ROW
- Substation/Switchyard Location

T8N, R10W, a Portion of Section 6, T8N, R11W, a Portion of Section 1,
 T11N, R8W, a Portion of Section 33,
 T12N, R9W, Portions of Sections 4, 9, 10, and 15,
 T13N, R9W, Portions of Sections 2, 10, 11, 15, 21, 22, 27, 28, 33, and 34,
 T14N, R9W, Portions of Sections 12, 13, 24, 25, 35, and 36,
 La Paz and Yavapai Counties, Arizona
 Projection: NAD 1983 UTM Zone 12N
 Image Source: Maxar 2018-2022

**MPP-Q01 INTERCONNECT
 PROJECT**
 Environmental Assessment
 AERIAL OVERVIEW