
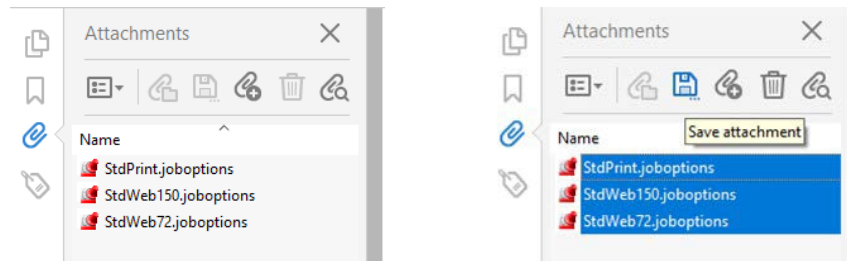





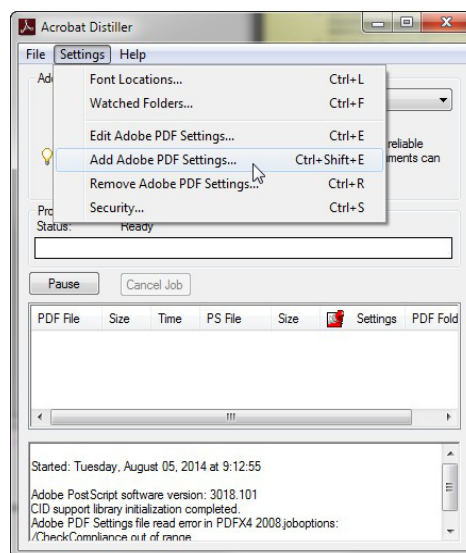
Adobe Acrobat Pro PDF Settings Files

The following is a one-time procedure to load EERE approved PDF Settings files (referred to as Distiller settings in previous Acrobat versions). Follow the instructions below to download them to the appropriate location.

1. First of all, be sure you have opened this PDF in Adobe Acrobat instead of Preview so you can retrieve the attachments.
2. To access the attachments (with this document open in Acrobat), click on the **Attachments** tab () icon located in the **left navigation pane** and the attachments pane will appear to the left of this document.



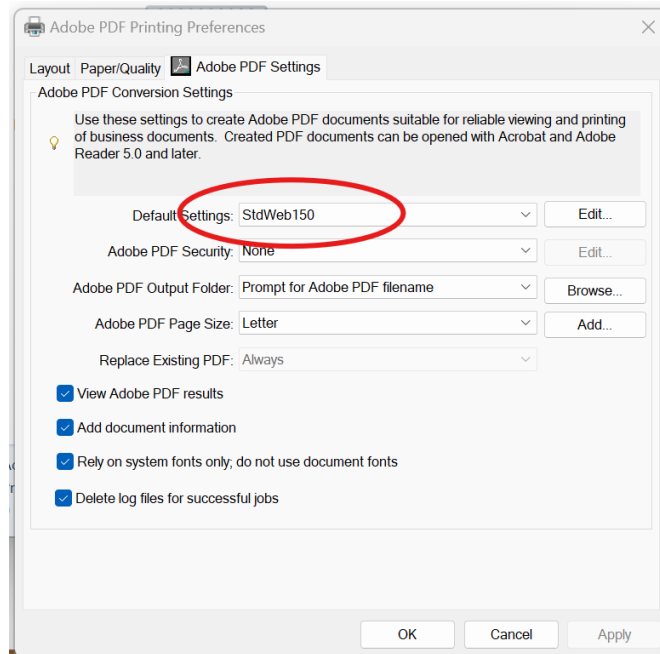
3. Shift-Select the **StdWeb150.joboptions**, **StdWeb72.joboptions**, and **StdPrint.joboptions** file attachments and click on the **Save Attachment** () button, and navigate to where you want to save these files (e.g. your Desktop or My Documents folder).
4. Open the **Acrobat Distiller** application from the Start Menu and choose **Settings>Add Adobe PDF Settings**. Navigate to where you saved the .joboptions files in the previous step, shift-select the three .joboptions files and click **Open**. After you have added the job settings file, select the setting you would use most often - usually **StdWeb150** - from the **Default Settings** drop-down box.



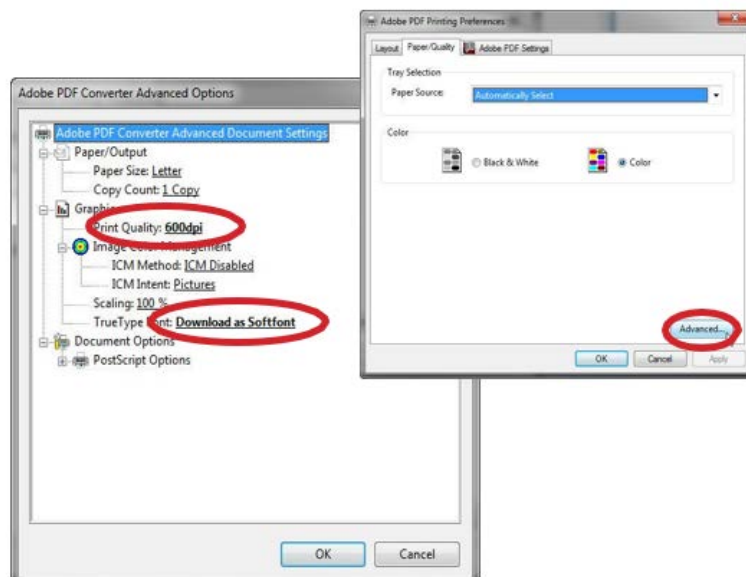
Adobe Acrobat Pro

Windows 11 Printer Configuration

1. Open **Settings > Bluetooth & Devices > Devices > More devices and printer settings** from the Start Menu.
2. Right click on the Adobe PDF printer and choose **Printing Preferences**.
3. In the Adobe PDF Printing Preferences dialogue box, under the **Adobe PDF Settings** tab, select **StdWeb150**

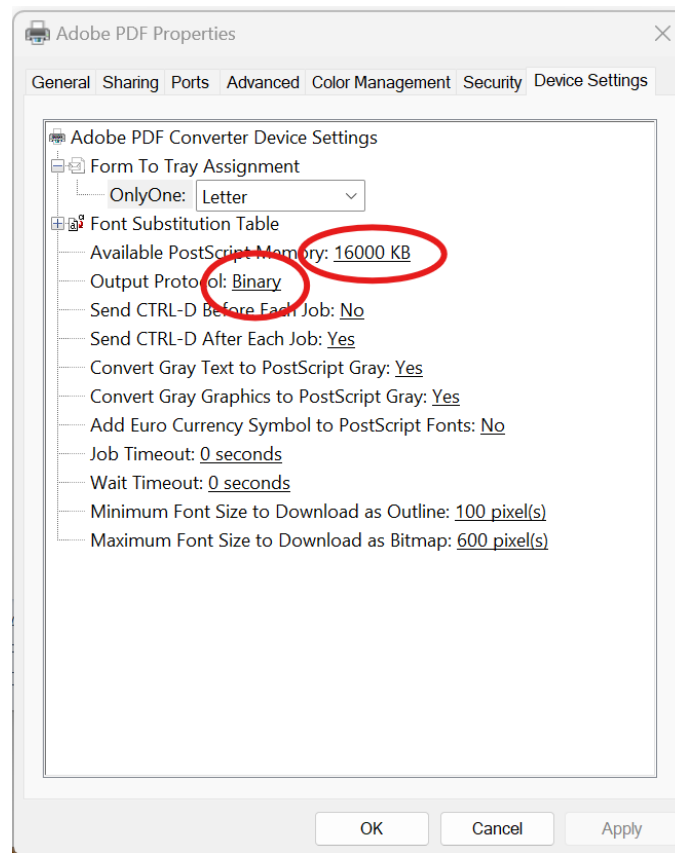


4. Under the **Paper Quality Tab**, click the **Advanced** button to get the Adobe PDF Converter Advanced Options dialog box. Modify **Print Quality: 600dpi** and **TrueType Font: Download as Softfont** and click **OK**. Click **OK** again at the Adobe PDF Printing Defaults dialog box.



NOTE: Users must have **local admin rights** to be able to perform these last two steps. Please contact your system administrator if you are unable to perform these steps.

- Right click on the Adobe PDF printer and select **Printer Properties**. Click on **Device Settings** tab and change **Available PostScript Memory** to **16000 KB**, **Output Protocol** to **Binary**, and **Job Timeout** to **0** seconds.

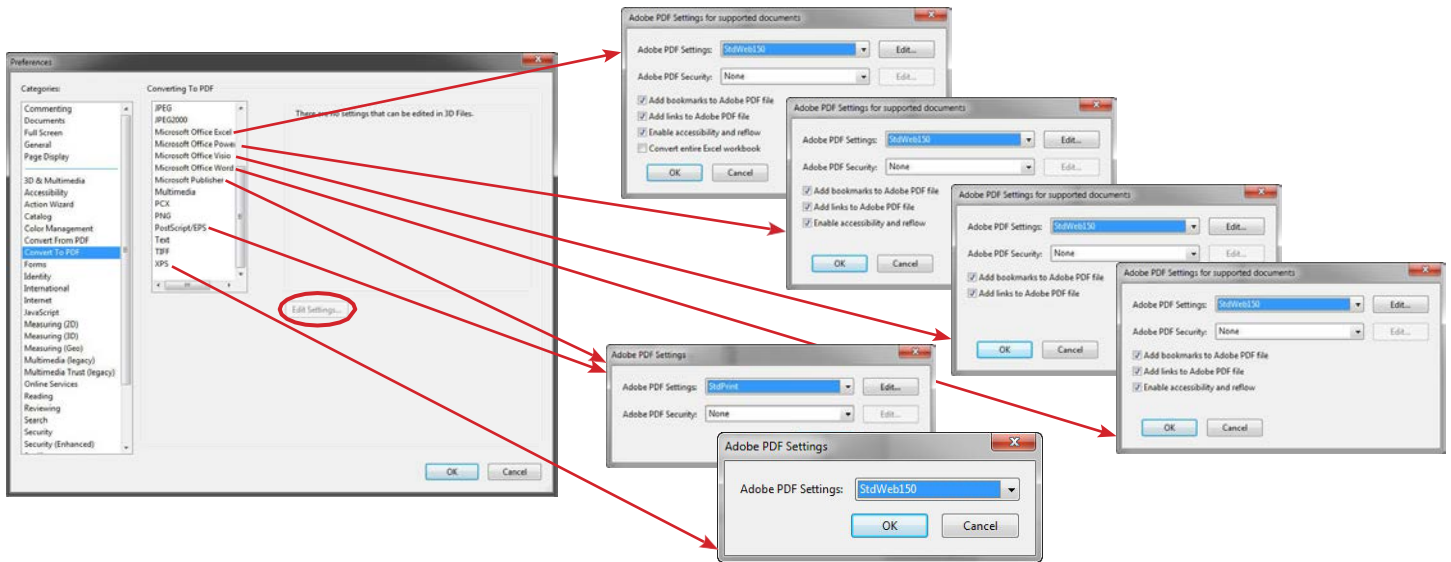


- Click **OK** to exit the Adobe PDF Properties dialog box.

Adobe Acrobat Pro

Application Preferences

1. Open **Acrobat DC Professional** and select **Edit>Preferences>General** from the menu bar to open the preferences dialog box. Select the navigation pane options in the following steps to make configuration changes.
2. Select **Convert To PDF** from the navigation pane on the left, and select **Microsoft Office Excel, PowerPoint, Word, Postscript and XPS** respectively, and modify the **Adobe PDF Settings**: option to **StdWeb150**. In the case of **Postscript**, change the default to **StdPrint** if most of your documents are for printing.



3. Select **Identity** from the navigation pane on the left, and enter your information in the Identity fields. This information will be used when commenting and participating in electronic reviews, etc.

