

**APPENDIX A – LITERATURE CITED**



## *Appendix A – Literature Cited*

---

- Bash, Jeff., Berman, Cara., Bolton, Susan. 2001. Effects of Turbidity and Suspended Solids on Salmonids. Washington State Transportation Center. Accessed May 4, 2023. <https://www.wsdot.wa.gov/research/reports/fullreports/526.1.pdf>.
- BNI Energy Company. 2023. BNI History. Accessed May 3, 2023. <https://www.bnicoal.com/about/bni-history>.
- Bonnichsen, R., and K. Turnmire (editors). 1999. Ice Age Peoples of North America, Environments, Origins, and Adaptations of the First Americans. Oregon State University Press, Corvallis.
- Burns & McDonnell Engineering Company, Inc. 2022. Project Tundra Environmental Information Volume. Prepared for Minnkota Power Cooperative, Inc.
- Bryce, S.A., Omernik, J.M., Pater, D.A., Ulmer, M., Schaar, J., Freeouf, J., Johnson, R., Kuck, P., and Azevedo, S.H. 1996. Ecoregions of North Dakota and South Dakota, (color poster with map, descriptive text, summary tables, and photographs): Reston, Virginia, U.S. Geological Survey (map scale 1:1,500,000). [http://ecologicalregions.info/hnm/ndsd\\_eco.htm](http://ecologicalregions.info/hnm/ndsd_eco.htm).
- CEQ (Council on Environmental Quality). 1997. Environmental Justice – Guidance under the National Environmental Policy Act. Accessed April 6, 2023. [https://www.epa.gov/sites/default/files/2015-02/documents/ej\\_guidance\\_nepa\\_ceq1297.pdf](https://www.epa.gov/sites/default/files/2015-02/documents/ej_guidance_nepa_ceq1297.pdf).
- Croft, M.G., 1973, Ground-water resources of Mercer and Oliver Counties, North Dakota: U.S. Geological Survey, County Ground Water Studies – 15.
- Data USA. 2021. Oliver County, ND. Accessed May 2021 from <https://datausa.io/profile/geo/oliver-county-nd#:~:text=In%20percent202018%20percent2C%20percent20Oliver%20percent20County%20percent2C%20percent20ND,%20percent2C%20percent20a%20percent20percent2D4.43%20percent25%20percent20decrease>
- Department of Energy (DOE). Interagency Working Group on Environmental Justice & NEPA Committee. 2019. Community Guide to Environmental Justice and NEPA Methods. Accessed April 6, 2023. <https://www.energy.gov/lm/articles/community-guide-ej-and-nepa-methods-2019#:~:text=The%20Community%20Guide%20to%20Environmental,low%2Dincome%20populations%2C%20and%2F>.
- DOE. Office of Fossil Energy and Carbon Management. 2023a. Bipartisan Infrastructure Law: Carbon Storage Validation and Testing Funding Opportunity Announcement Number: DE-FOA-0002711. Accessed December 4, 2023. <https://www.energy.gov/fecm/funding-notice-bipartisan-infrastructure-law-carbon-storage-validation-and-testing>
- DOE. Office of Clean Energy Demonstrations. 2023b. Bipartisan Infrastructure Law Carbon Capture Demonstration Projects Program Funding Opportunity Announcement Number: DE-FOA-0002962. Accessed May 1, 2023. <https://oced-exchange.energy.gov/>
- DoH (North Dakota Department of Health). 2019. North Dakota 2018 Integrated Section 305(b) Water Quality Assessment Report and Section 303(d) List of Waters Needing Total Maximum Daily

## *Appendix A – Literature Cited*

---

- Loads. Accessed June 19, 2023. [https://deq.nd.gov/publications/WQ/3\\_WM/TMDL/1\\_IntegratedReports/2018\\_Final\\_ND\\_Integrated\\_Report\\_20190426.pdf](https://deq.nd.gov/publications/WQ/3_WM/TMDL/1_IntegratedReports/2018_Final_ND_Integrated_Report_20190426.pdf).
- DMR (North Dakota Industrial Commission, Department of Mineral Resources). 2022a. Geologic Storage of Carbon Dioxide – Minnkota Center MRYS Broom Creek Storage Facility #1. Case Number 29029, Order Number 31583. Accessed July 17, 2023. <https://www.dmr.nd.gov/dmr/sites/www/files/documents/Oil%20and%20Gas/Class%20VI/Minnkota/BC/C29029.pdf>.
- DMR. 2022b. Geologic Storage of Carbon Dioxide – Minnkota Center MRYS Deadwood Storage Facility #1. Case Number 29032, Order Number 31586. Accessed July 17, 2023.
- Downey, J.S. 1986. Geohydrology of bedrock aquifers in the northern Great Plains in parts of Montana, North Dakota, South Dakota and Wyoming: U.S. Geological Survey Professional Paper 1402-E, 87 p.
- Downey, J.S., and Dinwiddie, G.A. 1988. The regional aquifer system underlying the northern Great Plains in parts of Montana, North Dakota, South Dakota, and Wyoming—summary: U.S. Geological Survey Professional Paper 1402-A.
- EPA. 1974. Information on Levels of Environmental Noise Requisite to Protect Public Health and Welfare with an Adequate Margin of Safety. Office of Noise Abatement and Control. 550/9-74-004. Accessed April 6, 2023. <https://nepis.epa.gov/Exe/ZyPDF.cgi/2000L3LN.PDF?Dockey=2000L3LN.PDF>.
- EPA. 2018a. How’s My Waterway. Nelson Lake ND-10130101-013-L\_00 Waterbody Report. Square Butte Creek ND-10130101-009-S\_00 Waterbody Report. Accessed April 3, 2023. [https://mywaterway.epa.gov/waterbody-report/21NDHDWQ/ND-10130101-013-L\\_00/2018](https://mywaterway.epa.gov/waterbody-report/21NDHDWQ/ND-10130101-013-L_00/2018).
- EPA. 2018b. Sole Source Aquifers of the Safe Drinking Water Act of 1974 (Public Law 93-523, 42 U.S.C. 300 et seq.). Accessed April 3, 2023. <https://services.arcgis.com/cJ9YHowT8TU7DUyn/arcgis/rest/services/SoleSourceAquifers/FeatureServer>.
- EPA. 2002. EPA Office of Water. Office of Wetlands, Oceans, and Watersheds. Functions and Values of Wetlands Factsheet EPA 843-F-01-002c. September. Accessed April 3, 2023. <https://nepis.epa.gov/Exe/ZyPDF.cgi/200053Q1.PDF?Dockey=200053Q1.PDF>.
- EPA. 2022. Interactive Map of Air Quality Monitors. Federal Class 1 Areas Layers. Accessed March 29, 2023. <https://www.epa.gov/outdoor-air-quality-data/interactive-map-air-quality-monitors#:~:text=The%20AirData%20Air%20Quality%20Monitors,daily%20and%20annual%20summary%20data>
- EPA (U.S. Environmental Protection Agency). 2023a. Causal Analysis/Diagnosis Decision Information System (CADDIS), Volume II - Sediments. Accessed April 3, 2023. <https://www.epa.gov/caddis-vol2/sediments>.

## *Appendix A – Literature Cited*

---

- EPA. 2023b. Greenhouse Gas Inventory Guidance Indirect Emissions from Purchased Electricity. Accessed January 2024. <https://www.epa.gov/sites/default/files/2020-12/documents/electricityemissions.pdf> (EPA 2023b.)
- Ewers, J. 1980. The Horse in Blackfoot Indian Culture. Reprinted, Smithsonian Institution, Washington, D.C. Originally published 1955, Bureau of American Ethnology Bulletin 159, Smithsonian Institution.
- FEMA. 1987. Flood Insurance Rate Map (FIRM) for Oliver County, North Dakota, and incorporated areas. Panels 3800770275A & 3800770175A. Accessed March 30, 2023.
- FEMA. 2005. National Flood Insurance Program (NFIP) Floodplain Management Requirements. Study Guide and Desk Reference for Local Officials – FEMA 480. Accessed March 30, 2023. [https://www.fema.gov/sites/default/files/documents/fema-480\\_floodplain-management-study-guide\\_local-officials.pdf](https://www.fema.gov/sites/default/files/documents/fema-480_floodplain-management-study-guide_local-officials.pdf).
- FEMA (Federal Emergency Management Agency). 2007. Floodplain Management: Principles and Current Practices. Chapter 8: Floodplain Natural Resources and Functions. FEMA Emergency Management Institute. Accessed March 30, 2023. <https://training.fema.gov/hiedu/docs/fmc/chapter%208%20-%20floodplain%20natural%20resources%20and%20functions.pdf>.
- FEMA. 2023. National Flood Hazard Layer Viewer. Accessed April 3, 2023. <https://hazards-fema.maps.arcgis.com/apps/webappviewer/index.html?id=8b0adb51996444d4879338b5529aa9cd>.
- Fischer, K. 2013. Groundwater flow model inversion to assess water availability in the Fox Hills– Hell Creek Aquifer: North Dakota State Water Commission Water Resources Investigation No. 54.
- Frison, G. 1991. Prehistoric Hunters of the High Plains (Second Edition), Academic Press, San Diego, California.
- Frison, G., and R. Mainfort. 1996. Archaeology and Biological Resources of the Great Plains, Arkansas Archeological Survey Research Series, Fayetteville. No. 47:5-7.
- Glazewski, K.A., Grove, M.M., Peck, W.D., Gorecki, C.D., Steadman, E.N., and Harju, J.A. 2015. Characterization of the PCOR Partnership Region: Plains CO<sub>2</sub> Reduction (PCOR) Partnership topical report for U.S. Department of Energy and multi-clients, Grand Forks, North Dakota, Energy & Environmental Research Center, January.
- Golder Associates, Inc. 2016. Permit Application Class I (Non-hazardous) Injection Well Permit Application, Milton R. Young Station.
- Housing and Urban Development. No date. Tribal Directory Assessment Tool. Accessed April 10, 2023. <https://egis.hud.gov/TDAT/>.

## *Appendix A – Literature Cited*

---

- Interagency Working Group (IWG) on Environmental Justice (EJ) & NEPA Committee. 2019. Community Guide to Environmental Justice and NEPA Methods. Accessed April 6, 2023. <https://www.energy.gov/lm/articles/community-guide-ej-and-nepa-methods-2019>.
- McNees, L., and J. Lowe. 1999. Cultural Overview. In *Archaeological Investigations along the Wyoming Segment of the Express Pipeline*. TRC Mariah, Laramie, Wyoming.
- NRCS 2008. Soil Quality Indicators. Accessed April 3, 2023. <https://www.nrcs.usda.gov/sites/default/files/2023-01/Soil%20Quality-Indicators-Bulk%20Density.pdf>.
- NRCS. 2022. Land Resource Regions and Major Land Resource Areas of the United States, the Caribbean, and the Pacific Basin. Accessed April 3, 2023. [https://www.nrcs.usda.gov/sites/default/files/2022-10/AgHandbook296\\_text\\_low-res.pdf](https://www.nrcs.usda.gov/sites/default/files/2022-10/AgHandbook296_text_low-res.pdf).
- NRCS (Natural Resources Conservation Science). 2023a. United States Department of Agriculture (USDA). Web Soil Survey. Accessed April 3, 2023. <http://websoilsurvey.nrcs.usda.gov/>.
- NRCS. 2023b. Soil Data Access (SDA) Prime and other Important Farmlands. Accessed April 3, 2023. [https://efotg.sc.egov.usda.gov/references/public/LA/Prime\\_and\\_other\\_Important\\_Farmland.html#:~:text=Prime%20farmland%2C%20as%20defined%20by,is%20available%20for%20these%20uses](https://efotg.sc.egov.usda.gov/references/public/LA/Prime_and_other_Important_Farmland.html#:~:text=Prime%20farmland%2C%20as%20defined%20by,is%20available%20for%20these%20uses).
- NRCS. 2023c. Hydric Soils. Accessed April 3, 2023. <https://www.nrcs.usda.gov/conservation-basics/natural-resource-concerns/soil/hydric-soils>.
- NRCS. 2023d. Erosion. Accessed April 3, 2023. <https://www.climatehubs.usda.gov/climate-impacts/erosion>.
- NOAA (National Oceanic and Atmospheric Administration). 2020. U.S. Climate Normals Quick Access, Bismarck, North Dakota. Accessed March 29, 2023. <https://www.ncei.noaa.gov/access/us-climate-normals/#dataset=normals-monthly&timeframe=30&station=USW00024011>.
- NDGF. 2015. North Dakota State Wildlife Action Plan. Bismarck, ND. Accessed April 4, 2023. [https://gf.nd.gov/sites/default/files/publications/swap-2015\\_0.pdf](https://gf.nd.gov/sites/default/files/publications/swap-2015_0.pdf).
- NDGF (North Dakota Game and Fish Department). 2020. Nelson Lake, Oliver County – Lake Statistics. Accessed March 31, 2023. <https://gf.nd.gov/gnf/maps/fishing/lakecontours/nelsonoliver2020.pdf>.
- NDGF. 2021. Threatened and Endangered Species, ESA Listed Species. Accessed April 4, 2023. <https://gf.nd.gov/wildlife/endangered>.
- NDGF. 2022. North Dakota Fishing Waters. Accessed April 4, 2022. <https://gf.nd.gov/magazine/2022/mar-apr/2022-north-dakota-fishing-waters>.
- NDGF. 2023a. Wildlife Species Identification (Common, Game, and SCP Species). Accessed April 4, 2023. <https://gf.nd.gov/wildlife/id>.

- NDGF. 2023b. Freshwater Mussels. Accessed April 4, 2023. <https://gf.nd.gov/wildlife/id/freshwater-mussels>.
- NDGS (North Dakota Geological Survey). 2021. Paleontology of Theodore Roosevelt National Park. Accessed April 3, 2023. <https://www.dmr.nd.gov/ndgs/ndnotes/ndn9.asp>
- North Dakota Water Commission. 2023. North Dakota Risk Assessment MapService (NDRAM). Accessed April 3, 2023. <https://ndram.dwr.nd.gov/>.
- National Park Service. 2023. National Register of Historic Places. Accessed April 5, 2023. <https://www.nps.gov/maps/full.html?mapId=7ad17cc9-b808-4ff8-a2f9-a99909164466>.
- Peck, W.D., Liu, G., Klenner, R.C.L., Grove, M.M., Gorecki, C.D., Steadman, E.N., and Harju, J.A. 2014. Storage capacity and regional implications for large-scale storage in the basal Cambrian system: Plains CO<sub>2</sub> Reduction (PCOR) Partnership Phase III Task 16 Deliverable D92 for U.S. Department of Energy National Energy Technology Laboratory Cooperative Agreement No. DE-FC26-05NT42592, EERC Publication 2014-EERC-05-12, Grand Forks, North Dakota, Energy & Environmental Research Center, March. <https://edx.netl.doe.gov/dataset/storage-capacity-and-regional-implications-for-large-scale-storage-in-the-basal-cambrian-system>
- Ruebelmann, G. 1983. An Overview of the Archaeology and Prehistory of the Lewiston Bureau of Land Management District, Montana. *Archaeology in Montana* 24:3-156.
- SHPO (North Dakota State Historical Society, State Historic Preservation Office). 2020. North Dakota SHPO Guidelines Manual for Cultural Resource Inventory Projects. Accessed July 17, 2023. <https://www.history.nd.gov/hp/PDFinfo/North-Dakota-SHPO-Guidelines-Manual-for-Cultural-Resource-Inventory-Projects.pdf>.
- Stanford, D. 1999. Paleoindian Archaeology and Late Pleistocene Environments in the Plains and Southwestern United States, Center for the Study of the First American, *Ice Age Peoples of North America, Environments, Origins, and Adaptations of the First Americans*. Robson Bonnichesen and Karen Turnmire (editors) Oregon State University Press, Corvallis.
- Thamke, J.N., LeCain, G.D., Ryter, D.W., Sando, R., and Long, A.J. 2014. Hydrogeologic framework of the uppermost principal aquifer systems in the Williston and Powder River structural basins, United States and Canada: U.S. Geological Survey Groundwater Resources Program Scientific Investigations Report 2014-5047.
- Trapp, H., and Croft, M.G. 1975. Geology and ground water resources of Hettinger and Stark Counties North Dakota: U.S. Geological Survey, County Ground Water Studies – 16.
- U.S. Climate Data. 2023. Climate Center – North Dakota. Accessed March 29, 2023. <https://www.usclimatedata.com/climate/center/north-dakota/united-states/usnd0064>.
- USCB (United States Census Bureau). 2021. American Community Survey Demographic and Housing Estimates, 2021. Accessed April 6, 2023.

## *Appendix A – Literature Cited*

---

- [https://data.census.gov/table?q=unemployment&g=010XX00US\\_040XX00US38\\_050XX00US38065\\_160XX00US3813180](https://data.census.gov/table?q=unemployment&g=010XX00US_040XX00US38_050XX00US38065_160XX00US3813180).
- USCB. 2022. QuickFacts. Accessed April 6, 2023.  
<https://www.census.gov/quickfacts/fact/table/olivercountynorthdakota,ND,US/PST045222>.
- USEIA (U.S. Energy Information Administration). 2023. Electricity Data Brower – Milton R Young Power Plant. Accessed May 22, 2023.  
<https://www.eia.gov/electricity/data/browser/#/plant/2823?freq=A&ctype=linechart&ltype=pin&pin=&maptype=0&linechart=ELEC.PLANT.GEN.2823-ALL-ALL.A&columnchart=ELEC.PLANT.GEN.2823-ALL-ALL.A>.
- USFWS (U.S. Fish and Wildlife Service). 2019. National Wetland Inventory: North Dakota. Accessed April 3, 2023. <https://www.fws.gov/wetlands/Data/State-Downloads.html>.
- USFWS. 2021. Birds of Conservation Concern 2021. United States Department of the Interior, U.S. Fish and Wildlife Service, Migratory Birds, Falls Church, Virginia.  
<http://www.fws.gov/birds/management/managed-species/birds-of-conservation-concern.php>
- USFWS. 2023a. Information for Planning and Consultation (IPaC). Accessed May 4, 2023.  
<https://ipac.ecosphere.fws.gov/>.
- USFWS. 2023b. Bald Eagle Species Profile – Environmental Conservation Online System. Accessed April 4, 2023. <https://ecos.fws.gov/ecp/species/1626#ssa>.
- USFWS. 2023c. Golden Eagle Species Profile – Environmental Conservation Online System. Accessed April 4, 2023. <https://ecos.fws.gov/ecp/species/1680>.
- USFWS. 2023d. Piping Plover Species Profile – Environmental Conservation Online System. Accessed April 4, 2023. <https://ecos.fws.gov/ecp/species/B079#crithab>.
- USFWS. 2023e. Whooping Crane Species Profile – Environmental Conservation Online System. Accessed April 4, 2023. <https://ecos.fws.gov/ecp/species/758>.
- USFWS. 2023f. Red Knot Species Profile – Environmental Conservation Online System. Accessed April 4, 2023. <https://ecos.fws.gov/ecp/species/1864>.
- USFWS. 2023g. Northern Long-eared Bat Species Profile – Environmental Conservation Online System. Accessed April 4, 2023. <https://ecos.fws.gov/ecp/species/9045>.
- USFWS. 2023h. Dakota Skipper Species Profile – Environmental Conservation Online System. Accessed April 4, 2023. <https://ecos.fws.gov/ecp/species/1028>.
- USFWS. 2023i. Monarch Butterfly Species Profile – Environmental Conservation Online System. Accessed April 4, 2023. <https://ecos.fws.gov/ecp/species/9743>.
- USFWS. 2023j. Bobolink Species Profile – Environmental Conservation Online System. Accessed April 4, 2023. <https://ecos.fws.gov/ecp/species/9454>.



## *Appendix A – Literature Cited*

---

- USFWS. 2023k. Franklin’s Gull Species Profile – Environmental Conservation Online System. Accessed April 4, 2023. <https://ecos.fws.gov/ecp/species/10567>.
- USFWS. 2023l. Long-eared Owl Species Profile – Environmental Conservation Online System. Accessed April 4, 2023. <https://ecos.fws.gov/ecp/species/3631>.
- USFWS. 2023m. Marbled Godwit Species Profile – Environmental Conservation Online System. Accessed April 4, 2023. <https://ecos.fws.gov/ecp/species/9481>.
- USFWS. 2023n. Prairie Falcon Species Profile – Environmental Conservation Online System. Accessed April 4, 2023. <https://ecos.fws.gov/ecp/species/4736>.
- USFWS. 2023o. Western Grebe Species Profile – Environmental Conservation Online System. Accessed April 4, 2023. <https://ecos.fws.gov/ecp/species/6743>.
- USFWS. 2023p. Willet Species Profile – Environmental Conservation Online System. Accessed April 4, 2023. <https://ecos.fws.gov/ecp/species/10669>.
- USGS (U.S. Geological Survey). No date. Watersheds and Drainage Basins. Accessed March 30, 2023. [https://www.usgs.gov/special-topic/water-science-school/science/watersheds-and-drainage-basins?qt-science\\_center\\_objects=0#qt-science\\_center\\_objects](https://www.usgs.gov/special-topic/water-science-school/science/watersheds-and-drainage-basins?qt-science_center_objects=0#qt-science_center_objects).
- USGS (U.S. Geological Survey). 2019. National Land Cover Dataset (NLCD). Accessed April 5, 2023. <https://www.mrlc.gov/data>.



**APPENDIX B – CATEGORICAL EXCLUSIONS**



NETL F 451.1-1/1  
Revised: 11/24/2014  
Reviewed: 11/24/2014  
(Previous Editions Obsolete)

U.S. DEPARTMENT OF ENERGY - NETL

CATEGORICAL EXCLUSION (CX) DESIGNATION FORM

Project No.: DE-FE0029488 Recipient Name: UND EERC Project Location: Grand Forks, ND

Sub-recipient(s) and Locations:

Schlumberger Carbon Services, Denver, CO; CETER, Gibsonsia, PA and Green Bay, WI; Prairie Public Broadcasting, Fargo, ND; Basin Electric Power Cooperative, Bismarck, ND; field site in Mercer County, ND

NETL Sponsoring Org.: FE/TDIC/Coal/Carbon Storage Team NETL Contact: William O'Dowd

Brief Title of Proposed Action: North Dakota Integrated Carbon Storage Complex Feasibility Study

Brief Description of Activities:

The recipient will characterize one site in ND. The activities include drilling one strat well (with coring, logging, etc.), and collect additional 2-D seismic line. Other activities-outreach, etc.

THE PROPOSED ACTION FALLS WITHIN THE FOLLOWING CATEGORICAL EXCLUSION(S) FROM APPENDICES A AND B TO SUBPART D OF DOE NEPA IMPLEMENTING PROCEDURES (10 CFR 1021):

General Administration/Management

- A1 - Routine business actions
 A9 - Info gathering, analysis, documentation, dissemination, and training
 A11 - Technical advice and planning assistance

Facility Operations

- B1.3 - Routine maintenance and custodial services
 B1.7 - Communication system and data processing equipment acquisition, installation, operation, removal
 B1.15 - Support building or structure, non-waste storage, construction/operation

Safety and Health

- B2.1 - Modifications to enhance workplace habitability
 B2.2 - Installation/improvement of building/equipment instrumentation
 B2.3 - Installation of equipment for personnel safety and health

General Research

- B3.1 - Site characterization/environmental monitoring
 B3.6 - R&D or pilot facility construction/operation/decommissioning
 B3.7 - New infill exploratory, experimental oil/gas/geothermal well construction and/or operation
 B3.9 - Certain CCT demonstration activities, emissions unchanged
 B3.11 - Outdoor tests, experiments on materials and equipment components

Electrical Power and Transmission

- B4.4 - Power management activities (storage, load shaping, and balancing)
 B4.6 - Transmission support addition/modifications at developed facility site
 B4.11 - Construction of power substations and interconnection facilities
 B4.13 - Upgrading and rebuilding existing power lines (< 20 miles)

Conservation, Fossil, and Renewable Energy Activities

- B5.1 - Actions to conserve energy, no indoor air quality degradation
 B5.3 - Modification/abandonment of wells
 B5.5 - Short crude oil/gas/steam/geothermal/carbon dioxide pipeline const/oper within an existing right-of-way (< 20 miles) between existing facilities
 B5.13 - Experimental wells for injection of small quantities of carbon dioxide (< 500,000 tons)
 B5.15 - Small scale renewable energy research/development/pilot projects
 B5.22 - Alternative fuel vehicle fueling stations
 B5.23 - Electric vehicle charging stations

Other

- Specify category: Drill one stratigraphic well-obtain core and logs and sampling
 Specify category:
 Specify category:

This action (1) would not present any extraordinary circumstances such that the action might have a significant impact upon the human environment; (2) is not connected to other actions with potentially significant impacts; (3) is not related to other actions with cumulatively significant impacts; and (4) is not inconsistent with 10 CFR 1021.211 - Interim Actions or 40 CFR 1506.1 - Limitations during the NEPA process.

SELECT ONE OF THE FOLLOWING:

- This Categorical Exclusion includes all tasks and phases in the Statement of Work or Statement of Project Objectives for this project.
 This Categorical Exclusion is only valid for the following tasks/phases and only one strat well. The DOE initiator acknowledges the responsibility to obtain a NEPA determination prior to initiating any activities outside the scope of this Categorical Exclusion.

SELECT ONE OF THE FOLLOWING:

- This Categorical Exclusion includes all locations and activities for this project.
 Additional sites, sub-recipients, or activities cannot be identified at this time. The DOE initiator acknowledges the responsibility to obtain a NEPA determination prior to initiating any activities outside the scope of this Categorical Exclusion.

NOTE: ANY CHANGE(S) TO THE PROJECT SCOPE OR LOCATIONS MAY REQUIRE A NEW NEPA DETERMINATION.

DOE Initiator Signature: William J. O'Dowd

Date: 12 / 16 / 2016
month day year

NEPA Compliance Officer: Jesse Garcia

Date: 12 / 28 / 2016
month day year

The following special condition is provided for the consideration of the Contracting Officer:

CX covers activities to include lab data analysis, computer modeling, planning and drilling one strat well (Mercer County) for data gathering. Appropriate required well permits must be obtained under this CX.

NETL F 451.1-1/1  
Revised: 11/24/2014  
Reviewed: 11/24/2014  
(Previous Editions Obsolete)

U.S. DEPARTMENT OF ENERGY - NETL

CATEGORICAL EXCLUSION (CX) DESIGNATION FORM

Project No.: DE-FE0029488 Recipient Name: UND EERC Project Location: Grand Forks, ND

Sub-recipient(s) and Locations:

Field sites in Oliver and Mercer Counties, ND

NETL Sponsoring Org.: FE/TDIC/Coal/Carbon Storage Team NETL Contact: William O'Dowd

Brief Title of Proposed Action: North Dakota Integrated Carbon Storage Complex Feasibility Study

Brief Description of Activities:

The recipient will characterize two sites in ND. The activities include drilling two strat wells (with coring, logging,...), and collect 2-D seismic line data.

THE PROPOSED ACTION FALLS WITHIN THE FOLLOWING CATEGORICAL EXCLUSION(S) FROM APPENDICES A AND B TO SUBPART D OF DOE NEPA IMPLEMENTING PROCEDURES (10 CFR 1021):

General Administration/Management

- A1 - Routine business actions
 A9 - Info gathering, analysis, documentation, dissemination, and training
 A11 - Technical advice and planning assistance

Facility Operations

- B1.3 - Routine maintenance and custodial services
 B1.7 - Communication system and data processing equipment acquisition, installation, operation, removal
 B1.15 - Support building or structure, non-waste storage, construction/operation

Safety and Health

- B2.1 - Modifications to enhance workplace habitability
 B2.2 - Installation/improvement of building/equipment instrumentation
 B2.3 - Installation of equipment for personnel safety and health

General Research

- B3.1 - Site characterization/environmental monitoring
 B3.6 - R&D or pilot facility construction/operation/decommissioning
 B3.7 - New infill exploratory, experimental oil/gas/geothermal well construction and/or operation
 B3.9 - Certain CCT demonstration activities, emissions unchanged
 B3.11 - Outdoor tests, experiments on materials and equipment components

Electrical Power and Transmission

- B4.4 - Power management activities (storage, load shaping, and balancing)
 B4.6 - Transmission support addition/modifications at developed facility site
 B4.11 - Construction of power substations and interconnection facilities
 B4.13 - Upgrading and rebuilding existing power lines (< 20 miles)

Conservation, Fossil, and Renewable Energy Activities

- B5.1 - Actions to conserve energy, no indoor air quality degradation
 B5.3 - Modification/abandonment of wells
 B5.5 - Short crude oil/gas/steam/geothermal/carbon dioxide pipeline const/oper within an existing right-of-way (< 20 miles) between existing facilities
 B5.13 - Experimental wells for injection of small quantities of carbon dioxide (< 500,000 tons)
 B5.15 - Small scale renewable energy research/development/pilot projects
 B5.22 - Alternative fuel vehicle fueling stations
 B5.23 - Electric vehicle charging stations

Other

- Specify category:
 Specify category:
 Specify category:

This action (1) would not present any extraordinary circumstances such that the action might have a significant impact upon the human environment; (2) is not connected to other actions with potentially significant impacts; (3) is not related to other actions with cumulatively significant impacts; and (4) is not inconsistent with 10 CFR 1021.211 - Interim Actions or 40 CFR 1506.1 - Limitations during the NEPA process.

SELECT ONE OF THE FOLLOWING:

- This Categorical Exclusion includes all tasks and phases in the Statement of Work or Statement of Project Objectives for this project.
 This Categorical Exclusion is only valid for the following tasks/phases Task 2.0 (2.1 and 2.4). The DOE initiator acknowledges the responsibility to obtain a NEPA determination prior to initiating any activities outside the scope of this Categorical Exclusion.

SELECT ONE OF THE FOLLOWING:

- This Categorical Exclusion includes all locations and activities for this project.
 Additional sites, sub-recipients, or activities cannot be identified at this time. The DOE initiator acknowledges the responsibility to obtain a NEPA determination prior to initiating any activities outside the scope of this Categorical Exclusion.

NOTE: ANY CHANGE(S) TO THE PROJECT SCOPE OR LOCATIONS MAY REQUIRE A NEW NEPA DETERMINATION.

DOE Initiator Signature: WILLIAM O'DOWD

Digitally signed by WILLIAM O'DOWD
Date: 2017.09.13 12:26:35 -0400

Date: 09 / 13 / 2017
month day year

NEPA Compliance Officer: Jesse Garcia

Digitally signed by Jesse Garcia
Date: 2017.09.21 11:26:29 -0700

Date: 09 / 21 / 2017
month day year

The following special condition is provided for the consideration of the Contracting Officer:

This supplemental CX is to cover activities at the Oliver and new Mercer County, ND well sites. Drill two stratigraphic wells-obtain core and logs and sampling. Acquire 2D seismic line data (Mercer Co. area)

NETL F 451.1-1/1  
Revised: 11/24/2014  
Reviewed: 11/24/2014  
(Previous Editions Obsolete)

U.S. DEPARTMENT OF ENERGY - NETL

CATEGORICAL EXCLUSION (CX) DESIGNATION FORM

Project No.: DE-FE0029488 Recipient Name: UND EERC Project Location: Oliver County, ND

Sub-recipient(s) and Locations:  
Minnkota Power Cooperative - Grand Forks, ND

NETL Sponsoring Org.: FE/TDIC/Coal/Carbon Storage Team NETL Contact: William O'Dowd

Brief Title of Proposed Action: North Dakota Integrated Carbon Storage Complex Feasibility Study

Brief Description of Activities:  
Conduct a seismic source evaluation to determine if traditional vibration trucks or dynamite is required for successful surface reflection survey in the area (reclaimed mine land).

THE PROPOSED ACTION FALLS WITHIN THE FOLLOWING CATEGORICAL EXCLUSION(S) FROM APPENDICES A AND B TO SUBPART D OF DOE NEPA IMPLEMENTING PROCEDURES (10 CFR 1021):

General Administration/Management

- A1 - Routine business actions
 A9 - Info gathering, analysis, documentation, dissemination, and training
 A11 - Technical advice and planning assistance

Facility Operations

- B1.3 - Routine maintenance and custodial services
 B1.7 - Communication system and data processing equipment acquisition, installation, operation, removal
 B1.15 - Support building or structure, non-waste storage, construction/operation

Safety and Health

- B2.1 - Modifications to enhance workplace habitability
 B2.2 - Installation/improvement of building/equipment instrumentation
 B2.3 - Installation of equipment for personnel safety and health

General Research

- B3.1 - Site characterization/environmental monitoring
 B3.6 - R&D or pilot facility construction/operation/decommissioning
 B3.7 - New infill exploratory, experimental oil/gas/geothermal well construction and/or operation
 B3.9 - Certain CCT demonstration activities, emissions unchanged
 B3.11 - Outdoor tests, experiments on materials and equipment components

Electrical Power and Transmission

- B4.4 - Power management activities (storage, load shaping, and balancing)
 B4.6 - Transmission support addition/modifications at developed facility site
 B4.11 - Construction of power substations and interconnection facilities
 B4.13 - Upgrading and rebuilding existing power lines (< 20 miles)

Conservation, Fossil, and Renewable Energy Activities

- B5.1 - Actions to conserve energy, no indoor air quality degradation
 B5.3 - Modification/abandonment of wells
 B5.5 - Short crude oil/gas/steam/geothermal/carbon dioxide pipeline const/oper within an existing right-of-way (< 20 miles) between existing facilities
 B5.13 - Experimental wells for injection of small quantities of carbon dioxide (< 500,000 tons)
 B5.15 - Small scale renewable energy research/development/pilot projects
 B5.22 - Alternative fuel vehicle fueling stations
 B5.23 - Electric vehicle charging stations

Other

- Specify category:
 Specify category:
 Specify category:

This action (1) would not present any extraordinary circumstances such that the action might have a significant impact upon the human environment; (2) is not connected to other actions with potentially significant impacts; (3) is not related to other actions with cumulatively significant impacts; and (4) is not inconsistent with 10 CFR 1021.211 - Interim Actions or 40 CFR 1506.1 - Limitations during the NEPA process.

SELECT ONE OF THE FOLLOWING:

- This Categorical Exclusion includes all tasks and phases in the Statement of Work or Statement of Project Objectives for this project.
 This Categorical Exclusion is only valid for the following tasks/phases supports Task 6.0. The DOE initiator acknowledges the responsibility to obtain a NEPA determination prior to initiating any activities outside the scope of this Categorical Exclusion.

SELECT ONE OF THE FOLLOWING:

- This Categorical Exclusion includes all locations and activities for this project.
 Additional sites, sub-recipients, or activities cannot be identified at this time. The DOE initiator acknowledges the responsibility to obtain a NEPA determination prior to initiating any activities outside the scope of this Categorical Exclusion.

NOTE: ANY CHANGE(S) TO THE PROJECT SCOPE OR LOCATIONS MAY REQUIRE A NEW NEPA DETERMINATION.

DOE Initiator Signature: William O'Dowd

Digitally signed by William O'Dowd
Date: 2019.07.12 10:22:28 -0400

Date: 7 / 12 / 2019
month day year

NEPA Compliance Officer: Jesse Garcia

Digitally signed by Jesse Garcia
Date: 2019.07.16 11:28:39 -0700

Date: 07 / 16 / 2019
month day year

The following special condition is provided for the consideration of the Contracting Officer:
CX covers activities to be conducted in the field to gather seismic data near an existing coal fired plant, gather core samples and conduct down hole wellbore geophysical testing. Appropriate permitting obtained; state and federal regulations will be adhered to regarding all project activities.

NETL F 451.1-1/1  
Revised: 11/24/2014  
Reviewed: 11/24/2014  
(Previous Editions Obsolete)

U.S. DEPARTMENT OF ENERGY - NETL

CATEGORICAL EXCLUSION (CX) DESIGNATION FORM

Project No.: DE-FE0031898 Recipient Name: EERC Project Location: Multiple

Sub-recipient(s) and Locations:

EERC has 4 offices (Grand Forks, ND; Oliver County, ND; Green Bay, WI; Pittsburgh, PA); and Minnkota Power Cooperative (Grand Forks, ND) is the industrial partner and will host the well sites and seismic survey.

NETL Sponsoring Org.: FE/TDIC/Coal/Carbon Storage Team NETL Contact: Joshua Hull

Brief Title of Proposed Action: Site Characterization Phase of Minnkota/Project Tundra CO2 Storage Complex

Brief Description of Activities:

EERC will assist Minnkota with site characterization through the installation of a deep characterization well and two associated water monitoring wells.

THE PROPOSED ACTION FALLS WITHIN THE FOLLOWING CATEGORICAL EXCLUSION(S) FROM APPENDICES A AND B TO SUBPART D OF DOE NEPA IMPLEMENTING PROCEDURES (10 CFR 1021):

General Administration/Management

- A1 - Routine business actions
A9 - Info gathering, analysis, documentation, dissemination, and training
A11 - Technical advice and planning assistance

Facility Operations

- B1.3 - Routine maintenance and custodial services
B1.7 - Communication system and data processing equipment acquisition, installation, operation, removal
B1.15 - Support building or structure, non-waste storage, construction/operation

Safety and Health

- B2.1 - Modifications to enhance workplace habitability
B2.2 - Installation/improvement of building/equipment instrumentation
B2.3 - Installation of equipment for personnel safety and health

General Research

- B3.1 - Site characterization/environmental monitoring
B3.6 - R&D or pilot facility construction/operation/decommissioning
B3.7 - New infill exploratory, experimental oil/gas/geothermal well construction and/or operation
B3.9 - Certain CCT demonstration activities, emissions unchanged
B3.11 - Outdoor tests, experiments on materials and equipment components

Electrical Power and Transmission

- B4.4 - Power management activities (storage, load shaping, and balancing)
B4.6 - Transmission support addition/modifications at developed facility site
B4.11 - Construction of power substations and interconnection facilities
B4.13 - Upgrading and rebuilding existing power lines (< 20 miles)

Conservation, Fossil, and Renewable Energy Activities

- B5.1 - Actions to conserve energy, no indoor air quality degradation
B5.3 - Modification/abandonment of wells
B5.5 - Short crude oil/gas/steam/geothermal/carbon dioxide pipeline const/oper within an existing right-of-way (< 20 miles) between existing facilities
B5.13 - Experimental wells for injection of small quantities of carbon dioxide (< 500,000 tons)
B5.15 - Small scale renewable energy research/development/pilot projects
B5.22 - Alternative fuel vehicle fueling stations
B5.23 - Electric vehicle charging stations

Other

- Specify category:
Specify category:
Specify category:

This action (1) would not present any extraordinary circumstances such that the action might have a significant impact upon the human environment; (2) is not connected to other actions with potentially significant impacts; (3) is not related to other actions with cumulatively significant impacts; and (4) is not inconsistent with 10 CFR 1021.211 - Interim Actions or 40 CFR 1506.1 - Limitations during the NEPA process.

SELECT ONE OF THE FOLLOWING:

- This Categorical Exclusion includes all tasks and phases in the Statement of Work or Statement of Project Objectives for this project.
This Categorical Exclusion is only valid for the following tasks/phases Tasks 1, 2, 4, 5, 6, 8. The DOE initiator acknowledges the responsibility to obtain a NEPA determination prior to initiating any activities outside the scope of this Categorical Exclusion.

SELECT ONE OF THE FOLLOWING:

- This Categorical Exclusion includes all locations and activities for this project.
Additional sites, sub-recipients, or activities cannot be identified at this time. The DOE initiator acknowledges the responsibility to obtain a NEPA determination prior to initiating any activities outside the scope of this Categorical Exclusion.

NOTE: ANY CHANGE(S) TO THE PROJECT SCOPE OR LOCATIONS MAY REQUIRE A NEW NEPA DETERMINATION.

DOE Initiator Signature: JOSHUA HULL

Digitally signed by JOSHUA HULL
Date: 2020.06.03 08:27:11 -0400

Date: 6 / 3 / 2020
month day year

NEPA Compliance Officer: JESSE GARCIA

Digitally signed by JESSE GARCIA
Date: 2020.06.09 13:43:59 -0700

Date: 06 / 09 / 2020
month day year

The following special condition is provided for the consideration of the Contracting Officer:

CX covers activities to be conducted within existing lab/office sites. Data compilation, analysis, computer modeling and simulation conducted under these tasks. Also, document preparation, and data dissemination and literature searches. Task 3 and Task 7 will require a separate NEPA review for the TBD sites.



NETL F 451.1-1/1  
 Revised: 11/24/2014  
 Reviewed: 11/24/2014  
 (Previous Editions Obsolete)

U.S. DEPARTMENT OF ENERGY - NETL

**CATEGORICAL EXCLUSION (CX) DESIGNATION FORM**

Project No.: DE-FE00031898 Recipient Name: EERC Project Location: Oliver County, ND

Sub-recipient(s) and Locations:  
Minnkota, Center, ND

NETL Sponsoring Org.: Carbon Storage NETL Contact: Joshua Hull

Brief Title of Proposed Action: Drill Stratigraphic Test Well, associated water well, and 120k tonCO2 injection

Brief Description of Activities:  
Drill Stratigraphic Test Well, associated water well, and 120k ton CO2 injection to test formation activity.

**THE PROPOSED ACTION FALLS WITHIN THE FOLLOWING CATEGORICAL EXCLUSION(S) FROM APPENDICES A AND B TO SUBPART D OF DOE NEPA IMPLEMENTING PROCEDURES (10 CFR 1021):**

General Administration/Management

- A1 – Routine business actions
- A9 – Info gathering, analysis, documentation, dissemination, and training
- A11 – Technical advice and planning assistance

Facility Operations

- B1.3 – Routine maintenance and custodial services
- B1.7 – Communication system and data processing equipment acquisition, installation, operation, removal
- B1.15 – Support building or structure, non-waste storage, construction/operation

Safety and Health

- B2.1 – Modifications to enhance workplace habitability
- B2.2 – Installation/improvement of building/equipment instrumentation
- B2.3 – Installation of equipment for personnel safety and health

General Research

- B3.1 – Site characterization/environmental monitoring
- B3.6 – R&D or pilot facility construction/operation/decommissioning
- B3.7 – New infill exploratory, experimental oil/gas/geothermal well construction and/or operation
- B3.9 – Certain CCT demonstration activities, emissions unchanged
- B3.11 – Outdoor tests, experiments on materials and equipment components

Electrical Power and Transmission

- B4.4 – Power management activities (storage, load shaping, and balancing)
- B4.6 – Transmission support addition/modifications at developed facility site
- B4.11 – Construction of power substations and interconnection facilities
- B4.13 – Upgrading and rebuilding existing power lines (< 20 miles)

Conservation, Fossil, and Renewable Energy Activities

- B5.1 – Actions to conserve energy, no indoor air quality degradation
- B5.3 – Modification/abandonment of wells
- B5.5 – Short crude oil/gas/steam/geothermal/carbon dioxide pipeline const/oper within an existing right-of-way (< 20 miles) between existing facilities
- B5.13 – Experimental wells for injection of small quantities of carbon dioxide (< 500,000 tons)
- B5.15 – Small scale renewable energy research/development/pilot projects
- B5.22 – Alternative fuel vehicle fueling stations
- B5.23 – Electric vehicle charging stations

Other

- Specify category:
- Specify category:
- Specify category:

This action (1) would not present any extraordinary circumstances such that the action might have a significant impact upon the human environment; (2) is not connected to other actions with potentially significant impacts; (3) is not related to other actions with cumulatively significant impacts; and (4) is not inconsistent with 10 CFR 1021.211 - Interim Actions or 40 CFR 1506.1 - Limitations during the NEPA process.

**SELECT ONE OF THE FOLLOWING:**

- This Categorical Exclusion includes all tasks and phases in the Statement of Work or Statement of Project Objectives for this project.
- This Categorical Exclusion is only valid for the following tasks/phases Subtask 3.1. The DOE initiator acknowledges the responsibility to obtain a NEPA determination prior to initiating any activities outside the scope of this Categorical Exclusion.

**SELECT ONE OF THE FOLLOWING:**

- This Categorical Exclusion includes all locations and activities for this project.
- Additional sites, sub-recipients, or activities cannot be identified at this time. The DOE initiator acknowledges the responsibility to obtain a NEPA determination prior to initiating any activities outside the scope of this Categorical Exclusion.

**NOTE: ANY CHANGE(S) TO THE PROJECT SCOPE OR LOCATIONS MAY REQUIRE A NEW NEPA DETERMINATION.**

DOE Initiator Signature: Joshua K. Hull Digitally signed by Joshua K. Hull  
Date: 2020.06.23 16:10:14 -0400

Date: 6 / 23 / 2020  
 month day year

NEPA Compliance Officer: JESSE GARCIA Digitally signed by JESSE GARCIA  
Date: 2020.06.24 10:25:06 -0700

Date: 06 / 24 / 2020  
 month day year

The following special condition is provided for the consideration of the Contracting Officer:

CX covers activities to be conducted at existing industrial site; Drilling a stratigraphic test well, collecting core and fluid samples, running wireline logs, installing downhole gauges and sensors, injection testing and drilling a water well.

NETL F 451.1-1/1  
Revised: 11/24/2014  
Reviewed: 11/24/2014  
(Previous Editions Obsolete)

U.S. DEPARTMENT OF ENERGY - NETL

CATEGORICAL EXCLUSION (CX) DESIGNATION FORM

Project No.: DE-FE00031889 Recipient Name: EERC Project Location: Oliver County, ND

Sub-recipient(s) and Locations:

Minnkota Power Cooperative - Center, ND

NETL Sponsoring Org.: FE/TDIC/Coal/Carbon Storage Team NETL Contact: Joshua Hull

Brief Title of Proposed Action: 2-D and 3-D Seismic, Controlled Source Electromagnetic Survey

Brief Description of Activities:

2-D and 3-D seismic surveys, controlled source electromagnetic survey, collect gravity and magnetic data.

THE PROPOSED ACTION FALLS WITHIN THE FOLLOWING CATEGORICAL EXCLUSION(S) FROM APPENDICES A AND B TO SUBPART D OF DOE NEPA IMPLEMENTING PROCEDURES (10 CFR 1021):

General Administration/Management

- A1 - Routine business actions
- A9 - Info gathering, analysis, documentation, dissemination, and training
- A11 - Technical advice and planning assistance

Facility Operations

- B1.3 - Routine maintenance and custodial services
- B1.7 - Communication system and data processing equipment acquisition, installation, operation, removal
- B1.15 - Support building or structure, non-waste storage, construction/operation

Safety and Health

- B2.1 - Modifications to enhance workplace habitability
- B2.2 - Installation/improvement of building/equipment instrumentation
- B2.3 - Installation of equipment for personnel safety and health

General Research

- B3.1 - Site characterization/environmental monitoring
- B3.6 - R&D or pilot facility construction/operation/decommissioning
- B3.7 - New infill exploratory, experimental oil/gas/geothermal well construction and/or operation
- B3.9 - Certain CCT demonstration activities, emissions unchanged
- B3.11 - Outdoor tests, experiments on materials and equipment components

Electrical Power and Transmission

- B4.4 - Power management activities (storage, load shaping, and balancing)
- B4.6 - Transmission support addition/modifications at developed facility site
- B4.11 - Construction of power substations and interconnection facilities
- B4.13 - Upgrading and rebuilding existing power lines (< 20 miles)

Conservation, Fossil, and Renewable Energy Activities

- B5.1 - Actions to conserve energy, no indoor air quality degradation
- B5.3 - Modification/abandonment of wells
- B5.5 - Short crude oil/gas/steam/geothermal/carbon dioxide pipeline const/oper within an existing right-of-way (< 20 miles) between existing facilities
- B5.13 - Experimental wells for injection of small quantities of carbon dioxide (< 500,000 tons)
- B5.15 - Small scale renewable energy research/development/pilot projects
- B5.22 - Alternative fuel vehicle fueling stations
- B5.23 - Electric vehicle charging stations

Other

- Specify category:
- Specify category:
- Specify category:

This action (1) would not present any extraordinary circumstances such that the action might have a significant impact upon the human environment; (2) is not connected to other actions with potentially significant impacts; (3) is not related to other actions with cumulatively significant impacts; and (4) is not inconsistent with 10 CFR 1021.211 - Interim Actions or 40 CFR 1506.1 - Limitations during the NEPA process.

SELECT ONE OF THE FOLLOWING:

- This Categorical Exclusion includes all tasks and phases in the Statement of Work or Statement of Project Objectives for this project.
- This Categorical Exclusion is only valid for the following tasks/phases Subtask 3.2. The DOE initiator acknowledges the responsibility to obtain a NEPA determination prior to initiating any activities outside the scope of this Categorical Exclusion.

SELECT ONE OF THE FOLLOWING:

- This Categorical Exclusion includes all locations and activities for this project.
- Additional sites, sub-recipients, or activities cannot be identified at this time. The DOE initiator acknowledges the responsibility to obtain a NEPA determination prior to initiating any activities outside the scope of this Categorical Exclusion.

NOTE: ANY CHANGE(S) TO THE PROJECT SCOPE OR LOCATIONS MAY REQUIRE A NEW NEPA DETERMINATION.

DOE Initiator Signature: Joshua K. Hull

Digitally signed by Joshua K. Hull  
Date: 2020.09.08 11:33:59 -0400

Date: 9 / 08 / 2020  
month day year

NEPA Compliance Officer: Mark Lusk

Digitally signed by Mark Lusk  
Date: 2020.09.14 14:32:26 -0400

Date: 9 / 14 / 2020  
month day year

The following special condition is provided for the consideration of the Contracting Officer:

If any archaeological, historical or other cultural resources are discovered while conducting field work or ground disturbing activities, work should cease immediately and the NETL federal project manager should be contacted as soon as possible to obtain additional guidance.

**APPENDIX C – AGENCY AND TRIBAL CORRESPONDENCE**



July 21, 2023

U.S. Fish and Wildlife Service  
NEPA Compliance Officer  
North Dakota Field Office  
3425 Miriam Avenue  
Bismarck, ND 58501-7926

Re: Consultation Under Section 7 Endangered Species Act for the “North Dakota CarbonSAFE: Project Tundra” in Oliver County, North Dakota

Dear Sir or Ma’am:

The U.S. Department of Energy (DOE) is preparing an Environmental Assessment (EA) for DOE’s proposed action of providing cost-sharing financial assistance to Minnkota Power Cooperative, Inc. (Minnkota) for the proposed North Dakota CarbonSAFE: Project Tundra. The EA is being prepared to fulfill DOE’s obligation under the National Environmental Policy Act (NEPA), as amended, the Council on Environmental Quality’s NEPA regulations, and DOE’s NEPA implementing procedures. The EA will evaluate the potential effects of construction and subsequent operation of the project. The purpose of this letter is to initiate consultation with the U.S. Fish and Wildlife Service (USFWS) North Dakota Field Office and to request information on any federally listed threatened, endangered, or candidate species, or critical habitat within the vicinity of the Project. The DOE’s Proposed Action is to provide cost-shared financial assistance to Minnkota. DOE proposes to provide approximately \$38.5 million of the Project’s \$77 million estimated total cost. Minnkota’s proposed project would include the design, construction, and operation of a carbon capture system at an existing lignite-fired coal power plant, the Milton R. Young (MRY) facility, in Oliver County, North Dakota. If built, Project Tundra would be the world’s largest post-combustion carbon dioxide (CO<sub>2</sub>) capture and geologic storage project, and would capture and permanently store CO<sub>2</sub> emissions from the existing MRY facility. The Project would be sized for capture and saline formation geologic storage of an average of 4.0 million metric tons per year (MMT/yr) of CO<sub>2</sub>. The CO<sub>2</sub> would be compressed, piped via a new approximately 0.5-mile-long CO<sub>2</sub> pipeline to the storage complex, and injected into deep geologic reservoirs. Construction would begin in 2024 and would be complete by 2028.

The Project would be constructed as a stand-alone facility with a footprint that falls within an area of 25.8 acres, west and south of the MRY (see **Figure 1**). Currently the area comprises equipment and materials storage, access roadways, and barren lands. The proposed Project would be located within the larger MRY associated industrial area that is bound by Nelson Lake to the north and east, coal production and plant waste disposal areas to the south, and agricultural and natural areas to the west.

The proposed Project site would be located in an area historically used for coal pile storage that has since been reclaimed. The area is undeveloped and provides minimal, low-quality wildlife habitat due to the disturbed and industrial nature of the area. The areas surrounding the Project site are generally low-quality wildlife habitat, including the adjacent landfill, coal mines, and industrial facilities. Nelson Lake abuts the existing MRY facility, but not the proposed Project area. Facility construction would include preparation of laydown and fabrication areas to be used for parking, construction trailers, material storage and fabrication, and other activities to support the influx of workers and project construction activities. **Figure 2** depicts 10 locations on Minnkota-

owned property being considered for use as temporary construction and laydown areas. Approximately 97.0 acres of land within these designated areas would be required during construction. Following construction, these areas would be restored to their original conditions, with the exception of an approximately 7.0-acre area previously used for plant operations that would be retained for overflow parking for MRY and project operations.

DOE reviewed the USFWS Information for Planning and Consultation (IPaC) system for the proposed Project area in Oliver County, which indicated five federally threatened or endangered species and one candidate species with the potential occur within the Project area based on known range and distribution. Table 1 summarizes these species, their habitat requirements, and their potential to occur in the Project area.

**Table 1: Federally Listed Species Potentially Occurring within the Project Area in Oliver County, North Dakota**

Common Name	Scientific Name	Status	Habitat	Potential for Occurrence
<b>Birds</b>				
Piping plover	<i>Charadrius melodus</i>	Threatened	Preferred habitat includes Alkali Lakes and Missouri River sandbars.	None - The Project site is an existing industrial site and does not provide suitable habitat.
Red knot	<i>Calidris cantus</i>	Threatened	Species may migrate through North Dakota in mid-May and mid-September to October. Breeding and nesting habitat is marine; migratory habitat in North Dakota may include the Missouri River system, sewage lagoons, and large permanent freshwater wetlands.	None - The Project site is an existing industrial site and does not provide suitable habitat.
Whooping crane	<i>Grus americana</i>	Endangered	May occur; migrates through North Dakota in April to mid-May and September to early November, found along wetlands and ponds.	Low – the Project site is an existing industrial site and is unlikely to provide stopover habitat for migrating cranes.
<b>Mammals</b>				
Northern Long-eared bat (NLEB)	<i>Myotis septentrionalis</i>	Endangered	Unlikely to occur; hibernates in caves and mine shafts during the winter months, and roosts in wooded areas during the summer months.	None – there are no roost trees available within the Project site, and no known hibernaculum in proximity to the site.
<b>Insects</b>				
Dakota skipper	<i>Hesperia dacotae</i>	Threatened	May occur; preferred habitat of mixed-grass prairies dominated by bluestem, purple coneflower, and needlegrasses may exist within Project area, and species has been documented in Oliver County.	None - The Project site is an existing industrial site and does not provide suitable habitat.
Monarch butterfly	<i>Danaus plexippus</i>	Candidate species	May occur; preferred habitat of prairies, meadows, grasslands, and right-of-way ditches along roadsides. Eggs laid on milkweed host plant (primarily <i>Asclepias</i> spp.).	The Project site is an existing industrial site and does not provide suitable habitat.
Source: USFWS IPaC 2023; North Dakota Game and Fish Department ( <a href="https://gf.nd.gov/wildlife/endangered">https://gf.nd.gov/wildlife/endangered</a> )				

The DOE has determined that the proposed Project would have *no effect* on the piping plover, red knot, NLEB, or Dakota skipper. The Project *may affect, but is not likely to adversely affect* the whooping crane. The Project will not jeopardize the continued existence of the monarch butterfly. The DOE understands that North Dakota does not have a state endangered or threatened species list; only those species listed under the ESA are considered threatened or endangered in North Dakota. Subsequently, no additional listed species were considered in this review, and coordination with the North Dakota Game and Fish Department for listed species did not occur.

DOE does not anticipate any adverse effects on federally listed threatened or endangered species based on the proposed construction and operation of the proposed Project Tundra. As part of the NEPA process, we are seeking your input on any environmental issues or concerns your agency may have on the Proposed Action and the potentially affected areas as described above. We respectfully ask that you provide any information or comments within 30 days to enable us to complete this phase of the Project within the scheduled timeframe.

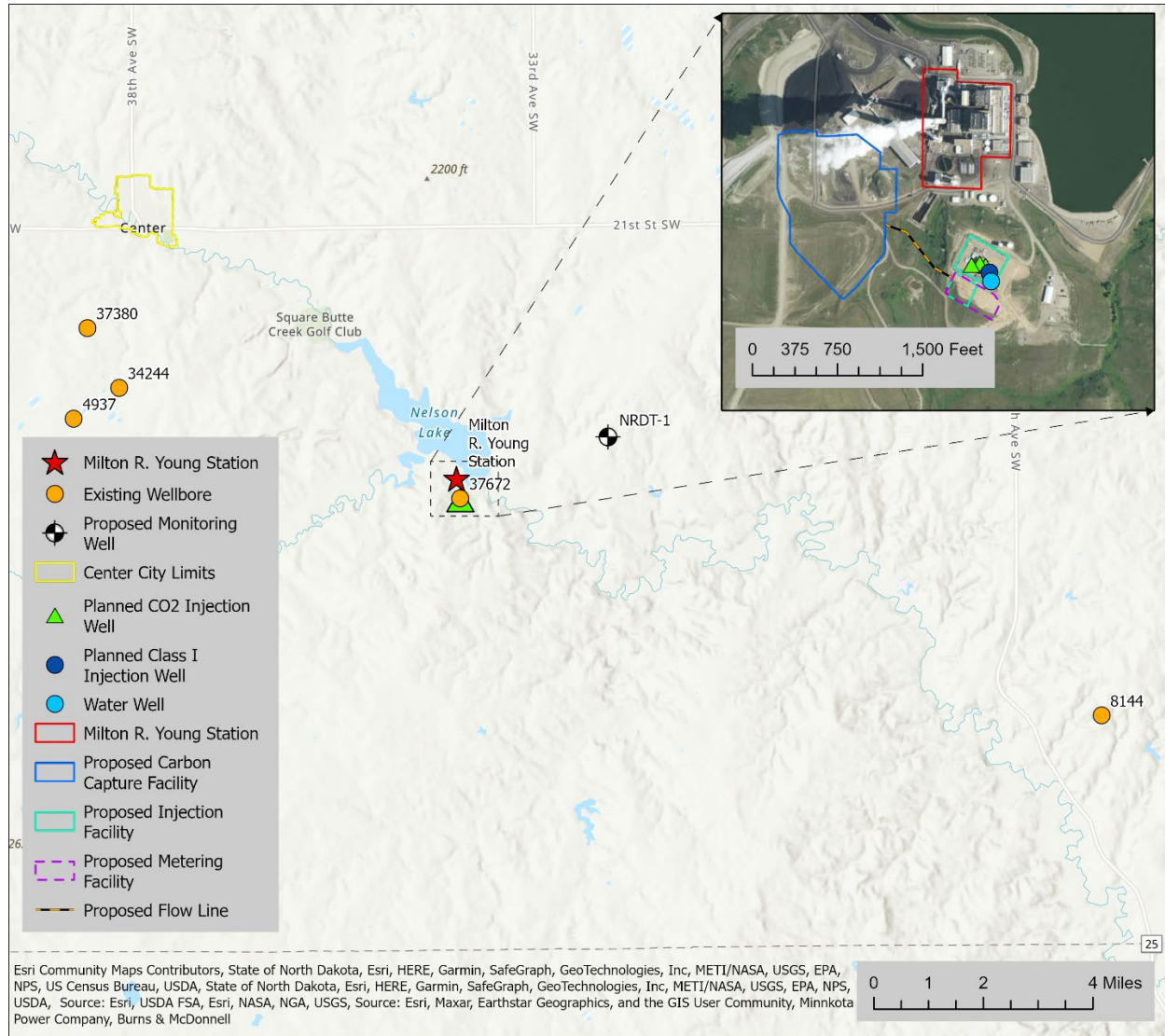
If you have any questions, please contact Ms. Pierina Fayish at:  
National Energy Technology Laboratory M/S:922-W13  
P.O. Box 10940  
Pittsburgh, PA 15236-0940  
Attention: Pierina Fayish  
[Pierina.Fayish@netl.doe.gov](mailto:Pierina.Fayish@netl.doe.gov)  
(412) 386-5428

Thank you for your assistance in this matter.

Sincerely,



Pierina N. Fayish



**Figure 1 – Proposed Project Location – MRY Vicinity Map**



# Construction and Laydown Areas

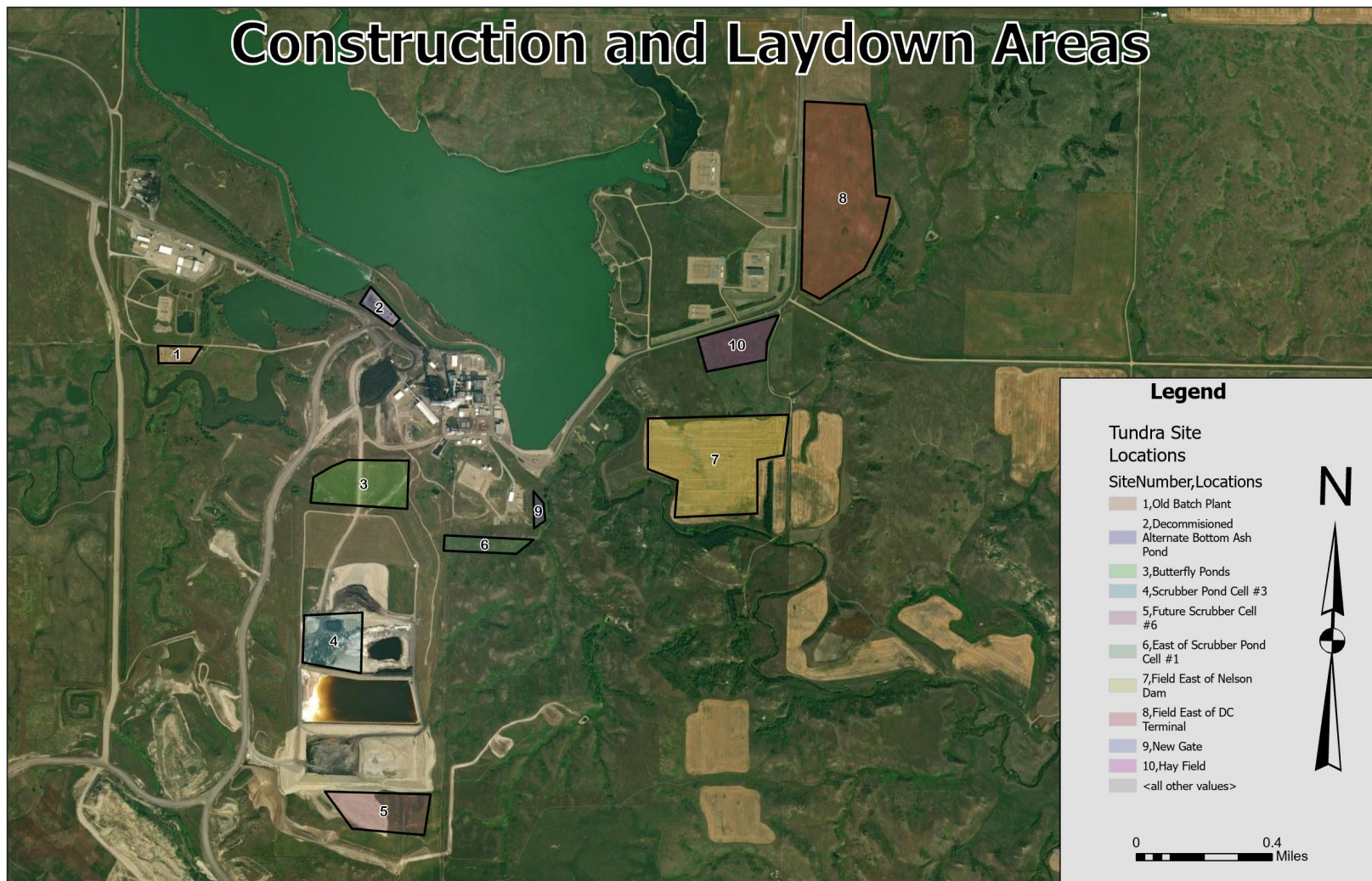


Figure 2 – Potential Construction and Laydown Areas

July 21, 2023

Archaeology and Historic Preservation Division  
State Historical Society of North Dakota  
612 East Boulevard Avenue  
Bismarck, ND 58505-0830

Re: Consultation Under NHPA Section 106 for a Project in Oliver County, North Dakota

Dear Sir or Madam:

The U.S. Department of Energy (DOE) is preparing an Environmental Assessment (EA) for DOE's proposed action of providing cost-sharing financial assistance to Minnkota Power Cooperative, Inc. (Minnkota) for the proposed North Dakota CarbonSAFE: Project Tundra. The EA is being prepared to fulfill DOE's obligation under the National Environmental Policy Act (NEPA), as amended, the Council on Environmental Quality's NEPA regulations, and DOE's NEPA implementing procedures. The EA will evaluate the potential effects of construction and subsequent operation of the project.

This undertaking and its effects are also being considered under Section 106 of the National Historic Preservation Act (NHPA) of 1966, as amended, and implementing regulations at Title 36 of the Code of Federal Regulations (CFR) Part 800. As part of compliance with Section 106, DOE is writing to seek your comments on any issues or concerns for traditional cultural properties, sacred sites, or sites of traditional religious or cultural importance in the area that might be affected by the proposed Project. We would also like to know if you wish to receive a copy of the Draft EA. We respectfully ask that you provide any information or comments within 30 days to enable us to complete this phase of the Project within the scheduled timeframe.

The DOE's proposed action is to provide cost-shared financial assistance to Minnkota. DOE proposes to provide approximately \$38.5 million of the Project's estimated \$77 million total cost.

Minnkota's proposed project would include the design, construction, and operation of a carbon capture system at an existing lignite-fired coal power plant, the Milton R. Young (MRY) facility, in Oliver County, North Dakota. If built, Project Tundra would be the world's largest post-combustion carbon dioxide (CO<sub>2</sub>) capture and geologic storage project, and would capture and permanently store CO<sub>2</sub> emissions from the existing MRY facility. The Project would be sized for capture and saline formation geologic storage of an average of 4.0 million metric tons per year (MMT/yr) of CO<sub>2</sub>. The CO<sub>2</sub> would be compressed, piped via a new approximately 0.5-mile CO<sub>2</sub> pipeline to the storage complex, and injected into deep geologic reservoirs. Construction would begin in 2024 and would be complete by 2028.

The Project would be constructed as a stand-alone facility with a footprint that falls within an area of 25.8 acres, west and south of the MRY (see **Figure 1**). Currently the area comprises equipment and materials storage, access roadways, and barren lands. The proposed Project would be located within the larger MRY associated industrial area that is bound by Nelson Lake to the north and east, coal production and plant waste disposal areas to the south, and agricultural and natural areas to the west.

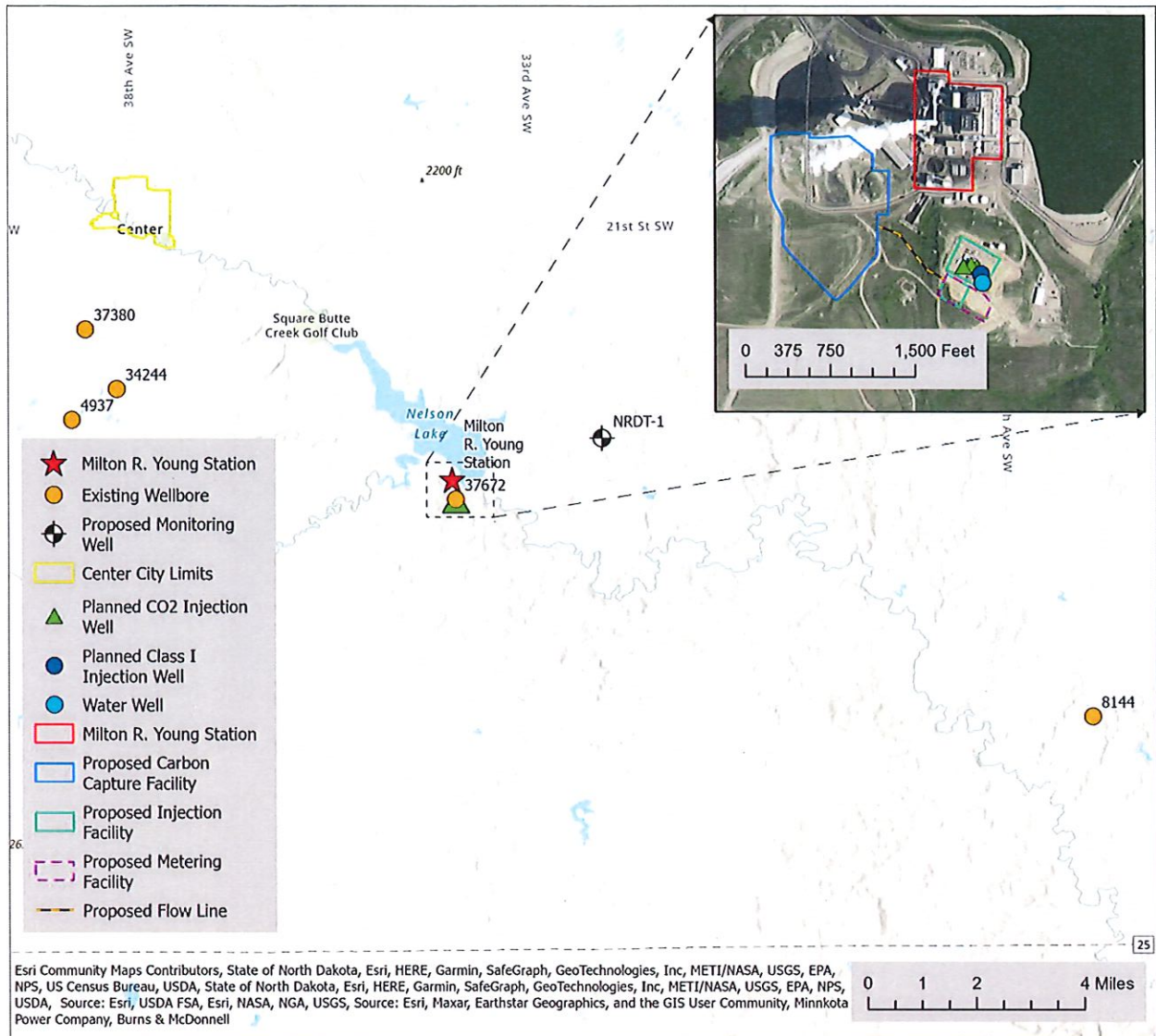


Figure 1 – Proposed Project Location – MRY Vicinity Map

The proposed Project site would be located in an area historically used for coal pile storage that has since been reclaimed. The area is undeveloped and provides minimal, low-quality wildlife habitat due to the disturbed and industrial nature of the area. The areas surrounding the Project site are generally low-quality wildlife habitat, including the adjacent landfill, coal mines, and industrial facilities. Nelson Lake abuts the existing MRY facility, but not the proposed Project area (see **Figures 2 and 3**).



**Figure 2 – Proposed Project Site – Ground-level View of Carbon Capture Facility Location**

The CO<sub>2</sub> flowline will transport the CO<sub>2</sub> from the facility to the injection site. The injection site includes up to three Class VI injection wells referred to as McCall 1, Liberty 1, and Unity 1. The injection site also includes a proposed Class I underground injection well (UIC) and an underground source of drinking water (USDW) monitoring well (see **Figure 3**).



**Figure 3 – Proposed Project Site – Ground-level View of Proposed Injection Well Location**

The Project would extract steam from the Unit 1 and Unit 2 steam turbines, a necessary component for use in the absorption process. The project would be designed to capture up to 13,000 short tons per day of CO<sub>2</sub>. During operations, flue gas required to achieve this CO<sub>2</sub> capture rate would require all the flue gas from one unit and a portion of flue gas from the other unit for maximum operation. Various operating scenarios are available and planned to utilize various combinations of flue gas from both units (see Figure 4).

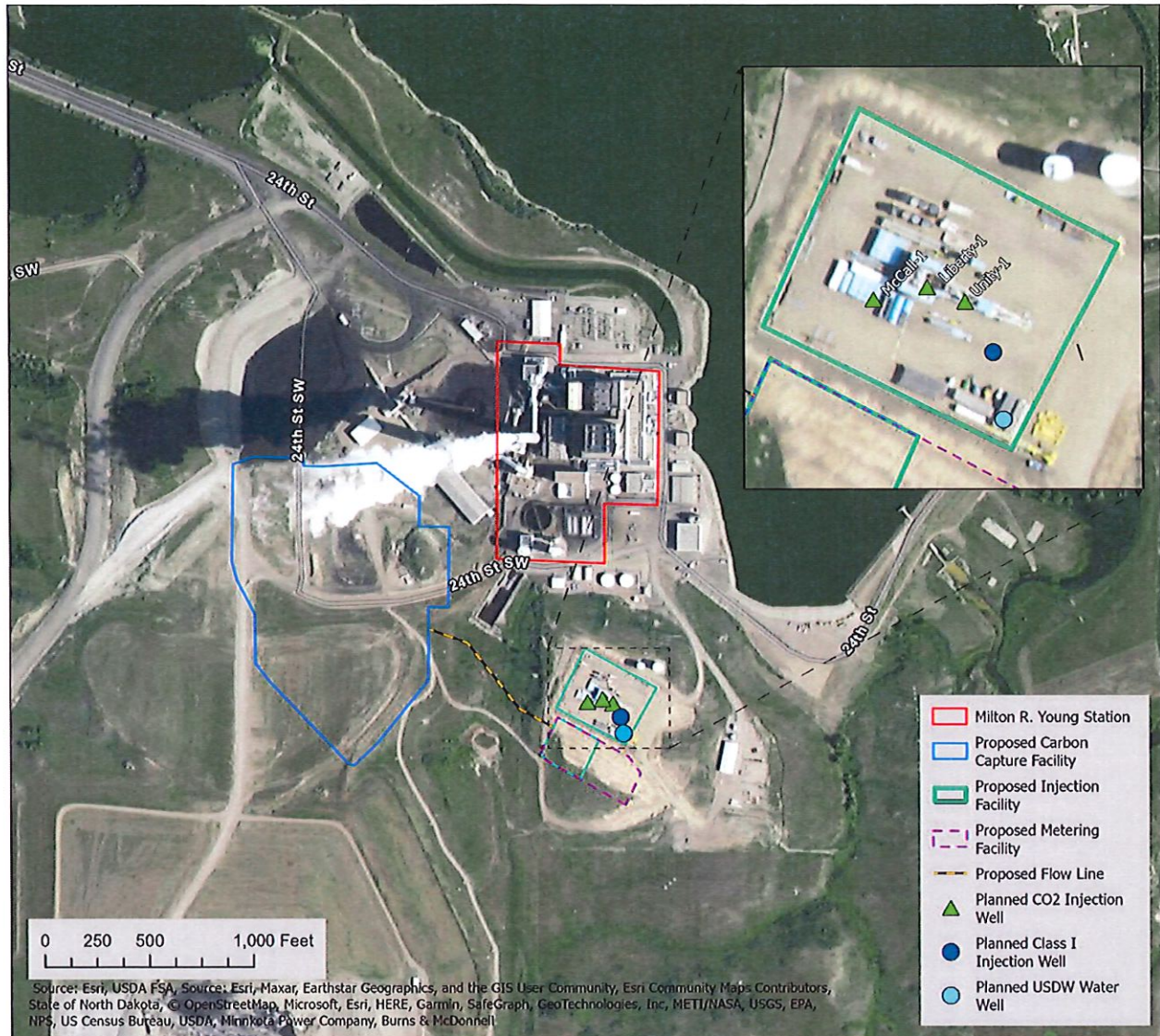


Figure 4 – Proposed Project Plan – Facility Adjacent to MRYS Unit No. 1 & Unit No. 2

The Project would use Mitsubishi Heavy Industries’ (MHI) Kansas Mitsubishi Carbon Dioxide Recovery (KM CDR) amine-based post-combustion carbon capture technology, which uses an amine-based solvent to capture CO<sub>2</sub>. The steam produced from MRYS’s coal-fired boilers (Unit 1 and Unit 2) would be used to regenerate the amine. The flue gas would be processed by and vented through the facility. The stripped CO<sub>2</sub> vapor would then be compressed, purified (dried), and transported by the CO<sub>2</sub> flowline to the injection site for permanent geologic storage. Figure 5 diagrams the carbon capture plant process.

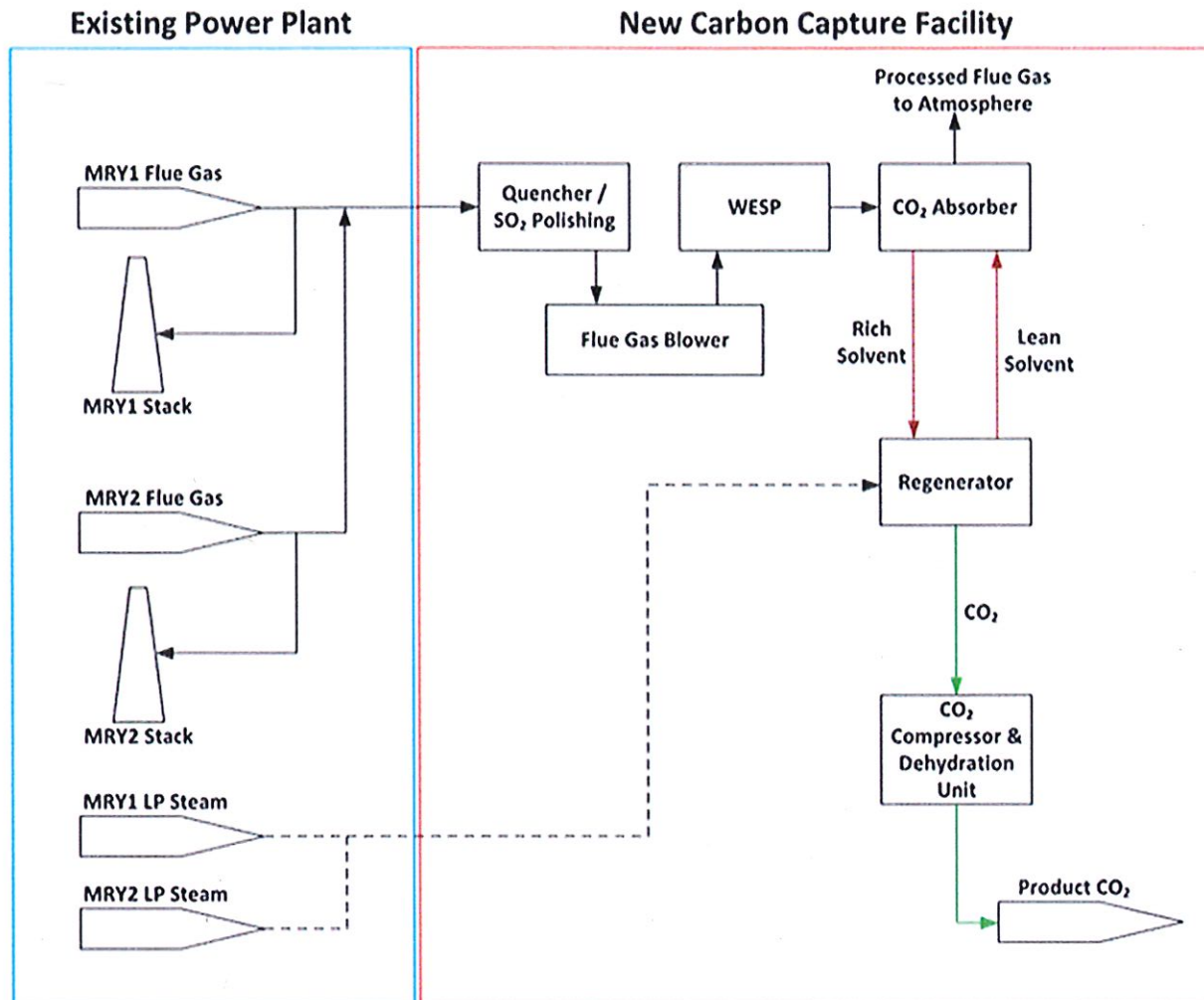


Figure 5 – Carbon Capture Plant Process

A small number of sites, primarily lithic scatters, have been recorded within the footprint of the MRY at Nelson Lake. No significant known cultural resources sites are present on the MRY in the area for the proposed project facilities. No National Register of Historic Places-listed historic resources are located in the proposed project site or surrounding region. Even if previously present, the development of this area over the years has likely compromised the integrity of any cultural and/or paleontological sites and they are probably no longer viable for information.

A Phase I survey was conducted in April 2022, which included the proposed Project location. This report was provided to the North Dakota State Historical Society, State Historic Preservation Office (SHPO) (SHPO Ref. 21-0571) and, on June 27, 2021, Minnkota received a letter of from SHPO providing concurrence with a determination of ‘No Historical Properties Affected’.

Facility construction would include preparation of laydown and fabrication areas. **Figure 6** depicts 10 locations on Minnkota-owned property being considered for use as temporary construction and laydown areas. These areas would serve various construction needs including parking, construction trailers, material storage and fabrication, and other activities to support the influx of workers and project construction activities.



Figure 6 – Potential Construction and Laydown Areas

The temporary construction and laydown areas will be evaluated for architectural and cultural significance pursuant to Section 106 of the National Historic Preservation Act. Class I cultural resource surveys will be completed, and the cultural reports provided to SHPO for review and concurrence. Additional field surveys may also be required as a result of the Class I survey. All surveys will be completed in accordance with the North Dakota SHPO Guidelines Manual for Cultural Resource Inventory Projects. If cultural resources are identified in any of the proposed temporary construction and laydown areas, the sites will be avoided or mitigated in consultation with SHPO.

If you have any questions, please contact Ms. Pierina Fayish at:

National Energy Technology Laboratory M/S:922-W13  
P.O. Box 10940  
Pittsburgh, PA 15236-0940  
Attention: Pierina Fayish  
[Pierina.Fayish@netl.doe.gov](mailto:Pierina.Fayish@netl.doe.gov)  
(412) 386-5428

Thank you for your assistance in this matter.

Sincerely,

Pierina N. Fayish

March 26, 2024

Margaret Patton  
North Dakota State Historic Preservation Office  
State Historical Society of North Dakota  
612 East Boulevard Ave.  
Bismarck, North Dakota 58505

**Project Name: North Dakota Carbon SAFE: Project Tundra - Milton Young Transmission Line Reroute**

**Subject: Completion of Section 106 Cultural Resource Survey Report; Request for Concurrence (NDSHPO Ref. No.: 23-0244)**

Dear Ms. Patton,

In accordance with Section 106 of the National Historic Preservation Act, the U.S. Department of Energy (DOE), as the lead federal agency for the proposed North Dakota Carbon SAFE: Project Tundra (Project), is following up initial consultation for the Project. After original Project Class III inventories were completed, it was determined that sections of the Milton Young Transmission Line would require reroute to remove existing portions of the line from the Project footprint. These areas, considered the proposed Area of Potential Effects (APE), total approximately 3.2 miles of rerouted line.

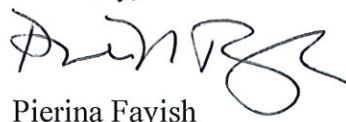
In accordance with Title 36 Code of Federal Regulations Part 800.4, a qualified cultural resources contractor, Juniper, LLC. (Juniper), completed a Class I: Literature Review and a Class III: Intensive Cultural Resource Inventory to identify historic properties within the proposed APE and documented the results of these efforts in a cultural resources survey report. The survey was completed between August 23, 2023, and August 24, 2023.

The literature review revealed 75 previously recorded cultural resources and 16 previous cultural inventories within a one-mile Study Area of the proposed APE. None of these previous resources were located within the potential APE. During the Class III: Intensive Cultural Resource Inventory, Juniper identified one new cultural resource (32OLX505). This isolated find is detailed in the attached *Milton Young Transmission Line Reroute: A Class III Cultural Resource Inventory in Oliver County, North Dakota* report. Juniper is recommending the new isolated find, 32OLX505, as not eligible for the National Register of Historic Places.

Therefore, based on Juniper's assessment, DOE has determined that the Project will result in *No Historic Properties Affected*. We respectfully request that you provide concurrence or comments within 30 days.

If you have questions, please contact me at (412) 386-5428 or [Pierina.Fayish@netl.doe.gov](mailto:Pierina.Fayish@netl.doe.gov).

Sincerely,



Pierina Fayish



March 26, 2024

Margaret Patton  
North Dakota State Historic Preservation Office  
State Historical Society of North Dakota  
612 East Boulevard Ave.  
Bismarck, North Dakota 58505

**Project Name: North Dakota Carbon SAFE: Project Tundra - Extra Workspaces**

**Subject: Completion of Section 106 Cultural Resource Survey Report; Request for Concurrence (NDSHPO Ref. No.: 23-0244)**

Dear Ms. Patton,

The U.S. Department of Energy (DOE), as the lead federal agency for the proposed North Dakota Carbon SAFE: Project Tundra (Project), is following up on our July 21, 2023, letter for Section 106 consultation. After initial Project Class III inventories were completed, it was determined that further laydown areas, fabrication areas, and an access route would be required to support Project construction. A total of 11 locations and one access route on Minnkota-owned property were considered for use as temporary construction and laydown areas. These areas, considered the potential Area of Potential Effects (APE), are labeled as “Block 1-11” and “Road” within the attached Class III resource report. They will serve various construction needs for the Project including parking, housing construction trailers, material storage and fabrication activities, as well as other activities to support the influx of workers and project construction activities.

In accordance with Title 36 Code of Federal Regulations Part 800.4, a qualified cultural resources contractor, Juniper, LLC. (Juniper), completed a Class I: Literature Review and a Class III: Intensive Cultural Resource Inventory to identify historic properties within these potential APE and documented the results of these efforts in a cultural resources survey report. The survey was completed between August 21, 2023, and August 28, 2023.

The literature review revealed 126 previously recorded cultural resources and 33 previous cultural inventories within a one-mile Study Area of the potential APE. Four of these resources lie directly within the potential APE (32OLX441, 32OLX442, 32OLX505, and 32OL127). Isolated finds 32OLX441 and 32OLX442 were not relocated during pedestrian survey of the potential APE, while 32OLX505, also an isolated find, was recently documented during a previous survey for the Project and did not require re-documentation. Site 32OL127 was noted as destroyed in 1968 by mining operations.

All the previously documented resources within the potential APE have formerly been recommended not eligible for the National Register of Historic Places (NRHP). Due to an abundance of caution, despite these previous recommendations, and owing to the location of isolates 32OLX441 and 32OLX442 less than 60 meters and on the same landform as two previous stone effigy sites (32OL960 and 32OL961), Block 11 has been dropped from the potential APE.

During the Class III: Intensive Cultural Resource Inventory, Juniper identified three new cultural resources (32OLX503, 32OLX504, and 32OL1008). These resources are detailed in the attached *Tundra Project Extra Workspaces: A Class III Cultural Resource Inventory in Oliver County, North Dakota* report. Juniper is recommending the isolated finds, 32OLX503 and 32OLX504, as not eligible for the NRHP, while site 32OL1008, a lithic scatter, is recommended unevaluated for the NRHP. Juniper recommends avoidance of the site with a 50-foot avoidance buffer. Although site 32OL1008 is located in the potential APE, the Project will implement the recommended avoidance buffer and the site will not be impacted by the Project.

Based on Juniper's assessment, DOE has determined that the Project will result in *No Historic Properties Affected*. We respectfully request that you provide concurrence or comments within 30 days.

If you have questions, please contact me at (412) 386-5428 or [Pierina.Fayish@netl.doe.gov](mailto:Pierina.Fayish@netl.doe.gov).

Sincerely,



Pierina Fayish



April 22, 2024

Pierina Fayish  
National Energy Technology Laboratory  
626 Corchrans Mill Road, PO. Box 10940  
Pittsburgh, PA 15236

**ND SHPO Ref: 24-0139 Milton Young Transmission Line Reroute Minnkota Power Cooperative in portions of [T141N R83W Sections 4, 5, and 8] Oliver County, North Dakota**

Dear Pierina,

We reviewed the report for the ND SHPO Ref: 24-0139 titled "Milton Young Transmission Line Reroute: A Class III Cultural Resource Inventory in Oliver County, North Dakota" from Juniper Environmental Consulting by Andrea Kulevsky and John Morrison and we require additional information to complete our review. Please address the following comments and resubmit the report and we will be happy to review the report again:

1. Please add the date of the file search.
2. Please correct the site definition on page 9, as 6 or more artifacts are considered a site (ND SHPO Guidelines page 19).
3. Please justify why no shovel probes were placed at 32OLX505 as work at nearby sites noted similar stratigraphy of a thin soil over subsoil, with cultural materials between 10-15 cm below surface at the interface between sandy clay and a clay layers.

Thank you for the opportunity to review this project and we look forward to receiving an updated version of the report. If you have any questions, please contact Margie Patton, Research Archaeologist at 701-328-3576 or [mmpatton@nd.gov](mailto:mmpatton@nd.gov).

Sincerely,

for William D. Peterson, PhD  
State Historic Preservation Officer  
(North Dakota)

24-0139



April 22, 2024

Pierina Fayish  
National Energy Technology Laboratory  
626 Corchrans Mill Road, PO. Box 10940  
Pittsburgh, PA 15236

**ND SHPO Ref: 24-0195 Tundra Additional Workspaces in portions of [T141N R83W Sections 4, 5, 8, 32, 33, and 34] Oliver County, North Dakota**

Dear Pierina,

We reviewed the report for the ND SHPO Ref: 24-0195 titled “Tundra Project Extra Workspaces: A Class III Cultural Resource Inventory in Oliver County, North Dakota” from Juniper Environmental Consulting by Andrea Kulevsky and John Morrison and we require additional information to complete our review. Please address the following comments and resubmit the report and we will be happy to review the report again:

1. Please update the shapefile to only include areas with Class III survey coverage and remove areas that were not surveyed.
2. Please correct the site definition on page 9, as 6 or more artifacts are considered a site (ND SHPO Guidelines page 19).
3. Please add the date of the file search.
4. Please correct the site boundaries (particularly for site 32OLX123) on Figures 14-16 and Figures 21-28, as they do not match the boundaries shown in the file search (Figures 29-30). Also, there are sites on the maps with duplicate site numbers.
5. For sites 32OLX505, 32OLX503, and 32OLX504, please justify why no shovel probes were done, especially when sites in the area with similar thin soils over subsoils noted cultural materials at the interface between the topsoil and subsoil. For 32OL1008, please describe which aspects of integrity the site retains, and the possibility of an association (or not) between 32OL1008 and 32OLX504.

24-0195



Thank you for the opportunity to review this project and we look forward to receiving an updated version of the report. If you have any questions, please contact Margie Patton, Research Archaeologist at 701-328-3576 or [mmpatton@nd.gov](mailto:mmpatton@nd.gov).

Sincerely,

for William D. Peterson, PhD  
State Historic Preservation Officer  
(North Dakota)

24-0195



May 31, 2024

Pierina Fayish  
National Energy Technology Laboratory  
626 Corchrans Mill Road, PO. Box 10940  
Pittsburgh, PA 15236

**ND SHPO Ref: 24-0139 Milton Young Transmission Line Reroute Minnkota Power Cooperative in portions of [T141N R83W Sections 4, 5, and 8] Oliver County, North Dakota**

Dear Pierina,

We reviewed the report for 24-0139 titled "Milton Young Transmission Line Reroute: A Class III Cultural Resource Inventory in Oliver County, North Dakota" from Juniper Environmental Consulting by Andrea Kulevsky and John Morrison. We find the report acceptable and will add it to our manuscript collection.

We concur with a determination of "No Historic Properties Affected" for the project provided the project takes place as described in the documentation and all borrow comes from an approved source.

Thank you for the opportunity to review this project. For future correspondence regarding this project, please include the ND SHPO Reference number indicated in this letter. If you have any questions, please contact Margie Patton, Research Archaeologist at 701-328-3576 or [mmpatton@nd.gov](mailto:mmpatton@nd.gov).

Sincerely,

for William D. Peterson, PhD  
State Historic Preservation Officer  
(North Dakota)

24-0139



June 28, 2024

Pierina Fayish  
National Energy Technology Laboratory  
626 Corchrans Mill Road, PO. Box 10940  
Pittsburgh, PA 15236

**ND SHPO Ref: 23-0255 [Formerly 24-0195] Tundra Project Extra Workspaces as part of (Tundra) ND CarbonSAFE: Project Tundra in portions of [T141N R83W Sections 4, 5, and 8 and T142N R83W Sections 32, 33, and 34] Oliver County, North Dakota**

Dear Pierina,

We reviewed the report for 23-0255 [Formerly 24-0195] titled "Tundra Project Extra Workspaces: A Class III Cultural Resource Inventory in Oliver County, North Dakota" from Juniper Environmental Consulting by Andrea Kulevsky and John Morrison. We find the report acceptable and will add it to our manuscript collection.

We concur with a determination of "No Historic Properties Affected" for the project provided 32OL960, 32OL961, 32OLX441, 32OLX442, and 32OL1008 are avoided as described in the consultation letter dated March 26, 2024 and provided the project takes place as described in the documentation.

Thank you for the opportunity to review this project. For future correspondence regarding this project, please include the ND SHPO Reference number indicated in this letter. If you have any questions, please contact Margie Patton, Research Archaeologist at 701-328-3576 or [mmpatton@nd.gov](mailto:mmpatton@nd.gov).

Sincerely,

for William D. Peterson, PhD  
State Historic Preservation Officer  
(North Dakota)

23-0255

July 21, 2023

Apache Tribe of Oklahoma  
Durell Cooper, Chairman  
P.O. Box 1330  
Anadarko, OK 73005

Re: Consultation Under National Historic Preservation Act Section 106 for the North Dakota CarbonSAFE: Project Tundra in Oliver County, North Dakota

Dear Chairman Cooper:

The U.S. Department of Energy (DOE) is preparing an Environmental Assessment (EA) for DOE's proposed action of providing cost-sharing financial assistance to Minnkota Power Cooperative, Inc. (Minnkota) for the proposed North Dakota CarbonSAFE: Project Tundra. The EA is being prepared to fulfill DOE's obligation under the National Environmental Policy Act (NEPA), as amended, the Council on Environmental Quality's NEPA regulations, and DOE's NEPA implementing procedures. The EA will evaluate the potential effects of construction and subsequent operation of the facility.

This undertaking and its effects are also being considered under Section 106 of the National Historic Preservation Act (NHPA) of 1966, as amended, and the implementing regulations at Title 36 of the Code of Federal Regulations (CFR) Part 800. As part of compliance with Section 106, DOE is writing to seek your comments on any issues or concerns for traditional cultural properties, sacred sites, or sites of traditional religious or cultural importance in the area that might be affected by the proposed Project. We would also like to know if you wish to receive a copy of the Draft EA. We respectfully ask that you provide any information or comments within 30 days to enable us to complete this phase of the project within the scheduled timeframe.

The DOE's proposed action is to provide cost-shared financial assistance to Minnkota. DOE proposes to provide approximately \$38.5 million of the Project's \$77 million estimated total cost.

The Project would be constructed as a stand-alone facility with a footprint that falls within an area of 25.8 acres, west and south of the MRY (see **Figure 1**). Currently the area comprises equipment and materials storage, access roadways, and barren lands. The proposed Project would be located within the larger MRY associated industrial area that is bound by Nelson Lake to the north and east, coal production and plant waste disposal areas to the south, and agricultural and natural areas to the west.

The proposed Project site would be located in an area historically used for coal pile storage that has since been reclaimed. The area is undeveloped and provides minimal, low-quality wildlife habitat due to the disturbed and industrial nature of the area. The areas surrounding the Project site are generally low-quality wildlife habitat, including the adjacent landfill,



coal mines, and industrial facilities. Nelson Lake abuts the existing MRY facility, but not the proposed Project area.

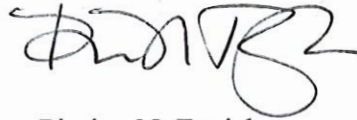
Facility construction would include preparation of laydown and fabrication areas to be used for parking, construction trailers, material storage and fabrication, and other activities to support the influx of workers and project construction activities. **Figure 2** depicts 10 locations on Minnkota-owned property being considered for use as temporary construction and laydown areas. Approximately 97.0 acres of land within these designated areas would be required during construction. Following construction, these areas would be restored to their original conditions, with the exception of an approximately 7.0-acre area previously used for plant operations that would be retained for overflow parking for MRY and project operations.

If you have any questions, please contact Ms. Pierina Fayish at:

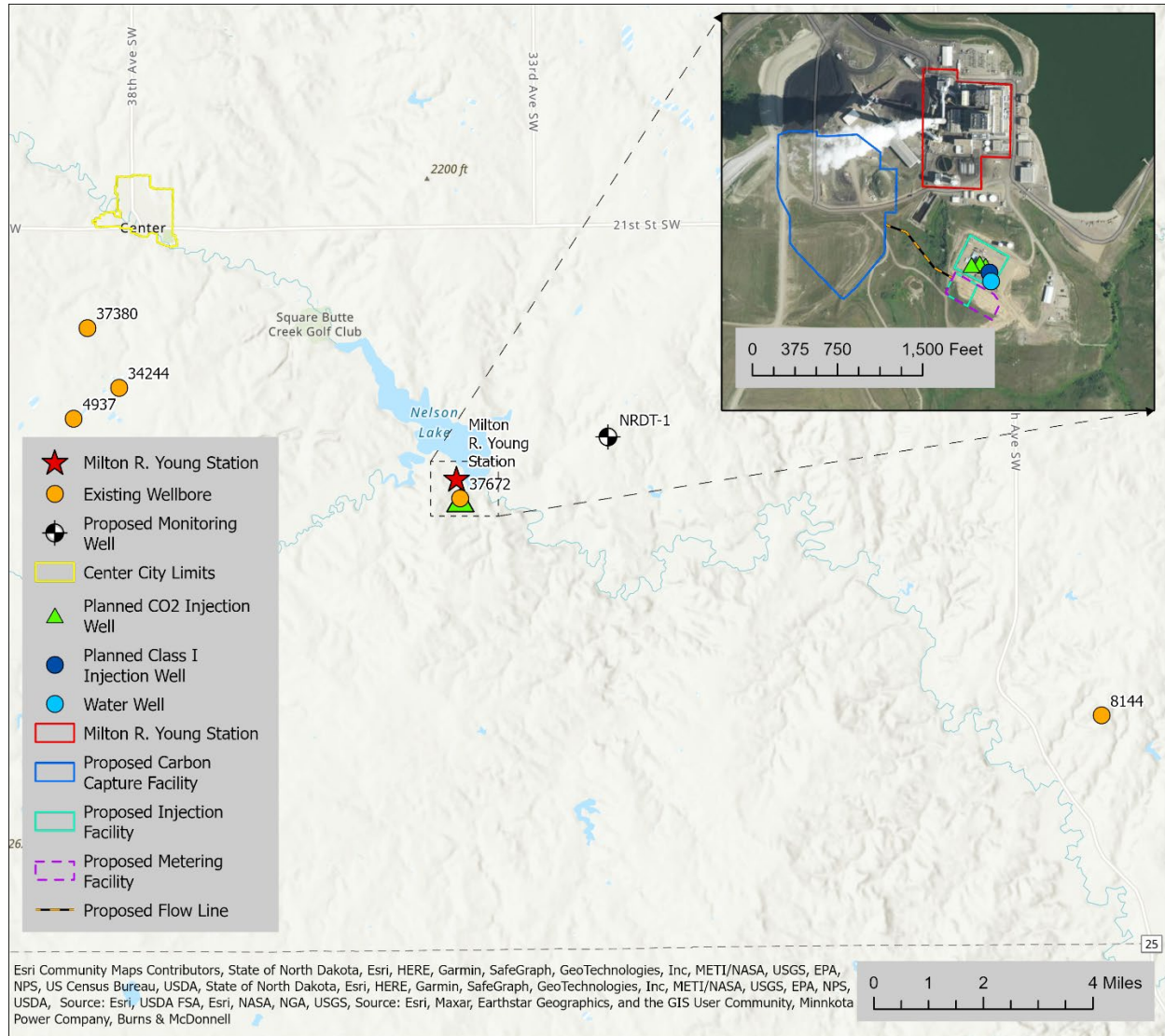
National Energy Technology Laboratory M/S:922-W13  
P.O. Box 10940  
Pittsburgh, PA 15236-0940  
Attention: Pierina Fayish  
[Pierina.Fayish@netl.doe.gov](mailto:Pierina.Fayish@netl.doe.gov)  
(412) 386-5428

Thank you for your assistance in this matter.

Sincerely,



Pierina N. Fayish



**Figure 1 – Proposed Project Location – MRY Vicinity Map**

# Construction and Laydown Areas

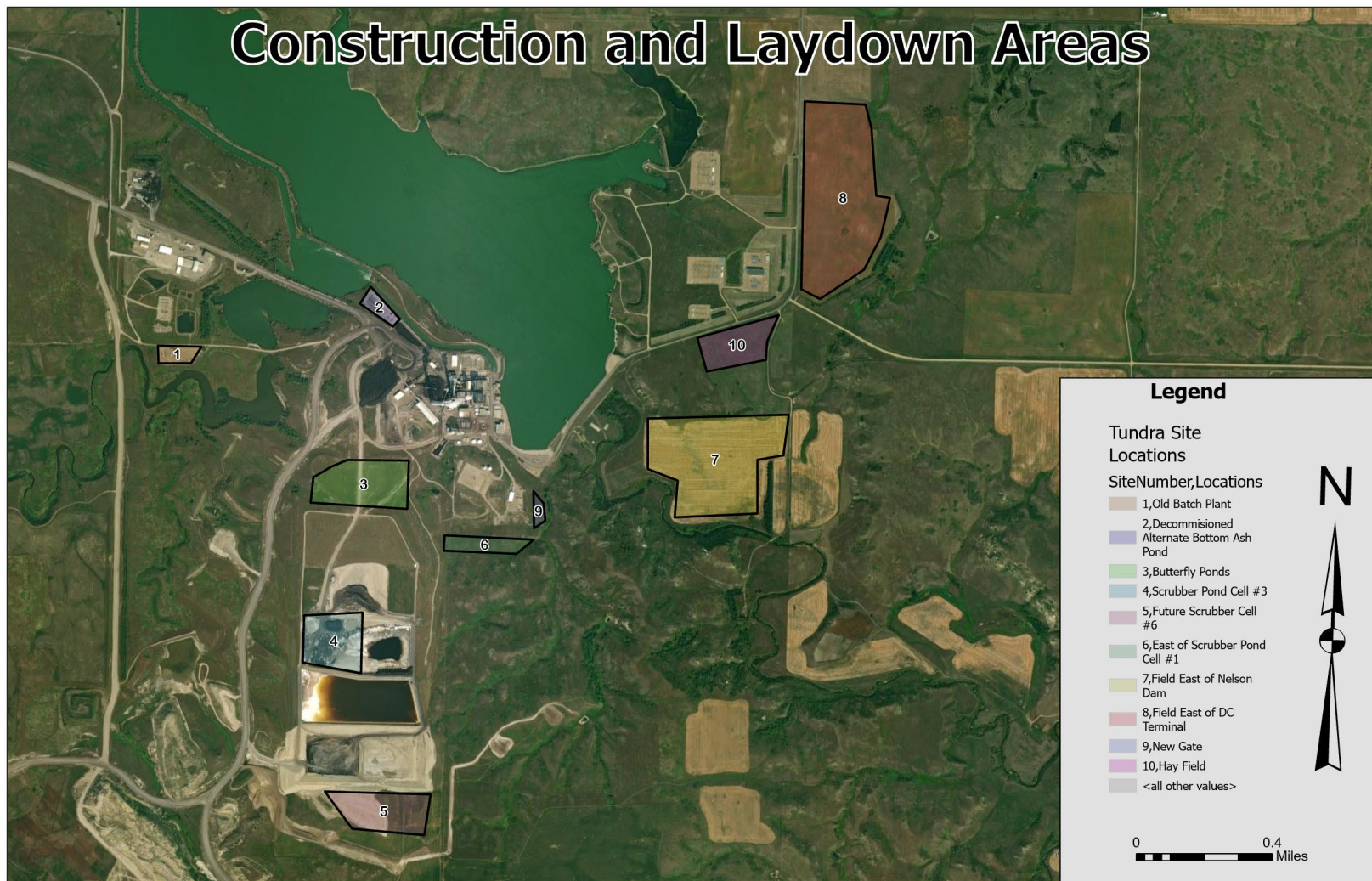


Figure 2 – Potential Construction and Laydown Areas

### **Distribution List for Tribal Consultation Letter**

#### **Tribes**

Durell Cooper, Chairman  
Apache Tribe of Oklahoma  
P. O. Box 1330 Anadarko, OK 73005

Bobby Komardley, Chairman  
Apache Tribe of Oklahoma  
P. O. Box 1330 Anadarko, OK 73005

Jeffery Stiffarm, President  
Fort Belknap Indian Community of the Fort Belknap  
Reservation of Montana  
RR 1, Box 66  
Harlem, MT 59526

Michael Blackwolf, THPO  
Fort Belknap Indian Community of the Fort Belknap  
Reservation of Montana  
RR 1, Box 66  
Harlem, MT 59526

Allan Demaray, Director and THPO  
Three Affiliated Tribes of the Fort Berthold Reservation,  
North Dakota  
404 Frontage Road  
New Town, ND 58763

Mark Fox, Chairperson  
Three Affiliated Tribes of the Fort Berthold  
Reservation, North Dakota  
404 Frontage Road  
New Town, ND 58763

April 12, 2024

Chairperson Mark Fox  
Three Affiliated Tribes of the Fort Berthold Reservation, North Dakota  
404 Frontage Road  
New Town, ND 58763

Re: Consultation Under National Historic Preservation Act Section 106 for the North Dakota CarbonSAFE: Project Tundra in Oliver County, North Dakota

Dear Chairperson Fox,

The U.S. Department of Energy (DOE) is preparing an Environmental Assessment (EA) for DOE's proposed action of providing cost-sharing financial assistance to Minnkota Power Cooperative, Inc. (Minnkota) for the proposed North Dakota CarbonSAFE: Project Tundra. The EA is being prepared to fulfill DOE's obligation under the National Environmental Policy Act (NEPA), as amended, the Council on Environmental Quality's NEPA regulations, and DOE's NEPA implementing procedures. The EA will evaluate the potential effects of construction and subsequent operation of the facility.

This undertaking and its effects are also being considered under Section 106 of the National Historic Preservation Act (NHPA) of 1966, as amended, and the implementing regulations at Title 36 of the Code of Federal Regulations (CFR) Part 800. As part of compliance with Section 106, DOE is writing to seek your comments on any issues or concerns for traditional cultural properties, sacred sites, or sites of traditional religious or cultural importance in the area that might be affected by the proposed Project. We respectfully ask that you provide any information or comments within 30 days to enable us to complete this phase of the project within the scheduled timeframe.

The DOE's proposed action is to provide cost-shared financial assistance to Minnkota. DOE proposes to provide approximately \$38.5 million of the Project's \$77 million estimated total cost.

The Project would be constructed as a stand-alone facility with a footprint that falls within an area of 25.8 acres, west and south of the Milton R. Young Station (MRY) (see **Figure 1**). Currently the area comprises equipment and materials storage, access roadways, and barren lands. The proposed Project would be located within the larger MRY associated industrial area that is bound by Nelson Lake to the north and east, coal production and plant waste disposal areas to the south, and agricultural and natural areas to the west.

The proposed Project site would be located in an area historically used for coal pile storage that has since been reclaimed. The area is undeveloped and provides minimal, low-quality wildlife habitat due to the disturbed and industrial nature of the area. The areas surrounding the Project site are generally low-quality wildlife habitat, including the adjacent landfill, coal mines, and industrial facilities. Nelson Lake abuts the existing MRY facility, but not the proposed Project area.

Facility construction would include preparation of laydown and fabrication areas to be used for parking, construction trailers, material storage and fabrication, and other activities to support the influx of workers and project construction activities. **Figure 2** depicts 10 locations on Minnkota-owned property being considered for use as temporary construction and laydown areas.

Approximately 97.0 acres of land within these designated areas would be required during construction. Following construction, these areas would be restored to their original conditions, with the exception of an approximately 7.0-acre area previously used for plant operations that would be retained for overflow parking for MRY and project operations.

The relocation of the following utilities would be necessary to accommodate the equipment requirements for construction of the project:

- Reroute MRY 230-kilovolt (kV) transmission line around the project;
- Reroute the BNI Coal 69 kV utility service line;
- Reroute and bury a local electric cooperative's 6.9 kV distribution line; and
- Reroute all scrubber blowdown and pond return pipelines.

**Figure 3** depicts the surveyed/previously impacted areas, including areas associated with the proposed transmission line reroutes.

If you have any questions, please contact Ms. Pierina Fayish at:

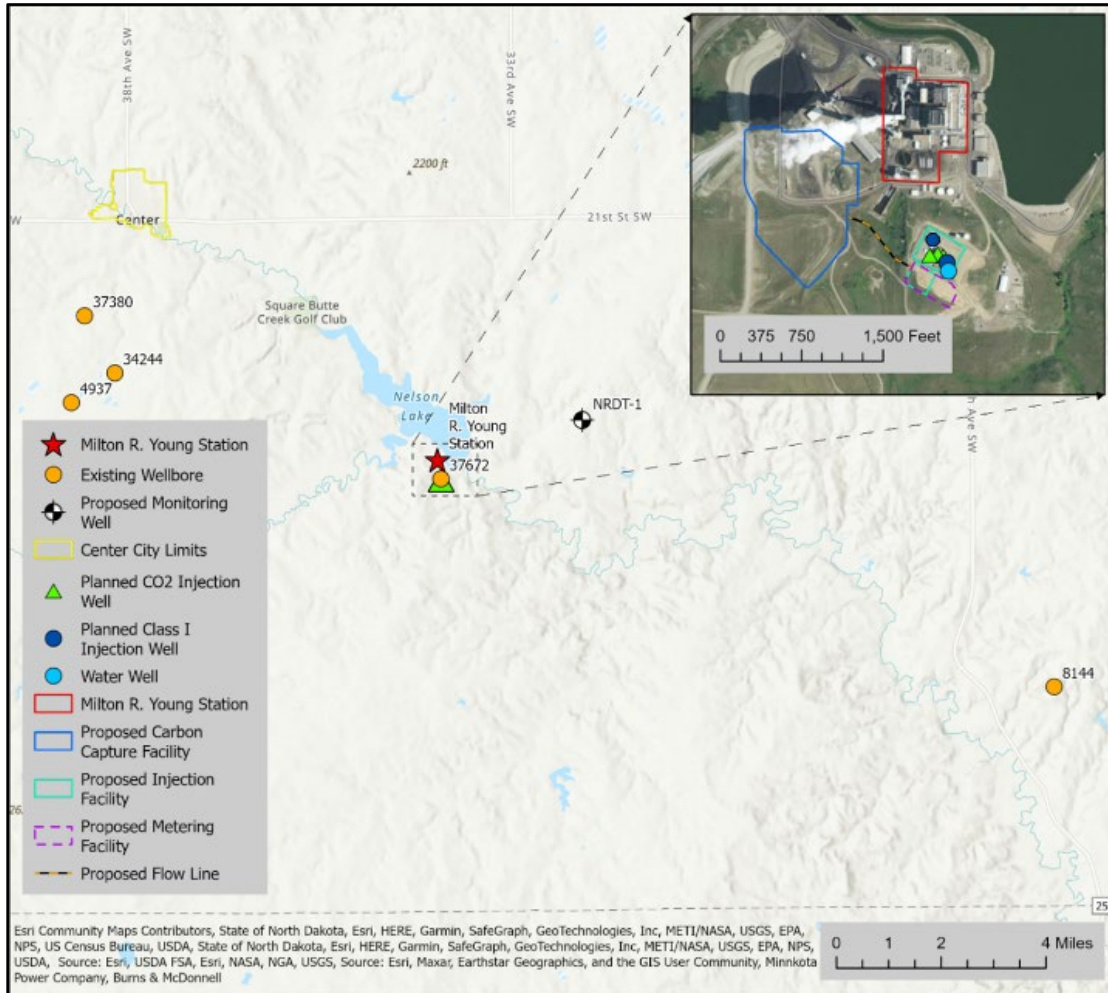
National Energy Technology Laboratory M/S:921-227  
626 Cochran Mill Rd  
Pittsburgh, PA 15236  
Attention: Pierina Fayish  
[Pierina.Fayish@netl.doe.gov](mailto:Pierina.Fayish@netl.doe.gov)  
(412) 386-5428

Thank you for your assistance in this matter.

Sincerely,



Pierina N. Fayish



**Figure 1 – Proposed Project Location – MRY Vicinity Map**

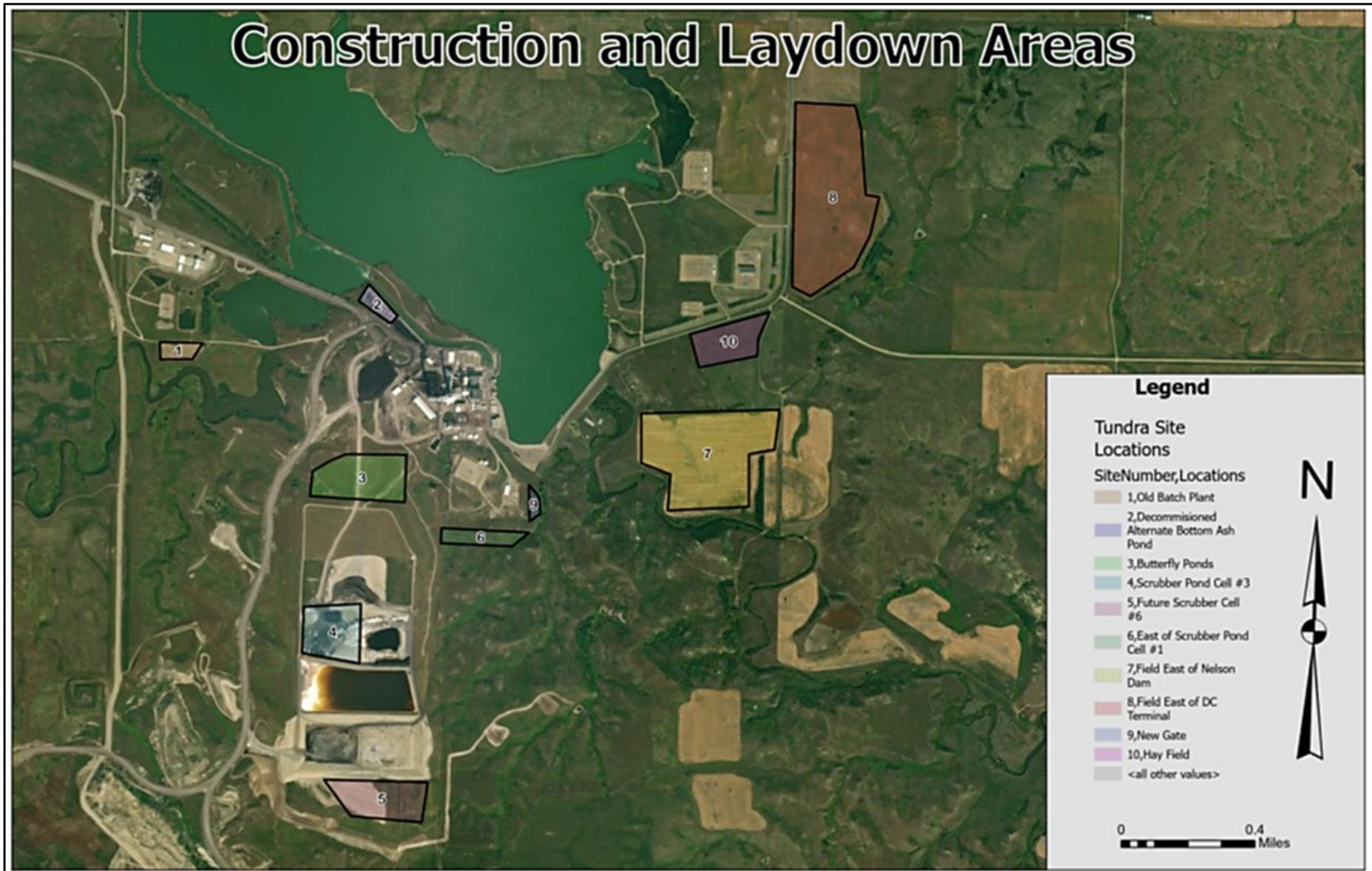
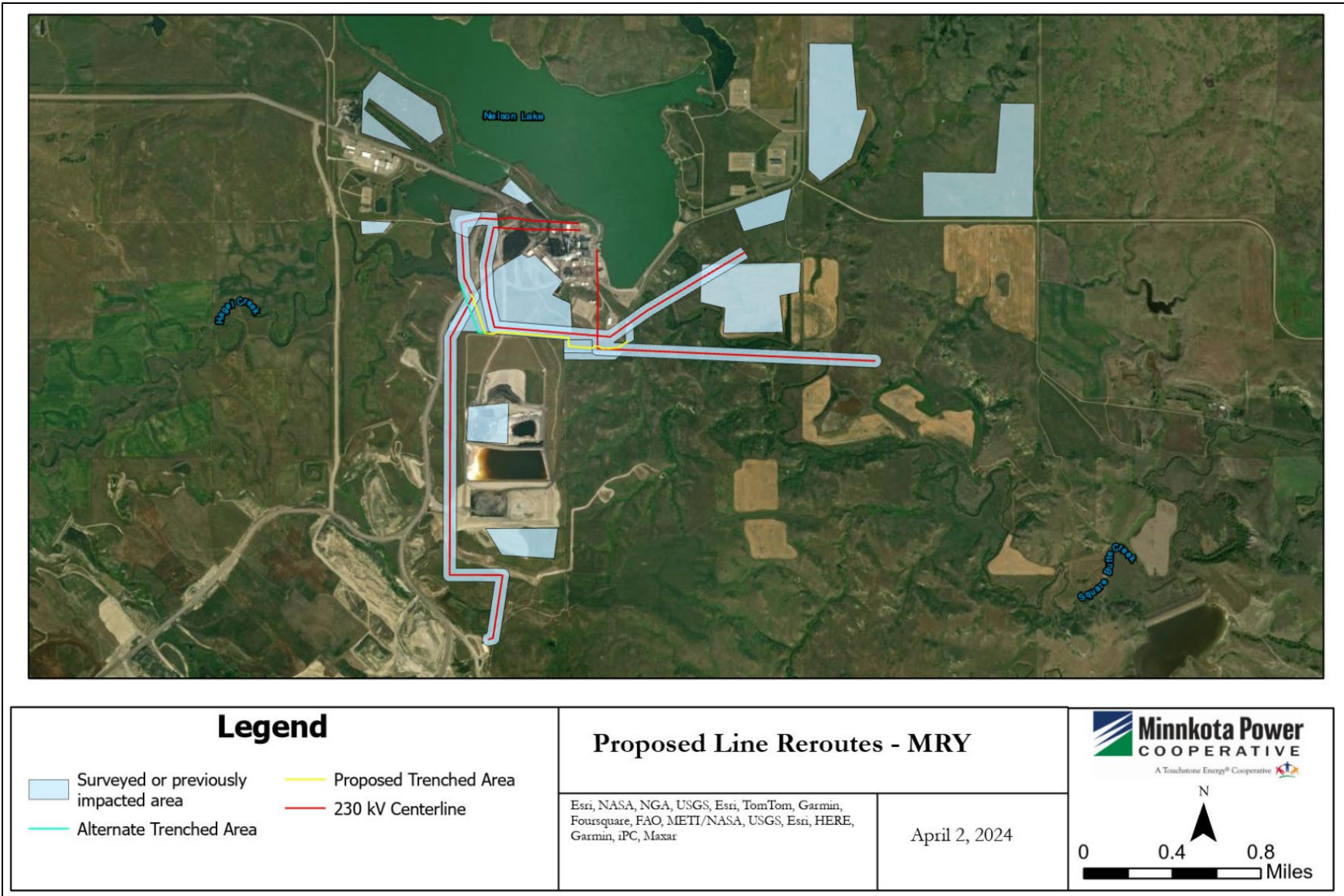


Figure 2 – Potential Construction Laydown Areas





**Figure 3 – Surveyed/Previously Impacted Areas, Including Proposed Transmission Line Reroutes**

### **Distribution List for Tribal Consultation Letter**

#### **Tribes**

Durell Cooper, Chairman  
Apache Tribe of Oklahoma  
P. O. Box 1330 Anadarko, OK 73005

Bobby Komardley, Chairman  
Apache Tribe of Oklahoma  
P. O. Box 1330 Anadarko, OK 73005

Jeffery Stiffarm, President  
Fort Belknap Indian Community of the Fort Belknap  
Reservation of Montana  
RR 1, Box 66  
Harlem, MT 59526

Michael Blackwolf, THPO  
Fort Belknap Indian Community of the Fort Belknap  
Reservation of Montana  
RR 1, Box 66  
Harlem, MT 59526

Allan Demaray, Director and THPO  
Three Affiliated Tribes of the Fort Berthold Reservation,  
North Dakota  
404 Frontage Road  
New Town, ND 58763

Mark Fox, Chairperson  
Three Affiliated Tribes of the Fort Berthold  
Reservation, North Dakota  
404 Frontage Road  
New Town, ND 58763