

Office of Packaging & Transportation Overview

EM SSAB Chairs Fall Meeting

Julia Shenk

Director, Office of Packaging & Transportation

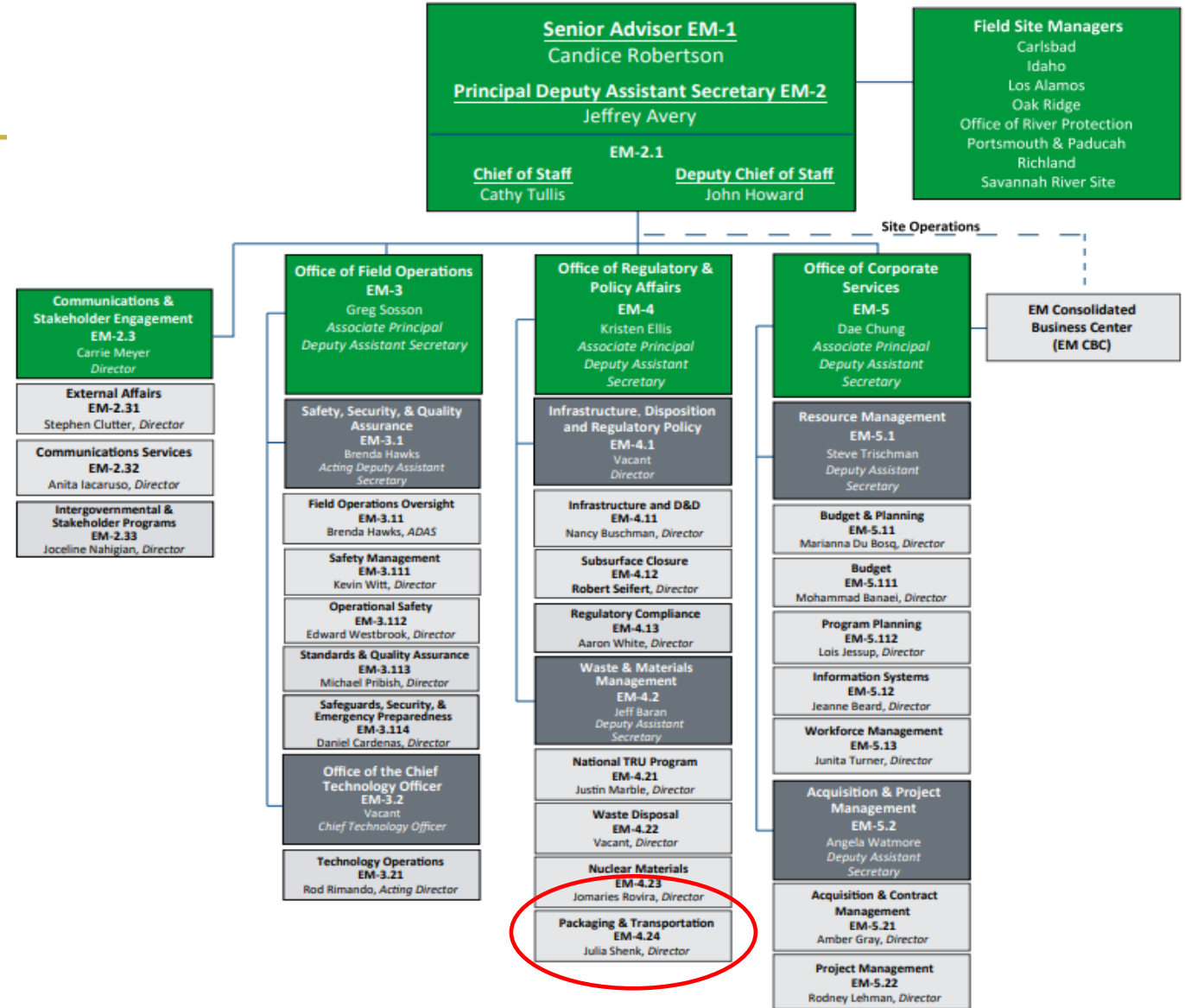
September 26, 2024



U.S. DEPARTMENT OF
ENERGY

OFFICE OF
**ENVIRONMENTAL
MANAGEMENT**

EM Organizational Structure



OPT Mission

The Office of Packaging and Transportation (OPT) protects people and the environment by ensuring safe, compliant and efficient packaging and transportation of materials. We achieve this mission by conducting packaging and transportation assessments and oversight; assisting field sites; and developing and managing policies, guidance and tools in accordance with DOE requirements and government regulations.



OPT Key Programs & Responsibilities

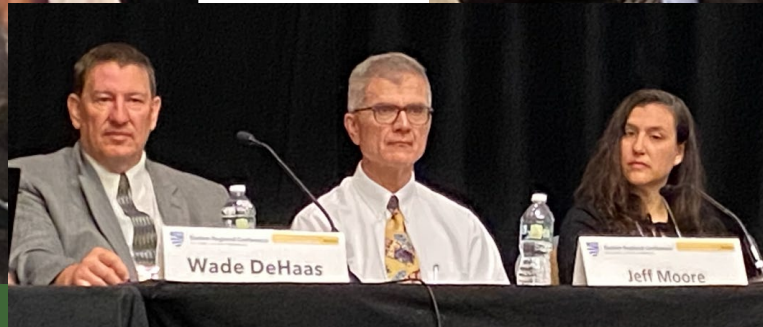
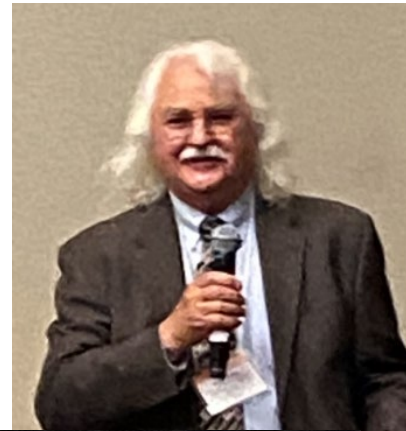
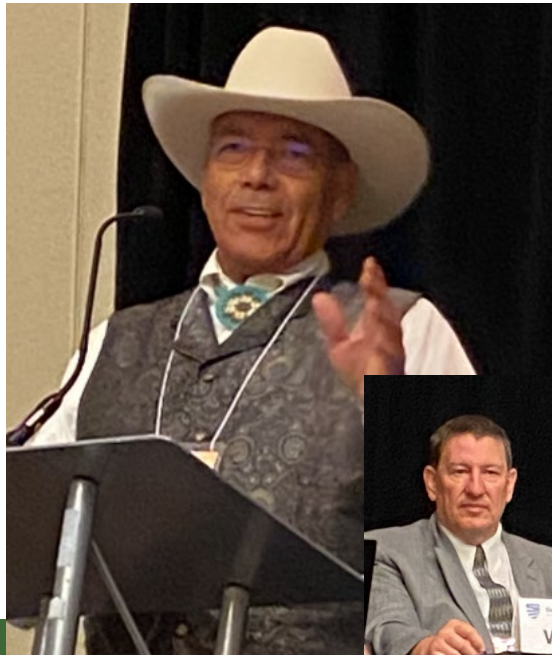
- Compliance and safety
 - Motor Carrier Evaluation Program (MCEP); 30+ carriers
 - Transportation Compliance Assurance Program (TCAP) for DOE sites
- Packaging Certification Program (PCP)
 - Supported by specialized teams at DOE National Laboratories
 - Type B package Certificates of Compliance and revisions
 - Accredited, graduate-level courses in packaging and transportation
 - RFID technology and transportation security innovations
- Partner engagement and training
 - Transportation Emergency Preparedness Program (TEPP)
 - National Transportation Stakeholders Forum (NTSF)

OPT Key Programs & Responsibilities

- Transportation planning and management tools
 - ATLAS – transportation management
 - RadAnalysis (formerly RADCALC) – shipping calculations
 - TRAGIS – transportation routing
- Field support
 - Program support for site transportation managers
 - Transportation Management Council; Packaging Management Council
- Policy and regulatory support
 - DOE Orders 460.1 and 460.2
 - Primary interface with other federal agencies on transportation matters

National Transportation Stakeholders Forum (NTSF)

- DOE's primary mechanism to communicate with States and Tribes about shipments of radioactive material
- EM solicits State and Tribal input for shipment planning and execution
- Chaired by EM-OPT



National Transportation Stakeholders Forum (NTSF)

- OPT provides funding for NTSF with additional funding and participation from the Office of Nuclear Energy (NE)
- Cooperative agreements with four State Regional Groups and the Tribal Radioactive Materials Transportation Committee (TRMTC)
- Public website: <https://www.ntsfc.info/>



Transportation Emergency Preparedness Program (TEPP)

- Provides tools for planning, training and exercises, and technical assistance to State and Tribal authorities to prepare for transportation incidents involving DOE radioactive material shipments
- First responder training provided at no cost to jurisdictions along DOE shipping routes
- FY24 training conducted in 20 states
 - 2140 students, 136 courses



Contacts

Julia Shenk
Director/NTSF Chair
301-903-1388

julia.shenk@em.doe.gov

Ellen Edge
TEPP manager/NTSF lead
301-903-8327

ellen.edge@em.doe.gov



AskPAT@hq.doe.gov