



July 19, 2024

SUBJECT: Notice of Scoping for the TerraPower, LLC's Kemmerer Unit 1 Preconstruction Activities, Lincoln County, WY (DOE/EA-2264)

The U. S. Department of Energy (DOE) is requesting public input on the scope of an Environmental Assessment (EA) for TerraPower, LLC's (TerraPower) Kemmerer Unit 1 Preconstruction Activities, located in Lincoln County, Wyoming. Kemmerer Unit 1 is based on TerraPower's Sodium Reactor Plant, an 840-megawatt thermal (MWt) pool-type sodium-cooled, fast neutron spectrum reactor (SFR) that contains a molten salt energy storage system which enables the plant to vary its supply of electrical energy to the grid, up to 500 megawatts electric (MWe) net, while maintaining constant reactor power.

DOE is proposing to authorize the expenditure of federal funding by TerraPower to conduct preconstruction activities for the Sodium Reactor Plant, Kemmerer Power Station Unit 1. Activities would include but are not limited to site preparation, non-structural backfill, trailers, construction of multiple buildings, installation of underground services, laying foundations, installation of stormwater management ponds, locating portable bathroom facilities, establishing temporary power, and constructing temporary parking areas.

Pursuant to the requirements of the National Environmental Policy Act (42 U.S.C. 4321 et seq.; NEPA), Council on Environmental Quality regulations (40 CFR Parts 1500 to 1508), and DOE NEPA implementing procedures (10 CFR Part 1021), DOE, is preparing a draft EA to evaluate the potential direct, indirect, and cumulative impacts of the proposed project.

We formally invite you to engage with us in Government-to-Government consultation(s) regarding the proposed project so that we may be aware and take into consideration your views and possible impacts to the Tribe. If you would like to schedule a consultation meeting regarding the proposed project, please contact Gretchen Applegate, NEPA Document Manager, at (240) 252-0399 or gretchen.applegate@hq.doe.gov, at your earliest convenience. You are also welcome to contact Brian Ó Donnchadha, Tribal Liaison, at (240) 252-8577 or brian.odonnchadha@hq.doe.gov, at your earliest convenience.

Resource Areas that Will be Considered in the EA

The EA will describe and analyze potential impacts to the human environment that would be caused by the proposed project and, as applicable, will identify possible mitigation measures to reduce or eliminate those impacts. DOE has identified the following resource areas and issues for consideration in the EA:

- Biological Resources
- Socioeconomics
- Environmental Justice
- Cultural and Historic Resources

- Infrastructure including emergency services, transportation, and traffic
- Accidents including destructive acts

Scoping

Scoping is a key component of the NEPA process and is used to help the agency define the scope of issues to be addressed in the EA. DOE welcomes your input on the proposed scope of **DOE/EA-2264: TerraPower, LLC's Kemmerer Unit 1 Preconstruction Activities, Lincoln County, WY**. You can review a detailed project description at: <https://www.energy.gov/nepa/doeea-2264-terrapower-kemmerer-unit-1-preconstruction-activities>

To ensure DOE receives your written comments in time for consideration in preparation of the draft EA, please provide them on or before August 15, 2024. DOE welcomes your comments by physical or electronic mail.

Provide comments by physical mail to:

U.S Department of Energy
ATTN: Kyra Perkins
12011 Sunset Hills Rd
Reston, VA 20190

Provide comments by e-mail to:

Gretchen Applegate, DOE NEPA Document Manager
oced.esh@hq.doe.gov

Please indicate in any response to this letter if you would like your comments withheld from the record due to sensitive or proprietary information.

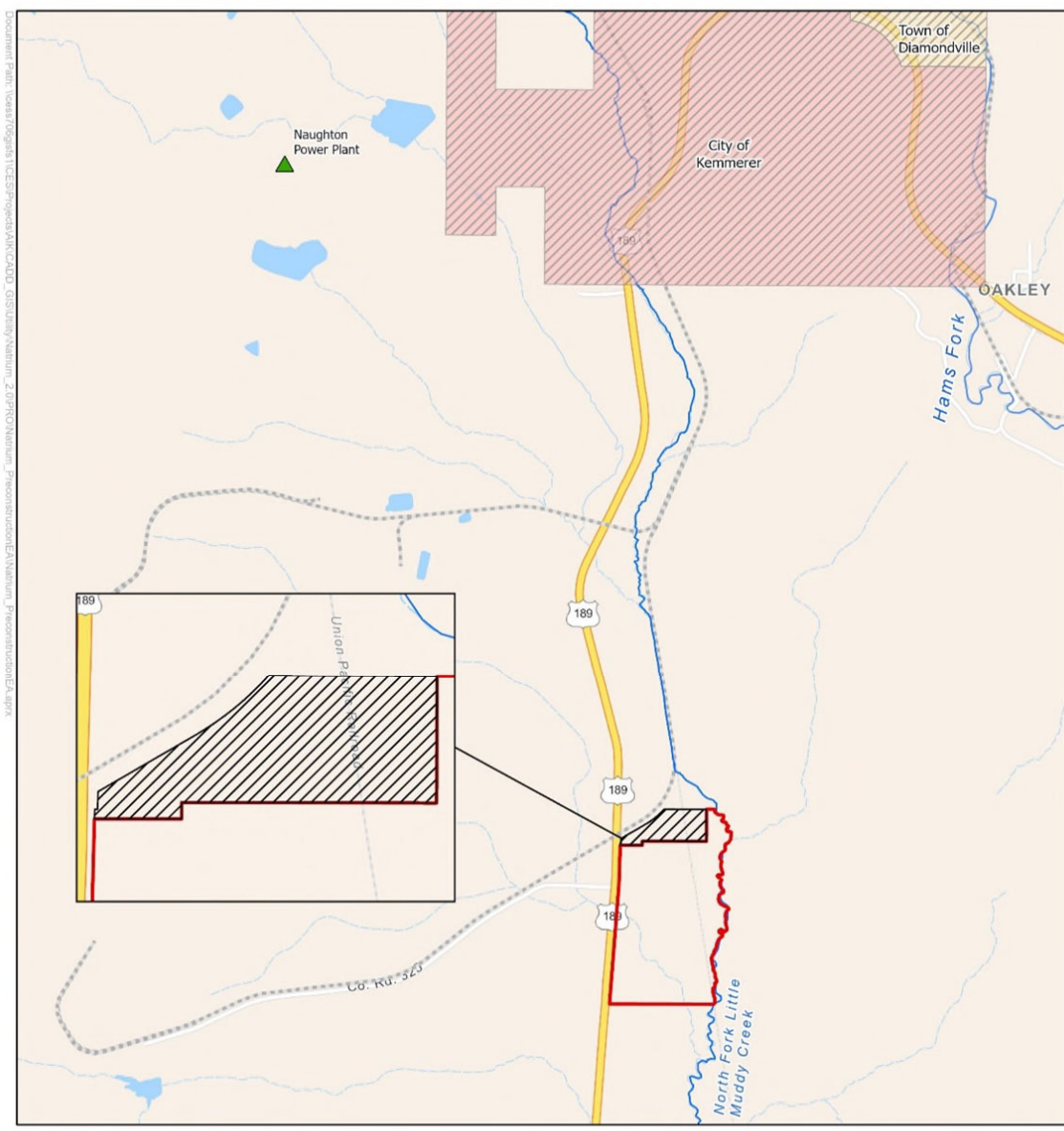
DOE intends to publish the draft EA for review and comment when it is available and to host a public meeting on the draft EA in the project area. DOE will provide information on the EA throughout the process at the web address provided above.

We look forward to hearing from you.

Sincerely,

Gretchen Applegate

Gretchen Applegate
NEPA Specialist



Document Path: \\casar\log\gis\TCES\Projects\ARK_CADD_GIS\Utility\Natum_2_01\PROJ\Natum_Precinct\arc\EA\Natum_Precinct\arc\EA\ark

LEGEND

- Kemmerer Unit 1 Site
- Sodium TFF Property
- City of Kemmerer
- Town of Diamondville
- Railroad
- Naughton Power Plant

0 0.25 0.5 1 Miles

