



U.S. DEPARTMENT OF
ENERGY

Cleanup to Clean Energy Initiative



Secretarial Call to Action

- In July 2023, Secretary Granholm launched the Cleanup to Clean Energy initiative with the goal of repurposing underused DOE land to generate clean electricity.
- The initiative supports the Executive Order 14057, *Catalyzing Clean Energy Industries and Jobs Through Federal Sustainability*, requirements for agencies to:
 - achieve 100 percent carbon pollution-free electricity use on a net-annual basis by 2030, including 50% 24/7 clean electricity and
 - use their real property assets including land for the development of new clean electricity generation and storage through leases, grants, permits, or other mechanisms, to the extent permitted by law.
- DOE has identified about 34,000 acres of land potentially available at five of its sites for development of high-generation clean electricity projects. Additional acreage may be offered in the future.
- DOE has broad statutory authority regarding the disposition of real property that it has acquired in connection with carrying out the functions of the Atomic Energy Act of 1954 as amended (AEA), including the authority to lease land or grant easements for long-terms and non-competitively.

Cleanup to Clean Energy Approach

DOE developed a uniform, but flexible, approach to identify potential developers. Highlights include:

- **Stakeholder Involvement.** DOE is soliciting community feedback by holding roundtable discussions with local leaders. We are also briefing Congressional, State, and local leaders to build support.
- **Tribal Consultation.** At sites with local Tribal Nations, DOE is engaging with Tribes.
- **Engagement with Potential Developers.** Each site is issuing a Request for Information to gauge interest and obtain information on potential projects. DOE is also holding an Information Day at each site to discuss the initiative and tour the available land.
- **Competition.** DOE has the authority to lease land without competition but is using a competitive process to provide opportunity and identify the best projects.
- **Collaboration with Off-Takers.** DOE is encouraging developers to partner with potential off-takers (especially at remote sites) to strengthen opportunities for financing, transmission connections, and community support.
- **Transmission Challenges.** Depending on each site's transmission situation and State regulations, Developers will need to coordinate with local utilities to overcome interconnection issues.
- **Research and Development.** DOE is facilitating opportunities for potential developers to partner with our national laboratories to further research on clean electricity technologies and the impact on the grid.
- **Increasing DOE CFE Use.** DOE's primary goal is to generate clean energy for the grid but is also ensuring that our sites benefit.

Cleanup to Clean Energy Implementation Schedule

SITE	Request for Information (RFI) ISSUED	RFI CLOSED	INFO DAY	DRAFT Request for Quote (RFQ) ISSUED	DRAFT RFQ CLOSES	RFQ ISSUED	RFQ CLOSES
HANFORD	8/30/23	10/12/23	9/22/23	12/20/23	2/5/24	3/1/24	4/15/24
Idaho National Laboratory (INL)	10/17/23	12/15/23	10/25/23	NA	NA	3/1/24	4/1/24
Nevada National Security Site (NNSS)	12/3/23	1/12/24	2/13/24	NA	NA	3/1/24	3/31/24
Savannah River Site (SRS)	10/17/23	1/2/24	Phase 1: 2/29/24	Phase 1: NA	Phase 1: NA	Phase 1: 3/11/24	Phase 1: 4/19/24
Waste Isolation Pilot Plant (WIPP)	2/27/24	3/20/24	3/27/24	NA	NA	4/19/24	5/15/24

Complete
 Pending

Hanford

SITE	RFI ISSUED	RFI CLOSED	INFO DAY	DRAFT RFQ ISSUED	DRAFT RFQ CLOSES	RFQ ISSUED	RFQ CLOSES
HANFORD	8/30/23	10/12/23	9/22/23	12/20/23	2/5/24	3/1/24	4/15/24

Available Land:

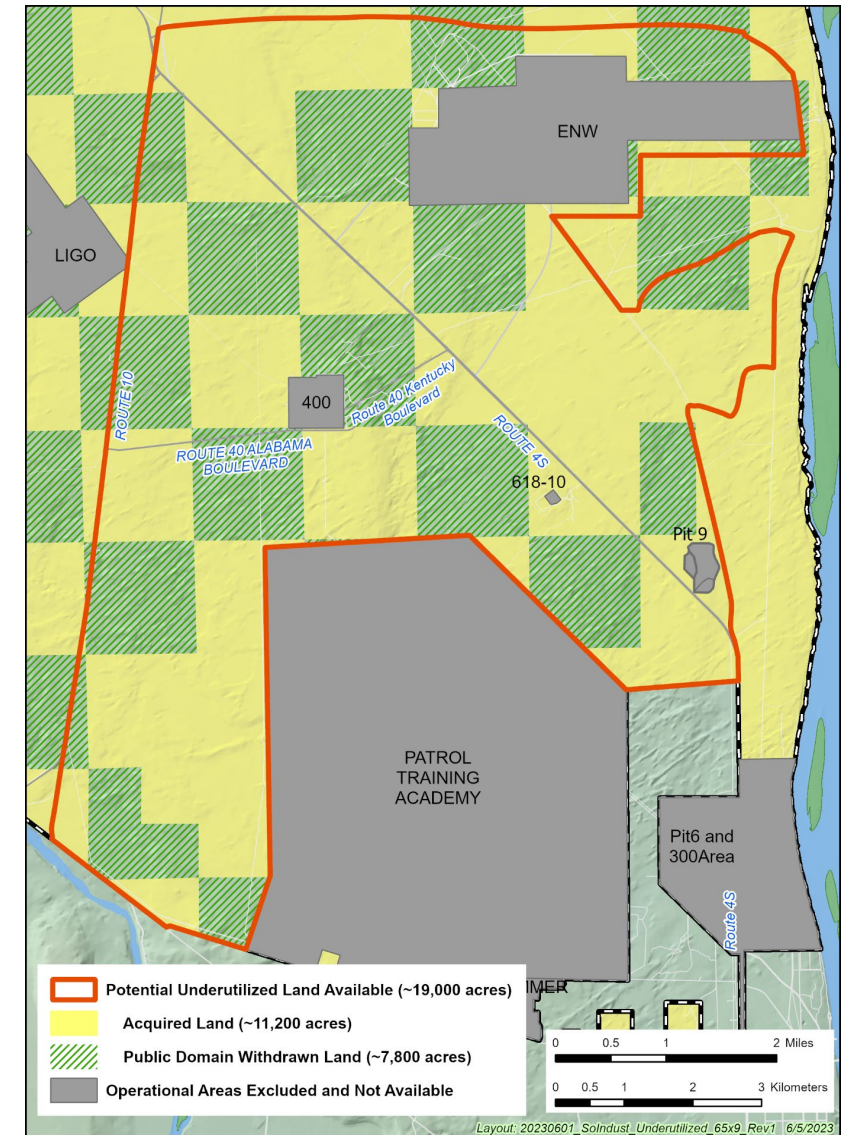
- Up ~14,000 acres, about half of which is withdrawn land subject to a 1953 Public Land Order (PLO) with Department of the Interior (DOI)/Bureau of Land Management (BLM) for purposes in “connection with the atomic energy program”

Current Status

- Final RFQ issued and closed
- Incorporated best practices from Clean Energy Funding Opportunity Announcements to include policy factors that enable DOE to choose projects that advance multiple policy objectives

Next Steps:

- Select one or more projects/proposals for additional discussion/negotiation
- Enter into agreement(s) by the end of this fiscal year



SITE	RFI ISSUED	RFI CLOSED	INFO DAY	DRAFT RFQ ISSUED	DRAFT RFQ CLOSES	RFQ ISSUED	RFQ CLOSES
INL	10/17/23	12/15/23	10/25/23	NA	NA	3/1/24	4/1/24

Available Land:

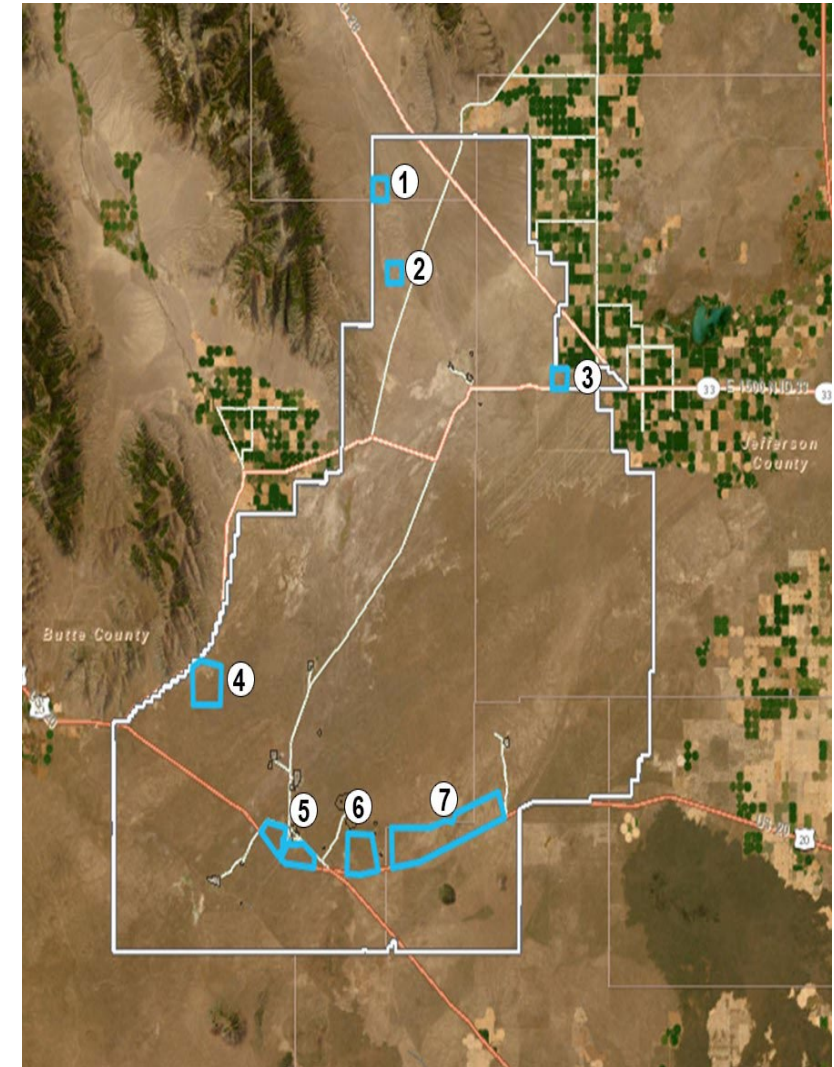
- 2,560 acres of DOE-owned land

Current Status:

- Final RFQ issued for “Generation Ready” projects
- Intends to open this RFQ on a regular basis
- Non-electric generation facilities as well as development and demonstration facilities related to nuclear energy are not included, but there may be other options for siting these types of facilities at Idaho

Next Steps:

- Select one or more projects/proposals for additional discussion/negotiation
- Enter into agreement(s) by the end of this fiscal year



SITE	RFI ISSUED	RFI CLOSED	INFO DAY	DRAFT RFQ ISSUED	DRAFT RFQ CLOSES	RFQ ISSUED	RFQ CLOSES
NNSS	12/3/23	1/12/24	2/13/24	NA	NA	3/1/24	3/31/24

Available Land:

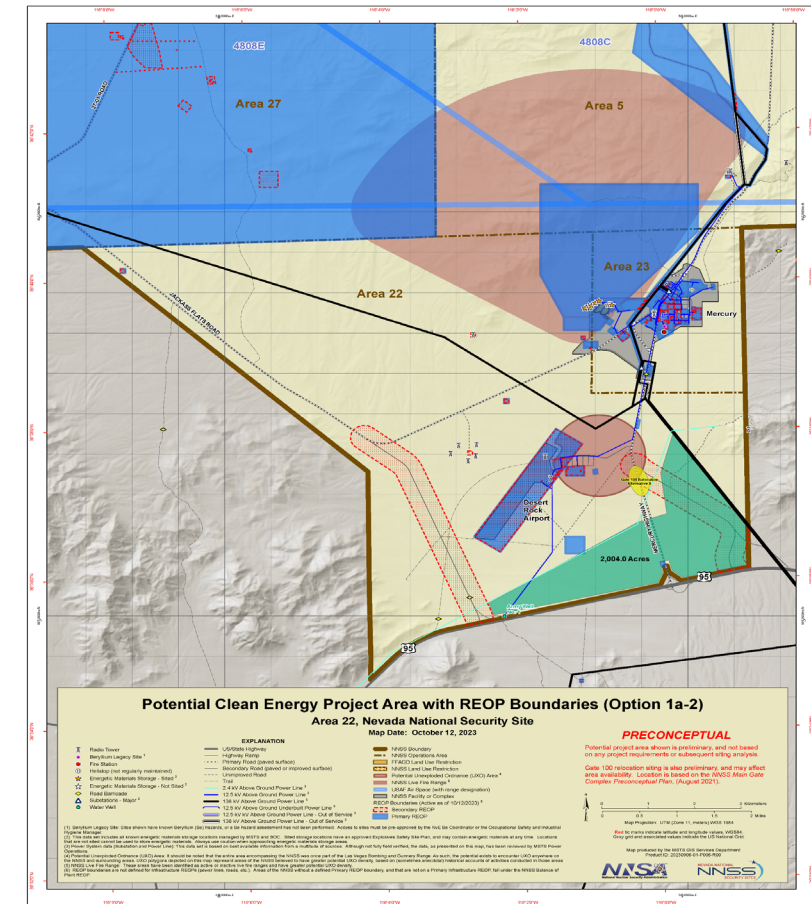
- ~2,000 acres of withdrawn land subject to a 1965 PLO with DOI/BLM for use in connection with NNSS.

Current Status:

- Issued final RFQ for solar energy generation

Next Steps:

- Downselect one or more projects/proposals for additional discussion/negotiation
- Enter into agreement(s) by the end of this fiscal year



SITE	RFI ISSUED	RFI CLOSED	INFO DAY	DRAFT RFQ ISSUED	DRAFT RFQ CLOSES	RFQ ISSUED	RFQ CLOSES
SRS	10/17/23	1/2/24	Phase 1: 2/29/24	Phase 1: NA	Phase 1: NA	Phase 1: 3/11/24	Phase 1: 4/19/24

Available Land:

- ~6,750 acres for solar projects (Phase 1)
- All acreage is DOE owned

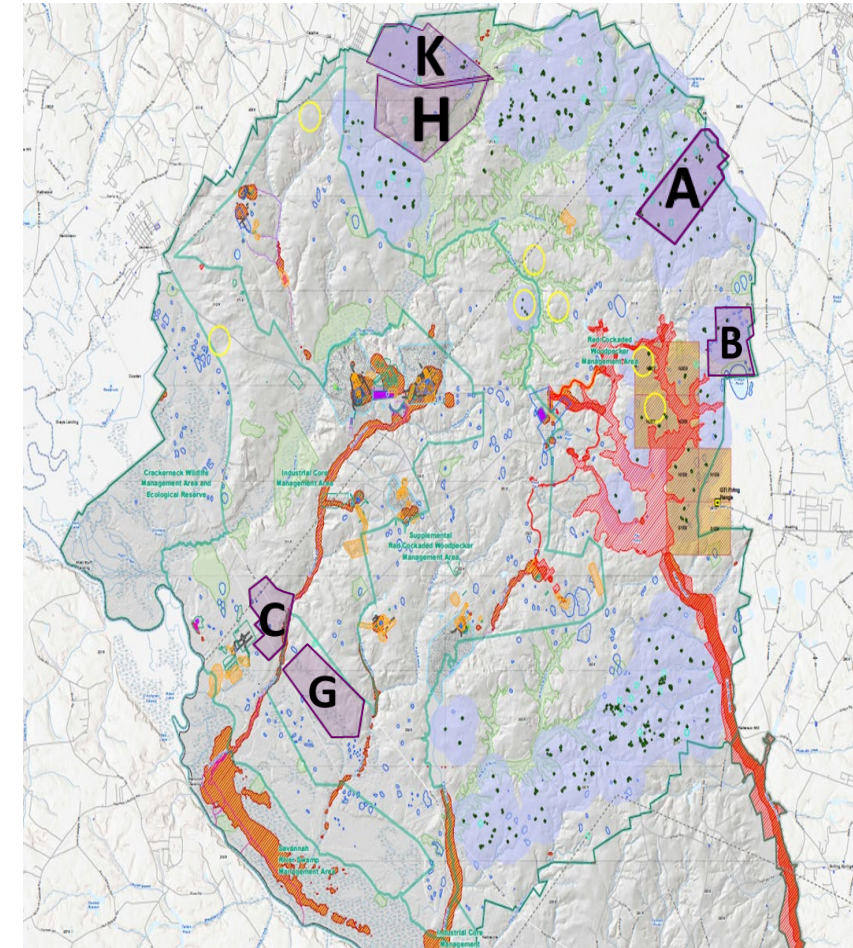
Current Status:

- Final RFQ issued for Phase 1 solar projects

Next Steps:

- Make selection for Phase 1 in time for developer(s) to submit application to Dominion Energy for interconnection studies by August.
- Hold Information Day for Phase 2, which will be for a broad range of technologies, including nuclear

Solar Site	Approx. Acreage
A	1000
B	1000
C	850
G	1300
H	1300
K	1300
Total	6750



SITE	RFI ISSUED	RFI CLOSES	INFO DAY	DRAFT RFQ ISSUED	DRAFT RFQ CLOSES	RFQ ISSUED	RFQ CLOSES
WIPP	2/27/24	3/20/24	3/27/24	NA	NA	4/19/24	5/15/24

Available Land:

- ~9,000 acres of withdrawn land subject to a 1999 statute that provides the Energy Secretary authority to determine appropriate land uses

Current Status:

- Issued RFQ

Next Steps:

- Select one or more projects/proposals for additional discussion/negotiation
- Enter into agreement(s) by the end of this fiscal year

