

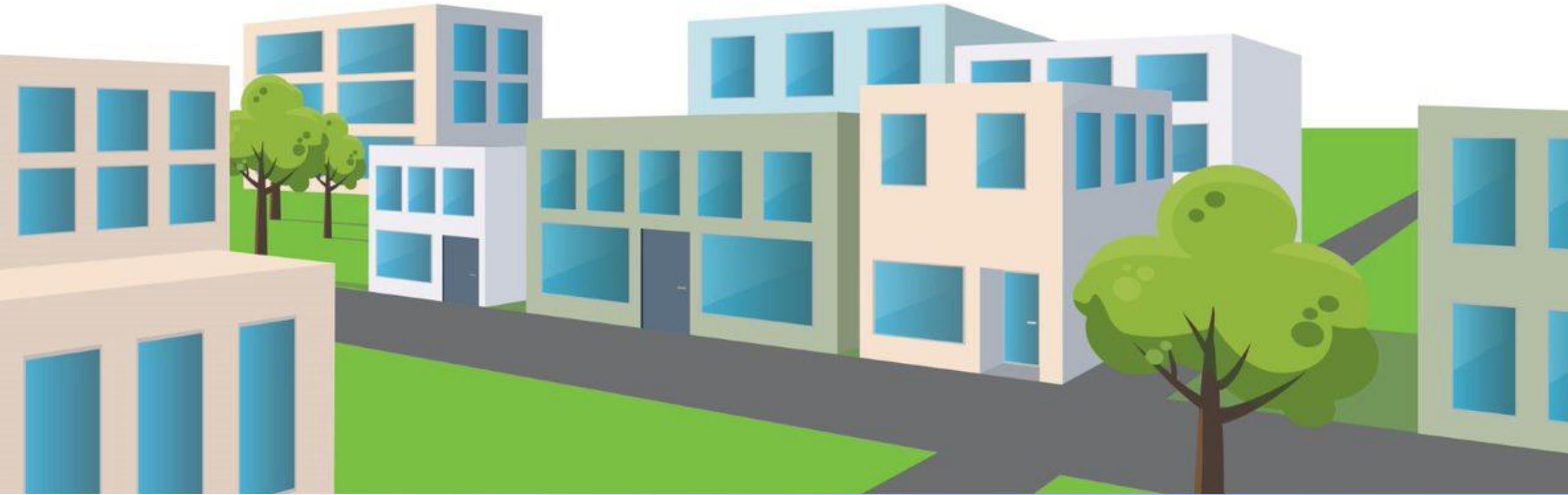
# CONSORTIA INTERIM PROGRESS REPORTS

Rensselaer Polytechnic Institute



# COLLABORATIVE PARADIGM FOR COMMUNITY ENGAGEMENT

*Consent-based Siting Consortia – Quarterly Meeting #4  
May 22 and 23, 2024*



# Overall Project Progress

- **Ahead or On Track for all project tasks**
- *Modifications* from original project plan as submitted in the consortium’s application:
  - *Schedule*: Milestone Dates shifted 1-for-1 to align actual and anticipated start dates
    - Anticipated Start: 5/1/23
    - Actual Start: 9/20/23
    - *All dates shifted 4 months and 20 days*
  - *Tribal Nations* identified as potentially affected by our consortium strategy
    - Original: Stockbridge-Munsee, Yankton Sioux, Cheyenne River Sioux, Shoshone-Bannock, Prairie Island Indian Community, Yakama Nation
    - *Updated*: Stockbridge-Munsee Community Band of Mohican Indians, Seneca Nation, Navajo Nation

Milestone Log			
Milestone Identification Number	Milestone Description	Planned Completion Date	Current Progress or Actual Completion Date
M1	Initiate best practices & lessons learned: recruiting community members for dialogue.	12/19/2023	Complete
M2	Generate best practices & lessons learned: community engagement session planning.	6/19/2025	In Progress
M3	Develop interactive and immerse visualizations of nuclear waste issues in community.	3/19/2025	In Progress
M4	Systematically elicit, gather, and understand community needs through value mapping.	6/19/2024	In Progress
M5	Develop community-centered and nuclear waste science fundamentals learning modules.	9/19/2024	In Progress
M6	Compile and analyze community feedback: program summary.	9/19/2025	Pending



# Key Developments

- Many **Engagement Activities** were completed and planned: (for details, see Slide 5: Engagement). Highlights: Texas, CSX, Tribal Citizens
- Development of **CBS Learning Modules** in good progress. They will have a small-scale test run during *STEAMM Inventor's Studio Summer Program*<sup>1</sup>, 7/8-7/19/2024, then a full demonstration during *PREFACE*<sup>2</sup> 7/28-8/10/2024.
- Development of **Transportation Related Models** in good progress. We are currently exploring methods to quantify the consequence of accident scenarios.
  - Key Focus: Route Optimization Process Development

1- STEAMM Inventor's Studio: <https://summer.rpi.edu/programs/steamm-inventors-studio-july-8-19-2024>

2 - PREFACE: <https://info.rpi.edu/pre-college-initiatives/preface-2024-rensselaer-summer-engineering-design-program>

# Key Observations\*

- Cautious Optimism (for research & new tech), Concerns about Weapons Proliferation & Safety
  - Younger generation open to nuclear, susceptible to legacy “anti- vs. pro-” polarization due to unfamiliarity
    - “I was excited about nuclear until I started doing my own research. Now I’m scared” – RPI Enrichment Seminar
    - “There is so much energy here, we *have* to build [new nuclear] plants” – Chem. Eng. undergrad exploring SNF constituents
    - Unbalanced approach to engagement may induce additional “Anti- vs. Pro” tribalism
  - Holistic framing of nuclear waste, including challenges & opportunities, produces follow-on discussions
    - Soliciting input regarding “Consolidated Interim Storage only” results in abrupt ending of conversations
    - Framing the current SNF situation as a part of a larger problem to be solved results in ongoing dialogue
    - Ex: Uranium Mining, Depleted Uranium Inventory, SNF Energy Content, Light Water Reactor Alternatives
  - People want information, not just a “Yes” or “No” vote on Interim Storage
    - Favorable responses to rad waste accident alert system proposal (Amber Alert style notification w/guidelines for safety)
    - Transportation modeling of atypical scenarios is of specific interest
  - Safety is a subjective term; “SNF is environmentally segregated and securely packaged” is preferred language
    - Recommend avoiding the use of “safety” as a descriptor; Consent regarding “safe” as a general concept is problematic
    - I **know** I am a safe driver; I am still struggling to convince my wife due to the subjective nature of safety as a concept

*\*IRB approval received late in Q1 '24. Future observations will include specific feedback from engaged persons*

# Engagement



Rensselaer

- **Prior Engagement Highlight:** Tribal Citizen Engagement (Direct & Indirect)
  - Direct: Indigenous Consultant (Navajo Citizen) co-wrote adjacent grant proposal w/RPI Consortium
    - Proposal writing process very informative regarding Tribal concerns. Not selected for full application
  - Indirect: RPI Consortium Member that has broad Tribal Citizen network provided many insights
    - Immediate needs are of greater interest and significance than long term planning
      - Roof repair, education (formal and off-res experience) opportunities, disappearing language & culture
      - *Lesson Learned: Gift cards to pay attendees is best for program administrators, not necessarily best for attendees*
- **Pending Engagement Highlights:** Texas (Communities and State Employees) & CSX (Rail Owner)
  - **Texas:** Facilitation Consultant for RPI Consortium identified commonality between DOE CBS process development and Texas Department of Transportation (TxDOT) [Strategic Public Engagement Guidance](#)
    - Collaborative Process Development: Communities interested in disrupting legacy of new roads built using eminent domain and other methods that exploit minority populations collaborated with TxDOT to develop a [Strategic Public Engagement Guidance Report](#). State (TxDOT) developed a suite of best practices and resources by forming internal workshops, gathering input from other states, and achieving statistically valid participation from racial minorities (Hispanic, Black/African-American/Asian), people with disabilities, people from low-income households, and seniors
    - The upcoming [Aya Symposium](#) will serve as a networking opportunity to explore potential CBS collaboration(s)
  - **CSX:** RPI Consortium Thought Experiment: “What is the 1<sup>st</sup> SNF Cask we would propose be moved, and where would we advocate sending it?”
    - CSX is the major rail operator in Collaborative Paradigm Area of Engagement. Initial discussion with Fleet Manager to understand their process. Anticipating additional dialogue regarding polices, procedures, experience, expectations, etc.

# Engagement Details - Completed



What is the engagement?	Date	Location	Brief description (if not in previous slides)	# of Participants
<i>Planning Sessions for area of engagement</i>	Feb – Mar	<i>Schenectady, NY (Google Meet)</i>	Series of meetings to plan movie screening for local high school CE <sup>1</sup>	8
<i>Movie Screening</i>	3/20/24	<i>Proctors, SCH, NY</i>	Oppenheimer, context, & interest survey	~275
<i>Public Debate</i>	4/11/24	Vasudha, Troy, NY	Upper Hudson Peace Action & RPI Sunrise Movement chapter: Nuclear Power's Role In a Changing Climate	~20
<i>Strategy Session (SCH<sup>2</sup>)</i>	3/20/24	Ferrari's, SCH, NY	Intro. discussion w/ SCH Planner	4
<i>Strategy Session (TRMTC<sup>3</sup>)</i>	3/29/24	Microsoft Teams	Review of RPI TE <sup>4</sup> Strategy	4
<i>Introductory Discussion</i>	4/24/24	Austin, TX (via Webex)	TxDOT <sup>5</sup> <a href="#">Public Engagement Guide</a>	4
<i>Strategy Session (Navajo)</i>	Jan – Apr	New Mexico (via Webex & phone)	TE w/ Navajo Citizen as Consultant	1-on-1
<i>Transportation Logistics Learning w/Fleet Manager</i>	5/11/24	Jacksonville, FL (via phone call)	General overview of SNF Transport Route Optimization; logistics Q&A	1-on-1

## Notes

1 – Community Engagement

3 – Tribal Radioactive Materials Transportation Committee

5 – Texas Department of Transportation

2 – Schenectady, New York

4 – Tribal Engagement



# Engagement Details - Planned



What is the engagement?	Date	Location	Brief description (if not in previous slides)	Participants
<a href="#"><u>IISE Conference</u></a>	5/18 – 5/21	Montreal, Canada	Pres. – Modeling Transport Risk for SNF	TBD
<a href="#"><u>Aya Symposium</u></a>	6/6	Dallas, Texas	Networking w/TxDOT et. al. for SNF Transport Modeling	TBD
<a href="#"><u>USSEE Conference</u></a>	6/6 – 6/9	Schenectady, NY	Panel Session – “Nuclear Tech. as a Nexus of Gov’t, Ind., Acad. and Comm. Collab.”	TBD
<a href="#"><u>STEAMM Inventor's Studio</u></a>	7/8 – 7/19	Troy, NY	2-4 hour Exp.	45
<a href="#"><u>EASST-4s 2024</u></a>	7/16 – 7/19	Amsterdam, Neth.	Pres. – “Dev. a Collab. Paradigm for Engagement:”	TBD
<a href="#"><u>The New York State Fair</u></a>	8/21 – 9/2	Syracuse, NY	Sponsoring demonstrations of our CBS efforts	TBD
<a href="#"><u>ASA Annual Meeting</u></a>	11/14 – 11/17	Baltimore, MD	Pres. – “Engaging Contexts”	TBD
<a href="#"><u>PREFACE</u></a>	7/28 – 8/10	Troy, NY	2-week In-Residence Exp.	~35
<i>Debate Series Cont.</i>	TBD	Troy, NY	Proliferation & Sustainability	TBD
<i>SCH Engagement Cont.</i>	~Jul.	Schenectady, NY	Technology & Social Impact	TBD
CSX	TBD	East Coast	SNF Route Optimization Process Development	TBD



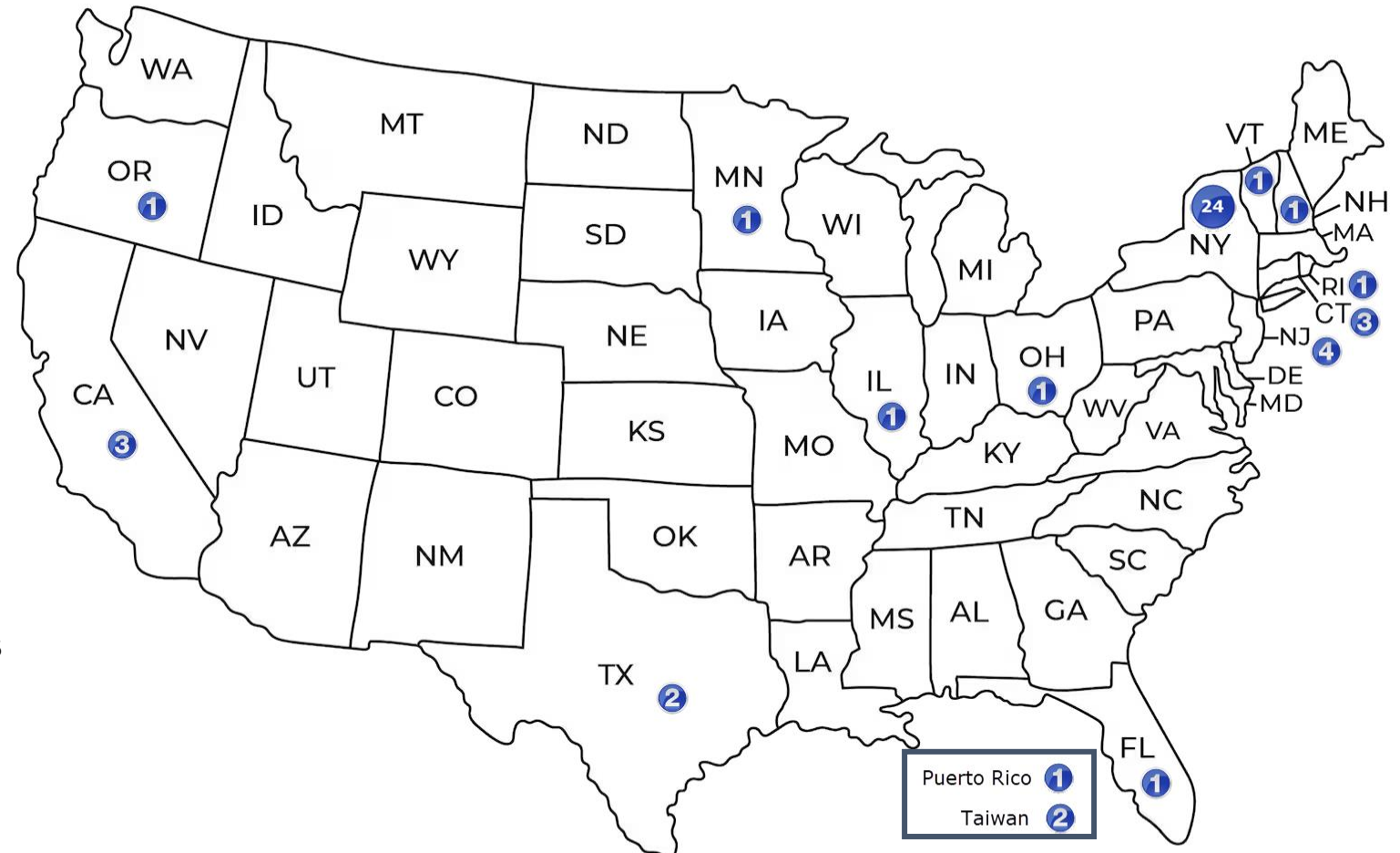
# Q3 '24 Engagement: STEAMM & PREFACE

## Accepted Attendee Representation

- ✓ 34 In 6 Consortia States
- ✓ 11 In 8 Non-Consortia U.S. Territories
- ✓ 2 International Attendees
- Demographic info can be shared after session complete

## Please reach out if interested in:

- RPI sharing your Consortium info with attendees
- Learning more about STEAMM or PREFACE (2025 sessions possible)
- Incorporating topics / curricula / concepts in STEAMM or PREFACE
- Contact Jim Olson: [olsonj7@rpi.edu](mailto:olsonj7@rpi.edu)



Locations identified on this map are state only.  
Attendee Personal geographic areas are not represented



# Rensselaer

For questions or comments related to this consortium, please contact:

Name: James “Jim” Olson

Email: [olsonj7@rpi.edu](mailto:olsonj7@rpi.edu)

Phone: (518) 276-2389

For more information, visit us at [energy.gov/consentbasedsiting](https://energy.gov/consentbasedsiting)

