



U.S. DEPARTMENT OF
ENERGY | OFFICE OF
ENVIRONMENTAL
MANAGEMENT


WVDP Project Update

Main Plant Process Building Controlled Deconstruction

Kelly Wooley, CHBWV Deputy General Manager

Citizen Task Force Meeting – March 27, 2024

Safety



Metric	February 2024 12-Month Rolling Average
Total Recordable Cases (TRC)	0.58
Days Away Restricted or Transferred (DART)	0.29
Last Lost Time Case Recordable	April 17, 2023
Last Recordable Injury	June 22, 2023

Background Photo: VPP Superior Star presentation to WVDP employees (2023)

Main Plant Deconstruction (Cont.)



Main Plant west wall before deconstruction (June 2022)



Main Plant west wall (March 2024)

Main Plant Deconstruction



Hot Cell deconstruction

Main Plant Deconstruction (Cont.)



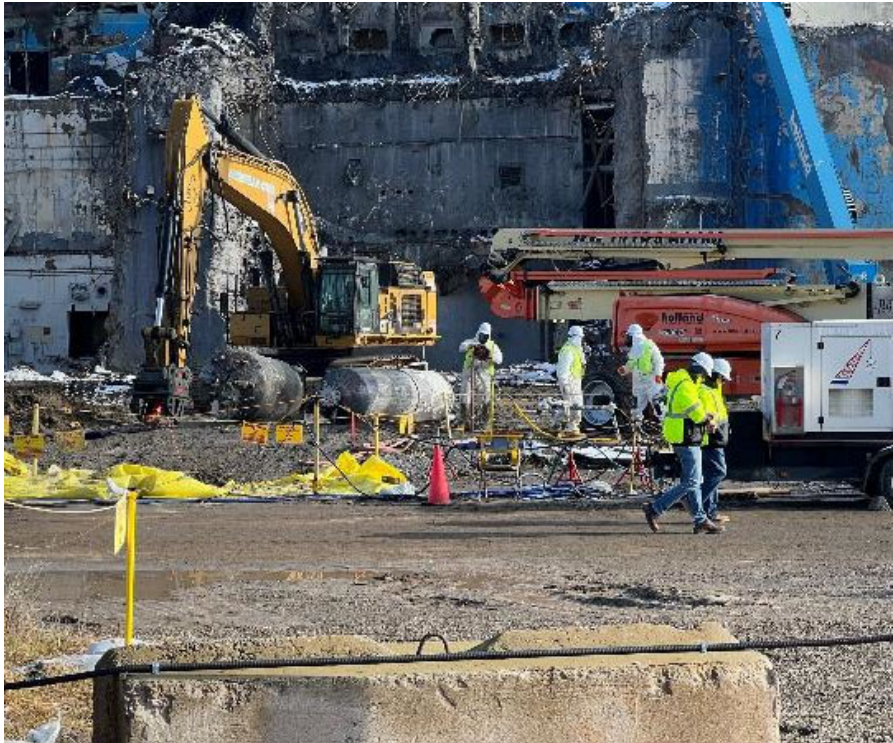
Waste Loadout

Main Plant Deconstruction (Cont.)



Liquid Waste Cell tank removal (7D-2)

Main Plant Deconstruction (Cont.)



Liquid Waste Cell Tank 3D-2 and 7D-14 removed from Main Plant and prepared for loading

Main Plant Deconstruction (Cont.)



Liquid Waste Cell tanks removed, and one being loaded



Main Plant Deconstruction (Cont.)



Deconstruction of Extraction Cell #1 north wall

Main Plant Deconstruction (Cont.)



Deconstruction of Sample Cell #2

Main Plant Deconstruction (Cont.)



Waste loadout from the Deconstruction of Sample Cell #2

Main Plant Deconstruction (Cont.)



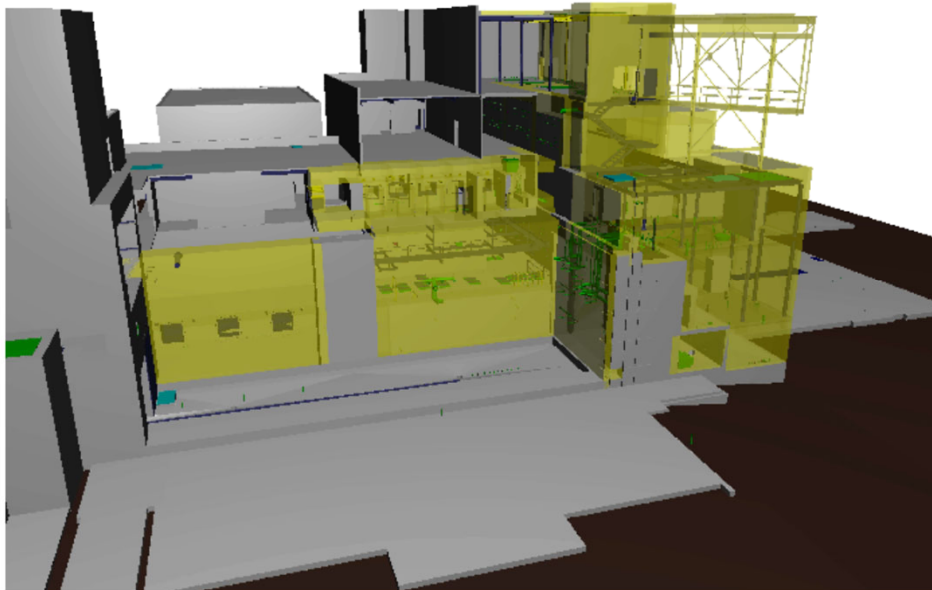
Clearing debris from Sample Storage Cell

Main Plant Deconstruction (Cont.)

Deconstruction on Extraction Cell Room upper east wall



Main Plant Deconstruction (Cont.)



3-D Model of Main Plant Deconstruction
(Completed areas in Yellow)

Waste and Site Operations

- Safely processed and overpacked two more Chemical Process Cell waste containers for shipment in May (*previously processed, overpacked, and shipped two containers*)
- The remaining four High Integrity Containers (HICS) were overpacked and shipped the week of March 18 (*previously overpacked and shipped four HICs*)
- Seven (7) of 12 legacy oversized debris containers have been shipped
 - The remaining five (5) will be overpacked and shipped
 - One has been overpacked in March, remaining four will be overpacked in April, and all will be shipped during the summer



Waste Tank Farm Pumps