

Building a people-first carbon removal field

Ugbaad Kosar, Director of Environmental Justice

April 8, 2024

The Carbon180 logo is located in the bottom left corner. It features a white circular icon with a curved arrow pointing clockwise, followed by the text "Carbon180" in a white sans-serif font. The "180" is highlighted in a vibrant green color.

Carbon180

Carbon180

A new kind of climate NGO on a mission to reverse
two centuries of carbon emissions.

An aerial photograph of a vast agricultural landscape at sunset. The foreground shows a field with distinct rows of crops, possibly corn, in shades of green and brown. The middle ground is a flat expanse of fields stretching to a distant horizon. The sky is a gradient of blue and yellow, with the sun low on the right side, creating a warm, golden glow. The overall scene is peaceful and expansive.

OUR MISSION

Design and champion equitable, science-based policies that bring carbon removal solutions to gigaton scale.

OUR VISION

Eliminate legacy carbon emissions and create a livable climate in which current and future generations can thrive.

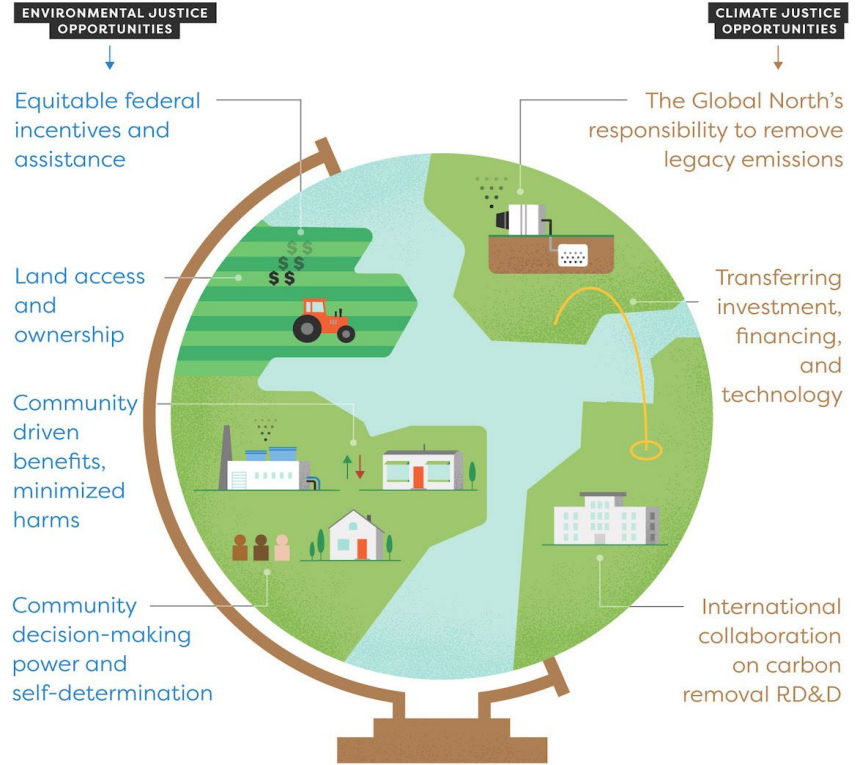
Defining key terms

ENVIRONMENTAL JUSTICE

A concept, a field of research, and a social movement. It's a response to environmental racism, the way in which certain groups (Black, Indigenous, economically disadvantaged) are burdened with a disproportionate number of hazards, pollutants.

CLIMATE JUSTICE

Frames climate change as a human rights and racial justice issue, rather than a purely environmental or physical problem. At its core is acknowledging that climate change disproportionately affects disadvantaged communities.



Benefits beyond climate

Embedding justice and social considerations is necessary to meet our climate goals.



Reparative

How past harms are amended

Distributive

How resources are divided and shared

Procedural

How decisions are made

Why do social and justice considerations matter?

By placing EJ at the center of their business plans, carbon removal companies can demonstrate their commitment to learning from past injustices and set themselves on a path to scale sustainably and with societal support.

—XPRIZE and Carbon180 report

Best practices for embedding social considerations

Early information sharing & continuous outreach

Equity-centered research

Check assumptions about who is an “expert”

Agreements and commitments

Remember:

This is an opportunity, not a roadblock

Thank you!

Ugbaad Kosar, Director of EJ

Feel free to reach out:
ugbaad@carbon180.org

