



PROPOSED SCOPE OF THE SEIS FOR THE WEST VALLEY SITE

LEE GORDON, NYSERDA SEIS
MANAGER

March 2018

Supplemental Environmental Impact Statement (SEIS) for the West Valley Site

- DOE and NYSERDA have determined that the preparation of an SEIS would further the purposes of NEPA and SEQR by including new information and changes since issuance of the 2010 Final EIS.
- This decision is consistent with the commitment in the 2010 Record of Decision and Findings Statement to provide robust and meaningful opportunities for public participation during decommissioning.

Phase 2 Purpose and Need

- DOE:
 - Required by West Valley Demonstration Project Act (WVDP Act) to decontaminate and decommission tanks and facilities used in solidifying the high-level waste, and any material and hardware used in connection with the WVDP
 - License Termination Rule prescribed by the U.S. Nuclear Regulatory Commission (NRC) as the decommissioning criteria for the WVDP

Phase 2 Purpose and Need (cont.)

- NYSERDA:
 - Determine how the State-Licensed Disposal Area and other parts of the property that NYSERDA is responsible for will be managed or decommissioned
 - Intends to pursue termination of the existing NRC license for the Western New York Nuclear Service Center, upon completion of DOE's activities under the WVDP Act



Range of Reasonable Alternatives

- The range of reasonable alternatives:
 - Includes those that would lead to the release of West Valley Site facilities and areas for re-use under unrestricted and restricted conditions as allowed under the License Termination Rule
 - Is informed by analyzing the potential long-term radiological and chemical dose/risk impacts

Alternatives Currently Proposed

- No Action Alternative
 - The No Action Alternative does not meet the purpose and need for agency actions, however analysis of a No Action Alternative is required by NEPA and SEQR and will provide a baseline for comparing impacts of the alternatives
 - No further decommissioning actions after Phase 1 completion
 - Continued monitoring and maintenance of West Valley Site facilities for the foreseeable future, to protect human health and the environment
 - Continued periodic maintenance activities during a period of active institutional controls (e.g., replacing permeable treatment wall media, replacing landfill covers)

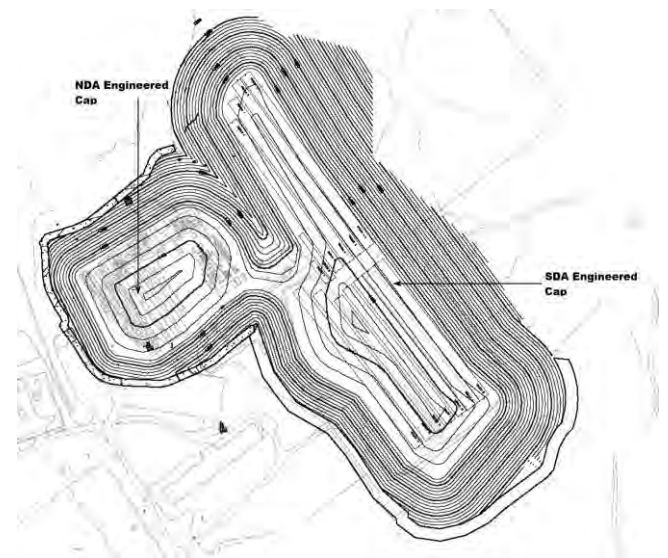
Alternatives Currently Proposed (cont.)

- Sitewide Removal Alternative
 - Removal of site facilities and contaminated soil, sediment, and groundwater to meet NRC LTR criteria for unrestricted release of the WNYNSC
 - Characterization, packaging, and shipment off-site of radioactive, hazardous, industrial, and mixed waste for disposal
 - Storage on-site of any waste generated that currently has no off-site disposal option until an appropriate off-site facility is available



Alternatives Currently Proposed (cont.)

- Sitewide Close-in-Place Alternative
 - Closure in place of most Phase 2 facilities and release of large areas of the WNYNSC for unrestricted use
 - Management of major facilities and sources of contamination (such as the Waste Tank Farm, NDA, and SDA) at their current locations



Alternatives Currently Proposed (cont.)

- Sitewide Close-in-Place Alternative
 - Isolation of residual radioactivity in facilities with larger inventories of long-lived radionuclides using specially designed structures and barriers designed to:
 - Meet regulatory requirements to retain hazardous and radioactive constituents
 - Resist long-term degradation and discourage inadvertent intrusion

Alternatives Currently Proposed (cont.)

- Sitewide Close-in-Place Alternative (cont.)
 - Allow facilities with less contamination (such as the North Plateau Groundwater Plume or the Cesium Prong) to naturally attenuate
 - Requires long-term stewardship for closed-in-place facilities and their buffer areas and for facilities allowed to naturally attenuate

Alternatives Currently Proposed (cont.)

- Hybrid Alternatives
 - May contain elements of any or all of the other alternatives
 - Represent points along the alternatives spectrum between the Sitewide Close-in-Place Alternative and the Sitewide Removal Alternative, with elements of each
 - May include complete or partial removal of certain facilities and close-in-place for the remaining facilities.
 - Potential alternatives suggested by the public during the scoping period

The Preferred Alternative

- A detailed analysis of the impacts and costs of each alternative will be performed
- Through this evaluation, DOE and NYSERDA will identify a preferred alternative
- The Draft SEIS (expected in late 2020) will identify the preferred alternative and an explanation and rationale for its selection