

45VH2-GREET

Frequently Asked Questions

January 2024

Introduction

45VH2-GREET is the model that has been adopted by the U.S. Department of the Treasury to determine emissions rates for purposes of the Clean Hydrogen Production Tax Credit under Title 26 of the U.S. Code, Section 45V. The 45VH2-GREET 2023 user manual describes the methodology used by 45VH2-GREET 2023 to calculate life cycle greenhouse gas (GHG) emissions of hydrogen production under a well-to-gate system boundary and provides instructions on how the model should be used. The [45VH2-GREET 2023 user manual](#) provides instructions on use of the model.

Frequently asked questions (FAQ) and answers in this document pertain only to use of the 45VH2-GREET model. Questions about the 45V tax credit and eligibility for the tax credit should be directed to the [Internal Revenue Service](#).

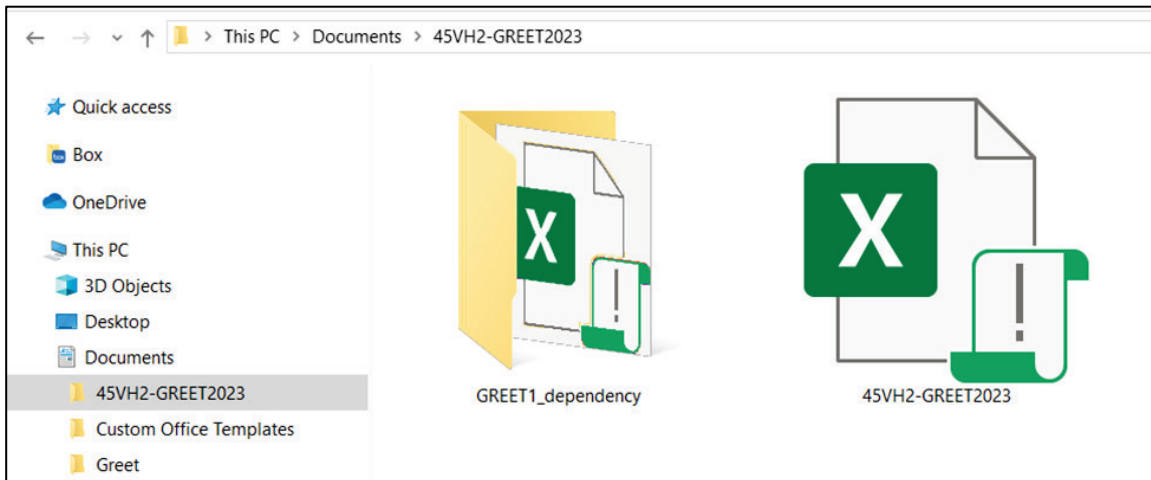
FAQs will be updated on a continual basis. If you have questions about use of the 45VH2-GREET model, visit the [GREET website](#) for contact information.

Frequently Asked Questions

1. Do I need to open the “GREET1_2023” excel file in the “GREET1_dependency” folder?

Users should only open the “45VH2-GREET2023” excel file. The macros will take care of opening and setting up the link between the two files.

2. Do I need to move the “GREET1_2023” excel file out of the “GREET1_dependency” folder?



Extracting the “45VH2-GREET2023” zip file creates a “45VH2-GREET2023” excel file and a GREET1_dependency folder which contains the “GREET1_2023” excel file. Please do not move the “GREET1_2023” excel file out of the GREET1_dependency folder.

3. Can I rename the files and folders located in the “45VH2-GREET” folder?

We do not recommend changing the names of any files or folders that are part of the unzipped file system, especially the “GREET1_dependency” folder, and “GREET1_2023” excel file.

4. Can I replace the “GREET1_2023” excel file with an older GREET file?

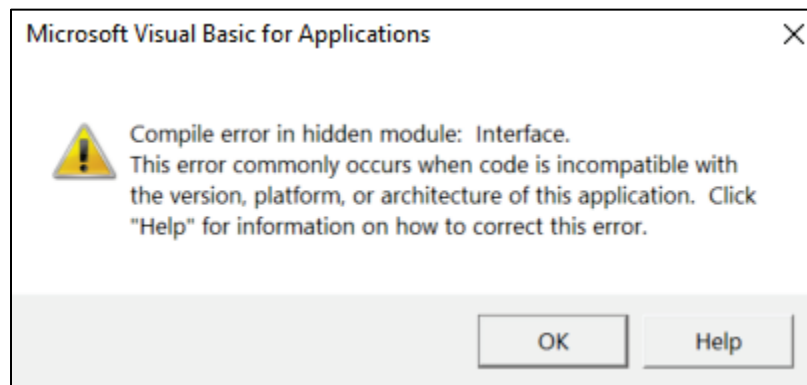
Please do not replace the “GREET1_2023” excel file that comes with the zip file. Doing so may cause errors and inconsistent results.

5. The “45VH2-GREET2023” excel file does not allow me to enter process information and no error messages are observed.

This could be due to several reasons:

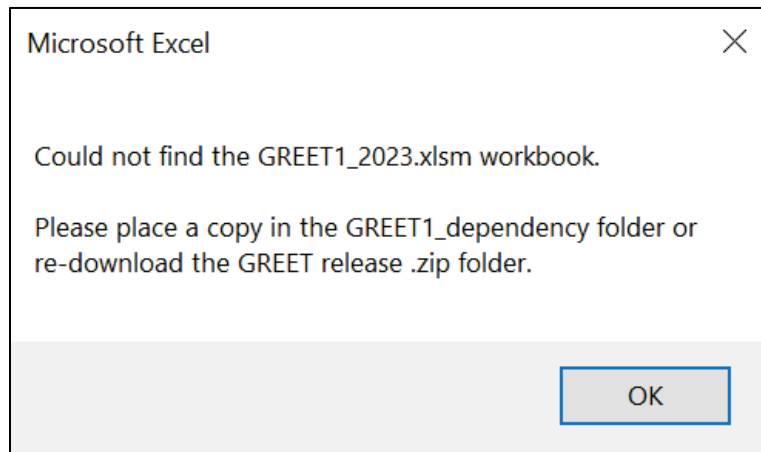
- i. Please ensure that the “45VH2-GREET2023” excel file and the “GREET1_dependency” folder have been extracted into a local drive (e.g., C: or D: drive) and are being run from that drive. The security settings in some cloud drives may prevent the execution of macros. Close all open instances of “45VH2-GREET” and “GREET1_2023” before trying again.
- ii. Please verify that both the “45VH2-GREET2023” and the “GREET1_2023” excel files (located in the “GREET1_dependency” folder) are unblocked, and macros are enabled. Close all open instances of “45VH2-GREET” and “GREET1” before trying again.
- iii. Please ensure that another file with the filename “GREET1_2023” is not open. This will prevent the “45VH2-GREET2023” file from opening the GREET1 file required to run its calculations. We recommend closing both files and then opening the “45VH2-GREET2023” excel file again.

6. After I put my data into “45VH2-GREET2023” and click the “Calculate” button, Excel displays the popup error: “Compile error in hidden module: Interface.”



This is because the initial version of 45VH2-GREET was designed for the 64-bit version of Office 365, and the user is using the 32-bit version. The latest version of 45VH2-GREET currently online is compatible with both the 32-bit and 64-bit versions.

7. I get the error message “Could not find the GREET1_2023.xlsm workbook”.



This error is due to the excel macro not being able to locate the “GREET1_2023” file in the “GREET1_dependency” folder. Please ensure that the “45VH2-GREET2023” excel file and the “GREET1_dependency” folder are in the same folder and that the “GREET1_2023” excel file is in the “GREET1_dependency” folder. In addition, verify that the file and folder names are correctly named.

8. After putting all my process data into the “45VH2-GREET2023” excel file, clicking “Calculate” results in #NAME? errors.

Total	Units
#NAME?	g/MMBtu H2
#NAME?	g/MMBtu H2
#NAME?	g_CO2e/MMBtu H2
#NAME?	kg_CO2e/kg H2

Please ensure that the excel version being used is Office 365 or Microsoft Office 2021. “45VH2-GREET” is not compatible with older versions of Microsoft Excel (Excel 2019, Excel 2016, etc.).

For more information, visit energy.gov/eere/greet

January 2024