



U.S. DEPARTMENT OF  
**ENERGY**

Office of  
Indian Energy

# Taholah Relocation Integrated Energy System

Michael Cardwell, FAICP  
Senior Urban & Regional Planner

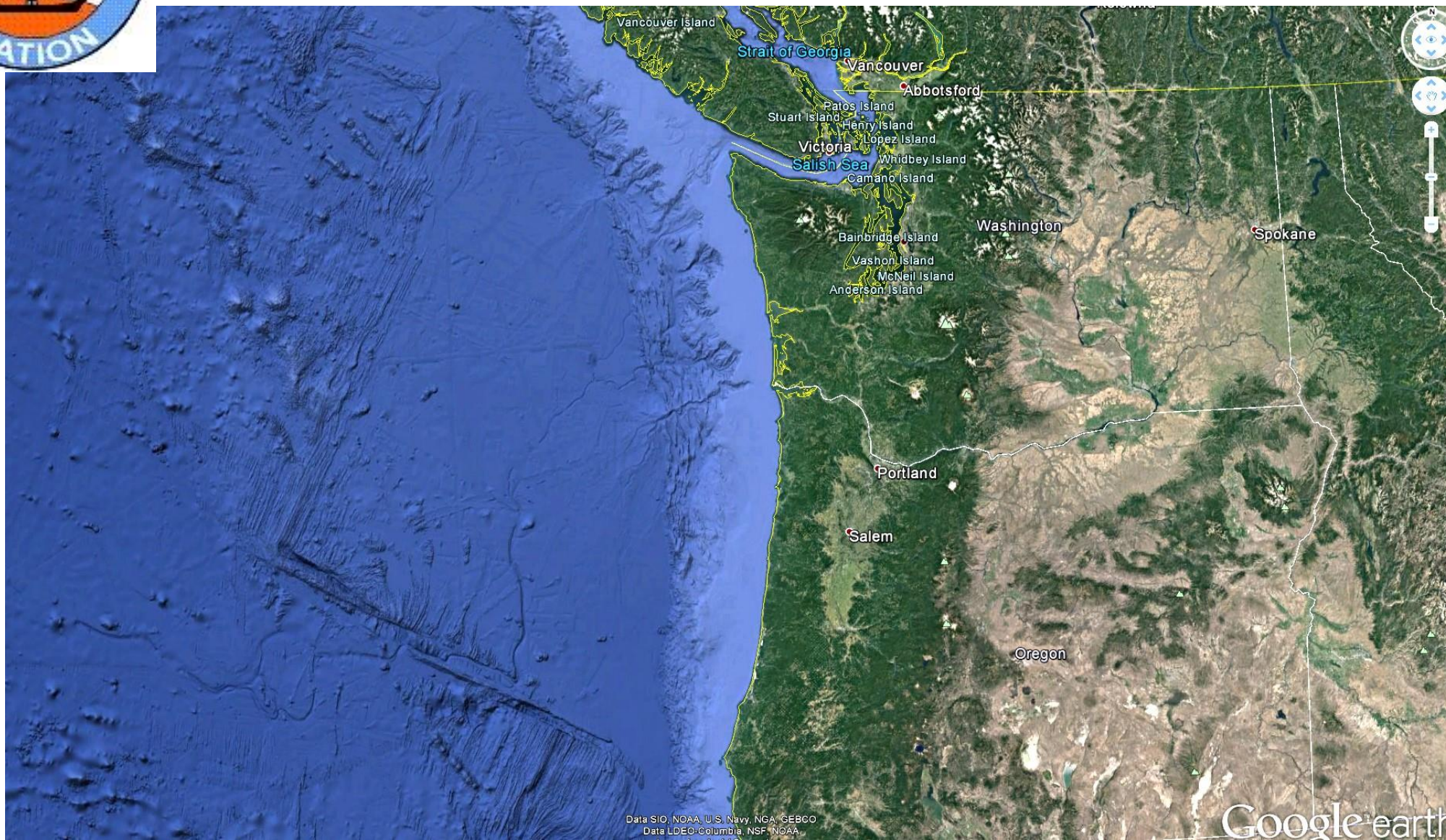






U.S. DEPARTMENT OF  
**ENERGY**

Office of  
Indian Energy



Data SIO, NOAA, U.S. Navy, NGA, GEBCO  
Data LDEO-Columbia, NSF, NOAA

Google earth







U.S. DEPARTMENT OF  
**ENERGY**

Office of  
Indian Energy

**OLYMPIC COAST  
NATIONAL MARINE SANCTUARY**

**Contact Information**  
115 East Railroad Ave.,  
Suite 201,  
Port Angeles, WA 98302  
(360) 457-6022  
olympiccoast.noaa.gov

**Habitats**

- Rocky headlands
- Sandy beaches
- Tidalpools
- Kelp forests
- Seagrass & siltens
- Polyps, open ocean
- Offshore banks
- Submarine canyons

**Key Species**

- Tufted Puffin
- Common murre
- Bald Eagle
- Northern sea otter
- Harbor seal
- California gray whale
- Killer whale (Orca)
- Humpback whale
- Sulfur sheep
- Giant kelp
- Salmon
- Rockfish



**Map Key**

- National Marine Sanctuary
- National Park
- Tribal Reservations
- Government Land
- Marine Sanctuary Office
- Sanctuary Information
- Other Park



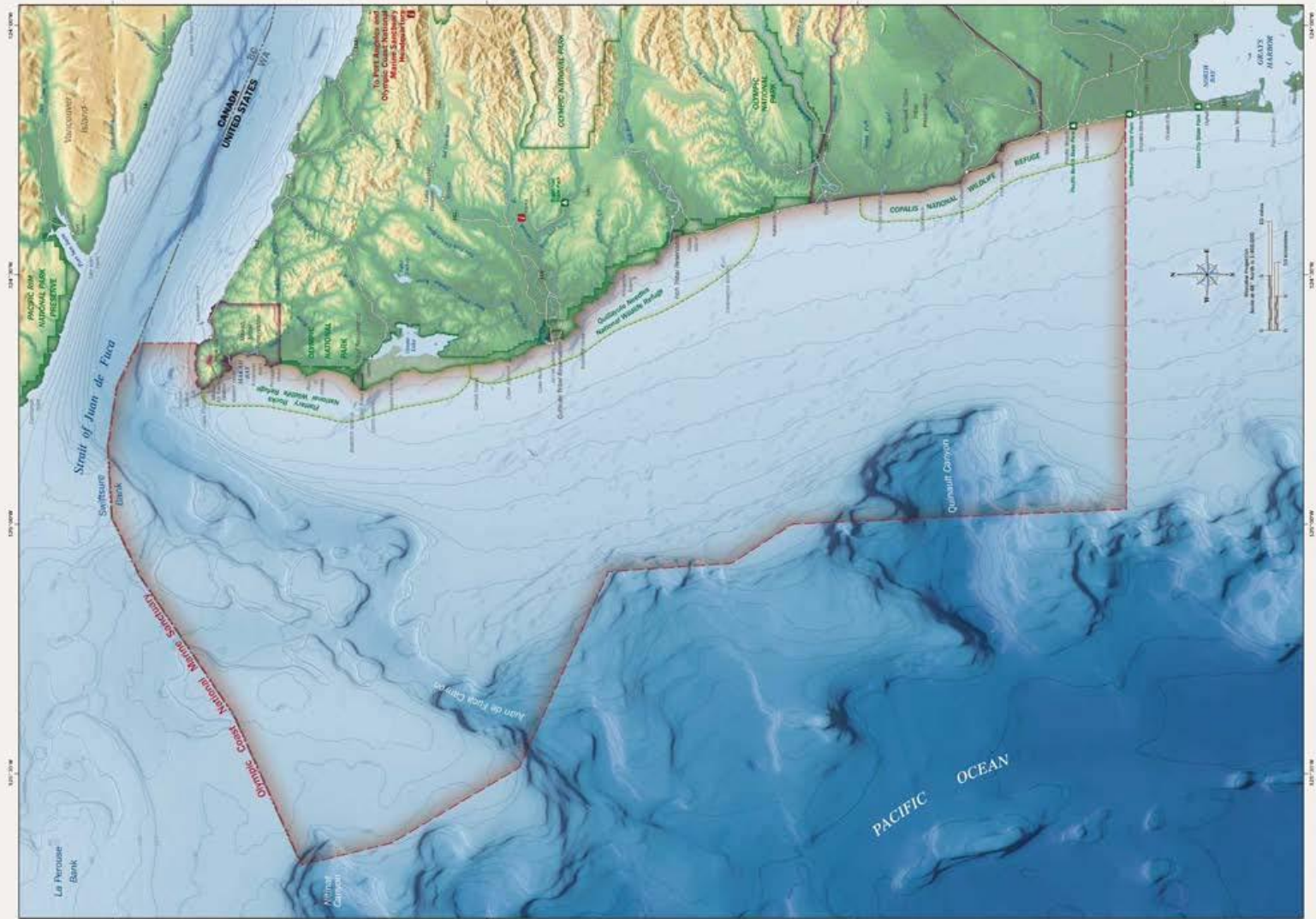
**Location**

From Cape Flattery to the mouth of the Copalis River,  
on Washington's outer coast

**OLYMPIC COAST  
NATIONAL MARINE SANCTUARY**

**Protected Area**

3,310 square miles  
**Designation**  
July 1994





U.S. DEPARTMENT OF  
**ENERGY**

Office of  
Indian Energy







U.S. DEPARTMENT OF  
**ENERGY**

Office of  
Indian Energy







U.S. DEPARTMENT OF  
**ENERGY**

Office of  
Indian Energy







U.S. DEPARTMENT OF  
**ENERGY**

Office of  
Indian Energy







U.S. DEPARTMENT OF  
**ENERGY**

Office of  
Indian Energy







U.S. DEPARTMENT OF  
**ENERGY**

Office of  
Indian Energy







U.S. DEPARTMENT OF  
**ENERGY**

Office of  
Indian Energy







U.S. DEPARTMENT OF  
**ENERGY**

Office of  
Indian Energy







U.S. DEPARTMENT OF  
**ENERGY**

Office of  
Indian Energy

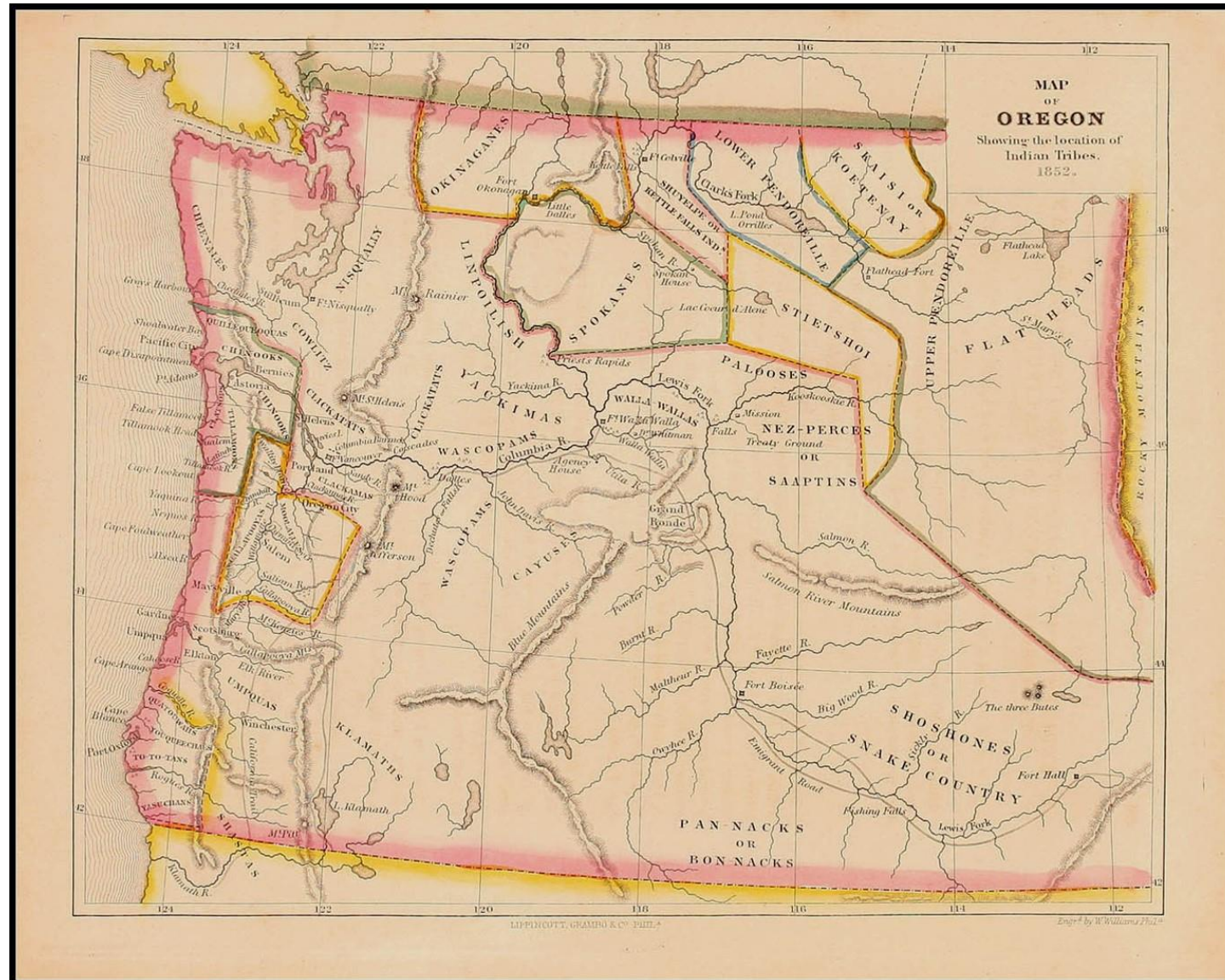






U.S. DEPARTMENT OF  
**ENERGY**

Office of  
Indian Energy







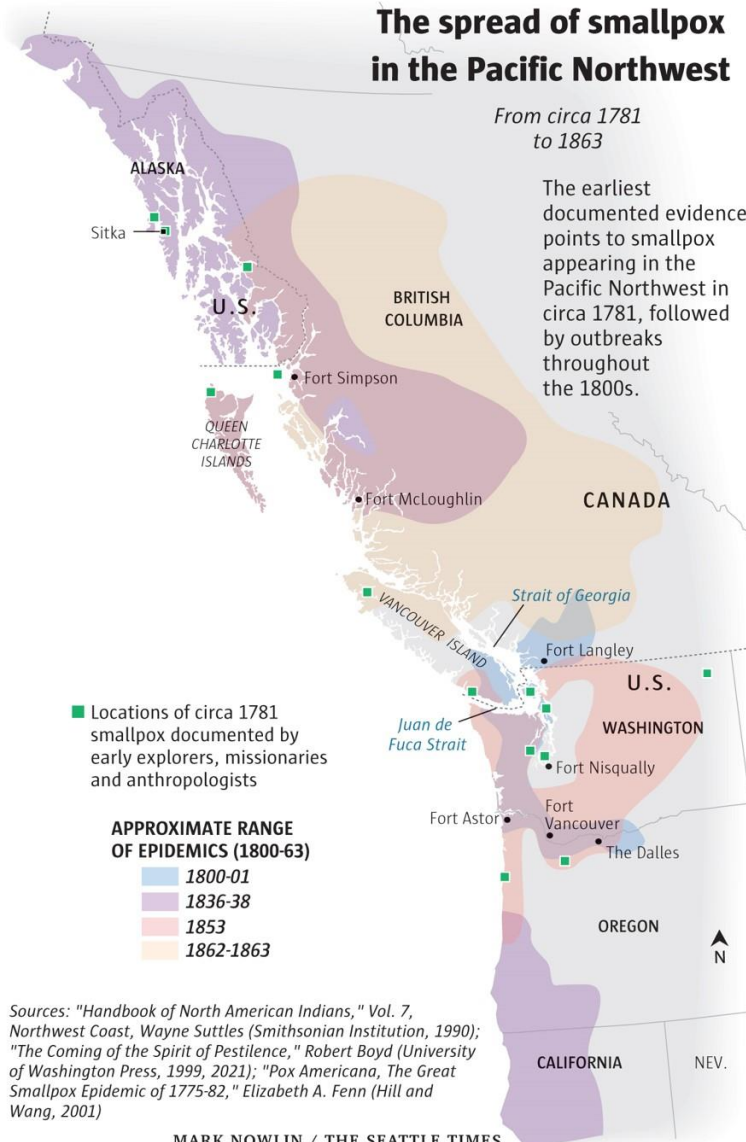
U.S. DEPARTMENT OF  
**ENERGY**

Office of  
Indian Energy

## The spread of smallpox in the Pacific Northwest

From circa 1781 to 1863

The earliest documented evidence points to smallpox appearing in the Pacific Northwest in circa 1781, followed by outbreaks throughout the 1800s.



Sources: "Handbook of North American Indians," Vol. 7, Northwest Coast, Wayne Suttles (Smithsonian Institution, 1990); "The Coming of the Spirit of Pestilence," Robert Boyd (University of Washington Press, 1999, 2021); "Pox Americana, The Great Smallpox Epidemic of 1775-82," Elizabeth A. Fenn (Hill and Wang, 2001)

MARK NOWLIN / THE SEATTLE TIMES







U.S. DEPARTMENT OF  
**ENERGY**

Office of  
Indian Energy

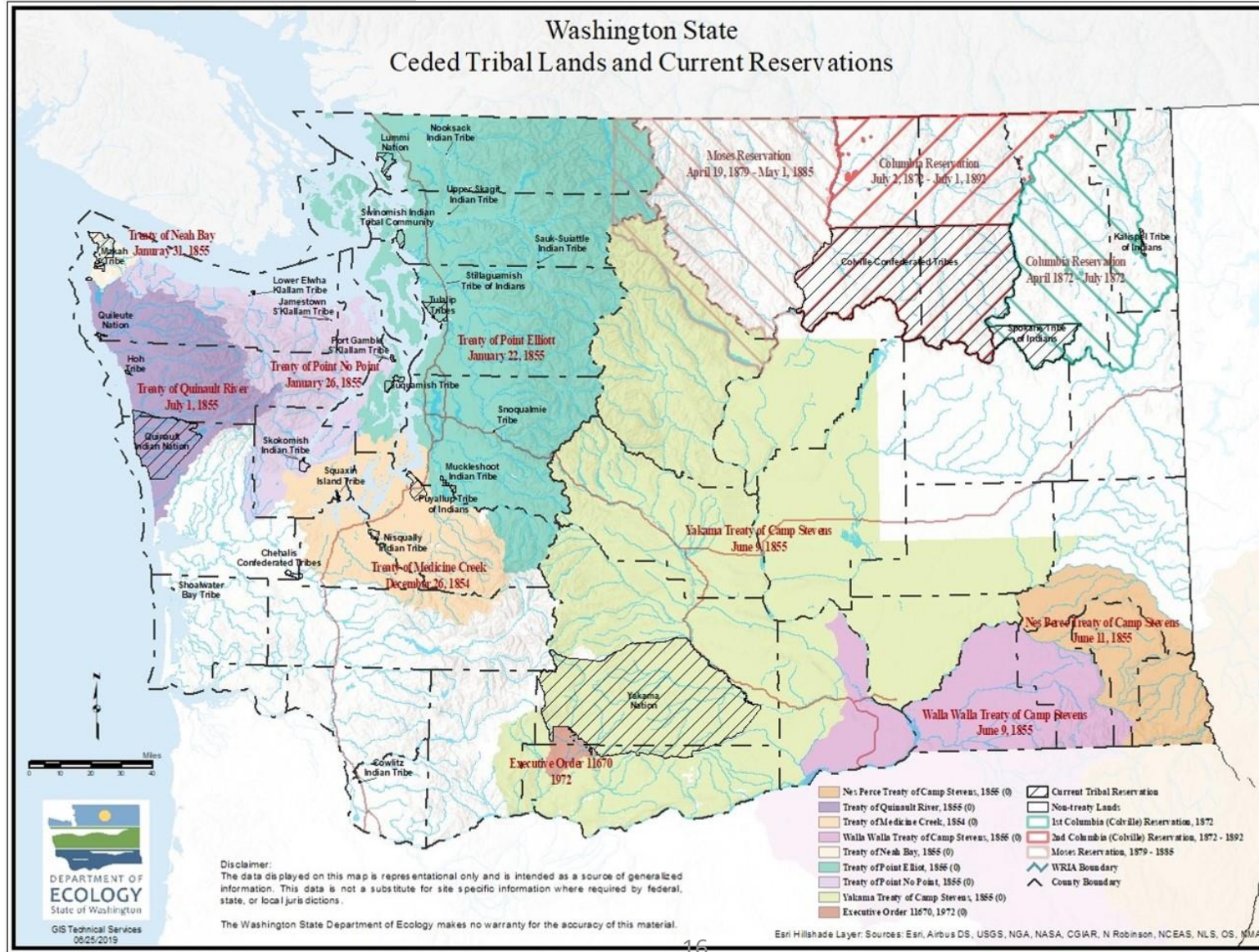






U.S. DEPARTMENT OF  
**ENERGY**

Office of  
Indian Energy







U.S. DEPARTMENT OF  
**ENERGY**

Office of  
Indian Energy







U.S. DEPARTMENT OF  
**ENERGY**

Office of  
Indian Energy

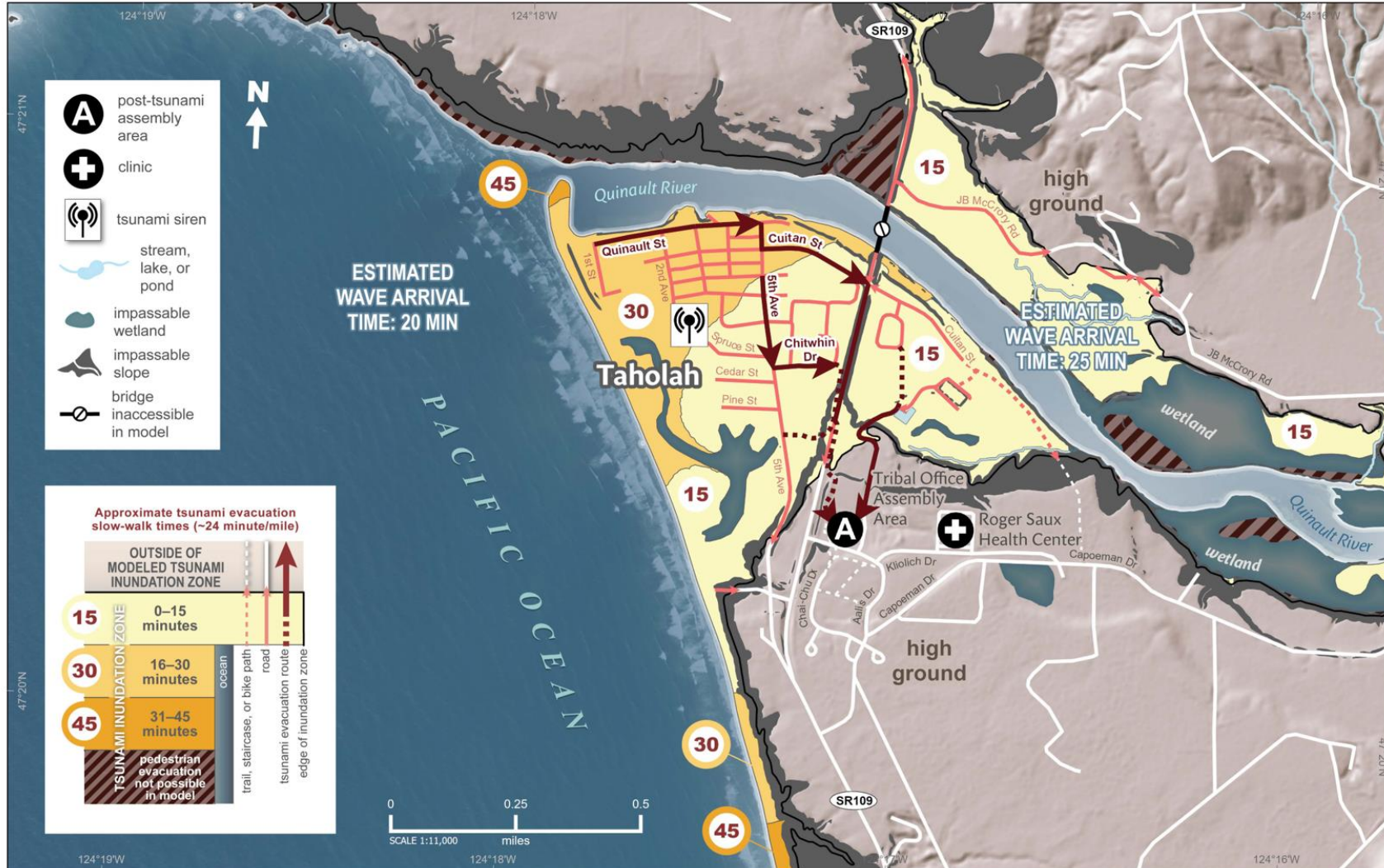






U.S. DEPARTMENT OF  
**ENERGY**

Office of  
Indian Energy







U.S. DEPARTMENT OF  
**ENERGY**

Office of  
Indian Energy







U.S. DEPARTMENT OF  
**ENERGY**

Office of  
Indian Energy



**Village Concept - Jan 2023**

Taholah Village Relocation Master Plan Project







U.S. DEPARTMENT OF  
**ENERGY**

Office of  
Indian Energy







U.S. DEPARTMENT OF  
**ENERGY**

Office of  
Indian Energy







U.S. DEPARTMENT OF  
**ENERGY**

Office of  
Indian Energy







U.S. DEPARTMENT OF  
**ENERGY**

Office of  
Indian Energy







U.S. DEPARTMENT OF  
**ENERGY**

Office of  
Indian Energy







U.S. DEPARTMENT OF  
**ENERGY**

Office of  
Indian Energy







U.S. DEPARTMENT OF  
**ENERGY**

Office of  
Indian Energy

