

# Dry Creek Rancheria Band of Pomo Indians

---

- Ancestral lands were in Russian River Valley near Healdsburg, CA
- 1315 Tribal Members. Living primarily in Sonoma, Lake, and Mendocino Counties
- Tribal Rancheria on steep rugged land outside Geyserville. Not suited for housing development.















# Dry Creek Rancheria Cultural Values

- Family is the most important thing
- Get along with your neighbors
- Be generous
- Leaders rise to and maintain authority by serving their people
- Sustainable living – “This land was made for us, and we were made for this land”

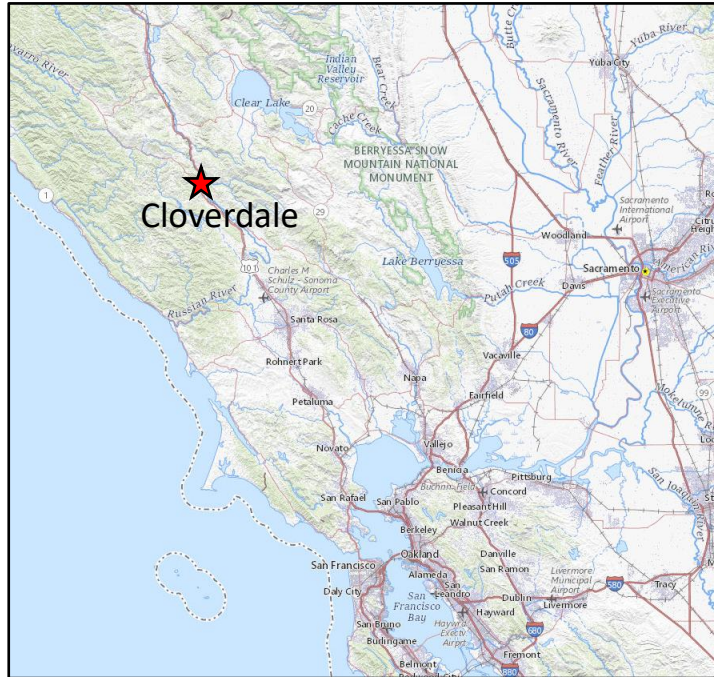




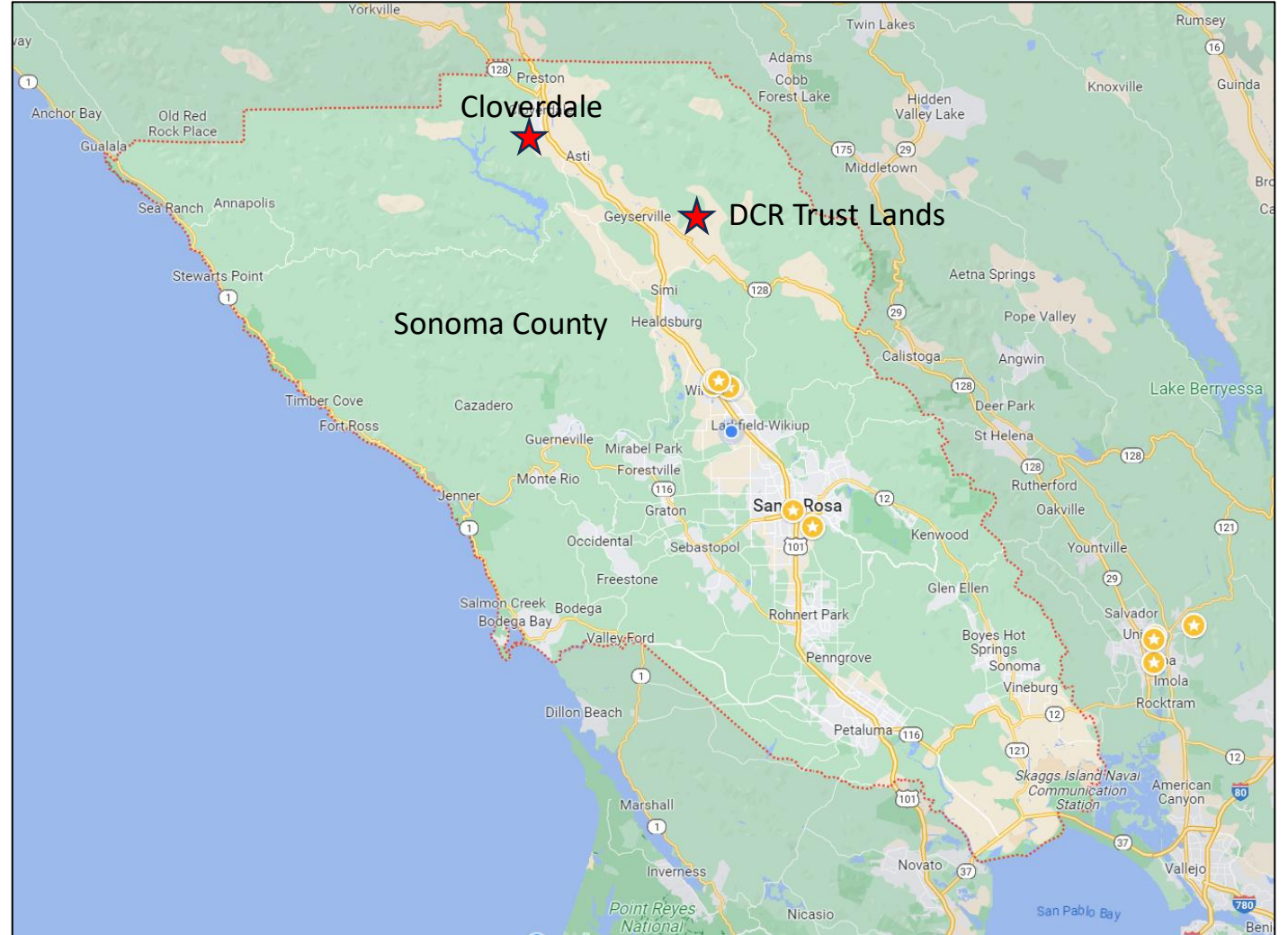


# Location Map

- Cloverdale, Sonoma County, CA



Northern California



Sonoma County





# Aerial Photo

Proposed Annexation Area 



LACO



# Bi'Du Khaale Senior Housing

## Project Description

- 29 Acres
- 25 Units
  - 17 Two-Bedroom Homes
  - 7 Three-Bedroom Homes
  - 1 Two-Bedroom Manager's Unit
- Community Center – 2975 sq ft
- Rooftop Solar PV; battery storage
- IBT
- Trails
- Open Space





# Architectural Plans



Unit A1 – Garage Front



Unit A2 – Garage Front



Unit B1 – Garage Front



Unit A1 – Garage Rear



Unit B2 – Garage Front

## Affordable Homes

- 24-Units
- 2-Bedroom, 1-Bathroom
- 1-Car Garage
- 1,176 – 1,182 sf

## Manager's Unit

- 2-Bedroom, 1-Bathroom
- 1-Car Garage
- Private Office
- 1,319 sf





# Landscape Architecture

## Site Plan

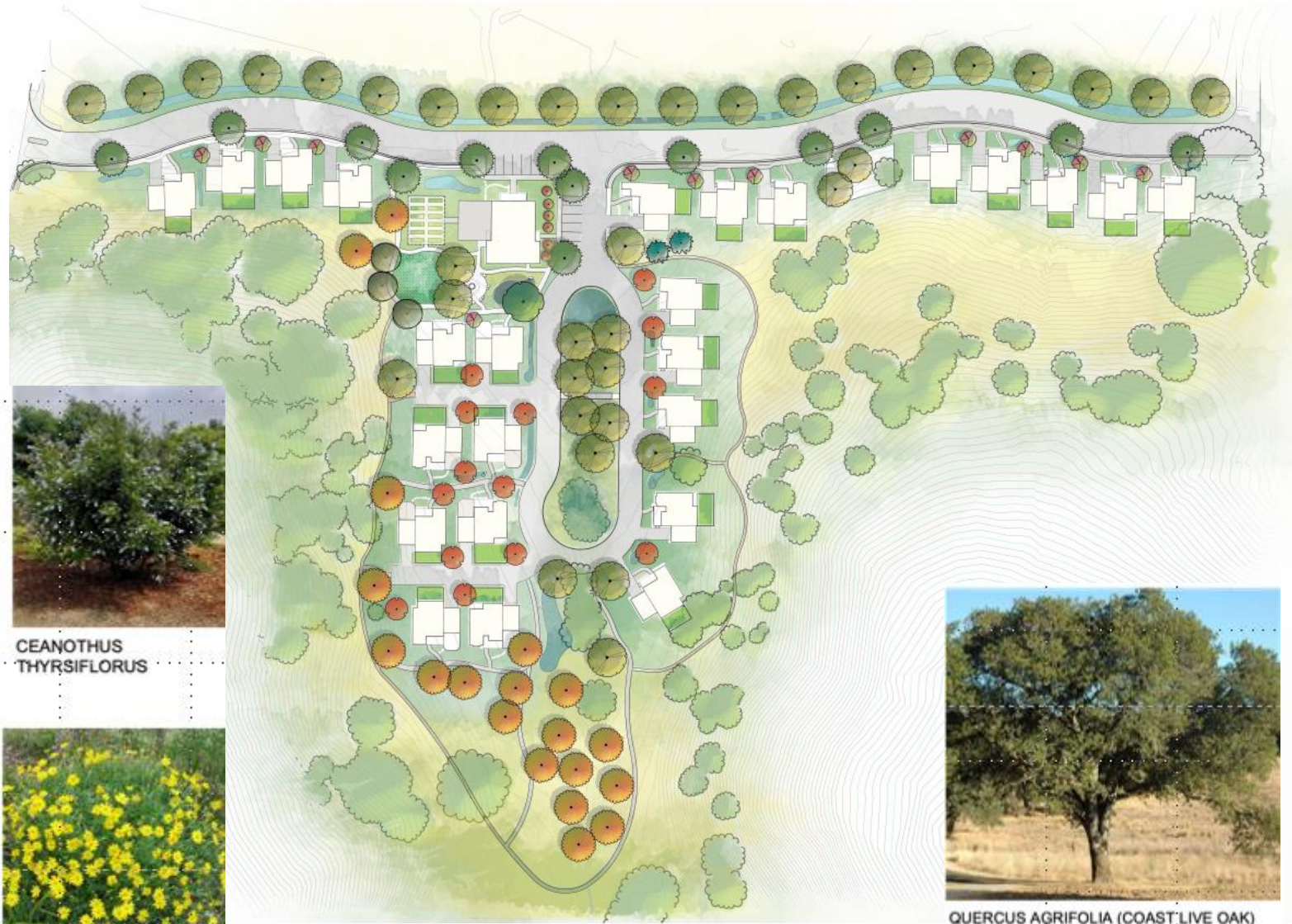
- Tree Canopy Cover
- Preserve Oak Woodland
- Preserve Natural Stream Area
- Nature Based Stormwater Design
- Reduced Paving

## Fire & Water Wise Features

- Drip Irrigation
- Rain Gardens
- Paved Areas Drain to Planting Area
- Drought Adapted Plants
- Non-Combustible Zone
- Eliminate Ladder Fuels

## Native & Drought Resistant Plantings

- Predominantly Native to Site
- Wildlife Friendly
- Trees Paired with Rain Gardens
- Plantings Grouped by Hydrozone
- Pollinator & Bird Friendly Plants



CEANOTHUS  
THYRSIFLORUS



ERIOPHYLLUM LANATUM



QUERCUS AGRIFOLIA (COAST LIVE OAK)





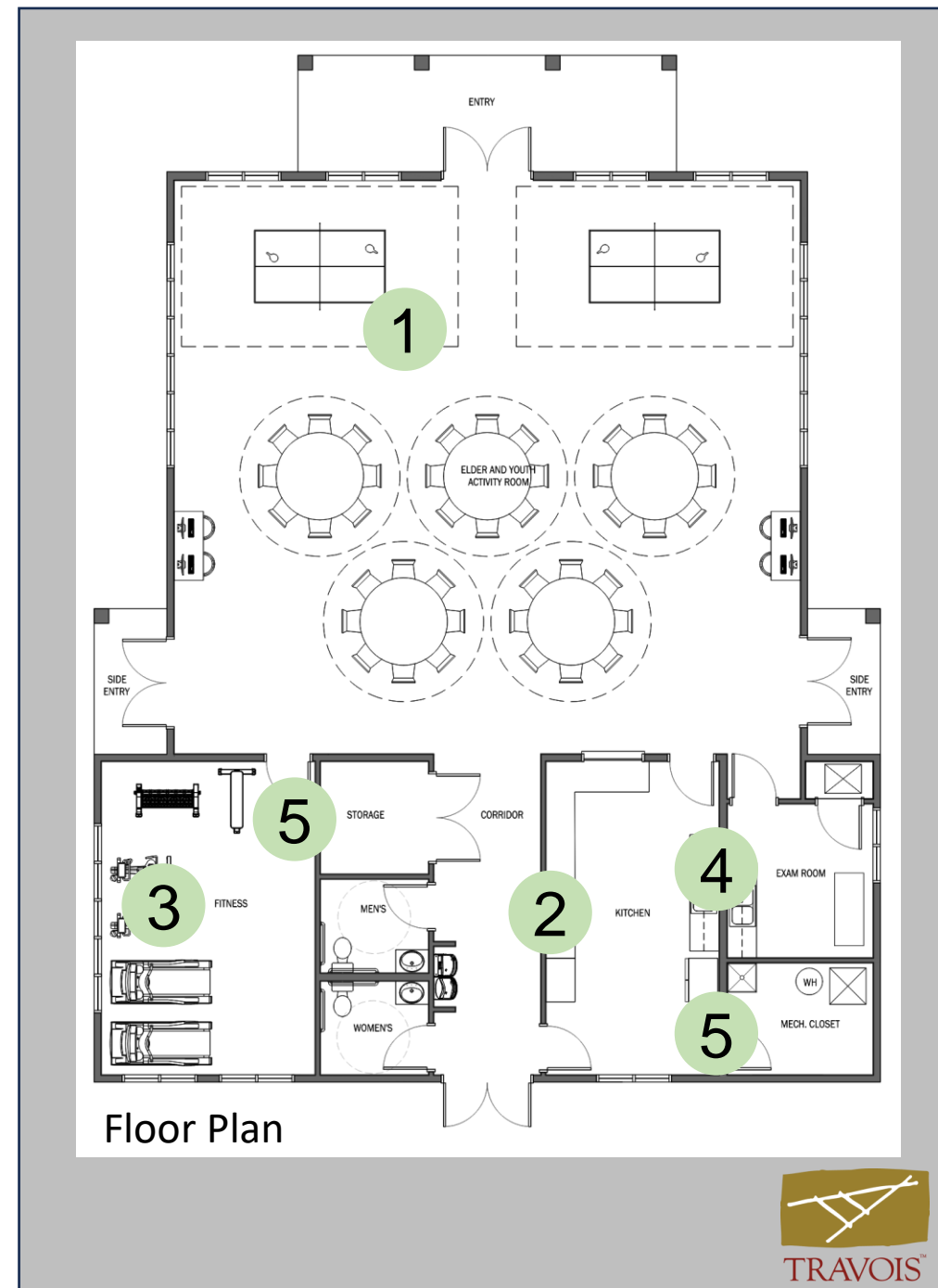
# Community Center



Front Perspective

## Community Center – 2,975 sf

1. Multi-use Assembly Area
2. Kitchen
3. Exercise Room
4. Private Office - Non-clinical uses
5. Mechanical & Storage rooms



Floor Plan



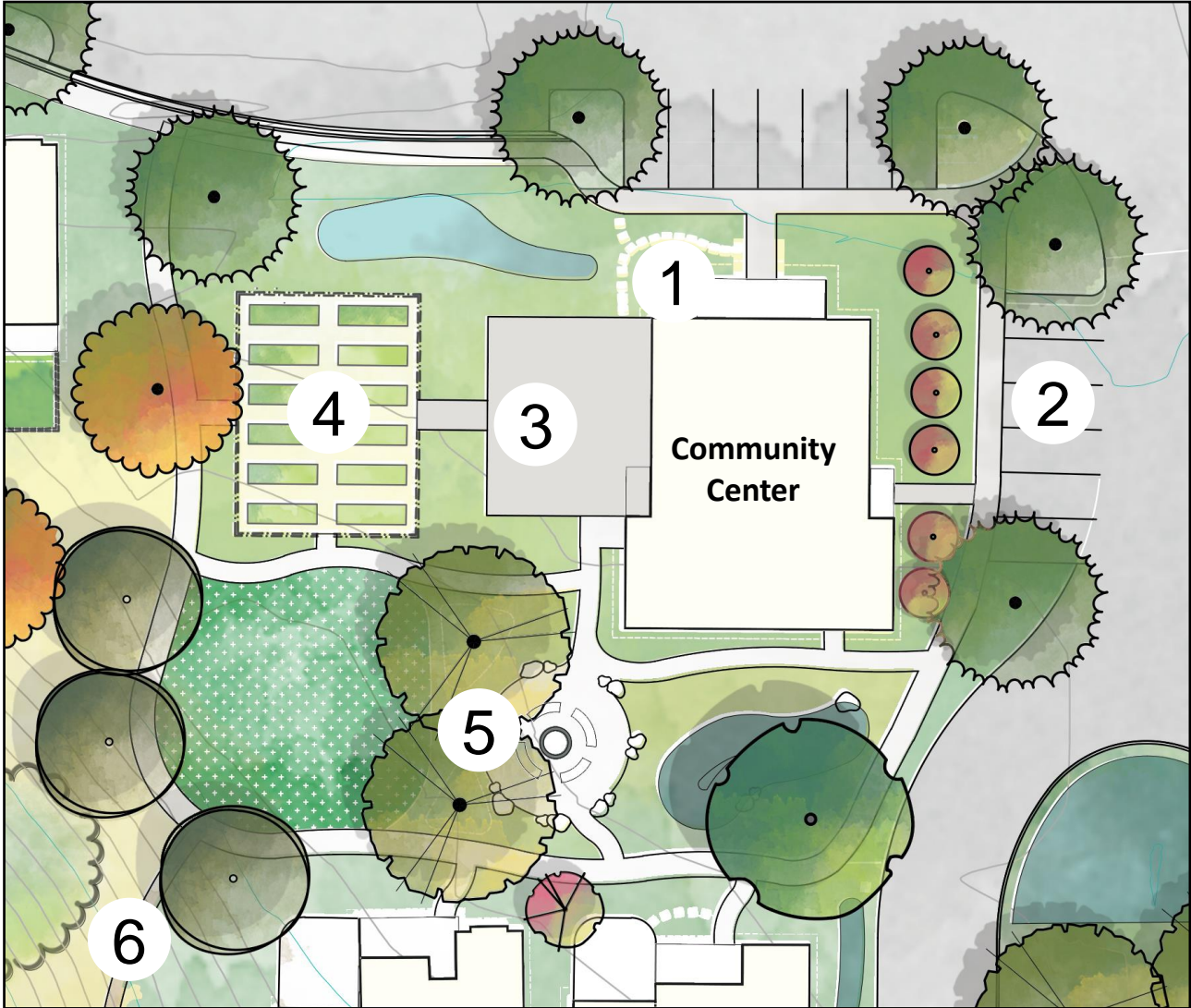


# Community Center

- 1. Main Entry
- 2. EV Charging Station
- 3. Covered Patio
- 4. Community Garden
- 5. Outdoor Gathering Area and Fire Circle
- 6. Connection to Trails & Paths



Outdoor Gathering Area & Fire Circle





# Construction

Unit Framing Begins (Feb – Sept 2023)



LACO





























**Our mission is to build community-powered solutions to advance economic and environmental justice through renewable energy. We serve as trusted advisors and technical experts. We are here to listen, serve and co-create.**



# **GRID ALTERNATIVES**

---

**North Coast**

---

- Direct solar installation & technical assistance
- Backup Battery installation
- Workforce development
- Indigenous Single Family, Multi Family, Community Solar
- Off grid systems



# SCOPE OF WORK: GEOGRAPHY

Out of 25 Tribes - worked with 19 in region

Total Population - 458,887

Total Area- 10,000 square miles

Over 200 projects with tribes

Total Lifetime kWh production  
41,052,010.34

Total Expected Net Lifetime  
Savings \$9,725,890.33

## Our small, but mighty office located in Willits, CA 3.5 Northern Counties. (PG&E Territory)





# SOLAR + STORAGE

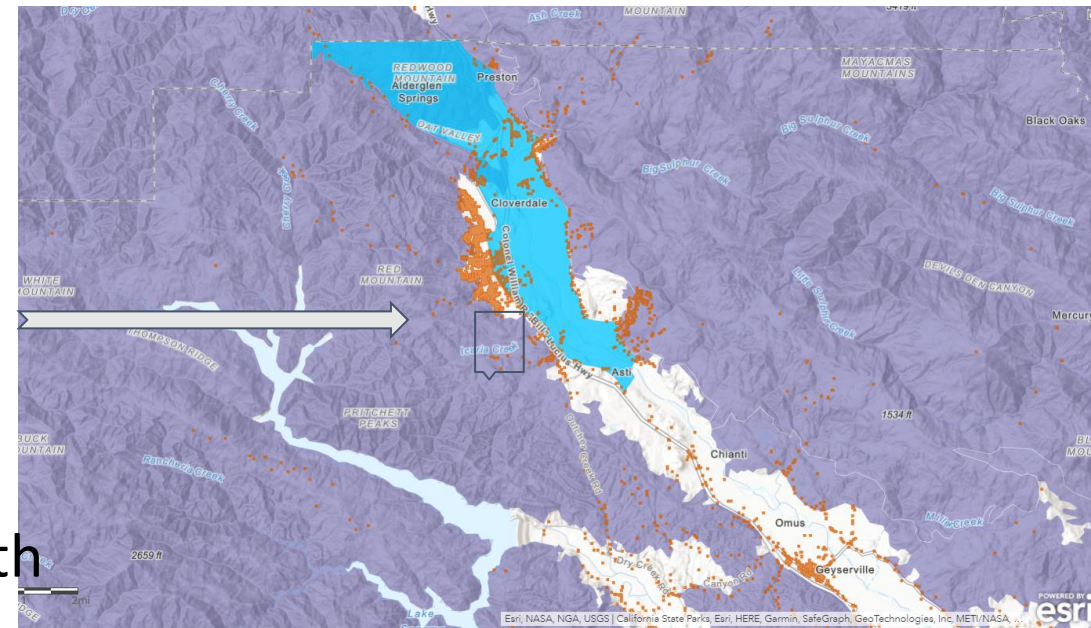
- ★ 5.4 kw PV + 20 kWh
- ★ Batteries fill in one day
- ★ 90% Energy Offset



- Self Consumption
- Time of Use-avoided rate charges
- Emergency Backup

On the edge of high fire threat zone

Purple-Tier 3 Fire  
Orange-PSPS events  
Blue-Census tracts with  
a presumed resale





# Bi'du Khaale Solar

## IMPACTS:

\$1,245,400 lifetime savings

60,705 seedlings planted for 10 years

3,671 of metric tons of CO2 avoided emissions

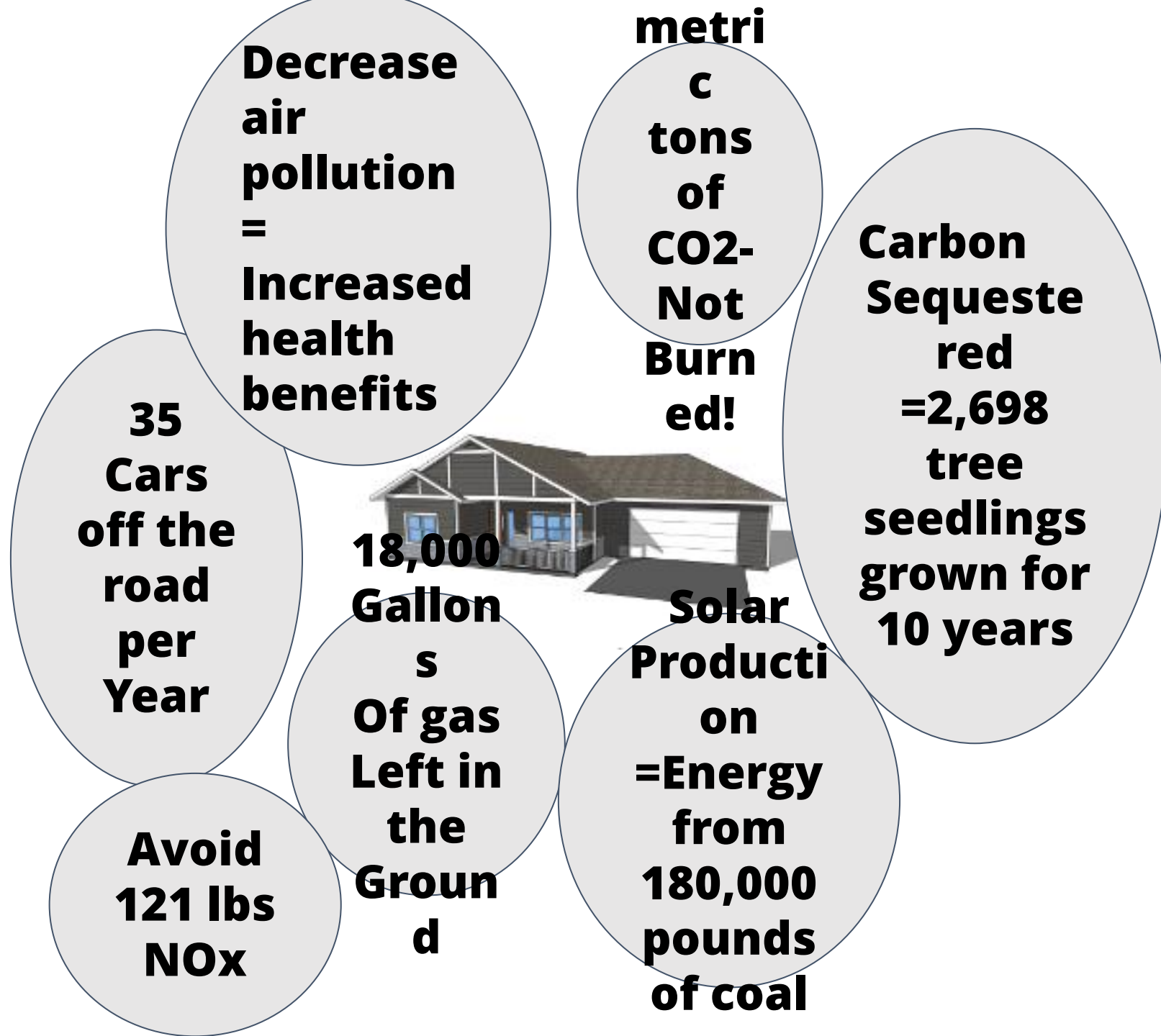






# ENVIRONMENTAL IMPACTS

Greenhouse Gas Calculator:  
<https://www.epa.gov/energy/greenhouse-gas-equivalencies-calculator>





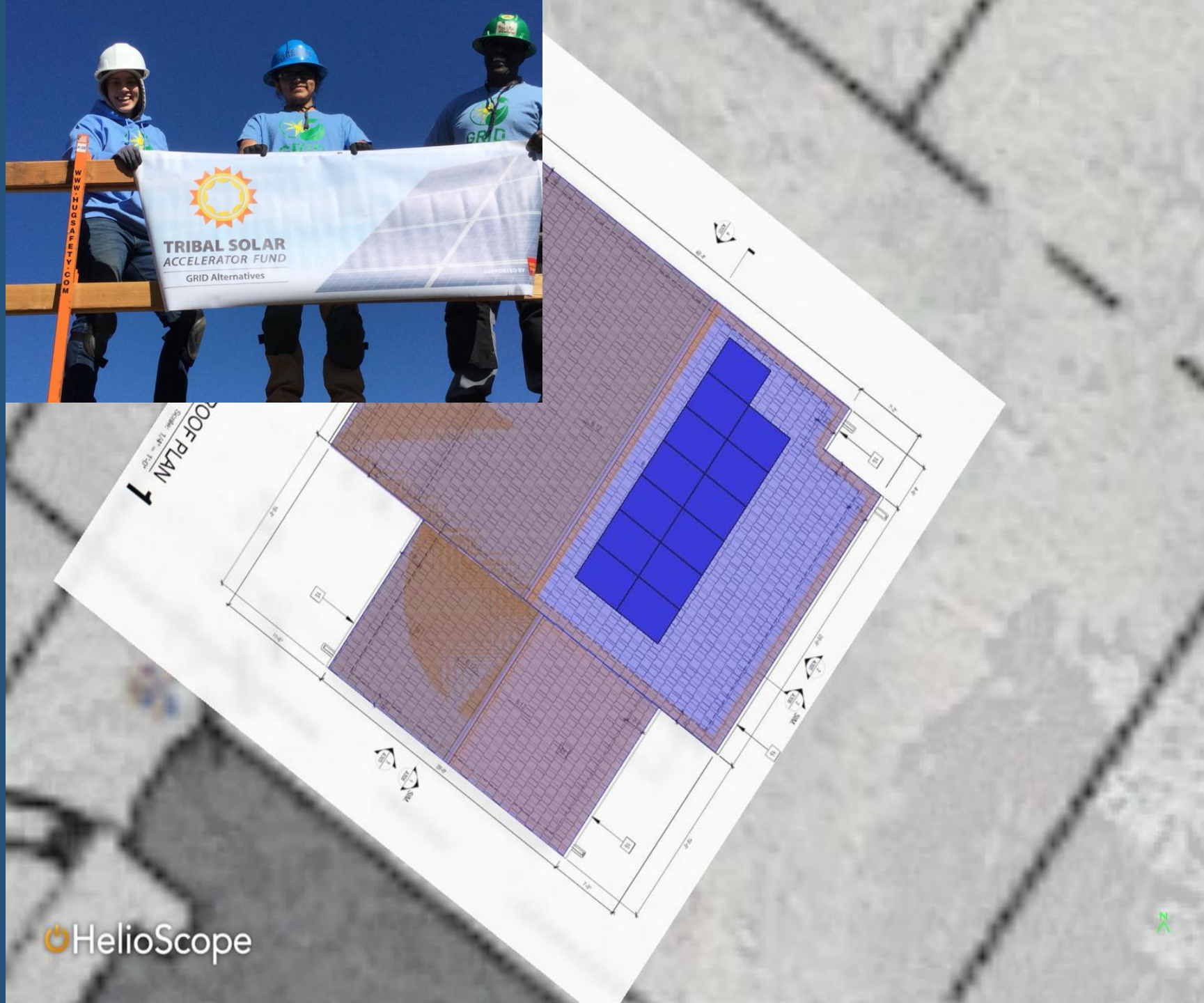


# FINANCIAL IMPACTS:

8.6 MWh  
Production Yearly

80% Annual Bill  
Reduction

~\$2,000 Savings Per  
Tenant/Year





# Solar Installation Basic Training (IBT) & Hands-on Outcomes for Trainees



- 40 hours paid online IBT certification
- Paid hands-on experience on
- OSHA 10 certification

## **Skills Learned:**

- Job Site Safety
- Fall Protection
- Array Layout & Racking
- Modules & Microinverters
- Electrical Safety
- Electrical Layout and Mounting
- Conduit Bending
- Conduit Installation
- Electrical Wiring
- Monitoring and Communication







## Meet Trainee Elsa:



### **Meet Elsa:**

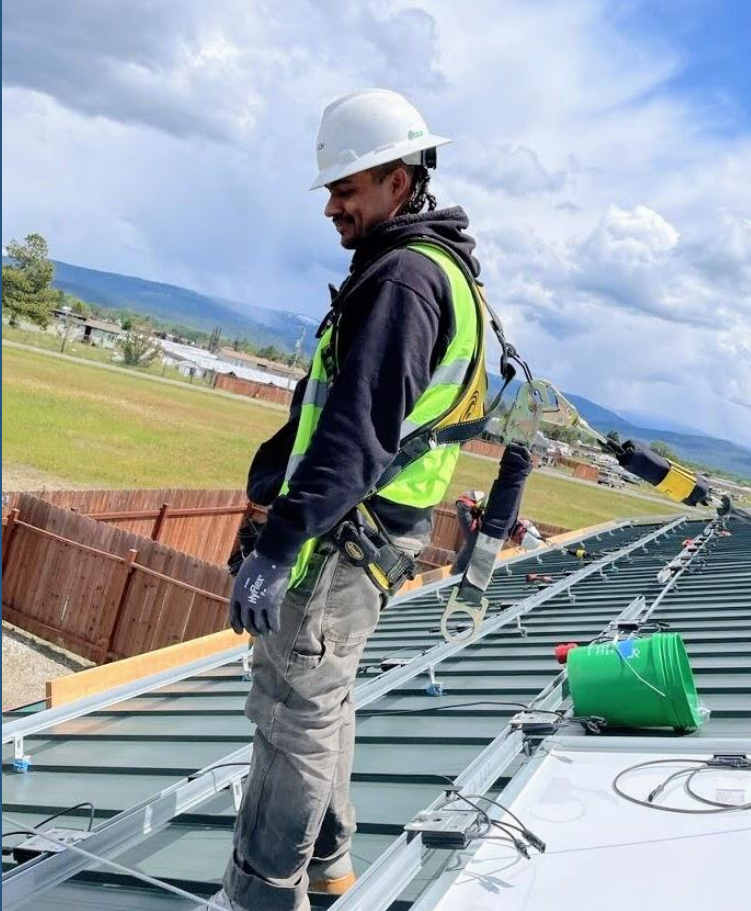
Dry Creek Trainee who has completed the online Solar Installation Basic Training (IBT) Certification:

I like to learn something new each day and when I heard about the opportunity to enroll in the GRiD program through my tribal office I was glad to know I could enroll. This is something that I feel would be a great accomplishment for me.

I loved the fact that this class was a work at your own pace, especially since I usually flow at a faster pace than most people so I was able to do this course as soon as each assignment was given.



# Meet Angelo:



## Meet Angelo

With the help and support of the GRID team I learned the job, I gained a lot of confidence, and now I feel like I am a professional.

"I grew up in Mendocino County which is a beautiful place. I'm Native American and so I have always appreciated that beauty, and I want to maintain it. My experience overall (with GRID) was magnificent, the team was great and really helpful..."

I felt like I was part of the team. I learned a lot, from conduit bending to grounding to getting up on the roof. I also appreciated the little things, like stopping at a beautiful creek or river on the drive after work. We went to the library in Covelo, which showed that GRID staff really cares about the community, and about learning about the community and tribes in the area. Everybody at GRID is working hard, pushing everybody to work hard, stay safe, and get the job done."

"When I heard about the opportunity... I was interested right away... because GRID works with low income families and helps the planet."





People. Planet. Employment.

**Thank You! Questions?**



