

PUEBLO OF LAGUNA
DEPARTMENT OF ENERGY
OFFICE OF INDIAN ENERGY
PROGRAM REVIEW

Anne Oandasan MPA/MCRP
Planning Program Manager, Pueblo of Laguna

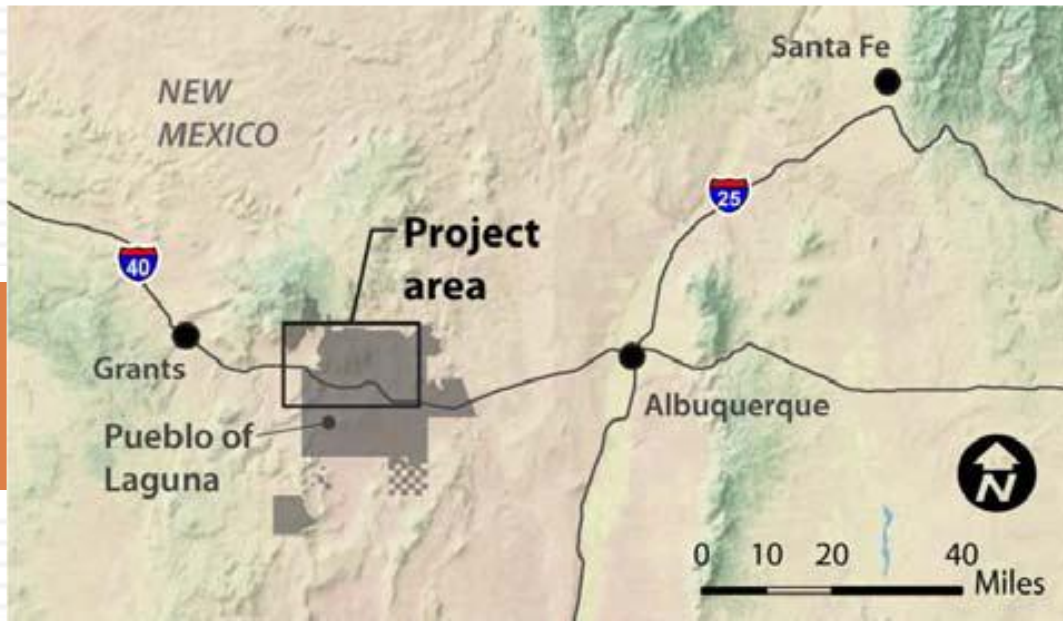
2023 Office of Indian Energy Program Review
Denver, Colorado, November 13 -16, 2023



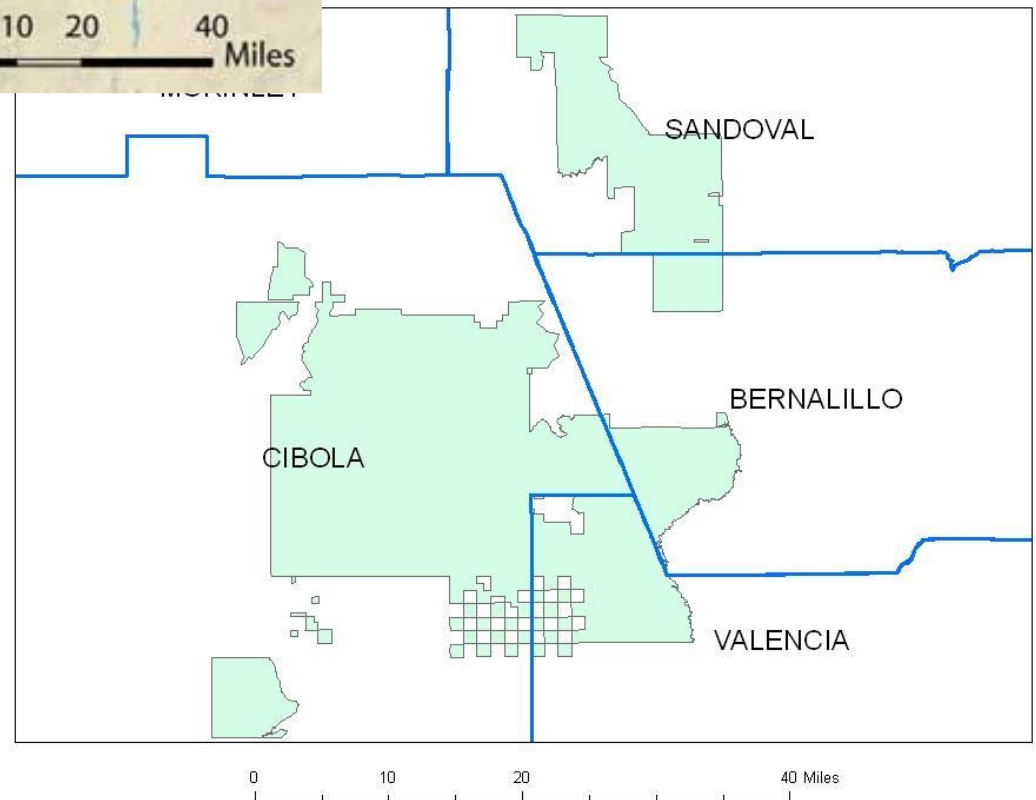
The land, the people, the Pueblo

- Still present ancestral homelands since time immemorial
- A Spanish recognized, Mexico recognized & federally recognized Pueblo





- 808 square miles
- 6 Traditional Villages
- 8,767 Tribal Members
(4,500 on rez)



Ka'waika

The Hanu

- Existed since time immemorial, in the present homelands!
- *Welcomed, survived* the Spanish entrada, the unfortunate manifest destiny & continue to embrace resilience and adaptation for the members perpetual existence.
- A federally recognized Tribe: 1 of 4 Tribes with a written Constitution predating the Wheeler-Howard Act of 1934 – (Indian Reorganization Act- IRA).
- Cherokee Nation, Iroquois Confederacy, Chickasaw Nation, Ka'waika-Pueblo of Laguna

Tribal Government Structure

3 Branch Government

- ❑ Legislative, Executive, Judicial
- Legislative: 21 member Council- 12 Council members, Governor & 8 Staff Officers
 - ✓ Staff Officers: 1st Lt. Gov, 2nd Lt. Gov, Treasurer, Secretary, Head Fiscale, 1st Fiscale, 2nd Fiscale,
- Executive: Governor, Secretary, Treasurer
 - ✓ Tribal Operations- departments,
- Judicial: Chief Judge, Associate Judge, Judges Pre-tem
 - ✓ Probation & parole
 - ✓ Public Defender

Pueblo of Laguna: Six Villages



Village Leadership Structure

6 Autonomous Villages

Village leadership:

Staff Officer

Mayordomos

Tribal Council Members

Town Criers

Treasurer

Trusties

Planning at the Pueblo of Laguna

- Planning Program
 - Village Comprehensive Plans
 - Capital Improvement Plan
 - K'awaika Community Campus Master Plan
 - Facility plans:
bike/pedestrian, housing,
park & playground
- Other Programs
 - Water and Wastewater PER
 - Hazard Mitigation Plan
 - Community Health Assessment

GUIDING PRINCIPLES

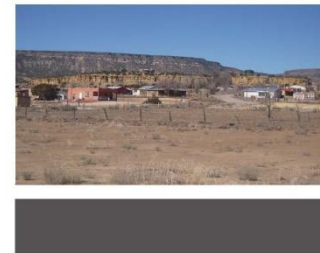
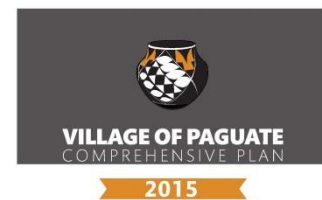
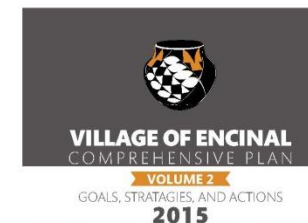
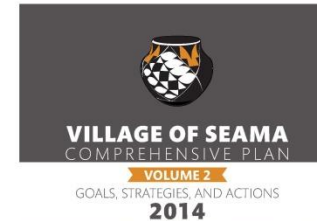
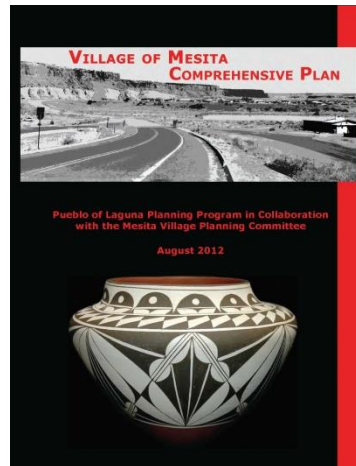
- ❖ Strategic Planning
- ❖ Community Input
- ❖ Capital Infrastructure Policy
- ✓ Apply: Plan- Develop- Construction processes

Purpose of Planning

- Document what you want for your community
 - Guidance for future leaders
 - Promote informed decision making
 - Support funding applications
 - Reenforce positions for legal purposes

Village-Level Planning

- Specific location
- Unique identity
- Responsibilities of mayordomos
- Community participation
- Compile into Pueblo-wide plans



Comprehensive Planning: Topics

TABLE OF CONTENTS

Resolution Adopting Plan	iii	CHAPTER 8: NATURAL RESOURCES AND ENVIRONMENT	100
Table of Contents.....	v	History, Current Conditions, and Suggestions	100
CHAPTER 1: INTRODUCTION	1	Goals, Strategies, and Actions.....	127
Community Involvement.....	1	CHAPTER 9: ECONOMIC DEVELOPMENT	134
Mapping, Data and Coordination.....	4	History, Current Conditions, and Suggestions	134
Authority.....	6	Goals, Strategies, and Actions.....	148
Outline.....	7	CHAPTER 10: INFRASTRUCTURE AND LAND USE	152
CHAPTER 2: VALUES	8	Land Use Patterns	152
CHAPTER 3: LAND - HISTORY AND BOUNDARIES	11	Land Use Suitability and Availability	154
Land History	11	Land Use Needs and Preferences.....	163
Village Name.....	12	Land Use Plan.....	165
Village Boundaries.....	12	Land Use and Design Principles.....	168
Places in Paguate.....	14	CHAPTER 11: IMPLEMENTATION	173
CHAPTER 4: POPULATION	16	Leadership and Commitment	173
Enrolled Members.....	16	Project Types	173
Residents of Paguate.....	21	Prioritization.....	174
Enrolled Members Living on Pueblo Lands.....	26	Annual Revisions and Amendments	174
Comparison of Population Projections.....	27	Capital Projects.....	175
CHAPTER 5: HEALTH, WELLNESS, AND SAFETY	29	MAPS:	178
History, Current Conditions, and Suggestions	30	APPENDIX A: VILLAGE HISTORY	189
Goals, Strategies, and Actions.....	51	APPENDIX B: DEMOGRAPHIC DATA	197
CHAPTER 6: HOUSING	60		
History, Current Conditions, and Suggestions	60		
Goals, Strategies, and Actions.....	88		
CHAPTER 7: TRANSPORTATION	93		
History, Current Conditions, and Suggestions	93		
Goals, Strategies, and Actions.....	98		

Information

- Census and Enrollment Data
- Other plans, studies
- Maps

Past, Present, and Future

- History
- Current Conditions and Concerns
- Goals, Strategies, and Actions

Comprehensive Planning: Entire Village



Participation

Village Planning Committees

- Appointed by village
- 6-8 village residents
- Range of ages and backgrounds
- Responsibilities:
 - ▣ Coordinate the planning process with planning program
 - ▣ Community meeting scheduling
 - ▣ Promote community involvement
 - ▣ Liaison with any existing village planning processes
 - ▣ Review drafts



Participation

Interviews with Elders

- ❑ Encinal
- ❑ Mesita
- ❑ Paguete
- ❑ Paraje/Casa Blanca
- ❑ Seama



Paraje, Housing Community Meeting

Community Meetings (individual topics)

- ❑ Mesita
- ❑ Paguete
- ❑ Paraje

OR

Open Houses (all topics)

- ❑ Entire village
 - ❑ Encinal
 - ❑ Seama
- ❑ “Neighborhoods” – Laguna
 - ❑ Old Laguna
 - ❑ Arrowhead/East Laguna
 - ❑ Green Acres/Subdivision
 - ❑ New Laguna



Mesita, Elders Community Meeting



Mesita, Farming and Livestock Community Meeting



Laguna – Green Acres/Subdivision “Neighborhood” Open House



Laguna – Arrowhead/East Laguna
“Neighborhood” Open House



Paguate, Youth Community Meeting

Values as a framework for future planning



CHAPTER 2: VALUES



Values can be defined as beliefs and ideals about what is good and right. They are the moral and ethical principles by which people live. Even though describing values can be challenging, it is helpful to accurately and explicitly define them when planning for the future. When values are clear, they form a foundation for decisions about appropriate actions and consideration of tradeoffs. This planning process is concerned with the values of the people of the Village of Encinal, as a community of people who live together and interact with each other, and are members of the Pueblo of Laguna.

The values of the Village of Encinal were expressed at various times and in various ways during this planning process. The first approach to gathering this information was through interviewing

elders. The list of interview questions for elders included: "What is important to this village?" "What kinds of morals are important?" and "How should these morals or values be carried into the future of this village?" A complete listing of the comments that elders made about values during interviews is included in Appendix A.

The values of the Village of Encinal are linked to the values of the Pueblo of Laguna as a whole. The Pueblo's values have been expressed in other planning processes. A report from a Pueblo-wide "Priorities Summit" held in November 2009 lists the Pueblo's core values as love, respect, prayer, family, obedience, and well-being. The values described by the Village of Encinal can be combined and summarized as:

The Right Way to Treat People

- Treat people the way you want to be treated
- . . . If you're nice, they'll be nice
- Have respect for people, their stuff - like your own stuff

Helping Each Other

- "Hey, let's all get together, let's help each other."
- Accomplishing more as a community instead of as one individual
- Coming together and helping one another, even in other villages
- We are all related, by clan or other, and we give freely to one another
- Everybody is kind of close, being related
- Helping each other all the time

VALUES

- Doing for one another, caring and sharing with one another
- Taking care of elders and checking on them
- Not wasting food that you took while out hunting
- Helping one another with plastering and building homes
- Not having any anger or jealousy or being envious
- Thinking about the people below

Communication

- Providing to get back together again
- Identifying ourselves and communicating with one another
- Enriching our lives with values that some of us have experienced

Participating

- Going by the traditional things within the village, meetings, community, and ditch work
- Continuing the traditional ways
- Good standing is participating and listening to the officers
- Paying at the end of the year doesn't make you in good standing - you're just paying a fine.
- Think of safety first - "Don't do it, you might get hurt"

Family

- Keeping our sense of family, our family structure
- Knowing that it's a blessing to have all grandparents around us
- We're mostly Sun Clan up here - we're one big family
- Spending time with family, grandchildren, and great grandchildren
- Using traditional ways to address family members

Working Things Out

- There was no such thing as divorce
- Taking care of our relatives until a problem gets straightened out
- Remembering the reason you got together in the first place as a couple
- Make married couples understand that they should live together

Discipline

- Respect when you are corrected, especially by an elder
- Community discipline between parents and elders of the village
- Learning to respect the grandparents
- Being obedient to a higher authority
- Listening to elders not to go near an arroyo when it rains, especially when it comes to the anger of a flood in the arroyos

- Listening to the elders tell us what's wrong and what's right
- Giving advice when people are sitting down to eat and swallowing it with the food so it's in the heart
- There's no sitting down for advice
- Don't eat with both hands at the same time, don't rush, take your time
- Don't watch TV and eat at the same time

Respect

- Everything is there - love, respect
- Not talking back to parents
- Listening to the wisdom of the elders
- Taking care of the elderly
- Encouraging the younger generation to pick up traditions and carry them on
- Know your family and where they came from

Friendliness

- Greeting each other
- Learning to have respect for all
- Greet our elders and each other the traditional way
- Speaking to elders
- Don't forget who you are, so you won't forget how to identify yourself

Culture and language – community persistence



GOAL:
LAGUNA TRADITIONS AND OTHER RELIGIONS ARE PRACTICED AND RESPECTED.

STRATEGY:

- Promote Laguna traditions in the home.

ACTION:

- to be done by families, including bringing young men into the kiva, doing traditional dances, teaching them while hunting, bringing young people to village meetings

STRATEGY:

- Offer opportunities to encourage Laguna traditions outside the home (recognizing that these are secondary to the efforts in the home, but that not all community members, especially young people, may have opportunities at home).

ACTIONS:

- Coordinate or allow for gatherings where people can come together to learn from each other.
- Develop and implement additional opportunities to teach young people about roles and responsibilities of being a good community member, such as being in good standing, and about tribal government.

STRATEGY:

- Increase housing options that allow families to live in Seama (as opposed to off the Pueblo's lands),



where they have more access to cultural and traditional practices.

ACTION:

- See the chapter on housing.

STRATEGY:

- Provide adequate community facilities for practicing and teaching culture and traditions.

ACTIONS:

- Plan, design, and implement repairs to the kiva, or construct a new kiva.
- Plan, design, and renovate the Catholic church.
- Plan, design, and construct a Pueblo of Laguna museum.
- Develop and maintain an inventory of village facilities and maintenance and renovation needs; use the inventory as a tool for tracking and implementing

ongoing maintenance and renovation projects.

STRATEGY:

- Assess impacts of programs and projects, especially those funded by the federal or state government and by profit-making organizations, for their impact on Laguna culture and tradition.

ACTION:

- Develop and implement procedures for consulting traditional leaders regarding the appropriateness of programs and projects, in relation to Laguna values.

GOAL:

THE LAGUNA PEOPLE, ESPECIALLY YOUNG PEOPLE, ARE LEARNING AND USING THE LAGUNA LANGUAGE.

STRATEGY:

- Promote the Laguna language at home.

ACTION:

- to be done by families, including speaking the language at home.

STRATEGY:

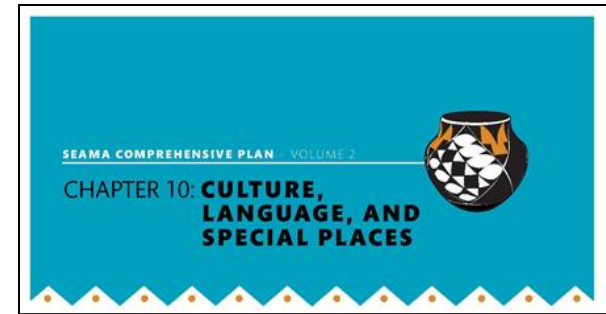
- Offer opportunities to encourage learning about and using the Laguna language outside the home (recognizing that these are secondary to the efforts in the home, but that not all community members, especially young people, may have opportunities

at home).

ACTIONS:

- Develop consistent lessons for the Laguna language in the villages.
- Assess current school curricula for opportunities to increase relevance to the Pueblo, including experiential and participatory learning on subjects such as the Laguna language. Plan an approach to implementing improvements in Laguna schools.
- Plan, develop, and implement language immersion sessions at the villages.
- Plan, develop, and implement language training camps.
- Plan, develop, and implement computer-based training programs (like the "Rosetta Stone" training approach) for the Laguna language.

- Create a cultural and historic preservation office to focus attention on possible resources that may be lost, and protect them.
- Assess the old day school for possible reuse.



GOAL:

CULTURALLY-SIGNIFICANT AREAS ARE APPROPRIATELY PROTECTED.

STRATEGY:

- Protect key locations from development and inappropriate activity.

ACTIONS:

- Continue efforts to ensure Mt. Taylor remains designated as a Traditional Cultural Property.
- Designate Flower Mountain as an area where no building should occur.

Elders – a valued and vulnerable population

PAGUATE COMPREHENSIVE PLAN

CHAPTER 5: HEALTH, WELLNESS, AND SAFETY



The Pueblo of Laguna's vision for a healthy community is, "Healthy tribal members who are able to access high-quality health care services when they need them." This chapter emphasizes the first three words, "healthy tribal members," rather than health care services.

Planning program staff worked with the Pueblo's Community Health and Wellness department to develop questions for the planning process. Participants were asked to consider a holistic concept of health: a healthy body, a healthy mind, and a healthy spirit. A healthy body could relate to physical activity and exercise, food and nutrition, the environment, physical safety, and education and information about health and medical issues, as well as access to health care when needed. A healthy mind

could relate to dealing with addictions, coping with loss, feeling economically secure, feeling supported in the workplace, having peace in the home, caring for children and elders, keeping the mind active through education, and other areas. A healthy spirit might relate to practicing cultural traditions, and a sense of community and connection.

The second part of the vision statement, ensuring that community members "are able to access high-quality health care services when they need them," is also very important. However, this planning process did not focus on the current status of medical care (particularly through the Indian Health Service), which is generally recognized as needing substantial improvement. Detailed recommendations regarding medical care and

treatment, as well as health insurance, are beyond the scope of this plan. They are being addressed through other planning efforts at the Pueblo.

Many of the recommendations in this chapter are linked to recommendations in other chapters. It has recently become obvious to most planners that health relates to other topics which are commonly included in comprehensive plans, such as housing, environment, infrastructure, and transportation. A recent comprehensive plan for New York City, for example, includes "public health" as a "cross-cutting topic." All of these topics affect the ability to promote wellness, reduce health risks, and ensure public safety.

PAGUATE COMPREHENSIVE PLAN



to the entire village of Paguate.

GOAL:
ELDERS ARE NOT ISOLATED FROM THE COMMUNITY.

STRATEGY:

- Ensure that there is a facility where elders can gather in the village.

ACTION:

- Plan for a designated space for elders, possibly in the new community center, Bender Hall, or in another location in the village; fund, design and construct.

STRATEGY:

- Improve or develop new programs to provide companionship to elders.

ACTION:

- Develop and implement a village-based program to match elders with people who can visit them; create a list of elders who would appreciate visits at home, and update it regularly.

STRATEGY:

- Assist families with taking care of elders.

ACTION:

- Assess existing training and funding programs for caregivers of elders; develop and implement new or improved programs.



GOAL:
ELDERS ARE SUPPORTED THROUGH ASSISTANCE WITH BASIC NEEDS.

STRATEGY:

- Ensure that elders can access existing programs.

ACTION:

- Assess any existing "elder ombudsman" programs to share information with elders and advocate for elders; develop and implement new or improved programs.

STRATEGY:

- Improve or develop new programs to help elders with basic needs.

ACTIONS:

- Develop and implement a village-based program that provides services to elders such as grocery delivery and cleaning; create a list of people who may be able to volunteer to help elders and use the list as a tool to match elders' needs with available assistance.
- Develop and implement a village-based program that coordinates young people to provide assistance to elders and do other work in the community. (also below)

Housing in appropriate locations

SEAMA COMPREHENSIVE PLAN – VOLUME 2 CHAPTER 6: HOUSING



COMMUNITY CONCERNS AND SUGGESTIONS

Detailed information on current housing conditions and trends is contained in volume 1. Some of this information is summarized and incorporated into the discussion below.

Community members generally feel that there is a shortage of housing in the village, especially for people who wish to move back to the village after working elsewhere. One elder moved back to the village after living and working off the Pueblo for many years. Her daughter lives away from the village for her job but comes back on weekends to look after her mother. She also plans to move back to the village permanently when she retires.

There may be many more

people who want to move back to the village. For example, one community member noted that it could be helpful to have housing available for community members who are living in other villages but want to move back in order to be able to serve as village officials for Seama. An active participant in the planning process lives in Laguna village, where he was able to purchase housing at a reasonable cost, even though he maintains his affiliation with Seama and serves as an officer there.

In the meantime, although there appears to not be enough housing in Seama for people affiliated with the village, there are people who are not affiliated with the village who are living there, typically in homes managed by LHDME. People who are not affiliated with the village may not participate in village

meetings and public work in Seama. This can affect community life.

Homes in Seama may also be too crowded for the people living there. Homes in Seama are similar to homes throughout the Pueblo in this regard. However, they have considerably more persons per household, and only slightly more rooms per house, than in the state, implying more crowding in Seama than in the state. This may suggest an even greater need for housing, so that young people can move out into their own homes.

Seama residents feel that in addition to a need for housing in Seama for village members, there is also a need for housing in the Rio Puerco area for tribal members who have jobs in Albuquerque, and housing at the Pueblo for non-tribal members, such as teachers. One participant

ing it into the GIS.

- Map land assignments electronically, using the GIS. Develop conceptual maps, and then survey individual land assignments.

STRATEGY:

- **Design homes that allow for efficient use of solar energy. (also see natural resources and environment)**

ACTIONS:

- Develop and adopt guidelines or policies that support or require that homes be designed for passive solar heating; design homes for passive solar heating.
- Develop and adopt guidelines or policies that support or require that homes be designed with roofs that can be used for solar hot water heating and/or solar electric panels; design homes with roofs that can be used for solar hot water heating and/or solar electric panels.
- Research opportunities for financial support for individual homeowners to install solar energy equipment; develop and implement a plan to promote these opportunities.
- Educate community members on the advantages of solar power; enlist the assistance of tribal members who work in this field for this effort.

GOAL:

DEVELOPMENT IS LOCATED IN APPROPRIATE AREAS, AND RISKS ARE MITIGATED IN OTHER AREAS.

STRATEGY:

- **Avoid development in areas that present safety and security risks; define and implement mitigation measures in areas where development cannot be avoided. (also see natural resources and environment)**

ACTION:

- Designate and map floodplains. Develop and adopt guidelines or policies that limit development in this area, and that require mitigation for any necessary development.

Housing with alternative energy

PAGUATE COMPREHENSIVE PLAN CHAPTER 6: HOUSING



HISTORY, CURRENT CONDITIONS, AND SUGGESTIONS

Housing Availability

Number of Households

There are various sources of information on the number of households within the Village of Paguate. First, the U.S. Census gathers this information as part of the decennial (every ten years) Census, for specific geographic areas. The area most closely associated with the Village of Paguate is known as the Paguate Census Designated Place, or "Paguate CDP." (Sometimes CDP's are also called "places"). According to the 2000 Census, the Paguate CDP had a total of 183 housing units (occupied and vacant). According to the 2010 Census, the Paguate CDP had a total of 191 housing units (occu-

ped and vacant), an increase of 8 homes, or 4%. In 2010 there were 1,368 homes in the Pueblo as a whole; the Paguate CDP had 14% of the total homes within the Pueblo.

The Pueblo of Laguna Utility Authority also maintains information about the current number of water utility connections within the Pueblo, by village. Almost all households are connected to the Pueblo's water system. Homes which are used occasionally, specifically traditional homes in the Pueblo's villages used during feast days, are not charged for a connection, so people who use both types of homes are not double-counted as part of the population. According to December 2010 data from the Utility Authority, there were 182 billing accounts in Paguate. There were 1,238 billing accounts in the Pueblo

as a whole; Paguate therefore had 15% of the accounts. This includes six LHDME low-rent homes in Paguate. According to February 2012 data, there were 189 billing accounts in Paguate out of 1,175 billing accounts Pueblo-wide, not including LHDME accounts; this is 16% of the accounts.

The Pueblo of Laguna addressing program also maintains information about the number of residential structures within the Pueblo, by village. As of January 2012 the addressing program counted a total of 224 homes in Paguate. Of these, 187 had received official address certificates, a fact which helps verify that they are indeed homes. There were 1386 homes in the Pueblo as a whole; 16% of the homes had Paguate addresses. There were an additional 119 structures that may have at one time been houses but are no

PAGUATE COMPREHENSIVE PLAN

ACTION:

- Assess existing land assignment records and record-keeping system; develop and implement new or improved land assignment record-keeping programs, including the use of geographic information systems.

GOAL:

SOLAR POWER IS USED FOR HOUSING NEEDS.

STRATEGY:

- **Design homes that allow for efficient use of solar energy.**

ACTIONS:

- Develop and adopt guidelines or policies that support or require that homes (constructed with outside sources of funding) be designed for passive solar heating; develop and adopt procedures for encouragement and enforcement; encourage and enforce.
- Develop and adopt guidelines or policies that support or require that homes (constructed with outside sources of funding) be designed with roofs that can be used for solar hot water heating and/or solar electric panels; develop and adopt procedures for encouragement and enforcement; encourage and enforce.

- Assess opportunities for financial support for individual homeowners to install solar energy equipment; develop and implement new or improved programs, which may include education to homeowners on existing programs.
- Educate community members on the advantages of solar power; enlist the assistance of Pueblo members who work in this field for this effort.

GOAL:

TRADITIONAL JURISDICTION OVER LAND IS RECOGNIZED AND SUPPORTED.

STRATEGY:

- **Support mayordomo authority over residential land assignments.**

ACTION:

- Develop and implement procedures, guidelines, or policies that support or require meaningful involvement of mayordomos in housing and land use decisions, including those made by LHDME; encourage and enforce.

Housing in traditional areas and with traditional materials



PAGUATE COMPREHENSIVE PLAN



Figure 6-3a. Housing rehabilitation visualization, before and after, house 1 (see figure 6-3h).



Figure 6-3b. Housing rehabilitation visualization, before and after, house 2 (see figure 6-3h).



Figure 6-3c. Housing rehabilitation visualization, before and after, house 3 (see figure 6-3h).

PAGUATE COMPREHENSIVE PLAN

GOAL:

THE VILLAGE'S HOUSING IS RESPECTED AS A PART OF THE COMMUNITY, RESTORED, AND MAINTAINED.

STRATEGY:

- **Rehabilitate, or if necessary rebuild, homes in the village proper.**

ACTION:

- Assess feasibility of home rehabilitation, working with mayordomos and families. Develop a plan, including cost estimates, for reclaiming structures in the village proper, through rehabilitation or demolition and reconstruction, which might include financial and/or labor assistance to families, transfer of land to family members able to do the work, return of land to the village, and other elements. Fund, develop, and implement a home rehabilitation/reconstruction program; fund, plan, design, and rehabilitate/reconstruct homes.

GOAL:

TRADITIONAL HOME BUILDING MATERIALS AND TECHNIQUES ARE WIDELY USED.

STRATEGY:

- **Continue to practice traditional building techniques.**



incorporate into guidelines and policies.

- Develop and adopt guidelines or policies that support or require that traditional home building materials be used in home construction, while ensuring community safety; develop and adopt procedures for encouragement and enforcement; encourage and enforce.

GOAL:

HOUSING ALLOWS FAMILIES TO LIVE NEAR EACH OTHER AND SUPPORT FAMILY LIFE.

STRATEGY:

- **Expand homes for extended family living, whether by elders sharing homes with younger family members or young families living with parents. (also see elders, youth)**

ACTIONS:

- Assess existing housing programs for their ability to be used for home expansions; develop and implement new or improved programs.
- Develop and adopt guidelines or policies that support or require that home designs allow for future expansion; develop and adopt procedures for encouragement and enforcement; encourage and enforce.

STRATEGY:

ACTION:

- Continue and expand village-based programs to train community members in the use of traditional home building materials and methods.

STRATEGY:

- **Incorporate building standards for traditional homes into written policies.**

ACTIONS:

- At the village level, working with the mayordomos and other community members, develop a list of acceptable building materials for traditional homes;

Housing that withstands natural events

Strategy: Develop rental housing that is explicitly linked to programs that help people develop skills needed for homeownership. (Also see below regarding programs.)

- Action: Develop, fund, and construct rental apartments for Mesita community members.

Goal: Homes are safe and of top quality construction, to stand the test of time and be passed on from generation to generation.

Strategy: Rehabilitate, or if necessary rebuild, homes in the village proper. (also see above)

- Action: Designate structures which are abandoned and creating safety hazards; develop a plan for demolition; remove abandoned structures (to reduce habitat for rats and snakes and remove “attractive nuisances” which children may play on).

Strategy: Develop a one-stop shop for housing renovation and repairs.

- Action: Develop a “one-stop shop” program for coordinating housing renovation and repairs among LHDME, the Pueblo’s Public Works Department General Maintenance Program, POLUA, Native American Independent Living, and any other outside resources. Obtain support and implement the program.

Strategy: Ensure that home repairs and renovations meet safety standards.

- Action: Develop a program for inspection of all home repairs and renovations; obtain support and implement the program.
- Action: Develop procedures to hold contractors accountable for housing work done on the Pueblo; obtain support and implement procedures.

Strategy: Assess and mitigate health hazards from contamination in the home.

- Action: Encourage residents to test their homes for radon as part of the current EPA-funded study.
- Action: Develop a program to test for, and, if necessary remediate, problems with mold, asbestos, and lead-based paint in homes. Obtain support and implement the program.
- Action: Develop and adopt guidelines or policies that support or require homes to be designed to reduce radon exposure in the home; design homes to reduce radon exposure in the home.

Strategy: Design and construct homes to withstand natural events.

- Action: Develop and adopt guidelines or policies that support or require that homes be designed and constructed to withstand hail storms, high winds, and other natural events; design homes to withstand natural events.

Goal: Homes are accessible to all family and community members, regardless of physical



Alternative transportation – biking and walking

CHAPTER 7: TRANSPORTATION



COMMUNITY CONCERNS AND SUGGESTIONS

Community concerns about transportation can be summarized as:

- Traffic safety
 - Cars traveling too fast
 - Poor visibility
 - Livestock on the road
- Poor maintenance and potholes on the roads.
- The I-40 underpass on Rainfall Road to Casa Blanca (L24) – minimal sight distance
- Design of the bridge on Rainfall Road over the Rio San Jose in the village (bridge M108, between Sacred Shield and Pollen) (note: bridge redesign is now underway)
- Stability of the bridge on Rainfall Road between the village and Philadelphia (L24)

- The railroad crossing on Rainfall Road (L26) north of the village
- Lack of reliable transportation, and the impact on keeping a job
- The price of gas, and the impacts of driving on the environment
- Safety while walking and biking, especially due to cars traveling too fast

Safety

Community members suggested the following transportation safety improvements:

- Install speed bumps
- Make sure speed limit signs are visible
- Increase police presence to enforce speed limits
- Install street lights to increase visibility for nighttime drivers and pedestrians
- Install and maintain fences along the side of the road,

to keep livestock off the road

Infrastructure Improvements

Community members also suggested transportation infrastructure improvements:

- Maintain paved roads, particularly those with potholes (Rainfall Road near Philadelphia, Yellow Flower Road near the cul-de-sac).
- Pave Rainfall Road in New York, particularly for the children who walk on it to catch the school bus.
- Maintain dirt roads, and stabilize some with gravel (e.g., Cottonwood Road, the back road to Acoma).
- Maintain all roads to ensure emergency vehicle access.
- Maintain and stabilize bridges. Repair Seama Bridge (on Rainfall Road, L26, in the village between Sacred Shield Road and



GOAL:

ALL MODES OF TRAVEL, ESPECIALLY BIKING AND WALKING, ARE SAFE.

STRATEGY:

- Design streets to reduce, not increase, vehicle speeds, especially in residential and community areas, to reduce risks to people and property. (also see health and wellness)

ACTIONS:

- Develop and adopt guidelines or policies that support or require that road designs include “traffic calming” approaches to keep traffic speeds low; design roads with “traffic calming” components. Include approaches that balance public safety vehicle access with lowered traffic speeds.
- Research areas where speed limits may not be apparent to motorists; purchase and install additional speed limit signs.
- Research strategic locations for streetlights, estimate costs, purchase, and install

STRATEGY:

- Ensure current and future streets are designed to be safe for walking, biking, and accessing transit. (also see youth, health and wellness)

ACTION:

- Design and construct key bike and pedestrian route improvements with connections to important destina-

GOAL

STRATEGY

ACTION

tions (using the Pueblo of Laguna Bike and Pedestrian Route Plan as a guide).

- Locate and design bus stops; construct or install appropriate equipment.
- Develop and adopt guidelines or policies that street improvements and new streets be designed as “complete streets,” which promote safety for pedestrians, bicyclists, and transit users (not just vehicles); design streets as “complete streets.”

GOAL:

TRANSPORTATION INFRASTRUCTURE IS SAFE AND IN GOOD CONDITION.

STRATEGY:

- Improve paved roads.

ACTION:

- Study and design improved drainage on Rainfall Road (including culverts near the sewer lagoon).

STRATEGY:

- Improve unpaved roads.

ACTIONS:

- Assess the need for and costs of paving Rainfall Road in New York.
- Study and develop a plan to stabilize some unpaved roads with gravel (Cottonwood Road, the back road to Acoma).

STRATEGY:

- Improve bridges.

ACTION:

- Construct improvements to Seama Bridge (on Rainfall Road, L26, in the village between Sacred Shield Road and Pollen Drive, over the Rio San Jose, BIA ID# M108)

STRATEGY:

- Enhance safety of interstate and railroad crossings.

ACTION:

- Design improvements for the interstate underpass on Rainfall Road (L24) to Casa Blanca, considering vehicle, bicycle, and pedestrian access.

STRATEGY:

- Improve maintenance of roads and bridges.

ACTIONS:

- Develop a plan for consistent maintenance of community roads; implement the plan.
- Address current problems

Alternative transportation – transit

CHAPTER 5: TRANSPORTATION



COMMUNITY SUGGESTIONS

Community members commented on the need for road repair, improved maintenance and weed mowing, and snow removal. They noted that the road south of the subdivision to the illegal dump site should be closed, to prevent future illegal dumping.

The community needs transportation safety improvements, especially reduced speed limits. Members also commented on the lack of reliable vehicles, and strongly supported alternative modes of transportation, such as transit, walking, and biking.

Community members made the following suggestions:

Road Conditions

- Re-gravel the village

roads.

- Maintain roadways throughout the village and include mowing weeds in the right of way.
- Improve the road north of the village (northern part of Encinal Canyon Road).
- Resurface the road to the village (Encinal Road).
- Provide snow removal equipment or a snow removal service for the village to help clear the roads during the winter months.
- Improve the roads to grazing areas for better access.

Road Access

- Close the road south of the subdivision to prevent illegal dumping in that area.

Safety

- Consider reducing the speed limit as drivers approach the village, especially when they get close to the stop sign.
- Consider reducing the speed limit to 45 mph between Kose Road and South Mesa Road, then 35 mph north of South Mesa Road for safe stopping distances.
- Install a stop sign on South Mesa Road at Encinal Road to prevent future accidents.
- Install street signs throughout the village.

Modes of Travel

- Construct separate bike trails in the village for safe transportation, and improve walkability.
- Construct sidewalks between the subdivision and the village.

activity.

ACTION:

- Reduce speed limits on Encinal Road near the village, and between Kose Road and South Mesa Road.

STRATEGY:

- **Design streets to reduce, not increase, vehicle speeds, especially in residential and community areas, to reduce risks to people (including pedestrians, bicyclists, young children, and elders) and property.**

ACTIONS:

- Develop and adopt Pueblo guidelines or policies that support or require that road designs throughout the Pueblo include “traffic calming” approaches to keep traffic speeds low; design roads with “traffic calming” components. Include approaches that balance public safety vehicle access with lowered traffic speeds.
- Develop and adopt Pueblo guidelines or policies that street improvements and new streets throughout the Pueblo be designed as “complete streets,” which promote safety for pedestrians, bicyclists, and transit users (not just vehicles); design streets as “complete streets.”

STRATEGY:

- **Design and construct bike and pedestrian routes in Encinal.**

ACTIONS:

- Construct priority bike and pedestrian routes along Encinal Road, Encinal-Cu-bero Road, Encinal Canyon Road, and Mt. Taylor Vista Road.
- Design and construct remaining “signed routes” for walking that are included the Pueblo of Laguna Bike and Pedestrian Route Plan.

GOAL:

TRANSIT IS AVAILABLE AND ACCEPTED AS A MODE OF TRANSPORTATION IN THE COMMUNITY.

STRATEGY:

- **Continue efforts to create reliable, regularly-scheduled fixed route transit service.**

ACTIONS:

- Continue efforts to add a connection to Route 66 Casino.
- Continue efforts to fund, train, and hire additional transit drivers.

Water availability and quality

ENCINAL COMPREHENSIVE PLAN – VOLUME 2

CHAPTER 6: NATURAL RESOURCES AND ENVIRONMENT



COMMUNITY SUGGESTIONS

The springs north of Encinal are very important to community members for domestic and agricultural water, along with their role in the natural community. Community members are concerned about water quantity and quality, including the risks of well drilling in Cubero, the loss of water piped to the Pueblo's Rio San Jose valley villages for domestic use, people filling bottles of water in Encinal without paying for them, and impacts of flooding on water quality. They are also concerned about the decline in agriculture in the village due to the deteriorating irrigation system, including Beecher's Dam, the small dam, and the ditches. There are also challenges with keeping land assignments in use for agriculture if people put

homes on them or simply do not plant. Some people are gardening in the subdivision, using domestic water because no other source is available there.

Like many other residents of the Pueblo, Encinal community members expressed concerns about grazing association fees. They also noted a need for rangeland improvements, including roads, dirt tanks, wells, and boundary fencing; the association fees help pay for these improvements. Within the village itself, people expressed concern about the village windmill, a landmark that is used to water both domestic and feral horses. Community members would also like to make sure that they have access to their livestock, including corrals closer to the village and allowing small livestock in the subdivision, currently prohibited in LHD-

ME's regulations.

Community members value the presence of wildlife in Encinal, though they strongly favor deer over elk, which are perceived as a nuisance. They also value the presence of wild plants such as Indian tea, wild celery, and wild onions, but are concerned that traditional knowledge about the use of these plants is being lost over generations. Village members expressed the importance of being able to cut wood on the Pueblo's lands and particularly around Encinal. They also noted that community members have used stones and minerals from around the village for various traditional purposes and for homebuilding.

Community members supported the use of solar energy, but expressed concern about the cost of solar panels for individual homeowners,



NATURAL RESOURCES AND ENVIRONMENT

GOALS, STRATEGIES, AND ACTIONS

GOAL:
WATER IS AVAILABLE FOR COMMUNITY USE, INCLUDING DOMESTIC AND AGRICULTURAL PURPOSES

STRATEGY:
• Research expected impacts of additional water use upstream from the village.

ACTION:
• Develop a detailed analysis and model of surface and ground water hydrology for the Pueblo of Laguna including Encinal.

STRATEGY:
• Continue development of water sources in the Rio San Jose Valley, as alternatives to the use of water from Encinal Canyon.

ACTION:
• Complete additional wells and associated infrastructure in the Rio San Jose Valley water system.

STRATEGY:
• Ensure that Encinal's water infrastructure is secure and water supplies continue to be available.

ACTIONS:
• Assess the need to fence or otherwise secure wa-

ter storage infrastructure in Encinal; take action as needed.

• Assess possibilities for a backup water supply in Encinal.

STRATEGY:
• Monitor water quality.

ACTION:
• Continue monitoring water quality in the Encinal watershed.

STRATEGY:
• Improve infrastructure that provides irrigation water to farm fields.

ACTION:
• Assess the irrigation system, including components such as Beecher's Dam, the small dam, and ditches, and plan, design, and construct improvements.

GOAL:
LAND IS AVAILABLE AND USED FOR FARMING.

STRATEGY:
• Reserve historically irrigated land for farming.

ACTION:
• Continue the practice of not providing residential land assignments in agricultural areas.

STRATEGY:
• Resolve issues with land assignments for farming.

ACTION:
• Map existing land assignments, determine land assignees, and work with them to assess difficulties in getting the land planted. Develop a plan to increase land in agricultural use, and implement the plan.

STRATEGY:
• Support agriculture in residential areas.

ACTIONS:
• Designate land for community gardens in or near residential areas; provide water to this area.

• Develop and adopt Pueblo guidelines or policies that support or require that new homes include gray water systems that can be used for home gardening; design and construct homes with gray water systems.

• Research the potential for retrofitting homes with gray water systems (e.g., kitchen sink or shower to holding tank) that can be used for gardening; design and construct.

• Develop and adopt Pueblo guidelines or policies that support or require that new homes be designed to allow for water harvesting off roofs, to be used for home gardening; design and construct homes that allow for water harvesting off roofs.

• Research the potential to retrofit homes to allow

Solar energy for homes and community buildings



The Village of Paraje includes not only its people but also its natural elements. These include the river and water, corn and other plants, wildlife and livestock, soil and rocks, sun and rain, and the seasons and other natural cycles.

WATER SUPPLIES, IRRIGATION, AND FARMING

It has become difficult to maintain traditional farming practices in Paraje and other villages in Laguna. The primary problem is the lack of water for irrigated agriculture. This is exacerbated by the time it takes to farm and the conflicting demands of jobs and, especially for young people, education.

Nonetheless, agriculture remains an important part of the village's identity. Many community members recognize farming as a component

of the Pueblo's history and sovereignty. They noted that revitalizing agriculture and growing food for the people would help with empowerment and independence, and could create greater self-sufficiency in the community. The Laguna people are currently dependent on the highway system to obtain food, which puts the community at risk.

Community members had many suggestions about ways to revitalize farming. A critical step in this process is to acknowledge the value of raising crops for home consumption, to increase access to healthy foods and help alleviate health problems such as obesity and diabetes. Community members could also grow and sell crops to local elementary schools to encourage children to develop healthy eating habits. Other ways community members sug-

gested supporting an agricultural lifestyle include:

- Share foods from gardens with community members and sell vegetables locally.
- Develop a community educational campaign that distributes information about where our food comes from (history and future).
- Emphasize more farming in the valley. This will help cut food costs for the family.
- Get young people involved in farming in the community and don't focus on profit.
- Encourage children in the village to learn farming and raising livestock. This has to happen in order to have what we want for the future.
- Establish community gardens closer to the village to grow tomatoes, carrots, onions, corn, melon, chile, and establish orchards as a community activity.
- Develop a community field (large size) and share farm-



traditional plants for medicinal and traditional cultural purposes.

GOAL: SOIL, ROCKS, AND MINERALS WITHIN THE VILLAGE JURISDICTION ARE USED AT AN APPROPRIATE SCALE AND CONTEXT.

STRATEGY:

- Respect the historical use of rock and mud for building structures

ACTION:

- Develop and adopt guidelines or policies that support or require that when structures are demolished, traditional building materials

which can be reused, such as rocks, are made available to potential users.

GOAL: SOLAR POWER IS USED FOR COMMUNITY NEEDS.

STRATEGY:

- Design homes that allow for efficient use of solar energy.

ACTIONS:

- Develop and adopt guidelines or policies that support or require that homes be designed for passive solar heating; design homes for passive solar heating.
- Develop and adopt guidelines or policies that support or require that homes be designed with roofs that can be used for solar hot water heating and/or solar electric panels; design homes with roofs that can be used for solar hot water heating and/or solar electric panels.
- Research opportunities for financial support for individual homeowners to install solar energy equipment; develop and implement a plan to promote these opportunities.

STRATEGY:

- Use solar power in community facilities to reduce long-term energy consumption and costs.

ACTION:

- Develop and adopt guidelines or policies that support or require that community

facilities have passive solar heating, solar hot water panels, and/or solar electric panels; design community facilities with these features.

GOAL: RISKS OF ENVIRONMENTAL HAZARDS KNOWN TO AFFECT HUMAN HEALTH ARE MINIMAL.

STRATEGY:

- Reduce the risk of water pollution from hazardous materials.

ACTION:

- Develop and implement a program to remove neglected and abandoned vehicles.

STRATEGY:

- Eliminate or minimize existing problems, and prevent future occurrences of, transportation impacts, including noise, on cultural activities.

ACTIONS:

- Design and install a noise barrier with a graphical design appropriate for the community, between the exit 108 subdivision and the exit 108 travel center.
- Initiate discussions with BNSF railroad and Federal Railway Administration regarding the potential for developing engineered safety improvements that would allow for a "quiet crossing" in Casa Blanca; if feasible, design and construct improvements, and move forward with Federal Railway

Administration process for obtaining a quiet crossing. Assess future transportation infrastructure projects for potential impacts on the community.

STRATEGY:

- Improve utility infrastructure to reduce risks to environmental and human health.

ACTION:

- Assess any ongoing need to replace failing household septic systems (after the planned sewer lines are constructed); design and implement improvements.

STRATEGY:

- Locate new development in areas that avoid or prevent environmental pollution problems that may affect health.

ACTIONS:

- Designate and map buffer zones around the Rio San Jose; develop and adopt guidelines or policies that limit development in this area.
- Designate and map buffer zones around wells (well-head protection zones); develop and adopt guidelines or policies that limit development in this area.
- Designate and map buffer zones around existing sewage lagoons; develop and adopt guidelines or policies that limit development in this area (to ensure adequate air quality).

Emergency preparedness

CONFIDENTIAL AND PROPRIETARY

PAGUATE COMPREHENSIVE PLAN

CHAPTER 8: NATURAL RESOURCES AND ENVIRONMENT



HISTORY, CURRENT CONDITIONS, AND SUGGESTIONS

The Village of Paguate includes not only its people but also its natural environment: the river and water, corn and other plants, wildlife and livestock, soil and rocks, sun and rain, and the seasons and other cycles.

Water

Water has always been important to the Village of Paguate. The village's history is tied to farming, using this water, beginning with the permanent settlement by farmers who had been traveling from Laguna to tend to their crops. Some elders commented on this:

» *There are archaeological sites around Paguate.*

... The sites are where there was water. At Chinatown, on the southeast side of the knoll, there was a spring. It flowed until the 1950s, and probably stopped because of the mining. The other springs dried up too. Now the water table is stabilizing, and there are some that have water again.

» *It [Chinatown] wasn't a home. . . . it was a place for crops, there was a place to stay over. The water used to just come up there. It was clear. Someone would leave a can for you to drink from. Or a gourd. You didn't worry about it. You could just drink the water. Rinse it out. It's not like that anymore.*

Some referred to sources of water:

» *Chinatown had*

springs. In June, the water table was low. But then the water would come up. A man planted there and when the water came up it rotted his corn.

» *Where the lagoons are now [southwest of the village], there was a lake there. The river goes towards the canyon and there was always plenty of water.*

» *Back in there [showing place on photo of village looking north], there was a place like that too, if you came from that old dirt road, you went in there and got some fresh cool water.*

The Pueblo of Laguna's lands are located in the Rio Puerco basin or watershed. A watershed is an area of land from which all of the water drains into the same place (figure 8-1). A watershed boundary

STRATEGY:

GOAL:

THE COMMUNITY IS PREPARED FOR EMERGENCIES, INCLUDING NATURAL EVENTS.

- **Develop relationships with potential partners who may assist in the event of an emergency.**

ACTION:

- Maintain the relationship between the Pueblo and the American Red Cross and other programs that support emergency preparedness and emergency management.

STRATEGY:

- **Develop and promote plans for emergency response in the village.**

ACTIONS:

- Assess any existing community education programs on basic emergency preparedness; develop and implement new or improved programs.
- Assess use of smoke and carbon monoxide detectors in homes; develop and implement new or improved programs to encourage their use.
- Assess any existing community education programs on emergency management operations and plans; develop and implement new or improved programs.

STRATEGY:

- **Enhance emergency preparedness through development of emergency facilities.**

ACTIONS:

- Assess the need for emergency housing; plan, fund, design, and construct.
- Assess the need for emergency shelters; plan, fund, design, and construct.

Emergency preparedness

shallow areas of the river to prevent flooding, but others rejected this idea, saying that it almost never floods in Mesita, and the people pray for rain.

Community members felt that the village could adjust to climate change if it was not abrupt. However, they commented that this is because they are not relying on farming and livestock anymore. The lack of water in the Rio San Jose is due to upstream users more than climate change. If water rights issues were resolved and farming and livestock raising were revitalized climate change impacts might be more noticeable. The Environmental and Natural Resources Department has expressed interest in more information on the impacts of climate change on perennial streams, rainy seasons and droughts, rangeland health, and vegetation elsewhere on the Pueblo's lands, such as Mt. Taylor.

Community members did express interest in increasing community preparedness for emergencies, which could include natural disasters. There should be a basic emergency response plan. There should also be designated evacuation routes, a central location for people to evacuate to, an emergency warning system, and drills so that people know how to respond in the event of a real emergency. There should be some community education about household preparedness. People should have potable water tanks. Community members also suggested that Council should set aside funds in case they are needed for emergencies, and be aware of how to access Federal Emergency Management Agency (FEMA) funding. Community members felt that the Tribal Emergency Response Committee (TERC) would be an asset in these efforts.

Goals, Strategies, and Actions

Goal: Water is available for cultural practices and agricultural use.

Strategy: Keep the Rio San Jose flowing all the way to Mesita. (Note that this was one of the top priorities in the prioritization session; it received six votes.)

- Action: Continue removal of salt cedar.
- Action: Continue to allow beaver trapping, to reduce beaver dams.
- Action: Persist in ongoing water rights case and discussions with the Pueblo of Acoma.

Strategy: Develop additional sources of water in Mesita for farming.

- Action: Continue efforts to develop additional wells, pipes, and/or storage tanks to provide water for farming. As needed, plan, design, and construct new facilities. ("Drill new wells" received three votes in the prioritization, and "Locate and use old/existing wells" received one. This project is underway.)

Strategy: Develop infrastructure to provide additional water to farm fields.

- Action: Design and construct a diversion dam (repair, rehabilitate, or replace the existing diversion dam) on the Rio San Jose upstream of the village (in conjunction with a wetland; see below).



Land use principles

PARAJE COMPREHENSIVE PLAN – VOLUME 2

CHAPTER 8: INFRASTRUCTURE AND LANDUSE



Comprehensive planning is closely linked to land use planning. When a community has expressed its goals for the future it can consider land that should be designated for specific uses. This designation also requires an analysis of land suitability for different purposes. Land suitability in the Village of Paraje was determined based on land characteristics, access to infrastructure, and current uses, as well as discussions with the mayordomos.

The heart of land use planning is the land use map, which designates areas for different purposes. The map is combined with a table that lists each of the areas and the types of uses which could be allowed or encouraged in those areas in the future. The uses are described in general terms. They do not imply that future development would eliminate

current land uses or affect current land assignments.

LAND USE NEEDS

As described in volume 1, in the chapters on population and housing, the resident population of Paraje may grow to approximately 837 people by 2040 or 2041. This assumes a relatively consistent growth pattern, though population and need for housing could be affected by numerous factors, including individuals' desire to move back to Laguna when unemployed or retired, and changes in eligibility for enrollment.

With an average of 3.25 persons per household (the current household size for occupied housing in the village – most of the housing is owner-occupied), the village would need 11 or 12 additional homes every ten years, with a total of 34 new homes

by 2040 (leading to 321 homes in the village overall). However, this assumes that the current household size is appropriate for the community. If the average of 2.55 persons per household (the average size in the State of New Mexico) is used, just for new housing, Paraje would need between 14 or 15 homes every ten years, with a total of 44 new homes by 2040 (339 homes in the village overall) (table 8-1, figure 8-1).

The calculations above assume that people who are currently living in houses in Paraje will stay in them, which is most likely not entirely true. Some people would most likely move out of their current housing if new housing was available. If the current population is 726 people, and all existing households decreased from an average of 3.25 persons per household to 2.55 persons per house-



INFRASTRUCTURE AND LAND USE

Provide land assignments adjacent to each other (to minimize unusable space in between them).

Strategy: Minimize road access to areas which should not be open to the public.

Action: Install gates and locks for access to farm fields and on Willow Road.

Strategy: Reserve historically irrigated land for farming.

Action: Continue the practice of not providing residential land assignments in agricultural areas.

Action: Map existing land assignments and work with land assignees to assess difficulties in getting the land planted. Develop a plan to get land planted, which may include the land assignee planting, allowing someone else to plant there, or giving the land assignment to someone else. Implement the plan.

Strategy: Resolve issues with land assignments for farming.

Action: Continue to approve the use of vacant agricultural land on a temporary basis when an assignee cannot farm.

Action: Map existing land assignments and work with land assignees to assess difficulties in getting the land planted. Develop a plan to

get land planted, which may include the land assignee planting, allowing someone else to plant there, or giving the land assignment to someone else. Implement the plan.

Strategy: Reestablish plants used for traditional purposes in the village.

Action: Research (interview and site visits) and identify (map and officially approve) areas within the village to protect plants used for traditional purposes.

Action: Develop programs for plant habitat restoration where needed, including removing invasive species and reducing conflict with livestock; obtain support and implement programs.

Action: Develop educational programs to instruct youth on how to identify and use traditional plants for medicinal and traditional cultural purposes.

Strategy: Locate new development in areas that avoid or prevent environmental pollution problems that may affect health.

Action: Designate and map buffer zones around the Rio San Jose; develop and adopt guidelines or policies that limit development in this area.

Action: Designate and map buffer zones around wells (wellhead protection zones); develop and adopt guidelines or policies that limit

development in this area.

Action: Designate and map buffer zones around existing sewage lagoons; develop and adopt guidelines or policies that limit development in this area (to ensure adequate air quality).

Strategy: Avoid development in areas that present safety and security risks; define and implement mitigation measures in areas where development cannot be avoided.

Action: Designate and map floodplains. Develop and adopt guidelines or policies that limit development in this area, and that require mitigation for any necessary development.

Action: Evaluate existing bridges for their structural stability and risks during floods.

Strategy: Allow for appropriate-scale economic development in various locations in the village.

Action: Designate and map areas for retail or commercial development in the village, such as the day school area.

Action: Develop and adopt guidelines or policies that allow or promote home-based businesses in Paraje.

Strategy: Resolve issues with land assignments and leases for economic development purposes.

Action: Clarify statements in the Constitution and May-

Land use principles



land assignments be given within these planned areas only, rather than in unspecified parcels or areas without infrastructure; only provide land assignments in these planned areas.

- Develop and adopt Pueblo guidelines or policies that support or require that the overall layout of new developments promotes walking, biking, and other physical activity; design new developments to promote walking, biking, and other physical activity.

Housing

- Develop and adopt Pueblo guidelines or policies that support or require that home designs are accessible to persons with physical disabilities; design homes to be accessible to persons with physical disabilities.
- Develop and adopt Pueblo guidelines or policies, such as a revised building code, that support or require that traditional home building materials be used in home construction, while ensuring community safety; build homes using traditional materials.
- Develop and adopt Pueblo guidelines or policies that support or require that home designs (for home own-

ership) accommodate or are expandable to accommodate large families; design homes to accommodate large families.

- Develop and adopt Pueblo guidelines or policies that support or require that home designs (for home ownership) have kitchen, dining, and living spaces that accommodate or are expandable to accommodate hosting large groups of people; design homes to accommodate hosting large groups of people.
- Develop and adopt Pueblo guidelines or policies that support or require that home designs (for home ownership) have adequate storage space (pantries, closets); design homes with adequate storage space.
- Working with the mayordomos and other community members, develop a list of features for homes which are acceptable and not acceptable in the village proper.
- Working with the mayordomos and other community members, develop a list of features for homes which are acceptable and not acceptable in areas outside the village proper.

Water, Energy, and Resources for Housing

- Develop and adopt Pueblo guidelines or policies that support or require that new homes include gray water systems that can be used for home gardening; design and construct homes with gray water systems.
- Develop and adopt Pueblo guidelines or policies that support or require that new homes be designed to allow for water harvesting off roofs, to be used for home gardening; design and construct homes that allow for water harvesting off roofs.
- Develop and adopt Pueblo guidelines or policies that support or require that homes be designed for passive solar heating; design homes for passive solar heating.
- Develop and adopt Pueblo guidelines or policies that support or require that homes be designed with roofs that can be used for solar hot water heating and/or solar electric panels; design homes with roofs that can be used for solar hot water heating and/or solar electric panels.
- Develop and adopt guidelines or policies (using traditional or other approaches) that

support or require that when structures are demolished, traditional building materials which can be reused, such as rocks, are made available to potential users, with priority to users in the community; make traditional materials from demolished structures available to potential users.

Transportation

- Develop and adopt Pueblo guidelines or policies that support or require that road designs throughout the Pueblo include “traffic calming” approaches to keep traffic speeds low; design roads with “traffic calming” components. Include approaches that balance public safety vehicle access with low-

ered traffic speeds.

- Develop and adopt Pueblo guidelines or policies that street improvements and new streets throughout the Pueblo be designed as “complete streets,” which promote safety for pedestrians, bicyclists, and transit users (not just vehicles); design streets as “complete streets.”

As with land designations, the plan calls for the adoption of guidelines or policies that set these requirements for design. In Encinal, traditional adoption and enforcement approaches, using oral tradition, should be used. If it is necessary to enforce these guidelines or policies with other entities or agencies, such as Laguna Housing Development and Management Enterprise or the U.S.

Department of Housing and Urban Development, it will be helpful to have formal written policies adopted by the Pueblo of Laguna.

Housing Visualizations

Planning program staff developed a number of visualizations of housing in the village proper (figures 8-5, a-g). These conceptual ideas were created by starting with photos of dilapidated structures or vacant areas in the village proper and integrating sample home design photos using software programs.

HOUSING VISUALIZATIONS

BEFORE



AFTER



FIGURE 8-5A. Housing rehabilitation visualization, before and after, house 1 (see figure 8-5g).



Implementation – Capital Projects



SEAMA COMPREHENSIVE PLAN - VOLUME 2

CHAPTER 12: IMPLEMENTATION

- Senior center. Not everyone can make it to the Pueblo's community senior center.
- Improving homes for elders (possibly with a village maintenance crew)
- General assistance to the elderly, including assistance with propane costs
- Stipends for elderly who take care of their grandchildren
- Not just the kiva. Not everyone practices the traditional religion, so this does not benefit everyone.
- The Presbyterian church as well as the Catholic church.
- Community clean-up
- Scholarships. These should not be loans; they don't need to be repaid.
- A reserve fund for the village

They also commented on the process for setting priorities. Currently, the staff officer and mayordomos recommend priorities for funding through the Pueblo's capital improvement plan, and inform other village members of the priori-

ties. Some members suggested that if a project is large, the village should put it out to bid, and "comparison-shop." Contracting through the Pueblo may get the village a better price. It is good to hire local people, but qualifications are also important, especially since there have been problems with work done by some contractors.

Similarly, keeping accurate records of finances for projects and ongoing expenses is important. The village needs an effective bookkeeping system, with a budget, and training on how to manage it. Funds from different sources and different purposes should be separated, since there are limitations on uses, and effects on taxes. The village financial process may need to be assessed (audited) to determine if it is effective. There should also be quarterly reports to the village on finances, at a minimum stating the beginning balance, deposits, checks, and

and electronic, to ensure the integrity and continuity of records. There are questions about where records should be stored. They would be easily accessible to the village if they were stored in the mayordomos' office, but they might be safeguarded more effectively if they were kept with the Pueblo's records. There was some discussion about keeping minutes from village meetings, which Seama does not do.

CURRENT CAPITAL PROJECTS

Capital projects are a special category of actions. Each year, the Council adopts a capital improvement plan which lists all capital projects, Pueblo-wide, in order to coordinate them and make decisions about allocation of resources. Villages, as well as programs, departments, entities, and agencies are required to submit their capital

projects as part of the plan.

The capital improvement planning process also includes requests for funding from the Council. Project sponsors are required to

rank their projects in order of priority. The Village of Seama could use the list of capital projects developed as part of this plan as a starting point for a community decision regarding the most important

capital projects in upcoming years. A summary of the proposed capital projects is listed below to facilitate this process. The list will need to be updated annually.

Short Title	Action Steps
Housing Improvements for Physical Disabilities	Action: Review LHDME's "physical needs assessment" re: access for persons with physical disabilities. Estimate costs; obtain funding; design and construct.
Community Center	Action: Renovate or reconstruct a community center in Seama, with space specifically designated for elders. Action: Plan, design, and construct a community center or recreation center with space designated for teens, or a teen center, in Seama.
Old Day School Assessment for possible Re-use	Action: Assess the old day school as a possible community building, with space specifically designated for elders. Action: Assess the old day school for possible reuse.
Alternative Schools (outside Seama)	Action: Plan, design, and construct facilities for alternative schools and/or a junior college.
Internet Connections (underway)	Action: Complete internet connections within the community, through the USDA Community Connect grant.
Rehab or Rebuild Homes in Village Proper	Action: Based on assessment, develop a plan for reclaiming structures in the village proper.
Remove Abandoned Homes	Action: Designate structures which are abandoned and creating safety hazards; remove abandoned structures.
New Kiva Repair Existing Kiva	Action: Plan, design, and implement repairs to the kiva, or construct a new kiva.
Renovate Catholic Church	Action: Plan, design, and renovate the Catholic church.
Pueblo of Laguna Museum	Action: Plan, design, and construct a Pueblo of Laguna museum.
Parks and Playgrounds	Action: Develop a plan for new and/or improved playgrounds and parks in the village; designate land; design and construct.
Baseball Fields, Improved or New	Action: Assess actual interest in having baseball teams in the villages. If there is interest, plan, designate preferred fields, design, and construct.
Basketball Court Improvements	Action: Design and construct improvements to Seama's basketball courts, including fencing the basketball court in the subdivision.
Fitness Equipment in the Village	Action: Assess the need for and feasibility of having fitness equipment in the village.
Sports Complex	Action: Research the possibility of a sportsplex in Seama; determine responsibility; assess how this land use might affect water rights.
Bike and Pedestrian Trails/Routes	Action: Design and construct key bike and pedestrian route improvements.

Capital Improvement Plan

Prepared the Pueblo of Laguna Capital Improvement Plan (CIP) for adoption by Council.

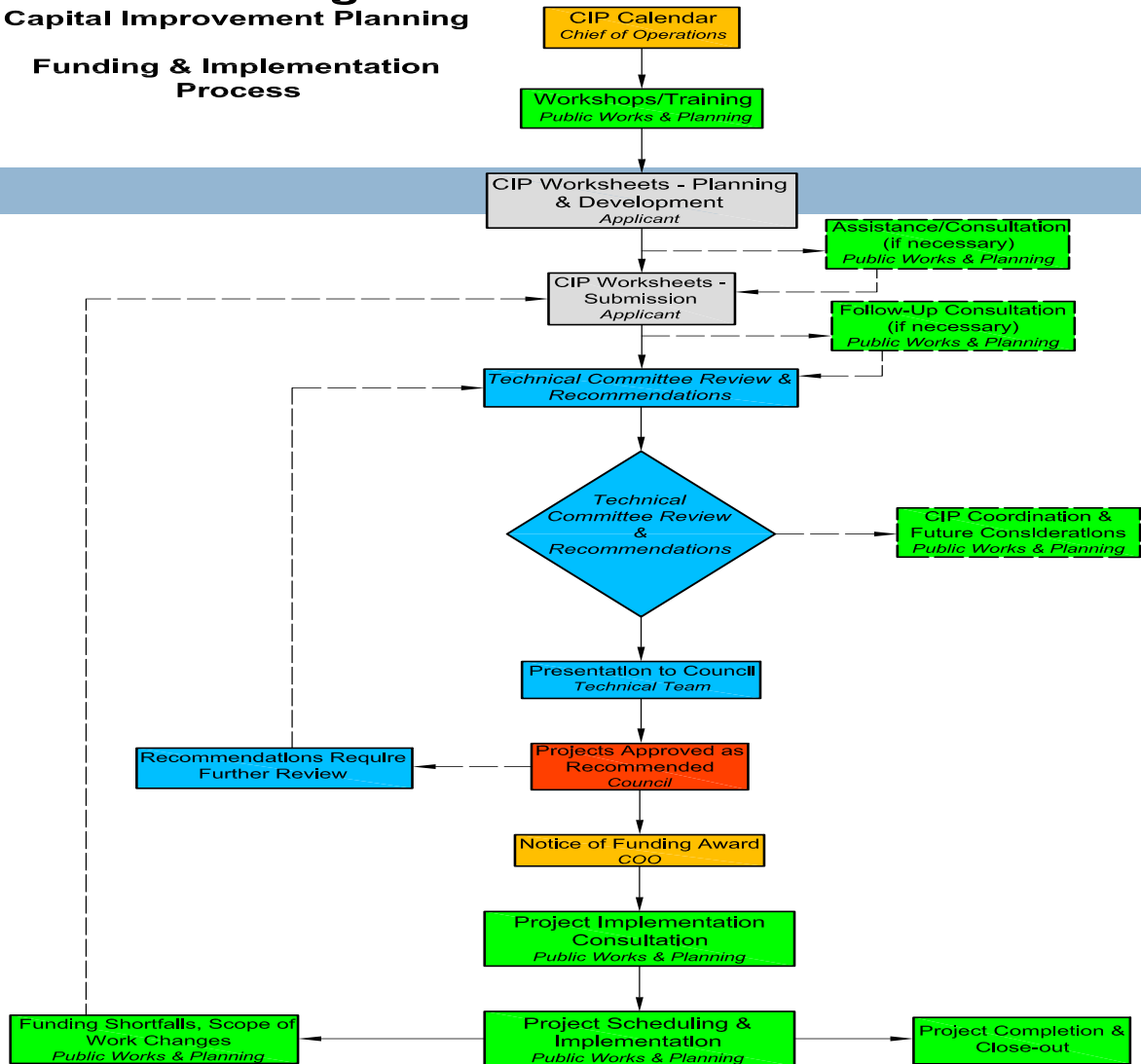
Develop Capital Improvement Plan with complete project list from all sponsors per adopted Capital Improvement Planning Policy.

CIP Project Worksheets - Information

- Basic information
 - Title
 - Type of project
 - Project “sponsor” and contact info
 - Location
- Scope of Work
- Need/Problem/Benefits
- Readiness
 - History (lessons learned)
 - Planning completed
 - Land/ROW approved?
 - Infrastructure connections approved?
 - New program expenses approved?
 - Coordination
 - Consideration of negative impacts
 - Related projects
- Funding
 - By phase
 - Available funds
 - Requested funds
 - Suggestions regarding outside funding
 - In-kind
 - O&M commitment

Pueblo of Laguna Capital Improvement Planning

Funding & Implementation Process



Legend

Chief of Operations

Public Works & Planning

Applicant

Technical Committee

Tribal Council

Increasing Capacity and Resiliency

The Project (s)

“Renewable Energy Projects ”

- DOI/BIA- Climate vulnerability assessments for infrastructure & buildings and health & wellness accepted by Council November 2020
- BRIC FEMA- Development of POL building code, incorporating resilience, per adopted Hazard Mitigation Plan and will be tied into the Pueblo’s CIP
- VW Settlement-Electric Vehicle Charging Stations (EVCS) through a VW Settlement Tribal Trust Fund
- Community Scale Solar Initiative per adopted Renewable Energy Feasibility Study Update and Plan
- DOE- Office of Indian Energy: Community Solar Project

Governance Strategic Direction & Empowerment

Council Expectations & Objectives

Pueblo of Laguna's six energy objectives:

- 1) Community development (decreased utility bills, funds for other needs),
- 2) Workforce and economic development (training and participation in the renewable energy economy),
- 3) Energy reliability (future storage),
- 4) Community resilience (alternative sources),
- 5) Relationship to people and the natural world (reducing fossil fuel use),
and
- 6) Energy sovereignty (Pueblo decision-making).

The Project

Office Of Indian Energy Awarded project

Photovoltaic Systems (PV) installed on 4 Community Centers:

- Mesita- 11.4 (kW) Rooftop solar PV system
- Paguate- 9.24 (kW)
- Paraje- 21.56 (kW)
- Seama- 11.00 (kW)
- Total- 53.24 (kW): Expect to generate 93,329 kWh annually

Project Goals & Objectives

Solar PV systems will meet specific project goals:

- Offset not less than 85% of each selected building's annual electricity use, Ranging from 87% to 103% of demand
- Save a minimum of 70% of the cost of utility bills per year per building
- Ranging from 75% to 77% percent (including service charges)
- Payback periods shorter than the estimated useful life of the project.

Project Progress To Date

FEMA BRIC Grant for Development of POL building code
Project Manager assignment

Electric Vehicle Charging Stations (EVCS) through a VW
Settlement Tribal Trust Fund

Community Scale Solar Initiative Complete Solar PV
Assessment and Design

Accomplishments To Date

Re-establishing the Planning Program's key Participation in all of the above due to employee turnover

Re-establishing schedule milestone and deliverables

Begin progress measures for all projects above

Thank You

Anne Oandasan MPA/MCRP

Pueblo of Laguna Planning Program Manager

aoandasan@pol-nsn.gov

(505) 552-1201