

KEYSTONE TEAM (with SERI, GDFWwatch, NARC)



DOE's Consent-based Siting for
Interim Storage Program:
DE-FOA-0002575



**U.S. DEPARTMENT
OF ENERGY**
NUCLEAR
AWARDEE™

Consortium Overview

Areas of Expertise:

- **Keystone Policy Center:** Community engagement, civic discourse, conflict management, coalition-building, capacity-building in collaborative problem-solving.
- **Social & Environmental Research Institute (SERI):** Social science research experience and expertise focused on community engagement and nuclear waste siting issues and consent-based processes.
- **GDFWatch:** Direct experience designing and helping implement consent-based siting process in the UK and studying repository programs around the world; building cross-sector and community-based alliances.
- **National Association of Regional Councils (NARC):** National network of regional councils, involving communities and government at all levels engaged in long-term socioeconomic planning and cooperation across geographies.

Consortium Overview

Background:

- **Brad Sperber, M.Div. (Principal Investigator, Co-Project Director)** – Director, Civic Engagement & Capacity-Building, Keystone
- **Tom Webler, M.S., Ph.D. (Co-Project Director)** – Senior Research Fellow, SERI
- **Roy Payne** – Executive Director, GDFWatch
- **Erich Zimmerman, M.S.** – Deputy Executive Director / Director of Transportation Programs, NARC
- **Jessica Routzahn, M.P.A., M.S.** – Program Manager, NARC
- **Seth Tuler, M.S., Ph.D.** – Senior Research Fellow, SERI
- **Ernest House, Jr.** – Director, Tribal & Indigenous Engagement, Keystone
- **Sarah Alexander, M.P.A.** – Vice President of Programs, Keystone

Collective capabilities include: Public involvement, stakeholder engagement, Tribal consultation, coalition building, communications, grants management, literature review

Geographical Mode of Engagement

Taking a regional approach – aiming to work in each case with a defined community of communities.

Basis for selecting (regional) communities:

- Willingness to participate from broad range of local or regional stakeholders.
- Capacity to use grant funding for and deliver on relevant objectives.
- Rural or at least exurban settings since these communities are often resource-poor and traditionally are over-burdened and underserved.
- Past efforts in municipal / regional dialogues on controversial issues.

- For *initial* round of engagement, communities not already polarized on nuclear policy issues.
- Special consideration given to NARC member communities with an interest in hosting a CISF.

Diversity across selected communities in terms of:

- Geographical region of U.S.
- Type of prior siting issues/processes.
- Population size.
- Demographics and socio-economic variables (e.g., some but not necessarily all having experienced significant environmental and economic injustices).

* **Note:** Latter project phases to involve perspectives from Canada and Europe.

Overview of Process

Phase 1: Recruitment

- Establish External Advisory Committee
- Select communities for initial engagement

Phase 2: Enhance community capacity for civic dialogue about potentially contentious siting decisions

- a) Initial engagement and situation assessment
- b) Local/regional capacity-building workshops
- c) First tranche of funding to participating communities
- d) Develop adaptable framework for community-based civic engagement

Phase 3: Reflection and refinement

- Midstream appraisal, evaluation, and adjustment as necessary

Phase 4: Community networking and learning

- a) Community dialogue about process design for consent-based siting of CIS
- b) Second tranche of funding to communities
- c) Cross-community learning and deliberation – design of conceptual framework for independent “hub”

Phase 5: Assimilate learnings and finalize outputs

Principal Methods

- Community-by-community **situation assessment** – stakeholder mapping, analysis of interview results and other qualitative data
- Community-by-community **capacity-building** – cultivating skills and tools for collaborative problem-solving, sensitive to each community's history, cultures
- **Interactive peer-to-peer learning** – within each community and (in Phase 4) between communities from different regions and different countries

Deliverables and Outcomes Expected

Principal deliverables

- Community framework for adaptive civic engagement
- Summary of and recommendations from Phase 4 convening.
- Comprehensive final report documenting findings and recommendations, including modifications to and use of the civic engagement framework, and notional design of independent knowledge and collaboration hub.

Outcomes

1. Framework for co-authoring CBS policy with civic society, so that policy development is informed by a community perspective and any final policy is more likely to command credibility with communities – enhancing chances of willing participation and successful siting of a CISF.
2. Communities equipped with enhanced capacity for effective civic dialogue, both internally and with siting agencies and developers.
3. Suite of community-to-community tools and engagement channels for building confidence, capacity, and capability for participating intentionally and meaningfully in a CBS process.

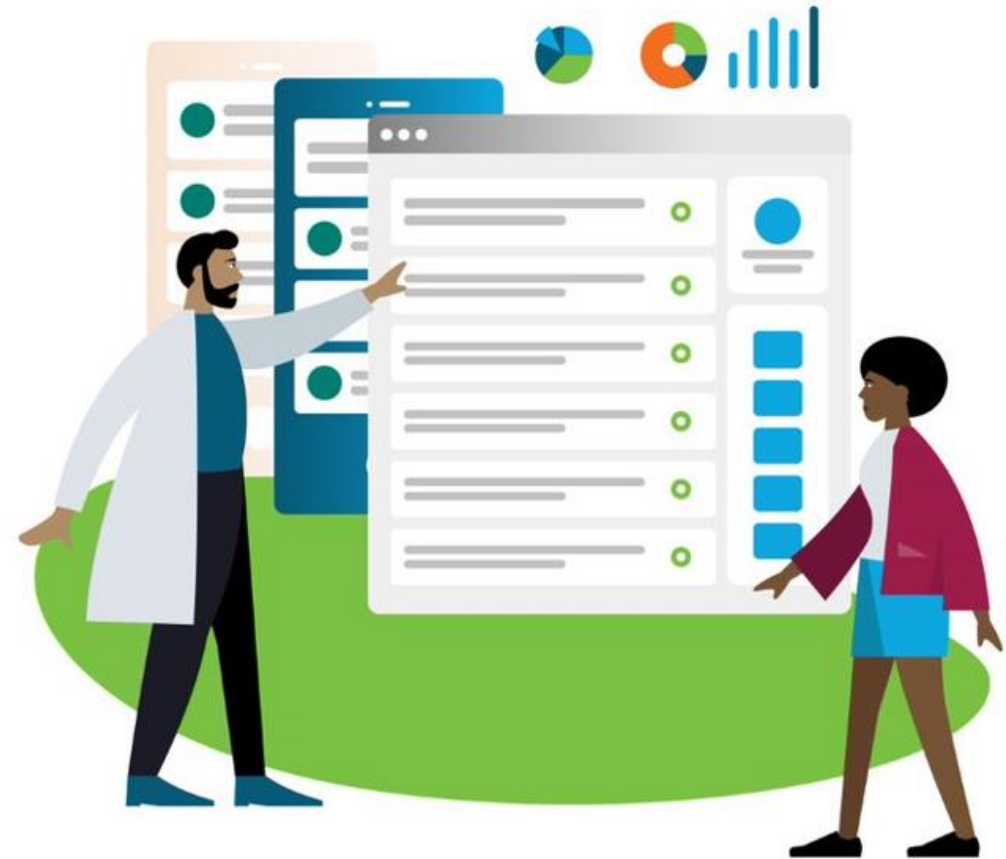
Thank You!

For questions or comments related to this consortium, please contact:

Name: Brad Sperber

Email: bsperber@keystone.org

Phone: 1-301-233-0734



**U.S. DEPARTMENT
OF ENERGY**

**NUCLEAR
AWARDEE™**