

# COMMON GROUND



# Consortium Overview

## Background

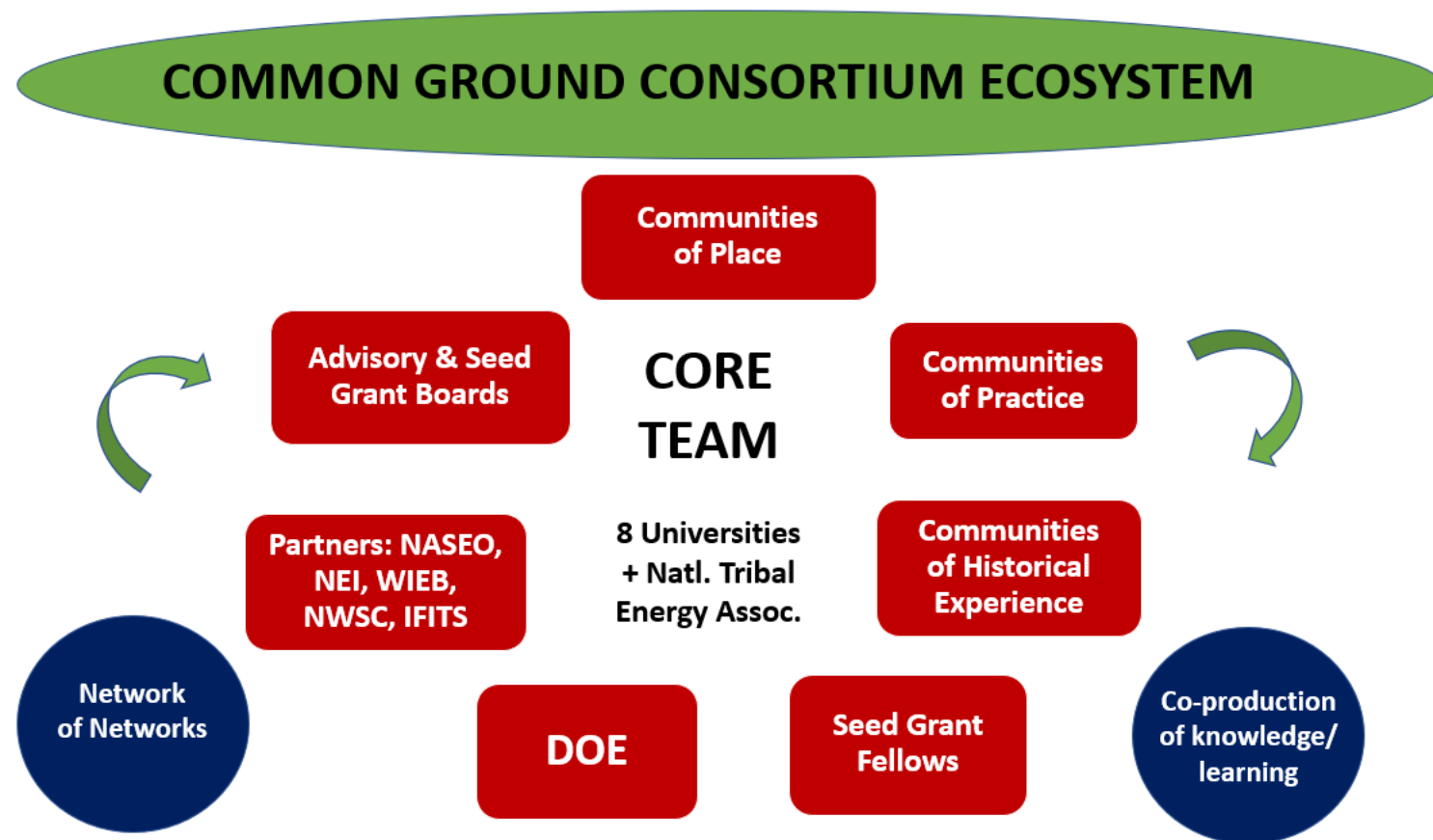
- **Western-centered collaboration** between 8 universities & the National Tribal Energy Association, with additional cross-sectoral partners from government, industry and academia

- A **network of networks** to advance understanding of better practices in CBS

links communities that have **historical experience** in nuclear technology/fuel cycle

with **practitioners** in nuclear waste and related policy,

& **those wanting to engage in forward-looking strategies** on consent-based approaches



# Consortium Overview

## Project Team

- **Energy Policy Institute/Boise State**  
→ Kathy Araujo, Cassie Koerner
- **Natl Tribal Energy Association (NTEA)**  
→ Daniel Cardenas
- **Univ. of Idaho** → Bob Borrelli
- **Arizona State** → Majia Nadesan
- **Idaho State** → Sarah Robey
- **Montana State** → Julia Haggerty, Lee Spangler
- **Colorado State** → Stephanie Malin
- **Univ. of Wyoming** → Wes Eaton, Steve Smutko, Temple Stoellinger
- **Univ. of Michigan** → Denia Djokic

## Partners

- **National Association of State Energy Officials (NASEO)**
- **Nuclear Energy Institute (NEI)**
- **Western Interstate Energy Board (WIEB)**
- **Nuclear Waste Strategy Coalition (NWSC)**
- **Inst. for Inclusive and Transformative Scholarship (IFITS)**



# Areas of Expertise

Our multidisciplinary team leverages strengths of historians and social scientists, with the National Tribal Energy Association, nuclear engineers and natural scientists



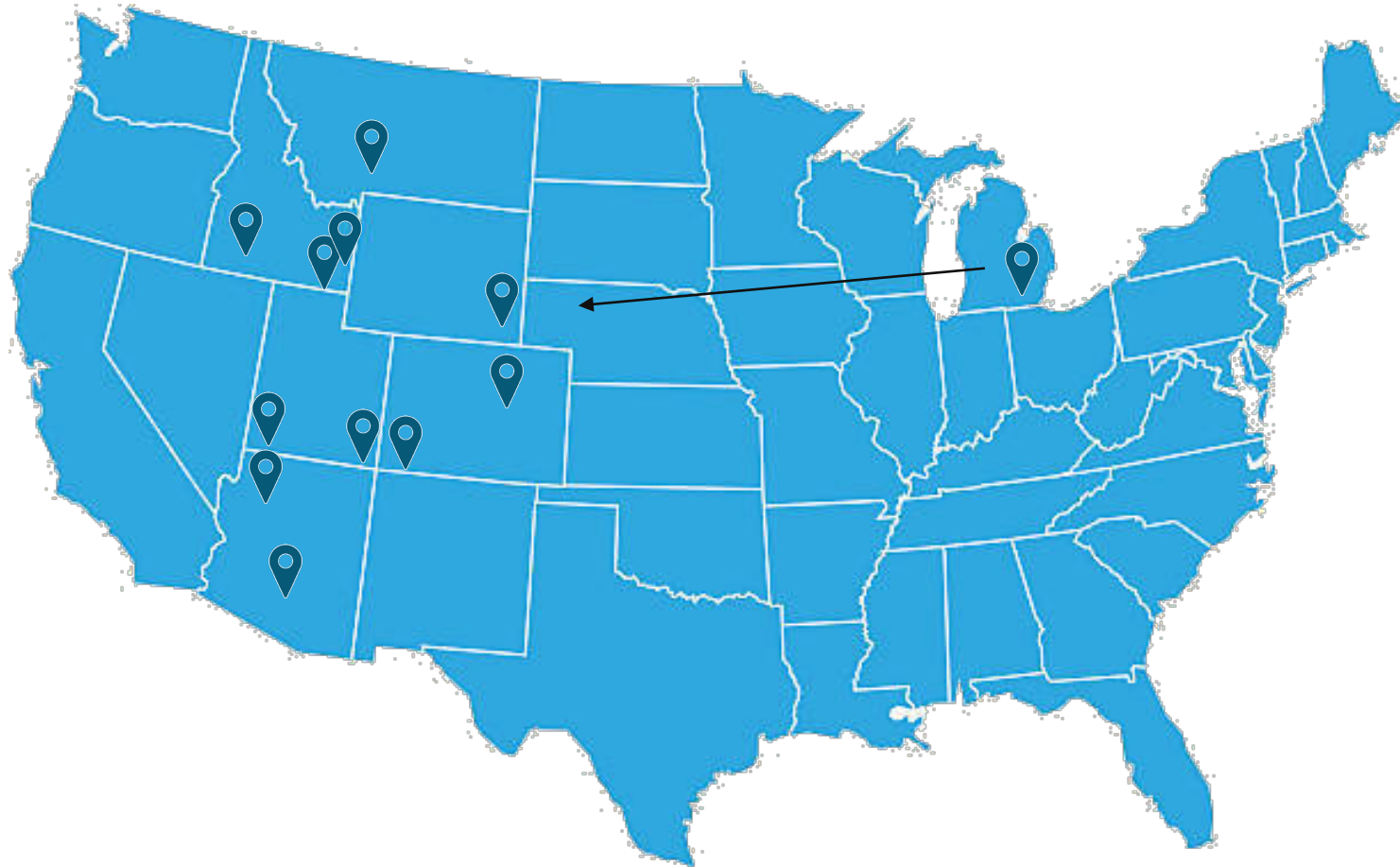
- Energy-Env Planning, Decision-making, Policy
- Env & Nat Res Sociology, Ethics, Energy Transitions
- Infrastructure Planning

- Socio-technical Systems
- History, Geography, Communications
- Mutual Gains & Community-informed Choice

- Local knowledge
- Sustainability
- Tribal Relations

- Social Aspects of Nuclear Technology & the Fuel Cycle
- Nuclear Engineering & Risk
- Modeling, GIS, Interviewing, Case Studies

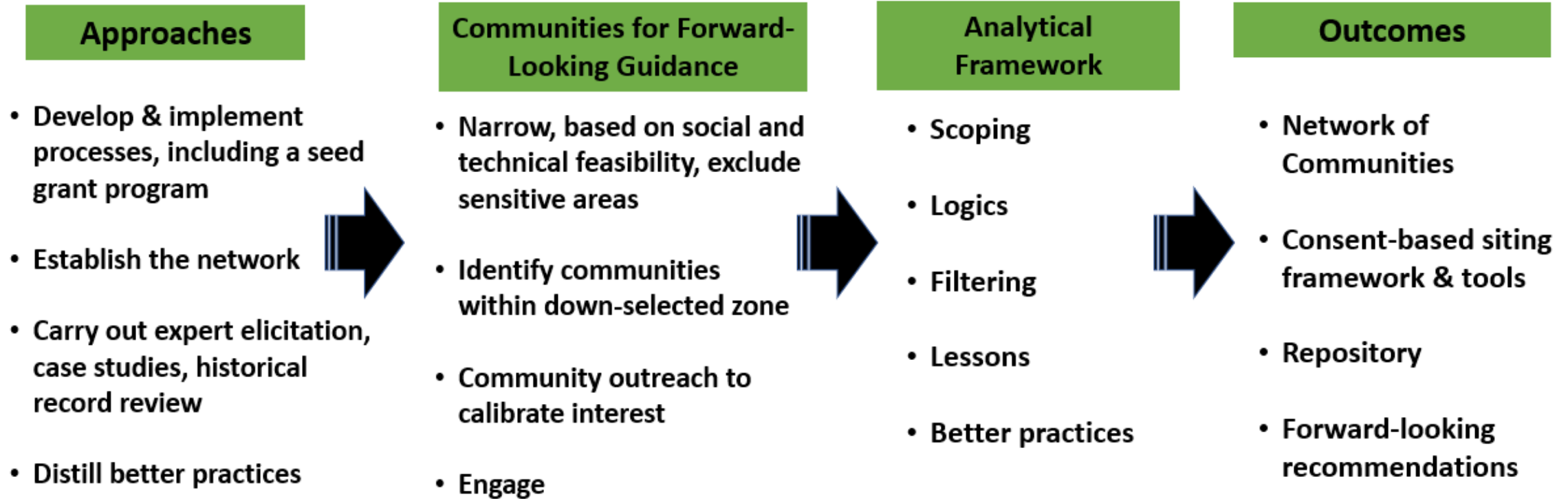
# Geographical Area of Engagement



Additional actors  
with national or multi-state  
reach beyond academia:

- NTEA
- NASEO
- NEI
- WIEB
- NWSC

# Overview of Process



Refinement of Processes, Tools and Knowledge/Building Capacity

# Overview of Methods

- The project adopts a strategy to advance participatory decision-making across geography, experience and sector.
- It utilizes the qualitative strengths of interviewing/case analysis/historical record review for briefings, with geospatial modeling of siting considerations.
- Mutual gains approaches and ethnographic observation, Delphi ranking and pairwise comparisons are used in community decision-making, with analytics based on scenarios, risk assessment, and fuzzy logic.



Photo: Shutterstock

# Expected Outcomes

## Deliverables:

- ✓ A **network-of-networks** consisting of people wanting to engage in problem-solving tied to consent-based siting of CISF(s) & nuclear waste
- ✓ **Articles & briefings** for communities, policymakers & industry
- ✓ A **knowledge repository, course modules & tools**, including a framework for consent-based decision-making

We aim for **broader anticipated outcomes** to include:

**Improved understanding** across geography, experience and sector from different forms of knowledge-holders;

**Identification of better practices;**

**Opportunity to restore trust and confidence with shared problem-solving;**

More informed communities, training, and writing.

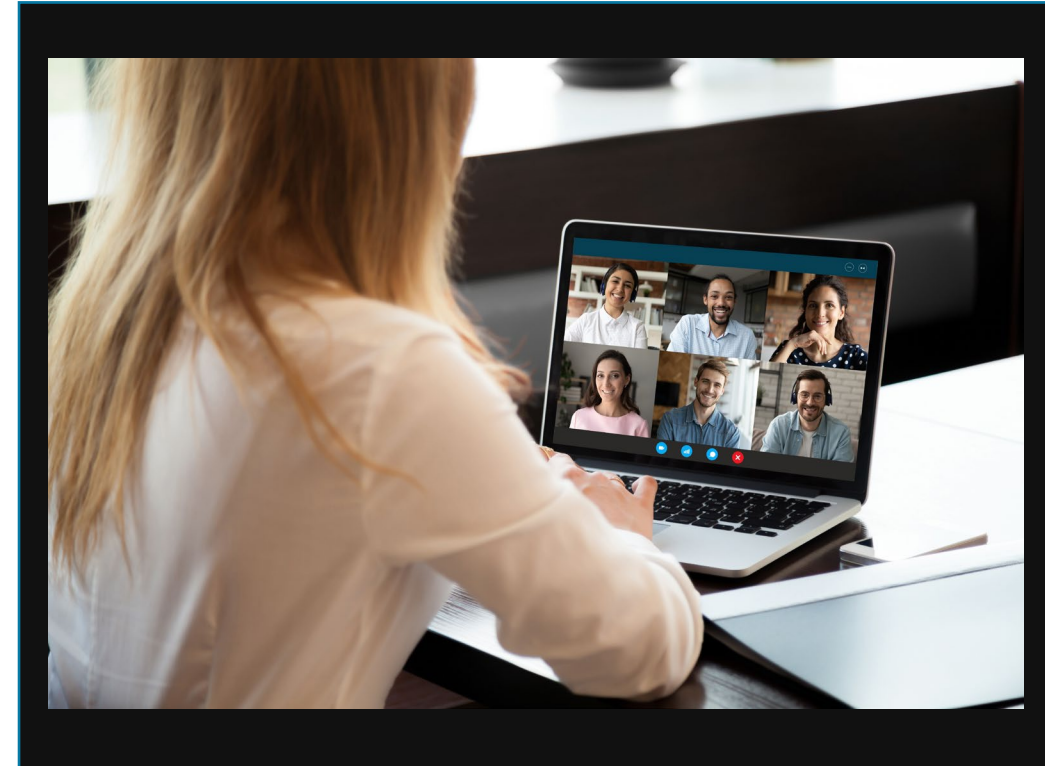


Photo: Shutterstock



# Thank You!

For questions or comments related to this consortium, please contact:

Name: Kathy Araujo

Email: [kathleenaraujo@boisestate.edu](mailto:kathleenaraujo@boisestate.edu)

