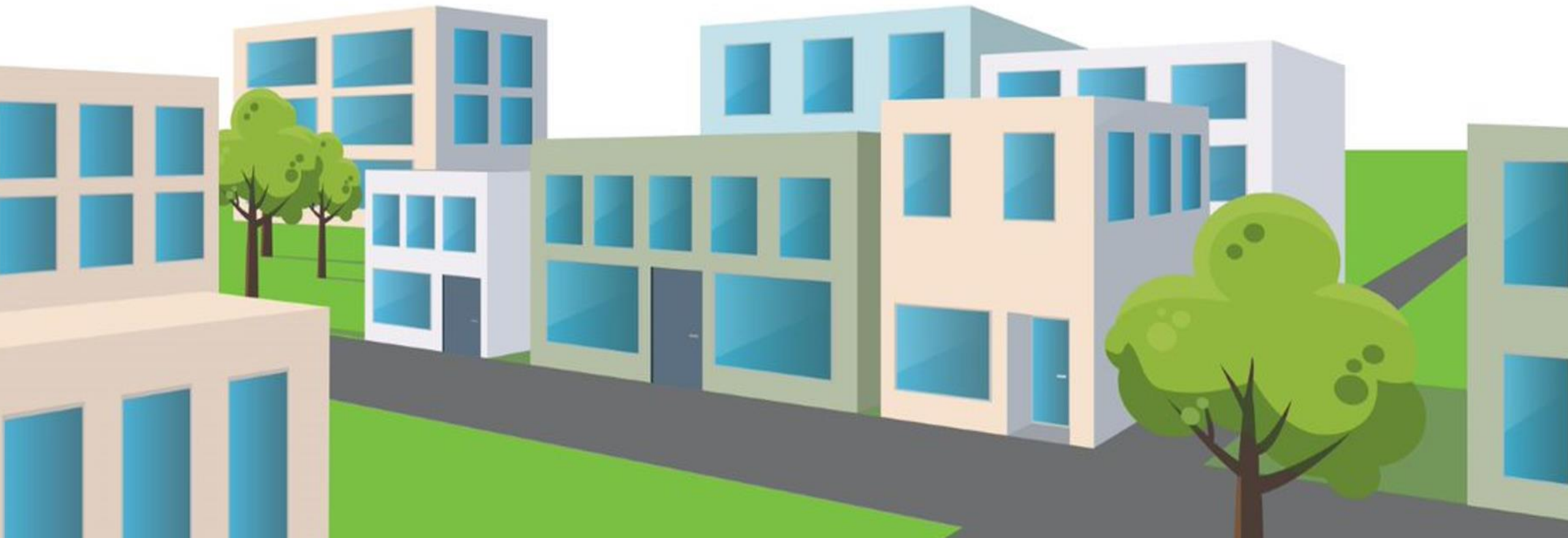


# American Nuclear Society Partnership for Asset-Based Collaboration



DOE's Consent-based Siting for  
Interim Storage Program:  
DE-FOA-0002575



**U.S. DEPARTMENT  
OF ENERGY**  
NUCLEAR  
AWARDEE™

# Consortium Overview

## Background:

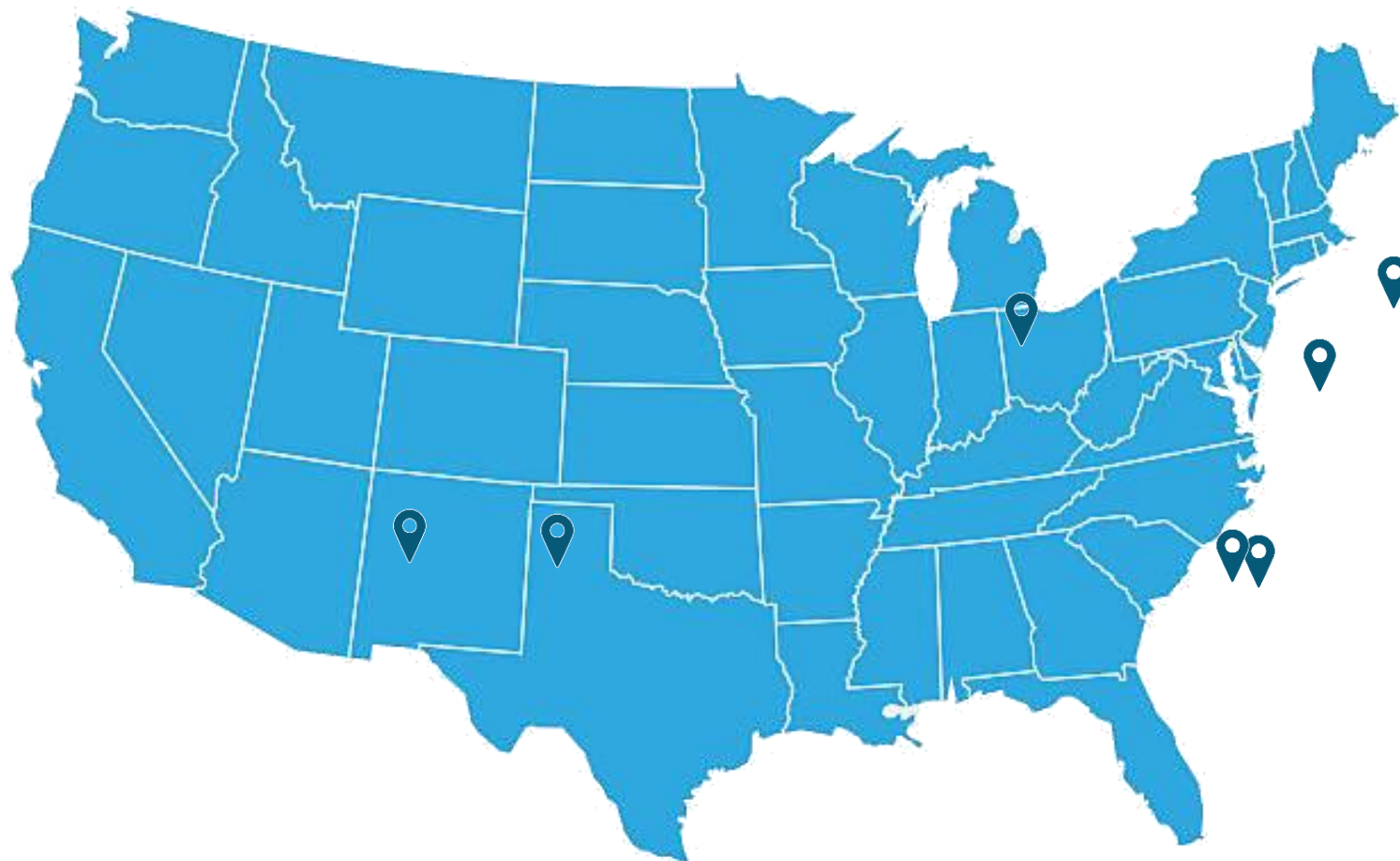
ANS joins the South Carolina Universities Research and Education Foundation (SCUREF) to work with four Minority Serving Institutions to identify stakeholder strengths and expectations for nuclear materials management and resource needs to improve the country's outlook for nuclear waste solutions.

### List of Partners

### Areas of Expertise

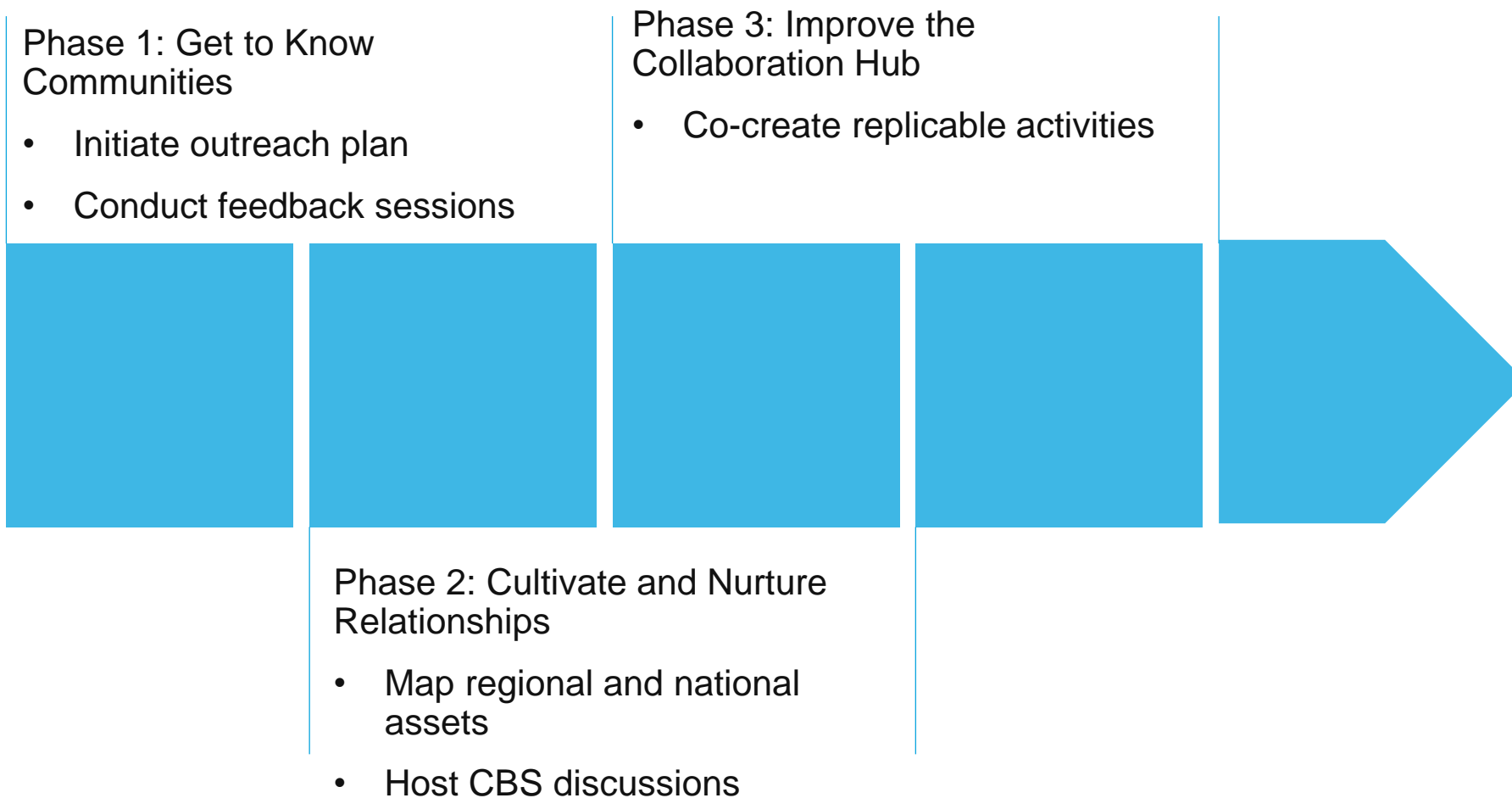
American Nuclear Society	Founded in 1954, professional society of 10,000 nuclear science and technology professionals and university students
SCUREF	Thirty-five-year-old consortium supporting workforce development in STEM fields with extensive project management experience.
Northern Arizona University	Committed to becoming the largest university serving Native American/Indigenous communities
University of New Mexico	Serving Hispanic American and rural communities; host of the only nuclear engineering program at a predominantly Hispanic serving university
South Carolina State University	Historically black, land-grant university serving African American and rural communities; host of the only nuclear engineering program at an historically black university
City College of New York	Harlem-based college serving a diverse urban community

# Areas of Engagement

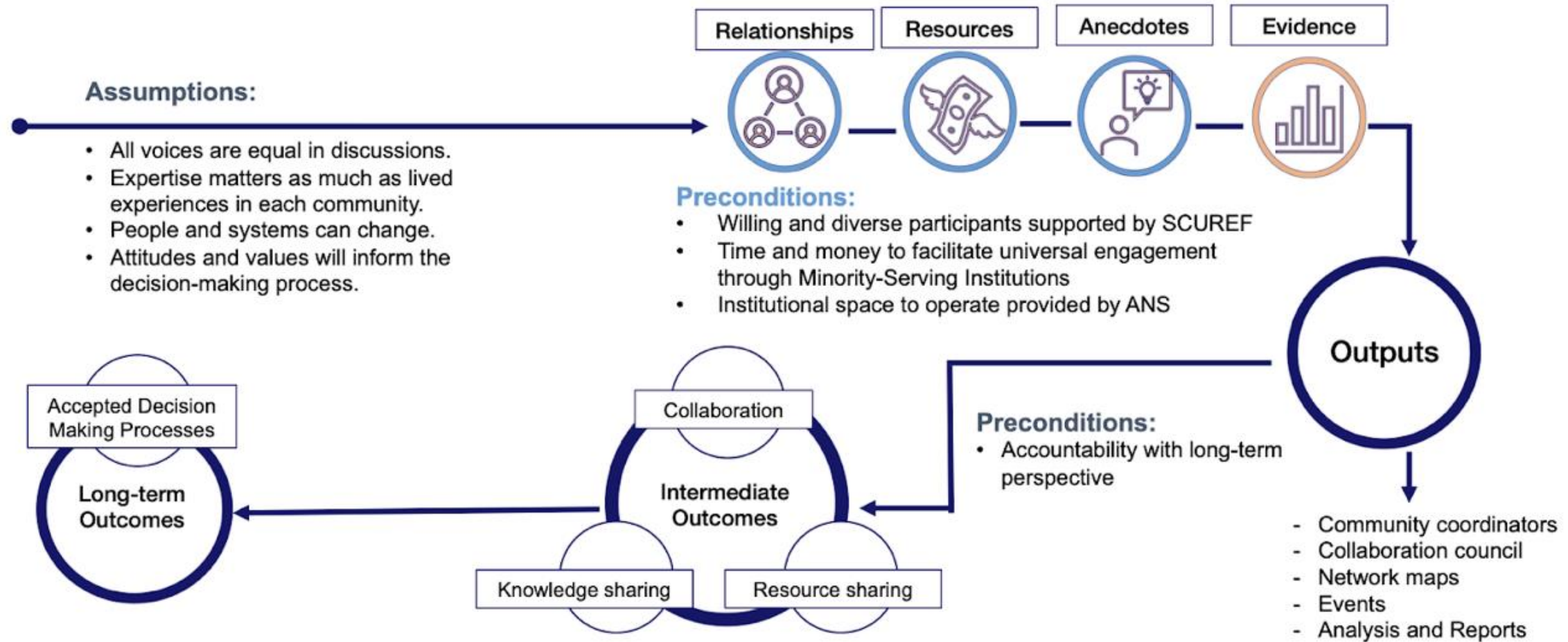


- Asset mapping allows the ANS partners to assess by geography and by constituent groups.
- Asset-Based Collaboration provides participatory appraisals in an iterative process to tackle the definition of a consent-based process for the siting of consolidated interim storage

# Overview of Process



# ANS Approach to Consent-Based Siting



**Impact:** Communities improve the consent-based siting process with DOE by mobilizing existing, often unrecognized, assets. Iterative efforts help resolve the nuclear waste challenge and generate local social and economic benefits.

# Overview of Methods

Activities and outreach will be evaluated using:

- Searchable results from in-depth interviews by the Community Coordinators.
- Assessment of third-party support, constituency networks, channels of reach, and location size of organizations of affiliation
- Forced-choice and open-ended perception questions gather insights into attitudes about both consent-based decision making as well as the potential for consolidated interim storage.



# Outcomes Expected



Through out the process, ANS, SCUREF and partnering MSIs will capture lessons regarding attitudes and values relevant to the transport and interim storage of spent nuclear materials, including knowledge of Native American, African American, Hispanic American, urban and rural constituencies and cultures.



The resulting Collaboration Council and Asset Based Collaboration Hub will create lasting relationships among relevant groups with stakes in the future of consolidated interim waste options. This will provide ongoing connectivity to ANS educational resources like Navigating Nuclear, SmartBrief, and local and student section activities.

# Thank You!

For questions or comments related to this consortium, please contact:

Andrew Smith, Director of Communication,  
American Nuclear Society  
[asmith@ans.org](mailto:asmith@ans.org)

