



UNITED STATES ENVIRONMENTAL PROTECTION AGENCY

REGION IX

75 Hawthorne Street
San Francisco, CA 94105

Via Email Delivery

January 26, 2011

Ms. Jenny Marek
U.S. Fish and Wildlife Service
2493 Portola Road, Suite B
Ventura, CA 93003

Mr. Jeff Humble
California Department of Fish and Game
PO Box 1179
Ventura, CA 93002

Ms. Mary Meyer
California Department of Fish and Game
226 West Ojai Avenue, Suite 101
PMB 501
Ojai, CA 93023

Subject: EPA Radiological Study of the Santa Susana Field Laboratory Area IV and the Northern Buffer Zone; *Quarterly Biological Monitoring Report #2*

Dear Ms. Marek, Mr. Humble, and Ms. Meyer:

The United States Environmental Protection Agency (US EPA) is continuing its radiological study at Area IV and the Northern Buffer Zone of the Santa Susana Field Laboratory (SSFL) located in eastern Ventura County. EPA is conducting this project pursuant to federal legislative mandate HR2764, the Consolidated Appropriations Act of 2008, and the authority granted under the Comprehensive Environmental Response, Compensation, and Liability Act (CERCLA). Attached is EPA's Quarterly Biological Monitoring Report #2 dated January 22, 2011. The purpose of this report is to provide a quarterly monitoring update, which summarizes:

- Project Activities and Operations,
- Biological Surveys, Monitoring, and Impacts to Federally Listed Species and their Critical Habitat, if applicable,

- Biological Surveys, Monitoring, and Impacts to State listed species and Species of Special Concern,
- Riparian Area impacts, and
- Issues Encountered and Adaptive Management.

The attached report covers EPA project activities during the period from October 5, 2010 to January 6, 2011. EPA intends to issue biological monitoring status reports to document our ongoing compliance with the Biological Opinion concerning the subject project issued by the U.S. Fish and Wildlife Service (USFWS) on May 25, 2010 and our compliance with the substantive technical requirements of the California Endangered Species Act and the California Department of Fish and Game Code Section 1602 (riparian protection).

Please give me a call at (415) 947-4148 if you have any questions regarding the information provided herein.

Sincerely,



Craig Cooper
Project Manager
SSFL Site

Cc: Stephie Jennings, Department of Energy
 Mark Malinowski, California Department of Toxic Substances Control

Attachment: Quarterly Biological Monitoring Report #2 dated January 22, 2010.

QUARTERLY BIOLOGICAL MONITORING REPORT #2

RADIOLOGICAL STUDY OF THE SANTA SUSANA FIELD LABORATORY AREA IV AND NORTHERN BUFFER ZONE

Prepared for:

U.S. Environmental Protection Agency Region 9
75 Hawthorne Street
San Francisco, CA 94105

Prepared by:

HydroGeoLogic, Inc.
5800 Woolsey Canyon Road
Building 204
Canoga Park, CA 93104

and

Envicom Corporation
28328 Agoura Road
Agoura Hills, CA 91301

January 22, 2010

INTRODUCTION

The U.S. Environmental Protection Agency (EPA) is conducting a radiological characterization of a portion of the Santa Susana Field Laboratory (SSFL), located in the Simi Hills of eastern Ventura County, California (**Figure 1**). The two areas at SSFL being characterized are Area IV, a 290-acre administrative section where the U.S. Department of Energy and its contractors once operated several nuclear reactors and associated fuel facilities and laboratories, and the Northern Buffer Zone (NBZ), a 182-acre area with no history of development that lies adjacent to Area IV. These two areas compose the Area IV study area.

Several activities associated with the radiological study of the Area IV Study Area have the potential to impact federally listed species and their critical habitat, as well as resources protected under California State law. These activities include vegetation cutting, gamma scanning, geophysical survey, surface and subsurface soil sampling, groundwater monitoring well sampling, surface water and sediment sampling. The scope of these project activities is described in further detail in the Biological Assessment (BA) prepared for EPA by HydroGeoLogic, Inc. (HGL), and Envicom Corporation dated February 12, 2010. To minimize the impact to natural resources and riparian habitat within the study area, protection measures were developed and are being implemented as scanning activities progress. These measures are detailed in Appendices E, G, and N of the Site Management Plan (dated September 24, 2010).

EPA is conducting this project pursuant to federal legislative mandate HR2764, the Consolidated Appropriations Act of 2008, and the authority granted under the Comprehensive Environmental Response, Compensation, and Liability Act (CERCLA). Formal consultation under Section 7 of the Endangered Species Act has been conducted with the U.S. Fish and Wildlife Service (USFWS), and a Biological Opinion was issued on May 25, 2010. The USFWS Biological Opinion identified Avoidance and Minimization Measures (AMMs) keyed to each of the proposed activities and Federally listed species with potential to occur within the Action Area. EPA has agreed to implement the various components of the Radiological Survey in compliance with the Biological Opinion and its requirements. Although not under discretionary approval, it is also EPA's goal to comply with the substantive technical requirements of State of California natural resource protection laws, such as the California Endangered Species Act and California Fish and Game Code Section 1602 for impacts to riparian resources. Additional applicable biological resource laws or regulations to which the project is adhering include the Federal Migratory Bird Treaty Act and California Fish and Game Code 3503 and 3503.5 (for protection of nesting birds).

The purpose of this report is to provide a quarterly monitoring update, which summarizes 1) Project Activities and Operations, 2) Biological Surveys, Monitoring, and Impacts to Federally Listed Species and their Critical Habitat, if applicable, 3) Biological Surveys, Monitoring, and Impacts to State listed species and Species of Special Concern, 4) Riparian Area impacts, and 5) Issues Encountered and Adaptive Management. The report covers the period from October 6, 2010, to January 6, 2011.

PROJECT ACTIVITIES AND OPERATIONS

The Area IV Study Area is subdivided into Subareas 3, 5A, 5B, 5C, 5D, 6, 7, 8, NE, and NW (**Figure 2**). The subareas have been divided into 76 Survey Sections (SS). The SSs include roads. To date, EPA has begun conducting all six primary project tasks over portions of the study area: vegetation cutting, gamma scanning, geophysical surveying, surface and subsurface soil sampling, groundwater monitoring well sampling, and surface water and sediment sampling.

Vegetation within the study area is being cut or trimmed to allow access to vehicles and equipment, and to provide clearance for gamma scanning equipment at optimum levels of sensitivity. Vegetation cutting protocols were prepared and are found in Appendix E of the Site Management Plan. Vegetation cutting has been completed in Subareas 5A, 5B, and 5C. Subarea 5D has been cut except for SS-59 (**Plate 1A**). A portion of Subarea 8 has been cut: specifically SS-48, SS-49, SS-50, SS-51, SS-52, and portions of SS-43 and SS-46 (**Plates 1B and 1C**). Standard equipment used during vegetation cutting includes weed whackers, lopping shears, chainsaws, skid steer with mower and fork-lift attachments, chipper, and a front-loading tractor for the safe removal of poison oak (*Toxicodendron diversilobum*) branches (**Plate 1D**).

Gamma scanning is being accomplished using various scanning devices, depending on site conditions. Scanning equipment includes two ERGS off-road forklift vehicles, mule-mounted scanning devices, a handcart scanner, and handheld scanners. Gamma scanning has continued in Subareas 5A, 5B, 5C, and 5D, although scanning has not yet begun in the steep southern portion of 5D (SS-49, SS-51, SS-52, SS-58, SS-59) (**Plates 2A and 2B**). Gamma scanning has also begun in cleared portions of Subarea 8. Some areas will need to be rescanned due to data gaps that occur during gamma scanning.

Geophysical surveys have continued in Subareas 5A, 5B, 5C, and in the portion of 5D outside of the steep southern portion of 5D described above. Geophysical Surveys have also begun in cleared portions of Subarea 8 (**Plate 2C**).

Surface and subsurface soil sampling commenced in November 2010 and has been conducted in Subareas 5B and 5C (**Plate 2D**). Equipment used for this task includes a mobile drilling/coring rig and hand tools. The number of sampling points within each SS varies depending on the findings of the Historical Site Assessment (HSA) and the results of the gamma scanning surveys already conducted. The sampling procedure at each sample point involves retrieving a surface sample of approximately 1 gallon of soil from 0 to 6 inches below ground surface (bgs). A subsurface soil sample consisting of a core sample obtained from a depth of 10 feet bgs is collected at a subset of the surface sampling sites.

Surface water and sediment sampling began in December 2010 (**Plate 3A**). The sampling procedure is similar to the surface soil sampling protocol, with approximately 1-gallon of sediment collected using hand tools at various drainage sites throughout the Area IV Study Area. This activity results in light foot traffic.

No monitoring well sampling was conducted during the monitoring period.

BIOLOGICAL CLEARANCE SURVEYS, MONITORING, AND IMPACTS

Clearance Survey Methodology

Before project activities commenced within each of the subareas, one of the USFWS-approved biologists from Envicom (Scott Werner, Jim Anderson, or Carl Wishner) conducted clearance surveys to document the presence/absence and location of Federal and State special-status biological resources and riparian habitat (**Figure 3**). The locations of the resources were marked in the field with conspicuous flagging and mapped using Global Positioning System (GPS) technology and Geographic Information System (GIS) software. Mapped resources are shown on **Figures 4 through 6**. Clearance survey monitoring forms (Attachment 1) are prepared for each clearance survey to document the resources observed and to identify

which AMMs included in the Biological Opinion are applicable to future activities occurring within the survey area.

Biological Monitoring Methodology

One or more of the approved biological monitors from Envicom are present on a daily basis. The monitors attend the safety meeting with crews and monitor project activities. During this reporting period, the following primary project tasks were conducted: included vegetation cutting, gamma scanning, geophysical surveying, surface and subsurface soil sampling, and surface water and sediment sampling. The biological monitor(s) work alongside the field crews to point out the locations of special-status biological resources and, in some cases, assist the crews in avoiding impacts. Daily biological monitoring forms (Attachment 2) are prepared to document the activities monitored, any special-status biological resources encountered, and impacts resulting from project activities. Any further recommendations on reducing impacts to biological resources also are reported on this form. In compliance with the Biological Opinion, all project-related crews participate in an environmental education program administered by the USFWS approved biologist to inform participants of the sensitive biological resources within the study area and the AMMs to be employed.

Clearance Survey and Monitoring Results for Federally Listed Species

Only one federally listed species addressed in the Biological Opinion has been positively identified in the study area: Braunton's milkvetch. The observed locations of Braunton's milkvetch are illustrated on Figures 4 through 7 and discussed in more detail below. **Table 1** summarizes the locations where the species has been detected during either clearance surveys or monitoring.

Braunton's milkvetch (Astragalus brauntonii); Federally Endangered

This species has been detected in Subareas 5B (SS-10), 5C (SS-7), 5D (SS-51, SS-52, and SS-58), and 8 (SS-51 and SS-52). Sections SS-51, SS-52, and SS-58 contain the greatest densities of Braunton's milkvetch in the study area (**Plates 3B and 3C**). These sections overlap with Braunton's milkvetch Critical Habitat Unit 1d. During the monitoring period, forty-two (42) milkvetch plants were incidentally cut, knocked over, or damaged during vegetation cutting in the Area IV Study Area. **Table 2** provides a description of the plants impacted in each SS. Some preliminary testing of gamma scanning equipment has been conducted in SS-51 and SS-58 but no impacts to Braunton's milkvetch have resulted from this activity. No other project activities have been conducted within the milkvetch Critical Habitat Unit 1d.

Critical Habitat Unit 1d for Braunton's milkvetch covers portions of SS-51, SS-52, SS-55, SS-56, SS-58, and SS-59. The Primary Constituent Elements (PCEs) for Braunton's milkvetch are (1) calcium carbonate soils derived from marine sediment; (2) low proportion (<10%) of shrub cover directly around the plant; and (3) chaparral and coastal sage scrub communities characterized by periodic disturbances that stimulate seed germination (for example, fire, flooding, erosion) and reduce vegetative cover. These PCEs are found in SS-51, SS-52, SS-58, and SS-59 where the greatest density of milkvetch occurs. Within this area, the calcium carbonate soils remain intact, and Vegetation Cutting activities have reduced the cover of shrubs rebounding from the 2005 Topanga Fire such as toyon (*Heteromeles arbutifolia*), chamise (*Adenostoma fasciculatum*), and sugar bush (*Rhus ovata*). This disturbance has not substantially altered the PCEs or the condition of the milkvetch Critical Habitat.

***Dudleya* species: Conejo dudleya (*Dudleya abramsii* subsp. parva [=D. parva]), Santa Monica Mountains live-forever (*D. cymosa* subsp. ovatifolia [inclusive of *D. cymosa* subsp. agourensis]), and marcescent dudleya (*D. cymosa* subsp. marcescens); all Federally Threatened**

None of the Federal or State listed dudleya species have been encountered. Many individual dudleya that resemble *D. lanceolata* (no protection status) have been documented but were unidentifiable because the monitoring period took place outside of the flowering period for these species. Therefore all unidentifiable dudleya are flagged and protected during project activities. During this monitoring period, species were flagged in Subareas 8 (SS-43, SS-44, SS-46 and SS-48); and 5D (SS-58) (Table 1). No flagged dudleya have been harmed during project activities.

Vernal Pool Branchiopods: Riverside fairy shrimp (Streptocephalus woottoni), Federally Endangered, and vernal pool fairy shrimp (Branchinecta lynchi), Federally Threatened

In Subarea 5C (SS-7), unidentified fairy shrimp were observed in the previously identified seasonal wetland, as well as a much smaller nearby wetland not previously identified as vernal pool branchiopod habitat (Figure 5) (Plates 3D and 4A). These pools collected water during the heavy rainfall events of December 2010 and were inspected for fairy shrimp activity by the monitoring biologist on January 5, 2011. A presence/absence survey for Riverside fairy shrimp and vernal pool fairy shrimp has not been conducted, and none is currently planned because no activities resulting in soil disturbance activities are planned during wet phases are planned; sampling in these pools will be conducted only during the dry phase.

California red-legged frog (Rana draytonii); Federally Threatened

Project activities occurred in proximity to four areas identified in the Biological Assessment as potentially suitable habitat for the California red-legged frog. These habitat areas consist of three outfall collection pools in Subareas 6 (SS-38) and 8 (SS-43, SS-46), and an ephemeral drainage in the eastern NBZ. A 300-foot buffer was created around these features using a GIS, and the biological monitor supervised all project activities within the buffer area. During the monitoring period, vegetation cutting and surface water and sediment sampling were conducted in these areas. Water was present in all three areas. Pacific chorus frogs (*Pseudacris regilla*) were observed in the NBZ and SS-46 habitat areas, but no red-legged frogs were observed. A small (0.84 acre [ac]) portion of the Critical Habitat Unit VEN-3, Upper Las Virgenes Canyon, occurs as northern mixed chaparral in Subarea 5D (SS-52 and SS-59). The portion within SS-52 has been subjected to vegetation cutting using hand tools. The majority of California red-legged frog Critical Habitat occurs in Subarea 5D (SS-59), in which no activities have yet occurred.

Least Bell's vireo (Vireo bellii pusillus); Federally Endangered

A riparian habitat strip identified as potential least Bell's vireo habitat in Subarea 5B (SS-12) was surveyed and flagged on August 13, 2010, as off-limits to project activities until the end of the Least Bell's vireo breeding season on October 1. No least Bell's vireo have been observed in the study area during clearance surveys or monitoring. Vegetation cutting, gamma scanning, and geophysical surveys were conducted in the Least Bell's vireo potential habitat after October 1, 2010.

California gnatcatcher (Polioptila californica californica); Federally Threatened

Before project activities commenced, a protocol survey and habitat assessment was conducted (April 9 to June 4, 2010) for California gnatcatcher within the study area. This comprehensive survey was completed in compliance with USFWS protocol guidelines under permissible weather conditions. Though

habitat suitable for the gnatcatcher were observed in Subareas 5D (SS-51, SS-52, and SS-58), and 8 (SS-43, SS-48, SS-49, SS-51, and SS-52), no California gnatcatchers were observed.

Table 1
List of Federally Listed Resources and Critical/Suitable Habitat
Observed in Survey Sections during the Monitoring Period

Species/Resource	Survey Section	Subarea
Braunton's milkvetch	SS-7	5C
Braunton's milkvetch	SS-10	5B
Braunton's milkvetch	SS-51	5D/8
Braunton's milkvetch	SS-52	5D/8
Braunton's milkvetch	SS-58	5D
<i>Dudleya</i> sp.	SS-43	8
<i>Dudleya</i> sp.	SS-44	8
<i>Dudleya</i> sp.	SS-46	8
<i>Dudleya</i> sp.	SS-48	8
<i>Dudleya</i> sp.	SS-58	5D
Vernal pool branchiopod habitat occupied by unidentified branchiopods	SS-7	5C
California Red-legged Frog potentially suitable habitat	SS-38	6
California Red-legged Frog potentially suitable habitat	SS-43	8
California Red-legged Frog potentially suitable habitat	SS-46	8
California Red-legged Frog potentially suitable habitat	n/a	NBZ
California Red-legged Frog Critical Habitat	SS-52	5D
Coastal California Gnatcatcher habitat	SS-43	8
Coastal California Gnatcatcher habitat	SS-48	8
Coastal California Gnatcatcher habitat	SS-49	8
Coastal California Gnatcatcher habitat	SS-51	5D/8
Coastal California Gnatcatcher habitat	SS-52	5D/8
Coastal California Gnatcatcher habitat	SS-58	5D
Least Bell's Vireo habitat	SS-12	5B

Table 2
List of Federally Listed Resources or Critical Habitat Impacted by Project Activities

Species/Resource (# impacted)	Survey Section	Date recorded	Associated project activity	Impact	Description
Braunton's milkvetch (1)	SS-10	12/3/10*	SS or GS*	Damaged	One main branch bent over. *Date and cause of damage not known.
Braunton's milkvetch (25)	SS-51	11/5/10-11/15/10	VC	Damaged or knocked down	Branches damaged or older brittle plants knocked down.
Braunton's milkvetch (9)	SS-52	11/17/10-11/22/10	VC	Damaged or knocked down	Branches damaged or older brittle plants knocked down.
Braunton's milkvetch (1)	SS-58	10/12/10	VC	Cut	One plant inadvertently cut at base of stem.
Braunton's milkvetch (6)	SS-58	10/18/10, 11/4/10	VC	Damaged or bent	Plants sustained some branch damage, most are older individuals with little to no fresh leaf growth
Braunton's milkvetch Critical Habitat Unit 1d	SS-51 SS-52 SS-58	October 2010 through January 2011	VC	Trimmed	Most unprotected plant species trimmed to 6" above ground except trees and some large shrubs.

Clearance Surveys and Monitoring Results for State Protected Biological Resources and Nesting Birds

The Santa Susana tarplant is the only State-listed species observed during the clearance surveys and biological monitoring. However, other State-protected biological resources have been observed. The location of Santa Susana Tarplant and other State-protected biological resources within the Action Area are illustrated on Figures 4, 5, and 6. The following is a more detailed description of the observations and impacts associated with State-protected biological resources. A summary of the State-Sensitive resources observed are listed by Subarea and SS in **Table 3**.

Santa Susana tarplant (Deinandra minthornii); State Rare, CNPS List 1B.2

This species is locally common in sections of Area IV with sandstone outcrops. Only one plant was impacted by project activities during the monitoring period (**Table 4**). Most of the vegetation cutting did not take place in tarplant areas; activities that did take place in occupied tarplant habitat successfully avoided the clearly flagged plants.

Plummer's mariposa lily (Calochortus plummerae); CNPS List 1B.2

Unidentified *Calochortus* fruiting structures characteristic of Plummer's mariposa lily were identified in SS-49 and SS-51 in November and December. This perennial bulbiferous herb blooms May-July and is often seen in recently burned areas. Observed locations have been recorded and will be inspected during 2011 for specific identification. The plants will be protected from project activities until the species can be confirmed. Additionally, further protection will be provided if they are confirmed to be the rare Plummer's type.

Malibu baccharis (Baccharis malibuensis); CNPS List 1B.1

Malibu baccharis has been recorded in Subareas 5D and 8 on the hilly terrain at the extreme southern end of the study area (**Plate 4B**). It is the codominant species with chamise in certain areas of the unburned northern mixed chaparral on SS-49. Like Santa Susana tarplant, Malibu baccharis exhibits a growth form where the branches grow from a central base, and the plant is short, compact, and not easily damaged by project equipment when properly marked. Though about 100 plants have been inadvertently trimmed or damaged during vegetation cutting, the majority of these are still alive and well rooted because of the basal growth form.

Southern California black walnut (Juglans californica); CNPS List 4.2

A population of southern California black walnut trees is located along the north-facing slopes of Subarea 5D (SS-50, SS-51, SS-52, and SS-58) and 8 (SS-48, SS-49, SS-50, SS-51, and SS-52). The 2005 Topanga Fire burned most of the mature walnut trunks, but many of the trees have resprouted from the burned trunk bases. To create the clearance required for the scanning equipment, some of the new trunks growing outward required pruning to the standard 6 to 18 inches above ground-level, but many trunks growing vertically have been left intact.

Coast horned lizard (Phrynosoma blainvillii); State Species of Special Concern

Suitable habitat was identified in most of the undeveloped survey sections of the study area, and coast horned lizards were observed in SS-49, SS-51, and SS-58. Some individuals were relocated nearby, out of harm's way, while others were held and released later the same day after it was clear that the vegetation cutting crew was finished working in that particular area (**Plates 4C and 4D**).

Silvery legless lizard (Anniella pulchra pulchra); State Species of Special Concern

Suitable habitat was identified in many of the undeveloped survey sections of the study area. No silvery legless lizards have been observed.

Coast patch-nosed snake (Salvadora hexalepis virgultea); State Species of Special Concern

Suitable habitat was identified in many of the undeveloped survey sections of the study area. No coast patch-nosed snakes have been observed.

Cooper's Hawk (Accipiter cooperii); State Watch List

Cooper's hawks have been observed in the study area, although no nesting has been documented. Suitable nesting habitat likely exists in the oak woodlands located in the northwestern and southwestern portions of the study area.

Golden eagle (Aquila chrysaetos); State Watch List, Fully Protected

Golden eagles were seen soaring over the western portion of the study area. An historical nest site located on the SSFL property boundary in the NBZ was briefly monitored on two separate days in December 2010 and January 2011 but appeared to be inactive. If the nest becomes active in the coming months, an appropriate nesting-bird buffer will be established and the biological monitor will supervise all project activities within the buffer to minimize any disturbances to the eagles.

Loggerhead shrike (Lanius ludovicianus); State Species of Special Concern (Nesting)

One shrike (likely a winter visitor) was observed on August 26, 2010 within Subareas 5A (SS-15) and Subarea 5D (SS-54) and was still in the area at least through October 1, 2010. Loggerhead shrikes inhabit open country with short vegetation and breed in isolated trees or large shrubs. In coastal Ventura County they are mainly found as winter visitors.

Southern California rufous-crowned sparrow (Aimophila ruficeps canescens); State Watch List

Southern California rufous-crowned sparrows are year-round residents in the Simi Hills and Santa Susana Mountains, typically nesting at or near ground-level near rocky outcrops and associated low-growing shrubby and herbaceous cover. This species was observed in NBZ-E while monitoring the surface water and sediment sampling crew.

San Diego desert woodrat (Neotoma lepida intermedia); State Species of Special Concern

Suitable habitat for the woodrat was identified in much of the study area, especially areas that contain shrubby vegetation and rocky outcrops. Incidental sightings of big-eared woodrat (*Neotoma macrotis*) were recorded in SS-49. No San Diego desert woodrats have been found in the project area.

Table 3
List of State-Sensitive Resources Observed during the Monitoring Period, Grouped by Area

Species/Resource	Survey Section	Subarea
Santa Susana tarplant	SS-43	8
Santa Susana tarplant	SS-44	8
Santa Susana tarplant	SS-48	8
Santa Susana tarplant	SS-58	8
Calochortus sp. (likely Plummer's)	SS-49	8
Calochortus sp. (likely Plummer's)	SS-51	5D/8
Malibu baccharis	SS-49	8
Malibu baccharis	SS-51	5D/8

Species/Resource	Survey Section	Subarea
Malibu baccharis	SS-52	5D/8
Malibu baccharis	SS-58	5D
Southern California black walnut	SS-48	8
Southern California black walnut	SS-49	8
Southern California black walnut	SS-50	5D/8
Southern California black walnut	SS-51	5D/8
Southern California black walnut	SS-52	5D/8
Southern California black walnut	SS-58	5D
Coast horned lizard	SS-49	8
Coast horned lizard	SS-51	5D/8
Coast horned lizard	SS-58	5D/8
Loggerhead shrike (non-nesting)	SS-15	5A
Loggerhead shrike (non-nesting)	SS-54	5D
Southern California Rufous-crowned sparrow	n/a	NBZ-E
Riparian area	SS-1	5B, 5C
Riparian area	SS-12	5C

Table 4
List of State-sensitive Resources Impacted

Species/Resource (# impacted)	Survey Section	Date recorded	Associated project activity	Impact	Description
Santa Susana tarplant (1)	SS-43	10/22/10	VC	Trampled/uprooted	Small clump along only footpath into area. 1 plant lost.
Malibu baccharis (13)	SS-58	10/14/10-10/18/10	VC	Damaged	Plants trimmed and/or uprooted inadvertently.
Malibu baccharis (10)	SS-51	11/9/10-11/10/10	VC	Damaged	Plants damaged by nearby brush removal.
Malibu baccharis (6)	SS-52	11/17/10-11/22/10	VC	Trimmed	Plants trimmed inadvertently.
Malibu baccharis (72)	SS-49	12/1/10-1/4/10	VC	Trimmed/Damaged	Some plants inadvertently trimmed back or damaged during brush removal. Majority of these plants still alive and well rooted.
Southern California black walnut (3)	SS-48	Oct-Dec	VC	Trimmed	Mature trees trimmed.

Southern California black walnut (2)	SS-49	Oct-Dec	VC	Trimmed	Mature trees trimmed.
Southern California black walnut (~20)	SS-51	Oct-Dec	VC	Trimmed	Resprouts from 2005 fire trimmed.
Southern California black walnut (6)	SS-52	Nov-Dec	VC	Trimmed	Resprouts from 2005 fire trimmed.
Southern California black walnut (~30)	SS-58	Oct-Dec	VC	Trimmed	Resprouts from 2005 fire trimmed.
Coast horned lizard (1)	SS-49	12/8/10	VC	Relocated nearby	Adult relocated 30 feet away, off SS-49 in similar habitat.
Coast horned lizard (2)	SS-51	11/5/10	VC	Held temporarily	2 juveniles held and then released at end of day in same location.
Coast horned lizard (1)	SS-51	11/9/10	VC	Held temporarily	1 juvenile held and then released at end of day in same location.
Coast horned lizard (1)	SS-58	10/14/10	VC	Relocated nearby	Adult relocated nearby, off Area IV in similar habitat.
Coast horned lizard (3)	SS-58	10/26/10	VC	Relocated nearby	2 adults and 1 juvenile relocated nearby, in similar habitat.
Coast horned lizard (4)	SS-58	11/4/10	VC	Relocated nearby	4 juveniles relocated nearby, off Area IV in similar habitat.

Clearance Surveys and Monitoring Results for Riparian Habitat

The following project activities associated with the four previously identified ephemeral drainages (SS-1 and SS-12) were conducted during the monitoring period: vegetation cutting, gamma scanning, geophysical surveys, and soil sampling. Shrub species associated with these areas are primarily mule fat (*Baccharis salicifolia*) and willow (*Salix* sp.), with coast live oak (*Quercus agrifolia*) and coyote brush (*Baccharis pilularis*) growing on the banks. The drainages were not inspected by the biologist during the December rainfall events, but may have contained a small amount of pooled water at that time. Otherwise, no significant flow was observed. Vegetation cutting in these areas was performed using hand tools, and plants located within or on the banks of the drainages were left standing, with some trimming being conducted near ground level to allow for scanning. Additional details on the activities conducted within each of the four drainages is provided in **Table 5**. These riparian areas do not support enough water to be considered suitable habitat for the California red-legged frog. Regardless, activities within the riparian habitat have been conducted under the supervision of a qualified biological monitor with experience identifying California red-legged frog species and habitat.

Project activities have been conducted at or near four additional locations listed in Table 5 that have been identified as potential California red-legged frog habitat with riparian characteristics. One is a manmade impoundment that functions as a small, ephemeral freshwater wetland (SS-38), two are lined collection basins with minimal riparian vegetation (found in SS-43 and SS-46), and the fourth is an ephemeral stream in the eastern NBZ that has a bedrock streambed and contains a significant amount of standing or running water during part of the year. Additional riparian habitat exists in the NBZ and adjacent survey sections, but it has not yet been characterized because major project activities have not yet commenced in these areas. Sediment sampling (SWSS) has been conducted by field crews equipped with hand tools in several drainages in the NBZ and adjacent survey sections under the supervision of the biological monitor. Before the survey, all locations and survey procedures were reviewed by the biologist, and monitoring requirements were satisfied in accordance with the AMMs listed in the Biological Opinion. Due to the relatively small ground disturbance required for the SWSS task, biological monitoring for SWSS was only conducted at those riparian sites (SS-38 and NBZ-E) with potential habitat for California red-legged frog.

Table 5
Activities Conducted with Monitoring within Riparian Habitat

Location		Description	Description of Activities Performed	Significant Impacts
Subarea	SS			
5C	SS-1	500' long by 3-6' wide	GP, SS	None
5C	SS-1	200' long by 3-6' wide	GP, SS	None
5C	SS-1	235' long by 3-6' wide	GP, SS	None
5A/5B	SS-12	450' long by 3-6' wide	VC, GS (mule)	None
6	SS-38	Ephemeral freshwater wetland (15' long by 15' wide)	SWSS	None
8	SS-43	Lined collection basin (30' long by 40' wide)	VC	None
8	SS-46	Lined collection basin (30' long by 40' wide)	VC	None
NBZ-E		Bedrock-lined ephemeral creek	SWSS	None

GP –geophysical surveying

GS – gamma scanning

SS – soil sampling

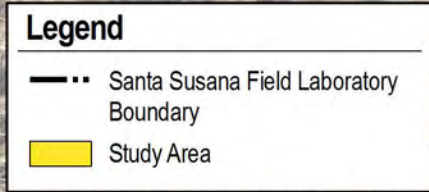
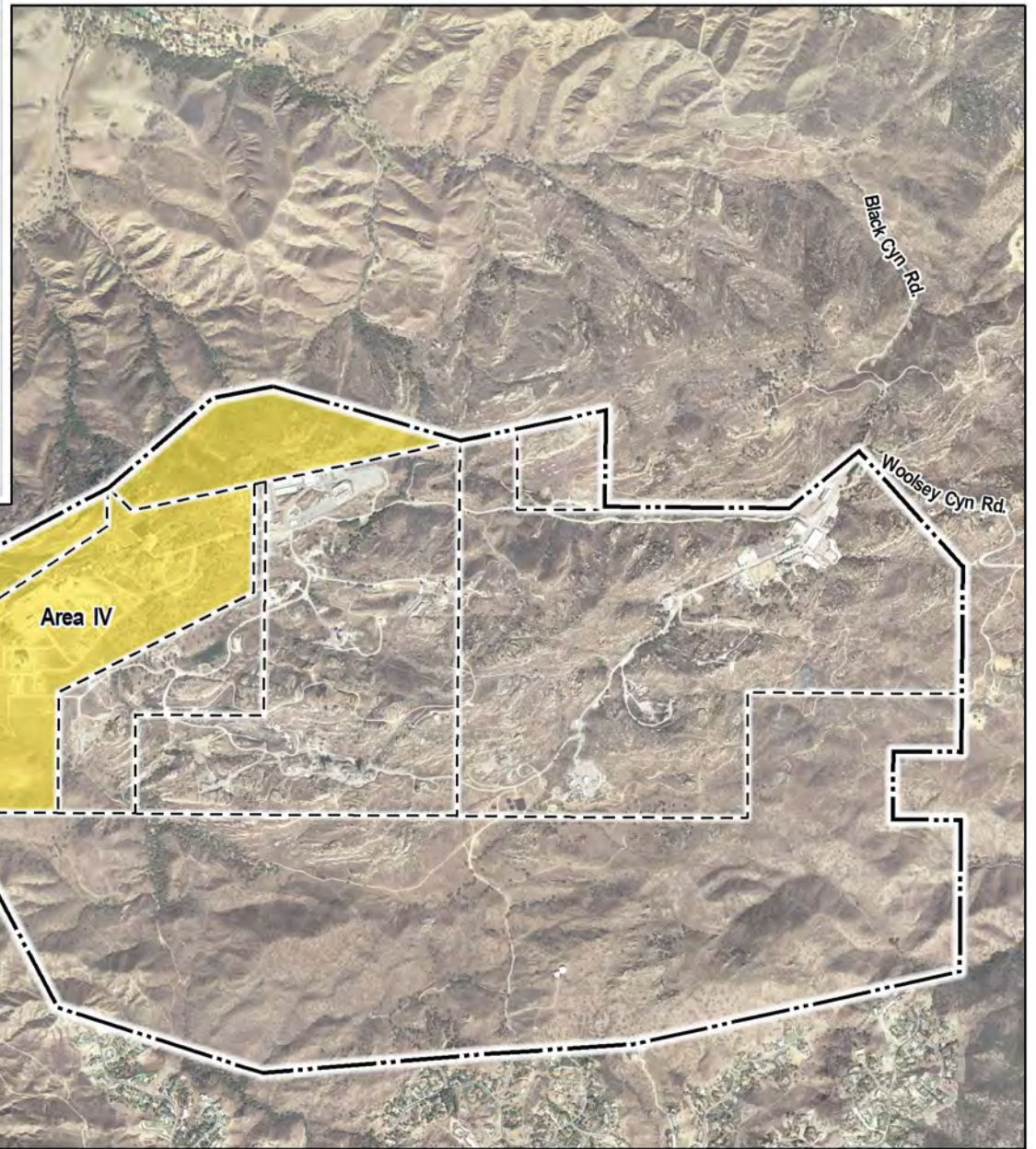
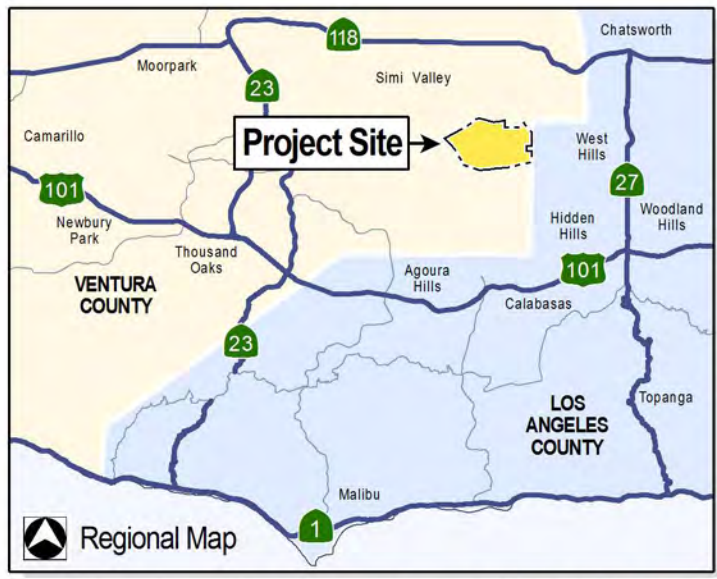
VC – vegetation cutting

SWSS – surface water/sediment sampling

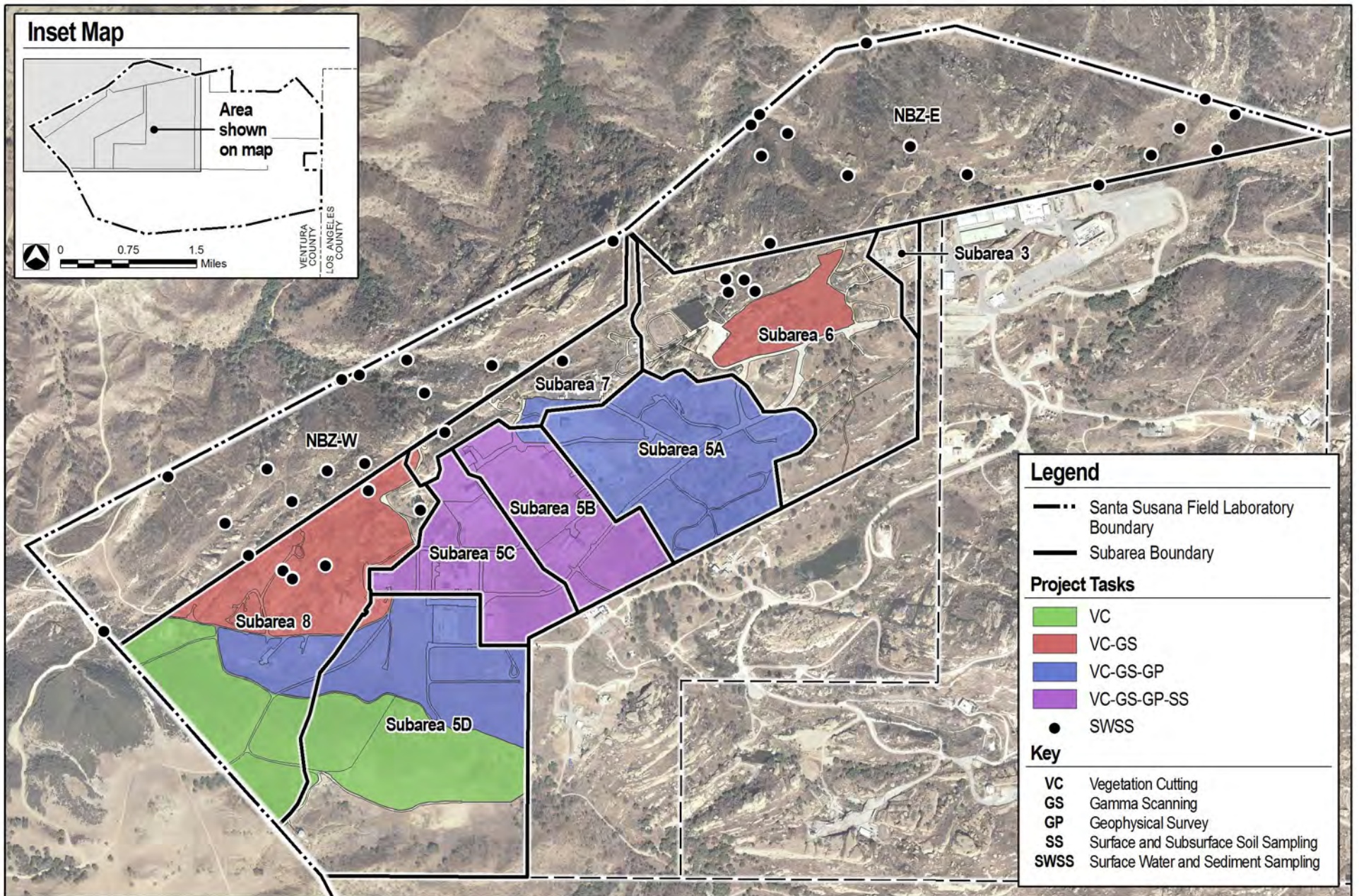
Issues Encountered and Adaptive Management

To date there have been no issues with implementing the terms, conditions, AMMs, or other protective measures required by USFWS in the Biological Opinion. At this time we have no recommendations for modifying the terms and conditions to enhance the protection of Federal-listed and State-Listed/Sensitive species.

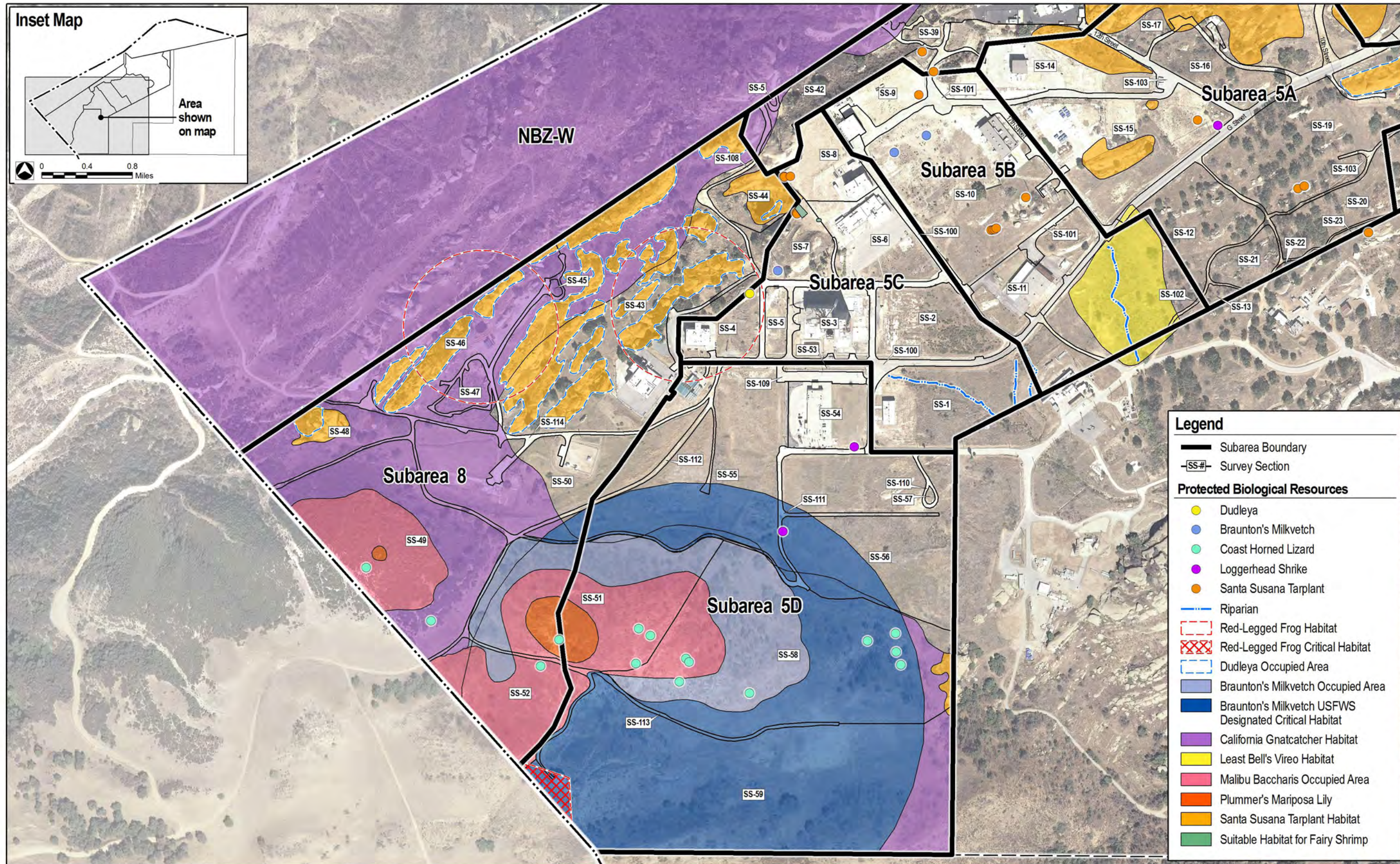
Figures



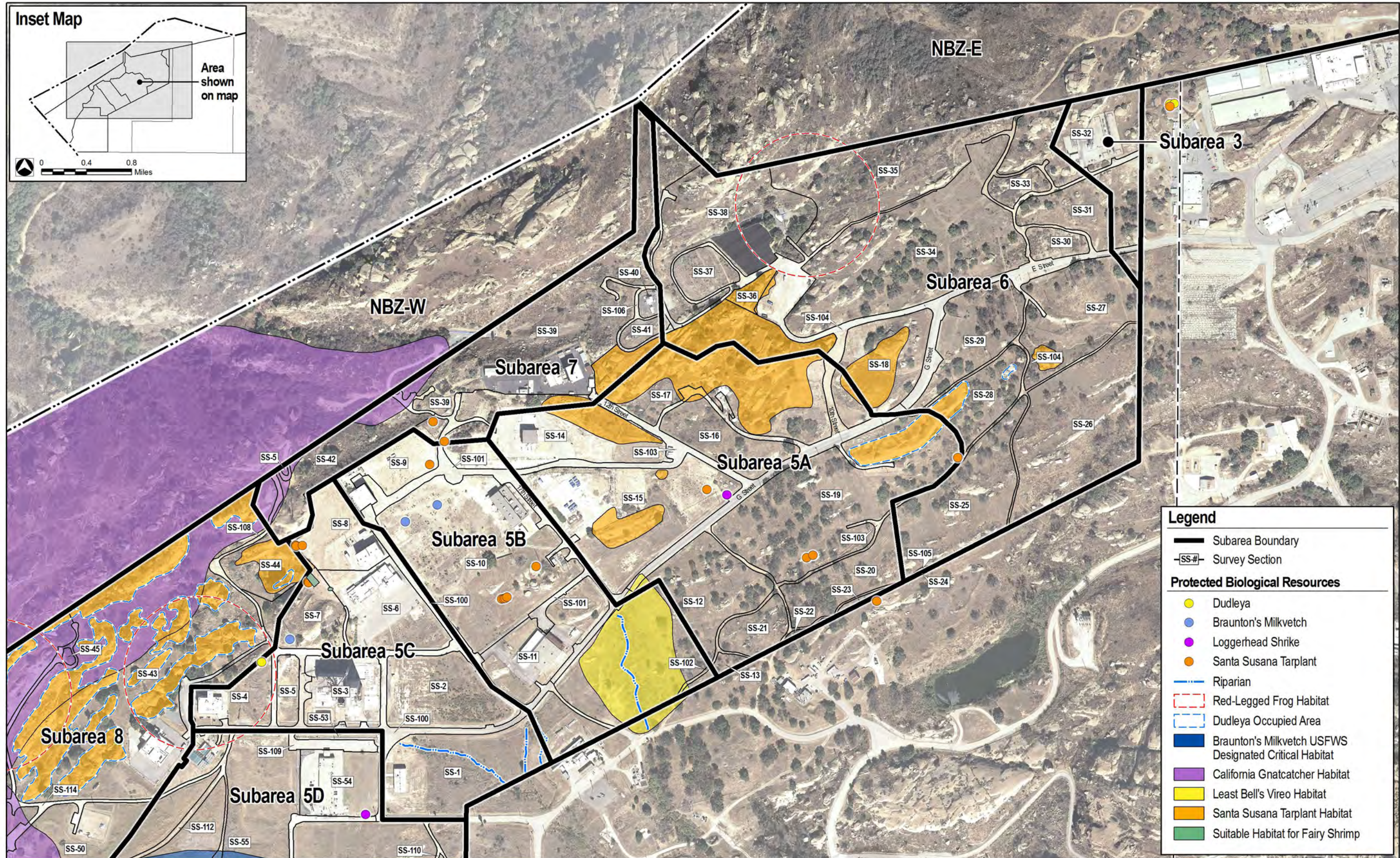
Aerial Source: CIRGIS, 2007.



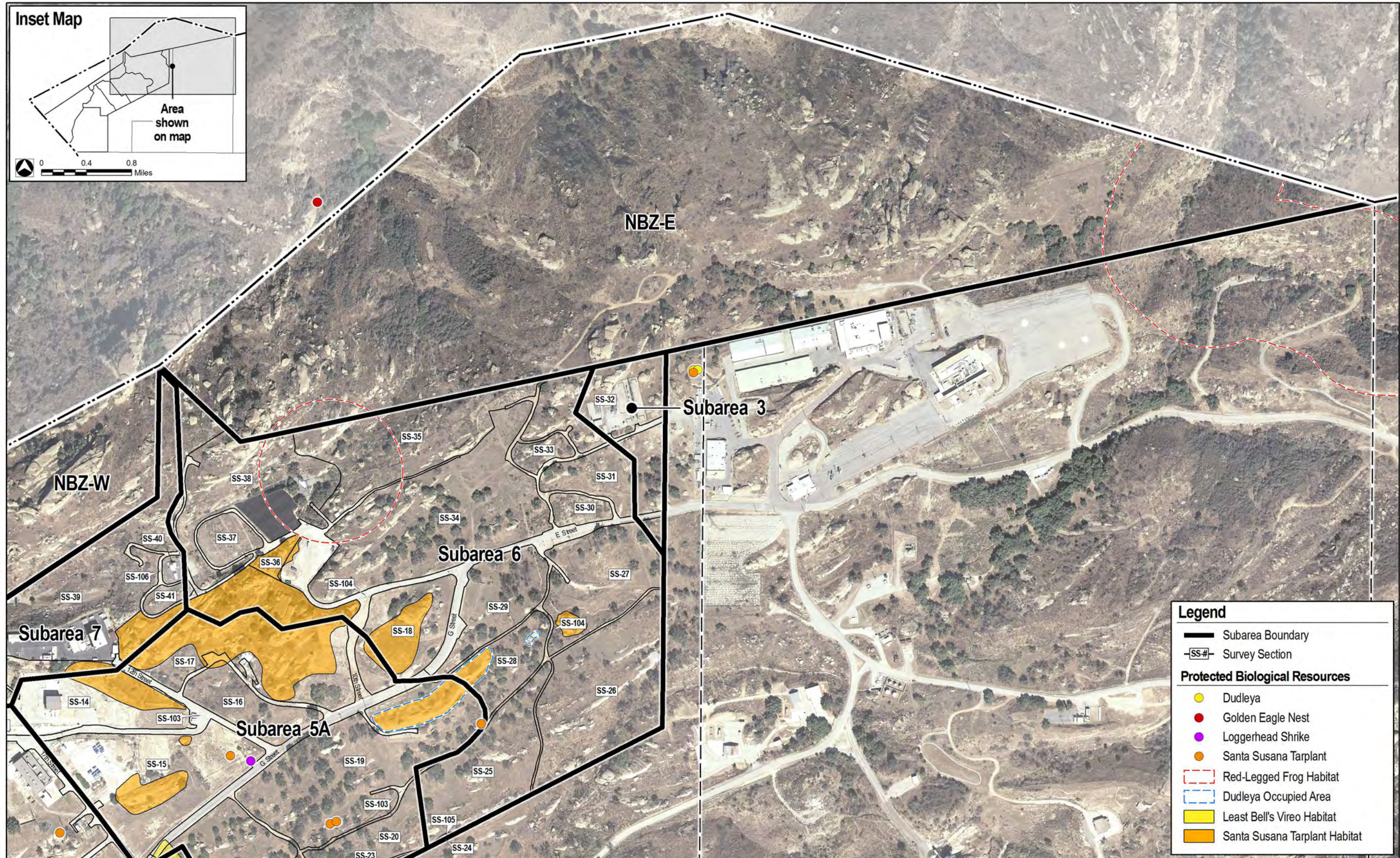
Aerial Source: CIRGIS, 2007.



Aerial Source: CIRGIS, 2007.



Aerial Source: CIRGIS, 2007.



Aerial Source: CIRGIS, 2007.

Photo Plates



Plate 1A – Vegetation cutting in progress in SS-58 (Subarea 5D), with marked Braunton's milkvetch and Malibu baccharis.



Plate 1B – Skid steer with mower attachment cutting vegetation in SS-49 (Subarea 8).



Plate 1C – Vegetation cutting crew with chipper in SS-43 (Subarea 8).



Plate 1D – Front-loading tractor used for the removal of poison oak branches.



Plate 2A – ERGS vehicle conducting gamma scanning in SS-56 (Subarea 5D).



Plate 2B – Gamma scanning with mule-mounted scanner in SS-12 (Subarea 5B).



Plate 2C – Geophysical surveys in SS-12 (Subarea 5B).



Plate 2D – Soil sampling crew with truck-mounted auger in SS-10 (Subarea 5B).



Plate 3A – Sediment sampling (SWSS) crew working in NBZ.



Plate 3B – SS-52 (Subarea 8) during vegetation cutting activities, with Braunton's milkvetch plants in foreground.



Plate 3C – Braunton's milkvetch marked with flagging tape after vegetation cutting in SS-58 (Subarea 5D).



Plate 3D – The larger of two vernal pools containing unidentified fairy shrimp in SS-12 (Subarea 5C).



Plate 4A – View of the second pool in SS-7 (Subarea 5C containing unidentified fairy shrimp, nearly dry after heavy rainfall received in December 2010).



Plate 4B – Malibu baccharis marked with flagging tape after vegetation cutting in SS-58 (Subarea 5D), with chaparral yucca.



Plate 4C – Juvenile coast horned lizard found at SS-58 (Subarea 5D).



Plate 4D – Adult coast horned lizard found at SS-58 (Subarea 5D).

**ATTACHMENT 1
BIOLOGICAL CLEARANCE SURVEY FORMS**

Date: 10/8/10
10/11/10

NOT VOID

Sheet 1 of 1

BIOLOGICAL RESOURCE CLEARANCE SURVEY FORM

Work Area: 6-34 (Soil Moisture Test Area)

SURVEYS PERFORMED

ID	Survey Type	Biologist	Expiration
1	Special-status species suitable habitat	J. Anderson	Feb 15, 2011

SURVEY FINDINGS

ID	Protected Resources	Flagged (Y/N)	Applicable Avoidance and Minimization Measures
1	Coast live oaks	N	Avoid or trim lower branches only Vallejo County oak tree ordinance trimming guidelines. Also see Vegetation Management protocols in ITC L. sup.

NOTES AND RECOMMENDATIONS:

- ~~Area~~ Area cleaned ^{over} ~~over~~ two days.
- Surveyed area is a portion of 6-34, Area to be used for soil moisture testing and calibration of soil moisture test equipment.
- Monitor required for vegetation clearance. ~~Area~~ Potential occurrence of COFC species of Special Concern coast horned lizard and coast patch nosed snake, particularly in chaparral areas ~~and~~ on site.
- Avoid coast live oak over 3" dbh (diameter at breast height) or trim lower branches.
- Requested cutting of vegetation to base. This is acceptable in this area, if necessary.
- Dead oak trees may be cut.

Biologist Signature: J. Anderson

Date: 10/11/10

HGL Field Supervisor Signature: Reah Sperry

Date: 10/11/10

BIOLOGICAL RESOURCE CLEARANCE SURVEY FORM

Work Area: 8-43

SURVEYS PERFORMED

ID	Survey Type	Biologist	Expiration
1	Special-status species, suitable habitat	J. Anderson	March 1, 2011

SURVEY FINDINGS

ID	Protected Resources	Flagged (Y/N)	Applicable Avoidance and Minimization Measures
1	Special-status species Santa Susana fanplant	Y	VE-10; GS-5
1	Dudleya sp.	Y	VE-9; GS-1
1	Protected trees (coast live oak, bay, elderberry)	N	SMIP Veg Management Protocols pertaining to trees; Ventura Co tree trimming guidelines
1	Coastal Calif gnatcatcher habitat	N	GEN-8/implemented earlier in year - verified absence of species - also outside nesting season
1	Red-legged frog habitat	Y	VE-5; GS-4; GEN-11

* Not all individuals flagged.

NOTES AND RECOMMENDATIONS:

lots of poison oak in section.

- Coastal Calif gnatcatcher - outside nesting season as of biological survey in 2010 verified absence - no potential for impacts.
- Most Santa Susana fanplants & Dudleya not flagged. No measure in sections. Big monitor will flag individuals that ~~will~~ be impacted in advance of tree clearing crew.
- Potential for occurrence of Calif species of Special Concern: coast live oak, bay, coast patch wood shale, desert woodrat.
- Section contains areas identified as p.h. frog habitat for red-legged frog. External ~~from~~ damage to maximum vegetation. ~~no~~ no incident channel, bed, banks.
- all vegetation cutting
- gamma scanning within 20ft buffer of occupied areas or individual frog habitat (see GS-4). Monitor not required for gamma scans by hand.
- Other activities (geophysical/soils, etc) if used require includes off-road or if occupied areas cannot be avoided, # of protected resources

Biologist Signature: [Signature]
 HGL Field Supervisor Signature: JR Moldauer

Date: 10/18/10
 Date: 10/19/10
 cannot be avoided or must be monitored before continuing.

BIOLOGICAL RESOURCE CLEARANCE SURVEY FORM

Work Area: 8-44

SURVEYS PERFORMED

ID	Survey Type	Biologist	Expiration
1	Suitable habitat and special status species	J. Anderson	Mar 1, 2011

SURVEY FINDINGS

ID	Protected Resources	Flagged (Y/N)	Applicable Avoidance and Minimization Measures
1	Santa Susana tarplant	Y	VC-10, GS-5
1	Dudleya sp	Y	VC-9
1	Coast Olive bark & blue elderberry	N	DMV Vegetation Management Protocols pertaining to protected trees and Ventura Co. tree trimming guidelines. blue etc.

* Not all individuals flagged. Survey extent to inner fence at edge of hole where safe to do so.
NOTES AND RECOMMENDATIONS:
 • "Million dollar" hole in section.
 • Blue elderberry protected at request of Native American inventors.

• Santa Susana tarplant mainly associated w/ rock outcrops but a few occur in flat formerly spaded areas along southern boundary of section.
 • Potential for occurrence of Calif State Species of Special Concern Coast horned lizard, coast rattlesnake, and desert woodrat

BIO MONITORING REQUIREMENTS:
 • Vegetation clearance
 • Gamma scanning if within 25 ft buffer of occupied areas and individual protected species, ~~hard scanning~~ hard scanning excepted.
 • 25 ft buffer of
 • Other activities (soil, physical, etc) if would involve use of vehicles off-road ~~if occupied areas~~ cannot be avoided and impacts may occur.

Biologist Signature: J. Anderson Date: 10/18/10
 HGL Field Supervisor Signature: J. Anderson Date: 10/19/10
 cannot be avoided consist w/ bio monitor before continuing.

BIOLOGICAL RESOURCE CLEARANCE SURVEY FORM

Work Area: SS-46 (Subarea 8)

SURVEYS PERFORMED

ID	Survey Type	Biologist	Expiration
1	Protected biological resources	Scott Warner	2/15/11

SURVEY FINDINGS

ID	Protected Resources	Flagged (Y/N)	Applicable Avoidance and Minimization Measures
(1)	Ca. Red-legged frog habitat and riparian habitat	Y	GEN-11 - All activities within 300ft supervised by biologist VC-5 - Handcutting only within 300ft buffer, riparian veg should be lightly trimmed.
(2)	Santa Susana tarplant	Y	VC-10: monitoring, 6S-5: monitoring, etc.
(3)	Protected trees (oaks, elderberry)	N	All trees greater than 3" dbh must not be cut
(4)	Dudleya sp.	Y	VC-9: hand cut
(5)	Noxious weeds present	N	GEN-3: clean VC equipment after cutting
(6)	Habitat for state-protected species	N	Monitor required for VC

NOTES AND RECOMMENDATIONS:

- (1) CRLF habitat and 300-foot buffer: No mowing (hand tools only) for VC within 300-foot buffer of land catchment basin on NE side of SS-46. Warts present but only Pacific chorus frogs (*Pseudacris regilla*) detected.
 - (2) Approx 90 Santa Susana tarplants on SS-46. Most have been tagged - many are inaccessible on sandstone outcrops.
 - (3) Follow Ventura County trimming guidelines for oaks and elderberry trimming.
 - (4) Most Dudleya are located in inaccessible rocky outcrop locations and many have been flagged when impacts are possible. Est. # = 60.
 - (5) Most noxious weeds are located along S and E boundary of plots where road disturbances are present. Recommend that these areas are trimmed with SS-46 ~~equipment~~ which also has weedy species.
 - (6) Suitable habitat present for coast horned lizard *Sa-Diego desert woodrat*, *California gopher lizard*, *coast redwood* and *snail*.
- Monitor required for all activities, although monitor may not be required at all times, will be up to discretion of the monitor.

Biologist Signature: [Signature]

Date: 1/4/11

HGL Field Supervisor Signature: [Signature]

Date: 1/4/11

BIOLOGICAL RESOURCE CLEARANCE SURVEY FORM

Work Area: SS-47 (Subarea 8)

SURVEYS PERFORMED

ID	Survey Type	Biologist	Expiration
1	Protected Biological resources	Scott Warner	2/15/11

SURVEY FINDINGS

ID	Protected Resources	Flagged (Y/N)	Applicable Avoidance and Minimization Measures
(1)	California Red legged frog buffer zone	Y	GEN-11 - Activities within 300 ft of CRLF habitat or riparian habitat shall be suppressed by a biologist. (incl. GS-4, GP-2) VC-5 - Hand cutting only within 300 ft buffer VC
(2)	Noxious weeds present		GEN-3 equipment used in infested areas (inter SS) shall be cleaned before using same equipment in natural areas.

NOTES AND RECOMMENDATIONS:

① Due to CRLF habitat and 300-ft buffer, Mower is not permitted within staked boundaries. Biological monitor required for guidance for all project activities within this area. (Buffer surrounds lined catchment basin in N/E side of SS-46.)

② Noxious weeds (Centaurea melitensis (torololo), Italian thistle (Carduus pycnocephalus) and milk thistle (Silybum marianum) require implementation of GEN-3; Equipment should be cleaned before moving into natural areas to prevent the spread of these weeds. (Applies to VC equipment only.)

SS-47 is a small stand of coyote brush scrub, with an understory of grasses, weedy species mentioned above, and a low coverage of black sage, California sagebrush and Adonis encelia.

* Young oaks have clearly been planted and should not be cut.

Biologist Signature: Scott Warner

Date: 1/4/11

HGL Field Supervisor Signature: Leah Spence

Date: 1/4/11

BIOLOGICAL RESOURCE CLEARANCE SURVEY FORM

Work Area: 8-48

SURVEYS PERFORMED

ID	Survey Type	Biologist	Expiration
1	Special status species and suitable habitat	J. Anderson	MAY 1, 2011

SURVEY FINDINGS

ID	Protected Resources	Flagged (Y/N)	Applicable Avoidance and Minimization Measures
1	Santa Susana taylors	Y*	VC-10; GS-5
1	Dudleya sp.	Y*	VC-9; GS-1
1	Protected trees (coast live oak, walnut, elderberry)	N	SMP Veg Management Protocols pertaining to trees - Ventura Co. tree trimming guidelines
1	Coastal Calif. gnatcatcher habitat	N	GENS (protocol surveys have verified species absence - currently outside nesting season)
	A. baccharis	Y	Avoid this species; GS-1

* Not all individuals flagged.

* Recommend protect very large manzanita & toyon b/c exemplary specimens

NOTES AND RECOMMENDATIONS:

• Santa Susana taylors and Dudleya sp. along ~~south~~ northwest boundary and on ground skidstone outcrops.

• Potential for occurrence of State Species of Special Concern coast horned lizard, coast patch nosed snake, desert insular.

• Small ephemeral drainages in section not jurisdictional (don't support riparian veg or aquatic wildlife)

~~A. baccharis not observed but expected to occur in chaparral~~

BIOLOGICAL MONITORING REQUIREMENTS:

- All vegetation cutting
- Gamma scanning within 25-ft buffer of protected resources (hand scanning excepted)
- Other activities (Soil, geo-physical, etc) monitor required if vehicles used off-road or if protected resources cannot be avoided.

Biologist Signature: J. Anderson

Date: 10/19/10

HGL Field Supervisor Signature: J. Hoffman

Date: 10/19/10

BIOLOGICAL RESOURCE CLEARANCE SURVEY FORM

Work Area: 8-49

SURVEYS PERFORMED

ID	Survey Type	Biologist	Expiration
1	Special-status species and suitable habitat	J. Anderson	MAR 1, 2011

SURVEY FINDINGS

ID	Protected Resources	Flagged (Y/N)	Applicable Avoidance and Minimization Measures
1	Malibu baccharis	N	Avoid species; GS-1
1	Calochortus sp.	N	Avoid species; GS-1
1	Protected trees (coast live oaks, walnuts, elderberries)	N	Site Vegetation Management Protocols pertaining to trees; Ventura Co. tree trimming guidelines
1	Coastal California gnatcatcher habitat	N	GEN-8 (implemented earlier this year) Protocol survives verified absence of species and also outside nesting season (currently)

NOTES AND RECOMMENDATIONS:

Recommend do not cut very large manzanita and to you to ~~exemplary specimens~~ ~~of~~ ~~the~~ ~~site~~

Malibu baccharis apparently common and likely distributed throughout chamise-black sage (chaparral). Some individuals were flagged along margins of chaparral but density of chaparral makes flagging M. baccharis impractical. Bi. monitor well work with vegetation cutting crew to ensure species is not cut and flag signs as chaparral shrubs are removed.

Last years seed pods of Calochortus (MARIPOSA LILY) (unidentified to species) observed in chaparral. Clipping of senesced (dead) seed pods OK. However, if activities are conducted during growing season for Calochortus (APR-JUN) new plants must ~~be~~ avoided. Calochortus unidentified to species but high probability based on seed pod shape and habitat is a special status rank ~~plant~~ plant.

Removal of habitat for occurrence of species. Special concern coast ramped lizard, coast patch nosed snake.

Some person oak in oak woodland area.

Bio monitoring & R&B requirements in SECTION 1. All vegetation cutting and gamma scanning (hand scanning excepted) within 25 ft buffer of protected resources, other activities (not geophysical etc) monitor required if use of vehicles all road or if protected resources cannot be avoided.

Biologist Signature: J. Anderson

Date: 10/19/10

HGL Field Supervisor Signature: J.R. Anderson

Date: 10/19/10

BIOLOGICAL RESOURCE CLEARANCE SURVEY FORM

Work Area: Subarea 8 - SS50

SURVEYS PERFORMED

ID	Survey Type	Biologist	Expiration
1	Special status species and suitable habitat	Scott Weiner	3/1/2011

SURVEY FINDINGS

ID	Protected Resources	Flagged (Y/N)	Applicable Avoidance and Minimization Measures
1	Protected trees (coast live oak, walnuts, elderberries)	N	SMP Vegetation Management Protocols pertaining to trees, Ventura Co. Tree Trimming Guidelines

NOTES AND RECOMMENDATIONS:

Area consists of disturbed annual grassland around old building foundations with patches of native trees (coast live oak, blue elderberry, S. California black walnut) and shrubs (California encelia, coyote brush, black sage, California sagebrush).

Italian thistle (*Carduus pycnocephalus*) and tocalote (*Centaurea melitensis*) present on SS-50. (both invasive weeds)

→ Implement GEN-3: vegetation tools should be cleaned before entering natural habitat areas after working in SS-50.

Biologist Signature: Scott Weiner

Date: 12/15/10

HGL Field Supervisor Signature: Judith Rubin Feldman

Date: 12/15/10

BIOLOGICAL RESOURCE CLEARANCE SURVEY FORM

Work Area: 8-52

SURVEYS PERFORMED

ID	Survey Type	Biologist	Expiration
1	Special-status species and suitable habitat	J. Anderson	MAR 1, 2011

SURVEY FINDINGS

ID	Protected Resources	Flagged (Y/N)	Applicable Avoidance and Minimization Measures
1	Braunton's milkvetch	Y*	VC-3: GS-1
1	Malibu baccharis	Y*	Avoid impacts to species.
1	Protected trees (coast live oak, walnut, elderberry)	N	HGL-smp Veg Management Protocols pertaining to trees; Ventura Co. tree trimming guidelines
1	coastal Calif. gnatcatcher habitat	N	GEN-8 (implemented earlier this year - verified absence of species) ALSO outside nesting season currently

* Not all individuals flagged. so no potential impact.
NOTES AND RECOMMENDATIONS:

- 100s of Braunton's milkvetch and M. Baccharis in section. Many flagged but probably most not flagged. BioMonitor will "flag" in advance of veg cutting crew.
- Potential occurrence of Calif. State Species of Concern - coast horned lizard and coast patch nosed snake.

BIO MONITORING REQUIREMENTS IN SECTION:

- All vegetation cutting activities
- Gamma scanning activities w/ exception of hand scanning.
- Geophysical surveys / soil sampling if were to involve use of vehicles' bio-road or if ^{protected resources} ~~occurred~~ ^{cannot be avoided}. If occurred ^{and cannot be avoided} impacts may result, consult w/ bio monitor before continuing activities.

Biologist Signature: [Signature]

Date: 10/18/10

HGL Field Supervisor Signature: [Signature]

Date: 10/19/10

Date: 10/18/10

Sheet 1 of 1

BIOLOGICAL RESOURCE CLEARANCE SURVEY FORM

Work Area: 8-10P

SURVEYS PERFORMED

ID	Survey Type	Biologist	Expiration
<u>1</u>	<u>Special-status species and suitable habitat</u>	<u>J. Anderson</u>	<u>Duration of project</u>

SURVEY FINDINGS

ID	Protected Resources	Flagged (Y/N)	Applicable Avoidance and Minimization Measures
	<u>NONE FOUND</u>		

NOTES AND RECOMMENDATIONS:

Graded, unpaired roadbed.
No protected resources found. However, Santa Susana farplants did occur directly adjacent to roadbed in neighboring sections.
No bio monitor required. ~~Home~~

Biologist Signature: [Signature]

Date: 10/18/10

HGL Field Supervisor Signature: [Signature]

Date: 10/19/10

**ATTACHMENT 2
BIOLOGICAL MONITORING FORMS**

Date: 10/7/10

Sheet 1 of 1

BIOLOGICAL RESOURCE MONITORING FORM

ACTIVITIES MONITORED

ID	Time	Area	Activities Monitored*	Equipment
1	745-1000	5B-12	<input checked="" type="checkbox"/> VC <input type="checkbox"/> GS <input type="checkbox"/> GP <input type="checkbox"/> SS <input type="checkbox"/> MWS <input type="checkbox"/> SWSS	Chain saws, weed whippers
2	1020-1230	5D-58	<input checked="" type="checkbox"/> VC <input type="checkbox"/> GS <input type="checkbox"/> GP <input type="checkbox"/> SS <input type="checkbox"/> MWS <input type="checkbox"/> SWSS	"
			<input type="checkbox"/> VC <input type="checkbox"/> GS <input type="checkbox"/> GP <input type="checkbox"/> SS <input type="checkbox"/> MWS <input type="checkbox"/> SWSS	
			<input type="checkbox"/> VC <input type="checkbox"/> GS <input type="checkbox"/> GP <input type="checkbox"/> SS <input type="checkbox"/> MWS <input type="checkbox"/> SWSS	
			<input type="checkbox"/> VC <input type="checkbox"/> GS <input type="checkbox"/> GP <input type="checkbox"/> SS <input type="checkbox"/> MWS <input type="checkbox"/> SWSS	

Handwritten note: "Chain saws, weed whippers, trimmer"

* VC = Vegetation Clearing, GS = Gamma Scanning, GP = Geophysical Survey, SS = Soil Sampling, MWS = Monitor Well Sampling, SWSS = Surface Water and Sediment Sampling

MONITORING RESULTS

ID	Protected Resources Encountered	Area	AMM's Implemented	Residual Impacts
1	Riparian veg / ephemeral channels	12	Riparian 100-smp Protection Measures	Trimming of riparian vegetation only, no cutting
1/2	Coast live oaks	12/58	Vegetation management protocols, Ventura Co. ordinance	Lower, lateral branches cut only.
1	Blue elderberry	12	" "	Lower, lateral branches cut only.
2	Coastal California Gnatcatcher Suitable	58	Protocol surveys & cutting outside nesting season	No impacts
2	Braunton's milkvetch critical habitat area	58	@ VC-3	Spencer avoided. No impacts
2	Calif Black Walnut	58	Vegetation management protocols, Ventura Co. tree ordinance, trimming guidelines.	Lower, lateral branches cut only

Handwritten note: "5 to 15"

NOTES AND RECOMMENDATIONS:

5D-58 within coastal California gnatcatcher suitable habitat. Veg cutting outside nesting season and protocol surveys by qualified biologist earlier in year verified gnatcatcher abundance. No potential impact.

5D-58 within Braunton's milkvetch critical habitat area. Monitor surveyed for milkvetch in advance of crew. ~~the~~ individuals' plants encountered and avoided.

Protected trees trimmed per Ventura County tree ordinance guidelines.

There are very few Braunton's milkvetch on lower - mid slopes in 5D-58, will run into higher trees on upper slopes in 2 western 1/2 of section.

Biologist Signature: [Signature] Date: 10/7/10
 HGL Field Supervisor Signature: [Signature] Date: 10/7/10

Date: 10/8/10

Sheet 1 of 1

BIOLOGICAL RESOURCE MONITORING FORM

ACTIVITIES MONITORED

ID	Time	Area	Activities Monitored*	Equipment
1	8:15-9:30	33	<input checked="" type="checkbox"/> VC <input type="checkbox"/> GS <input type="checkbox"/> GP <input type="checkbox"/> SS <input type="checkbox"/> MWS <input type="checkbox"/> SWSS	Chain saws, wood chippers
2	9:30-2:30	5D-5E	<input checked="" type="checkbox"/> VC <input type="checkbox"/> GS <input type="checkbox"/> GP <input type="checkbox"/> SS <input type="checkbox"/> MWS <input type="checkbox"/> SWSS	" Dig hand tools, chippers
			<input type="checkbox"/> VC <input type="checkbox"/> GS <input type="checkbox"/> GP <input type="checkbox"/> SS <input type="checkbox"/> MWS <input type="checkbox"/> SWSS	
			<input type="checkbox"/> VC <input type="checkbox"/> GS <input type="checkbox"/> GP <input type="checkbox"/> SS <input type="checkbox"/> MWS <input type="checkbox"/> SWSS	
			<input type="checkbox"/> VC <input type="checkbox"/> GS <input type="checkbox"/> GP <input type="checkbox"/> SS <input type="checkbox"/> MWS <input type="checkbox"/> SWSS	

* VC = Vegetation Clearing, GS = Gamma Scanning, GP = Geophysical Survey, SS = Soil Sampling, MWS = Monitor Well Sampling, SWSS = Surface Water and Sediment Sampling

MONITORING RESULTS

ID	Protected Resources Encountered	Area	AMM's Implemented	Residual Impacts
1	Coast live oak	33	Avoided	No impacts
2	Braunton's critical millwetland habitat	58	VC-3	No impacts
2	coastal Calif gnatcatcher	58	Proctor surveys outside nesting	No impacts
2	Protected trees (live oak, madrone, elderberry)	58	Veg management protocols & VC-3 tree clearance trimming guidelines	Understory branches cut only.

NOTES AND RECOMMENDATIONS:

Several Braunton's millwetlands encountered; no impacts.

Proctor surveys verified absence of coastal Calif gnatcatcher; also Veg cutting outside of nesting season; no potential impacts

Chain saw used on lower shores to remove cuttings - permission granted due to only 2' millwetland cover ledge area. Restricted size millwetland under 10' buffer. Also gradual slopes less potential for mower to tear up veg and cause erosion.

Biologist Signature: _____

[Signature]

Date: 10/8/10

HGL Field Supervisor Signature: _____

[Signature]

Date: 10-8-10

Date: 10/11/10

Sheet 1 of 1

BIOLOGICAL RESOURCE MONITORING FORM

ACTIVITIES MONITORED

ID	Time	Area	Activities Monitored*	Equipment
1	730-930	6-34	<input checked="" type="checkbox"/> VC <input type="checkbox"/> GS <input type="checkbox"/> GP <input type="checkbox"/> SS <input type="checkbox"/> MWS <input type="checkbox"/> SWSS	Chain saws, weed whippers
			<input type="checkbox"/> VC <input type="checkbox"/> GS <input type="checkbox"/> GP <input type="checkbox"/> SS <input type="checkbox"/> MWS <input type="checkbox"/> SWSS	lopers, other hand tools
			<input type="checkbox"/> VC <input type="checkbox"/> GS <input type="checkbox"/> GP <input type="checkbox"/> SS <input type="checkbox"/> MWS <input type="checkbox"/> SWSS	table w/ mower attachment
2	930-230	5D-58	<input checked="" type="checkbox"/> VC <input type="checkbox"/> GS <input type="checkbox"/> GP <input type="checkbox"/> SS <input type="checkbox"/> MWS <input type="checkbox"/> SWSS	44 but jack w/
			<input type="checkbox"/> VC <input type="checkbox"/> GS <input type="checkbox"/> GP <input type="checkbox"/> SS <input type="checkbox"/> MWS <input type="checkbox"/> SWSS	mower used for chipping only

* VC = Vegetation Clearing, GS = Gamma Scanning, GP = Geophysical Survey, SS = Soil Sampling, MWS = Monitor Well Sampling, SWSS = Surface Water and Sediment Sampling

MONITORING RESULTS

ID	Protected Resources Encountered	Area	AMM's Implemented	Residual Impacts
1	Coast live oaks	6-34	Avoided	No impacts
2	coastal Calif. gnatcatcher suitable	5D-58	GEN-8	No impacts
2	Braunert's nighthawk milkweed critical habitat	5D-58	VC-3	No impacts
2	protected trees: Oaks, Walnut	5D-58	veg management protocols Ventura Co Tree advance trimming guidelines	lower, lateral branches trimmed only.
2	Molibo baccharis	5D-58	Avoided	No impacts

NOTES AND RECOMMENDATIONS:

• 5D-58 within coastal Calif gnatcatcher ^{suitable} habitat. No potential impacts as protocols surveys have been conducted earlier in year to verify absence of species, also outside gnatcatcher nesting season.

• several Braunert's milkweed encountered in 5D-58 as well as a few Molibo baccharis. Avoided - No injury or take.

Biologist Signature: [Signature]
 HGL Field Supervisor Signature: [Signature]

Date: 10/11/10
 Date: 10/11/10

BIOLOGICAL RESOURCE MONITORING FORM

ACTIVITIES MONITORED

31224

ID	Time	Area	Activities Monitored*	Equipment
1	300-360	SD-58	<input checked="" type="checkbox"/> VC <input type="checkbox"/> GS <input type="checkbox"/> GP <input type="checkbox"/> SS <input type="checkbox"/> MWS <input type="checkbox"/> SWSS	Chain saws, weed whippers,
			<input type="checkbox"/> VC <input type="checkbox"/> GS <input type="checkbox"/> GP <input type="checkbox"/> SS <input type="checkbox"/> MWS <input type="checkbox"/> SWSS	tank w/mower, backhoe used for chipping
			<input type="checkbox"/> VC <input type="checkbox"/> GS <input type="checkbox"/> GP <input type="checkbox"/> SS <input type="checkbox"/> MWS <input type="checkbox"/> SWSS	
			<input type="checkbox"/> VC <input type="checkbox"/> GS <input type="checkbox"/> GP <input type="checkbox"/> SS <input type="checkbox"/> MWS <input type="checkbox"/> SWSS	
			<input type="checkbox"/> VC <input type="checkbox"/> GS <input type="checkbox"/> GP <input type="checkbox"/> SS <input type="checkbox"/> MWS <input type="checkbox"/> SWSS	

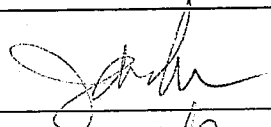
* VC = Vegetation Clearing, GS = Gamma Scanning, GP = Geophysical Survey, SS = Soil Sampling, MWS = Monitor Well Sampling, SWSS = Surface Water and Sediment Sampling

MONITORING RESULTS

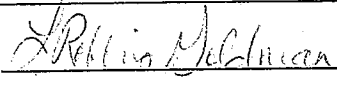
ID	Protected Resources Encountered	Area	AMM's Implemented	Residual Impacts
1	Braunton's outcrop milkvetch habitat	SD-58	VC-3	1 Braunton's milkvetch cut to base
1	coastal Calif. Gnatcatcher Suitable Habitat	SD-58	GEN-8	No impact
1	Protected trees oak, walnuts, elderberry	SD-58	Vegetation management pruning Ventura Co. trimming guidelines	Lower, lateral branches cut only
1	Malibu Macchais SNPS IB.1 plant	SD-58	Avoided	NO impacts

NOTES AND RECOMMENDATIONS:

- o Coastal Calif. gnatcatcher absence verified by protected surveys, veg cutting outside of gnatcatcher nesting season so no potential impact.
- o Several Braunton's milkvetch encountered. Crew did excellent job of avoiding and identifying plants that were not flagged. One Braunton's milkvetch accidentally cut to base.
- o Firestorm prepared per Request of Native American monitor.
- o one area permitted use of mower due to absence of protected plants. backhoe/mower used for chipping in section - chipping monitored if chipping within vicinity of protected plants.

Biologist Signature: 

Date: 10/12/10

HGL Field Supervisor Signature: 

Date: 10/12/10

Date: 10/13/10

Sheet 1 of 1

BIOLOGICAL RESOURCE MONITORING FORM

ACTIVITIES MONITORED

ID	Time	Area	Activities Monitored*	Equipment
1	0800-1500	SS-58	<input checked="" type="checkbox"/> VC <input type="checkbox"/> GS <input type="checkbox"/> GP <input type="checkbox"/> SS <input type="checkbox"/> MWS <input type="checkbox"/> SWSS	mower, weed whackers, blowers, etc.
2	1045-1110	SS-12	<input type="checkbox"/> VC <input checked="" type="checkbox"/> GS <input type="checkbox"/> GP <input type="checkbox"/> SS <input type="checkbox"/> MWS <input type="checkbox"/> SWSS	mike
			<input type="checkbox"/> VC <input type="checkbox"/> GS <input type="checkbox"/> GP <input type="checkbox"/> SS <input type="checkbox"/> MWS <input type="checkbox"/> SWSS	
			<input type="checkbox"/> VC <input type="checkbox"/> GS <input type="checkbox"/> GP <input type="checkbox"/> SS <input type="checkbox"/> MWS <input type="checkbox"/> SWSS	
			<input type="checkbox"/> VC <input type="checkbox"/> GS <input type="checkbox"/> GP <input type="checkbox"/> SS <input type="checkbox"/> MWS <input type="checkbox"/> SWSS	

a hand saw, front-load ing tractor

* VC = Vegetation Clearing, GS = Gamma Scanning, GP = Geophysical Survey, SS = Soil Sampling, MWS = Monitor Well Sampling, SWSS = Surface Water and Sediment Sampling

MONITORING RESULTS

ID	Protected Resources Encountered	Area	AMM's Implemented	Residual Impacts
1	Br. milkvetch	SS-58	VC1, VC2, VC3, GEN4	All plants avoided
1	Matilba baccharis	SS-58	VC1, VC2	All plants avoided
1	Gulf. gnatcatcher habitat	SS-58	GEN8, VC2	Habitat quality reduced
2	LBN/Riparian area	SS-58	GEN9, AppN	None (non-significant hoof prints)

NOTES AND RECOMMENDATIONS:

VC crews worked S-central portion of SS-58. Some elderberry ~~and~~ saplings left intact per request of Native American monitor.
 1 = Mower not working within milkvetch area ~~per~~ per VC-3.
 - chopper must be on hard ground which is scarce on this SS. so mower is crushing some brush piles instead.

GS on SS-12 performed w/o monitor until last 15 mins before completion. Appendix N ~~was~~ requires monitor for ALL work conducted within riparian areas. Unsatisfactory adherence to this measure by HGL/EPA. Significant impacts, though.

Biologist Signature: [Signature]

Date: 10/13/10

HGL Field Supervisor Signature: [Signature]

Date: 10/13/10

Date: 10/14/10

Sheet 1 of 1

BIOLOGICAL RESOURCE MONITORING FORM

ACTIVITIES MONITORED

ID	Time	Area	Activities Monitored*	Equipment
1	0800-1200	SS-58	<input checked="" type="checkbox"/> VC <input type="checkbox"/> GS <input type="checkbox"/> GP <input type="checkbox"/> SS <input type="checkbox"/> MWS <input type="checkbox"/> SWSS	mon. brush, some wire
			<input type="checkbox"/> VC <input type="checkbox"/> GS <input type="checkbox"/> GP <input type="checkbox"/> SS <input type="checkbox"/> MWS <input type="checkbox"/> SWSS	cut brush, log
			<input type="checkbox"/> VC <input type="checkbox"/> GS <input type="checkbox"/> GP <input type="checkbox"/> SS <input type="checkbox"/> MWS <input type="checkbox"/> SWSS	
			<input type="checkbox"/> VC <input type="checkbox"/> GS <input type="checkbox"/> GP <input type="checkbox"/> SS <input type="checkbox"/> MWS <input type="checkbox"/> SWSS	
			<input type="checkbox"/> VC <input type="checkbox"/> GS <input type="checkbox"/> GP <input type="checkbox"/> SS <input type="checkbox"/> MWS <input type="checkbox"/> SWSS	

* VC = Vegetation Clearing, GS = Gamma Scanning, GP = Geophysical Survey, SS = Soil Sampling, MWS = Monitor Well Sampling, SWSS = Surface Water and Sediment Sampling

MONITORING RESULTS

ID	Protected Resources Encountered	Area	AMM's Implemented	Residual Impacts
1	Be. milk vetch	SS-58	GEN 4, VC1, VC2, VC3	All plants avoided
1	Malibu baccharis	SS-58	VC1, VC2	~5 plants logged away (likely by brush cutter)
1	Calif. gnatcatcher habitat	SS-58	GEN 8, VC2	Habitat quality reduced
1	Coast horned lizard	SS-58	n/a (relocated off-site)	Unharmed, relocated (1 adult)

NOTES AND RECOMMENDATIONS:

Line VC crew continue clearing on burned chaparral (milkvetch / Mal. baccharis habitat) of SS-58. Additional unlogged plants flagged by biologist.

Approximately 5 Malibu baccharis lost to weed whacker (not flagged) at UTM: 342038E, 3752502N.

Adult coast horned lizard found unharmed in brushed area (UTM 342075E, 3752502N). Relocated to area just beyond SE corner of SS-58 AT UTM 342070E, 3752502N.

Logged shrike observed hunting in SS-56. Cooper's hawk seen soaring in SS-55.

Biologist Signature: [Signature]

Date: 10/14/10

HGL Field Supervisor Signature: [Signature]

Date: 10/14/10

BIOLOGICAL RESOURCE MONITORING FORM

ACTIVITIES MONITORED

ID	Time	Area	Activities Monitored*	Equipment
1	0800-1500	SS-58	<input checked="" type="checkbox"/> VC <input type="checkbox"/> GS <input type="checkbox"/> GP <input type="checkbox"/> SS <input type="checkbox"/> MWS <input type="checkbox"/> SWSS	loppers, chainsaw, weed whackers
2	1500-1520	SS-12	<input type="checkbox"/> VC <input type="checkbox"/> GS <input checked="" type="checkbox"/> GP <input type="checkbox"/> SS <input type="checkbox"/> MWS <input type="checkbox"/> SWSS	sled/stor w/ fork and mower attachments
			<input type="checkbox"/> VC <input type="checkbox"/> GS <input type="checkbox"/> GP <input type="checkbox"/> SS <input type="checkbox"/> MWS <input type="checkbox"/> SWSS	
			<input type="checkbox"/> VC <input type="checkbox"/> GS <input type="checkbox"/> GP <input type="checkbox"/> SS <input type="checkbox"/> MWS <input type="checkbox"/> SWSS	pedestrians, magnetometer

* VC = Vegetation Clearing, GS = Gamma Scanning, GP = Geophysical Survey, SS = Soil Sampling, MWS = Monitor Well Sampling, SWSS = Surface Water and Sediment Sampling

MONITORING RESULTS

ID	Protected Resources Encountered	Area	AMM's Implemented	Residual Impacts
1	Br. milkvetch	SS-58	GEN4, VC1, VC2, VC3	All plants avoided
1	Malibu baccharis	SS-58	VC1, VC2	4 plants heavily trimmed, inadvertent
1	Calif. gnatcatcher habitat	SS-58	GENB, VC2	Habitat quality reduced
2	Riparian area	SS-12	* Riparian protection pg. N-1 to N-3	None

NOTES AND RECOMMENDATIONS:

LDI VC crew continuing to clear vegetation in burned chaparral (milkvetch/Malibu baccharis habitat). Additional unflagged plants flagged by biologist.

About 4 Malibu baccharis cut way back inadvertently (not flagged) adjacent to ~~SS-58~~ ~~private boundary~~ (UTM: 342022E 378855N). Large rattlesnake removed from this patch also.

1500-1520 briefly monitored Joe Parish and Cliff Knight's crews in riparian area at SS-12. No impacts. I advised them to avoid impacting vegetation and banks of streambed.

Instead of using chipper, LDI is retrieving brush from milkvetch area by hand and w/ fork attachment on tank, ~~the~~ transporting brush to road, then chipping/crushing w/ mower attachment (which is all satisfactory).

LDI = excellent job of avoiding protected plants, even unflagged ones.

Biologist Signature: [Signature]

Date: 10/15/10

HGL Field Supervisor Signature: [Signature]

Date: 10/18/10

Date: 10/18/10

Sheet 1 of 1

BIOLOGICAL RESOURCE MONITORING FORM

ACTIVITIES MONITORED

ID	Time	Area	Activities Monitored*	Equipment
1	0800-1300	SS-58	<input checked="" type="checkbox"/> VC <input type="checkbox"/> GS <input type="checkbox"/> GP <input type="checkbox"/> SS <input type="checkbox"/> MWS <input type="checkbox"/> SWSS	loggers chainsaw, weed whiders
			<input type="checkbox"/> VC <input type="checkbox"/> GS <input type="checkbox"/> GP <input type="checkbox"/> SS <input type="checkbox"/> MWS <input type="checkbox"/> SWSS	skidster w/ fork and mower attachment
			<input type="checkbox"/> VC <input type="checkbox"/> GS <input type="checkbox"/> GP <input type="checkbox"/> SS <input type="checkbox"/> MWS <input type="checkbox"/> SWSS	
			<input type="checkbox"/> VC <input type="checkbox"/> GS <input type="checkbox"/> GP <input type="checkbox"/> SS <input type="checkbox"/> MWS <input type="checkbox"/> SWSS	
			<input type="checkbox"/> VC <input type="checkbox"/> GS <input type="checkbox"/> GP <input type="checkbox"/> SS <input type="checkbox"/> MWS <input type="checkbox"/> SWSS	

* VC = Vegetation Clearing, GS = Gamma Scanning, GP = Geophysical Survey, SS = Soil Sampling, MWS = Monitor Well Sampling, SWSS = Surface Water and Sediment Sampling

MONITORING RESULTS

ID	Protected Resources Encountered	Area	AMM's Implemented	Residual Impacts
1	Br. milkvetch	SS-58	GEN4, VC1, VC2, VC3	1 plant damaged
1	Malibu baccharis	SS-58	VC1, VC2	4 plants inadvertently trimmed
1	Calif. gnatcatcher habitat	SS-58	GEN8, VC2	Habitat quality reduced.

NOTES AND RECOMMENDATIONS:

LDI VC crew continuing veg clearing on top of hill in milkvetch / baccharis area.
 LDI doing excellent job of avoiding milkvetch and baccharis, even untagged individuals.
 LDI continuing to crush brush after removing it from sensitive area (which is okay).
 ↑ w/ mower

One damaged but live milkvetch plant (knocked over) at UTM 342005E, 3788581N.
 I placed a stake near stem to avoid further damage (should survive based on others seen in similar condition).

4 Malibu baccharis inadvertently trimmed at UTM 341957E, 3788594N (not tagged).

Biologist Signature: [Signature]

Date: 10/18/10

HGL Field Supervisor Signature: [Signature]

Date: 10/18/10

Date: 10/19/10

Sheet 1 of 1

BIOLOGICAL RESOURCE MONITORING FORM

ACTIVITIES MONITORED

ID	Time	Area	Activities Monitored*	Equipment
1	0800-1430	SS-43	<input checked="" type="checkbox"/> VC <input type="checkbox"/> GS <input type="checkbox"/> GP <input type="checkbox"/> SS <input type="checkbox"/> MWS <input type="checkbox"/> SWSS	log skids, chainsaw, weed whacker,
			<input type="checkbox"/> VC <input type="checkbox"/> GS <input type="checkbox"/> GP <input type="checkbox"/> SS <input type="checkbox"/> MWS <input type="checkbox"/> SWSS	chipper, front loading tractor
			<input type="checkbox"/> VC <input type="checkbox"/> GS <input type="checkbox"/> GP <input type="checkbox"/> SS <input type="checkbox"/> MWS <input type="checkbox"/> SWSS	
			<input type="checkbox"/> VC <input type="checkbox"/> GS <input type="checkbox"/> GP <input type="checkbox"/> SS <input type="checkbox"/> MWS <input type="checkbox"/> SWSS	
			<input type="checkbox"/> VC <input type="checkbox"/> GS <input type="checkbox"/> GP <input type="checkbox"/> SS <input type="checkbox"/> MWS <input type="checkbox"/> SWSS	

* VC = Vegetation Clearing, GS = Gamma Scanning, GP = Geophysical Survey, SS = Soil Sampling, MWS = Monitor Well Sampling, SWSS = Surface Water and Sediment Sampling

MONITORING RESULTS

ID	Protected Resources Encountered	Area	AMM's Implemented	Residual Impacts
1	Santa Susana toadplant	SS-43	VC1, VC2, VC10	None.
1	Dudleya sp.	SS-43	VC1, VC2, VC-9	None.
1	California red-legged frog habitat	SS-43	VC5, VC6 , GEN11	Cover reduced.
1	Oaks	SS-43	Ventura Co. Trimming Guidelines	Trimmed per guidelines.

NOTES AND RECOMMENDATIONS:

LDI VC crew cutting NE end of SS-43 today.

2 southern alligator lizards, western toad (all quite large) relocated off site.

4 rattlesnakes removed from site.

J. Anderson (Envicom) established stakes delineating California Red-legged frog 300-ft buffer, within which vehicles are not permitted. LDI doing good job adhering to this.

Biologist Signature: [Signature]

HGL Field Supervisor Signature: [Signature]

Date: 10/19/10

Date: 10/20/10

Date: 10/20/10

Sheet 1 of 1

BIOLOGICAL RESOURCE MONITORING FORM

ACTIVITIES MONITORED

ID	Time	Area	Activities Monitored*	Equipment
1	800-1440	SS-43	<input checked="" type="checkbox"/> VC <input type="checkbox"/> GS <input type="checkbox"/> GP <input type="checkbox"/> SS <input type="checkbox"/> MWS <input type="checkbox"/> SWSS	chainsaw, loggers chainsaws were
			<input type="checkbox"/> VC <input type="checkbox"/> GS <input type="checkbox"/> GP <input type="checkbox"/> SS <input type="checkbox"/> MWS <input type="checkbox"/> SWSS	whacker, front-loader, tractor
			<input type="checkbox"/> VC <input type="checkbox"/> GS <input type="checkbox"/> GP <input type="checkbox"/> SS <input type="checkbox"/> MWS <input type="checkbox"/> SWSS	
			<input type="checkbox"/> VC <input type="checkbox"/> GS <input type="checkbox"/> GP <input type="checkbox"/> SS <input type="checkbox"/> MWS <input type="checkbox"/> SWSS	
			<input type="checkbox"/> VC <input type="checkbox"/> GS <input type="checkbox"/> GP <input type="checkbox"/> SS <input type="checkbox"/> MWS <input type="checkbox"/> SWSS	

* VC = Vegetation Clearing, GS = Gamma Scanning, GP = Geophysical Survey, SS = Soil Sampling, MWS = Monitor Well Sampling, SWSS = Surface Water and Sediment Sampling

MONITORING RESULTS

ID	Protected Resources Encountered	Area	AMM's Implemented	Residual Impacts
1	Santa Susana Tanager	SS-43	VC1 , VC2, VC10	None
1	Dudleya	SS-43	VC1, VC2, VC9	None
1	calif. red-legged frog habitat	SS-43	VC5, GEN11	Cover reduced
1	Oaks	SS-43	Ventura Co. Trimming Guidelines	Trimmed

NOTES AND RECOMMENDATIONS:

LDI working area west of deep canyon on NE side of SS-43.

All ~~sensitive~~ sensitive resources avoided, including 300-ft buffer around CRLF potential ponded habitat.

Biologist Signature: [Signature]

Date: 10/20/10

HGL Field Supervisor Signature: [Signature]

Date: 10/20/10

BIOLOGICAL RESOURCE MONITORING FORM

ACTIVITIES MONITORED

ID	Time	Area	Activities Monitored*	Equipment
1	0800-4130	SS-43	<input checked="" type="checkbox"/> VC <input type="checkbox"/> GS <input type="checkbox"/> GP <input type="checkbox"/> SS <input type="checkbox"/> MWS <input type="checkbox"/> SWSS	10m ³ s ch ⁻ saw, weed whacker
			<input type="checkbox"/> VC <input type="checkbox"/> GS <input type="checkbox"/> GP <input type="checkbox"/> SS <input type="checkbox"/> MWS <input type="checkbox"/> SWSS	"front loader tractor, ch ⁻ ffo,
			<input type="checkbox"/> VC <input type="checkbox"/> GS <input type="checkbox"/> GP <input type="checkbox"/> SS <input type="checkbox"/> MWS <input type="checkbox"/> SWSS	skidster w/ mower
			<input type="checkbox"/> VC <input type="checkbox"/> GS <input type="checkbox"/> GP <input type="checkbox"/> SS <input type="checkbox"/> MWS <input type="checkbox"/> SWSS	
			<input type="checkbox"/> VC <input type="checkbox"/> GS <input type="checkbox"/> GP <input type="checkbox"/> SS <input type="checkbox"/> MWS <input type="checkbox"/> SWSS	

* VC = Vegetation Clearing, GS = Gamma Scanning, GP = Geophysical Survey, SS = Soil Sampling, MWS = Monitor Well Sampling, SWSS = Surface Water and Sediment Sampling

MONITORING RESULTS

ID	Protected Resources Encountered	Area	AMM's Implemented	Residual Impacts
1	Santa Susana tree plant	SS-43	VC1, VC2, VC10	1 plant uprooted along foot path.
1	Dudleya sp.	SS-43	VC1, VC2, VC9	None.
1	Calif. red-legged frog habitat	SS-43	VC5, GEN11	Cover reduced
1	Oaks	SS-43	Ventura Co. Trimming Guidelines	Trimmed

NOTES AND RECOMMENDATIONS:

Front loader and skidster staying outside of CRLF 300-ft buffer

One Santa Susana tree plant uprooted along foot path through rocks near lined outfall pond. This is one of the only ways into the backside of the site, so the impact was likely unavoidable over the course of the project.

Biologist Signature: [Signature]

Date: 10/21/10

HGL Field Supervisor Signature: [Signature]

Date: 10/25/10

BIOLOGICAL RESOURCE MONITORING FORM

ENVICOM CORPORATION

Date: 10/22/2010 Friday

Biologist: Scott Werner

ACTIVITIES MONITORED

Sub-area	Survey Section	Time	Activities Monitored*	Equipment Used
8	SS-49	0800-1500	VC	Weed whackers, loppers, chainsaw, skidster with chipper
8	SS-48	0800-1500	VC	Weed whackers, chainsaw

* VC = Vegetation Clearing, GS = Gamma Scanning, GP = Geophysical Survey, SS = Soil Sampling, MWS = Monitor Well Sampling, SWSS = Surface Water and Sediment Sampling

MONITORING RESULTS

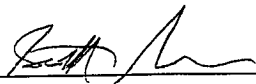
Survey Section	Protected Resources Encountered	AMM's Implemented	Residual Impacts
SS-48	Santa Susana tarplant	VC-1, VC-2, VC-10	None
SS-48	Dudleya	VC-1, VC-2, VC-9	None
SS-48, SS-49	Coastal California gnatcatcher habitat	GEN-8	Habitat quality reduced
SS-48, SS-49	Protected Trees (coast live oak, walnut, elderberry)	Ventura County Trimming Guidelines	Trees trimmed, some small individuals not protected under the ordinance were removed.
SS-48, SS-49	Habitat for California Special Concern Species	Monitor present	Habitat quality reduced

NOTES AND RECOMMENDATIONS:


Clearance Reports for SS-48, SS-49 dated 10/19/2010 identified suitable habitat for the following California Special Concern species: coast horned lizard (*Phrynosoma blainvillii*), San Diego desert woodrat (*Neotoma lepida intermedia*), and coast patch-nosed snake (*Salvadora hexalepis virgulata*). None detected at site.

LDI crew trimmed vegetation mainly in eastern and southern portion of SS-48 and north-central corner of SS-49.

1 large southern alligator lizard relocated to an area beyond transmission tower at eastern border of SS-48. 2 rattlesnakes removed from site.

Biologist Signature: 

Date: 10/22/10

HGL Field Supervisor Signature: 

Date: 10/29/10

BIOLOGICAL RESOURCE MONITORING FORM

ENVICOM CORPORATION

Date: 10/25/2010 Monday

Biologist: Scott Werner

ACTIVITIES MONITORED

Sub-area	Survey Section	Time	Activities Monitored*	Equipment Used
8	SS-49	0800-1500	VC	Weed whackers, loppers, chainsaw, skidster with chipper
8	SS-48	0800-1500	VC	Weed whackers
5C	SS-7	1315-1400	SS	Hand trowel

* VC = Vegetation Clearing, GS = Gamma Scanning, GP = Geophysical Survey, SS = Soil Sampling, MWS = Monitor Well Sampling, SWSS = Surface Water and Sediment Sampling

MONITORING RESULTS

Survey Section	Protected Resources Encountered	AMM's Implemented	Residual Impacts
SS-48	Santa Susana tarplant	VC-1, VC-2, VC-10	None
SS-48	Dudleya	VC-1, VC-2, VC-9	None
SS-49	Malibu baccharis	VC-1, VC-2	None. Although some plants were flagged by the biologist, the VC crew did not encounter this species today.
SS-48, SS-49	Coastal California gnatcatcher habitat	GEN-8	Habitat quality reduced
SS-48, SS-49	Protected Trees (coast live oak, walnut, elderberry)	Ventura County Trimming Guidelines	Trees trimmed, some small individuals not protected under the ordinance were removed.
SS-48, SS-49	Habitat for California Special Concern Species	VC-1, VC-2, Monitor present	Habitat quality reduced
SS-7	Vernal pool, habitat for listed fairy shrimp	GEN-10, SS-1, SS-2	None (vernal pool avoided for today)

NOTES AND RECOMMENDATIONS:

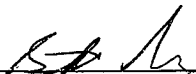
Clearance Reports for SS-48, SS-49 dated 10/19/2010 identified suitable habitat for the following California Special Concern species: coast horned lizard (*Phrynosoma blainvillii*), San Diego desert woodrat (*Neotoma lepida intermedia*), and coast patch-nosed snake (*Salvadora hexalepis virgulata*). None detected at site.

LDI crew trimmed vegetation in north-central corner of SS-49, and SS-48 is nearly done with VC.


1 big-eared woodrat (*Neotoma macrotis*) seen in SS-49 near large woodrat house.

SS-7 Vernal Pool: Soil Sampling crew has established a sample point in the center of vernal pool, due to the historical use of this site as a storage yard for radioactive material and the low profile of the pool and unique hydrology for water accumulation compared to the surrounding area. Proposed sampling consists of 1) approximately one gallon of dirt to be removed using a hand-trowel and from a depth of up to 6 inches, to be done as soon as possible, and 2) core sampling down to 10 feet using a small drilling rig. I informed Jim Anderson and Travis Cullen of Envicom of the proposed work in the vernal pool, and Travis called Mark Elvin of U.S. Fish and Wildlife Service. Elvin informed Cullen that damaging the hard pan of the vernal pool through surface and subsurface soil disturbance and potentially compromising the capacity of the pool to accumulate water is not covered under the current FWS Biological Opinion for the current EPA Radiological Study. Elvin indicated a willingness to work with EPA to achieve their sampling goals, but an amendment, along with a focused survey for fairy shrimp, would be required and would likely take at least several months.

I informed Soil Sampling crew leader Cliff Knight and he told me he would consult with his supervisor on potentially moving the sampling point outside of the vernal pool and get back to me the following day.

Biologist Signature: 

Date: 10/25/10

HGL Field Supervisor Signature: 

Date: 10/22/10

BIOLOGICAL RESOURCE MONITORING FORM

ENVICOM CORPORATION

Date: 10/26/2010 Tuesday

Biologist: Scott Werner

ACTIVITIES MONITORED

Sub-area	Survey Section	Time	Activities Monitored*	Equipment Used
5D	SS-58	0800-1430	VC	Weed whackers, loppers, chainsaw, skidster with chipper
5D	SS-58	1300-1415	GS	2 work trucks with winch
5C	SS-7	1415-1430	SS	Hand trowel

* VC = Vegetation Clearing, GS = Gamma Scanning, GP = Geophysical Survey, SS = Soil Sampling, MWS = Monitor Well Sampling, SWSS = Surface Water and Sediment Sampling

MONITORING RESULTS

Survey Section	Protected Resources Encountered	AMM's Implemented	Residual Impacts
SS-58	Braunton's milkvetch	VC-1, VC-2, VC-10, GS-1	None
SS-58	Malibu baccharis	VC-1, VC-2	None.
SS-58	Coastal California gnatcatcher habitat	GEN-8	Habitat quality reduced
SS-58	Protected Trees (coast live oak, walnut, elderberry)	Ventura County Trimming Guidelines	Trees trimmed, some small individuals not protected under the ordinance were removed.
SS-58	Coast horned lizards	Relocated offsite by biologist	Relocated (see notes below).
SS-58	Habitat for California Special Concern Species	VC-1, VC-2, Monitor present	Habitat quality reduced
SS-7	Vernal pool, habitat for listed fairy shrimp	GEN-10, SS-1, SS-2	None (sampling point moved outside of vernal pool's marked perimeter)

NOTES AND RECOMMENDATIONS:

Clearance Report for SS-58 dated 9/20/2010 identified suitable habitat for the following California Special Concern species: coast horned lizard (*Phrynosoma blainvillii*), coast patch-nosed snake (*Salvadora hexalepis virgulata*), and silvery legless lizard (*Anniella pulchra pulchra*). Coast horned lizards detected and described below.

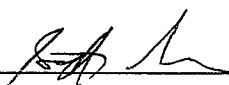
LDI crew trimmed vegetation on top of hill and along north slope on western side of SS-58 now that the roads are dry after last week's rains.

Loggerhead Shrike (California Special Concern when nesting) heard calling at 0730 hrs from LDI staging area. Bird was located somewhere Building 4015 and is likely the same one seen periodically in the area since August.


3 coast horned lizards found on SS-58 and relocated to suitable habitat area east of SS-58 (and off of Area IV) at UTM 342357E, 3788401N. First was a very young lizard found at 341957E, 3788563N. Second was adult (77mm SVL) found at 341991E, 3788593N. Third was adult (68mm SVL) found at 342001E, 3788586N.

SS-7 Vernal Pool (See 10/25/10 daily monitoring report): Chelsea informed me that they would be moving the proposed vernal pool soil sampling site to just outside the vernal pool. I inspected the sampling point after completion and it was conducted satisfactorily with respect to avoiding the vernal pool.

Gamma scanning crew set up a test area for the handcart and winch operation for steep slopes. Stakes were set up around several Braunton's milkvetch in the area for easy visibility by the scanning crew. Hilltop start point for the 400-foot route is located at UTM 342101E, 3788571N. End point down the slope is at 342131E, 3788676N. Test is scheduled for 10/27/10.

Biologist Signature: 

Date: 10/26/10

HGL Field Supervisor Signature: 

Date: 10/29/10

BIOLOGICAL RESOURCE MONITORING FORM

ENVICOM CORPORATION

Date: 10/27/2010 Wednesday

Biologist: Scott Werner

ACTIVITIES MONITORED

Sub-area	Survey Section	Time	Activities Monitored*	Equipment Used
5D	SS-58	0800-1430	VC	Weed whackers, loppers, chainsaw, skidster with chipper

* VC = Vegetation Clearing, GS = Gamma Scanning, GP = Geophysical Survey, SS = Soil Sampling, MWS = Monitor Well Sampling, SWSS = Surface Water and Sediment Sampling

MONITORING RESULTS

Survey Section	Protected Resources Encountered	AMM's Implemented	Residual Impacts
SS-58	Braunton's milkvetch	VC-1, VC-2, VC-10, GS-1	None
SS-58	Malibu baccharis	VC-1, VC-2	None.
SS-58	Coastal California gnatcatcher habitat	GEN-8	Habitat quality reduced
SS-58	Protected Trees (coast live oak, walnut, elderberry)	Ventura County Trimming Guidelines	Trees trimmed, some small individuals not protected under the ordinance were removed.
SS-58	Habitat for California Special Concern Species	VC-1, VC-2, Monitor present	Habitat quality reduced

NOTES AND RECOMMENDATIONS:

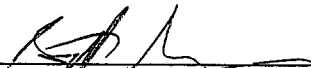
Clearance Report for SS-58 dated 9/20/2010 identified suitable habitat for the following California Special Concern species: coast horned lizard (*Phrynosoma blainvillii*), coast patch-nosed snake (*Salvadora hexalepis virgulata*), and silvery legless lizard (*Anniella pulchra pulchra*). None of these species observed today.

LDI crew trimmed vegetation on along north slope of SS-58.

Loggerhead Shrike (California Special Concern when nesting) heard calling at 0730 hrs from LDI staging area. Bird was located somewhere Building 4015 and is likely the same one seen periodically in the area since August.

One medium-large southern alligator lizard found in SS-58 relocated to oak woodland outside and to the east of SS-58. One young southern pacific rattlesnake (length 13 in) relocated from SS-58 to rattlesnake alley.

Gamma scanning crew did not conduct their scheduled handcart/winch test on SS-58, as described in 10/26/10 daily monitoring report.

Biologist Signature: 

Date: 10/27/10

HGL Field Supervisor Signature: 

Date: 10/29/10

BIOLOGICAL RESOURCE MONITORING FORM

ACTIVITIES MONITORED

ID	Time	Area	Activities Monitored*	Equipment
1	0800	5557	<input checked="" type="checkbox"/> VC <input type="checkbox"/> GS <input type="checkbox"/> GP <input type="checkbox"/> SS <input type="checkbox"/> MWS <input type="checkbox"/> SWSS	Hand tools, hand saw
	1500	5558	<input type="checkbox"/> VC <input type="checkbox"/> GS <input type="checkbox"/> GP <input type="checkbox"/> SS <input type="checkbox"/> MWS <input type="checkbox"/> SWSS	Hand tools, hand saw
			<input type="checkbox"/> VC <input type="checkbox"/> GS <input type="checkbox"/> GP <input type="checkbox"/> SS <input type="checkbox"/> MWS <input type="checkbox"/> SWSS	Hand tools, hand saw
			<input type="checkbox"/> VC <input type="checkbox"/> GS <input type="checkbox"/> GP <input type="checkbox"/> SS <input type="checkbox"/> MWS <input type="checkbox"/> SWSS	
			<input type="checkbox"/> VC <input type="checkbox"/> GS <input type="checkbox"/> GP <input type="checkbox"/> SS <input type="checkbox"/> MWS <input type="checkbox"/> SWSS	

* VC = Vegetation Clearing, GS = Gamma Scanning, GP = Geophysical Survey, SS = Soil Sampling, MWS = Monitor Well Sampling, SWSS = Surface Water and Sediment Sampling

MONITORING RESULTS

ID	Protected Resources Encountered	Area	AMM's Implemented	Residual Impacts
1	Encountered milkvetch	5559	GEN-4, VC-5:	NO impact
1	Delphinium brodiaeoides		Avoid mowing roads	NO impact
1	most like delphinium		HGL management protocols for mowing	NO impact
1	all types of plants		Protect per Native American request	NO impact
1	white. Sun.		VC-10,	NO impact
1	area a sensitive resource			

NOTES AND RECOMMENDATIONS:

No resources milkvetch in area of VC today, but close-by. No delphinium brodiaeoides in area of VC today, but close by - some flagged by me. Flagged the elderberry, white sage, Santa Susana tarplant. Tarplants on rock outcrops at eastern boundary of unit, crews not yet working there.

Biologist Signature: Carl W. Palmer

Date: 29 Oct 2010

HGL Field Supervisor Signature: Melissa Peltier-Melton

Date: 10/29/10

BIOLOGICAL RESOURCE MONITORING FORM

ACTIVITIES MONITORED

ID	Time	Area	Activities Monitored*	Equipment
1	0800	SS58	<input checked="" type="checkbox"/> VC <input type="checkbox"/> GS <input type="checkbox"/> GP <input type="checkbox"/> SS <input type="checkbox"/> MWS <input type="checkbox"/> SWSS	Hand tools, chainsaws
			<input type="checkbox"/> VC <input type="checkbox"/> GS <input type="checkbox"/> GP <input type="checkbox"/> SS <input type="checkbox"/> MWS <input type="checkbox"/> SWSS	weed whacker, mower,
			<input type="checkbox"/> VC <input type="checkbox"/> GS <input type="checkbox"/> GP <input type="checkbox"/> SS <input type="checkbox"/> MWS <input type="checkbox"/> SWSS	chipper, tractor
			<input type="checkbox"/> VC <input type="checkbox"/> GS <input type="checkbox"/> GP <input type="checkbox"/> SS <input type="checkbox"/> MWS <input type="checkbox"/> SWSS	
			<input type="checkbox"/> VC <input type="checkbox"/> GS <input type="checkbox"/> GP <input type="checkbox"/> SS <input type="checkbox"/> MWS <input type="checkbox"/> SWSS	

* VC = Vegetation Clearing, GS = Gamma Scanning, GP = Geophysical Survey, SS = Soil Sampling, MWS = Monitor Well Sampling, SWSS = Surface Water and Sediment Sampling

MONITORING RESULTS

ID	Protected Resources Encountered	Area	AMM's Implemented	Residual Impacts
1	Coast Live oaks	SS58	GEN-A, VC-3 avoid, minimize impacts	None
1	Blue elderberry			None
1	white Sage			None
1	Blue elder berry		VC-9	None
1	Dudleya lanceolata			None
1	Santa Susana tarplant			None
1	Big-eared woodrat nests			None
1	False Indigo bush			None

NOTES AND RECOMMENDATIONS:

No *Fraunhoferia* or *Malibu baccharis* in work area.
Flagged several *santa susana tarplants*, blue elderberry,
and white sage.

Flagged small population of FALSE Indigo Bush in
canyon. This species is very uncommon in the se
mountains, and is host plant for official state
butterfly, California dogface

Flagged ca 6 nests of big-eared woodrat, all ^{but one} at
base of oak trees, another in poison oak

Flagged several Lance-leaf *Dudleyas* (small population)
in accordance with our policy to protect all *dudleyas* that
resemble listed species

Biologist Signature: Carl Wimmer

Date: 1 Nov 2010

HGL Field Supervisor Signature: John Paul McMan

Date: 11/1/10

BIOLOGICAL RESOURCE MONITORING FORM

ACTIVITIES MONITORED

ID	Time	Area	Activities Monitored*	Equipment
1	0800	SS58	<input checked="" type="checkbox"/> VC <input type="checkbox"/> GS <input type="checkbox"/> GP <input type="checkbox"/> SS <input type="checkbox"/> MWS <input type="checkbox"/> SWSS	Hand tools, crew saw
1	1500	SS58	<input type="checkbox"/> VC <input type="checkbox"/> GS <input type="checkbox"/> GP <input type="checkbox"/> SS <input type="checkbox"/> MWS <input type="checkbox"/> SWSS	Hand tools, crew saw
			<input type="checkbox"/> VC <input type="checkbox"/> GS <input type="checkbox"/> GP <input type="checkbox"/> SS <input type="checkbox"/> MWS <input type="checkbox"/> SWSS	Hand tools, crew saw
			<input type="checkbox"/> VC <input type="checkbox"/> GS <input type="checkbox"/> GP <input type="checkbox"/> SS <input type="checkbox"/> MWS <input type="checkbox"/> SWSS	
			<input type="checkbox"/> VC <input type="checkbox"/> GS <input type="checkbox"/> GP <input type="checkbox"/> SS <input type="checkbox"/> MWS <input type="checkbox"/> SWSS	

* VC = Vegetation Clearing, GS = Gamma Scanning, GP = Geophysical Survey, SS = Soil Sampling, MWS = Monitor Well Sampling, SWSS = Surface Water and Sediment Sampling

MONITORING RESULTS

ID	Protected Resources Encountered	Area	AMM's Implemented	Residual Impacts
1	coast live oaks blue elderberry		GP-4, VC-3	none
1	white sage			none
1	Delonix linearis		VC-9	none
1	Big-eared woodrat 2 nests			minor damage to nests
1	False Indigo bush			
1	California-Fuchsia			

NOTES AND RECOMMENDATIONS:

No *Tharion's milkvetch* or *Mat-lia baccharis* in work area.
 There are several blue elderberry and white sage in work area.
 - Monitored clearance near *Delonix linearis* - no damage occurred.
 - Monitored partial clearance around false indigo bushes - still some weeds to be done to eradicate.
 - Flagged small population of Calif. - Fuchsia (*Fuchsia coccinea*) up some as important nesting for wintering hummingbirds and for site recovery. Monitored clearants, most remained intact.
 - Monitored clearance at big-eared woodrat nests. Some minor damage, and nests left exposed due to removal of surrounding vegetation.
 * Flagged base of oak tree yellow and black tape - yellowjacket nest within (*Vespula pensylvanica*).

Biologist Signature: Carl W. Palmer Date: 2 Nov 2010
 HGL Field Supervisor Signature: John P. McLean Date: 11/2/10

BIOLOGICAL RESOURCE MONITORING FORM

ACTIVITIES MONITORED

ID	Time	Area	Activities Monitored*	Equipment
1	0800 -	SS58	<input checked="" type="checkbox"/> VC <input type="checkbox"/> GS <input type="checkbox"/> GP <input type="checkbox"/> SS <input type="checkbox"/> MWS <input type="checkbox"/> SWSS	Hand tools, chainsaws,
	1500		<input type="checkbox"/> VC <input type="checkbox"/> GS <input type="checkbox"/> GP <input type="checkbox"/> SS <input type="checkbox"/> MWS <input type="checkbox"/> SWSS	weed whacker, mower
			<input type="checkbox"/> VC <input type="checkbox"/> GS <input type="checkbox"/> GP <input type="checkbox"/> SS <input type="checkbox"/> MWS <input type="checkbox"/> SWSS	chipper, tractor
			<input type="checkbox"/> VC <input type="checkbox"/> GS <input type="checkbox"/> GP <input type="checkbox"/> SS <input type="checkbox"/> MWS <input type="checkbox"/> SWSS	
			<input type="checkbox"/> VC <input type="checkbox"/> GS <input type="checkbox"/> GP <input type="checkbox"/> SS <input type="checkbox"/> MWS <input type="checkbox"/> SWSS	

* VC = Vegetation Clearing, GS = Gamma Scanning, GP = Geophysical Survey, SS = Soil Sampling, MWS = Monitor Well Sampling, SWSS = Surface Water and Sediment Sampling

MONITORING RESULTS

ID	Protected Resources Encountered	Area	AMM's Implemented	Residual Impacts
1	Coast Live Oak			None
1	blue elderberry			
1	Big-eared Woodrat no sks			None
1	Braunton's milkvetch		GEN-4, VC-3	None
1	Malibu Baccharis			None
1	False Indigo			

NOTES AND RECOMMENDATIONS:

Many pre-flagged Braunton's milkvetch and Malibu baccharis in work area toward west. Work in area not completed on previous days - now returning to complete

Small pocket of False Indigo flagged and retained while clearing

Biologist Signature: Carl Johnson

Date: 5 Nov 2010

HGL Field Supervisor Signature: Kevin Kelly

Date: 11/10

BIOLOGICAL RESOURCE MONITORING FORM

ACTIVITIES MONITORED

ID	Time	Area	Activities Monitored*	Equipment
1	0800 - 1500	5558	<input checked="" type="checkbox"/> VC <input type="checkbox"/> GS <input type="checkbox"/> GP <input type="checkbox"/> SS <input type="checkbox"/> MWS <input type="checkbox"/> SWSS	hand tools, chain saws
			<input type="checkbox"/> VC <input type="checkbox"/> GS <input type="checkbox"/> GP <input type="checkbox"/> SS <input type="checkbox"/> MWS <input type="checkbox"/> SWSS	weed whacker, mower
			<input type="checkbox"/> VC <input type="checkbox"/> GS <input type="checkbox"/> GP <input type="checkbox"/> SS <input type="checkbox"/> MWS <input type="checkbox"/> SWSS	chipper, tractor
			<input type="checkbox"/> VC <input type="checkbox"/> GS <input type="checkbox"/> GP <input type="checkbox"/> SS <input type="checkbox"/> MWS <input type="checkbox"/> SWSS	
			<input type="checkbox"/> VC <input type="checkbox"/> GS <input type="checkbox"/> GP <input type="checkbox"/> SS <input type="checkbox"/> MWS <input type="checkbox"/> SWSS	

* VC = Vegetation Clearing, GS = Gamma Scanning, GP = Geophysical Survey, SS = Soil Sampling, MWS = Monitor Well Sampling, SWSS = Surface Water and Sediment Sampling

MONITORING RESULTS

ID	Protected Resources Encountered	Area	AMM's Implemented	Residual Impacts
1	Coast live oak			None
1	blue elderberry			
1	Big-eared woodrat			None
1	Braunton's milkvetch		GEN 4, VC-3	fewer than 10 damaged
1	Malibu beachcreeper			
1	Coast horned lizard			4 juveniles relocated

NOTES AND RECOMMENDATIONS:

- * One rattlesnake encountered, unable to capture, dove in hole.
- * Four juvenile coast horned lizards captured and relocated to ridge line to SE of water tank.
- * Yellow jacket nest was exterminated today.

Biologist Signature: Curt Wisner

Date: 4 Nov, 2010

HGL Field Supervisor Signature: [Signature]

Date: 11/1/10

BIOLOGICAL RESOURCE MONITORING FORM

ACTIVITIES MONITORED

ID	Time	Area	Activities Monitored*	Equipment
1	0800 - 1500	SS51	<input checked="" type="checkbox"/> VC <input type="checkbox"/> GS <input type="checkbox"/> GP <input type="checkbox"/> SS <input type="checkbox"/> MWS <input type="checkbox"/> SWSS	hand tools, chain saws,
			<input type="checkbox"/> VC <input type="checkbox"/> GS <input type="checkbox"/> GP <input type="checkbox"/> SS <input type="checkbox"/> MWS <input type="checkbox"/> SWSS	mower, chopper,
			<input type="checkbox"/> VC <input type="checkbox"/> GS <input type="checkbox"/> GP <input type="checkbox"/> SS <input type="checkbox"/> MWS <input type="checkbox"/> SWSS	tractor, loader
			<input type="checkbox"/> VC <input type="checkbox"/> GS <input type="checkbox"/> GP <input type="checkbox"/> SS <input type="checkbox"/> MWS <input type="checkbox"/> SWSS	
			<input type="checkbox"/> VC <input type="checkbox"/> GS <input type="checkbox"/> GP <input type="checkbox"/> SS <input type="checkbox"/> MWS <input type="checkbox"/> SWSS	

* VC = Vegetation Clearing, GS = Gamma Scanning, GP = Geophysical Survey, SS = Soil Sampling, MWS = Monitor Well Sampling, SWSS = Surface Water and Sediment Sampling

MONITORING RESULTS

ID	Protected Resources Encountered	Area	AMM's Implemented	Residual Impacts
1	Braunton's milkvetch		Gen-4, VC-3	< 10 individuals damaged
1	Malibu baccharis			none
1	Coast horned lizard			none
1	Plummer's Mariposa			none

NOTES AND RECOMMENDATIONS:

Two juvenile coast horned lizards captured, held safely to completion of work, released at original location. Biologist recommends release at original location, rather than relocation due to considerations of habitat suitability, and especially in view of anticipated Gamma Scan by mallet or by hand has low probability of causing significant mortality of released animals.

Three fruiting Mariposa lilies, probably Plummer's, observed on north slope in milkvetch/Malibu baccharis area. No current growth, plants currently dormant below ground safe from harm from activities. Recommend routine to watch for first growth of leaves in late Fall through winter and spring, and then protect from scanning activity.

Biologist Signature: Carl W. Shuman

Date: 5 Nov 2010

HGL Field Supervisor Signature: _____

Date: 11/5/10

Date: Nov 8, 2010

Sheet 1 of 1

BIOLOGICAL RESOURCE MONITORING FORM

ACTIVITIES MONITORED

ID	Time	Area	Activities Monitored*	Equipment
1	0800 - 1500	SS51	<input checked="" type="checkbox"/> VC <input type="checkbox"/> GS <input type="checkbox"/> GP <input type="checkbox"/> SS <input type="checkbox"/> MWS <input type="checkbox"/> SWSS	Hand tools Chain saw,
			<input type="checkbox"/> VC <input type="checkbox"/> GS <input type="checkbox"/> GP <input type="checkbox"/> SS <input type="checkbox"/> MWS <input type="checkbox"/> SWSS	Weed whacker
			<input type="checkbox"/> VC <input type="checkbox"/> GS <input type="checkbox"/> GP <input type="checkbox"/> SS <input type="checkbox"/> MWS <input type="checkbox"/> SWSS	Tractor, Motor/Generator
			<input type="checkbox"/> VC <input type="checkbox"/> GS <input type="checkbox"/> GP <input type="checkbox"/> SS <input type="checkbox"/> MWS <input type="checkbox"/> SWSS	Loader
			<input type="checkbox"/> VC <input type="checkbox"/> GS <input type="checkbox"/> GP <input type="checkbox"/> SS <input type="checkbox"/> MWS <input type="checkbox"/> SWSS	

* VC = Vegetation Clearing, GS = Gamma Scanning, GP = Geophysical Survey, SS = Soil Sampling, MWS = Monitor Well Sampling, SWSS = Surface Water and Sediment Sampling

MONITORING RESULTS

ID	Protected Resources Encountered	Area	AMM's Implemented	Residual Impacts
1	Braunton's milkvetch	SS51	VC-3, GFN-4	Small numbers of living plants damage incidental.
1	Malibu Baccharis			Small numbers damaged incidental.
1	Plummer's Manriposa			None

NOTES AND RECOMMENDATIONS:

Area has large numbers of milkvetch and Baccharis, difficult to completely avoid especially when dragging cut piles to clearing area. Workers were very careful and did little damage.

Flagged and cut Poison-Oak; Workers had trouble recognizing plants here on open slopes without leaves.

Several stalks of Plummer's manriposa noted in area near GPS coord. (No satellites available).

No damage at this time - dormant. Area will need to be closely monitored during scanning.

No horned lizards active or evident. Too cold, air temp ~ 65° max, ground temp probably 55-60° F.

Biologist Signature: Carl Wiseman

Date: 8 Nov 2010

HGL Field Supervisor Signature: William R. Johnson

Date: 11/8/10

Date: Nov 9, 2010

Sheet 1 of 1

BIOLOGICAL RESOURCE MONITORING FORM

Subarea 8

ACTIVITIES MONITORED

ID	Time	Area	Activities Monitored*	Equipment
	0800 -	SS51	<input checked="" type="checkbox"/> VC <input type="checkbox"/> GS <input type="checkbox"/> GP <input type="checkbox"/> SS <input type="checkbox"/> MWS <input type="checkbox"/> SWSS	hand tools,
	1500		<input type="checkbox"/> VC <input type="checkbox"/> GS <input type="checkbox"/> GP <input type="checkbox"/> SS <input type="checkbox"/> MWS <input type="checkbox"/> SWSS	chain saws, mower
			<input type="checkbox"/> VC <input type="checkbox"/> GS <input type="checkbox"/> GP <input type="checkbox"/> SS <input type="checkbox"/> MWS <input type="checkbox"/> SWSS	chipper,
			<input type="checkbox"/> VC <input type="checkbox"/> GS <input type="checkbox"/> GP <input type="checkbox"/> SS <input type="checkbox"/> MWS <input type="checkbox"/> SWSS	tractor loader
			<input type="checkbox"/> VC <input type="checkbox"/> GS <input type="checkbox"/> GP <input type="checkbox"/> SS <input type="checkbox"/> MWS <input type="checkbox"/> SWSS	

* VC = Vegetation Clearing, GS = Gamma Scanning, GP = Geophysical Survey, SS = Soil Sampling, MWS = Monitor Well Sampling, SWSS = Surface Water and Sediment Sampling

MONITORING RESULTS

ID	Protected Resources Encountered	Area	AMM's Implemented	Residual Impacts
1	Braunton's milkvetch	SS51	Gen-4, VC-3	Many individuals in area, some incidental damage unavoidable
1	Malibu baccharis			
1	Coast horned lizard			
1	Plummer's maniriposa			

5 plants damaged?

NOTES AND RECOMMENDATIONS:

Braunton's milkvetch; Many hundreds of plants flagged, and veg cleared. Difficult to clear w/o some damage -

Malibu baccharis - many hundreds flagged and cleared. Some damage - plants will likely recover

Coast horned lizard - one juvenile captured, re-released at end of day in safe area already cleared

Plummer's maniriposa more fruits observed in area - need to monitor if gamma scan during growing season

Biologist Signature: Paul Wilson

Date: 9 Nov 2010

HGL Field Supervisor Signature: Julie Ann Peltz Milder

Date: 11/9/10

BIOLOGICAL RESOURCE MONITORING FORM

ACTIVITIES MONITORED

ID	Time	Area	Activities Monitored*	Equipment
1	0800 - 1500	5551	<input checked="" type="checkbox"/> VC <input type="checkbox"/> GS <input type="checkbox"/> GP <input type="checkbox"/> SS <input type="checkbox"/> MWS <input type="checkbox"/> SWSS <input type="checkbox"/> VC <input type="checkbox"/> GS <input type="checkbox"/> GP <input type="checkbox"/> SS <input type="checkbox"/> MWS <input type="checkbox"/> SWSS <input type="checkbox"/> VC <input type="checkbox"/> GS <input type="checkbox"/> GP <input type="checkbox"/> SS <input type="checkbox"/> MWS <input type="checkbox"/> SWSS <input type="checkbox"/> VC <input type="checkbox"/> GS <input type="checkbox"/> GP <input type="checkbox"/> SS <input type="checkbox"/> MWS <input type="checkbox"/> SWSS <input type="checkbox"/> VC <input type="checkbox"/> GS <input type="checkbox"/> GP <input type="checkbox"/> SS <input type="checkbox"/> MWS <input type="checkbox"/> SWSS	hand tools, chain saws mower, chipper loader, tractor

* VC = Vegetation Clearing, GS = Gamma Scanning, GP = Geophysical Survey, SS = Soil Sampling, MWS = Monitor Well Sampling, SWSS = Surface Water and Sediment Sampling

MONITORING RESULTS

ID	Protected Resources Encountered	Area	AMM's Implemented	Residual Impacts
1	Braunton's milk vetch	5551	Gen-4, VC-3	Many individuals in Area, some incidental damage
2	Malibu bacch.			Many individuals, some incidental damage
3	Coast Horned Lizard			none
4	Plummer's Mariposa			none
5	Blue Elderberry Calif Walnut			none

NOTES AND RECOMMENDATIONS:

Many flagged and cleared around them. Many are dead, evident by lack of old inflorescences, and ease of dislodge from trees. Workers are very good at avoiding live plants.

Many Malibu baccharis, relatively easy to recognize and avoided by workers

Coast horned lizard - none observed today on densely vegetated slopes in the west of 5551. One Alligator lizard captured and returned at end of day.

Plummer's mariposa - Several observed on mid-upper slopes; last year's fruit - no leaves - need to monitor during growing/flowering season unless scanned early in year

Blue Elderberry/Calif Walnut - All individuals flagged along west edge 5551 - tree area mowed. Some add'l cleanup needed in following days

Biologist Signature: Carl Wismer

Date: 10 Nov 2010

HGL Field Supervisor Signature: Leah Sperry

Date: 11/10/10

Date: 11/11/10

Sheet 1 of 1

BIOLOGICAL RESOURCE MONITORING FORM

ACTIVITIES MONITORED

ID	Time	Area	Activities Monitored*	Equipment
1	800-1500	SS-51	<input checked="" type="checkbox"/> VC <input type="checkbox"/> GS <input type="checkbox"/> GP <input type="checkbox"/> SS <input type="checkbox"/> MWS <input type="checkbox"/> SWSS	loppers, chainsaw, weed whacker vs,
			<input type="checkbox"/> VC <input type="checkbox"/> GS <input type="checkbox"/> GP <input type="checkbox"/> SS <input type="checkbox"/> MWS <input type="checkbox"/> SWSS	chainsaw, skidster w/ fork
			<input type="checkbox"/> VC <input type="checkbox"/> GS <input type="checkbox"/> GP <input type="checkbox"/> SS <input type="checkbox"/> MWS <input type="checkbox"/> SWSS	attach. mount.
			<input type="checkbox"/> VC <input type="checkbox"/> GS <input type="checkbox"/> GP <input type="checkbox"/> SS <input type="checkbox"/> MWS <input type="checkbox"/> SWSS	
			<input type="checkbox"/> VC <input type="checkbox"/> GS <input type="checkbox"/> GP <input type="checkbox"/> SS <input type="checkbox"/> MWS <input type="checkbox"/> SWSS	

* VC = Vegetation Clearing, GS = Gamma Scanning, GP = Geophysical Survey, SS = Soil Sampling, MWS = Monitor Well Sampling, SWSS = Surface Water and Sediment Sampling

MONITORING RESULTS

ID	Protected Resources Encountered	Area	AMM's Implemented	Residual Impacts
1	Brown's milkvetch	SS-51	VC1, VC2, VC3	Nearby cover reduced
#1	Oaks, elderberries	SS-51	Vta trimming guidelines	Trimmed, some smaller elderberries left standing per request of Native Amer. reman monitor.
#1	Malibu baccharis	SS-51	VC1, VC2	Approx 3 plants damaged/trimmed on accident.
#1	Plummer's manzanita	SS-51	VC1, VC2	Non-dormant presently
1	Calif. gnatcatcher hab	SS-51	GEN 8	Habitat quality reduced

NOTES AND RECOMMENDATIONS:

1 Southern alligator lizard moved ~~off~~ from road to gate at edge of SS51 / Area IV.

Biologist Signature: [Signature]

Date: 11/11/10

HGL Field Supervisor Signature: [Signature]

Date: 11/11/10

Date: 11/12/10

Sheet 1 of 1

BIOLOGICAL RESOURCE MONITORING FORM

ACTIVITIES MONITORED

ID	Time	Area	Activities Monitored*	Equipment
1	800-1415	SS-51	<input checked="" type="checkbox"/> VC <input type="checkbox"/> GS <input type="checkbox"/> GP <input type="checkbox"/> SS <input type="checkbox"/> MWS <input type="checkbox"/> SWSS	longer's chainsaw weed whacker's
			<input type="checkbox"/> VC <input type="checkbox"/> GS <input type="checkbox"/> GP <input type="checkbox"/> SS <input type="checkbox"/> MWS <input type="checkbox"/> SWSS	chipper, front-loading tractor
			<input type="checkbox"/> VC <input type="checkbox"/> GS <input type="checkbox"/> GP <input type="checkbox"/> SS <input type="checkbox"/> MWS <input type="checkbox"/> SWSS	
			<input type="checkbox"/> VC <input type="checkbox"/> GS <input type="checkbox"/> GP <input type="checkbox"/> SS <input type="checkbox"/> MWS <input type="checkbox"/> SWSS	
			<input type="checkbox"/> VC <input type="checkbox"/> GS <input type="checkbox"/> GP <input type="checkbox"/> SS <input type="checkbox"/> MWS <input type="checkbox"/> SWSS	

* VC = Vegetation Clearing, GS = Gamma Scanning, GP = Geophysical Survey, SS = Soil Sampling, MWS = Monitor Well Sampling, SWSS = Surface Water and Sediment Sampling

MONITORING RESULTS

ID	Protected Resources Encountered	Area	AMM's Implemented	Residual Impacts
1	Braunton's milkvetch	SS-51	VC1, VC2, VC3	Nearly gone, reduced.
1	Oaks, elderberries, Calif walnut	SS-51	V1a trimming guidelines	Some elderberries left standing per request of N. Amer. monitor.
1	Malinae baccharis	SS-51	VC1, VC2	None
1	Calif gnatcatcher habitat	SS-51	GEN8	Habitat quality reduced

NOTES AND RECOMMENDATIONS:

Veg crew working in NW corner off SS-51, in oak woodland and edge of chaparral.

Some additional milkvetch flagged, avoided.

Biologist Signature: [Signature] Date: 11/12/10

HGL Field Supervisor Signature: [Signature] Date: 11/12/10

BIOLOGICAL RESOURCE MONITORING FORM

ACTIVITIES MONITORED

ID	Time	Area	Activities Monitored*	Equipment
1	800-1500	SS-51	<input checked="" type="checkbox"/> VC <input type="checkbox"/> GS <input type="checkbox"/> GP <input type="checkbox"/> SS <input type="checkbox"/> MWS <input type="checkbox"/> SWSS	toppers, chainsaws, weed whackers, chipper, tank/skidsteer, front loader
2	1000-1500	SS-52	<input checked="" type="checkbox"/> VC <input type="checkbox"/> GS <input type="checkbox"/> GP <input type="checkbox"/> SS <input type="checkbox"/> MWS <input type="checkbox"/> SWSS	front loader, toppers, weed whackers, chainsaw
			<input type="checkbox"/> VC <input type="checkbox"/> GS <input type="checkbox"/> GP <input type="checkbox"/> SS <input type="checkbox"/> MWS <input type="checkbox"/> SWSS	
			<input type="checkbox"/> VC <input type="checkbox"/> GS <input type="checkbox"/> GP <input type="checkbox"/> SS <input type="checkbox"/> MWS <input type="checkbox"/> SWSS	
			<input type="checkbox"/> VC <input type="checkbox"/> GS <input type="checkbox"/> GP <input type="checkbox"/> SS <input type="checkbox"/> MWS <input type="checkbox"/> SWSS	

* VC = Vegetation Clearing, GS = Gamma Scanning, GP = Geophysical Survey, SS = Soil Sampling, MWS = Monitor Well Sampling, SWSS = Surface Water and Sediment Sampling

MONITORING RESULTS

ID	Protected Resources Encountered	Area	AMM's Implemented	Residual Impacts
1,2	Braunton's milkvetch	SS-51 SS-52	VC1, VC2, VC3	Nearby cover reduced, some mortality (below)
1	Oaks, elderberries, Walnuts	SS-51	Via G. Trimming guidelines	Trimmed some smaller unprotected walnuts/elderberries trimmed to ground
1	Malibu baccharis	SS-51	VC1, VC2	None
1,2	Calif. gnatcatcher habitat	SS-51, 52	GENS	Habitat quality reduced, trimming outside of nesting season

NOTES AND RECOMMENDATIONS:

Veg crew nearby line w/ SS-51, working in NW corner. Poison oak crew starting on NW corner of SS-52.

The following Braunton's milkvetch mortalities were recorded. All were old and brittle but still had recent seed pods and pubescent bark (compared to many milkvetch that are clearly dead onsite). All were likely knocked over on accident due to brittle stems during the past 1-2 weeks. Questionable whether they would have produced flowers in 2011 (i.e. old).

Plant	UTM	UTM	Flagged?
1	341791E	3788627N	N
2	341803E	3788638N	Y
3	341822E	3788651N	Y
4	341801E	3788680N	N

Also I saw that 1 milkvetch on E side of SS-51 is still standing after counted as false ~~on Sept 24~~ on Sept. 24. (see report) (UTM 342009E, 3788687N).

Biologist Signature: [Signature]

Date: 11/15/10

HGL Field Supervisor Signature: [Signature]

Date: 11/15/10

Date: 11/16/10

Sheet 1 of 1

BIOLOGICAL RESOURCE MONITORING FORM

ACTIVITIES MONITORED

ID	Time	Area	Activities Monitored*	Equipment
1	800-1400	SS-52	<input checked="" type="checkbox"/> VC <input type="checkbox"/> GS <input type="checkbox"/> GP <input type="checkbox"/> SS <input type="checkbox"/> MWS <input type="checkbox"/> SWSS	loggers chainsaws, weed whackers
			<input type="checkbox"/> VC <input type="checkbox"/> GS <input type="checkbox"/> GP <input type="checkbox"/> SS <input type="checkbox"/> MWS <input type="checkbox"/> SWSS	skid steer w/ chopper, front loader
			<input type="checkbox"/> VC <input type="checkbox"/> GS <input type="checkbox"/> GP <input type="checkbox"/> SS <input type="checkbox"/> MWS <input type="checkbox"/> SWSS	
			<input type="checkbox"/> VC <input type="checkbox"/> GS <input type="checkbox"/> GP <input type="checkbox"/> SS <input type="checkbox"/> MWS <input type="checkbox"/> SWSS	
			<input type="checkbox"/> VC <input type="checkbox"/> GS <input type="checkbox"/> GP <input type="checkbox"/> SS <input type="checkbox"/> MWS <input type="checkbox"/> SWSS	

* VC = Vegetation Clearing, GS = Gamma Scanning, GP = Geophysical Survey, SS = Soil Sampling, MWS = Monitor Well Sampling, SWSS = Surface Water and Sediment Sampling

MONITORING RESULTS

ID	Protected Resources Encountered	Area	AMM's Implemented	Residual Impacts
1	Braunton's millwetch	SS-52	V1, V2, V3	Nearby cover reduced
1	Oaks, elderberries, Weeden's	SS-52	V1a G. trimming ^{guidelines}	Trimmed
1	Malibu baccharis	SS-52	V1, V2	None
1	Calif. snatchedwren habitat	SS-52	GENE	Habitat quality reduced. Trimmed outside nesting season.

NOTES AND RECOMMENDATIONS:

Situation same as previous few days.

Biologist Signature: [Signature]
 HGL Field Supervisor Signature: [Signature]

Date: 11/16/10
 Date: 11/16/10

BIOLOGICAL RESOURCE MONITORING FORM

ACTIVITIES MONITORED

ID	Time	Area	Activities Monitored*	Equipment
1	800-1400	SS-52	<input checked="" type="checkbox"/> VC <input type="checkbox"/> GS <input type="checkbox"/> GP <input type="checkbox"/> SS <input type="checkbox"/> MWS <input type="checkbox"/> SWSS	loggers, chainsaws, weed whacker
			<input type="checkbox"/> VC <input type="checkbox"/> GS <input type="checkbox"/> GP <input type="checkbox"/> SS <input type="checkbox"/> MWS <input type="checkbox"/> SWSS	skidster w/brush, fuel loading
			<input type="checkbox"/> VC <input type="checkbox"/> GS <input type="checkbox"/> GP <input type="checkbox"/> SS <input type="checkbox"/> MWS <input type="checkbox"/> SWSS	tractors
			<input type="checkbox"/> VC <input type="checkbox"/> GS <input type="checkbox"/> GP <input type="checkbox"/> SS <input type="checkbox"/> MWS <input type="checkbox"/> SWSS	
			<input type="checkbox"/> VC <input type="checkbox"/> GS <input type="checkbox"/> GP <input type="checkbox"/> SS <input type="checkbox"/> MWS <input type="checkbox"/> SWSS	

* VC = Vegetation Clearing, GS = Gamma Scanning, GP = Geophysical Survey, SS = Soil Sampling, MWS = Monitor Well Sampling, SWSS = Surface Water and Sediment Sampling

MONITORING RESULTS

ID	Protected Resources Encountered	Area	AMM's Implemented	Residual Impacts
1	Brown's milkvetch	SS-52	V1, V2, V3	~3 plants damaged but not uprooted.
1	Oaks, elderberries, walnuts	SS-52	Ventura Co. trimming guidelines	Trimmed.
1	Malibu baccharis	SS-52	V1, V2	done A few plants trimmed (<5).
1	Calif. gnatcatcher habitat	SS-52	GEN8	Habitat quality reduced. Trimmed outside of bird nesting season.

NOTES AND RECOMMENDATIONS:

Continuing trimming in NW corner of SS-52.

A few protected plants damaged. Trimmed (see above) but LDI doing excellent job of avoiding flagged (and unflagged) plants.

Biologist Signature: [Signature]

HGL Field Supervisor Signature: [Signature]

Date: 11/17/10

Date: 11/17/10

Date: 11/18/10

Sheet 1 of 1

BIOLOGICAL RESOURCE MONITORING FORM

ACTIVITIES MONITORED

ID	Time	Area	Activities Monitored*	Equipment
1	800-1400	SS-52	<input checked="" type="checkbox"/> VC <input type="checkbox"/> GS <input type="checkbox"/> GP <input type="checkbox"/> SS <input type="checkbox"/> MWS <input type="checkbox"/> SWSS	Loggers chainsaws weed whackers
			<input type="checkbox"/> VC <input type="checkbox"/> GS <input type="checkbox"/> GP <input type="checkbox"/> SS <input type="checkbox"/> MWS <input type="checkbox"/> SWSS	skidster w/ chopper, front loader
			<input type="checkbox"/> VC <input type="checkbox"/> GS <input type="checkbox"/> GP <input type="checkbox"/> SS <input type="checkbox"/> MWS <input type="checkbox"/> SWSS	tractor.
			<input type="checkbox"/> VC <input type="checkbox"/> GS <input type="checkbox"/> GP <input type="checkbox"/> SS <input type="checkbox"/> MWS <input type="checkbox"/> SWSS	
			<input type="checkbox"/> VC <input type="checkbox"/> GS <input type="checkbox"/> GP <input type="checkbox"/> SS <input type="checkbox"/> MWS <input type="checkbox"/> SWSS	

* VC = Vegetation Clearing, GS = Gamma Scanning, GP = Geophysical Survey, SS = Soil Sampling, MWS = Monitor Well Sampling, SWSS = Surface Water and Sediment Sampling

MONITORING RESULTS

ID	Protected Resources Encountered	Area	AMM's Implemented	Residual Impacts
1	Brewer's milkvetch	SS-52	VC1, VC2, VC3	1 plant uprooted - SW corner of SS-52.
1	Malibu baccharis	SS-52	Ventura Co. Trimming Ordinance	None.
1	Oaks elderberries	SS-52	VC1, VC2	Trimmed.
1	Cabr. gnatcatcher habitat	SS-52	GENS	Habitat quality reduced. Trimmed outside of bird nesting season.

NOTES AND RECOMMENDATIONS:

LDI continued to work on W section of SS-52.

I flagged additional Walnuts and elderberries, and toyon w/ woodrat nests so that LDI can remove the extra small (unprotected) trees that they have left. Many trees less than 9.5 in. girth have been left standing, but these can be removed per Ventura Co. Trimming Ordinance.

Biologist Signature: [Signature]

Date: 11/18/10

HGL Field Supervisor Signature: [Signature]

Date: 11/18/10

Date: 11/19/10

Sheet 1 of 1

BIOLOGICAL RESOURCE MONITORING FORM

ACTIVITIES MONITORED

ID	Time	Area	Activities Monitored*	Equipment
1	7:00-14:30	SS-52	<input checked="" type="checkbox"/> VC <input type="checkbox"/> GS <input type="checkbox"/> GP <input type="checkbox"/> SS <input type="checkbox"/> MWS <input type="checkbox"/> SWSS	loppers, chainsaw, ch. pr., weed whacker
2	8:00-10:30	SS-51	<input type="checkbox"/> VC <input type="checkbox"/> GS <input type="checkbox"/> GP <input type="checkbox"/> SS <input type="checkbox"/> MWS <input type="checkbox"/> SWSS	loppers chainsaw
3	11:30-10:50	SS-2	<input type="checkbox"/> VC <input checked="" type="checkbox"/> GS <input type="checkbox"/> GP <input type="checkbox"/> SS <input type="checkbox"/> MWS <input type="checkbox"/> SWSS	ERGS
			<input type="checkbox"/> VC <input type="checkbox"/> GS <input type="checkbox"/> GP <input type="checkbox"/> SS <input type="checkbox"/> MWS <input type="checkbox"/> SWSS	
			<input type="checkbox"/> VC <input type="checkbox"/> GS <input type="checkbox"/> GP <input type="checkbox"/> SS <input type="checkbox"/> MWS <input type="checkbox"/> SWSS	

* VC = Vegetation Clearing, GS = Gamma Scanning, GP = Geophysical Survey, SS = Soil Sampling, MWS = Monitor Well Sampling, SWSS = Surface Water and Sediment Sampling

MONITORING RESULTS

ID	Protected Resources Encountered	Area	AMM's Implemented	Residual Impacts
1,2	Brown's milkvetch	SS-51, SS-52	VC1, VC2, VC3	3 plants damaged/uprooted
1,2	Malibu Larches	SS-52	VC1, VC2	2 plants damaged
1,2	Oaks, elderberries, walnuts	SS-51, SS-52	Ventura Co. Trimming Guidelines	Trimmed. Small unprotected trees removed.
1,2	Calif. gnatcatcher habitat	SS-51, SS-52	GENS	Habitat quality reduced. Trimmed outside of bird nesting season.
3	Riparian LBV Habitat	SS-12	GEN9 Arim App. N	None. ERGS in flat area, outside of channel. Monitored.

NOTES AND RECOMMENDATIONS:

SS-52 nearly completed for VC. E side still needs VC.

SS-51: some follow-up trimming of small, unprotected walnuts and elderberries.

Biologist Signature: [Signature]

Date: 11/19/10

HGL Field Supervisor Signature: [Signature]

Date: 11/19/10

BIOLOGICAL RESOURCE MONITORING FORM

ACTIVITIES MONITORED

ID	Time	Area	Activities Monitored*	Equipment
1	800-1410	SS-52	<input checked="" type="checkbox"/> VC <input type="checkbox"/> GS <input type="checkbox"/> GP <input type="checkbox"/> SS <input type="checkbox"/> MWS <input type="checkbox"/> SWSS	Loggers chainsaw, weed whacker,
			<input type="checkbox"/> VC <input type="checkbox"/> GS <input type="checkbox"/> GP <input type="checkbox"/> SS <input type="checkbox"/> MWS <input type="checkbox"/> SWSS	
			<input type="checkbox"/> VC <input type="checkbox"/> GS <input type="checkbox"/> GP <input type="checkbox"/> SS <input type="checkbox"/> MWS <input type="checkbox"/> SWSS	
			<input type="checkbox"/> VC <input type="checkbox"/> GS <input type="checkbox"/> GP <input type="checkbox"/> SS <input type="checkbox"/> MWS <input type="checkbox"/> SWSS	
			<input type="checkbox"/> VC <input type="checkbox"/> GS <input type="checkbox"/> GP <input type="checkbox"/> SS <input type="checkbox"/> MWS <input type="checkbox"/> SWSS	

* VC = Vegetation Clearing, GS = Gamma Scanning, GP = Geophysical Survey, SS = Soil Sampling, MWS = Monitor Well Sampling, SWSS = Surface Water and Sediment Sampling

MONITORING RESULTS

ID	Protected Resources Encountered	Area	AMM's Implemented	Residual Impacts
1	Braunton's milkvetch	SS-52	VC1, VC3	2 plants uprooted/damaged
1	Malibu baccharis	SS-52	VC1	1 plant heavily trimmed
1	Oaks, elderberries, walnuts	SS-52	Venture to trimming guidelines	Trimmed
1	Calif. gnatcatcher habitat	SS-52	GEN 8, XXXX	Habitat quality reduced. Trimmed outside of nesting season.

NOTES AND RECOMMENDATIONS:

VC continuing into SE corner of SS-52.

Biologist Signature: [Signature]
 HGL Field Supervisor Signature: [Signature]

Date: 11/22/10
 Date: 11/22/10

BIOLOGICAL RESOURCE MONITORING FORM

ACTIVITIES MONITORED

ID	Time	Area	Activities Monitored*	Equipment
1	800-1440	SS-52	<input checked="" type="checkbox"/> VC <input type="checkbox"/> GS <input type="checkbox"/> GP <input type="checkbox"/> SS <input type="checkbox"/> MWS <input type="checkbox"/> SWSS	Loppers, chainsaw, weed whackers, chippers
2	1300-1440	SS-49	<input checked="" type="checkbox"/> VC <input type="checkbox"/> GS <input type="checkbox"/> GP <input type="checkbox"/> SS <input type="checkbox"/> MWS <input type="checkbox"/> SWSS	chainsaw, weed whackers
			<input type="checkbox"/> VC <input type="checkbox"/> GS <input type="checkbox"/> GP <input type="checkbox"/> SS <input type="checkbox"/> MWS <input type="checkbox"/> SWSS	
			<input type="checkbox"/> VC <input type="checkbox"/> GS <input type="checkbox"/> GP <input type="checkbox"/> SS <input type="checkbox"/> MWS <input type="checkbox"/> SWSS	
			<input type="checkbox"/> VC <input type="checkbox"/> GS <input type="checkbox"/> GP <input type="checkbox"/> SS <input type="checkbox"/> MWS <input type="checkbox"/> SWSS	

per fruit loading trucks

* VC = Vegetation Clearing, GS = Gamma Scanning, GP = Geophysical Survey, SS = Soil Sampling, MWS = Monitor Well Sampling, SWSS = Surface Water and Sediment Sampling

MONITORING RESULTS

ID	Protected Resources Encountered	Area	AMM's Implemented	Residual Impacts
1	Brown-tail milkvetch	SS-52	VC1, VC2, VC3	1 plant cut
1	Oaks, elderberries, walnuts	SS-52	Vegetation Trimming guidelines	Trimmed. A select few cut under and elderberries and walnuts preserved
1,2	Malibu baccharis	SS-49, SS-52	VC1, VC2	All observed to be intact
1,2	Woodrat nests	SS-49, SS-52	VC1, VC2	Surrounding veg cut.
1,2	Calif. gnatcatcher habitat	SS-49, SS-52	GEN VC1	Habitat quality reduced. Trimmed outside of nesting season.

NOTES AND RECOMMENDATIONS:

LD1 finished trimming on SS-52 and moved on to SS-49.

Mower not used on scrub at SS-49 due to presence of woodrat nests Malibu baccharis. One big-eared woodrat (*Neotoma microtis*) seen leaving nest on SS-49. Protected for State-sensitive *Neotoma microtis* *lepidus* *intermedia*.

Biologist Signature: *Beeth*

HGL Field Supervisor Signature: *William R. ...*

Date: 11/23/10

Date: 11/23/10

Date: 11/24/10

Sheet 1 of 1

BIOLOGICAL RESOURCE MONITORING FORM

ACTIVITIES MONITORED

ID	Time	Area	Activities Monitored*	Equipment
1	800-1445	SS-49	<input checked="" type="checkbox"/> VC <input type="checkbox"/> GS <input type="checkbox"/> GP <input type="checkbox"/> SS <input type="checkbox"/> MWS <input type="checkbox"/> SWSS	longers chainsaws weed whackers, mower
2	800-1000	SS-52	<input checked="" type="checkbox"/> VC <input type="checkbox"/> GS <input type="checkbox"/> GP <input type="checkbox"/> SS <input type="checkbox"/> MWS <input type="checkbox"/> SWSS	chainsaw, mower
			<input type="checkbox"/> VC <input type="checkbox"/> GS <input type="checkbox"/> GP <input type="checkbox"/> SS <input type="checkbox"/> MWS <input type="checkbox"/> SWSS	
			<input type="checkbox"/> VC <input type="checkbox"/> GS <input type="checkbox"/> GP <input type="checkbox"/> SS <input type="checkbox"/> MWS <input type="checkbox"/> SWSS	
			<input type="checkbox"/> VC <input type="checkbox"/> GS <input type="checkbox"/> GP <input type="checkbox"/> SS <input type="checkbox"/> MWS <input type="checkbox"/> SWSS	

* VC = Vegetation Clearing, GS = Gamma Scanning, GP = Geophysical Survey, SS = Soil Sampling, MWS = Monitor Well Sampling, SWSS = Surface Water and Sediment Sampling

MONITORING RESULTS

ID	Protected Resources Encountered	Area	AMM's Implemented	Residual Impacts
1,2	Malibu baccharis	SS-49 SS-52	VC1	No plants impacted today.
1	Woodrat nests, potential for San Diego Desert Woodrat	SS-49	VC1	None (reduced surrounding cover)
2	Brownish mulevelvety	SS-52	VC1, VC2	None
1,2	Protected trees	SS-49, SS-52	Ventura Co. Trimming Contractors	Trimmed
1,2	Calif. gnatcatcher habitat	SS-49 SS-52	GENS	Habitat quality reduced. Trimming conducted outside of nesting season.

NOTES AND RECOMMENDATIONS:

DN finishing chains of SS-52 while getting started with hand-cutting of dense ~~leaved~~ chamise - White sage area on east side of SS-49.

Some Malibu baccharis and woodrat houses flagged in SS-49, (Mower used in SS-49 ~~is~~ in grassland area only.)

Biologist Signature: [Signature]

Date: 11/24/10

HGL Field Supervisor Signature: [Signature]

Date: 11/30/10

Date: 11/29/10

Sheet 1 of 1

BIOLOGICAL RESOURCE MONITORING FORM

ACTIVITIES MONITORED

ID	Time	Area	Activities Monitored*	Equipment
1	800-1430	SS-49	<input checked="" type="checkbox"/> VC <input type="checkbox"/> GS <input type="checkbox"/> GP <input type="checkbox"/> SS <input type="checkbox"/> MWS <input type="checkbox"/> SWSS	loppers, chain-saw, weed whackers
			<input type="checkbox"/> VC <input type="checkbox"/> GS <input type="checkbox"/> GP <input type="checkbox"/> SS <input type="checkbox"/> MWS <input type="checkbox"/> SWSS	
			<input type="checkbox"/> VC <input type="checkbox"/> GS <input type="checkbox"/> GP <input type="checkbox"/> SS <input type="checkbox"/> MWS <input type="checkbox"/> SWSS	
			<input type="checkbox"/> VC <input type="checkbox"/> GS <input type="checkbox"/> GP <input type="checkbox"/> SS <input type="checkbox"/> MWS <input type="checkbox"/> SWSS	
			<input type="checkbox"/> VC <input type="checkbox"/> GS <input type="checkbox"/> GP <input type="checkbox"/> SS <input type="checkbox"/> MWS <input type="checkbox"/> SWSS	

* VC = Vegetation Clearing, GS = Gamma Scanning, GP = Geophysical Survey, SS = Soil Sampling, MWS = Monitor Well Sampling, SWSS = Surface Water and Sediment Sampling

MONITORING RESULTS

ID	Protected Resources Encountered	Area	AMM's Implemented	Residual Impacts
1	Malibu baccharis	SS-49	VC1	None
1	Woodrat nests, potential for San Diego Desert Woodrat	SS-49	VC1	Reduced surrounding habitat quality.
1	Protected trees	SS-49	Ventura Co. Trimming Ordinance	Timmed
1	Calif. gnatcatcher habitat	SS-49	GENS	Habitat quality reduced. Trimming conducted outside of nesting season.

NOTES AND RECOMMENDATIONS:

Continued trimming on E side of SS-49. More baccharis and woodrat nests flagged.

Several *Psoralea cuneata*, *C. crassifolia*, *Arctostaphylos glauca* (Manzanita) flagged for preservation per request by Native American monitor (Patricia Tumamait).

Biologist Signature: [Signature]

HGL Field Supervisor Signature: [Signature]

Date: 11/29/10

Date: 11/30/10

Date: 11/30/10

Sheet 1 of 1

BIOLOGICAL RESOURCE MONITORING FORM

ACTIVITIES MONITORED

ID	Time	Area	Activities Monitored*	Equipment
1	800-200	SS-49	<input checked="" type="checkbox"/> VC <input type="checkbox"/> GS <input type="checkbox"/> GP <input type="checkbox"/> SS <input type="checkbox"/> MWS <input type="checkbox"/> SWSS	loppers, chainsaw, mower
			<input type="checkbox"/> VC <input type="checkbox"/> GS <input type="checkbox"/> GP <input type="checkbox"/> SS <input type="checkbox"/> MWS <input type="checkbox"/> SWSS	
			<input type="checkbox"/> VC <input type="checkbox"/> GS <input type="checkbox"/> GP <input type="checkbox"/> SS <input type="checkbox"/> MWS <input type="checkbox"/> SWSS	
			<input type="checkbox"/> VC <input type="checkbox"/> GS <input type="checkbox"/> GP <input type="checkbox"/> SS <input type="checkbox"/> MWS <input type="checkbox"/> SWSS	
			<input type="checkbox"/> VC <input type="checkbox"/> GS <input type="checkbox"/> GP <input type="checkbox"/> SS <input type="checkbox"/> MWS <input type="checkbox"/> SWSS	

* VC = Vegetation Clearing, GS = Gamma Scanning, GP = Geophysical Survey, SS = Soil Sampling, MWS = Monitor Well Sampling, SWSS = Surface Water and Sediment Sampling

MONITORING RESULTS

ID	Protected Resources Encountered	Area	AMM's Implemented	Residual Impacts
1	Malibu baccharis	SS-49	VC1	None
1	Woodrat nests/houses, potential San Diego Desert Woodrat	SS-49	VC1	Surrounding habitat quality reduced
1	Protected trees	SS-49	Ventura Co. Trimming Ordinance	Trimmed
1	Calif. gnatcatcher habitat	SS-49	GEN8	Habitat quality reduced, Trimming conducted outside of nesting season.

NOTES AND RECOMMENDATIONS:

LDI containing VC in SE SS-49. More baccharis and woodrat houses flagged.

Biologist Signature: [Signature]

Date: 11/30/10

HGL Field Supervisor Signature: [Signature]

Date: 12/1/10

Date: 12/1/10

Sheet 1 of 1

BIOLOGICAL RESOURCE MONITORING FORM

ACTIVITIES MONITORED

ID	Time	Area	Activities Monitored*	Equipment
1	800-1500	SS-49	<input checked="" type="checkbox"/> VC <input type="checkbox"/> GS <input type="checkbox"/> GP <input type="checkbox"/> SS <input type="checkbox"/> MWS <input type="checkbox"/> SWSS	loppers, chainsaw, mower
			<input type="checkbox"/> VC <input type="checkbox"/> GS <input type="checkbox"/> GP <input type="checkbox"/> SS <input type="checkbox"/> MWS <input type="checkbox"/> SWSS	
			<input type="checkbox"/> VC <input type="checkbox"/> GS <input type="checkbox"/> GP <input type="checkbox"/> SS <input type="checkbox"/> MWS <input type="checkbox"/> SWSS	
			<input type="checkbox"/> VC <input type="checkbox"/> GS <input type="checkbox"/> GP <input type="checkbox"/> SS <input type="checkbox"/> MWS <input type="checkbox"/> SWSS	
			<input type="checkbox"/> VC <input type="checkbox"/> GS <input type="checkbox"/> GP <input type="checkbox"/> SS <input type="checkbox"/> MWS <input type="checkbox"/> SWSS	

* VC = Vegetation Clearing, GS = Gamma Scanning, GP = Geophysical Survey, SS = Soil Sampling, MWS = Monitor Well Sampling, SWSS = Surface Water and Sediment Sampling

MONITORING RESULTS

ID	Protected Resources Encountered	Area	AMM's Implemented	Residual Impacts
1	Malibu buckcharis	SS-49	VCI	1 1 large plant damaged but still alive.
1	Woodrat houses, potential for San Diego Desert woodrat	SS-49	VCI	Reduced surrounding habitat quality. Houses intact.
1	Protected trees	SS-49	Ventura Co. Trimming Ordinance	Trimmed oaks.
1	Calif. gnatcatcher habitat	SS-49	GEN 8	Habitat quality reduced.

NOTES AND RECOMMENDATIONS:

Chipper being changed out today due to battery problems. Mower crushing brush piles.

3 woodrats seen around woodrat houses. ID'd as Neotoma macrotis - big-eared woodrat (non-sensitive).

Mower getting started on NE edge of SS-49 in purple sage scrub. 5+ woodrat houses flagged and avoided.

Biologist Signature: [Signature] Date: 12/1/10

HGL Field Supervisor Signature: [Signature] Date: 12/6/10

Date: 12/2/10

Sheet 1 of 1

BIOLOGICAL RESOURCE MONITORING FORM

ACTIVITIES MONITORED

ID	Time	Area	Activities Monitored*	Equipment
1	800-1440	SS-49	<input checked="" type="checkbox"/> VC <input type="checkbox"/> GS <input type="checkbox"/> GP <input type="checkbox"/> SS <input type="checkbox"/> MWS <input type="checkbox"/> SWSS	logging chain-saw, chipper, mower, front loader
2	1230-1400	SS-16,17	<input checked="" type="checkbox"/> VC <input type="checkbox"/> GS <input type="checkbox"/> GP <input type="checkbox"/> SS <input type="checkbox"/> MWS <input type="checkbox"/> SWSS	logging chain-saw
			<input type="checkbox"/> VC <input type="checkbox"/> GS <input type="checkbox"/> GP <input type="checkbox"/> SS <input type="checkbox"/> MWS <input type="checkbox"/> SWSS	
			<input type="checkbox"/> VC <input type="checkbox"/> GS <input type="checkbox"/> GP <input type="checkbox"/> SS <input type="checkbox"/> MWS <input type="checkbox"/> SWSS	
			<input type="checkbox"/> VC <input type="checkbox"/> GS <input type="checkbox"/> GP <input type="checkbox"/> SS <input type="checkbox"/> MWS <input type="checkbox"/> SWSS	

* VC = Vegetation Clearing, GS = Gamma Scanning, GP = Geophysical Survey, SS = Soil Sampling, MWS = Monitor Well Sampling, SWSS = Surface Water and Sediment Sampling

MONITORING RESULTS

ID	Protected Resources Encountered	Area	AMM's Implemented	Residual Impacts
1	Malibu baccharis	SS-49	VC1	None
1	Woodrat houses, potential for San Diego Desert Woodrat	SS-49	VC1	Reduced surrounding habitat quality. Houses intact.
1,2	Protected trees	SS-49 SS-16, SS-17	Ventura Co. Trimming Ordinance	Trimmed oaks.
1	Calif. junco habitat	SS-49	GEN8	Habitat quality reduced.

NOTES AND RECOMMENDATIONS:

Mower removing veg. in black/purple sage scrub all on N side. Woodrat nests and Malibu baccharis flagged and avoided.

Per request of Gamma scanning crew and geophysical crew 4 mature coast live oaks on SS-16, SS-17 (adjacent to G st.) were trimmed up to 5-6 feet above ground and in accordance w/ Ventura County Trimming Ordinance.

Additional unprotected shrubs (Ceanothus crassifolius, C. cuneatus, Arctostaphylos glauca) left standing by VC crew per request of Native American Monitor.

Biologist Signature: [Signature]

Date: 12/2/10

HGL Field Supervisor Signature: [Signature]

Date: 12/6/10

Date: 12/3/10

Sheet 1 of 1

BIOLOGICAL RESOURCE MONITORING FORM

ACTIVITIES MONITORED

ID	Time	Area	Activities Monitored*	Equipment
1	8:00-14:30	SS-49	<input checked="" type="checkbox"/> VC <input type="checkbox"/> GS <input type="checkbox"/> GP <input type="checkbox"/> SS <input type="checkbox"/> MWS <input type="checkbox"/> SWSS	loppers (chainsaw removed), front loader
			<input type="checkbox"/> VC <input type="checkbox"/> GS <input type="checkbox"/> GP <input type="checkbox"/> SS <input type="checkbox"/> MWS <input type="checkbox"/> SWSS	tractor, chainsaw
			<input type="checkbox"/> VC <input type="checkbox"/> GS <input type="checkbox"/> GP <input type="checkbox"/> SS <input type="checkbox"/> MWS <input type="checkbox"/> SWSS	" "
			<input type="checkbox"/> VC <input type="checkbox"/> GS <input type="checkbox"/> GP <input type="checkbox"/> SS <input type="checkbox"/> MWS <input type="checkbox"/> SWSS	
			<input type="checkbox"/> VC <input type="checkbox"/> GS <input type="checkbox"/> GP <input type="checkbox"/> SS <input type="checkbox"/> MWS <input type="checkbox"/> SWSS	

* VC = Vegetation Clearing, GS = Gamma Scanning, GP = Geophysical Survey, SS = Soil Sampling, MWS = Monitor Well Sampling, SWSS = Surface Water and Sediment Sampling

MONITORING RESULTS

ID	Protected Resources Encountered	Area	AMM's Implemented	Residual Impacts
1	Malibu baccharis	SS-49	VC1	2 plants lost, several trimmed
1	Woodrat nests/hooves, potential San Diego Desert Woodrat	SS-49	VC1	Reduced surrounding habitat quality
1	Protected trees	SS-49	Ventura Co. Trimming Ordinance	Some additional non-protected shrubs of small trees saved per Ventura Co. ordinance request
1	Calif. gnatcatcher habitat	SS-49	GENB	Habitat quality reduced. Trimming conducted outside of nesting season.

NOTES AND RECOMMENDATIONS:

mostly
 Mower wrapped up trimmings of black/purple sage scrub on northern edge of SS-49. No further mowing of site recommended due to Baccharis malibuensis. (Crushing of previously cut brush piles etc).
 Hand trimmers have nearly reached summit and are progressing quickly compared to SS-51, SS-58. Additional Malibu Baccharis identified and avoided by trimmers.
 * Lostake's Sycamores milkvetch in SS-10 and SS-7. 1 Milkvetch in SS-10 has been damaged but still standing. Date of the damage and cause unknown. The milkvetch in SS-7 ~~does not have any leaves and may be dead.~~

Biologist Signature: [Signature]

Date: 12/3/10

HGL Field Supervisor Signature: [Signature]

Date: 12/3/10

Date: 12/6/10

Sheet 1 of 1

BIOLOGICAL RESOURCE MONITORING FORM

ACTIVITIES MONITORED

ID	Time	Area	Activities Monitored*	Equipment
1	800-1345	SS-49	<input checked="" type="checkbox"/> VC <input type="checkbox"/> GS <input type="checkbox"/> GP <input type="checkbox"/> SS <input type="checkbox"/> MWS <input type="checkbox"/> SWSS	loggers, chainsaw, skidder w/ mower
2	1300-1320	SS-7	<input type="checkbox"/> VC <input type="checkbox"/> GS <input type="checkbox"/> GP <input checked="" type="checkbox"/> SS <input type="checkbox"/> MWS <input type="checkbox"/> SWSS	power auger
			<input type="checkbox"/> VC <input type="checkbox"/> GS <input type="checkbox"/> GP <input type="checkbox"/> SS <input type="checkbox"/> MWS <input type="checkbox"/> SWSS	
			<input type="checkbox"/> VC <input type="checkbox"/> GS <input type="checkbox"/> GP <input type="checkbox"/> SS <input type="checkbox"/> MWS <input type="checkbox"/> SWSS	
			<input type="checkbox"/> VC <input type="checkbox"/> GS <input type="checkbox"/> GP <input type="checkbox"/> SS <input type="checkbox"/> MWS <input type="checkbox"/> SWSS	

le,
per,
from
loader

* VC = Vegetation Clearing, GS = Gamma Scanning, GP = Geophysical Survey, SS = Soil Sampling, MWS = Monitor Well Sampling, SWSS = Surface Water and Sediment Sampling

MONITORING RESULTS

ID	Protected Resources Encountered	Area	AMM's Implemented	Residual Impacts
1	Malibu baccharis	SS-49	VC1	~10 plants trimmed
1	Woodrat houses, potential for San Diego Desert Woodrat	SS-49	VC1	Reduced surrounding habitat quality
1	Protected trees	SS-49	Ventura County Trimming Ordinance	Coast live oaks trimmed.
1	Calif. gnatcatcher habitat	SS-49	GEN8	Habitat quality reduced. Trimming conducted outside of nesting season.
2	Vernal pool	SS-7	SS1	None - reflagged (see below)*

NOTES AND RECOMMENDATIONS:

VC crew ~~was~~ doing excellent job of avoiding Baccharis malibuensis and woodrat houses. Baccharis is quite dense on plot and so some damage to plants is acceptable.

* Vernal pool at SS-7 has tire tracks on northern portion. HGL has stayed out of area w/ vehicles so it may be Pinkerton Security or other Bobcats contractor. HGL should continue to keep out of area and advise others to do the same. Some stakes had fallen over, so Environ biologist will monitor more frequently, and keep flagging up.

Biologist Signature: [Signature]
 HGL Field Supervisor Signature: [Signature]

Date: 12/6/10
 Date: 12/9/10

Date: 12/7/10

Sheet 1 of 1

BIOLOGICAL RESOURCE MONITORING FORM

ACTIVITIES MONITORED

ID	Time	Area	Activities Monitored*	Equipment
1	800-1400	SS-49	<input checked="" type="checkbox"/> VC <input type="checkbox"/> GS <input type="checkbox"/> GP <input type="checkbox"/> SS <input type="checkbox"/> MWS <input type="checkbox"/> SWSS	loppers, chainsaw, skidster w/ chipper
			<input type="checkbox"/> VC <input type="checkbox"/> GS <input type="checkbox"/> GP <input type="checkbox"/> SS <input type="checkbox"/> MWS <input type="checkbox"/> SWSS	
			<input type="checkbox"/> VC <input type="checkbox"/> GS <input type="checkbox"/> GP <input type="checkbox"/> SS <input type="checkbox"/> MWS <input type="checkbox"/> SWSS	
			<input type="checkbox"/> VC <input type="checkbox"/> GS <input type="checkbox"/> GP <input type="checkbox"/> SS <input type="checkbox"/> MWS <input type="checkbox"/> SWSS	
			<input type="checkbox"/> VC <input type="checkbox"/> GS <input type="checkbox"/> GP <input type="checkbox"/> SS <input type="checkbox"/> MWS <input type="checkbox"/> SWSS	

* VC = Vegetation Clearing, GS = Gamma Scanning, GP = Geophysical Survey, SS = Soil Sampling, MWS = Monitor Well Sampling, SWSS = Surface Water and Sediment Sampling

MONITORING RESULTS

ID	Protected Resources Encountered	Area	AMM's Implemented	Residual Impacts
1	Malibu baccharis	SS-49	VC1	~5 plants trimmed.
1	Woodrat houses potential for San Diego Woodrat	SS-49	VC1	Reduced surrounding habitat quality
1	Protected trees	SS-49	Ventura County Trimming Ordinance	Coast live oaks trimmed.
1	Calif. gnatcatcher habitat	SS-49	GENS	Habit quality reduced Trimming conducted outside of nesting season.

NOTES AND RECOMMENDATIONS:

Two big-eared woodrats seen near woodrat houses (*Dipodomys macrotis*)

1410-1440 Conducted Environmental Education Program training for COM employees.

Biologist Signature: [Signature]

Date: 12/7/10

HGL Field Supervisor Signature: [Signature]

Date: 12/10/10

Date: 12/8/10

Sheet 1 of 1

BIOLOGICAL RESOURCE MONITORING FORM

ACTIVITIES MONITORED

ID	Time	Area	Activities Monitored*	Equipment
1	8:15-9:15	SS-20	<input checked="" type="checkbox"/> VC <input type="checkbox"/> GS <input type="checkbox"/> GP <input type="checkbox"/> SS <input type="checkbox"/> MWS <input type="checkbox"/> SWSS	loppers chainsaw
2	9:15-14:30	SS-49	<input checked="" type="checkbox"/> VC <input type="checkbox"/> GS <input type="checkbox"/> GP <input type="checkbox"/> SS <input type="checkbox"/> MWS <input type="checkbox"/> SWSS <input type="checkbox"/> VC <input type="checkbox"/> GS <input type="checkbox"/> GP <input type="checkbox"/> SS <input type="checkbox"/> MWS <input type="checkbox"/> SWSS <input type="checkbox"/> VC <input type="checkbox"/> GS <input type="checkbox"/> GP <input type="checkbox"/> SS <input type="checkbox"/> MWS <input type="checkbox"/> SWSS <input type="checkbox"/> VC <input type="checkbox"/> GS <input type="checkbox"/> GP <input type="checkbox"/> SS <input type="checkbox"/> MWS <input type="checkbox"/> SWSS	loppers chainsaws, ch. power, skid steer w/ mower.

* VC = Vegetation Clearing, GS = Gamma Scanning, GP = Geophysical Survey, SS = Soil Sampling, MWS = Monitor Well Sampling, SWSS = Surface Water and Sediment Sampling

MONITORING RESULTS

ID	Protected Resources Encountered	Area	AMM's Implemented	Residual Impacts
1/2	Protected trees	SS-20 SS-49	Ventura County Trimming Ordinance	Coast live oaks trimmed.
2	Malibu baccharis	SS-49	VC	~1/5 plants trimmed.
2	Woodrat houses (San Diego Desert woodrat hab.)	SS-49	VC	Surrounding habitat quality reduced
2	Calif. gnatcatcher habitat	SS-49	GENS	Habitat quality reduced. Trimming done out of the nesting season.
2	Coast horned lizard Calochortus sp.	SS-49	Relocated Flagged mapped	Relocated Outside of blooming season trimming OK.

NOTES AND RECOMMENDATIONS:

Mower being used to break down ~~brush~~ pre-cut brush piles - not used for live vegetation due to presence of Malibu baccharis and coast horned lizard.

Coast horned lizard adult ~~was~~ found at UTM 341579E 3788709N. It was relocated beyond SSFL fence on same hill in similar habitat.

3 Calochortus inflorescens from previous spring found at 341599E, 3788709E (also seen during SS-49 bio clearance survey but not GPS'd.) No restrictions currently needed because this ~~perennial~~ perennial bulb blooms during Spring/summer. Its potential Plummer's mariposa lily (state protected) preserved.

Some larger hairy ceanothus (Ceanothus oliganthus). Very immature, tree-like shrubs should be able to be avoided during scanning.

Biologist Signature: [Signature]

Date: 12/8/10

HGL Field Supervisor Signature: [Signature]

Date: 12/10/10

Date: 12/9/10

Sheet 1 of 1

BIOLOGICAL RESOURCE MONITORING FORM

ACTIVITIES MONITORED

ID	Time	Area	Activities Monitored*	Equipment
1	8:00-14:20	SS-49	<input checked="" type="checkbox"/> VC <input type="checkbox"/> GS <input type="checkbox"/> GP <input type="checkbox"/> SS <input type="checkbox"/> MWS <input type="checkbox"/> SWSS	Loaders, chainsaws, chippers
			<input type="checkbox"/> VC <input type="checkbox"/> GS <input type="checkbox"/> GP <input type="checkbox"/> SS <input type="checkbox"/> MWS <input type="checkbox"/> SWSS	*Skid steer w/ mower
			<input type="checkbox"/> VC <input type="checkbox"/> GS <input type="checkbox"/> GP <input type="checkbox"/> SS <input type="checkbox"/> MWS <input type="checkbox"/> SWSS	
			<input type="checkbox"/> VC <input type="checkbox"/> GS <input type="checkbox"/> GP <input type="checkbox"/> SS <input type="checkbox"/> MWS <input type="checkbox"/> SWSS	
			<input type="checkbox"/> VC <input type="checkbox"/> GS <input type="checkbox"/> GP <input type="checkbox"/> SS <input type="checkbox"/> MWS <input type="checkbox"/> SWSS	

* VC = Vegetation Clearing, GS = Gamma Scanning, GP = Geophysical Survey, SS = Soil Sampling, MWS = Monitor Well Sampling, SWSS = Surface Water and Sediment Sampling

MONITORING RESULTS

ID	Protected Resources Encountered	Area	AMM's Implemented	Residual Impacts
1	Malibu baccharis	SS-49	VC1, no mowing of live veg.	5-10 plants trimmed
1	Woodrat houses (San Diego Desert woodrat potential)	SS-49	VC1	Surrounding habitat quality reduced.
1	Protected trees.	SS-49	Ventura County Tree Trimming Ordinance	Coast live oaks, all walnuts trimmed
1	Calif. snailcatcher habitat	SS-49	GENS	Habitat quality reduced, trimming done outside of nesting season.
1	Occupied coast horned lizard habitat.	SS-49	VC1, no mowing of live veg.	Habitat quality reduced.

NOTES AND RECOMMENDATIONS:

Mowing only permitted for crushing pre-cut vegetation piles due to confirmed presence of Malibu baccharis and coast horned lizard.

Malibu baccharis is abundant on N, NE slope of SS-49. Minor trimming of some individuals not likely to affect population's viability.

* Straw wattles may well be needed for some steep areas on N side of SS-49 with no ground cover. Very loose soils common in this area. (Erosion control).

Biologist Signature: [Signature]

Date: 12/9/10

HGL Field Supervisor Signature: [Signature]

Date: 12/10/10
LLG

Date: 12/10/10

Sheet 1 of 1

BIOLOGICAL RESOURCE MONITORING FORM

ACTIVITIES MONITORED

ID	Time	Area	Activities Monitored*	Equipment
1	800-1415	SS-49	<input checked="" type="checkbox"/> VC <input type="checkbox"/> GS <input type="checkbox"/> GP <input type="checkbox"/> SS <input type="checkbox"/> MWS <input type="checkbox"/> SWSS	longers weed whacker, chainsaw, chipper, mulcher
2	1115-1120	SS-10	<input type="checkbox"/> VC <input type="checkbox"/> GS <input type="checkbox"/> GP <input checked="" type="checkbox"/> SS <input type="checkbox"/> MWS <input type="checkbox"/> SWSS	Foot traffic, auger
2	1105-1110	SS-6/7	<input type="checkbox"/> VC <input type="checkbox"/> GS <input type="checkbox"/> GP <input checked="" type="checkbox"/> SS <input type="checkbox"/> MWS <input type="checkbox"/> SWSS	Foot traffic, auger
			<input type="checkbox"/> VC <input type="checkbox"/> GS <input type="checkbox"/> GP <input type="checkbox"/> SS <input type="checkbox"/> MWS <input type="checkbox"/> SWSS	
			<input type="checkbox"/> VC <input type="checkbox"/> GS <input type="checkbox"/> GP <input type="checkbox"/> SS <input type="checkbox"/> MWS <input type="checkbox"/> SWSS	

* VC = Vegetation Clearing, GS = Gamma Scanning, GP = Geophysical Survey, SS = Soil Sampling, MWS = Monitor Well Sampling, SWSS = Surface Water and Sediment Sampling

MONITORING RESULTS

ID	Protected Resources Encountered	Area	AMM's Implemented	Residual Impacts
1	Malibu baccharis	SS-49	VC1	2 plants inadvertently trimmed.
1	Protected trees	SS-49	Ventura County Trimming Ordinance	Oaks, elderberries trimmed (+walnuts)
1	Woodrat burrows (potential San Diego desert woodrat)	SS-49	VC1	Habitat quality reduced, houses intact
1	Calif. gnatcatcher, habitat	SS-49	GENS	Habitat quality reduced, trimming done outside of nesting bird season
2	Brownish milleduck, vernal pool	SS-10 SS-6/7	SS1, SS2	None

NOTES AND RECOMMENDATIONS:

SS-49 Mature chamise chaparral has no understory and hillside will be composed of exposed loose soil after trimming. Use of straw wattles to control erosion is recommended but not required, since mud flows if any, are not likely to enter jurisdictional waterways. However, ~~straw~~ contact activities may become difficult ~~if~~ if large cuts or gullies develop in hillside. Sensitive resources such as Malibu baccharis and mature oak trees may be negatively affected. Rain expected late ~~the~~ next week. (Dec 18)

Biologist Signature: [Signature]

Date: 12/13/10

HGL Field Supervisor Signature: [Signature]

Date: 12/13/10

Date: 12/13/10

Sheet 1 of 1

BIOLOGICAL RESOURCE MONITORING FORM

ACTIVITIES MONITORED

ID	Time	Area	Activities Monitored*	Equipment
1	800-1100	NBZ	<input type="checkbox"/> VC <input type="checkbox"/> GS <input type="checkbox"/> GP <input type="checkbox"/> SS <input type="checkbox"/> MWS <input checked="" type="checkbox"/> SWSS	Foot traffic trowel
2	1100-1400	SS-49	<input checked="" type="checkbox"/> VC <input type="checkbox"/> GS <input type="checkbox"/> GP <input type="checkbox"/> SS <input type="checkbox"/> MWS <input type="checkbox"/> SWSS	loggers chainsaw, mower
3	1400-1600	NBZ	<input type="checkbox"/> VC <input type="checkbox"/> GS <input type="checkbox"/> GP <input type="checkbox"/> SS <input type="checkbox"/> MWS <input checked="" type="checkbox"/> SWSS	Foot traffic trowel
			<input type="checkbox"/> VC <input type="checkbox"/> GS <input type="checkbox"/> GP <input type="checkbox"/> SS <input type="checkbox"/> MWS <input type="checkbox"/> SWSS	
			<input type="checkbox"/> VC <input type="checkbox"/> GS <input type="checkbox"/> GP <input type="checkbox"/> SS <input type="checkbox"/> MWS <input type="checkbox"/> SWSS	

* VC = Vegetation Clearing, GS = Gamma Scanning, GP = Geophysical Survey, SS = Soil Sampling, MWS = Monitor Well Sampling, SWSS = Surface Water and Sediment Sampling

MONITORING RESULTS

ID	Protected Resources Encountered	Area	AMM's Implemented	Residual Impacts
1/3	Calif red-legged frog habitat	NBZ EPASED40 EPASED21	GEN1, SWSS-1 EPASED32, EPASED33	None
2	Calif gnatcatcher habitat	SS-49	GEN8	Habitat quality reduced. Trimming clear cuts, less of nesting season
2	Malibu baccharis	SS-49	VC1	No plants impacted today.
2	Wooded houses (potential for San Diego Desert Wood)	SS-49	VC1	Habitat quality reduced. Houses intact
2	Prescribed trees	SS-49	Natura County Trimming Ordinance	Trimmed.

NOTES AND RECOMMENDATIONS:

• VC: Straw wattles recommended on SS-49 for erosion control with coming rainy season. In addition uprooting of small or brittle shrubs should be minimized as much as reasonably possible. This will help minimize erosion, and per the vegetation protocol (SMP Appendix E, Pg E-2) "root systems of perennial and woody plant species will not be disturbed."

• SWSS Sampling team's impact is minimal enough to not require monitoring during entire survey. However monitoring of points near Golden Eagle nest and in California red-legged frog habitat will be generally necessary. Encom has not conducted general biological surveys within NBZ and therefore will still need to coordinate closely with SWSS crew.

Biologist Signature: [Signature]

Date: 12/13/10

HGL Field Supervisor Signature: [Signature]

Date: 12/13/10

Date: 12/14/10

Sheet 1 of 1

BIOLOGICAL RESOURCE MONITORING FORM

ACTIVITIES MONITORED

ID	Time	Area	Activities Monitored*	Equipment
1	800-1420	SS-49,	<input checked="" type="checkbox"/> VC <input type="checkbox"/> GS <input type="checkbox"/> GP <input type="checkbox"/> SS <input type="checkbox"/> MWS <input type="checkbox"/> SWSS	chainsaw, mower
		SS-48	<input type="checkbox"/> VC <input type="checkbox"/> GS <input type="checkbox"/> GP <input type="checkbox"/> SS <input type="checkbox"/> MWS <input type="checkbox"/> SWSS	
			<input type="checkbox"/> VC <input type="checkbox"/> GS <input type="checkbox"/> GP <input type="checkbox"/> SS <input type="checkbox"/> MWS <input type="checkbox"/> SWSS	
			<input type="checkbox"/> VC <input type="checkbox"/> GS <input type="checkbox"/> GP <input type="checkbox"/> SS <input type="checkbox"/> MWS <input type="checkbox"/> SWSS	
			<input type="checkbox"/> VC <input type="checkbox"/> GS <input type="checkbox"/> GP <input type="checkbox"/> SS <input type="checkbox"/> MWS <input type="checkbox"/> SWSS	

* VC = Vegetation Clearing, GS = Gamma Scanning, GP = Geophysical Survey, SS = Soil Sampling, MWS = Monitor Well Sampling, SWSS = Surface Water and Sediment Sampling

MONITORING RESULTS

ID	Protected Resources Encountered	Area	AMM's Implemented	Residual Impacts
1	Calif gnatcatcher habitat	SS-48, SS-49	GEN8	Habitat quality reduced. Trimming done outside of nesting season.
1	Malibu baccharis	SS-49	VCI	10-15 plants trimmed or bent but still intact.
1	Wood, warehouses (potential for San Diego desert woodrats)	SS-49	VCI	None
1	Protected trees	SS-49	Ventura County Trimming Guidelines	Some smaller oaks ^{cut} trimmed.

NOTES AND RECOMMENDATIONS:

- Some Malibu baccharis plants impacted. However, population is very dense on N slope of SS-49 and this species is codominant with chamise (in understory).
- Some manzanita (*Arctostaphylos glauca*) and hairy ceanothus (*Ceanothus oliganthus*) spared at request of Native American monitor and from recommendation of biological clearance survey report due to old-growth conditions.
- Continued monitoring of hillside's erosion potential with upcoming rains recommended. Mulching on hillside or straw wattles recommended.

Biologist Signature: *Scott*
 HGL Field Supervisor Signature: *Juan Roldan Maldonado*

Date: 12/14/10
 Date: 12/14/10

BIOLOGICAL RESOURCE MONITORING FORM

ACTIVITIES MONITORED

ID	Time	Area	Activities Monitored*	Equipment
1	745-1145	NBZ, SS-38	<input checked="" type="checkbox"/> VC <input type="checkbox"/> GS <input type="checkbox"/> GP <input type="checkbox"/> SS <input type="checkbox"/> MWS <input checked="" type="checkbox"/> SWSS	hand tools (trawl)
1	1410-1425	SS-38	<input type="checkbox"/> VC <input type="checkbox"/> GS <input type="checkbox"/> GP <input type="checkbox"/> SS <input type="checkbox"/> MWS <input checked="" type="checkbox"/> SWSS	hand tools (trawl)
2	1150-1400	SS-49, SS-40	<input checked="" type="checkbox"/> VC <input type="checkbox"/> GS <input type="checkbox"/> GP <input type="checkbox"/> SS <input type="checkbox"/> MWS <input type="checkbox"/> SWSS	chainsaw mower
			<input type="checkbox"/> VC <input type="checkbox"/> GS <input type="checkbox"/> GP <input type="checkbox"/> SS <input type="checkbox"/> MWS <input type="checkbox"/> SWSS	
			<input type="checkbox"/> VC <input type="checkbox"/> GS <input type="checkbox"/> GP <input type="checkbox"/> SS <input type="checkbox"/> MWS <input type="checkbox"/> SWSS	

* VC = Vegetation Clearing, GS = Gamma Scanning, GP = Geophysical Survey, SS = Soil Sampling, MWS = Monitor Well Sampling, SWSS = Surface Water and Sediment Sampling

MONITORING RESULTS

ID	Protected Resources Encountered	Area	AMM's Implemented	Residual Impacts
1	Golden Eagle nest	NBZ	SWSS-1	None
	California red-legged frog habitat	SS-38	GEN-11, SWSS-1	None
1	Santa Susana tarplant	NBZ, SS-38	SWSS-1	None
2	Woodrat houses (potential San Diego desert woodrat)	SS-49	VC1	None
2	Malibu baccharis	SS-49	VC1	~5 individuals trimmed/trampled.
2	calif. gnatcatcher habitat	SS-49	GEN-8	Reduced habitat quality. Trimmed outside of nesting season.

2 Protected trees SS-49 Ventura County Trimming Ordinance None (oaks trimmed)

NOTES AND RECOMMENDATIONS:

ID#1: Sediment Sampling points monitored: EPASED21 (NBZ), EPASED19 (SS-38), EPASED16 (SS-38).

- Golden Eagle nest not currently active. Nest refurbishment may begin in late fall to winter with egg-laying in Jan/Feb. No golden eagles seen near nest, though local pair has been seen over NBZ several times in recent months.
- No water at outfall 3 (EPASED 16, 19). No CRLF but Pacific chorus frogs (*Pseudacris regilla*) are calling (non-sensitive).

Biologist Signature: [Signature] Date: 12/15/10

HGL Field Supervisor Signature: [Signature] Date: 12/15/10

Date: 12/16/10

Sheet 1 of 1

BIOLOGICAL RESOURCE MONITORING FORM

ACTIVITIES MONITORED

ID	Time	Area	Activities Monitored*	Equipment
1	800-830	SS-49	<input checked="" type="checkbox"/> VC <input type="checkbox"/> GS <input type="checkbox"/> GP <input type="checkbox"/> SS <input type="checkbox"/> MWS <input type="checkbox"/> SWSS	chainsaws, chopper
2	840-1015	SS-38	<input type="checkbox"/> VC <input type="checkbox"/> GS <input type="checkbox"/> GP <input type="checkbox"/> SS <input type="checkbox"/> MWS <input checked="" type="checkbox"/> SWSS	trowel foot traffic
1	1015-1345	SS-49	<input checked="" type="checkbox"/> VC <input type="checkbox"/> GS <input type="checkbox"/> GP <input type="checkbox"/> SS <input type="checkbox"/> MWS <input type="checkbox"/> SWSS	chainsaws, chopper
3	1350-1405	SS-38 NBZ	<input type="checkbox"/> VC <input type="checkbox"/> GS <input type="checkbox"/> GP <input type="checkbox"/> SS <input type="checkbox"/> MWS <input checked="" type="checkbox"/> SWSS	trowel foot traffic
			<input type="checkbox"/> VC <input type="checkbox"/> GS <input type="checkbox"/> GP <input type="checkbox"/> SS <input type="checkbox"/> MWS <input type="checkbox"/> SWSS	

* VC = Vegetation Clearing, GS = Gamma Scanning, GP = Geophysical Survey, SS = Soil Sampling, MWS = Monitor Well Sampling, SWSS = Surface Water and Sediment Sampling

MONITORING RESULTS

ID	Protected Resources Encountered	Area	AMM's Implemented	Residual Impacts
1	Malibu hickories, wood at houses	SS-49	VC 1	None
1	Calif. grackle habitat Pruned trees	SS-49	VC GENS NV Ventura County Guidelines	Habitat quality reduced Trimmed
2	Calif. red-legged frog habitat	SS-38	EPASED19 SWSS-1	None
3	None - surveyed for riparian and CRLF hab.	NBZ EPASED13	SWSS-1	None

NOTES AND RECOMMENDATIONS:

ID1 done with veg clearing today on SS-49. (Still need to check though).

ID#2: SWSS team redoing survey point: EPASED19 in freshwater marsh below Outfall 4. No surface or sub-surface water present.

ID#3: No ~~water~~ souled water at EPASED13 or at Outfall 4, although some very slight trickling water in weir. No riparian vegetation present at EPASED13, just a ditch in the Coast Live oak woodland.

Biologist Signature: [Signature]

HGL Field Supervisor Signature: [Signature]

Date: 12/16/10

Date: 12/16/10

Date: 12/17/10

Sheet 1 of 1

BIOLOGICAL RESOURCE MONITORING FORM

ACTIVITIES MONITORED

ID	Time	Area	Activities Monitored*	Equipment
1	800-1100	SS-49	<input checked="" type="checkbox"/> VC <input type="checkbox"/> GS <input type="checkbox"/> GP <input type="checkbox"/> SS <input type="checkbox"/> MWS <input type="checkbox"/> SWSS	Chipper
			<input type="checkbox"/> VC <input type="checkbox"/> GS <input type="checkbox"/> GP <input type="checkbox"/> SS <input type="checkbox"/> MWS <input type="checkbox"/> SWSS	
			<input type="checkbox"/> VC <input type="checkbox"/> GS <input type="checkbox"/> GP <input type="checkbox"/> SS <input type="checkbox"/> MWS <input type="checkbox"/> SWSS	
			<input type="checkbox"/> VC <input type="checkbox"/> GS <input type="checkbox"/> GP <input type="checkbox"/> SS <input type="checkbox"/> MWS <input type="checkbox"/> SWSS	

* VC = Vegetation Clearing, GS = Gamma Scanning, GP = Geophysical Survey, SS = Soil Sampling, MWS = Monitor Well Sampling, SWSS = Surface Water and Sediment Sampling

MONITORING RESULTS

ID	Protected Resources Encountered	Area	AMM's Implemented	Residual Impacts
1	Malibu buckhorns	SS-49	VC	No plants impacted today.
1	Woodrat houses - San Diego side scrub woodrat potential	SS-49	VC	Surrounding habitat quality reduced. Houses intact
1	California gnatcatcher habitat	SS-49	GENS	Habitat quality reduced. Trimmed outside of nesting season.
1	Protected trees	SS-49	Ventura County Trimming Guidelines	Coast live oaks, walnuts, elderberries trimmed.

NOTES AND RECOMMENDATIONS:

LDI being half-day on this Friday. LDI off next week and then New Year's. SS-49 veg has all been cut but still requires chipping. Piled brush on ~~the~~ steep hillside will need to be transported by hand to chipper; some can be crushed w/ mower. Light but windy rain today, not saturating soil or puddling on SS-49, but continued rain expected into next week.

~~Base trail~~
I was called to Outfall 3 and EPA SED14 to investigate suspected mountain lion prints - requested by safety coordinator. None found. Suspected print was mish-mash of mule deer tracks, other mule deer tracks nearby. Coyote scat present nearby as well (fresh).

I also briefly inspected area around outfalls 5 and 6, where today's SWSS points are located. No California red-legged frogs or other potentially impacted sensitive resources located.

Biologist Signature: [Signature] Date: 12/17/10

HGL Field Supervisor Signature: [Signature] Date: 12/17/10

Date: 1/4/11

Sheet 1 of 1

BIOLOGICAL RESOURCE MONITORING FORM

ACTIVITIES MONITORED

ID	Time	Area	Activities Monitored*	Equipment
1	800-1415	SS-49	<input checked="" type="checkbox"/> VC <input type="checkbox"/> GS <input type="checkbox"/> GP <input type="checkbox"/> SS <input type="checkbox"/> MWS <input type="checkbox"/> SWSS	Chopper, fuel tanks, brush, rolling
			<input type="checkbox"/> VC <input type="checkbox"/> GS <input type="checkbox"/> GP <input type="checkbox"/> SS <input type="checkbox"/> MWS <input type="checkbox"/> SWSS	
			<input type="checkbox"/> VC <input type="checkbox"/> GS <input type="checkbox"/> GP <input type="checkbox"/> SS <input type="checkbox"/> MWS <input type="checkbox"/> SWSS	
			<input type="checkbox"/> VC <input type="checkbox"/> GS <input type="checkbox"/> GP <input type="checkbox"/> SS <input type="checkbox"/> MWS <input type="checkbox"/> SWSS	
			<input type="checkbox"/> VC <input type="checkbox"/> GS <input type="checkbox"/> GP <input type="checkbox"/> SS <input type="checkbox"/> MWS <input type="checkbox"/> SWSS	

* VC = Vegetation Clearing, GS = Gamma Scanning, GP = Geophysical Survey, SS = Soil Sampling, MWS = Monitor Well Sampling, SWSS = Surface Water and Sediment Sampling

MONITORING RESULTS

ID	Protected Resources Encountered	Area	AMM's Implemented	Residual Impacts
1	Malibu baccharis	SS-49	VC1, VC2	less than 10 plants impacted, still rooted and should recover
1	Woodrat burrows (potential for San Diego desert woodrat)	SS-49	VC1	Surrounding habitat quality reduced

NOTES AND RECOMMENDATIONS:

Biologist (Scott Werner) mainly occupied with nearby clearance surveys, but was able to periodically check in on VC activity.

Biologist Signature: Scott Werner

Date: 1/4/11

HGL Field Supervisor Signature: [Signature]

Date: 1/4/11

BIOLOGICAL RESOURCE MONITORING FORM

ACTIVITIES MONITORED

ID	Time	Area	Activities Monitored*	Equipment
1	800-1430	SS-49	<input checked="" type="checkbox"/> VC <input type="checkbox"/> GS <input type="checkbox"/> GP <input type="checkbox"/> SS <input type="checkbox"/> MWS <input type="checkbox"/> SWSS	Chippers
2	800-1430	SS-48	<input checked="" type="checkbox"/> VC <input type="checkbox"/> GS <input type="checkbox"/> GP <input type="checkbox"/> SS <input type="checkbox"/> MWS <input type="checkbox"/> SWSS	Front loader, loppers
3	1030-1050	SS-7	<input type="checkbox"/> VC <input type="checkbox"/> GS <input type="checkbox"/> GP <input type="checkbox"/> SS <input type="checkbox"/> MWS <input type="checkbox"/> SWSS	n/a - see below
			<input type="checkbox"/> VC <input type="checkbox"/> GS <input type="checkbox"/> GP <input type="checkbox"/> SS <input type="checkbox"/> MWS <input type="checkbox"/> SWSS	
			<input type="checkbox"/> VC <input type="checkbox"/> GS <input type="checkbox"/> GP <input type="checkbox"/> SS <input type="checkbox"/> MWS <input type="checkbox"/> SWSS	

* VC = Vegetation Clearing, GS = Gamma Scanning, GP = Geophysical Survey, SS = Soil Sampling, MWS = Monitor Well Sampling, SWSS = Surface Water and Sediment Sampling

MONITORING RESULTS

ID	Protected Resources Encountered	Area	AMM's Implemented	Residual Impacts
1,2	Protected trees	SS-48 SS-49	Venture Co. Trimming ^{Contractors}	No trees trimmed today.
2	Malibu buckbars	SS-49	VC1	No impacts
1,2	Woodrat houses (San Diego Descri. Woodrat potential)	SS-48 SS-49	VC1	Some houses affected by brush removal and chipping - no rats obs.
3	Unidentified fairy shrimp seen in vernal pool			

NOTES AND RECOMMENDATIONS:

SS-49 cutting is done but brush piles are being rolled downhill to road for chipping.

SS-48: Poison oak removal crew using loppers and tractor for offsite removal.

SS-7: Confirmed unidentified fairy shrimp in vernal pool. Area was restaked yesterday. Continue to avoid vernal pool as has been done. SMP assumes vernal pool is occupied habitat without a protocol survey, so no management changes required.

Biologist Signature: [Signature]

Date: 1/5/11

HGL Field Supervisor Signature: [Signature]

Date: 1/5/11

Date: 1/6/10

Sheet 1 of 1

BIOLOGICAL RESOURCE MONITORING FORM

ACTIVITIES MONITORED

ID	Time	Area	Activities Monitored*	Equipment
1	8:00-8:55	SS6/7	<input type="checkbox"/> VC <input type="checkbox"/> GS <input type="checkbox"/> GP <input type="checkbox"/> SS <input type="checkbox"/> MWS <input type="checkbox"/> SWSS	WLA
2	8:55-10:30	SS-46	<input checked="" type="checkbox"/> VC <input type="checkbox"/> GS <input type="checkbox"/> GP <input type="checkbox"/> SS <input type="checkbox"/> MWS <input type="checkbox"/> SWSS	Choppy
2	13:00-14:30	SS-46	<input checked="" type="checkbox"/> VC <input type="checkbox"/> GS <input type="checkbox"/> GP <input type="checkbox"/> SS <input type="checkbox"/> MWS <input type="checkbox"/> SWSS	wood mitered, chainsaw
			<input type="checkbox"/> VC <input type="checkbox"/> GS <input type="checkbox"/> GP <input type="checkbox"/> SS <input type="checkbox"/> MWS <input type="checkbox"/> SWSS	
			<input type="checkbox"/> VC <input type="checkbox"/> GS <input type="checkbox"/> GP <input type="checkbox"/> SS <input type="checkbox"/> MWS <input type="checkbox"/> SWSS	

* VC = Vegetation Clearing, GS = Gamma Scanning, GP = Geophysical Survey, SS = Soil Sampling, MWS = Monitor Well Sampling, SWSS = Surface Water and Sediment Sampling

MONITORING RESULTS

ID	Protected Resources Encountered	Area	AMM's Implemented	Residual Impacts
1	Wetland pools and farm sheep	SS6/SS7	GEN-10	None. Farm sheep contained. Alder occupied and staked out.
2	Protected trees	SS-46	Vegetation work Trimming, Disposal	Cons live ones, trimmed.
2	Santa Susana Perch	SS-46	VC1	None
2	Duckwee sp.	SS-46	VC1	None
2	Calif. Red-legged frog habitat	SS-46	VC5	Trimmed w/ hand tools only

NOTES AND RECOMMENDATIONS:

1030-1300 spent report writing in Bldg. 204.

Avoid all flagged plants, keep mower/out of Calif. Red-legged frog area.

skiller

Biologist Signature: [Signature]

Date: 1/6/11

HGL Field Supervisor Signature: [Signature]

Date: 1/6/11