



UNITED STATES ENVIRONMENTAL PROTECTION AGENCY  
REGION IX

75 Hawthorne Street  
San Francisco, CA 94105

October 22, 2010

Ms. Jenny Marek  
U.S. Fish and Wildlife Service  
2493 Portola Road, Suite B  
Ventura, CA 93003

Mr. Jeff Humble  
California Department of Fish and Game  
PO Box 1179  
Ventura, CA 93002

Ms. Mary Meyer  
California Department of Fish and Game  
226 West Ojai Avenue, Suite 101  
PMB 501  
Ojai, CA 93023

Subject: EPA Radiological Study of the Santa Susana Field Laboratory Area IV and the Northern Buffer Zone; **Quarterly Biological Monitoring Report #1**

Dear Ms. Marek, Mr. Humble, and Ms. Meyer:

The United States Environmental Protection Agency (US EPA) has begun its radiological study at Area IV and the Northern Buffer Zone of the Santa Susana Field Laboratory (SSFL) located in eastern Ventura County. EPA is conducting this project pursuant to federal legislative mandate HR2764, the Consolidated Appropriations Act of 2008, and the authority granted under the Comprehensive Environmental Response, Compensation, and Liability Act (CERCLA). Attached is EPA's Quarterly Biological Monitoring Report #1 dated October 22, 2010. The purpose of this report is to provide a quarterly monitoring update, which summarizes:

- Project Activities and Operations,
- Biological Surveys, Monitoring, and Impacts to Federally Listed Species and their Critical Habitat, if applicable,
- Biological Surveys, Monitoring, and Impacts to State listed species and Species of Special Concern,

- Riparian Area impacts, and
- Issues Encountered and Adaptive Management.

The attached report covers EPA project activities during the period from July 22 to October 5, 2010. EPA intends to issue biological monitoring status reports to document our ongoing compliance with the Biological Opinion concerning the subject project issued by the U.S. Fish and Wildlife Service (USFWS) on May 25, 2010 and our compliance with the substantive technical requirements of the California Endangered Species Act, the California Department of Fish and Game Code Section 1602 (riparian protection), the Federal Migratory Bird Treaty Act and the California Fish and Game Code Sections 3503 and 3503.5 (for protection of nesting birds).

Please give me a call at (415) 947-4148 if you have any questions regarding the information provided herein.

Sincerely,



Craig Cooper  
Project Manager  
SSFL Site

Cc:       Stephie Jennings, Department of Energy  
          Rick Brausch, California Department of Toxic Substances Control

Attachment:   Quarterly Biological Monitoring Report #1 dated October 22, 2010.

# QUARTERLY BIOLOGICAL MONITORING REPORT #1

## RADIOLOGICAL STUDY OF THE SANTA SUSANA FIELD LABORATORY AREA IV AND NORTHERN BUFFER ZONE

---

*Prepared for:*

**U.S. Environmental Protection Agency Region 9**  
75 Hawthorne Street  
San Francisco, CA 94105

*Prepared by:*

**HydroGeoLogic, Inc.**  
5800 Woolsey Canyon Road  
Building 204  
Canoga Park, CA 91304

*and*

**Envicom Corporation**  
28328 Agoura Road  
Agoura Hills, CA 91301

October 22, 2010

## INTRODUCTION

The U.S. Environmental Protection Agency (EPA) is conducting a radiological characterization of a portion of the Santa Susana Field Laboratory (SSFL), located in the Simi Hills of eastern Ventura County, California (**Figure 1**). The two areas at SSFL being characterized are Area IV, a 290-acre administrative section where the U.S. Department of Energy and its contractors once operated several nuclear reactors and associated fuel facilities and laboratories, and the Northern Buffer Zone (NBZ), a 182-acre area with no history of development that lies adjacent to Area IV. These two areas compose the Area IV Study Area.

Several activities associated with the radiological study of the Area IV Study Area have the potential to impact Federally listed species and their critical habitat, as well as resources protected under California State law. These activities include vegetation cutting, gamma scanning, geophysical survey, surface and subsurface soil sampling, groundwater monitoring well sampling, and surface water and sediment sampling. The scope of these activities is described in further detail in the Biological Assessment (BA) prepared for EPA by HydroGeoLogic, Inc. (HGL), and Envicom Corporation dated February 12, 2010. To minimize the impact to natural resources and riparian habitat within the study area, protection measures were developed and are being implemented as scanning activities progress. These measures are detailed in Appendices E, G and N, respectively, of the Site Management Plan (dated September 24, 2010).

EPA is conducting this project pursuant to federal legislative mandate HR2764, the Consolidated Appropriations Act of 2008, and the authority granted under the Comprehensive Environmental Response, Compensation, and Liability Act. Formal consultation under Section 7 of the Endangered Species Act has been conducted with the U.S. Fish and Wildlife Service (USFWS), and a Biological Opinion was issued on May 25, 2010. The USFWS Biological Opinion identified Avoidance and Minimization Measures keyed to each of the proposed activities and Federally listed species that may occur within the Action Area. EPA has agreed to implement the various components of the Area IV radiological study in compliance with the Biological Opinion and its requirements. Although not under discretionary approval, it is also EPA's goal to comply with the substantive technical requirements of the State of California natural resource protection laws, such as the California Endangered Species Act and California Fish and Game Code Section 1602 for impacts to riparian resources. Project activities also are being conducted to comply with additional applicable biological resource laws or regulations, including the Federal Migratory Bird Treaty Act and California Fish and Game Code 3503 and 3503.5 (for protection of nesting birds).

The purpose of this report is to provide a quarterly monitoring update, which summarizes 1) Project Activities and Operations, 2) Biological Surveys, Monitoring, and Impacts to Federally Listed Species and their Critical Habitat, if applicable, 3) Biological Surveys, Monitoring, and Impacts to State listed species and Species of Special Concern, 4) Riparian Area impacts, and 5) Issues Encountered and Adaptive Management. The report covers the period from July 22 to October 5, 2010.

## PROJECT ACTIVITIES AND OPERATIONS

The Area IV Study Area is subdivided into Subareas 3, 5A, 5B, 5C, 5D, 6, 7, 8, NE, and NW (**Figure 2**). The subareas have been divided into 76 Survey Sections (SS). The SSs include roads. To date, EPA has conducted vegetation cutting, gamma scanning, monitoring well sampling and geophysical survey tasks over portions of the project area.

Vegetation within the study area is being cut or trimmed to allow access for vehicles and equipment, and provide clearance for operation of gamma scanning equipment at optimum levels of sensitivity. Vegetation cutting protocols were prepared and are found in Appendix E of the Site Management Plan. Standard equipment used during vegetation cutting includes weed whackers, lopping shears, chainsaws, a skid steer with mower and fork-lift attachments, chipper, and a front-loading tractor for the safe removal of poison-oak branches (**Photo Plate 1**). Vegetation cutting began on July 22, 2010, in Subarea 5C with gamma scanning commencing the following week. Vegetation cutting has been completed in Subareas 5A, 5B, and 5C. The majority of Subarea 5B has been cut except for the Least Bell's vireo (*Vireo bellii* ssp. *Pusillus*) (LBV) habitat area in SS-12 that was off-limits until October 1 pursuant to Avoidance and Minimization Measure GEN-9 in the USFWS Biological Opinion. Cutting in this LBV area was underway as of October 5. A portion of Subarea 5D has been cut: specifically SS-53, 54, 55, 56, 57, and most of SS-51 that falls within Subarea 5D.

Gamma scanning is being accomplished using various scanning devices, depending on site conditions. Scanning equipment includes the ERGS off-road forklift vehicle, mule-mounted scanning devices, handcart, and handheld scanner (Photo Plate 1). Gamma scanning is mostly complete for Subarea 5C and the portion of Subarea 5B outside of the LBV habitat area in SS-12. Most of Subarea 5A has been scanned and was in the process of being completed as of October 5. Some areas will need to be rescanned due to the data gaps that occur during gamma scanning.

Geophysical surveys have been completed for Subarea 5C and the portion of Subarea 5B outside of the LBV area in SS-12.

The first of two monitoring well sampling events occurred in mid-July, with a total of 65 wells sampled. Light foot and vehicle traffic occurred on previously mowed areas spanning across Area IV.

## BIOLOGICAL CLEARANCE SURVEYS, MONITORING, AND IMPACTS

### *Clearance Survey Methodology*

Before project activities commenced within each of the subareas, qualified biologist(s) from Envicom conducted clearance surveys to document the presence/absence and location of Federal and State Special Status biological resources and riparian habitat (**Figure 3**). The locations of the resources have been marked in the field with conspicuous flagging, and mapped using Global Positioning System (GPS) technology and Geographic Information System (GIS) software. Mapped resources are shown on **Figures 4 through 7**. Clearance survey monitoring forms

(**Attachment 1**) are prepared for each clearance survey to document the resources observed and to identify which Avoidance and Minimization Measures included in the Biological Opinion are applicable to future activities occurring within the survey area.

### ***Biological Monitoring Methodology***

Qualified biological monitor(s) from Envicom are present on a daily basis. The monitors attend the safety meeting with field crews and monitor project activities, which during this monitoring period included vegetation cutting, gamma scanning and geophysical surveying. Monitoring well sampling was not monitored by the biological monitor(s) during this period because access to the monitoring wells was gained via established access and physical damage to listed species or their PCE's and habitats was not anticipated. The biological monitor(s) work alongside the crews to point out the locations of Special Status biological resources and in some cases assist the crews in avoiding impacts. Daily biological monitoring forms (**Attachment 2**) are prepared to document the activities monitored, Special Status biological resources encountered by the field activities, and any possible impacts.

### **Clearance Survey and Monitoring Results for Federally Listed Species**

Only one federally listed species addressed in the Biological Opinion has been documented in the project area: Braunton's milkvetch. The observed locations of Braunton's milkvetch are illustrated on Figures 4 through 7 and discussed in more detail below.

#### ***Braunton's milkvetch***

This species has been observed in Subareas 5A, 5B, and 5D. **Table 1** summarizes the locations where the species has been observed during either clearance surveys or monitoring. SS-51 likely contains the greatest density of Braunton's milkvetch (*Astragalus brauntonii*) in the project area (**Photo Plate 2**). A total of five (5) milkvetch plants have been incidentally cut or injured during vegetation cutting in SS-51. **Table 2** provides a description of each of the five incidents. Gamma scanning has not yet been conducted in SS-51. Outlying individual Braunton's milkvetch plants in SS-7 and SS-10 have been successfully protected during the vegetation cutting, gamma scanning, and geophysical survey activities completed in these survey areas.

Critical Habitat Unit 1d for Braunton's milkvetch covers portions of SS-51, 52, 55, 56, 58, 59. The Primary Constituent Elements (PCEs) (defined as features that are essential to the conservation of the species) for Braunton's milkvetch are: 1) calcium carbonate soils derived from marine sediment; 2) low proportion (<10%) of shrub cover directly around the plant; and 3) chaparral and coastal sage scrub communities characterized by periodic disturbances that stimulate seed germination (e.g., fire, flooding, erosion) and reduce vegetative cover. These PCEs are found in the southern portion of SS-51 and SS-58 where the greatest density of milkvetch occurs. Within this area, the calcium carbonate soils remain intact, and Vegetation Cutting activities have reduced the cover of shrubs rebounding from the 2005 Topanga Fire such as toyon (*Heteromeles arbutifolia*), chamise (*Adenostoma fasciculatum*), and sugar bush (*Rhus*

*ovata*) (Photo Plate 2). This disturbance may yield a beneficial short-term effect on the condition of the Critical Habitat.

### ***Dudleya species***

None of the Federally or State listed dudleya species have been encountered. However, many individual dudleya have been found in the project area in a withered, unidentifiable state (in addition to many identifiable *D. pulverulenta* and *D. lanceolata*, which are not protected) (**Photo Plate 3**). As a precaution, all unidentifiable dudleya have been flagged as protected, and a biological monitor has been present during project activities in the area. No flagged dudleya have been harmed during project activities.

### ***Potential vernal pool habitat for Vernal Pool Branchiopods***

A small seasonal wetland (40 feet long by 25 feet wide) was identified as potential habitat for **Vernal Pool Branchiopods** within SS-7. The wetland was delineated by a biological with flagging and declared to be off-limits unless a biological monitor is present (Photo Plate 3). The pool has been in a dry state since before the start of project activities in July 2010. No presence/absence survey for Riverside fairy (*Streptocephalus woottonii*) shrimp or vernal pool fairy shrimp (*Branchinecta lynchi*) has been conducted. The mule team made one pass through a limited section of the pool when it was dry, resulting in minor soil compaction and displacement created by the hoofprints.

### ***Least Bell's vireo potential habitat***

A riparian habitat strip identified as potential least Bell's vireo (*Vireo bellii ssp. pusillus*) (LBV) habitat in SS-12 was surveyed and flagged on August 13, 2010. The flagged area was set aside as off-limits to project activities until the end of the LBV breeding season on October 1<sup>st</sup>. No LBV have been observed in the study area during clearance surveys or monitoring. Vegetation cutting and gamma scanning activities were conducted in the LBV potential habitat after October 1, 2010.

### ***California gnatcatcher***

Before project activities commenced, a protocol survey and habitat assessment was conducted (April 9 to June 4), for California gnatcatcher (*Poliptila californica ssp. californica*) within the study area. This comprehensive survey was completed in compliance with USFWS protocol guidelines under permissible weather conditions: no California gnatcatchers were observed.

**Table 1**  
**List of Federally Listed Resources Observed**

Species/Resource	Survey Section	Subarea	Number of Individuals	Date
Braunton's milkvetch	SS-7	5C	1	7/28/2010
Braunton's milkvetch	SS-10	5B	2	8/13/2010
Braunton's milkvetch	SS-51	5D	500+ (estimated)	9/20/2010
Braunton's milkvetch	SS-58	5D	(not estimated)	9/20/2010
<i>Dudleya</i> sp.	SS-4	5C	2	7/22/2010
<i>Dudleya</i> sp.	SS-17	5A	10	8/17/2010
<i>Dudleya</i> sp.	SS-19	5A, 6	20	8/26/2010
Vernal pool branchiopod habitat	SS-7	5C	n/a	7/19/2010

**Table 2**  
**List of Federally Listed Resources Impacted**

Species/Resource (# impacted)	Survey Section	Date	Impact	Description	Mapped Location (UTM)
Braunton's milkvetch (1)	SS-51	9/24/10	Uprooted	Growing in clump of 4 milkvetch, plant was not flagged but surrounding ones were flagged.	341994E 3788680N
Braunton's milkvetch (1)	SS-51	9/24/10	Stem cut	1 foot from toyon stem clump, milkvetch stem mistaken for toyon stem.	341990E 3788662N
Braunton's milkvetch (1)	SS-51	9/24/10	Damaged root base	Stem nudged by skid steer hauling cut material. Still standing but wobbly. May fall in high winds or rain.	342009E 3788687N
Braunton's milkvetch (1)	SS-51	9/28/10	Injured	Large branch torn away from main stem	
Braunton's milkvetch (1)	SS-51	10/1/10	Injured	Badly damaged on lower main stem (likely from weed whacker).	3411865E 3788691N
Vernal pool branchiopod habitat	SS-7	7/29/10	Soil disturbed by hoof prints.	Mule made one pass through a portion of the vernal pool during dry conditions. Minor soil disturbance.	N/A

**Notes:**

UTM – Universal Transverse Mercator

N/A – not applicable



## Clearance Surveys and Monitoring Results for State Protected Biological Resources and Nesting Birds

The Santa Susana tarplant (*Deinandra minthornii*) is the only State-listed species observed during the clearance surveys and biological monitoring. However, other State protected biological resources have been observed. The location of Santa Susana tarplant and other State protected biological resources within the Action Area are illustrated on Figure 4 through 7. The following is a more detailed description of the observations and impacts associated with State protected biological resources.

### *Santa Susana tarplant*

This species is locally common in sections of Area IV with sandstone outcrops (Photo Plate 3). A summary of tarplant observations listed by Survey Section is shown in **Table 3**. Approximately 3 plants have been impacted by project activities to date (**Table 4**). Because the Santa Susana tarplant at SSFL has been in bloom with showy yellow flowers during the July to October work period, nearly every plant has been conspicuous and easily seen and avoided during project activities. The short, compact growth form also allows most vehicles and scanning equipment to closely approach and even occasionally pass over them (with assistance from the biologist) without causing damage.

### *Malibu baccharis*

Malibu baccharis (*Baccharis malibuensis*) has been recorded in Subarea 5D, with a significant population encountered in SS-51 and SS-58 (**Photo Plate 4**). Like the Santa Susana tarplant, Malibu baccharis exhibits a growth form that is short, compact, and not easily injured by project equipment when properly marked. However, unlike the tarplant, the baccharis is somewhat inconspicuous and has been occasionally overlooked when growing in the densely vegetated scrub and burned chaparral present at SS-51. Approximately 10 to 15 plants have been inadvertently trimmed, but none have been lost.

### *Southern California black walnut*

A population of southern California black walnut (*Juglans californica*) trees are located along the north-facing slopes of Subarea 5D (SS-51 and SS-58 in particular). The 2005 Topanga Fire burned most of the mature walnut trunks, but many of the trees have resprouted from the bases of the burned trunks. To create the clearance required for the scanning equipment, some of the new trunks growing outward required pruning to the standard 6 to 18 inches above ground level, but many trunks growing vertically have been left intact.

### *Coast horned lizard*

Suitable habitat was identified in SS-12, 13, 18, 19, 20, 21, 22, 23, 51, and 58. Coast horned lizards (*Phrynosoma coronatum blainvillii*) were observed in SS-51 and in SS-113 (road section adjacent to SS-58) (Photo Plate 4). Seven of the eight individuals observed in SS-51 and SS-58 have been relocated to other Survey Sections or to just outside the Area IV boundary. The other individual was left on site because it was determined that the animal was not in harm's way.

***Silvery legless lizard***

Suitable habitat was identified in SS-12, 13, 18, 19, 20, 21, 22, 23, 51, and 58. No silvery legless lizards (*Anniella pulchra pulchra*) have been found in the project area.

***Coast patch-nosed snake***

Suitable habitat was identified in SS-12, 19, 20, 51, and 58. No coast patch-nosed snakes (*Salvadora hexalepis virgultea*) have been found in the project area.

***Nesting birds: mourning dove***

An active mourning dove (*Zenaida macroura*) nest with two large chicks was discovered in a laurel sumac (*Malosma laurina*) at the western edge of SS-19 (UTM 342696E, 3789193N) on September 8, 2010. A 50 to 60-foot buffer was established: no project activities were allowed except for through traffic on an adjacent road. The nest was active at least through Friday, September 10. When checked on September 13, the nest was empty but intact; fecal material was observed on the surrounding vegetation, suggesting the chicks may have fledged and flown away. The surrounding area was surveyed for signs of the chicks. No chicks were located within a 100-foot radius of the nest. One of the adults continued to loaf in a shrub near the nest.

***Cooper's Hawk***

Cooper's hawks (*Accipiter cooperii*) have been observed in the project area, although no nesting has been documented. Suitable nesting habitat likely exists in the oak woodlands located in the northwestern and southwestern portions of the project area.

***Loggerhead shrike***

One loggerhead shrike (*Lanius ludovicianus*), likely a winter visitor, was observed on August 26, 2010, at SS-54 and was still in the area at least through October 1, 2010. Loggerhead shrikes inhabit open country with short vegetation and breed in isolated trees or large shrubs. In coastal Ventura County they are mainly found as winter visitors.

***California horned lark***

California horned lark (*Eremophila alpestris actia*) typically nest on the ground in annual grassland areas such as those found throughout Area IV. Horned larks were observed in the project area during the California gnatcatcher surveys conducted earlier in the year and were presumably the *E. a. actia* subspecies. Nesting was not observed and the species has not been observed during clearance surveys or biological monitoring.

***Southern California rufous-crowned sparrow***

Southern California rufous-crowned sparrows (*Aimophila ruficeps*) are year-round residents in the Simi Hills and Santa Susana Mountains, typically nesting at or near ground level near rocky outcrops and associated low-growing shrubby and herbaceous cover. This species was observed during the California gnatcatcher surveys conducted earlier in the year. As with the California horned lark, nesting was not observed and the species has not been observed during clearance surveys or biological monitoring.

***San Diego desert woodrat***

Suitable habitat was identified in SS-12, 13, 16, 17, 18, 19, 20, 21, 22, 23, 25, 51, and 58. Incidental sightings of big-eared woodrat (*Neotoma macrotis*) have been recorded in SS-17 and SS-19. No San Diego desert woodrats (*Neotoma lepida*) have been found in the project area.

**Table 3  
List of State-Sensitive Resources Observed**

Species/Resource	Survey Section	Subarea	Number of Individuals	Date
Santa Susana tarplant	SS-7	5C	5	7/19/2010
Santa Susana tarplant	SS-7	5C	28	7/26/2010
Santa Susana tarplant	SS-9	5B	3	8/13/2010
Santa Susana tarplant	SS-10	5B	5	8/13/2010
Santa Susana tarplant	SS-14	5B	1	8/13/2010
Santa Susana tarplant	SS-14	5A	70	8/17/2010
Santa Susana tarplant	SS-15	5A	30	8/17/2010
Santa Susana tarplant	SS-16	5A	10	8/17/2010
Santa Susana tarplant	SS-17	5A, 6	150	8/17/2010
Santa Susana tarplant	SS-17	5A	130	8/23/2010
Santa Susana tarplant	SS-18	5A, 6	25	8/23/2010
Santa Susana tarplant	SS-19	5A, 6	15	8/26/2010
Malibu baccharis	SS-51	5D	500+ (estimated)	9/20/2010
Southern California black walnut	SS-51	5D	40+ (estimated)	9/20/2010
Coast horned lizard	SS-113	5D	1	9/20/2010
Coast horned lizard	SS-51	5D	2	9/29/2010
Coast horned lizard	SS-51	5D	5	10/1/2010
Mourning dove active nest	SS-19	5A	2 chicks	9/8/2010
Loggerhead shrike (non-nesting)	SS-54	5D	1	8/27/2010
Riparian area	SS-1	5B, 5C	n/a	7/23/2010
Riparian area	SS-12	5C	n/a	8/13/2010

**Table 4**  
**List of State Sensitive Resources Impacted**

Species/Resource (# impacted)	Survey Section	Date Impacted	Impact	Description	Mapped Location (UTM)
Santa Susana tarplant (1)	SS-51	9/24/10	Trampled	Small individual growing in pavement cracks in previously disturbed road at SS- 17.	342611E, 3789381N
Santa Susana tarplant (2)	SS-51	9/24/10	Injured	Two large plants covered in mulch. Biologist brushed some off. Winter rains may wash rest away.	342535E, 3789370N
Malibu baccharis (10-15)	SS-51	(various)	Trimmed	No plants have been completely lost but some have been trimmed back by weed whackers when not properly flagged before survey activities.	
Southern California black walnut (~40)	SS-51	(various)	Trimmed	Many resprouts from 2005 fire have been trimmed to accommodate scanning equipment.	
Coast horned lizard	SS-51, SS-58	(various)	Relocated	Relocated to other Survey Sections or outside Area IV.	

**Clearance Surveys and Monitoring Results for Riparian Habitat**

As illustrated on Figure 5 and 6, a total of four (4) ephemeral drainages have been encountered in SS-1 and SS-12 during project activities. Shrub species associated with these areas are primarily mule fat (*Baccharis salicifolia*) and willow (*Salix* sp.), with coast live oak (*Quercus agrifolia*) and coyote brush (*Baccharis pilularis*) growing on the banks. The drainages have been dry since the start of project activities in July 2010, and likely only contain surface water during rainstorms. Vegetation cutting in these areas has been performed using hand tools, and plants located within or on the banks of the drainages have been left standing, with some trimming being conducted near ground level to allow for scanning (**Photo Plate 5**). Additional details on the activities conducted within each of the four drainages is provided in **Table 5**. These riparian areas do not support enough water to be considered suitable habitat for California red-legged frog. However, activities within the riparian habitat has been conducted under the supervision of

a qualified biological monitor with experience identifying California red-legged frogs and habitat.

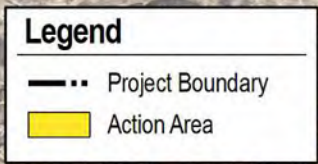
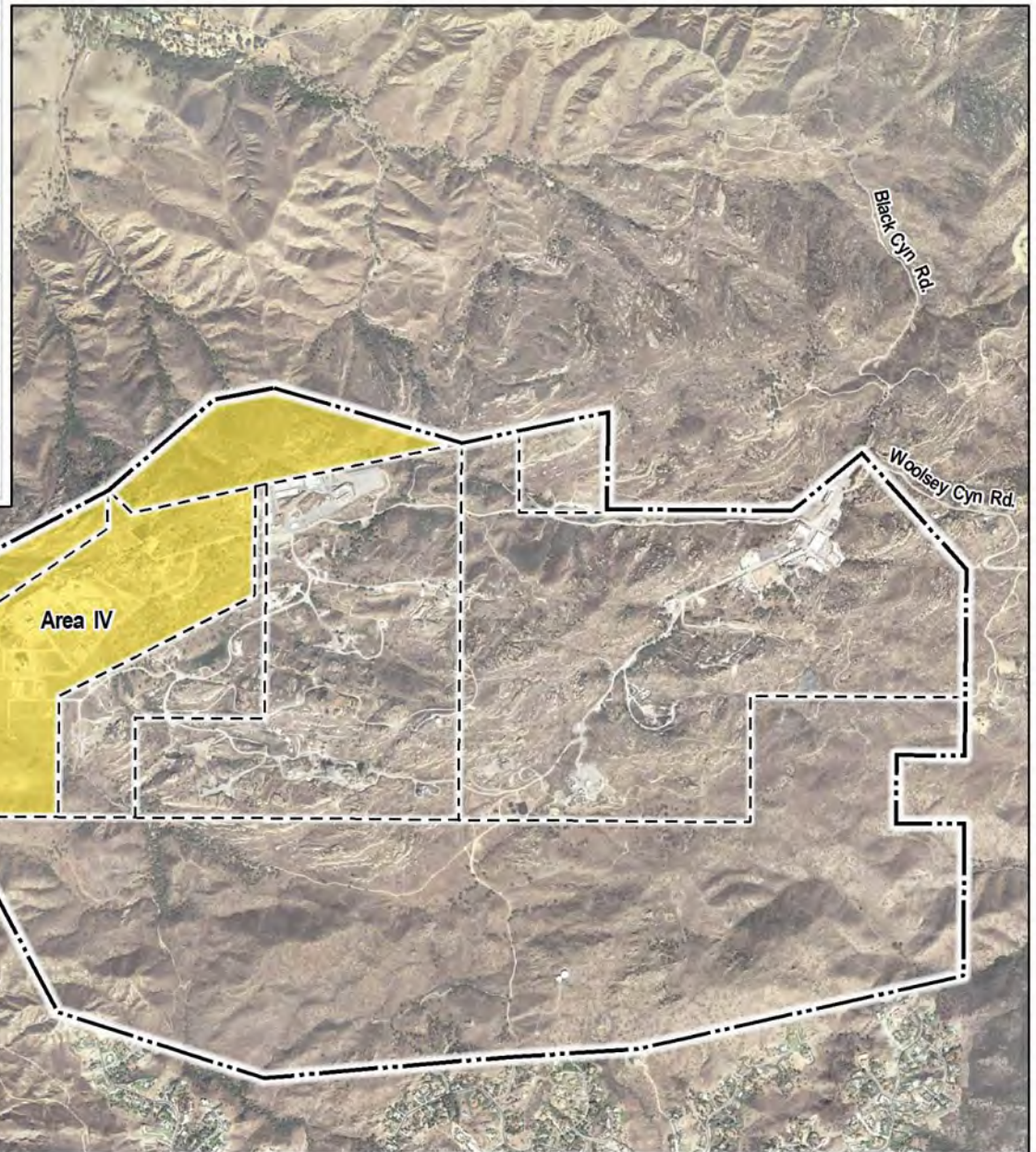
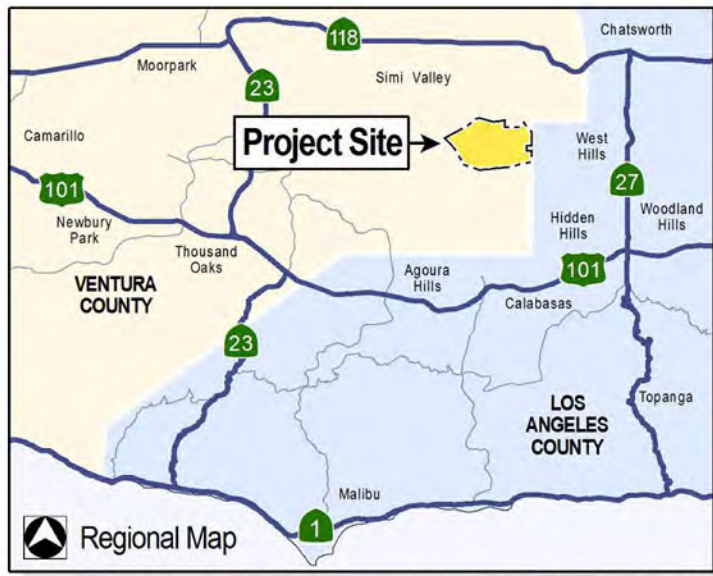
**Table 5**  
**Details on Activities Performed within Riparian Habitat**

<b>Survey Section</b>	<b>Approximate Dimensions</b>	<b>Description of Activities Performed</b>	<b>Significant Impacts</b>
SS-1	500' long by 3-6' wide	Trimming of horizontal shrub limbs and limbs near ground level to passage between shrubs and scanning. Scanning by mule.	None
SS-1	200' long by 3-6' wide	Trimming of horizontal shrub limbs and limbs near ground level to passage between shrubs and scanning. Scanning by mule.	None
SS-1	235' long by 3-6' wide	Trimming of horizontal shrub limbs and limbs near ground level to passage between shrubs and scanning. Scanning by mule.	None
SS-12	450' long by 3-6' wide	Trimming of horizontal shrub limbs and limbs near ground level to passage between shrubs and scanning.	None

**Issues Encountered and Adaptive Management**

To date there have been no issues with implementing the terms, conditions, avoidance and minimization measures and/or other protective measures required by USFWS in the Biological Opinion. Therefore, no modifications to the terms and conditions to enhance the protection of Federally listed and State-Listed/Sensitive species are needed.

## **Figures**

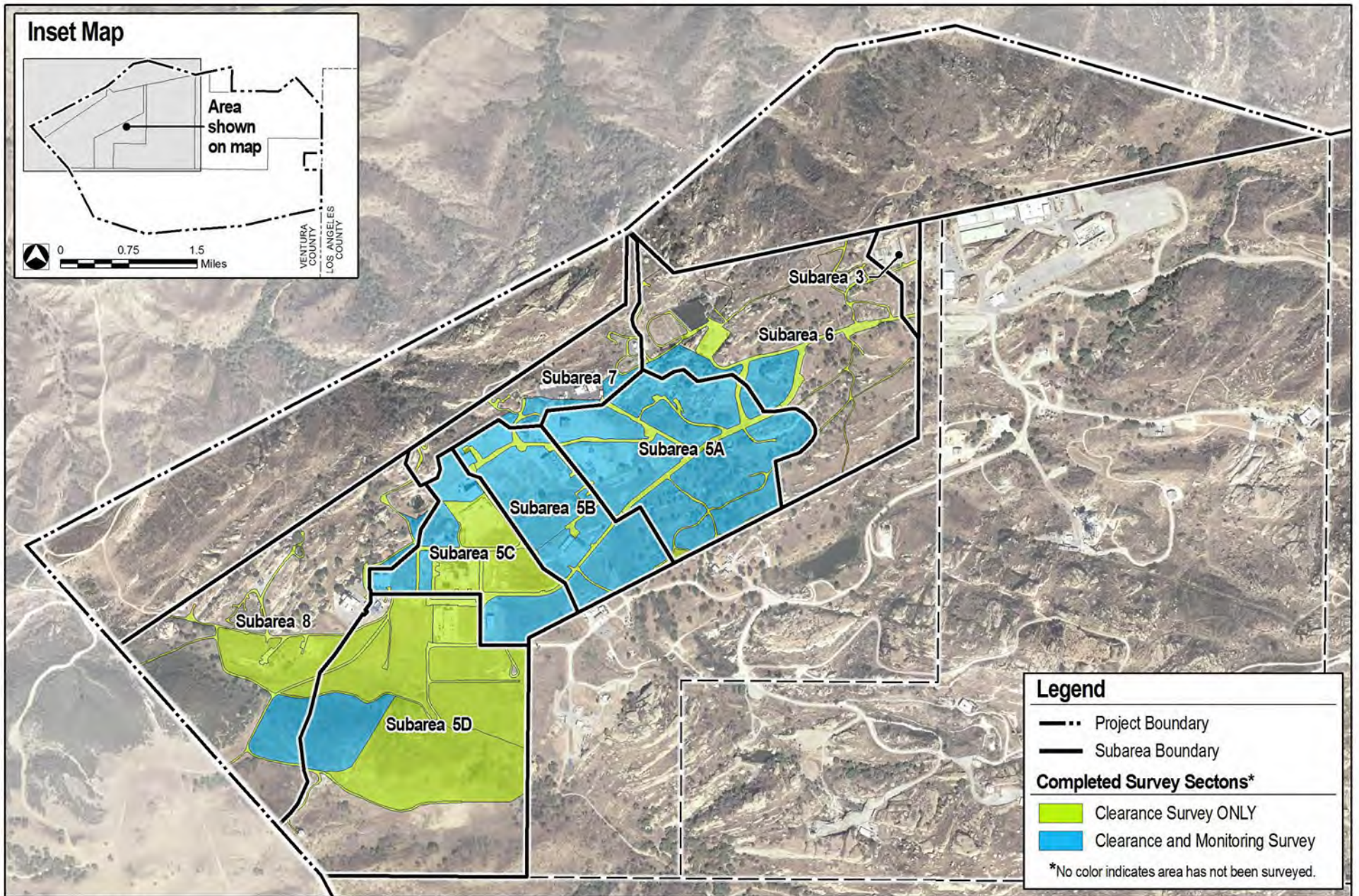


Aerial Source: CIRGIS, 2007.



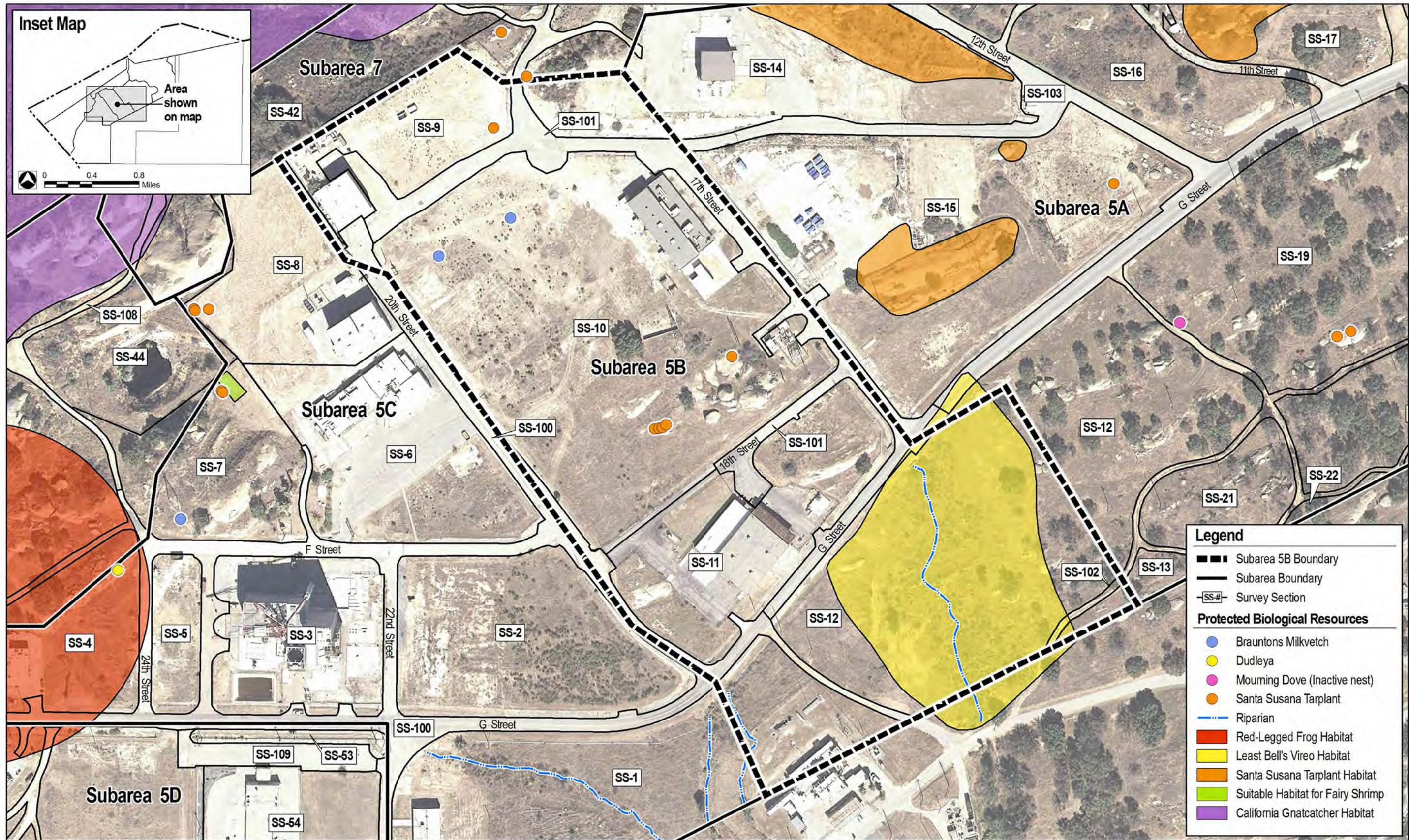
Aerial Source: CIRGIS, 2007.



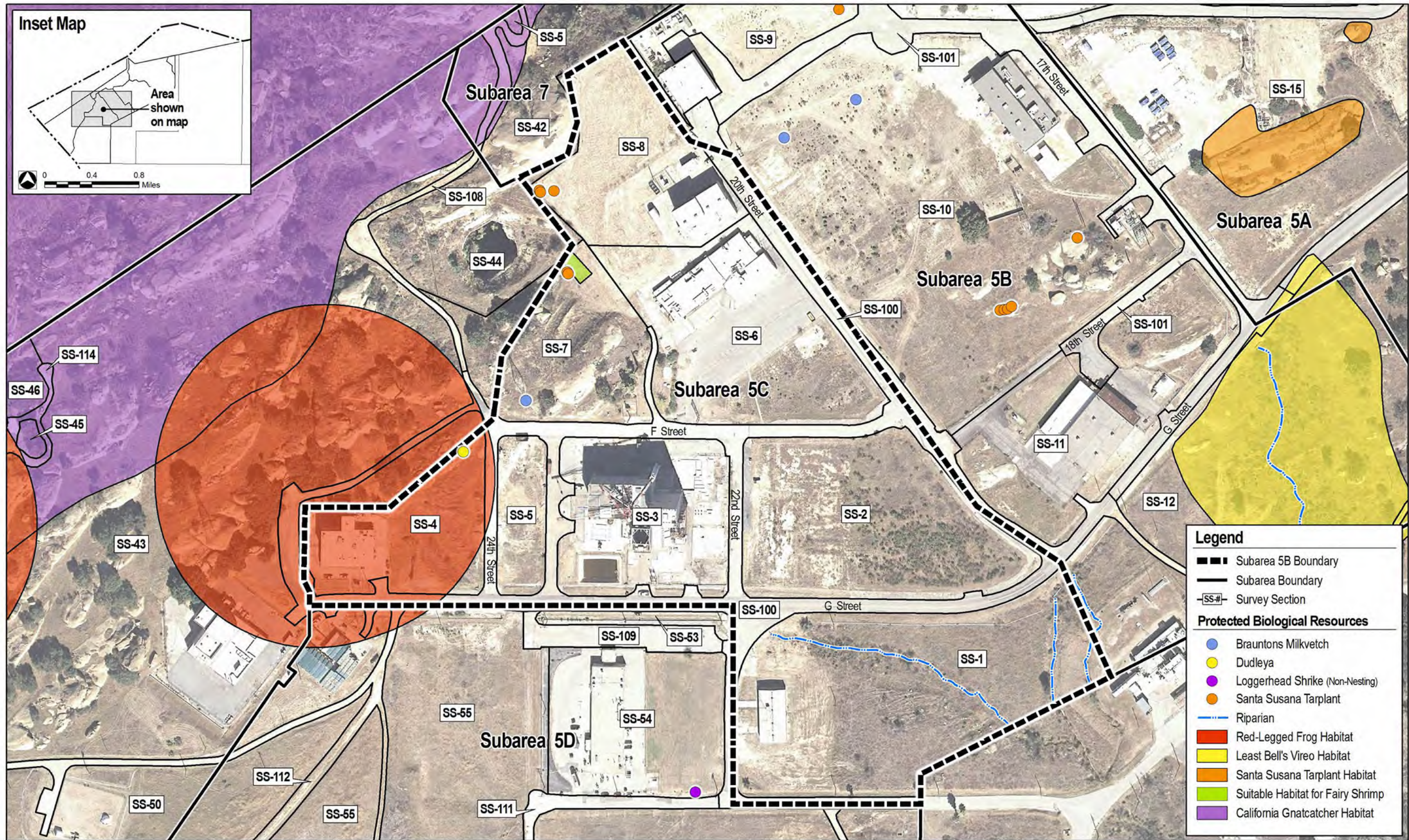


Aerial Source: CIRGIS, 2007.

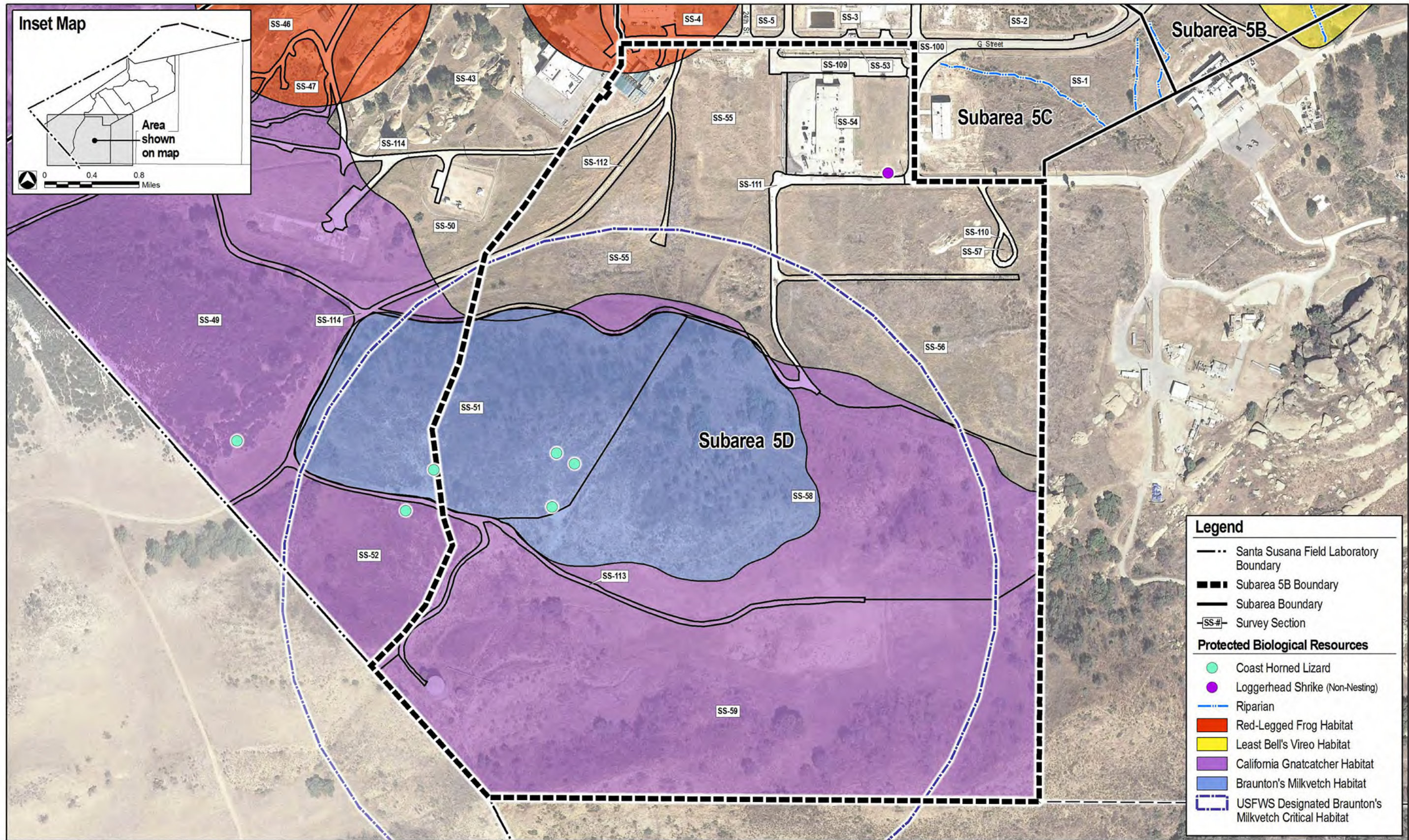




Aerial Source: CIRGIS, 2007.



Aerial Source: CIRGIS, 2007.



Aerial Source: CIRGIS, 2007.

## **Photo Plates**



**Plate 1A** – Vegetation Cutting crew cutting back a chamise stand in SS-19.



**Plate 1B** – Vegetation Cutting crew with chipper in SS-18.



**Plate 1C** – ERGS vehicle conducting Gamma Scanning in SS-9.



**Plate 1D** – Mule with mounted scanner conducting Gamma Scanning in SS-7.



**Plate 2A** – Handcart scanner operator conducting Gamma Scanning in SS-8.



**Plate 2B** – Braunton's milkvetch before Vegetation Cutting in SS-51.



**Plate 2C** – Braunton's milkvetch after Vegetation Cutting in SS-51.



**Plate 2D** – Braunton's milkvetch Critical Habitat Unit 1d (SS-51) during Vegetation Cutting, showing reduction in cover along with flagged Braunton's milkvetch and Malibu baccharis.





**Plate 3A** – An example of some *Dudleya* plants in an unidentifiable late-summer condition that have been protected from Vegetation Cutting activities (SS-19).



**Plate 3B** – The seasonal wetland at SS-7 with ERGS scanner.



**Plate 3C** – Santa Susana tarplant growing on sandstone outcrop in SS-18.



**Plate 3D** – Santa Susana tarplant protected from mowing activity during Vegetation Cutting (SS-18).



**Plate 4A** – SS-17 during Vegetation Cutting showing intact Santa Susana tarplant.



**Plate 4B** – Vegetation cutting activity among protected Malibu baccharis in SS-51.



**Plate 4C** – Four young coast horned lizards being relocated from SS-51 to another area.



**Plate 4D** – Small shrubs located along an ephemeral drainage in SS-12 after Vegetation Cutting.



**Plate 5A** – Ephemeral drainage with reduced vegetative cover in SS-12 after Vegetation Cutting.



**Plate 5B** – Gamma Scanning activity via mule in SS-1.

**ATTACHMENT 1**  
**BIOLOGICAL CLEARANCE SURVEY FORMS**

Date: 7/23/10

Sheet 1 of 1

BIOLOGICAL RESOURCE CLEARANCE SURVEY FORM

Work Area: SC-1 and ~~part of~~ <sup>part of</sup> SB (no section # given for SB portion)

SURVEYS PERFORMED

Table with 4 columns: ID, Survey Type, Biologist, Expiration. Row 1: 1, Special-status species, suitable habitat, nesting birds, J. Anderson, Mar 1, 2011

SURVEY FINDINGS

Table with 4 columns: ID, Protected Resources, Flagged (Y/N), Applicable Avoidance and Minimization Measures. Row 1: 1, Riparian vegetation/drainages, N, HGL SMP "Protection of Riparian Resources" N-1 to N-3. Row 2: 1, Coast live oaks/willows, N, Trees shall not be cut. Vegetation Management Protocols in HGL-SMP related to oak trees.

NOTES AND RECOMMENDATIONS:

A few small raised drainages cross site which contain some riparian vegetation within channel and on banks and adjacent to banks. Native vegetation within banks and channel as well as associated riparian species (willows, oaks, purple fat) adjacent to drainages shall not be cut to 6-18 inches. Understory branches of the native vegetation and trees can be trimmed to allow easier access by gamma scanning. All non-native vegetation within drainages can be cut to 6-18 inches. Drainages will require hand scanning methods, perhaps the steeper in some areas.

Biologist Signature: [Signature]
HGL Field Supervisor Signature: Leah Speyer

Date: 7/23/10
Date: 7/23/10

Date: 7/22/10

Sheet 1 of 1

**BIOLOGICAL RESOURCE CLEARANCE SURVEY FORM**

Work Area: 5C-2

**SURVEYS PERFORMED**

ID	Survey Type	Biologist	Expiration
<u>1</u>	<u>Special-status species, Suitable habitat and nesting birds.</u>	<u>J. Anderson</u>	<u>MAR 1, 2011</u>

**SURVEY FINDINGS**

ID	Protected Resources	Flagged (Y/N)	Applicable Avoidance and Minimization Measures
<u>1</u>	<u>None found</u>		

**NOTES AND RECOMMENDATIONS:**

All vegetation within 5C-2 can be cut to 6-18 inches  
in height.

Some shrubs can be cut to less than 6 inches to allow  
passage of fork-1.1ft mounted gamma scanner  
with reduced risk of punctured tires provided is  
done to minimum extent possible.

Biologist Signature: J. Anderson

Date: 7/23/10

HGL Field Supervisor Signature: Leah Sperry

Date: 7-23-10



**BIOLOGICAL RESOURCE CLEARANCE SURVEY FORM**

Work Area: 5C-4

**SURVEYS PERFORMED**

ID	Survey Type	Biologist	Expiration
1	Special-status species, suitable habitat and nesting birds	J. Anderson	MAR 1, 2011

**SURVEY FINDINGS**

ID	Protected Resources	Flagged (Y/N)	Applicable Avoidance and Minimization Measures
1	Dudleya sp. (2) Coast live oaks w/ dbh > 3in	Y *Y*	HGL-SMP Protective Measures pgs 6-16, 17 Vegetation Management Protocols HGL-SMP related to oak trees pg E-2
			that can't be cut to 6-18" are
			* Saplings flagged to avoid confusion w/ shrubs, but adult trees are obvious and not flagged.

**NOTES AND RECOMMENDATIONS:**

- Part of 5C-4 was surveyed <sup>to</sup> for ~~clearance~~ area on July 19, 2010, remainder surveyed during this visit.
- Two (2) Dudleya sp. (unknown species) found along rock ridges - not in condition to identify to species. Two dudleya are in close proximity, location not clear w/ stake & pink flagging. Also plants marked with pink flagging. Area these plants should be avoided and vegetation cutting in vicinity requires supervision by biologist.
- Several coast live oaks - adult, saplings and seedlings. Seedlings can be cut. Saplings to 6-18 inches. Saplings > 3in diameter at breast height and adult trees can only have lower branches pruned if < 20% girth of main stem.
- Some poison oak at site - has been flagged w/ pink flagging.

Biologist Signature: [Signature]

Date: 7/23/10

HGL Field Supervisor Signature: [Signature]

Date: 7/23/10



**BIOLOGICAL RESOURCE CLEARANCE SURVEY FORM**

HSA RWS-5C

Work Area: Sub-section 2A (later renamed section 4 & 5)

**SURVEYS PERFORMED**

#	Survey Type	Biologist	Expiration
	Special-status species and suitable habitat survey	J. Anderson	<del>March 1, 2011</del> onset of nesting bird season

**SURVEY FINDINGS**

#	Protected Species/Suitable habitat	Flagged (Y/N)	Applicable Avoidance and Minimization Measures
	<u>NONE FOUND.</u>		

**NOTES AND RECOMMENDATIONS:**

- Project activities in sub-section 2A understood to involve veg clearance, gamma scanning, and surface/subsurface soil sampling.
- Survey boundary shown on attached figure, defined by edges of pavement except along northwest boundary where it is marked by 3 stakes/flagging.
- No special-status species found within sub-section 2A.
- Centaurea solstitialis* (invasive weed) occurs in 2 small locations but J. Anderson and Leah Speranza cut/uprooted to prevent from going to seed. Leah will check before activities to see if more has come up and ensure has not gone to seed. Implementation of GEN-3 not considered necessary in this case.
- All vegetation can be cut within surveyed boundaries.
- Will need to verify if site is within 300ft of riparian or aquatic habitat.
- Please remind veg clearance crew of "NO GEN-3" before they arrive at site to SSFL site.

Biologist Signature: \_\_\_\_\_

*J. Anderson*

Date: July 19, 2010

HGL Field Supervisor Signature: \_\_\_\_\_

*T. Tuttle*

Date: July 19, 2010



Date: 7/26/10

Sheet 1 of 12

### BIOLOGICAL RESOURCE CLEARANCE SURVEY FORM

Work Area: 5C-7

#### SURVEYS PERFORMED

ID	Survey Type	Biologist	Expiration
1	Special-status species, suitable habitat and nesting birds	J. Anderson	Nov 1, 2011

#### SURVEY FINDINGS

ID	Protected Resources	Flagged (Y/N)	Applicable Avoidance and Minimization Measures
1	Santa Susana tarplant	Y	HGL-smp pg 646-647
1	Coast live oaks	N	HGL-smp veg management protocols for coast live oaks.

#### NOTES AND RECOMMENDATIONS:

~~28 Santa Susana tarplant~~ ~~||||~~ ~~||||~~ ~~||||~~ ~~||||~~ ~~||||~~

~~3 - 20~~

28 Santa Susana tarplant on and around sandstone rock outcrops.  
Some poison oak.

\* Some SS Tarplant on rocks not Flagged

Biologist Signature: [Signature]

Date: 7/26/10

HGL Field Supervisor Signature: [Signature]

Date: 7/26/10

**BIOLOGICAL RESOURCE CLEARANCE SURVEY FORM**

HSA ~~Area~~ - 5C Portions  
 Work Area: Sub-section 3A (~~the~~ <sup>later renamed</sup> Section 8)  
and 7

**SURVEYS PERFORMED**

#	Survey Type	Biologist	Expiration
1	Special-status species and Suitable habitat survey	J. Anderson	Onset of 2010/2011 rainy season, typically beginning in Nov, 2010.

**SURVEY FINDINGS**  
~~Demarcated~~

#	Protected Species/Suitable habitat	Flagged (Y/N)	Applicable Avoidance and Minimization Measures
1	Santa Susana tarplant (5 individuals)	Y	GS-5; VC-10; SS-1
2	Potentially suitable habitat for Vernal pool Branchiopods	Y	GS-3; GEN-10
3	Upland habitat for red-legged frog	N	GEN-11; VC-5; GS-4 ( <del>VC-5</del> )

**NOTES AND RECOMMENDATIONS:**

- Project activities in sub-section 3A understood to involve vegetation clearance, gamma scanning, and surface/subsurface soil sampling.
- Survey boundary shown on attached figure - defined by edges of pavement, chain link fencing, or ~~along~~ <sup>portion of</sup> western boundary the bottom of slope/edge of "flat" area.
- Five individual Santa Susana tarplants flagged w/ pink flagging. An EMICOM biologist shall be present during Veg clearance / gamma scanning adjacent to or over this species. The Santa Susana tarplant shall not be cut. See above applicable Amms.
- Potentially suitable habitat for vernal pool branchiopods (fairy shrimp) located in shallow depression that fills seasonally with water. Area has been demarcated w/ stakes flagging at 4 corners. Gamma scanning within this area shall be done by stroller or by hand. An EMICOM biologist shall be present during Veg clearance or gamma scanning within this area. Soil sampling in this area should be avoided. If can't be avoid discuss w/ EMICOM biologist before activity.
- Portions of area appear to be within 300 ft of aquatic or riparian habitats which are upland habitat for potentially occurring red-legged frog. This will be verified. See applicable Amms GEN-11; VC-5; GS-4.

Biologist Signature: [Signature]  
 HGL Field Supervisor Signature: [Signature]

Date: JULY 19, 2010  
 Date: July 19, 2010

~~Other~~ Please remind vegetation clearance crews of Amm GEN-3 before beginning project site.

Date: 8/13/10

Sheet 1 of 1

**BIOLOGICAL RESOURCE CLEARANCE SURVEY FORM**

Work Area: 5B-9

**SURVEYS PERFORMED**

ID	Survey Type	Biologist	Expiration
1	Special-status species survey, suitable habitat, and nesting birds	J. Anderson	MAR 1, 2011

**SURVEY FINDINGS**

ID	Protected Resources	Flagged (Y/N)	Applicable Avoidance and Minimization Measures
1	Santa Susana tamplant	Y	Ve-10; 6S-5; HGL-Smp2 pgs 646-647

**NOTES AND RECOMMENDATIONS:**

5B-9 extends into ~~area~~ HSA-7 as well.  
 Santa Susana  
 One tamplant on flat terrain in southeast corner of section 9, and two tamplants on rock outcrops in northeast portion of section.  
 Santa Susana

Biologist Signature: *[Signature]*

Date: 8/13/10

HGL Field Supervisor Signature: *[Signature]*

Date: 8/17/10

Date: 8/13/10

Sheet 1 of 1

**BIOLOGICAL RESOURCE CLEARANCE SURVEY FORM**

Work Area: 5B-10

**SURVEYS PERFORMED**

ID	Survey Type	Biologist	Expiration
1	Special-status species, suitable habitat and nesting birds	J. Anderson	Mar 1, 2011

**SURVEY FINDINGS**

ID	Protected Resources	Flagged (Y/N)	Applicable Avoidance and Minimization Measures
1	Braunton's milkvetch (2)	Y	VC-3; HGL-SMP Protective Measures <del>GS-1; GS-2</del> pgs 6-4 to 6-5.
1	Santa Susana transplant (5)	Y	GS-5, VC-10 HGL-SMP pgs 646-47
1	Coast live oaks	N	HGL-SMP Vegetation Management Protocols related to native oak trees

**NOTES AND RECOMMENDATIONS:**

• Several coast live oaks. Only understory branches less than 2000 diameter by main trunk can be cut.

Biologist Signature: *J. Anderson*

Date: 8/13/10

HGL Field Supervisor Signature: *Loch Spargo*

Date: 8/17/10



**BIOLOGICAL RESOURCE CLEARANCE SURVEY FORM**

Work Area: SB-12

**SURVEYS PERFORMED**

ID	Survey Type	Biologist	Expiration
1	Special status species, suitable habitat, nesting birds	J. Anderson	MAY 1, 2011

**SURVEY FINDINGS**

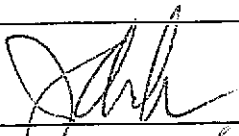
ID	Protected Resources	Flagged (Y/N)	Applicable Avoidance and Minimization Measures
1	Potential Least Bell's Vireo habitat	Y	GEN-9;
1	Coast live oaks	N	Vegetation management protocols HGL-SMP related to native oak trees

**NOTES AND RECOMMENDATIONS:**

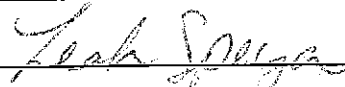
All Activities within area identified as potential least Bell's vireo habitat must be delayed until October 1, 2010. Area has been boundary'd. This area includes all necessary buffers from riparian habitat least Bell's vireo habitat, based on discussion w Mark Flynn of USFWS. Boundary has been staked and flagged.

In Areas within section 17 outside of the potential least Bell's vireo habitat ~~use~~ use of the EROS is OK, where feasible.

Several coast live oaks. Only understory branches less than 20% diameter of main trunk can be cut.

Biologist Signature: 

Date: 8/13/10

HGL Field Supervisor Signature: 

Date: 8/17/10



**BIOLOGICAL RESOURCE CLEARANCE SURVEY FORM**

ENVICOM CORPORATION

<b>Survey Section (SS):</b> SS-12	<b>Area:</b> 5A, 5B
<b>Biologist:</b> Scott Werner	<b>Date:</b> 9/10/2010
<b>Survey Type:</b> <i>amendment to original clearance report dated 8/13/2010 by Jim Anderson</i>	<b>Expiration:</b> February 15, 2011

**SURVEY FINDINGS**

<b>Survey Section</b>	<b>Protected Resources</b>	<b>Monitor needed?</b>	<b>Applicable Avoidance and Minimization Measures</b>
SS-12	Suitable habitat for California Special Concern Species	Y	Monitor required during mechanized vegetation removal activities or off-road vehicle use

**NOTES AND RECOMMENDATIONS:**

Per our recent conversations about the informal agreement with the California Department of Fish and Game to protect State-listed species, this report describes potentially occurring State-listed species with SS-12. SS-12 contains suitable habitat for the following California Special Concern species: coast horned lizard (*Phrynosoma blainvillii*), silvery legless lizard (*Anniella pulchra pulchra*), San Diego desert woodrat (*Neotoma lepida intermedia*), and coast patch-nosed snake (*Salvadora hexalepis virgultea*).


Suitable habitat for coast horned lizard consists of loose soils with shrubs or trees for cover, and rocky outcrops for basking.

Silvery legless lizard habitat consists of areas with loose soil, moisture, warmth, and plant cover with a leaf litter layer.

San Diego desert woodrat can be found in scrub and chaparral areas with rock outcrops in which to build their middens and yucca or cactus to obtain food moisture. This species' range overlaps with the big-eared woodrat, which has been documented onsite.

Coast patch-nosed snake habitat consists of grasslands, scrub, or chaparral vegetation.

Much of the suitable habitat for these species occurs in the scrubby least Bell's vireo habitat area, which will require monitoring again when it is cleared after October 1.

Biologist Signature: 

Date: 9/10/10

HGL Field Supervisor Signature: 

Date: 9-22-10

Date: 8/26/10

Sheet 1 of 1

**BIOLOGICAL RESOURCE CLEARANCE SURVEY FORM**

Work Area: 5B-13

**SURVEYS PERFORMED**

ID	Survey Type	Biologist	Expiration
1	Special-status species, suitable habitat and nesting birds	J. Anderson	MAR 11, 2011

**SURVEY FINDINGS**

ID	Protected Resources	Flagged (Y/N)	Applicable Avoidance and Minimization Measures
1	Coast live oaks	N	Vegetation Management Protocols in HMI-SMP relevant to native oak trees.

**NOTES AND RECOMMENDATIONS:**

Coast live oaks - ~~pruning~~ pruning of lower branches < 20% girth of main stem only

Monitoring biologist shall supervise vegetation clearance, gamma scanning using APGS or mule and other project activities involving light or heavy off-road vehicle use due to suitable habitats for coast horned lizard, silver legless lizard and San Diego desert woodrat (species of special concern)

Biologist Signature: *[Signature]*

Date: 8/31/10

HGL Field Supervisor Signature: *[Signature]*

Date: 9-1-10

Date: 8/13/10

Sheet 1 of 1

**BIOLOGICAL RESOURCE CLEARANCE SURVEY FORM**

Work Area: 5B-14 (portion within HSA-5B and HSA-7 only)

**SURVEYS PERFORMED**

ID	Survey Type	Biologist	Expiration
1	Special status species, suitable habitat and nesting birds	J. Anderson	MAR 1, 2011

**SURVEY FINDINGS**

ID	Protected Resources	Flagged (Y/N)	Applicable Avoidance and Minimization Measures
1	Santa Susana Juniper (1)	Y	G-5, VC-10; <del>646-47</del>
1	Coast live oaks	N	HGL-SMP vegetation Management (no cuts related to native oaks trees)

**NOTES AND RECOMMENDATIONS:**

Portions of ~~5B~~ Section 14 surveyed within HSA-5B and HSA-7. Portion of Section 14 within HSA-5A not surveyed.

Several coast live oaks. Only understory branches less than 20% diameter of main trunk can be cut.

Biologist Signature: *[Signature]*

Date: 8/13/10

HGL Field Supervisor Signature: *[Signature]*

Date: 8/14/10

Date: 17 Aug 2010

Sheet 1 of 1

**BIOLOGICAL RESOURCE CLEARANCE SURVEY FORM**

Work Area: HSA-5A-15 16 and 17 (part)  
HSA-5B-14 (part)  
**SURVEYS PERFORMED**

ID	Survey Type	Biologist	Expiration
1			MAR 1, 2011

**SURVEY FINDINGS**

ID	Protected Resources	Flagged (Y/N)	Applicable Avoidance and Minimization Measures
1	<u>San Susana</u>	<u>Y</u>	<u>Do not cut, scan over top</u>
1	<u>Dusley sp. 6</u>	<u>Y</u>	<u>Do not cut, scan over top</u>

**NOTES AND RECOMMENDATIONS:**

The following areas within HSA-5A were not completed during this survey:  
No Areas south of main road were done

Not Done 55-13

Not Done Portions of 5517 in NE and SE, and vertical wall at far west as shown in red on attached map.

This survey included the following areas:

- o HSA-5A-15
- o HSA-5A-16
- o HSA-5A-17 (except two small portions of 17 in northeast and southeast corners)
- o HSA-5B-14 (portion of 5B-14 within HSA-5A boundary)

Biologist Signature: [Signature]

Date: 17 Aug 2010

HGL Field Supervisor Signature: [Signature]

Date: 8-17-2010

Date: 8/23/10

Sheet 1 of 1

**BIOLOGICAL RESOURCE CLEARANCE SURVEY FORM**

**Work Area:** HSA-5A-17 (part)

**SURVEYS PERFORMED**

ID	Survey Type	Biologist	Expiration
1	Special-status species, suitable habitat, and nesting birds.	J. Anderson	MAR 1, 2011

**SURVEY FINDINGS**

ID	Protected Resources (130+)	Flagged (Y/N)	Applicable Avoidance and Minimization Measures
1	Santa Susana tarplant	Y	VL-10; GS-5
1	coast live oaks	N	Vegetation Management Protocols in HGL-SMP relevant to native oak trees.
	* In high density areas of tarplants, not all tarplants flagged.		

**NOTES AND RECOMMENDATIONS:**

- Remaining parts of 5A-17 surveyed that were not completed on August 17. Included northeastern and southeastern parts of the section as well as vertical wall <sup>in far west</sup>
- Monitoring biologist shall be present during vegetation clearance / gamma scanning or other project activities within 25ft of the Santa Susana tarplant.
- Coast live oaks - ~~pruning~~ pruning of lower branches 20% girth of main stem permitted only.
- Some poison oak in section

Biologist Signature: J. Anderson

Date: 8/31/10

HGL Field Supervisor Signature: Rich Speyer

Date: 9-1-10

Date: 8/23/10

Sheet 1 of 1

**BIOLOGICAL RESOURCE CLEARANCE SURVEY FORM**

Work Area: 5A-18

**SURVEYS PERFORMED**

ID	Survey Type	Biologist	Expiration
1	Special-status species, suitable habitat and nesting birds	J. Anderson	MAR 1, 2011

**SURVEY FINDINGS**

ID	Protected Resources	Flagged (Y/N)	Applicable Avoidance and Minimization Measures
1	Santa Susana tarplant (~25)	Y	VC-10; GS-5;
1	Coast live oaks	N	Vegetation Management Protocols in HGL-SMP relevant to oaks trees.

**NOTES AND RECOMMENDATIONS:**

- Monitoring biologist shall be present during veg clearance / gamma scanning or other project activities within 25 ft. of this ~~section~~ Santa Susana tarplant. The tarplant shall not be cut. See above ARMs.
- Coast live oaks - pruning of lower branches <20% girth of main stem permitted only.
- Monitoring biologist shall supervise vegetation clearance, gamma scanning using FIBS or mobile and other project activities involving light or heavy off-road vehicle use due to suitable habitats for coast horned lizard, silver cholla lizard, and San Diego desert woodrat (Species of Special Concern).  
Some poison oak in section.

Biologist Signature: J. Anderson

Date: 8/31/10

HGL Field Supervisor Signature: Keith Speyer

Date: 9-1-10

**BIOLOGICAL RESOURCE CLEARANCE SURVEY FORM**

Work Area: SA-19

**SURVEYS PERFORMED**

ID	Survey Type	Biologist	Expiration
1	Special-status species, suitable habitat and nesting birds	J. Anderson	MAR 1, 2011

**SURVEY FINDINGS**

ID	Protected Resources	Flagged (Y/N)	Applicable Avoidance and Minimization Measures
1	Coast live oaks	N	Vegetation Management Protocols HGL - SMP
1	Santa Susana tarplant	N	VC-10; AS-5
1	Dudleya (R20)	V	VC-9; Avoid impacts during all activities

**NOTES AND RECOMMENDATIONS:**

- Dudleya/Santa Susana tarplant - Monitoring biologist shall be present during vegetation clearance/gamma scanning and other project activities within 25ft of these species.
- Monitoring biologist shall be present during vegetation clearance, gamma scanning using ERGS or male and other project activities involving light or heavy off-road vehicle use due to suitable habitat for coast horned lizard, silvery cholla lizard, San Diego desert woodrat and coast patch nosed snake (Species of Special Concern).
- Dudleya - Some individuals within polygon on field map may not have been flagged. Avoid impacts species.
- Coast live oaks - pruning of lower branches 42% girth of main stem permitted only.
- Perline location shown in field map.
- Some possible oak within section.

Biologist Signature: [Signature]  
 HGL Field Supervisor Signature: [Signature]

Date: 8/31/10  
 Date: 9-1-10

Date: 8/26/10

Sheet 1 of 1

**BIOLOGICAL RESOURCE CLEARANCE SURVEY FORM**

Work Area: SA-20

**SURVEYS PERFORMED**

ID	Survey Type	Biologist	Expiration
1	Special-status, species, suitable habitat, and nesting birds	J. Anderson	Mar 1, 2011

**SURVEY FINDINGS**

ID	Protected Resources	Flagged (Y/N)	Applicable Avoidance and Minimization Measures
1	Coast live oaks	N	Vegetation Management Protocols in HGL-SMP relevant to native oak trees

**NOTES AND RECOMMENDATIONS:**

Coast live oaks - pruning of lower branches < 20%  
girth of main stem only.

Monitoring biologist shall supervise vegetation clearance, gamma scanning using ERGs or more and other project activities involving light or heavy off-road vehicle use due to suitable habitats for coast horned lizard, silver cholla lizard, San Diego desert woodrat and coast patch nosed snake (Species of Special Concern)

Photos  
925  
926  
927  
928  
929

Pinon oak in section.

Biologist Signature: J. Anderson

Date: 8/31/10

HGL Field Supervisor Signature: Mark Spiza

Date: 9-1-10



Date: 8/23/10

Sheet 1 of 1

**BIOLOGICAL RESOURCE CLEARANCE SURVEY FORM**

Work Area: 5A-21

**SURVEYS PERFORMED**

ID	Survey Type	Biologist	Expiration
1	Special-status Scitable habitat and nesting birds	J. Anderson	MAR 1, 2011

**SURVEY FINDINGS**

ID	Protected Resources	Flagged (Y/N)	Applicable Avoidance and Minimization Measures
1	Coast live oaks	N	Vegetation Management protocols related to native oak trees in HGL-SMP.

**NOTES AND RECOMMENDATIONS:**

No special-status species found in section.

Coast live oaks - pruning of lower branches <20% girth of main stem ~~per~~ only.

Monitoring biologist shall supervise vegetation clearance, gamma scanning using ERSS or mile and other project activities involving light or heavy off-road vehicle use due to suitable habitats for Coast horned lizard, silver chiseler lizard and San Diego desert woodrat (species of special concern).

Biologist Signature: [Signature]

Date: 8/31/10

HGL Field Supervisor Signature: [Signature]

Date: 9-1-10

Date: 8/23/10

Sheet 1 of 1

**BIOLOGICAL RESOURCE CLEARANCE SURVEY FORM**

Work Area: 5A - 22

**SURVEYS PERFORMED**

ID	Survey Type	Biologist	Expiration
1	Special-status species, suitable habitat and nesting birds	T. Anderson	MAR 1, 2011

**SURVEY FINDINGS**

ID	Protected Resources	Flagged (Y/N)	Applicable Avoidance and Minimization Measures
1	Coast live oaks	N	Vegetation Management Protocols in HOL-SMP relevant to native oak trees.

**NOTES AND RECOMMENDATIONS:**

Coast live oaks - ~~minimal~~ pruning of lower branches <20% girth of main stem only.

Monitoring biologist shall supervise vegetation clearance, gamma scanning using ERGS or mule and other project activities involving light or heavy off-road vehicle use due to suitable habitats for Coast horned lizard, Silver legless lizard, and San Diego desert woodrat (1 species) Special Concern.

Biologist Signature: [Signature]

Date: 8/23/10

HGL Field Supervisor Signature: [Signature]

Date: 9-1-10

Date: 8/23/10

Sheet 1 of 1

**BIOLOGICAL RESOURCE CLEARANCE SURVEY FORM**

Work Area: 5A-23

Tim SURVEYS PERFORMED

ID	Survey Type	Biologist	Expiration
1	Special-status species, suitable habitat nesting birds	J. Anderson	MAR 1, 2011

**SURVEY FINDINGS**

ID	Protected Resources	Flagged (Y/N)	Applicable Avoidance and Minimization Measures
1	Coast live oaks	N	Vegetation Management Protocols in HGL-SMP relevant to native oak trees.

**NOTES AND RECOMMENDATIONS:**

Coast live oaks - ~~minimal~~ pruning of lower branches < 20% girth at main stem only.

Monitoring biologist shall supervise vegetation clearance, gamma scanning using ERGS on mule and other project activities involving light or heavy off-road vehicle use due to suitable habitats for coast horned lizard, silver legless lizard and San Diego desert woodrat (species of special concern).

Biologist Signature: J. Anderson

Date: 8/31/10

HGL Field Supervisor Signature: Leah Speyer

Date: 9-1-10

**BIOLOGICAL RESOURCE CLEARANCE SURVEY FORM**

Work Area: 5D-51

**SURVEYS PERFORMED**

ID	Survey Type	Biologist	Expiration
1	Special status species and suitable habitat	J. Anderson	Feb 15, 2010

**SURVEY FINDINGS**

ID	Protected Resources	Flagged (Y/N)	Applicable Avoidance and Minimization Measures
1	Braunton's milkvetch	Y <sup>+</sup>	VC-3; GEN4; brush cutting <sup>hand</sup> <del>mechanical</del> (S only)
1	Malibu baccharis	Y <sup>+</sup>	Avoid impacts / minimize impacts
1	Coast live oak	N	HGL - Simp. Veg Management Protocols part
1	California black walnut	N	to trimming of native trees/ Country ne
1	Blue elderberry	N	Protect per Native American request - trim
	<del>Castroville</del>	<del>Y</del>	Under-tom branches only.
1	Coast horned lizard	—	Monitor present during veg clearing & ga

\* Only ~~part~~ of plants flagged, ~~rest were~~

**NOTES AND RECOMMENDATIONS:**

- Because of higher density of Braunton's milkvetch and Malibu Baccharis on upper slopes and ridge, two biological monitors may be needed during vegetation cutting in certain area (See approximate boundary on map). Monitor will need to work closely w/ crews to avoid impacts
- One monitor will be needed otherwise during veg cutting and impacts gamma scanning and other project activities due to above listed resources. b/c not all milkvetch/baccharis have been flagged; are potential for occurrence of protected state species of concern. Coast horned lizard and coast patch will snail and perhaps silver legless lizard.
- Coast horned lizard captured in SS-113 near section and moved off site outside area TV.
- Braunton's milkvetch common on upper slopes & ridge and occasional to sparse within woodland and lower slopes. Malibu baccharis appears confined to chaparral on upper slopes & ridge.
- Centaurea calcitrapa near road west end of section - Annul GEN-3 required because invasive species.
- Coast live oak common in coast live oak woodland on mid/lower north-facing slopes.

Biologist Signature: *[Signature]*

Date: 9/21/10

HGL Field Supervisor Signature: *[Signature]*

Date: 9-21-10

\* Both Braunton's milkvetch & Malibu Baccharis can be difficult to detect w/o characteristics and dry condition.

Santa Susana Field Laboratory Area IV And NBZ Radiological Study  
US EPA Region 9.

California black walnut common in coast live oak woodland. Trim per County ordinance guidelines.

Date: 9/20/10

Sheet 1 of 1

**BIOLOGICAL RESOURCE CLEARANCE SURVEY FORM**

Work Area: **50 - 58**

**SURVEYS PERFORMED**

ID	Survey Type	Biologist	Expiration
1	Special status species and suitable habitat	J. Anderson	Feb 15, 2010

**SURVEY FINDINGS**

ID	Protected Resources	Flagged (Y/N)	Applicable Avoidance and Minimization Measures
1	Braunton's milkvetch	Y#	GEN-4 VL-3; brush cutting hand
1	Malibu baccharis	Y#	Avoid / minimize impacts to this
1	Coast live oaks	N	HGL-SMP Vegetation Management
1	Calif. black walnut	N	Protocols pertaining to trimming
1	Blue elderberry	N	Protect Native American heritage
1	White sage	Y#	Protect Native American request
1	Coast horned lizard	—	Monitor present during veg clearance
1	Santa Susana Fanplant	Y#	VC10 GS-5

only  
species  
native  
trees  
request  
gamma  
scanning  
with EKOS  
mule.

Only a fraction of plants flagged.

**NOTES AND RECOMMENDATIONS:**

- Higher density of Braunton's milkvetch and Malibu baccharis on upper slopes and ridge; Two biological monitors may be needed during vegetation cutting in these areas (see approximate boundaries on map). Monitors will need to work closely with crews to avoid impacts.
- Otherwise one monitor needed during veg cutting and gamma scanning and other project activities due to above listed resources, because not all milkvetch/baccharis have been flagged; and potential for occurrence of protected state species of concern coast horned lizard and coast watch wood snake, as well as perhaps silver legless lizard.
- Coast horned lizard captured in SS-113 near section and moved outside Area IV.
- Braunton's milkvetch common on upper slopes and ridge in eastern portion of section, but otherwise ~~very~~ sparse to absent. Malibu baccharis common in chamise chaparral otherwise on coast sage scrub, otherwise absent.
- Coast live oak common within coast live oak woodland on lower/mid slopes.

Biologist Signature: [Signature]

Date: 9/20/10

HGL Field Supervisor Signature: [Signature]

Date: 9-21-10

55 Fanplants in eastern <sup>part of</sup> section near and on sandstone outcrops

Santa Susana Field Laboratory Area IV And NBZ Radiological Study

US EPA Region 9

Both Braunton's milkvetch and Malibu baccharis can be difficult to detect b/c of characteristics and dry conditions

**BIOLOGICAL RESOURCE CLEARANCE SURVEY FORM**

ENVICOM CORPORATION

<b>Survey Section (SS):</b> SS-50 (within 5D), 53, 54, 55 (entire), 109, 110, 111, 112 (within 5D)	<b>Area:</b> 5D, 8 (for SS-55)
<b>Biologist:</b> Scott Werner	<b>Date:</b> 9/17/2010
<b>Survey Type:</b> Special-status species and suitable habitats, nesting birds	<b>Expiration:</b> February 15, 2011

**SURVEY FINDINGS**

Survey Section	Protected Resources	Monitor needed?	Applicable Avoidance and Minimization Measures
SS-53	None	N	n/a GEN-3
SS-109	None	N	n/a
SS-110	None	N	n/a
SS-111	None	N	n/a
SS-112 (5D)	None	N	n/a
SS-54	None	N	n/a
SS-55	Protected Elderberry trees	N	Pg E-1: adhere to Ventura Co. Trimming Guidelines, additional protections possible per Native American guidelines

**NOTES AND RECOMMENDATIONS:**

SS-53, SS-109, SS-110, SS-111, and SS-112 consist of highly disturbed roads, roadsides, or parking lots and support no sensitive biological resources. SS-53 is a road shoulder with nonnative weedy vegetative cover. SS-109 is a paved parking lot. SS-110 and SS-111 are old overgrown dirt roads. SS-112 is a maintained dirt road.

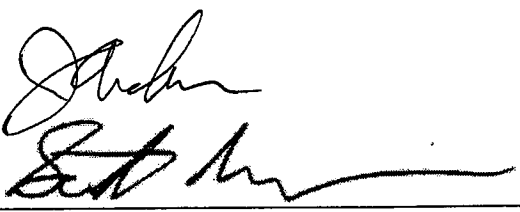
SS-54 consists of approximately 60% paved ground or buildings. The remaining 40% is recently mowed field covered by mostly nonnative vegetation dominated by field mustard (*Hirschfeldia incana*), bur clover (*Medicago* sp.), and grasses. Wildlife seen in the area included Say's phoebe (*Sayornis saya*), loggerhead shrike (*Lanius ludovicianus*), rock wren (*Salpinctes obsoletus*), and California ground squirrel (*Spermophilus beecheyi*) with many associated burrows.

SS-55 has similar weedy vegetation as SS-54 with a similar dominant species composition as described above. Invasive yellow star thistle (*Centaurea solstitialis*), localote (*Centaurea melitensis*), purple star-thistle (*Centaurea calcitrapa*), and milk thistle (*Silybum marianum*) are established on the plot. Two blue elderberries (*Sambucus mexicana*) located on the western portion of the Survey Section are protected under the Ventura County Tree Removal Ordinance and should not be removed. Two southern Pacific rattlesnakes (*Crotalus viridis helleri*) were located in a culvert at the northeastern corner of the Survey Section but only 1 snake was successfully removed. Other wildlife seen in the area included red-tailed hawk (*Buteo jamaicensis*), loggerhead shrike (*Lanius ludovicianus*), oak titmouse (*Baeolophus inornatus*), rock wren (*Salpinctes obsoletus*), California towhee (*Pipilo crissalis*), song sparrow (*Melospiza melodia*), lesser goldfinch (*Spinus psaltria*), and California ground squirrel (*Spermophilus beecheyi*) with many associated burrows. An old red-winged blackbird (*Agelaius phoeniceus*) nest was observed in a mustard patch.

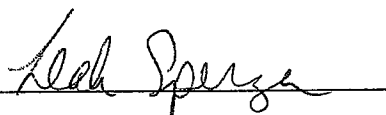
SS-56 also contains *Centaurea solstitialis*.  
AMM GEN-3 required also.

The loggerhead shrike seen on SS-54 and SS-55 did not exhibit any nesting behavior. Nesting loggerhead shrikes are a California Species of Special Concern (and are protected under the California Department of Fish and Game Code and the Federal Migratory Bird Treaty Act, like most other native birds found at SSFL).

Biological monitoring of project activities in these areas is currently not required due to the lack of special-status species or suitable habitats found. If work is to take place after February 15, 2010, additional surveys will be required to due the potential for nesting birds and special-status plant species associated with the spring growing season.

Biologist Signature: 

9/20/10  
Date: 9/17/2010

HGL Field Supervisor Signature: 

Date: 9-20-10

Date: 7/28/10

Sheet 1 of 1

BIOLOGICAL RESOURCE CLEARANCE SURVEY FORM

Terrain

Work Area: Equipment Test Area

Portion of SD-55

SURVEYS PERFORMED

ID	Survey Type	Biologist	Expiration
1	Special-status species, suitable habitat and nesting birds	J. Anderson	MAR 1, 2011 or following date that the testing whichever first.

burns clear, comes first.

SURVEY FINDINGS

ID	Protected Resources	Flagged (Y/N)	Applicable Avoidance and Minimization Measures
1	Critical Habitat ID for Brauntons milkvetch	N	<del>None required</del> None required
1	Potential coastal California gnatcatcher habitat	N	GEN-8 (implemented earlier in 2010) Absence confirmed by protocol surveys.

NOTES AND RECOMMENDATIONS:

Test area is within Critical Habitat Unit ID for Brauntons milkvetch. No Brauntons milkvetch or other special-status / sensitive biological resources were found in test area boundaries. All vegetation may be cut to 6-18".

Yellow-star thistle (Centauria solstitialis) occurs in testing area. This species is severely invasive and measure GEN-3 shall be implemented to prevent its spread to other areas within SSFL and beyond. Following work within the area, protect-related vehicles and equipment shall be cleaned before entering other natural habitat areas to prevent the potential spread of seeds.

Rattlesnake found near concrete debris in eastern portion of site - NOT REMOVED.

Portion of test area within area identified as potential habitat for coastal Calif gnatcatcher. Absence of this species has been verified by protocol surveys in 2010.

Biologist Signature: [Signature]

Date: 7/28/10

HGL Field Supervisor Signature: [Signature]

Date: 7/28/10



Date: 8/9/10

HSA-5D-56

Sheet 1 of 1

**BIOLOGICAL RESOURCE CLEARANCE SURVEY FORM**

Work Area: HSA-5D Geophysical Test Strips and Surrounding Area

**SURVEYS PERFORMED**

ID	Survey Type	Biologist	Expiration
1	Special-status species suitable habitat and nesting birds	J. Anderson	MAR 1, 2011

**SURVEY FINDINGS**

ID	Protected Resources	Flagged (Y/N)	Applicable Avoidance and Minimization Measures
1	Potential coastal California gnatcatcher habitat	N	GEN-8 (Implemented earlier in 2010). Absence confirmed by protocol surveys.
1	Critical habitat ID for Braunton's milkvetch	N	None required and no Braunton's milkvetch observed in survey area.

**NOTES AND RECOMMENDATIONS:**

- Purpose of survey to clear vicinity of geophysical test strips as well as areas of potential access to test strips. However, surrounding area surveyed as well. See attached map for survey extent.
- ~~Potential coastal Calif. gnatcatcher habitat in survey area, but not in near vicinity of~~
- Yellow-star thistle (*Centaurea solstitialis*) occurs within survey area. Because of the presence of this invasive species, gamma scanning and vegetation clearance occurs shall implement GEN-3. Geophysical survey crews do not need to implement GEN-3 provided vehicle access through vegetated areas is via the road along the western boundary of survey area, as this would avoid contact with the species.

Biologist Signature: [Signature]

Date: 8/9/10

HGL Field Supervisor Signature: [Signature]

Date: 8/13/10

Date: 8/9/10

Sheet 1 of 1

**BIOLOGICAL RESOURCE CLEARANCE SURVEY FORM**

**Work Area:** HSA-5D Geophysical Test Strips and Surrounding Area

**SURVEYS PERFORMED**

ID	Survey Type	Biologist	Expiration
1	Special-Status Species, Sensitive Habitat and nesting birds	J. Anderson	MAR 1, 2011

**SURVEY FINDINGS**

ID	Protected Resources	Flagged (Y/N)	Applicable Avoidance and Minimization Measures
1	Riparian coastal California gnatcatcher habitat	N	GEN-5 (Implemented earlier in 2010). Airbase confirmed by previous surveys.
1	Critical habitat ID for Brewer's milkvetch	N	None required. No Brewer's milkvetch observed in survey area.

**NOTES AND RECOMMENDATIONS:**

Proximity of survey to clear vicinity of geophysical test strips as well as areas of State Park access to test strips. However, surrounding area surveyed as well. See attached map for survey extent.

~~Identified critical habitat for riparian habitat in survey area, but~~  
~~no riparian vegetation observed.~~  
 Yellow star thistle (*Centaurea solstitialis*) occurs within survey area. Because of the presence of this invasive species, gamma scanning and vegetation clearance crews shall implement GEN-3. Geophysical survey crews do not need to implement GEN-3 around vehicle access through vegetated areas via the road along the western boundary of survey area as this would avoid contact with the species.

Biologist Signature: [Signature]

Date: 8/9/10

HGL Field Supervisor Signature: [Signature]

Date: 8/13/10



**BIOLOGICAL RESOURCE CLEARANCE SURVEY FORM**

*TERRAIN*

**Work Area:** ~~Equipment Test Area~~

**SURVEYS PERFORMED**

ID	Survey Type	Biologist	Expiration
1	potential sites of species, critical habitat and nesting birds	J. Anderson	7/28/10

**SURVEY FINDINGS**

ID	Protected Resources	Flagged (Y/N)	Applicable Avoidance and Minimization Measures
1	potential habitat ID	N	<del>None required</del> None required
1	Potential coastal Calif gnatcatcher habitat	N	GEW-8 (implemented earlier in 2000) Absence confirmed by protocol surveys.

**NOTES AND RECOMMENDATIONS:**

Test area is within Critical Habitat Unit ID for *Dumetia* ~~millivallid~~. No ~~resources~~ *resources* in ~~unit~~ *unit* ~~area~~ *area* ~~found~~ *found* ~~to~~ *to* ~~be~~ *be* ~~present~~ *present* ~~in~~ *in* ~~the~~ *the* ~~area~~ *area*.

One star thistle (*Centaurea solstitialis*) occurs in testing area. This species is ~~being~~ *being* ~~and~~ *and* ~~is~~ *is* ~~being~~ *being* ~~spread~~ *spread* ~~to~~ *to* ~~other~~ *other* ~~areas~~ *areas* ~~within~~ *within* ~~SSFL~~ *SSFL* ~~and~~ *and* ~~around~~ *around* ~~the~~ *the* ~~area~~ *area*. ~~Direct~~ *Direct* ~~related~~ *related* ~~vehicles~~ *vehicles* ~~and~~ *and* ~~equipment~~ *equipment* ~~shall~~ *shall* ~~be~~ *be* ~~cleaned~~ *cleaned* ~~before~~ *before* ~~leaving~~ *leaving* ~~other~~ *other* ~~critical~~ *critical* ~~habitat~~ *habitat* ~~areas~~ *areas* ~~to~~ *to* ~~prevent~~ *prevent* ~~the~~ *the* ~~potential~~ *potential* ~~spread~~ *spread* ~~of~~ *of* ~~seeds~~ *seeds*.

Household ~~found~~ *found* ~~near~~ *near* ~~concrete~~ *concrete* ~~debris~~ *debris* ~~in~~ *in* ~~eastern~~ *eastern* ~~portion~~ *portion* ~~of~~ *of* ~~site~~ *site* - ~~not~~ *not* ~~removed~~ *removed*.

Portion of test area within area identified as potential habitat for coastal California gnatcatcher. Absence of this species has been verified by protocol surveys earlier in 2000.

Biologist Signature: [Signature] Date: 7/28/10

HGL Field Supervisor Signature: \_\_\_\_\_ Date: \_\_\_\_\_

Date: 7/30/10

Sheet 1 of 1

**BIOLOGICAL RESOURCE CLEARANCE SURVEY FORM**

**Work Area:** FUEL CLEARANCE AROUND CORRAL NEAR B 204

**SURVEYS PERFORMED**

ID	Survey Type	Biologist	Expiration
1	Special-status species, suitable habitat, nesting birds	J. Anderson	MAY 1, 2011

**SURVEY FINDINGS**

ID	Protected Resources	Flagged (Y/N)	Applicable Avoidance and Minimization Measures
1	Dudleya sp. (3)	Y	VC-9
1	Santa Susana Tarplant (2)	Y	VC-10; <del>VC-9</del>
1	Coast Live Oaks	N	H.C-SMP Veg Management Protocols for oak trees

**NOTES AND RECOMMENDATIONS:**

Site is currently targeted for vegetation cutting - (fuel clearance) only. ~~Some~~ ~~lots~~ Above ground listed for vegetation clearance, additional ~~work~~ required if gamma scanning or other activities conducted in area. However, area is outside Area IV radiological study project area.

3 tarplants on rock outcrops not flagged - difficult to access.

Biologist Signature: [Signature]

Date: 7/30/10

HGL Field Supervisor Signature: [Signature]

Date: 7/30/10

**ATTACHMENT 2**  
**BIOLOGICAL MONITORING FORMS**

**BIOLOGICAL RESOURCE MONITORING FORM**

**ACTIVITIES MONITORED**

ID	Time	Area	Activities Monitored*	Equipment
1	9am-12:45pm	5C-8	<input checked="" type="checkbox"/> VC <input type="checkbox"/> GS <input type="checkbox"/> GP <input type="checkbox"/> SS <input type="checkbox"/> MWS <input type="checkbox"/> SWSS	weed whippers, vehicle mower
2	10am-12pm	5C-4	<input checked="" type="checkbox"/> VC <input type="checkbox"/> GS <input type="checkbox"/> GP <input type="checkbox"/> SS <input type="checkbox"/> MWS <input type="checkbox"/> SWSS	weed whippers
3	10am-12pm	5C-5	<input checked="" type="checkbox"/> VC <input type="checkbox"/> GS <input type="checkbox"/> GP <input type="checkbox"/> SS <input type="checkbox"/> MWS <input type="checkbox"/> SWSS	weed whippers, vehicle mower
			<input type="checkbox"/> VC <input type="checkbox"/> GS <input type="checkbox"/> GP <input type="checkbox"/> SS <input type="checkbox"/> MWS <input type="checkbox"/> SWSS	
			<input type="checkbox"/> VC <input type="checkbox"/> GS <input type="checkbox"/> GP <input type="checkbox"/> SS <input type="checkbox"/> MWS <input type="checkbox"/> SWSS	

skid loader  
skid loader

\* VC = Vegetation Clearing, GS = Gamma Scanning, GP = Geophysical Survey, SS = Soil Sampling, MWS = Monitor Well Sampling, SWSS = Surface Water and Sediment Sampling

**MONITORING RESULTS**

ID	Protected Resources Encountered	Area	AMM's Implemented	Residual Impacts
1	Santa Susana tarplant (3)	5C-8	Avoidance. Given wide berth	No impacts.
1	Potential suitable habitat for fairy shrimp	5C-8	Avoidance. Given wide berth.	No impacts.

**NOTES AND RECOMMENDATIONS:**

Santa Susana tarplants (3) at 5C-8 avoided. No vegetation cutting considered necessary within vicinity of tarplants to prepare for gamma scanning.

Potential habitat for Riverside and vernal pool fairy shrimp avoided as well. No vegetation cutting necessary within suitable habitat or vicinity to prepare for gamma scanning.

No protected resources encountered during vegetation cutting at 5C-4 or 5C-5.

Permission requested to cut some shrubs to less than 6 inches in height to allow fork-lift mounted scanner to pass without reduced risk of punctured tires. Granted provided cutting is done only to minimum extent necessary.

Biologist Signature: [Signature]

Date: 7/23/10

HGL Field Supervisor Signature: [Signature]

Date: 7/23/10

Date: 7/23/10

Sheet 1 of 1

**BIOLOGICAL RESOURCE MONITORING FORM**

**ACTIVITIES MONITORED**

ID	Time	Area	Activities Monitored*	Equipment
1	12:00pm - 4pm	5C-4	<input checked="" type="checkbox"/> VC <input type="checkbox"/> GS <input type="checkbox"/> GP <input type="checkbox"/> SS <input type="checkbox"/> MWS <input type="checkbox"/> SWSS	Weed wackers; vehicle mower
2	10am - 2pm	5C-1	<input checked="" type="checkbox"/> VC <input type="checkbox"/> GS <input type="checkbox"/> GP <input type="checkbox"/> SS <input type="checkbox"/> MWS <input type="checkbox"/> SWSS	Weed wackers
			<input type="checkbox"/> VC <input type="checkbox"/> GS <input type="checkbox"/> GP <input type="checkbox"/> SS <input type="checkbox"/> MWS <input type="checkbox"/> SWSS	
			<input type="checkbox"/> VC <input type="checkbox"/> GS <input type="checkbox"/> GP <input type="checkbox"/> SS <input type="checkbox"/> MWS <input type="checkbox"/> SWSS	
			<input type="checkbox"/> VC <input type="checkbox"/> GS <input type="checkbox"/> GP <input type="checkbox"/> SS <input type="checkbox"/> MWS <input type="checkbox"/> SWSS	

\* VC = Vegetation Clearing, GS = Gamma Scanning, GP = Geophysical Survey, SS = Soil Sampling, MWS = Monitor Well Sampling, SWSS = Surface Water and Sediment Sampling

**MONITORING RESULTS**

ID	Protected Resources Encountered	Area	AMM's Implemented	Residual Impacts
1	Dudleya sp (2)	5C-4	Avoided VC-9	No impacts
1	Coast live oaks	5C-4	Vegetation Management Protocols HGL-SMP	No impacts per Ventura County Tree Protection ordinance -
2	None encountered	5C-1		Two (2) seedlings cut to 6-18 in.

**NOTES AND RECOMMENDATIONS:**

Two coast live oak seedlings cut to 6-18 inches; saplings and adult trees only understory branches less than 20% diameter of main trunk cut, as necessary to allow easier access beneath canopy for gamma scanning.

Biologist Signature: [Signature]

Date: 7/23/10

HGL Field Supervisor Signature: [Signature]

Date: 7/23/10



**BIOLOGICAL RESOURCE MONITORING FORM**

**ACTIVITIES MONITORED**

ID	Time	Area	Activities Monitored*	Equipment
1	8am - 2pm	5C-1	<input checked="" type="checkbox"/> VC <input type="checkbox"/> GS <input type="checkbox"/> GP <input type="checkbox"/> SS <input type="checkbox"/> MWS <input type="checkbox"/> SWSS <input type="checkbox"/> VC <input type="checkbox"/> GS <input type="checkbox"/> GP <input type="checkbox"/> SS <input type="checkbox"/> MWS <input type="checkbox"/> SWSS <input type="checkbox"/> VC <input type="checkbox"/> GS <input type="checkbox"/> GP <input type="checkbox"/> SS <input type="checkbox"/> MWS <input type="checkbox"/> SWSS <input type="checkbox"/> VC <input type="checkbox"/> GS <input type="checkbox"/> GP <input type="checkbox"/> SS <input type="checkbox"/> MWS <input type="checkbox"/> SWSS <input type="checkbox"/> VC <input type="checkbox"/> GS <input type="checkbox"/> GP <input type="checkbox"/> SS <input type="checkbox"/> MWS <input type="checkbox"/> SWSS	Weed whippers; vehicle monitor

\* VC = Vegetation Clearing, GS = Gamma Scanning, GP = Geophysical Survey, SS = Soil Sampling, MWS = Monitor Well Sampling, SWSS = Surface Water and Sediment Sampling

**MONITORING RESULTS**

ID	Protected Resources Encountered	Area	AMM's Implemented	Residual Impacts
1	Riparian, dry eph. drainages	5C-1	Riparian Protection Measures	Some understory; lower branches of shrubs, trees removed/cut

**NOTES AND RECOMMENDATIONS:**

Native shrubs/trees in and adjacent to drainages only understory and lateral branches cut and dead wood removed. Non-native herb cover in drainages cut to 6-18". Native trees/shrubs Areas outside drainages cut to 6-18".

Biologist Signature: Jahh  
 HGL Field Supervisor Signature: Leah Speizer

Date: 7/26/10  
 Date: 7/26/10

Date: 7/27/10

Sheet 1 of 1

**BIOLOGICAL RESOURCE MONITORING FORM**

**ACTIVITIES MONITORED**

ID	Time	Area	Activities Monitored*	Equipment
1	800-930	5C-1	<input checked="" type="checkbox"/> VC <input type="checkbox"/> GS <input type="checkbox"/> GP <input type="checkbox"/> SS <input type="checkbox"/> MWS <input type="checkbox"/> SWSS	weed whippers, chipper
2	930-1030	5C-8	<input type="checkbox"/> VC <input checked="" type="checkbox"/> GS <input type="checkbox"/> GP <input type="checkbox"/> SS <input type="checkbox"/> MWS <input type="checkbox"/> SWSS	Stroller
3	1030-1100 200	5C-1	<input checked="" type="checkbox"/> VC <input type="checkbox"/> GS <input type="checkbox"/> GP <input type="checkbox"/> SS <input type="checkbox"/> MWS <input type="checkbox"/> SWSS	weed whippers, chipper
			<input type="checkbox"/> VC <input type="checkbox"/> GS <input type="checkbox"/> GP <input type="checkbox"/> SS <input type="checkbox"/> MWS <input type="checkbox"/> SWSS	
			<input type="checkbox"/> VC <input type="checkbox"/> GS <input type="checkbox"/> GP <input type="checkbox"/> SS <input type="checkbox"/> MWS <input type="checkbox"/> SWSS	

\* VC = Vegetation Clearing, GS = Gamma Scanning, GP = Geophysical Survey, SS = Soil Sampling, MWS = Monitor Well Sampling, SWSS = Surface Water and Sediment Sampling

**MONITORING RESULTS**

ID	Protected Resources Encountered	Area	AMM's Implemented	Residual Impacts
1	Riparian-dry ephemeral creek	5C-1	Riparian Habitat AMMS HOL-SMP pgs N-1 to N-3	Lower branches of <sup>native</sup> riparian shrubs / trees cut to allow
2	Potential suitable habitat for vesper sparrow	5C-8	<del>GS-3</del> GS-3;	No impact
2	Santa Susana Tarplant	5C-8	GS-5	No impact

use of gamma scan

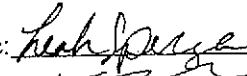
**NOTES AND RECOMMENDATIONS:**

Area of seasonal pooling of water in section 8 scanned with stroller. Only one person entered area to minimize soil disturbance. ~~Red~~ Area is thoroughly dry and, therefore, scanning conducted during dry phase. No vegetation was cut within this area.

Also monitored vegetation cutting in section 1. ~~Some~~ Native shrubs & trees within and adjacent to creek were thinned only, with understory and lateral branches cut and canopy retained.

Biologist Signature: 

Date: 7/27/10

HGL Field Supervisor Signature:   
HGL Field Sup. <sup>veg clearance</sup> <sub>Gamma scanning</sub>

Date: 7/27/10

Date: 8.2.10



Date: 7/27/10

Sheet 1 of 1

**BIOLOGICAL RESOURCE MONITORING FORM**

**ACTIVITIES MONITORED**

ID	Time	Area	Activities Monitored*	Equipment
1		SC-7	<input type="checkbox"/> VC <input checked="" type="checkbox"/> GS <input type="checkbox"/> GP <input type="checkbox"/> SS <input type="checkbox"/> MWS <input type="checkbox"/> SWSS	Mule
			<input type="checkbox"/> VC <input type="checkbox"/> GS <input type="checkbox"/> GP <input type="checkbox"/> SS <input type="checkbox"/> MWS <input type="checkbox"/> SWSS	
			<input type="checkbox"/> VC <input type="checkbox"/> GS <input type="checkbox"/> GP <input type="checkbox"/> SS <input type="checkbox"/> MWS <input type="checkbox"/> SWSS	
			<input type="checkbox"/> VC <input type="checkbox"/> GS <input type="checkbox"/> GP <input type="checkbox"/> SS <input type="checkbox"/> MWS <input type="checkbox"/> SWSS	
			<input type="checkbox"/> VC <input type="checkbox"/> GS <input type="checkbox"/> GP <input type="checkbox"/> SS <input type="checkbox"/> MWS <input type="checkbox"/> SWSS	

\* VC = Vegetation Clearing, GS = Gamma Scanning, GP = Geophysical Survey, SS = Soil Sampling, MWS = Monitor Well Sampling, SWSS = Surface Water and Sediment Sampling

**MONITORING RESULTS**

ID	Protected Resources Encountered	Area	AMM's Implemented	Residual Impacts
1	Santa Susana tongueplant	SC-7	GS-1, GS-2, GS-5	No impact
1	Botanical herbarium for Vernal pool branchiopods	SC-7	NONE	Minor soil disturbance. Take" herbium but not res. protected;

**NOTES AND RECOMMENDATIONS:**

The mule was allowed to pass through area demarcated as potential suitable habitat for vernal pool branchiopods without discussion with monitoring biologist. Resulted in ~~minor~~ minor amount of soil disturbance within a small portion of the demarcated area. This occurred when the pool was in the dry phase.

This was unsatisfactory implementation of avoidance/minimization measure 55-3. Activities shall only be conducted on 4ft, and only activities that do not disturb fauna or soil structure will be permitted. Use of a mule in this area is considered to have potential negative effect due to disturbance of soil.

Common occurring personnel were reminded to consult with biologist prior to entering or conducting activities within demarcated areas. Personnel and field biologist were advised to avoid activities in these areas.

If these areas were not to be available based on vernal pool, permit, or other factors, the biologist should be notified immediately. The biologist should be notified immediately if any changes to the permit or other factors occur.

Biologist Signature: [Signature]

Date: 8/2/10

HGL Field Supervisor Signature: [Signature]

Date: 8.2.10

**BIOLOGICAL RESOURCE MONITORING FORM**

**ACTIVITIES MONITORED**

ID	Time	Area	Activities Monitored*	Equipment
/	200-300	5C-7	<input type="checkbox"/> VC <input checked="" type="checkbox"/> GS <input type="checkbox"/> GP <input type="checkbox"/> SS <input type="checkbox"/> MWS <input type="checkbox"/> SWSS	Mule
			<input type="checkbox"/> VC <input type="checkbox"/> GS <input type="checkbox"/> GP <input type="checkbox"/> SS <input type="checkbox"/> MWS <input type="checkbox"/> SWSS	
			<input type="checkbox"/> VC <input type="checkbox"/> GS <input type="checkbox"/> GP <input type="checkbox"/> SS <input type="checkbox"/> MWS <input type="checkbox"/> SWSS	
			<input type="checkbox"/> VC <input type="checkbox"/> GS <input type="checkbox"/> GP <input type="checkbox"/> SS <input type="checkbox"/> MWS <input type="checkbox"/> SWSS	
			<input type="checkbox"/> VC <input type="checkbox"/> GS <input type="checkbox"/> GP <input type="checkbox"/> SS <input type="checkbox"/> MWS <input type="checkbox"/> SWSS	

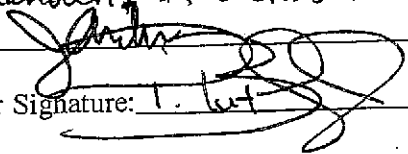
\* VC = Vegetation Clearing, GS = Gamma Scanning, GP = Geophysical Survey, SS = Soil Sampling, MWS = Monitor Well Sampling, SWSS = Surface Water and Sediment Sampling


**MONITORING RESULTS**

ID	Protected Resources Encountered	Area	AMM's Implemented	Residual Impacts
1	Santa Susana tarplant	5C-7	GS-1; GS-2; GS-5	No impact
1	Potential habitat for vernal pool branched pods	5C-7	NONE	Minor soil disturbance. "take" unknown, but not suspected.

**NOTES AND RECOMMENDATIONS:**

- The mule was allowed to pass through area demarcated as potential suitable habitat for vernal pool branched pods without discussion with monitoring biologist. Resulted in ~~minor~~ minor amount of soil disturbance within a small portion of the demarcated area. This occurred when the pool was in the dry phase.
- This was unsatisfactory implementation of Avoidance/Minimization Measure GS-3: "surveys shall only be conducted on foot, and only activities that do not disturb biota or soil structure will be permitted." use of a mule in this area is considered to have potential negative effects due to disturbance of soil.
- Gamma scanning personnel were reminded to consult with biologist prior to entering or conducting activities within demarcated areas ~~and that biologist must be present during any activities in these areas.~~
- If take occurred would not be a violation, based on USFWS incidental take permit.
- As protocol surveys have not been conducted for vernal pool branched pods, the presence/absence of fairy shrimp is unknown. If encroachment resulted in take of eggs/cysts is unknown, but due to minimal disturbance is not expected.

Biologist Signature: 

HGL Field Supervisor Signature: 

Date: 8/2/10

Date: 8.2.10

Date: 7/27/10

Sheet 1 of 1

**BIOLOGICAL RESOURCE MONITORING FORM**

**ACTIVITIES MONITORED**

ID	Time	Area	Activities Monitored*	Equipment
1	7-27-10	SC-7	<input type="checkbox"/> VC <input checked="" type="checkbox"/> GS <input type="checkbox"/> GP <input type="checkbox"/> SS <input type="checkbox"/> MWS <input type="checkbox"/> SWSS	MTC
2	7/25-30	SC-7	<input checked="" type="checkbox"/> VC <input type="checkbox"/> GS <input type="checkbox"/> GP <input type="checkbox"/> SS <input type="checkbox"/> MWS <input type="checkbox"/> SWSS	Used chainsaw, chain saw, chipper
			<input type="checkbox"/> VC <input type="checkbox"/> GS <input type="checkbox"/> GP <input type="checkbox"/> SS <input type="checkbox"/> MWS <input type="checkbox"/> SWSS	
			<input type="checkbox"/> VC <input type="checkbox"/> GS <input type="checkbox"/> GP <input type="checkbox"/> SS <input type="checkbox"/> MWS <input type="checkbox"/> SWSS	
			<input type="checkbox"/> VC <input type="checkbox"/> GS <input type="checkbox"/> GP <input type="checkbox"/> SS <input type="checkbox"/> MWS <input type="checkbox"/> SWSS	

\* VC = Vegetation Clearing, GS = Gamma Scanning, GP = Geophysical Survey, SS = Soil Sampling, MWS = Monitor Well Sampling, SWSS = Surface Water and Sediment Sampling

**MONITORING RESULTS**

ID	Protected Resources Encountered	Area	AMM's Implemented	Residual Impacts
1	Santa Susana Tapplant	SC-7	GS-1, 64-2; GS-5	No impact
2	... in ... tapplant	Fuel tank corral	VC-1	No impact
3	Dudleya sp.	Fuel tank corral	VC-7	No impact
4	... ..	Fuel tank corral	...	...

**NOTES AND RECOMMENDATIONS:**

Fuel modification ~~...~~ male/horse corral near Building 214. This is outside Area IV and not ~~...~~ to be scanned as a part of the Area IV Biological Project.

Biologist Signature: [Signature]  
 HGL Field Supervisor Signature: [Signature]

Date: 7/30/10  
 Date: 8.2.10

Date: 8/2/10

Sheet 1 of 1

**BIOLOGICAL RESOURCE MONITORING FORM**

**ACTIVITIES MONITORED**

ID	Time	Area	Activities Monitored*	Equipment
1	1015-2.00	5C-1	<input type="checkbox"/> VC <input checked="" type="checkbox"/> GS <input type="checkbox"/> GP <input type="checkbox"/> SS <input type="checkbox"/> MWS <input type="checkbox"/> SWSS <input type="checkbox"/> VC <input type="checkbox"/> GS <input type="checkbox"/> GP <input type="checkbox"/> SS <input type="checkbox"/> MWS <input type="checkbox"/> SWSS <input type="checkbox"/> VC <input type="checkbox"/> GS <input type="checkbox"/> GP <input type="checkbox"/> SS <input type="checkbox"/> MWS <input type="checkbox"/> SWSS <input type="checkbox"/> VC <input type="checkbox"/> GS <input type="checkbox"/> GP <input type="checkbox"/> SS <input type="checkbox"/> MWS <input type="checkbox"/> SWSS <input type="checkbox"/> VC <input type="checkbox"/> GS <input type="checkbox"/> GP <input type="checkbox"/> SS <input type="checkbox"/> MWS <input type="checkbox"/> SWSS	Ergs # Forklift mounted scanner

\* VC = Vegetation Clearing, GS = Gamma Scanning, GP = Geophysical Survey, SS = Soil Sampling, MWS = Monitor Well Sampling, SWSS = Surface Water and Sediment Sampling

**MONITORING RESULTS**

ID	Protected Resources Encountered	Area	AMM's Implemented	Residual Impacts
1	Riparian drainage/ riparian veg.	5C-1	Avoidance Buffer from banks - Riparian protection measures HGL-Smp pgs N-1 to N-3	No impact

**NOTES AND RECOMMENDATIONS:**

Ergs used for gamma scanning in areas of 5C-1 outside of ditches and riparian vegetation. Ditches given 5' ft buffer by vegetation in riparian veg. adjacent to drainage - or under if necessary. Ditches and riparian veg will be scanned w/ scanner/cant and hand scanner at later time.

Biologist Signature: [Signature]

Date: 8/2/10

HGL Field Supervisor Signature: [Signature]

Date: 8.2.10







Date: 8/13/10

Sheet 1 of 1

**BIOLOGICAL RESOURCE MONITORING FORM**

**ACTIVITIES MONITORED**

ID	Time	Area	Activities Monitored*	Equipment
1	1000-1230	5C-1	<input type="checkbox"/> VC <input checked="" type="checkbox"/> GS <input type="checkbox"/> GP <input type="checkbox"/> SS <input type="checkbox"/> MWS <input type="checkbox"/> SWSS	Mule
			<input type="checkbox"/> VC <input type="checkbox"/> GS <input type="checkbox"/> GP <input type="checkbox"/> SS <input type="checkbox"/> MWS <input type="checkbox"/> SWSS	
			<input type="checkbox"/> VC <input type="checkbox"/> GS <input type="checkbox"/> GP <input type="checkbox"/> SS <input type="checkbox"/> MWS <input type="checkbox"/> SWSS	
			<input type="checkbox"/> VC <input type="checkbox"/> GS <input type="checkbox"/> GP <input type="checkbox"/> SS <input type="checkbox"/> MWS <input type="checkbox"/> SWSS	
			<input type="checkbox"/> VC <input type="checkbox"/> GS <input type="checkbox"/> GP <input type="checkbox"/> SS <input type="checkbox"/> MWS <input type="checkbox"/> SWSS	

\* VC = Vegetation Clearing, GS = Gamma Scanning, GP = Geophysical Survey, SS = Soil Sampling, MWS = Monitor Well Sampling, SWSS = Surface Water and Sediment Sampling

**MONITORING RESULTS**

ID	Protected Resources Encountered	Area	AMM's Implemented	Residual Impacts
1	Epiphytic drainages and riparian vegetation	5C-1	Riparian Protective measures, Hot-Smipignition	Breakage of a small number of stems <del>on</del> riparian shrubs but minimal impact with loss of <del>individual</del> individual shrubs.

**NOTES AND RECOMMENDATIONS:**

Mule was a viable option for gamma scanning in riparian veg / drainages - ~~with~~ minimal impact. Riparian vegetation was held aside in ~~some~~ cases by the monitor and other crew to avoid impacts as the mule passed. In one case, ~~the~~ upright stems of one muleat shrub were cut to allow passage of mule within drainage bottom. Mule exited & entered drainage where banks were low gradient, whenever possible. Result was ~~with~~ loss of a few stems of a few riparian shrubs as mule passed, ~~with the~~ but did not result in loss of ~~shrubs~~ any individual native species.

Biologist Signature: J. Helm  
 HGL Field Supervisor Signature: Leah Spry

Date: 8/13/10  
 Date: 8/17/10



Date: 8/16/2010

Sheet 1 of 1

**BIOLOGICAL RESOURCE MONITORING FORM**

**ACTIVITIES MONITORED**

ID	Time	Area	Activities Monitored*	Equipment
1	0800-130	5B-9	<input checked="" type="checkbox"/> VC <input type="checkbox"/> GS <input type="checkbox"/> GP <input type="checkbox"/> SS <input type="checkbox"/> MWS <input type="checkbox"/> SWSS	loggers, weed whackers, skid steer
2	0800-130	5B-10	<input checked="" type="checkbox"/> VC <input type="checkbox"/> GS <input type="checkbox"/> GP <input type="checkbox"/> SS <input type="checkbox"/> MWS <input type="checkbox"/> SWSS	loggers, weed whackers, skid steer
			<input type="checkbox"/> VC <input type="checkbox"/> GS <input type="checkbox"/> GP <input type="checkbox"/> SS <input type="checkbox"/> MWS <input type="checkbox"/> SWSS	
			<input type="checkbox"/> VC <input type="checkbox"/> GS <input type="checkbox"/> GP <input type="checkbox"/> SS <input type="checkbox"/> MWS <input type="checkbox"/> SWSS	
			<input type="checkbox"/> VC <input type="checkbox"/> GS <input type="checkbox"/> GP <input type="checkbox"/> SS <input type="checkbox"/> MWS <input type="checkbox"/> SWSS	

know  
up/down  
and change  
for oak

\* VC = Vegetation Clearing, GS = Gamma Scanning, GP = Geophysical Survey, SS = Soil Sampling, MWS = Monitor Well Sampling, SWSS = Surface Water and Sediment Sampling

**MONITORING RESULTS**

ID	Protected Resources Encountered	Area	AMM's Implemented	Residual Impacts
1	Tarplant	5B-9	Protective measures on G-46, 47. Avoided	Avoided - Grass around it trimmed
2	Tarplant, Brantons oaks	5B-10	Pgs G-4, 5, G 46-47 E-2	Oak - low branches < 70%. <del>trimmed</del> Tarplant and astragalus avoided

Trimmed

**NOTES AND RECOMMENDATIONS:**

All tarplant and Brantons astragalus were avoided.  
 Young oaks at site were fenced and avoided  
 Mature oak in center of 5B-10 required trimming of low branches to allow access to canopy. Limbs were < 70% of trunk dbh.

Biologist Signature: [Signature]  
 HGL Field Supervisor Signature: [Signature]

Date: 8/16/10  
 Date: 8/18/10

Date: 9/7/10

Sheet 1 of 1

**BIOLOGICAL RESOURCE MONITORING FORM**

**ACTIVITIES MONITORED**

ID	Time	Area	Activities Monitored*	Equipment
1	800-1730	5A-17	<input checked="" type="checkbox"/> VC <input type="checkbox"/> GS <input type="checkbox"/> GP <input type="checkbox"/> SS <input type="checkbox"/> MWS <input type="checkbox"/> SWSS	chippers, loppers chainsaw, weed wacker
2	1400-1720	5A-19	<input checked="" type="checkbox"/> VC <input type="checkbox"/> GS <input type="checkbox"/> GP <input type="checkbox"/> SS <input type="checkbox"/> MWS <input type="checkbox"/> SWSS	Loppers, backhoe
			<input type="checkbox"/> VC <input type="checkbox"/> GS <input type="checkbox"/> GP <input type="checkbox"/> SS <input type="checkbox"/> MWS <input type="checkbox"/> SWSS	
			<input type="checkbox"/> VC <input type="checkbox"/> GS <input type="checkbox"/> GP <input type="checkbox"/> SS <input type="checkbox"/> MWS <input type="checkbox"/> SWSS	
			<input type="checkbox"/> VC <input type="checkbox"/> GS <input type="checkbox"/> GP <input type="checkbox"/> SS <input type="checkbox"/> MWS <input type="checkbox"/> SWSS	

\* VC = Vegetation Clearing, GS = Gamma Scanning, GP = Geophysical Survey, SS = Soil Sampling, MWS = Monitor Well Sampling, SWSS = Surface Water and Sediment Sampling

**MONITORING RESULTS**

ID	Protected Resources Encountered	Area	AMM's Implemented	Residual Impacts
1	Tarplant, Woodrat, Dudley's houses	5A-17	Flagged, avoided	Intact
2	none	5A-19	n/a	-

**NOTES AND RECOMMENDATIONS:**

Done with 5A-17 VC.

5A-17 Bird spp observed: canyon wren, common raven, California towhee, rock wren, oak titmouse, bewick's wren.

5A-19 Birds: spotted towhee, oak titmouse

Biologist Signature: [Signature]

Date: 9/7/10

HGL Field Supervisor Signature: [Signature]

Date: 9-7-10

Date: 8/27/10

Sheet 1 of 1

**BIOLOGICAL RESOURCE MONITORING FORM**

**ACTIVITIES MONITORED**

ID	Time	Area	Activities Monitored*	Equipment
1	800-900	5A-16	<input checked="" type="checkbox"/> VC <input type="checkbox"/> GS <input type="checkbox"/> GP <input type="checkbox"/> SS <input type="checkbox"/> MWS <input type="checkbox"/> SWSS	chipper
2	800-300	5A-17	<input checked="" type="checkbox"/> VC <input type="checkbox"/> GS <input type="checkbox"/> GP <input type="checkbox"/> SS <input type="checkbox"/> MWS <input type="checkbox"/> SWSS	weed whacker, loppers, chainsaw, etc.
3	910-930	5A-15	<input type="checkbox"/> VC <input checked="" type="checkbox"/> GS <input type="checkbox"/> GP <input type="checkbox"/> SS <input type="checkbox"/> MWS <input type="checkbox"/> SWSS	mule
			<input type="checkbox"/> VC <input type="checkbox"/> GS <input type="checkbox"/> GP <input type="checkbox"/> SS <input type="checkbox"/> MWS <input type="checkbox"/> SWSS	
			<input type="checkbox"/> VC <input type="checkbox"/> GS <input type="checkbox"/> GP <input type="checkbox"/> SS <input type="checkbox"/> MWS <input type="checkbox"/> SWSS	

\* VC = Vegetation Clearing, GS = Gamma Scanning, GP = Geophysical Survey, SS = Soil Sampling, MWS = Monitor Well Sampling, SWSS = Surface Water and Sediment Sampling

**MONITORING RESULTS**

ID	Protected Resources Encountered	Area	AMM's Implemented	Residual Impacts
1	<del>Woodrat</del> Woodrat middens	5A-16	Avoided	Cover reduced.
2	Tarplant, oak's woodrat nests/middens	5A-17	Tarplant avoided, oaks left standing	Cover reduced, tarplant avoided.
3	Tarplant	5A-15	Monitor present, tarplant avoided	None.

**NOTES AND RECOMMENDATIONS:**

Breared woodrat encountered, had chipper avoid it today. Rat was fairly exposed under summer stamps.

---



---



---



---



---



---



---



---



---



---

Biologist Signature: [Signature]  
 HGL Field Supervisor Signature: [Signature]

Date: 8/27/10  
 Date: 8/27/10

Date: 8/26/10

Sheet 1 of 1

**BIOLOGICAL RESOURCE MONITORING FORM**

**ACTIVITIES MONITORED**

ID	Time	Area	Activities Monitored*	Equipment
1	800-300	17	<input checked="" type="checkbox"/> VC <input type="checkbox"/> GS <input type="checkbox"/> GP <input type="checkbox"/> SS <input type="checkbox"/> MWS <input type="checkbox"/> SWSS	<del>Chipped</del> used whittaker logger, chipped
2	900-300	16	<input checked="" type="checkbox"/> VC <input type="checkbox"/> GS <input type="checkbox"/> GP <input type="checkbox"/> SS <input type="checkbox"/> MWS <input type="checkbox"/> SWSS	Chipped
3	1315-1345	5C-7	<input type="checkbox"/> VC <input checked="" type="checkbox"/> GS <input type="checkbox"/> GP <input type="checkbox"/> SS <input type="checkbox"/> MWS <input type="checkbox"/> SWSS	ERGS
			<input type="checkbox"/> VC <input type="checkbox"/> GS <input type="checkbox"/> GP <input type="checkbox"/> SS <input type="checkbox"/> MWS <input type="checkbox"/> SWSS	
			<input type="checkbox"/> VC <input type="checkbox"/> GS <input type="checkbox"/> GP <input type="checkbox"/> SS <input type="checkbox"/> MWS <input type="checkbox"/> SWSS	

\* VC = Vegetation Clearing, GS = Gamma Scanning, GP = Geophysical Survey, SS = Soil Sampling, MWS = Monitor Well Sampling, SWSS = Surface Water and Sediment Sampling

**MONITORING RESULTS**

ID	Protected Resources Encountered	Area	AMM's Implemented	Residual Impacts
2	<del>tarplant</del> , oaks, woodrat nests	16	Oak trimming guidelines, woodrat nests left intact	
1	Woodrat nests, oak acorns, tarplant	17	Tarplant avoided	1 tarplant (small) heavily damaged.
3	Vernal pool	5C-7	No entry into pool.	None

**NOTES AND RECOMMENDATIONS:**

① Rattlesnake removed by Pinkerton. Area on 17 already cut, tarplant present, no monitor present. Large tracks - possibly ERGS went through here.

Photos 940-941

② None

Photos 942-943

③ Supplemental scanning of 'vernal pool' required. ERGS extended boom over wetland without drain into wetland. Lowered scanner to 3-4 inches above ground. No impacts to wetland.

Photos 936-939

Biologist Signature: \_\_\_\_\_

*[Signature]*

Date: 8/26/10

HGL Field Supervisor Signature: \_\_\_\_\_

*[Signature]*

Date: 8/26/10

Date: 9/2/2010

Sheet 1 of 1

**BIOLOGICAL RESOURCE MONITORING FORM**

**ACTIVITIES MONITORED**

ID	Time	Area	Activities Monitored*	Equipment
1	800-300	SA-17	<input checked="" type="checkbox"/> VC <input type="checkbox"/> GS <input type="checkbox"/> GP <input type="checkbox"/> SS <input type="checkbox"/> MWS <input type="checkbox"/> SWSS	Flots: weed wacker chainsaw lopper, chipper, mower
2	800-300	SA-18	<input checked="" type="checkbox"/> VC <input type="checkbox"/> GS <input type="checkbox"/> GP <input type="checkbox"/> SS <input type="checkbox"/> MWS <input type="checkbox"/> SWSS	
			<input type="checkbox"/> VC <input type="checkbox"/> GS <input type="checkbox"/> GP <input type="checkbox"/> SS <input type="checkbox"/> MWS <input type="checkbox"/> SWSS	
			<input type="checkbox"/> VC <input type="checkbox"/> GS <input type="checkbox"/> GP <input type="checkbox"/> SS <input type="checkbox"/> MWS <input type="checkbox"/> SWSS	

\* VC = Vegetation Clearing, GS = Gamma Scanning, GP = Geophysical Survey, SS = Soil Sampling, MWS = Monitor Well Sampling, SWSS = Surface Water and Sediment Sampling

**MONITORING RESULTS**

ID	Protected Resources Encountered	Area	AMM's Implemented	Residual Impacts
1/2	SS tree plant oaks, woodrat middens	SA-17 SA-18	Tree plants avoided, monitored Middens avoided, oaks protected	None

**NOTES AND RECOMMENDATIONS:**

Mower used in flat brushy areas - no apparent wildlife mortality.

Dead rabbit found at edge of section - neck wound appears to be from predator and not from project activities.

Biologist Signature: [Signature]

Date: 9/2/10

HGL Field Supervisor Signature: [Signature]

Date: 9/3/10



Date: 9/1/10

Sheet 1 of 1

**BIOLOGICAL RESOURCE MONITORING FORM**

**ACTIVITIES MONITORED**

ID	Time	Area	Activities Monitored*	Equipment
1	800-300	SA-17	<input checked="" type="checkbox"/> VC <input type="checkbox"/> GS <input type="checkbox"/> GP <input type="checkbox"/> SS <input type="checkbox"/> MWS <input type="checkbox"/> SWSS	weed whackers, lopper, chainsaw, chainsaw,
			<input type="checkbox"/> VC <input type="checkbox"/> GS <input type="checkbox"/> GP <input type="checkbox"/> SS <input type="checkbox"/> MWS <input type="checkbox"/> SWSS	
			<input type="checkbox"/> VC <input type="checkbox"/> GS <input type="checkbox"/> GP <input type="checkbox"/> SS <input type="checkbox"/> MWS <input type="checkbox"/> SWSS	
			<input type="checkbox"/> VC <input type="checkbox"/> GS <input type="checkbox"/> GP <input type="checkbox"/> SS <input type="checkbox"/> MWS <input type="checkbox"/> SWSS	
			<input type="checkbox"/> VC <input type="checkbox"/> GS <input type="checkbox"/> GP <input type="checkbox"/> SS <input type="checkbox"/> MWS <input type="checkbox"/> SWSS	

\* VC = Vegetation Clearing, GS = Gamma Scanning, GP = Geophysical Survey, SS = Soil Sampling, MWS = Monitor Well Sampling, SWSS = Surface Water and Sediment Sampling

**MONITORING RESULTS**

ID	Protected Resources Encountered	Area	AMM's Implemented	Residual Impacts
1	Tarplant, oaks, woodrat middens	SA-17	Monitored, avoided, oaks trimmed to Vtaro. Reg's	Some loss of cover for woodrat middens.

**NOTES AND RECOMMENDATIONS:**

Crew is doing an excellent job avoiding tarplant and working with other resource issues.

---



---



---



---



---



---



---



---



---



---

Biologist Signature: [Signature]

Date: 9/1/10

HGL Field Supervisor Signature: [Signature]

Date: 9-1-10

Date: 8/23/10

Sheet 1 of 1

### BIOLOGICAL RESOURCE MONITORING FORM

#### ACTIVITIES MONITORED

ID	Time	Area	Activities Monitored*	Equipment
1	0800-0930	<del>SS-15</del> 15	<input checked="" type="checkbox"/> VC <input type="checkbox"/> GS <input type="checkbox"/> GP <input type="checkbox"/> SS <input type="checkbox"/> MWS <input type="checkbox"/> SWSS <input type="checkbox"/> VC <input type="checkbox"/> GS <input type="checkbox"/> GP <input type="checkbox"/> SS <input type="checkbox"/> MWS <input type="checkbox"/> SWSS <input type="checkbox"/> VC <input type="checkbox"/> GS <input type="checkbox"/> GP <input type="checkbox"/> SS <input type="checkbox"/> MWS <input type="checkbox"/> SWSS <input type="checkbox"/> VC <input type="checkbox"/> GS <input type="checkbox"/> GP <input type="checkbox"/> SS <input type="checkbox"/> MWS <input type="checkbox"/> SWSS	chopper, weed whacker, lopper, chainsaw

\* VC = Vegetation Clearing, GS = Gamma Scanning, GP = Geophysical Survey, SS = Soil Sampling, MWS = Monitor Well Sampling, SWSS = Surface Water and Sediment Sampling

#### MONITORING RESULTS

ID	Protected Resources Encountered	Area	AMM's Implemented	Residual Impacts
1	Tox plants	SS-15	Avoided, monitor present	None

#### NOTES AND RECOMMENDATIONS:

Captured tarantula and relocated it to area N of SS-9.

---



---



---



---



---



---



---



---



---



---

Biologist Signature: [Signature]

Date: 8/23/10

HGL Field Supervisor Signature: [Signature]

Date: 8/31/10

Date: 8/31/10

Sheet 1 of 1

**BIOLOGICAL RESOURCE MONITORING FORM**

**ACTIVITIES MONITORED**

ID	Time	Area	Activities Monitored*	Equipment
1	800-1100	SA-17	<input checked="" type="checkbox"/> VC <input type="checkbox"/> GS <input type="checkbox"/> GP <input type="checkbox"/> SS <input type="checkbox"/> MWS <input type="checkbox"/> SWSS	Chipper, lopper, weed whacker, chainsaw
2	1100-1130	SB-14	<input type="checkbox"/> VC <input checked="" type="checkbox"/> GS <input type="checkbox"/> GP <input type="checkbox"/> SS <input type="checkbox"/> MWS <input type="checkbox"/> SWSS	Mule
3	1130-300	SA-17	<input checked="" type="checkbox"/> VC <input type="checkbox"/> GS <input type="checkbox"/> GP <input type="checkbox"/> SS <input type="checkbox"/> MWS <input type="checkbox"/> SWSS	Same as #1
4	900-920	SA-15	<input type="checkbox"/> VC <input checked="" type="checkbox"/> GS <input type="checkbox"/> GP <input type="checkbox"/> SS <input type="checkbox"/> MWS <input type="checkbox"/> SWSS	ERGS
			<input type="checkbox"/> VC <input type="checkbox"/> GS <input type="checkbox"/> GP <input type="checkbox"/> SS <input type="checkbox"/> MWS <input type="checkbox"/> SWSS	

\* VC = Vegetation Clearing, GS = Gamma Scanning, GP = Geophysical Survey, SS = Soil Sampling, MWS = Monitor Well Sampling, SWSS = Surface Water and Sediment Sampling

**MONITORING RESULTS**

ID	Protected Resources Encountered	Area	AMM's Implemented	Residual Impacts
1,3	tapplant oaks, woodrat middens	SA-17	avoidance, trimming of oaks	Tapplant OK, oaks trimmed, middens exposed
2	tapplant	SB-14	avoided	None
4	tapplant on rocks	SA-15	avoided	None

**NOTES AND RECOMMENDATIONS:**

Possible loggerhead shrike calling from SA-19 or 21.

Another Big-eared woodrat seen at SA-17 by large oaks - continue to preserve middens as much as possible.

Biologist Signature: [Signature]

Date: 8/21/10

HGL Field Supervisor Signature: [Signature]

Date: 8/31/10

Date: 9/3/10

Sheet 1 of 1

**BIOLOGICAL RESOURCE MONITORING FORM**

**ACTIVITIES MONITORED**

ID	Time	Area	Activities Monitored*	Equipment
1	800-1100	5A-18	<input checked="" type="checkbox"/> VC <input type="checkbox"/> GS <input type="checkbox"/> GP <input type="checkbox"/> SS <input type="checkbox"/> MWS <input type="checkbox"/> SWSS	Chipper, weed wackers, loggers, chainsaw
2	800-300	5A-17	<input checked="" type="checkbox"/> VC <input type="checkbox"/> GS <input type="checkbox"/> GP <input type="checkbox"/> SS <input type="checkbox"/> MWS <input type="checkbox"/> SWSS	(same as above)
			<input type="checkbox"/> VC <input type="checkbox"/> GS <input type="checkbox"/> GP <input type="checkbox"/> SS <input type="checkbox"/> MWS <input type="checkbox"/> SWSS	
			<input type="checkbox"/> VC <input type="checkbox"/> GS <input type="checkbox"/> GP <input type="checkbox"/> SS <input type="checkbox"/> MWS <input type="checkbox"/> SWSS	
			<input type="checkbox"/> VC <input type="checkbox"/> GS <input type="checkbox"/> GP <input type="checkbox"/> SS <input type="checkbox"/> MWS <input type="checkbox"/> SWSS	

\* VC = Vegetation Clearing, GS = Gamma Scanning, GP = Geophysical Survey, SS = Soil Sampling, MWS = Monitor Well Sampling, SWSS = Surface Water and Sediment Sampling

**MONITORING RESULTS**

ID	Protected Resources Encountered	Area	AMM's Implemented	Residual Impacts
1	tarplant, oaks.	5A-18	all tarplant avoided oaks trimmed per VTA co.	tarplant intact oaks ok
2	tarplant, <del>oaks</del>	5A-17	all tarplant avoided <del>oaks</del>	tarplant intact

**NOTES AND RECOMMENDATIONS:**

Lots of laurel sumac chipped on SW side of 5A-17.

Southern portion of 5A-17 nearly done with VC.

LDI doing excellent job with avoiding resources and minimizing VC damage.

Biologist Signature: [Signature]

Date: 9/3/10

HGL Field Supervisor Signature: [Signature]

Date: 9-3-10

Date: 8/20/10

Sheet 1 of 1

**BIOLOGICAL RESOURCE MONITORING FORM**

**ACTIVITIES MONITORED**

ID	Time	Area	Activities Monitored*	Equipment
1	1130-300	SS-14	<input type="checkbox"/> VC <input type="checkbox"/> GS <input type="checkbox"/> GP <input type="checkbox"/> SS <input type="checkbox"/> MWS <input type="checkbox"/> SWSS	Chipper, chainsaw
2	1130-300	SS-15	<input checked="" type="checkbox"/> VC <input type="checkbox"/> GS <input type="checkbox"/> GP <input type="checkbox"/> SS <input type="checkbox"/> MWS <input type="checkbox"/> SWSS	Weed whacker, trimmer, chainsaw
			<input type="checkbox"/> VC <input type="checkbox"/> GS <input type="checkbox"/> GP <input type="checkbox"/> SS <input type="checkbox"/> MWS <input type="checkbox"/> SWSS	
			<input type="checkbox"/> VC <input type="checkbox"/> GS <input type="checkbox"/> GP <input type="checkbox"/> SS <input type="checkbox"/> MWS <input type="checkbox"/> SWSS	
			<input type="checkbox"/> VC <input type="checkbox"/> GS <input type="checkbox"/> GP <input type="checkbox"/> SS <input type="checkbox"/> MWS <input type="checkbox"/> SWSS	

\* VC = Vegetation Clearing, GS = Gamma Scanning, GP = Geophysical Survey, SS = Soil Sampling, MWS = Monitor Well Sampling, SWSS = Surface Water and Sediment Sampling

**MONITORING RESULTS**

ID	Protected Resources Encountered	Area	AMM's Implemented	Residual Impacts
1	Tarplant, Oaks	SS-14	Avoided tarplant	See notes.
2	Tarplant, Oaks	SS-15	Avoided tarplant	None

**NOTES AND RECOMMENDATIONS:**

Two tarplant in SS-14 partially covered w/mulch. I instructed crew in SS-15 to avoid the tarplant there when mulching.

Biologist Signature: *Scott M*

Date: 8/20/10

HGL Field Supervisor Signature: *Teah Spang*

Date: 8/23/10

Date: 8/18/10

Sheet 1 of 1

**BIOLOGICAL RESOURCE MONITORING FORM**

**ACTIVITIES MONITORED**

ID	Time	Area	Activities Monitored*	Equipment
1	9:30-2:00	SS-14	<input checked="" type="checkbox"/> VC <input type="checkbox"/> GS <input type="checkbox"/> GP <input type="checkbox"/> SS <input type="checkbox"/> MWS <input type="checkbox"/> SWSS	wire whackers, loggers chain saw
			<input type="checkbox"/> VC <input type="checkbox"/> GS <input type="checkbox"/> GP <input type="checkbox"/> SS <input type="checkbox"/> MWS <input type="checkbox"/> SWSS	
			<input type="checkbox"/> VC <input type="checkbox"/> GS <input type="checkbox"/> GP <input type="checkbox"/> SS <input type="checkbox"/> MWS <input type="checkbox"/> SWSS	
			<input type="checkbox"/> VC <input type="checkbox"/> GS <input type="checkbox"/> GP <input type="checkbox"/> SS <input type="checkbox"/> MWS <input type="checkbox"/> SWSS	
			<input type="checkbox"/> VC <input type="checkbox"/> GS <input type="checkbox"/> GP <input type="checkbox"/> SS <input type="checkbox"/> MWS <input type="checkbox"/> SWSS	

\* VC = Vegetation Clearing, GS = Gamma Scanning, GP = Geophysical Survey, SS = Soil Sampling, MWS = Monitor Well Sampling, SWSS = Surface Water and Sediment Sampling

**MONITORING RESULTS**

ID	Protected Resources Encountered	Area	AMM's Implemented	Residual Impacts
1	Tan plants, oaks	SS-14	Large tree limbs, oaks trimmed per Vt(a) Ordinance.	

**NOTES AND RECOMMENDATIONS:**

• A list or more details regarding Ventura Co. Tree Ordinance are needed due to some questions from HGL about trimming. EA standards not being followed in all cases.

(big oared)

• Dusty-footed woodrat rescued from 2-foot deep 4-inch steel pipe in asphalt, using snake tongs by Pinkerton Security. Woodrat was shooed off site away from ~~mulch~~ mulch piles.

- Recommend filling ~~holes~~ or covering holes in ground. Wanted to fill in hole that trapped woodrat using dirt or asphalt bits, but denied permission by HGL. Potential for State Concern Species San Diego Desert Woodrat.

Biologist Signature: *Beth M*

Date: 8/18/10

HGL Field Supervisor Signature: *Reah Sping*

Date: 8/19/10

Date: 8/19/10

Sheet 1 of 1

**BIOLOGICAL RESOURCE MONITORING FORM**

**ACTIVITIES MONITORED**

ID	Time	Area	Activities Monitored*	Equipment
1	1000-2000	SS-14	<input checked="" type="checkbox"/> VC <input type="checkbox"/> GS <input type="checkbox"/> GP <input type="checkbox"/> SS <input type="checkbox"/> MWS <input type="checkbox"/> SWSS	12 ft. chainsaw chaffer
2	12-200	SS-15	<input checked="" type="checkbox"/> VC <input type="checkbox"/> GS <input type="checkbox"/> GP <input type="checkbox"/> SS <input type="checkbox"/> MWS <input type="checkbox"/> SWSS	weed whackers
			<input type="checkbox"/> VC <input type="checkbox"/> GS <input type="checkbox"/> GP <input type="checkbox"/> SS <input type="checkbox"/> MWS <input type="checkbox"/> SWSS	
			<input type="checkbox"/> VC <input type="checkbox"/> GS <input type="checkbox"/> GP <input type="checkbox"/> SS <input type="checkbox"/> MWS <input type="checkbox"/> SWSS	
			<input type="checkbox"/> VC <input type="checkbox"/> GS <input type="checkbox"/> GP <input type="checkbox"/> SS <input type="checkbox"/> MWS <input type="checkbox"/> SWSS	

\* VC = Vegetation Clearing, GS = Gamma Scanning, GP = Geophysical Survey, SS = Soil Sampling, MWS = Monitor Well Sampling, SWSS = Surface Water and Sediment Sampling

**MONITORING RESULTS**

ID	Protected Resources Encountered	Area	AMM's Implemented	Residual Impacts
1	Taylor's oaks	SS-14	Avoided top plants, minimal trimming of oaks	
2	Taylor's oaks	SS-15	Avoided top plants, minimal trimming of oaks	

**NOTES AND RECOMMENDATIONS:**

Briefly discussed need for clarification Uta training Ordinance w/ Leah, Richard (HGL) (LDI).

---



---



---



---



---



---



---



---



---



---

Biologist Signature: [Signature]

Date: 8/19/10

HGL Field Supervisor Signature: [Signature]

Date: 8/20/10

## BIOLOGICAL RESOURCE MONITORING FORM

ENVICOM CORPORATION

Date: 9/8/2010

Biologist: Scott Werner

### ACTIVITIES MONITORED

ID	Time	HSA Area	Survey Section	Activities Monitored*	Equipment Used
1	0800-1500	5A	19	VC	Weed whackers, loppers, chainsaw, chipper, skidster, front loader
2	1140-1150	5C	7	GS	Mule

\* VC = Vegetation Clearing, GS = Gamma Scanning, GP = Geophysical Survey, SS = Soil Sampling, MWS = Monitor Well Sampling, SWSS = Surface Water and Sediment Sampling

### MONITORING RESULTS

ID	Protected Resources Encountered	AMM's Implemented	Residual Impacts
1	Nesting bird. Santa Susana tarplant. Oaks. Woodrat middens.	50-foot buffer around mourning dove nest. Tarplant avoided. Oaks trimmed per Ventura Co. Ordinance. Woodrat middens avoided.	Dove nest still active at day's end. Tarplant intact. Oaks trimmed. Middens intact but cover reduced.
2	Santa Susana tarplant. Vernal pool.	Mule guided around tarplant and vernal pool.	Tarplant and vernal pool successfully avoided, no impacts.



**NOTES AND RECOMMENDATIONS:**

SS-19: During clearance survey, suitable habitat was identified for the following California Special Concern species: coast horned lizard (*Phrynosoma blainvillii*), silvery legless lizard (*Anniella pulchra pulchra*), San Diego desert woodrat (*Neotoma lepida intermedia*), and coast patch-nosed snake (*Salvadora hexalepis virgultea*). None detected at site.

Active mourning dove (*Zenaida macroura*) nest located in laurel sumac at western edge of SS-19 near dirt road. Several branches in shrub trimmed prior to discovery, but slight reduction in foliage cover and damage to nest habitat not deemed significant. Nest UTM 342696E, 3789193N NAD83. Two nestlings with flight feathers coming in, age estimated at 5-6 days. Typically 12-15 days to fledge. 50-60 foot buffer established around nest during which no work may take place without approval of monitor.

Woodrat seen crossing main road (G Street), fleeing vegetation work. It was likely big-eared woodrat (*Neotoma macrotis*) based on apparent size and other nearby woodrats recently identified. Successfully entered culvert at G St and 12<sup>th</sup> St.

Wildlife seen in SS-19:

Big-eared woodrat (*Neotoma macrotis*) (likely) Calif. Ground squirrel (*Spermophilus beecheyi*)

California whipsnake (*Masticophis lateralis*)

- |   |  |
|---|--|
| Mourning dove ( <i>Zenaida macroura</i> )             | common raven ( <i>Corvus corax</i> )               |
| western scrub-jay ( <i>Aphelocoma californica</i> )   | American crow ( <i>Corvus brachyrhynchos</i> )     |
| rock dove ( <i>Columba livia</i> ),                   | California towhee ( <i>Pipilo crissalis</i> )      |
| Anna's hummingbird ( <i>Calypte anna</i> )            | lark sparrow ( <i>Chondestes gramacus</i> )        |
| Oak titmouse ( <i>Baeolophus inornatus</i> )          | black phoebe ( <i>Sayornis nigricans</i> )         |
| Spotted towhee ( <i>Pipilo maculatus</i> )            | Nuttall's woodpecker ( <i>Picoides nuttallii</i> ) |
| White-breasted nuthatch ( <i>Sitta carolinensis</i> ) | Wrentit ( <i>Chamaea fasciata</i> )                |
| Bewick's wren ( <i>Thryomanes bewickii</i> )          | California quail ( <i>Callipepla californica</i> ) |
| Acorn woodpecker ( <i>Melanerpes formicivorus</i> )   |  |

Biologist Signature: [Signature]

Date: 9/8/10

HGL Field Supervisor Signature: [Signature]

Date: 9-8-10

## BIOLOGICAL RESOURCE MONITORING FORM

ENVICOM CORPORATION

Date: 9/9/2010

Biologist: Scott Werner

### ACTIVITIES MONITORED

ID	Time	HSA Area	Survey Section	Activities Monitored*	Equipment Used
1	0920-1345	5A	19	VC	Weed whackers, loppers, chainsaw, chipper, skidster, front loader
2	1345-1500	5B	12	VC	Weed whackers, loppers, chainsaw, chipper, skidster, skidster with mower, front loader

\* VC = Vegetation Clearing, GS = Gamma Scanning, GP = Geophysical Survey, SS = Soil Sampling, MWS = Monitor Well Sampling, SWSS = Surface Water and Sediment Sampling

### MONITORING RESULTS

ID	Protected Resources Encountered	AMM's Implemented	Residual Impacts
1	Nesting bird. Santa Susana tarplant. Oaks. Woodrat middens.	50-foot buffer around mourning dove nest. Tarplant avoided. Oaks trimmed per Ventura Co. Ordinance. Woodrat middens avoided.	Dove nest still active at day's end. Tarplant intact. Oaks trimmed. Middens intact but cover reduced.
2	Oaks. Woodrat middens. Least Bell's vireo habitat area. Suitable CSC wildlife habitat (see below).	Oaks trimmed per Ventura Co. Ordinance. Woodrat middens avoided. Least Bell's vireo habitat area avoided.  Monitor present for all other work.	Oaks trimmed. Middens intact but cover reduced. Least Bell's vireo habitat area intact.  CSC habitat reduced.

**NOTES AND RECOMMENDATIONS:**

SS-12 and SS-19: Suitable habitat identified for the following California Special Concern species: coast horned lizard (*Phrynosoma blainvillii*), silvery legless lizard (*Anniella pulchra pulchra*), San Diego desert woodrat (*Neotoma lepida intermedia*), and coast patch-nosed snake (*Salvadora hexalepis virgultea*). None detected at site.

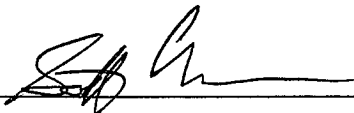
The active mourning dove (*Zenaida macroura*) in SS-19 nest was still active. Adult observed on nest brooding at least 1 nestling.

Wildlife seen in SS-19:

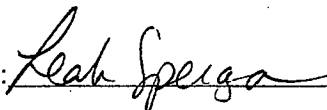
Calif. Ground squirrel (*Spermophilus beecheyi*)

Mourning dove (*Zenaida macroura*)  
lark sparrow (*Chondestes gramacus*)  
canyon wren (*Catherpes mexicanus*)  
California towhee (*Pipilo crissalis*)  
Oak titmouse (*Baeolophus inornatus*)  
Spotted towhee (*Pipilo maculatus*)  
Bewick's wren (*Thryomanes bewickii*)

California quail (*Callipepla californica*)  
common raven (*Corvus corax*)  
white-throated swift (*Aeronautes saxatilis*)  
California thrasher (*Toxostoma redivivum*)  
black phoebe (*Sayornis nigricans*)  
Nuttall's woodpecker (*Picoides nuttallii*)

Biologist Signature:  \_\_\_\_\_

Date: 9/9/10

HGL Field Supervisor Signature:  \_\_\_\_\_

Date: 9-9-10

## BIOLOGICAL RESOURCE MONITORING FORM

ENVICOM CORPORATION

Date: 9/14/2010 Tuesday

Biologist: Scott Werner

### ACTIVITIES MONITORED

HSA Area	Survey Section	Time	Activities Monitored*	Equipment Used
5A	SS-12 SS-19 SS-20 SS-22 SS-23	0800-1445	VC	Weed whackers, loppers, chainsaw, chipper, skidster, front loader
6	SS-25	1210, 1445	VC	Loppers, front loader (poison oak removal only)

\* VC = Vegetation Clearing, GS = Gamma Scanning, GP = Geophysical Survey, SS = Soil Sampling, MWS = Monitor Well Sampling, SWSS = Surface Water and Sediment Sampling

### MONITORING RESULTS

Survey Section	Protected Resources Encountered	AMM's Implemented	Residual Impacts
SS-19	Santa Susana tarplant	VC-1, VC-2, VC-10. Avoided, monitor present.	None.
SS-12 SS-19 SS-20 SS-22 SS-23	Oaks.	VC-1, VC-2. Oaks trimmed per Ventura Co. Ordinance.	Oaks trimmed.
SS-12 SS-19 SS-20 SS-22 SS-23	Woodrat middens.	VC-1, VC-2. Woodrat middens avoided.	Middens intact but cover reduced.
SS-12 SS-19 SS-20 SS-22 SS-23 SS-25	Suitable CSC wildlife habitat (see below).	VC-1, VC-2. Monitor present for all VC work.	CSC habitat reduced.

**NOTES AND RECOMMENDATIONS:**

SS-12, SS-19, SS-20, SS-22, SS-23, SS-25: Suitable habitat identified for the following California Special Concern species: coast horned lizard (*Phrynosoma blainvillii*), silvery legless lizard (*Anniella pulchra pulchra*), San Diego desert woodrat (*Neotoma lepida intermedia*), and coast patch-nosed snake (*Salvadora hexalepis virgulata*). None detected at site.

SS-25 not cleared for biological issues prior to encroachment by poison oak crew. Delineation between SS-19 and SS-25/28 not flagged. It is highly recommended that Survey Section boundaries be marked in the future because LDI does not have detailed maps showing this.

Small rattlesnake (*Crotalus viridis helleri*) at eastern edge of SS-19 escaped before snake handler arrived.

Wildlife seen onsite:

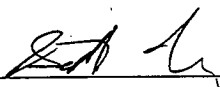
Calif. Ground squirrel (*Spermophilus beecheyi*)

- California Quail (*Callipepla californica*)
- Rock Pigeon (*Columba livia*)
- Mourning Dove (*Zenaida macroura*)
- Acorn Woodpecker (*Melanerpes formicivorus*)
- Nuttall's Woodpecker (*Picoides nuttallii*)
- Black Phoebe (*Sayornis nigricans*)
- Western Scrub-Jay (*Aphelocoma californica*)
- Common Raven (*Corvus corax*)

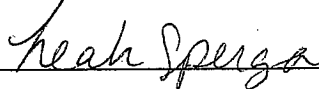
- Oak Titmouse (*Baeolophus inornatus*)
- Bushtit (*Psaltriparus minimus*)
- Canyon Wren (*Catherpes mexicanus*)
- Bewick's Wren (*Thryomanes bewickii*)
- Spotted Towhee (*Pipilo maculatus*)
- California Towhee (*Pipilo crissalis*)
- Lark Sparrow (*Chondestes grammacus*)
- House Finch (*Carpodacus mexicanus*)

- Western fence lizard (*Sceloporus occidentalis*)
- Side-blotched lizard (*Uta stansburiana*)

Southern Pacific rattlesnake (*Crotalus viridis helleri*)

Biologist Signature: 

Date: 9/15/10

HGL Field Supervisor Signature: 

Date: 9-22-10

## BIOLOGICAL RESOURCE MONITORING FORM

ENVICOM CORPORATION

Date: 9/15/2010 Wednesday

Biologist: Scott Werner

### ACTIVITIES MONITORED

HSA Area	Survey Section	Time	Activities Monitored*	Equipment Used
5A	SS-19 SS-20	0800-1445	VC	Weed whackers, loppers, chainsaw, chipper, skidster, front loader
6	SS-25	1040	VC	Mower

\* VC = Vegetation Clearing, GS = Gamma Scanning, GP = Geophysical Survey, SS = Soil Sampling, MWS = Monitor Well Sampling, SWSS = Surface Water and Sediment Sampling

### MONITORING RESULTS

Survey Section	Protected Resources Encountered	AMM's Implemented	Residual Impacts
SS-25	Suitable CSC wildlife habitat (see below).	VC-1, VC-2. Instructed mower driver to stop.	CSC habitat reduced.
SS-19 SS-20	Oaks.	VC-1, VC-2. Oaks trimmed per Ventura Co. Ordinance.	Oaks trimmed.
SS-19 SS-20	Woodrat middens.	VC-1, VC-2. Woodrat middens avoided.	Middens intact but cover reduced.
SS-19 SS-20	Suitable CSC wildlife habitat (see below).	VC-1, VC-2. Monitor present for all VC work.	CSC habitat reduced.

**NOTES AND RECOMMENDATIONS:**

SS-19, SS-20, SS-25: Suitable habitat identified for the following California Special Concern species: coast horned lizard (*Phrynosoma blainvillii*), silvery legless lizard (*Anniella pulchra pulchra*), San Diego desert woodrat (*Neotoma lepida intermedia*), and coast patch-nosed snake (*Salvadora hexalepis virgulata*). None detected at site.

SS-25 not cleared for biological issues prior to encroachment by mower. This is the second day in a row that LDI has encroached into an area not scheduled for work. Boundaries are not marked and crew was not stopped by HGL but rather by myself.

Relocated possibly injured fulvous harvest mouse (*Reithrodontomys fulvescens*) from SS-19 into SS-12 uncleared vireo area.

## Wildlife seen onsite:

Desert cottontail (*Sylvilagus audubonii*)  
Fulvous harvest mouse (*Reithrodontomys fulvescens*)

Calif. Ground squirrel (*Spermophilus beecheyi*)

California Quail (*Callipepla californica*)  
Rock Pigeon (*Columba livia*)  
Western Scrub-Jay (*Aphelocoma californica*)  
Oak Titmouse (*Baeolophus inornatus*)  
Bushtit (*Psaltriparus minimus*)  
Bewick's Wren (*Thryomanes bewickii*)  
California Towhee (*Pipilo crissalis*)  
Lark Sparrow (*Chondestes grammacus*)  
Black-headed Grosbeak (*Pheucticus melanocephalus*)

Western fence lizard (*Sceloporus occidentalis*)

Biologist Signature: Scott Werner

Date: 9/15/10

HGL Field Supervisor Signature: Heath Spersa

Date: 9-22-10

# BIOLOGICAL RESOURCE MONITORING FORM

ENVICOM CORPORATION

Date: 9/16/2010 Thursday

Biologist: Scott Werner

## ACTIVITIES MONITORED

HSA Area	Survey Section	Time	Activities Monitored*	Equipment Used
5A	SS-19	0800-1500	VC	Weed whackers, loppers, chainsaw, chipper, skidster, front loader
6	SS-28	1100	VC	Loppers, front loader
5A	SS-17	1410-1420	GS	Handcart

\* VC = Vegetation Clearing, GS = Gamma Scanning, GP = Geophysical Survey, SS = Soil Sampling, MWS = Monitor Well Sampling, SWSS = Surface Water and Sediment Sampling

## MONITORING RESULTS

Survey Section	Protected Resources Encountered	AMM's Implemented	Residual Impacts
SS-19	Santa Susana tarplant	VC-1, VC-2, VC-10. Avoided, monitor present.	None.
SS-19	Oaks.	VC-1, VC-2. Oaks trimmed per Ventura Co. Ordinance.	Oaks trimmed.
SS-19	Woodrat middens.	VC-1, VC-2. Woodrat middens avoided.	Middens intact but cover reduced.
SS-19	Suitable CSC wildlife habitat (see below).	VC-1, VC-2. Monitor present for all VC work.	CSC habitat reduced.
SS-17	Santa Susana tarplant	GS-5. Avoided, monitor present.	None.



**NOTES AND RECOMMENDATIONS:**

SS-19, SS-28: Suitable habitat identified for the following California Special Concern species: coast horned lizard (*Phrynosoma blainvillii*), silvery legless lizard (*Anniella pulchra pulchra*), San Diego desert woodrat (*Neotoma lepida intermedia*), and coast patch-nosed snake (*Salvadora hexalepis virgulata*). None detected at site.

Crew veered into SS-28 slightly for poison oak removal and minor trimming. I checked area for sensitive resources and did not find any. It is highly recommended that Survey Section boundaries be marked in the future because LDI does not have detailed maps showing this.

Southern Pacific rattlesnake (*Crotalus viridis helleri*) at eastern edge of SS-19 found 50 feet from where we had the one on Tuesday that escaped before removal. It appears to be the same snake today and it was removed.

## Wildlife seen onsite:

Calif. Ground squirrel (*Spermophilus beecheyi*)

Red-tailed Hawk (*Buteo jamaicensis*)

Mourning Dove (*Zenaida macroura*)

White-throated Swift (*Aeronautes saxatalis*)

Acorn Woodpecker (*Melanerpes formicivorus*)

Nuttall's Woodpecker (*Picoides nuttallii*)

Western Scrub-Jay (*Aphelocoma californica*)

Oak Titmouse (*Baeolophus inornatus*)

Bushtit (*Psaltriparus minimus*)

Canyon Wren (*Catherpes mexicanus*)

Bewick's Wren (*Thryomanes bewickii*)

California Towhee (*Pipilo crissalis*)

Lark Sparrow (*Chondestes grammacus*)


Western Tanager (*Piranga ludoviciana*)

Western fence lizard (*Sceloporus occidentalis*)

Southern Pacific rattlesnake (*Crotalus viridis helleri*)

Biologist Signature: 

Date: 9/16/10

HGL Field Supervisor Signature: 

Date: 9-22-10

## BIOLOGICAL RESOURCE MONITORING FORM

ENVICOM CORPORATION

Date: 9/17/2010 Friday

Biologist: Scott Werner

### ACTIVITIES MONITORED

HSA Area	Survey Section	Time	Activities Monitored*	Equipment Used
5A	SS-19	0800-1115	VC	Weed whackers, loppers, chainsaw, chipper, skidster, front loader
5B	SS-12	0900-0915	GS	ERGS
5A	SS-21	1230-1300	VC	Weed whackers, loppers, chainsaw, chipper, skidster

\* VC = Vegetation Clearing, GS = Gamma Scanning, GP = Geophysical Survey, SS = Soil Sampling, MWS = Monitor Well Sampling, SWSS = Surface Water and Sediment Sampling

### MONITORING RESULTS

Survey Section	Protected Resources Encountered	AMM's Implemented	Residual Impacts
SS-19	Santa Susana tarplant	VC-1, VC-2, VC-10. Avoided, monitor present.	None.
SS-19	Dudleya sp.	VC-1, VC-2, VC-9. Avoided, monitor present.	None.
SS-19 SS-21	Oaks.	VC-1, VC-2. Oaks trimmed per Ventura Co. Ordinance.	Oaks trimmed.
SS-19 SS-21	Woodrat middens.	VC-1, VC-2. Woodrat middens avoided.	Middens intact but cover reduced.
SS-19 SS-21	Suitable CSC wildlife habitat (see below).	VC-1, VC-2. Monitor present for all VC work.	CSC habitat reduced.
SS-12	Least Bell's Vireo habitat area	GS-1. Instructed ERGS drivers to stay out of protected, flagged area.	None.

**NOTES AND RECOMMENDATIONS:**

SS-19, SS-21: Suitable habitat identified for the following California Special Concern species: coast horned lizard (*Phrynosoma blainvillii*), silvery legless lizard (*Anniella pulchra pulchra*), San Diego desert woodrat (*Neotoma lepida intermedia*), and coast patch-nosed snake (*Salvadora hexalepis virgulata*). None detected at site.

Wildlife seen onsite:

Calif. Ground squirrel (*Spermophilus beecheyi*)  
Desert cottontail (*Sylvilagus audubonii*)

California Quail (*Callipepla californica*)  
Rock Pigeon (*Columba livia*)  
Nuttall's Woodpecker (*Picoides nuttallii*)  
Oak Titmouse (*Baeolophus inornatus*)  
Rock Wren (*Salpinctes obsoletus*)  
Wrentit (*Chamaea fasciata*)  
California Thrasher (*Toxostoma redivivum*)  
Spotted Towhee (*Pipilo maculatus*)  
California Towhee (*Pipilo crissalis*)  
Red-winged Blackbird (*Agelaius phoeniceus*)

Western fence lizard (*Sceloporus occidentalis*)  
Side-blotched lizard (*Uta stansburiana*)

Biologist Signature: Scott A. Werner

Date: 9/17/10

HGL Field Supervisor Signature: Leah Sperry

Date: 9-22-10

**BIOLOGICAL RESOURCE MONITORING FORM**  
 ENVICOM CORPORATION

Date: 09/22/2010 Wednesday

Biologist: Scott Werner

**ACTIVITIES MONITORED**

HSA Area	Survey Section	Time	Activities Monitored*	Equipment Used
5D	SS-51	0800-1500	VC	Weed whackers, loppers, chainsaw, front loader
5A	SS-17	0920-0935	GS	ERGS, handcart
5A	SS-19	10156	GS	Mule

\* VC = Vegetation Clearing, GS = Gamma Scanning, GP = Geophysical Survey, SS = Soil Sampling, MWS = Monitor Well Sampling, SWSS = Surface Water and Sediment Sampling

**MONITORING RESULTS**

Survey Section	Protected Resources Encountered	AMM's Implemented	Residual Impacts
SS-51	Braunton's milkvetch	VC-1, VC-2, VC-3. Avoided, monitor present.	None
SS-51	Malibu baccharis	VC-1, VC-2. Avoided, monitor present.	2 plants trimmed back before being flagged on eastern edge of plot.
SS-51	California black walnut	VC-1, VC-2. Most small trees are less than minimum size (3" dbh) to be preserved under Ventura County Tree Protection Ordinance and were cut to ground level.	Most trimmed to ground but will resprout.
SS-51	Oaks.	VC-1, VC-2. Oaks trimmed per Ventura Co. Ordinance.	Oaks trimmed, most trees less than 3" dbh removed.
SS-51	Suitable CSC wildlife habitat (see below).	VC-1, VC-2. Monitor present for all VC work.	CSC habitat reduced.
SS-17	Santa Susana tarplant	GS-1, GS-5	None
SS-19	Santa Susana tarplant	GS-1, GS-2, GS-5	None
SS-19	Dudleya	GS-1, GS-2	None

9/22/2010

Scott Werner

**NOTES AND RECOMMENDATIONS:**

Suitable habitat for California Special Concern Species coast horned lizard (*Phrynosoma blainvillii*), coast patch-nosed snake (*Salvadora hexalepis virgulata*) and silvery legless lizard (*Anniella pulchra pulchra*) identified during clearance survey on 9/20/2010. Species were not detected at site.

Skidster mowing SS-51 (not closely monitoring but seen from hillside).

Loggerhead shrike still seen to still be lingering at SS-54.

Biologist Signature: \_\_\_\_\_

Date: \_\_\_\_\_

HGL Field Supervisor Signature: \_\_\_\_\_

Date: \_\_\_\_\_

# BIOLOGICAL RESOURCE MONITORING FORM

ENVICOM CORPORATION

Date: 09/23/2010 Thursday

Biologist: Scott Werner

## ACTIVITIES MONITORED

HSA Area	Survey Section	Time	Activities Monitored*	Equipment Used
5D	SS-51	0800-1500	VC	Weed whackers, loppers, chainsaw, front loader

\* VC = Vegetation Clearing, GS = Gamma Scanning, GP = Geophysical Survey, SS = Soil Sampling, MWS = Monitor Well Sampling, SWSS = Surface Water and Sediment Sampling

## MONITORING RESULTS

Survey Section	Protected Resources Encountered	AMM's Implemented	Residual Impacts
SS-51	Braunton's milkvetch	VC-1, VC-2, VC-3. Avoided, monitor present.	None
SS-51	Malibu baccharis	VC-1, VC-2. Avoided, monitor present.	None
SS-51	California black walnut	VC-1, VC-2. Most small trees are less than minimum size (3" dbh) to be preserved under Ventura County Tree Protection Ordinance and were cut to ground level.	Most trimmed to ground but will resprout.
SS-51	Oaks.	VC-1, VC-2. Oaks trimmed per Ventura Co. Ordinance.	Oaks trimmed, most trees less than 3" dbh removed.
SS-51	Suitable CSC wildlife habitat (see below).	VC-1, VC-2. Monitor present for all VC work.	CSC habitat reduced.

9/23/2010

Scott Werner

**NOTES AND RECOMMENDATIONS:**

Suitable habitat for California Special Concern Species coast horned lizard (*Phrynosoma blainvillii*), coast patch-nosed snake (*Salvadora hexalepis virgulata*) and silvery legless lizard (*Anniella pulchra pulchra*) identified during clearance survey on 9/20/2010. Species were not detected at site.

Skidster spending most of morning finishing mowing SS-51.

Biologist Signature: \_\_\_\_\_

Date: \_\_\_\_\_

HGL Field Supervisor Signature: \_\_\_\_\_

Date: \_\_\_\_\_

## BIOLOGICAL RESOURCE MONITORING FORM

ENVICOM CORPORATION

Date: 09/24/2010 Friday

Biologist: Scott Werner

### ACTIVITIES MONITORED

HSA Area	Survey Section	Time	Activities Monitored*	Equipment Used
5D	SS-51	0800-1500	VC	Weed whackers, loppers, chainsaw, skidster, front loader

\* VC = Vegetation Clearing, GS = Gamma Scanning, GP = Geophysical Survey, SS = Soil Sampling, MWS = Monitor Well Sampling, SWSS = Surface Water and Sediment Sampling

### MONITORING RESULTS

Survey Section	Protected Resources Encountered	AMM's Implemented	Residual Impacts
SS-51	Braunton's milkvetch	VC-1, VC-2, VC-3. Avoided, monitor present.	3 milkvetch damaged/cut today.
SS-51	Malibu baccharis	VC-1, VC-2. Avoided, monitor present.	None
SS-51	California black walnut	VC-1, VC-2. Most small trees are less than minimum size (3" dbh) to be preserved under Ventura County Tree Protection Ordinance and were cut to ground level.	Most trimmed to ground but will resprout.
SS-51	Oaks.	VC-1, VC-2. Oaks trimmed per Ventura Co. Ordinance.	Oaks trimmed, most trees less than 3" dbh removed.
SS-51	Suitable CSC wildlife habitat (see below).	VC-1, VC-2. Monitor present for all VC work.	CSC habitat reduced.



**NOTES AND RECOMMENDATIONS:**

Suitable habitat for California Special Concern Species coast horned lizard (*Phrynosoma blainvillii*), coast patch-nosed snake (*Salvadora hexalepis virgulata*) and silvery legless lizard (*Anniella pulchra pulchra*) identified during clearance survey on 9/20/2010. Species were not detected at site.

One Braunton's milkvetch was uprooted at UTM 341994E, 3788680N. This was located in a clump of 4-5 milkvetch and although this plant was not flagged, surrounding plants were.

Another milkvetch at UTM 342009E, 3788687N appears to be damaged in root system but is still standing (is unsteady and may fall in high winds or rain). Damaged resulted from skidster brushing up against it while removing a load of vegetation. Location is near the water main on east edge of plot, and this previously disturbed area was the best place for the skidster to get in to remove piled up vegetation for chipping on road below at flat terrain.

A third milkvetch (UTM 341990E, 3788662N) cut at base by chainsaw, appears to have been mistaken for toyon limb as stem was about 1 foot away from clump of toyon trunks.

**Recommendation** made to use loppers when milkvetch is growing within canopy of toyon or other shrubs, clear an area around the milkvetch and stem, and then use chainsaw when demarcation between milkvetch and shrub is clear.

Skidster ("tank") is reaching fairly far up hillside with fork attachment to remove piles of woody vegetation created by cutting crews. Driver was advised to make straight approaches and then back down hill, avoiding turns that might upturn dirt and associated low-growing vegetation. Overall this approach is working with minimal damage to hillside and sensitive plants.

One note of interest: small inactive bird nest (lesser goldfinch?) seen in Braunton's milkvetch at UTM 341946E, 3788660N.

Loggerhead shrike still hunting at SS-54, SS-55, SS-56 despite these plots having been mowed in last few days.

Biologist Signature: \_\_\_\_\_

Date: \_\_\_\_\_

HGL Field Supervisor Signature: \_\_\_\_\_

Date: \_\_\_\_\_

**BIOLOGICAL RESOURCE MONITORING FORM**  
 ENVICOM CORPORATION

Date: 09/27/2010 Monday

Biologist: Scott Werner

**ACTIVITIES MONITORED**

HSA Area	Survey Section	Time	Activities Monitored*	Equipment Used
5D	SS-51	0800-1230	VC	Weed whackers, loppers, chainsaw, chipper, skidster, front loader

\* VC = Vegetation Clearing, GS = Gamma Scanning, GP = Geophysical Survey, SS = Soil Sampling, MWS = Monitor Well Sampling, SWSS = Surface Water and Sediment Sampling

**MONITORING RESULTS**

Survey Section	Protected Resources Encountered	AMM's Implemented	Residual Impacts
SS-51	Braunton's milkvetch	VC-1, VC-2, VC-3. Avoided, monitor present.	None.
SS-51	Malibu baccharis	VC-1, VC-2. Avoided, monitor present.	None
SS-51	California black walnut	VC-1, VC-2. Most small trees are less than minimum size (3" dbh) to be preserved under Ventura County Tree Protection Ordinance and were cut to ground level.	Most trimmed to ground but will resprout.
SS-51	Oaks.	VC-1, VC-2. Oaks trimmed per Ventura Co. Ordinance.	Oaks trimmed, most trees less than 3" dbh removed.
SS-51	Suitable CSC wildlife habitat (see below).	VC-1, VC-2. Monitor present for all VC work.	CSC habitat reduced.

**NOTES AND RECOMMENDATIONS:**

Suitable habitat for California Special Concern Species coast horned lizard (*Phrynosoma blainvillii*), coast patch-nosed snake (*Salvadora hexalepis virgultea*) and silvery legless lizard (*Anniella pulchra pulchra*) identified during clearance survey on 9/20/2010. Species were not detected at site.

**Recommendation** made to use loppers when milkvetch is growing within canopy of toyon or other shrubs, clear an area around the milkvetch and stem, and then use chainsaw when demarcation between milkvetch and shrub is clear.

Progress on SS-51: most VC work still in burned oak woodland, weed whackers got to western edge of HSA-8 portion that cuts through SS-51, chipping lots of material on road at NE edge of SS-51 and SS-58

Biologist Signature: \_\_\_\_\_

Date: \_\_\_\_\_

HGL Field Supervisor Signature: \_\_\_\_\_

Date: \_\_\_\_\_

**BIOLOGICAL RESOURCE MONITORING FORM**  
 ENVICOM CORPORATION

Date: 09/28/2010 Tuesday

Biologist: Scott Werner

**ACTIVITIES MONITORED**

HSA Area	Survey Section	Time	Activities Monitored*	Equipment Used
5D	SS-51	0800-1500	VC	Weed whackers, loppers, chainsaw, chipper, skidster, front loader

\* VC = Vegetation Clearing, GS = Gamma Scanning, GP = Geophysical Survey, SS = Soil Sampling, MWS = Monitor Well Sampling, SWSS = Surface Water and Sediment Sampling

**MONITORING RESULTS**

Survey Section	Protected Resources Encountered	AMM's Implemented	Residual Impacts
SS-51	Braunton's milkvetch	VC-1, VC-2, VC-3. Avoided, monitor present.	1 branch damaged on plant that should survive.
SS-51	Malibu baccharis	VC-1, VC-2. Avoided, monitor present.	About 5 plants that were not flagged have been heavily cut back but will likely survive due to this species' growth pattern.
SS-51	California black walnut	VC-1, VC-2. Most small trees are less than minimum size (3" dbh) to be preserved under Ventura County Tree Protection Ordinance and were cut to ground level.	Most trimmed to ground but will resprout.
SS-51	Oaks.	VC-1, VC-2. Oaks trimmed per Ventura Co. Ordinance.	Oaks trimmed, most trees less than 3" dbh removed.
SS-51	Suitable CSC wildlife habitat (see below).	VC-1, VC-2. Monitor present for all VC work.	CSC habitat reduced.

9/28/2010

Scott Werner

**NOTES AND RECOMMENDATIONS:**

Suitable habitat for California Special Concern Species coast horned lizard (*Phrynosoma blainvillii*), coast patch-nosed snake (*Salvadora hexalepis virgultea*) and silvery legless lizard (*Anniella pulchra pulchra*) identified during clearance survey on 9/20/2010. Species were not detected at site.

Preston Butler (HGL) and Roger Shura (EPA) are inspecting site and would like to see more dead wood and small trees removed that are not protected under the Ventura County Tree Trimming Ordinance. LDI states that they are generally not able to remove most limbs above shoulder height.

One Braunton's milkvetch damaged (large branch torn away from main stem) at UTM 3411865E 3788691N.

Same loggerhead shrike seen near SS-54.

Biologist Signature: \_\_\_\_\_

Date: \_\_\_\_\_

HGL Field Supervisor Signature: \_\_\_\_\_

Date: \_\_\_\_\_

# BIOLOGICAL RESOURCE MONITORING FORM

ENVICOM CORPORATION

Date: 09/29/2010 Wednesday

Biologist: Scott Werner

## ACTIVITIES MONITORED

HSA Area	Survey Section	Time	Activities Monitored*	Equipment Used
5D	SS-51	0800-1500	VC	Weed whackers, loppers, chainsaw, chipper, skidster, front loader

\* VC = Vegetation Clearing, GS = Gamma Scanning, GP = Geophysical Survey, SS = Soil Sampling, MWS = Monitor Well Sampling, SWSS = Surface Water and Sediment Sampling

## MONITORING RESULTS

Survey Section	Protected Resources Encountered	AMM's Implemented	Residual Impacts
SS-51	Braunton's milkvetch	VC-1, VC-2, VC-3. Avoided, monitor present.	None
SS-51	Malibu baccharis	VC-1, VC-2. Avoided, monitor present.	None
SS-51	Coast horned lizards	n/a (translocated off SS-51)	Successfully translocated.
SS-51	California black walnut	VC-1, VC-2. Most small trees are less than minimum size (3" dbh) to be preserved under Ventura County Tree Protection Ordinance and were cut to ground level.	Most trimmed to ground but will resprout.
SS-51	Oaks.	VC-1, VC-2. Oaks trimmed per Ventura Co. Ordinance.	Oaks trimmed, most trees less than 3" dbh removed.
SS-51	Suitable CSC wildlife habitat (see below).	VC-1, VC-2. Monitor present for all VC work.	CSC habitat reduced.

9/29/2010

Scott Werner

**NOTES AND RECOMMENDATIONS:**

Suitable habitat for California Special Concern Species coast horned lizard (*Phrynosoma blainvillii*), coast patch-nosed snake (*Salvadora hexalepis virgulata*) and silvery legless lizard (*Anniella pulchra pulchra*) identified during clearance survey on 9/20/2010.

Today crews were weed-whacking and removing burned chaparral limbs on upper portion of SS-51 in milkvetch area.

Very young coast horned lizard (yearling?) found at UTM 341831E, 3788611N, translocated to SS-52 at UTM 341807E, 3788577N.

Another smallish coast horned lizard found at UTM 341934E, 3788624N.

Biologist Signature: \_\_\_\_\_

Date: \_\_\_\_\_

HGL Field Supervisor Signature: \_\_\_\_\_

Date: \_\_\_\_\_

## BIOLOGICAL RESOURCE MONITORING FORM

ENVICOM CORPORATION

Date: 09/30/2010 Thursday

Biologist: Scott Werner

### ACTIVITIES MONITORED

HSA Area	Survey Section	Time	Activities Monitored*	Equipment Used
5D	SS-51	0800-1500	VC	Weed whackers, loppers, chainsaw, chipper, skidster, front loader

\* VC = Vegetation Clearing, GS = Gamma Scanning, GP = Geophysical Survey, SS = Soil Sampling, MWS = Monitor Well Sampling, SWSS = Surface Water and Sediment Sampling

### MONITORING RESULTS

Survey Section	Protected Resources Encountered	AMM's Implemented	Residual Impacts
SS-51	Braunton's milkvetch	VC-1, VC-2, VC-3. Avoided, monitor present.	None
SS-51	Malibu baccharis	VC-1, VC-2. Avoided, monitor present.	None
SS-51	California black walnut	VC-1, VC-2. Most small trees are less than minimum size (3" dbh) to be preserved under Ventura County Tree Protection Ordinance and were cut to ground level.	Most trimmed to ground but will resprout.
SS-51	Oaks.	VC-1, VC-2. Oaks trimmed per Ventura Co. Ordinance.	Oaks trimmed, most trees less than 3" dbh removed.
SS-51	Suitable CSC wildlife habitat (see below).	VC-1, VC-2. Monitor present for all VC work.	CSC habitat reduced.



9/30/2010

Scott Werner

**NOTES AND RECOMMENDATIONS:**

Suitable habitat for California Special Concern Species coast horned lizard (*Phrynosoma blainvillii*), coast patch-nosed snake (*Salvadora hexalepis virgulata*) and silvery legless lizard (*Anniella pulchra pulchra*) identified during clearance survey on 9/20/2010. Species were not detected at site.

Today crews continued weed-whacking and removing burned chaparral limbs on upper portion of SS-51 in milkvetch area. Chipper active below along N side of SS-51.

Biologist Signature: \_\_\_\_\_

Date: \_\_\_\_\_

HGL Field Supervisor Signature: \_\_\_\_\_

Date: \_\_\_\_\_

## BIOLOGICAL RESOURCE MONITORING FORM

ENVICOM CORPORATION

Date: 10/1/2010 Friday

Biologist: Scott Werner

### ACTIVITIES MONITORED

HSA Area	Survey Section	Time	Activities Monitored*	Equipment Used
5D	SS-51	0800-1500	VC	Weed whackers, loppers, chainsaw, chipper, skidster

\* VC = Vegetation Clearing, GS = Gamma Scanning, GP = Geophysical Survey, SS = Soil Sampling, MWS = Monitor Well Sampling, SWSS = Surface Water and Sediment Sampling

### MONITORING RESULTS

Survey Section	Protected Resources Encountered	AMM's Implemented	Residual Impacts
SS-51	Braunton's milkvetch	VC-1, VC-2, VC-3. Avoided, monitor present.	1 milkvetch plant damaged at main stem (likely from weed whacker)
SS-51	Malibu baccharis	VC-1, VC-2. Avoided, monitor present.	Some plants slightly trimmed but will survive.
SS-51	California black walnut	VC-1, VC-2. Most small trees are less than minimum size (3" dbh) to be preserved under Ventura County Tree Protection Ordinance and were cut to ground level.	Most trimmed to ground but will resprout.
SS-51	Coast horned lizards	n/a (translocated off SS-51)	Successfully translocated
SS-51	Oaks.	VC-1, VC-2. Oaks trimmed per Ventura Co. Ordinance.	Oaks trimmed, some less than 3" dbh removed.
SS-51	Woodrat middens.	VC-1, VC-2. Woodrat middens avoided.	Middens intact but cover reduced.
SS-51	Suitable CSC wildlife habitat (see below).	VC-1, VC-2. Monitor present for all VC work.	CSC habitat reduced.

**NOTES AND RECOMMENDATIONS:**

0945: 4 juvenile coast horned lizards (*Phrynosoma blainvillii*; California Species of Special Concern) found at SE corner of SS-51 (UTM 341930E, 3788579N) as workers cleared vegetation. I translocated all 4 to SS-52 along Area IV boundary near water tank access road at UTM 341761E, 3788465N.

1230: 1 adult coast horned lizard found just north of discovery site of 4 lizards described above, at UTM 341949E, 3788615N. Individual translocated to SS-49 at UTM 341666E, 3788637N.

1 Branton's milkvetch badly damaged at main stem (likely from weed whacker) at UTM 341949E, 3788627N; will count as take.

Suitable habitat for California Special Concern Species coast patch-nosed snake (*Salvadora hexalepis virgulata*) and silvery legless lizard (*Anniella pulchra pulchra*) identified during clearance survey on 9/20/2010. Species were not detected at site.

Loggerhead shrike still seen at SS-54.

Biologist Signature: \_\_\_\_\_

Date: \_\_\_\_\_

HGL Field Supervisor Signature: \_\_\_\_\_

Date: \_\_\_\_\_

# BIOLOGICAL RESOURCE MONITORING FORM

ENVICOM CORPORATION

Date: 10/4/2010 Monday

Biologist: Scott Werner

## ACTIVITIES MONITORED

HSA Area	Survey Section	Time	Activities Monitored	Equipment Used
5B	SS-12	0800-1500	VC	Weed whackers, loppers, chainsaw, chipper, skidster with mower, front loader

\* VC = Vegetation Clearing, GS = Gamma Scanning, GP = Geophysical Survey, SS = Soil Sampling, MWS = Monitor Well Sampling, SWSS = Surface Water and Sediment Sampling

## MONITORING RESULTS

Survey Section	Protected Resources Encountered	AMM's Implemented	Residual Impacts
SS-12	Riparian vegetation (Least Bell's Vireo area)	Protection of riparian resources (Pages N-1 to N-3).	Woody riparian shrubs trimmed but left intact.
SS-12	Suitable CSC wildlife habitat (see below).	VC-1, VC-2. Monitor present for all VC work.	CSC habitat reduced.

**NOTES AND RECOMMENDATIONS:**

Least Bell's vireo (LBV) habitat area has been off-limits to crews since start of project in July. October 1 is start of non-sensitive period when LBV are known to be off-site and wintering in Mexico.

Amended Clearance Report for SS-12 dated 9/10/2010 identified suitable habitat for the following California Special Concern species: coast horned lizard (*Phrynosoma blainvillii*), silvery legless lizard (*Anniella pulchra pulchra*), San Diego desert woodrat (*Neotoma lepida intermedia*), and coast patch-nosed snake (*Salvadora hexalepis virgulata*). None detected at site.

Crews started trimming in riparian area in northwest section of LBV area downstream of G Street and got to about 100 feet downstream with woody trimming. Most shrubs left intact where bordering drainages. Riparian drainage is distinct just below G Street but then flattens out for about 100 feet. Drainage reemerges with southernmost 300 feet above southern limit of SS-12.

Skidster with mower attachment flattened herbaceous growth to northeast and southwest of scrub area. Weed whackers trimmed entire LBV area where possible.

5 rattlesnakes found (4 removed). No sensitive species observed.

Biologist Signature: \_\_\_\_\_

Date: \_\_\_\_\_

HGL Field Supervisor Signature: \_\_\_\_\_

Date: \_\_\_\_\_