

RIGHT - OF - WAY	CROSSING					
TRACT NUMBERS	LA-CM-064.000 ROW	LA-CM-065.000 ROW	LA-CM-066.000 ROW	LA-CM-067.000 ROW	LA-CM-068.000 ROW	LA-CM-069.000 ROW
ROADAGE	3866+00	3870+00	3874+00	3878+00	3882+00	3886+00
SURVEY DATA	1877-02 CL. TRANS. CAMERON GAS PIPELINE (47") 1877-03 CL. TRANS. CAMERON GAS PIPELINE (47") 1877-04 CL. TRANS. CAMERON GAS PIPELINE (47") 1877-05 CL. TRANS. CAMERON GAS PIPELINE (47") 1877-06 CL. TRANS. CAMERON GAS PIPELINE (47") 1877-07 CL. TRANS. CAMERON GAS PIPELINE (47") 1877-08 CL. TRANS. CAMERON GAS PIPELINE (47") 1877-09 CL. TRANS. CAMERON GAS PIPELINE (47") 1877-10 CL. TRANS. CAMERON GAS PIPELINE (47") 1877-11 CL. TRANS. CAMERON GAS PIPELINE (47") 1877-12 CL. TRANS. CAMERON GAS PIPELINE (47") 1877-13 CL. TRANS. CAMERON GAS PIPELINE (47") 1877-14 CL. TRANS. CAMERON GAS PIPELINE (47") 1877-15 CL. TRANS. CAMERON GAS PIPELINE (47") 1877-16 CL. TRANS. CAMERON GAS PIPELINE (47") 1877-17 CL. TRANS. CAMERON GAS PIPELINE (47") 1877-18 CL. TRANS. CAMERON GAS PIPELINE (47") 1877-19 CL. TRANS. CAMERON GAS PIPELINE (47") 1877-20 CL. TRANS. CAMERON GAS PIPELINE (47") 1877-21 CL. TRANS. CAMERON GAS PIPELINE (47") 1877-22 CL. TRANS. CAMERON GAS PIPELINE (47") 1877-23 CL. TRANS. CAMERON GAS PIPELINE (47") 1877-24 CL. TRANS. CAMERON GAS PIPELINE (47") 1877-25 CL. TRANS. CAMERON GAS PIPELINE (47") 1877-26 CL. TRANS. CAMERON GAS PIPELINE (47") 1877-27 CL. TRANS. CAMERON GAS PIPELINE (47") 1877-28 CL. TRANS. CAMERON GAS PIPELINE (47") 1877-29 CL. TRANS. CAMERON GAS PIPELINE (47") 1877-30 CL. TRANS. CAMERON GAS PIPELINE (47") 1877-31 CL. TRANS. CAMERON GAS PIPELINE (47") 1877-32 CL. TRANS. CAMERON GAS PIPELINE (47") 1877-33 CL. TRANS. CAMERON GAS PIPELINE (47") 1877-34 CL. TRANS. CAMERON GAS PIPELINE (47") 1877-35 CL. TRANS. CAMERON GAS PIPELINE (47") 1877-36 CL. TRANS. CAMERON GAS PIPELINE (47") 1877-37 CL. TRANS. CAMERON GAS PIPELINE (47") 1877-38 CL. TRANS. CAMERON GAS PIPELINE (47") 1877-39 CL. TRANS. CAMERON GAS PIPELINE (47") 1877-40 CL. TRANS. CAMERON GAS PIPELINE (47") 1877-41 CL. TRANS. CAMERON GAS PIPELINE (47") 1877-42 CL. TRANS. CAMERON GAS PIPELINE (47") 1877-43 CL. TRANS. CAMERON GAS PIPELINE (47") 1877-44 CL. TRANS. CAMERON GAS PIPELINE (47") 1877-45 CL. TRANS. CAMERON GAS PIPELINE (47") 1877-46 CL. TRANS. CAMERON GAS PIPELINE (47") 1877-47 CL. TRANS. CAMERON GAS PIPELINE (47") 1877-48 CL. TRANS. CAMERON GAS PIPELINE (47") 1877-49 CL. TRANS. CAMERON GAS PIPELINE (47") 1877-50 CL. TRANS. CAMERON GAS PIPELINE (47") 1877-51 CL. TRANS. CAMERON GAS PIPELINE (47") 1877-52 CL. TRANS. CAMERON GAS PIPELINE (47") 1877-53 CL. TRANS. CAMERON GAS PIPELINE (47") 1877-54 CL. TRANS. CAMERON GAS PIPELINE (47") 1877-55 CL. TRANS. CAMERON GAS PIPELINE (47") 1877-56 CL. TRANS. CAMERON GAS PIPELINE (47") 1877-57 CL. TRANS. CAMERON GAS PIPELINE (47") 1877-58 CL. TRANS. CAMERON GAS PIPELINE (47") 1877-59 CL. TRANS. CAMERON GAS PIPELINE (47") 1877-60 CL. TRANS. CAMERON GAS PIPELINE (47") 1877-61 CL. TRANS. CAMERON GAS PIPELINE (47") 1877-62 CL. TRANS. CAMERON GAS PIPELINE (47") 1877-63 CL. TRANS. CAMERON GAS PIPELINE (47") 1877-64 CL. TRANS. CAMERON GAS PIPELINE (47") 1877-65 CL. TRANS. CAMERON GAS PIPELINE (47") 1877-66 CL. TRANS. CAMERON GAS PIPELINE (47") 1877-67 CL. TRANS. CAMERON GAS PIPELINE (47") 1877-68 CL. TRANS. CAMERON GAS PIPELINE (47") 1877-69 CL. TRANS. CAMERON GAS PIPELINE (47") 1877-70 CL. TRANS. CAMERON GAS PIPELINE (47") 1877-71 CL. TRANS. CAMERON GAS PIPELINE (47") 1877-72 CL. TRANS. CAMERON GAS PIPELINE (47") 1877-73 CL. TRANS. CAMERON GAS PIPELINE (47") 1877-74 CL. TRANS. CAMERON GAS PIPELINE (47") 1877-75 CL. TRANS. CAMERON GAS PIPELINE (47") 1877-76 CL. TRANS. CAMERON GAS PIPELINE (47") 1877-77 CL. TRANS. CAMERON GAS PIPELINE (47") 1877-78 CL. TRANS. CAMERON GAS PIPELINE (47") 1877-79 CL. TRANS. CAMERON GAS PIPELINE (47") 1877-80 CL. TRANS. CAMERON GAS PIPELINE (47") 1877-81 CL. TRANS. CAMERON GAS PIPELINE (47") 1877-82 CL. TRANS. CAMERON GAS PIPELINE (47") 1877-83 CL. TRANS. CAMERON GAS PIPELINE (47") 1877-84 CL. TRANS. CAMERON GAS PIPELINE (47") 1877-85 CL. TRANS. CAMERON GAS PIPELINE (47") 1877-86 CL. TRANS. CAMERON GAS PIPELINE (47") 1877-87 CL. TRANS. CAMERON GAS PIPELINE (47") 1877-88 CL. TRANS. CAMERON GAS PIPELINE (47") 1877-89 CL. TRANS. CAMERON GAS PIPELINE (47") 1877-90 CL. TRANS. CAMERON GAS PIPELINE (47") 1877-91 CL. TRANS. CAMERON GAS PIPELINE (47") 1877-92 CL. TRANS. CAMERON GAS PIPELINE (47") 1877-93 CL. TRANS. CAMERON GAS PIPELINE (47") 1877-94 CL. TRANS. CAMERON GAS PIPELINE (47") 1877-95 CL. TRANS. CAMERON GAS PIPELINE (47") 1877-96 CL. TRANS. CAMERON GAS PIPELINE (47") 1877-97 CL. TRANS. CAMERON GAS PIPELINE (47") 1877-98 CL. TRANS. CAMERON GAS PIPELINE (47") 1877-99 CL. TRANS. CAMERON GAS PIPELINE (47") 1877-00 CL. TRANS. CAMERON GAS PIPELINE (47")					

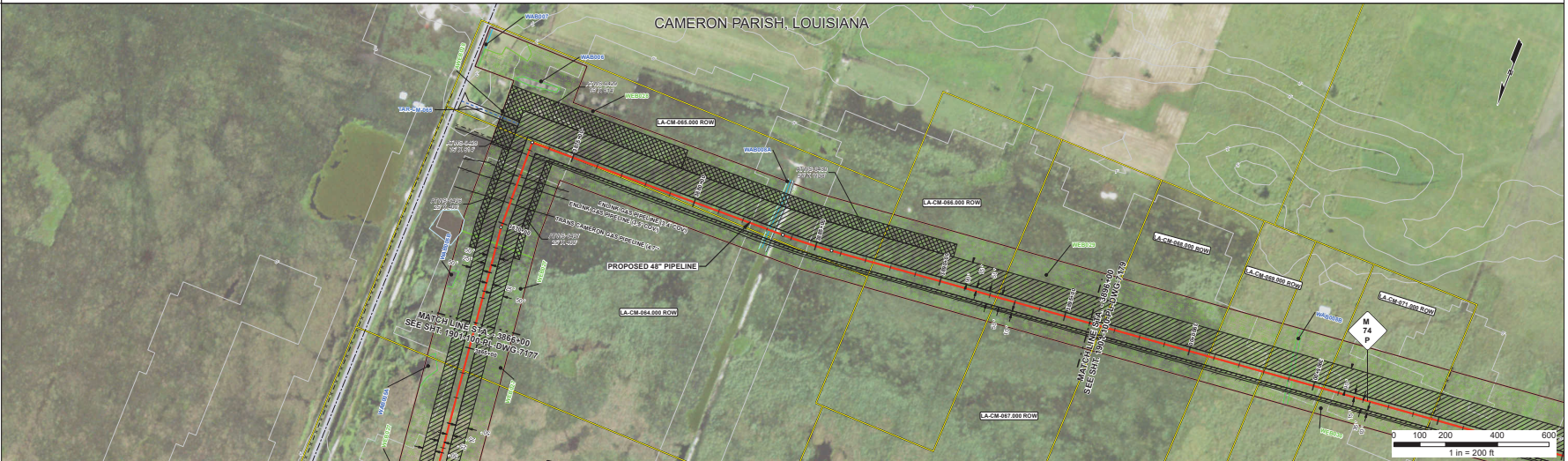
CLASS LOCATION	3866+00	CLASS 1	3886+00
PIPE MATERIAL	<b>NOT FOR USE</b>		

**ALIGNMENT DETAIL**

- CP EXPRESS PIPELINE
- PERMANENT EASEMENT
- TEMP WORKSPACE
- ADD. TEMP. WORKSPACE
- NATURAL GROUND PROFILE
- PERMANENT ACCESS ROAD
- TEMPORARY ACCESS ROAD
- SURVEY WETLANDS
- SURVEY STREAM DRAIN/WATERBODY
- WETLANDS
- PARCELS
- FACILITY SITES (CS, LAR, MAR)
- M/V SITES
- COUNTY / PARISH
- SURVEY CORRIDOR
- ROAD CENTERLINE
- RAILROAD
- FOREIGN PIPELINE
- FENCE
- STREAM RIVER
- OVERHEAD POWERLINE
- UNDERGROUND UTILITY
- TELEPHONE LINE
- SAWTOOTH BEWER
- EDGE OF ROAD/PAVEMENT/CURB
- EDGE OF WATER
- TOE OF BANK
- TOP OF BANK
- TREE LINE
- STRUCTURE
- CONTOURS
- REXTAG FOREIGN PIPELINE
- REXTAG TRANSMISSION LINE
- ROAD CL. (USER DATA)

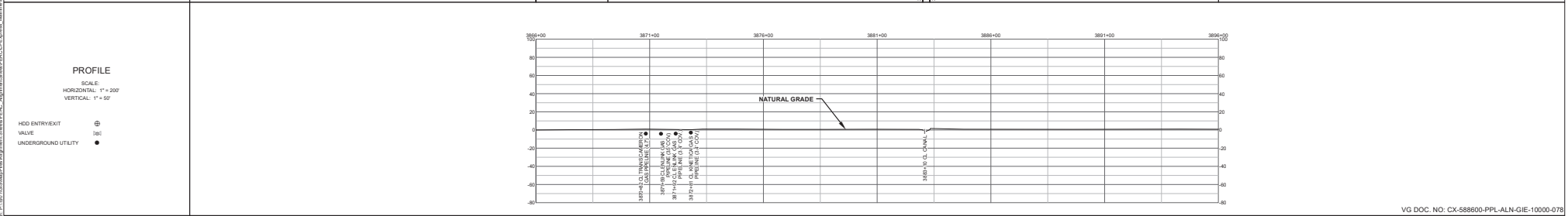
PI: VALVE (M/V) [Symbol] | SPREAD BREAK [Symbol] | UTILITY POLE [Symbol] | PIPELINE MILE POST [Symbol] | GUY ANCHOR [Symbol] | HDD ENTRY/EXIT [Symbol] | WELL [Symbol]

DATE OF AERIAL PHOTOGRAPHY: 1/24/2020



DEPTH OF COVER	3	4	3
REFERENCE DRAWING			

ENVIRONMENTAL SURVEY DATA	3866+00	3870+00	3874+00	3878+00	3882+00	3886+00
	WEB027	WEB028	WEB029			



HYDROSTATIC TEST SECTION			TEST SECTION - 2		VG DOC. NO. CX-588600-PPL-ALN-GIE-10000-078		
REFERENCE DRAWINGS		MATERIALS		REVISIONS		ENGINEERING APPROVALS	
DWG. NO.	DESCRIPTION	ITEM NO.	DESCRIPTION	DATE	DESCRIPTION	REV.	DATE
				01/27/2023	ISSUED FOR REVIEW	0	
						DRAWN BY: GULF 09/02/2021 CHECKED BY: CR 01/27/2023 DESIGN CHECKED BY: SC 01/27/2023 PROJECT ENGINEER: JB 01/27/2023 PROJECT MANAGER: JGDT 01/27/2023 CLIENT APP: VG 01/27/2023	
						CP EXPRESS FERC ALIGNMENT SHEET PROPOSED 48" PIPELINE STA. 3866+00 TO STA. 3886+00 ALIGNMENT SHEET LOC. CAMERON PARISH, LOUISIANA	
YEAR:	2022	SHEET:	78 OF 90	SCALE:	1" = 200'	DWG.:	1901-100-PL-DWG-7178
							REV. 0

RIGHT - OF - WAY										
SURVEY DATA										

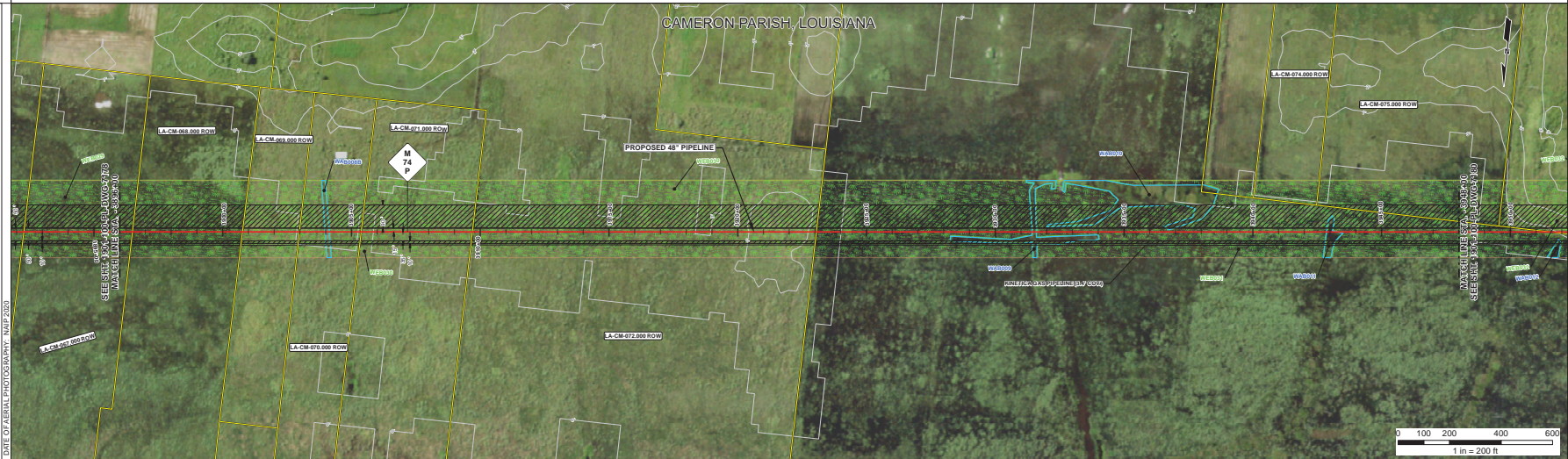
CLASS LOCATION	3896+00	CLASS 1								3948+00
PIPE MATERIAL	NOT FOR USE									

**ALIGNMENT DETAIL**

- CP EXPRESS PIPELINE
- PERMANENT EASEMENT
- TEMP WORKSPACE
- ADD. TEMP. WORKSPACE
- NATURAL GROUND PROFILE
- PERMANENT ACCESS ROAD
- TEMPORARY ACCESS ROAD
- SURVEY WETLANDS
- SURVEY STREAM DRAIN WATERBODY
- WETLANDS
- PARCELS
- FACILITY SITES (CS, LAR, MAR)
- MU SITES
- COUNTY / PARISH
- SURVEY CORRIDOR
- RAILROAD
- FOREIGN PIPELINE
- FENCE
- STREAM RIVER
- OVERHEAD POWERLINE
- UNDERGROUND UTILITY
- TELEPHONE LINE
- SANITARY SEWER
- EDGE OF ROAD/PAVEMENT/CURB
- EDGE OF WATER
- TOE OF BANK
- TOP OF BANK
- TREE LINE
- STRUCTURE
- CONTOURS
- REXTAG FOREIGN PIPELINE
- REXTAG TRANSMISSION LINE
- ROAD CL (TYPICAL DATA)

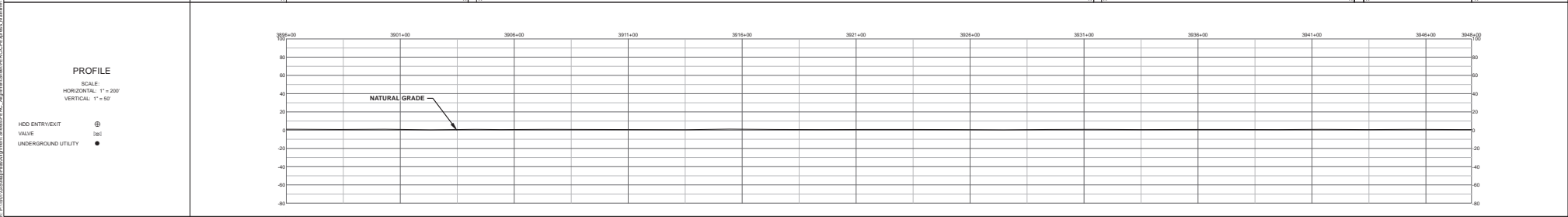
PI: VALVE (MV) [M], SPREAD BREAK [SB], UTILITY POLE [U], GUY ANCHOR [G], WELL [W]

STATIONING: PIPELINE MILE POST [M], HDD ENTR/EXIT [E]



DEPTH OF COVER	3	4	5	4	3	4	3	4	3	4
----------------	---	---	---	---	---	---	---	---	---	---

REFERENCE DRAWING										
ENVIRONMENTAL SURVEY DATA	WE800	WE800	WE800	WE800	WE800	WE800	WE800	WE800	WE800	WE800



REFERENCE DRAWINGS				MATERIALS				REVISIONS				ENGINEERING APPROVALS				<p style="text-align: center;"><b>CP EXPRESS</b>  <b>FERC ALIGNMENT SHEET</b>  <b>PROPOSED 48" PIPELINE</b>          STA. 3896+00 TO STA. 3948+00  <b>ALIGNMENT SHEET</b></p> <p style="text-align: center;"><b>LOC. CAMERON PARISH, LOUISIANA</b></p>			
DWG. NO.	DESCRIPTION	ITEM NO.	DESCRIPTION	QTY	ITEM NO.	DESCRIPTION	QTY	DATE	DESCRIPTION	REV	DATE	DESCRIPTION	REV	DATE	DESCRIPTION				
								09/15/2021	ISSUED FOR REVIEW	A	09/28/2021								
								09/29/2021	ISSUED FOR CLIENT REVIEW	B	09/29/2021								
								10/08/2021	ISSUED FOR FERC FILING	C	02/28/2022								
								02/28/2022	ISSUED FOR FERC FILING	D	02/28/2022								

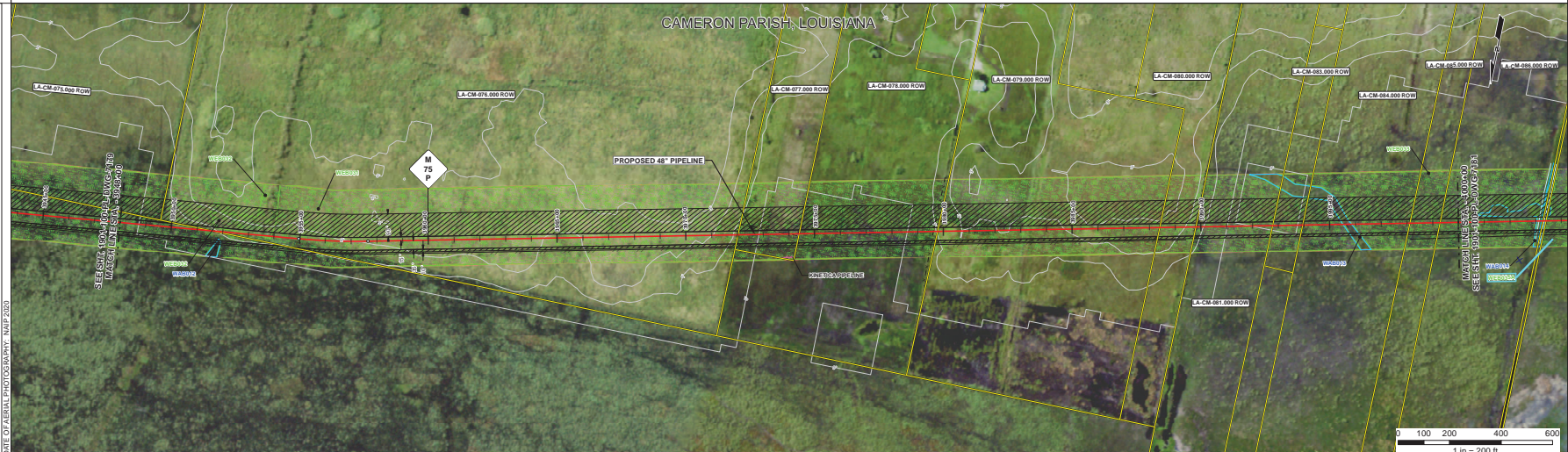
RIGHT - OF - WAY	CROSSING	TRACT NUMBERS	LA-CM-073.000 ROW	LA-CM-076.000 ROW	LA-CM-077.000 ROW	LA-CM-078.000 ROW	LA-CM-079.000 ROW	LA-CM-080.000 ROW	LA-CM-081.000 ROW	LA-CM-083.000 ROW	LA-CM-084.000 ROW	LA-CM-085.000 ROW	
RODAGE			25.4	32.1	34.4	32.6	32.3	8.4	18.1	7.1	25.1	7.1	21.4
SURVEY DATA					10125 TO MONUMENT 47 LT	10140 & 4 STRANDA NUMBERED WISSE FENCE	10142 & 4 STRANDA NUMBERED WISSE FENCE	10144 & 4 STRANDA NUMBERED WISSE FENCE	10145 & 4 STRANDA NUMBERED WISSE FENCE	10147 & 4 STRANDA NUMBERED WISSE FENCE			

CLASS LOCATION	S48+00	CLASS 1	4000+00
PIPE MATERIAL	NOT FOR USE		

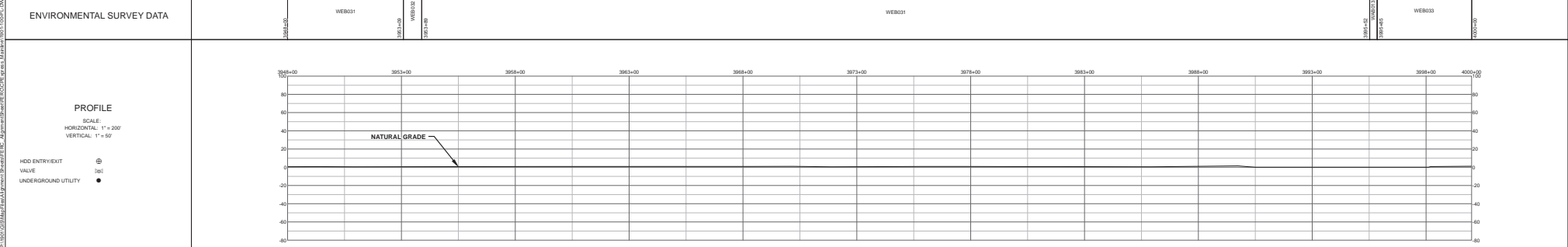
**ALIGNMENT DETAIL**

- CP EXPRESS PIPELINE
- PERMANENT EASEMENT
- TEMP WORKSPACE
- ADD. TEMP. WORKSPACE
- NATURAL GROUND PROFILE
- PERMANENT ACCESS ROAD
- TEMPORARY ACCESS ROAD
- SURVEY WETLANDS
- SURVEY STREAM DRAIN WATERBODY
- WETLANDS
- PARCELS
- FACILITY SITES (CS, LAR, MAR)
- MUV SITES
- COUNTY / PARISH
- SURVEY CORRIDOR
- ROAD CENTERLINE
- RAILROAD
- FOREIGN PIPELINE
- FENCE
- STREAM RIVER
- OVERHEAD POWERLINE
- UNDERGROUND UTILITY
- TELEPHONE LINE
- SEWER
- EDGE OF ROAD/PAVEMENT/CURB
- EDGE OF WATER
- TOE OF BANK
- TOP OF BANK
- TREE LINE
- STRUCTURE
- CONTOURS
- REXTAG FOREIGN PIPELINE
- REXTAG TRANSMISSION LINE
- ROAD-CL (USER DATA)

PI: VALVE (MUV) [M], SPREAD BREAK [S], UTILITY POLE [U], GUY ANCHOR [A], WELL [W]



DEPTH OF COVER	3	4	3
REFERENCE DRAWING			



HYDROSTATIC TEST SECTION	TEST SECTION - 2		
REFERENCE DRAWINGS	MATERIALS	REVISIONS	ENGINEERING APPROVALS
DWG. NO. DESCRIPTION	QTY ITEM NO. DESCRIPTION	DATE DESCRIPTION	DRAWN BY: GULF 09/02/2021
		09/16/2021 ISSUED FOR REVIEW	CHECKED BY: CR 02/28/2022
		09/29/2021 ISSUED FOR CLIENT REVIEW	DESIGN CHECKED BY: SC 02/28/2022
		10/29/2021 ISSUED FOR FERC FILING	PROJECT ENGINEER: JB 02/28/2022
		02/28/2022 ISSUED FOR FERC FILING	PROJECT MANAGER: JCMR 02/28/2022
			CLIENT APP: WJ 02/28/2022
		<b>CP EXPRESS</b> FERC ALIGNMENT SHEET PROPOSED 48" PIPELINE STA. 3948+00 TO STA. 4000+00 ALIGNMENT SHEET LOC. CAMERON PARISH, LOUISIANA	



YEAR: 2022 SHEET: 80 OF 90 SCALE: 1" = 200' DWG. 1901-100-PL-DWG-7180 REV. D

I:\Projects\1901-100-PL-DWG-7180\1901-100-PL-DWG-7180-1100-PL-DWG-7180.dwg  
 10/28/2021 10:00:00 AM  
 User: JCMR

RIGHT-OF-WAY	CROSSING									
TRACT NUMBERS	ROADAGE									
SURVEY DATA	CLASS LOCATION									
PIPE MATERIAL	CLASS 1									

NOT FOR USE

**ALIGNMENT DETAIL**

- CP EXPRESS PIPELINE
- PERMANENT EASEMENT
- TEMP WORKSPACE
- ADD. TEMP. WORKSPACE
- NATURAL GROUND PROFILE
- PERMANENT ACCESS ROAD
- TEMPORARY ACCESS ROAD
- SURVEY WETLANDS
- SURVEY STREAM DRAIN WATERBODY
- WETLANDS
- PARCELS
- FACILITY SITES (CS, LAR, MAR)
- MU SITES
- COUNTY / PARISH
- SURVEY CORRIDOR
- RAILROAD
- FOREIGN PIPELINE
- FENCE
- STREAM RIVER
- OVERHEAD POWERLINE
- UNDERGROUND UTILITY
- TELEPHONE LINE
- SANITARY SEWER
- EDGE OF ROAD/PAVEMENT/CURB
- EDGE OF WATER
- TOE OF BANK
- TOP OF BANK
- TREE LINE
- STRUCTURE
- CONTOURS
- REXTAG FOREIGN PIPELINE
- REXTAG TRANSMISSION LINE
- ROAD-CL (USER DATA)

PI: VALVE (MV) [80]  
STATIONING: SPREAD BREAK [80]  
PIPELINE MILE POST: UTILITY POLE [80]  
HDD ENTRY/EXIT: GUY ANCHOR [80], WELL [80]



**DEPTH OF COVER**

REFERENCE DRAWING	3	4	4	5	5	5
-------------------	---	---	---	---	---	---

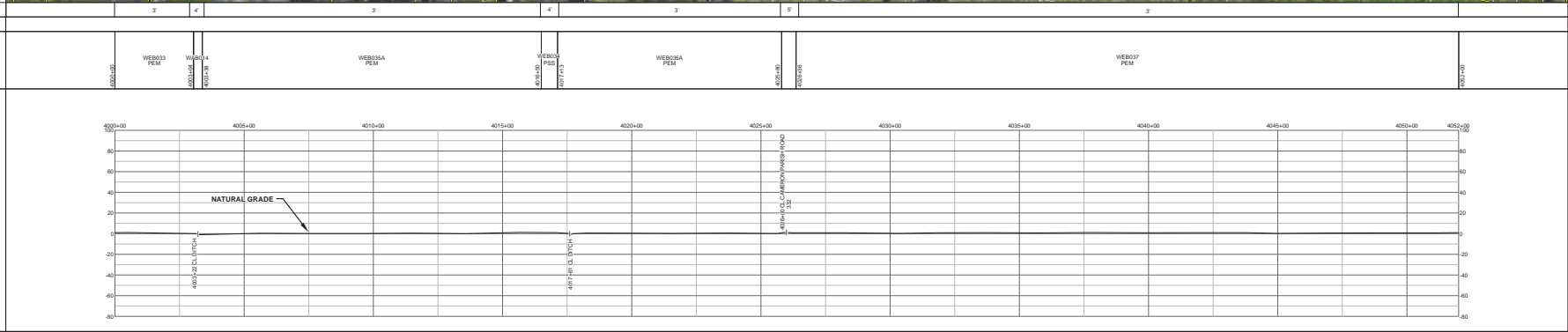
**ENVIRONMENTAL SURVEY DATA**

WEBO33 PEM	WEBO34	WEBO35	WEBO36	WEBO37
------------	--------	--------	--------	--------

**PROFILE**

SCALE: HORIZONTAL: 1" = 200'  
VERTICAL: 1" = 50'

HDD ENTRY/EXIT: [80]  
VALVE: [80]  
UNDERGROUND UTILITY: [80]



REFERENCE DRAWINGS		MATERIALS		REVISIONS		ENGINEERING APPROVALS	
DWG. NO.	DESCRIPTION	ITEM NO.	DESCRIPTION	DATE	DESCRIPTION	REV	DESCRIPTION
				03/15/2021	ISSUED FOR REVIEW	A	
				09/29/2021	ISSUED FOR CLIENT REVIEW	B	
				10/26/2021	ISSUED FOR PERC FILING	C	
				02/28/2022	ISSUED FOR PERC FILING	D	

DRAWN BY:	GULF	09/02/2021
CHECKED BY:	CR	02/28/2022
DESIGN CHECKED BY:	SC	02/28/2022
PROJECT ENGINEER:	JB	02/28/2022
PROJECT MANAGER:	JCMR	02/28/2022
CLIENT APP:	BYB	02/28/2022

CP EXPRESS  
FERC ALIGNMENT SHEET  
PROPOSED 48" PIPELINE  
STA. 4000+00 TO STA. 4052+00  
ALIGNMENT SHEET  
LOC. CAMERON PARISH, LOUISIANA

**CP EXPRESS**  
**GULF Companies**

YEAR: 2022 SHEET: 81 OF 90 SCALE: 1" = 200' DWG. 1901-100-PL-DWG-7181 REV. D

RIGHT - OF - WAY	CROSSING	LA-CM-095.000 ROW	LA-CM-096.000 ROW	LA-CM-097.000 ROW	LA-CM-098.000 ROW	LA-CM-099.000 ROW	LA-CM-100.000 ROW	LA-CM-104.000 ROW	LA-CM-105.000 ROW	LA-CM-106.000 ROW	LA-CM-107.000 ROW	LA-CM-108.000 ROW	LA-CM-109.000 ROW	LA-CM-110.000 ROW	LA-CM-111.000 ROW	LA-CM-112.000 ROW	LA-CM-113.000 ROW	LA-CM-114.000 ROW	LA-CM-115.000 ROW	
TRACT NUMBERS	ROADAGE	4.0	27.0	5.0	28.0	12.0	103.0	10.0	4.0	10.0	10.0	10.0	10.0	10.0	10.0	10.0	10.0	10.0	10.0	10.0

SURVEY DATA	4052+00	4052+00	4052+00	4052+00	4052+00	4052+00	4052+00	4052+00	4052+00	4052+00	4052+00	4052+00	4052+00	4052+00	4052+00	4052+00	4052+00	4052+00	4052+00	4052+00	4104+00
CLASS LOCATION	CLASS 1																				
PIPE MATERIAL	NOT FOR USE																				

**ALIGNMENT DETAIL**

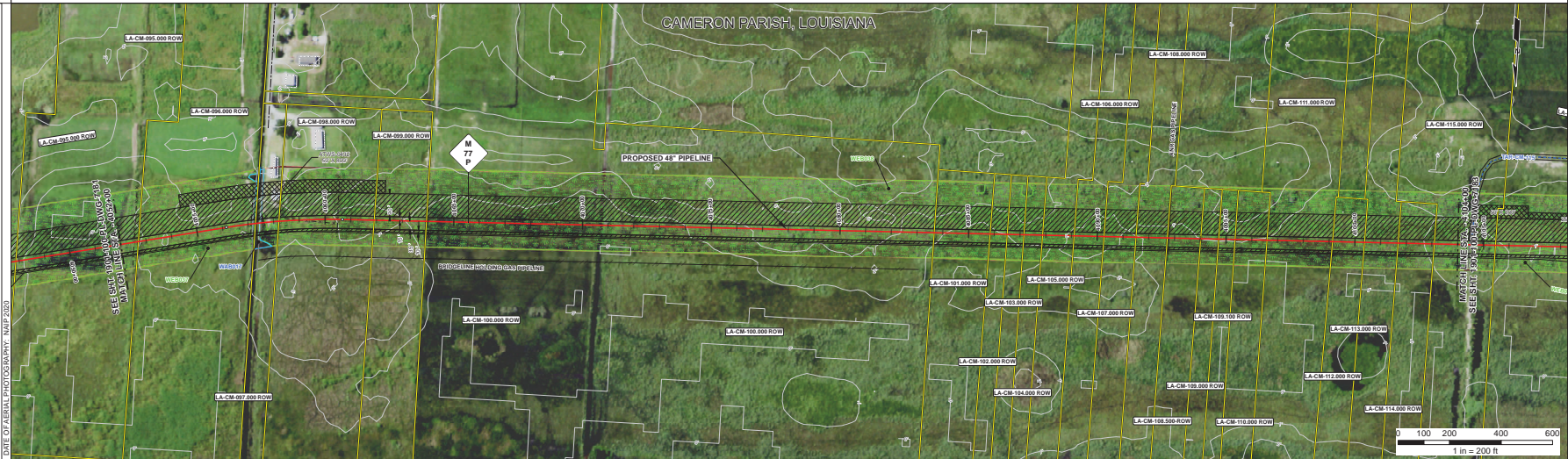
- CP EXPRESS PIPELINE
- PERMANENT EASEMENT
- TEMP WORKSPACE
- ADD. TEMP. WORKSPACE
- NATURAL GROUND PROFILE
- PERMANENT ACCESS ROAD
- TEMPORARY ACCESS ROAD
- SURVEY WETLANDS
- SURVEY STREAM DRAIN WATERBODY
- WETLANDS
- PARCELS
- FACILITY SITES (CS, LAR, MAR)
- MU SITES
- COUNTY / PARISH
- SURVEY CORRIDOR
- ROAD CENTERLINE
- RAILROAD
- FOREIGN PIPELINE
- FENCE
- STREAM RIVER
- SANITARY SEWER
- UNDERGROUND UTILITY
- TELEPHONE LINE
- EDGE OF ROAD/PAVEMENT/CURB
- EDGE OF WATER
- TOP OF BANK
- TREE LINE
- STRUCTURE
- CONTOURS
- REXTAG FOREIGN PIPELINE
- REXTAG TRANSMISSION LINE
- ROAD-CL. (FISHER DATA)

PI: VALVE (M/V) [80]

STATIONING: SPREAD BREAK [80]

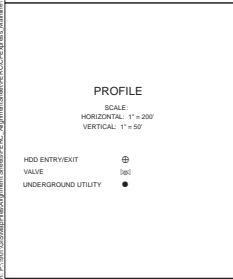
PIPELINE MILE POST: UTILITY POLE [80]

HDD ENTRY/EXIT: GUY ANCHOR [80], WELL [80]



DEPTH OF COVER	3	4	3
----------------	---	---	---

REFERENCE DRAWING	4052+00	4057+00	4062+00	4067+00	4072+00	4077+00	4082+00	4087+00	4092+00	4097+00	4102+00	4104+00
ENVIRONMENTAL SURVEY DATA	4052+00	4057+00	4062+00	4067+00	4072+00	4077+00	4082+00	4087+00	4092+00	4097+00	4102+00	4104+00



HYDROSTATIC TEST SECTION	TEST SECTION - 2
--------------------------	------------------

REFERENCE DRAWINGS		MATERIALS		REVISIONS		ENGINEERING APPROVALS	
DWG. NO.	DESCRIPTION	ITEM NO.	DESCRIPTION	DATE	DESCRIPTION	REV	DESCRIPTION
				03/15/2021	ISSUED FOR REVIEW	A	
				09/29/2021	ISSUED FOR CLIENT REVIEW	B	
				10/28/2021	ISSUED FOR FERC FILING	C	
				02/28/2022	ISSUED FOR FERC FILING	D	

CP EXPRESS  
 FERC ALIGNMENT SHEET  
 PROPOSED 48" PIPELINE  
 STA. 4052+00 TO STA. 4104+00  
 ALIGNMENT SHEET  
 LOC. CAMERON PARISH, LOUISIANA

**CP EXPRESS**  
**GULF Companies**

YEAR: 2022 SHEET: 82 OF 90 SCALE: 1" = 200' DWG. 1901-100-PL-DWG-7182 REV. D



RIGHT - OF - WAY	CROSSING				
TRACT NUMBERS	L-CM-133.000 ROW	L-CM-134.000 ROW	L-CM-135.000 ROW	L-CM-136.000 ROW	
ROADAGE	4156+00	4161+00	4166+00	4171+00	4176+00
SURVEY DATA	<p>4156+00 ELEVATION 4156+00 BK + CHM (2.127)</p> <p>4156+10 CL. CASE PIPELINE (8.8' DIA.)</p> <p>4156+20 CL. DITCH WATER</p> <p>4156+30 EDGE OF WATER</p> <p>4156+40 10' OF CASE PIPELINE</p> <p>4156+50 10' OF SOLE</p> <p>4156+60 EDGE OF GRAVEL LEASE ROAD</p> <p>4156+70 ROAD OF CONTRACT LEASE</p> <p>4156+80 10' OF CASE PIPELINE (8.8' DIA.)</p> <p>4156+90 10' OF SOLE</p> <p>4157+00 EDGE OF GRAVEL LEASE ROAD</p> <p>4157+10 ROAD OF CONTRACT LEASE</p> <p>4157+20 10' OF CASE PIPELINE (8.8' DIA.)</p> <p>4157+30 10' OF SOLE</p> <p>4157+40 EDGE OF GRAVEL LEASE ROAD</p> <p>4157+50 ROAD OF CONTRACT LEASE</p> <p>4157+60 10' OF CASE PIPELINE (8.8' DIA.)</p> <p>4157+70 10' OF SOLE</p>				

CLASS LOCATION	4156+00	CLASS 1	4208+00
PIPE MATERIAL	<b>NOT FOR USE</b>		

**ALIGNMENT DETAIL**

- CP EXPRESS PIPELINE
- PERMANENT EASEMENT
- TEMP WORKSPACE
- ADD. TEMP WORKSPACE
- NATURAL GROUND PROFILE
- PERMANENT ACCESS ROAD
- TEMPORARY ACCESS ROAD
- SURVEY WETLANDS
- SURVEY STREAM DRAIN/WATERBODY
- WETLANDS
- PARCELS
- FACILITY SITES (CS, LAR, M&R)
- MV SITES
- COUNTY / PARISH
- SURVEY CORRIDOR
- ROAD CENTERLINE
- RAILROAD
- FOREIGN PIPELINE
- FENCE
- STREAM RIVER
- OVERHEAD POWERLINE
- UNDERGROUND UTILITY
- TELEPHONE LINE
- SANITARY SEWER
- EDGE OF ROAD/PAVEMENT/CURB
- EDGE OF WATER
- TOE OF BANK
- TOP OF BANK
- TREE LINE
- STRUCTURE
- CONTROLS
- REXTAG FOREIGN PIPELINE
- REXTAG TRANSMISSION LINE
- ROAD CL. (FISHER DATA)

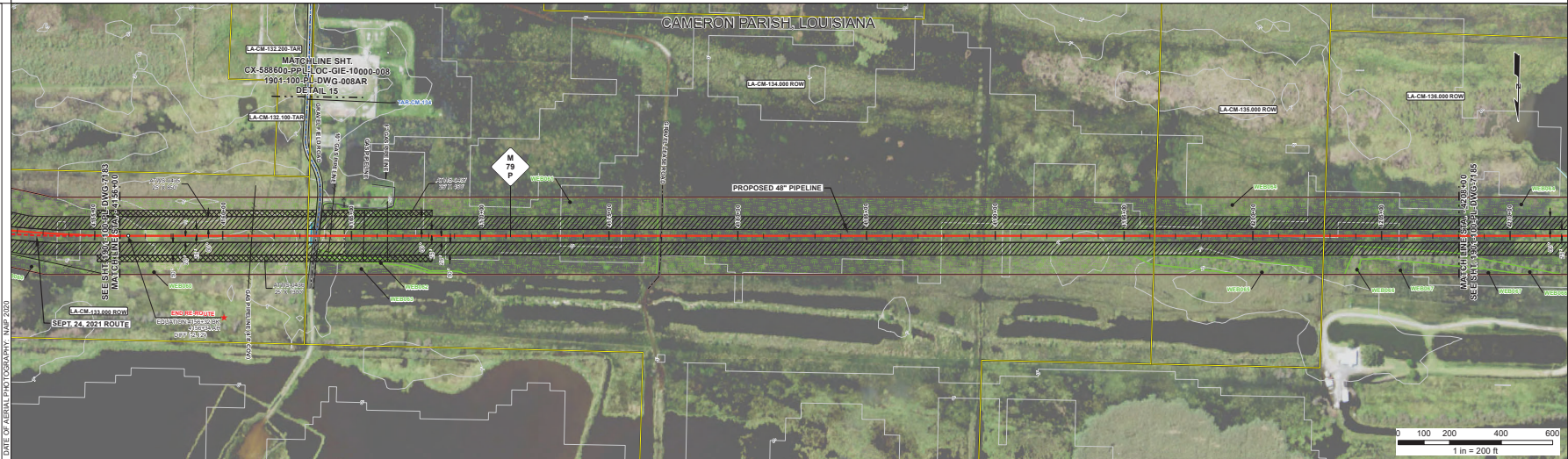
PI VALVE (MV) [Symbol]

STATIONING SPREAD BREAK [Symbol]

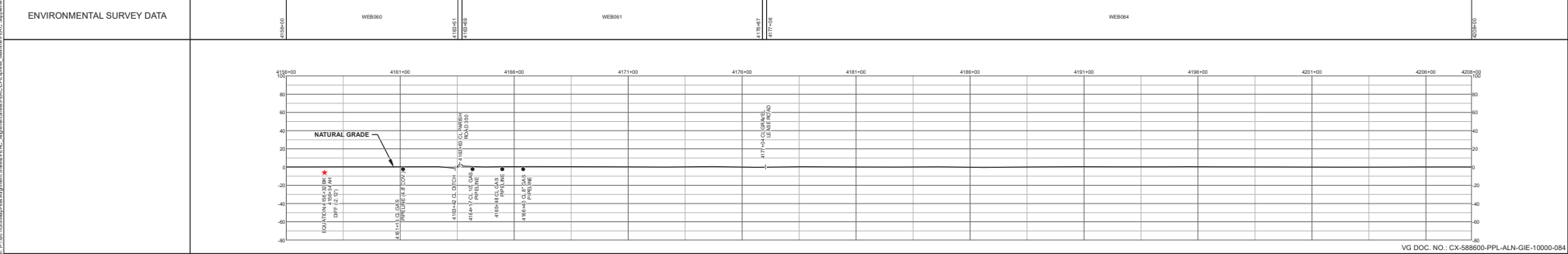
PIPELINE MILE POST UTILITY POLE [Symbol]

HDD ENTRY/EXIT GUY ANCHOR WELL [Symbol]

DATE OF AERIAL PHOTOGRAPHY: 11/14/2020



DEPTH OF COVER	7	5	3	5	2
REFERENCE DRAWING					



REFERENCE DRAWINGS		MATERIALS		TEST SECTION - 2		REVISIONS		ENGINEERING APPROVALS		<p>CP EXPRESS FERC ALIGNMENT SHEET PROPOSED 48" PIPELINE STA. 4156+00 TO STA. 4208+00 ALIGNMENT SHEET</p> <p>LOC. CAMERON PARISH, LOUISIANA</p>		
DWG. NO.	DESCRIPTION	ITEM NO.	DESCRIPTION	QTY	ITEM NO.	DESCRIPTION	DATE	DESCRIPTION	REV	DRAWN BY:	GULF	
							01/27/2023	ISSUED FOR PERMIT	0	CHECKED BY:	CR	01/27/2023
										DESIGN CHECKED BY:	SC	01/27/2023
										PROJECT ENGINEER:	JB	01/27/2023
										PROJECT MANAGER:	JCGT	01/27/2023
										CLIENT APP:	VS	01/27/2023

RIGHT - OF - WAY TRACT NUMBERS	CROSSING		L-AM-136.000 ROW	4200+00
ROADAGE			359.7	
SURVEY DATA		4219+00 EDGE OF WATER 4219+10 CL CANAL 4219+20 TOE OF BANK 4219+30 TOE OF BANK 4219+40 CL ACCESS ROAD 4219+50 TOE OF BANK 4219+60 TOE OF BANK 4219+70 TOE OF BANK 4219+80 TOE OF BANK 4219+90 TOE OF BANK 4219+00 POWER POLE 21' L 4219+10 EDGE OF WATER 4219+20 EDGE OF WATER 4224+00 EDGE OF WATER 4224+10 EDGE OF WATER 4224+20 EDGE OF WATER		4260+00

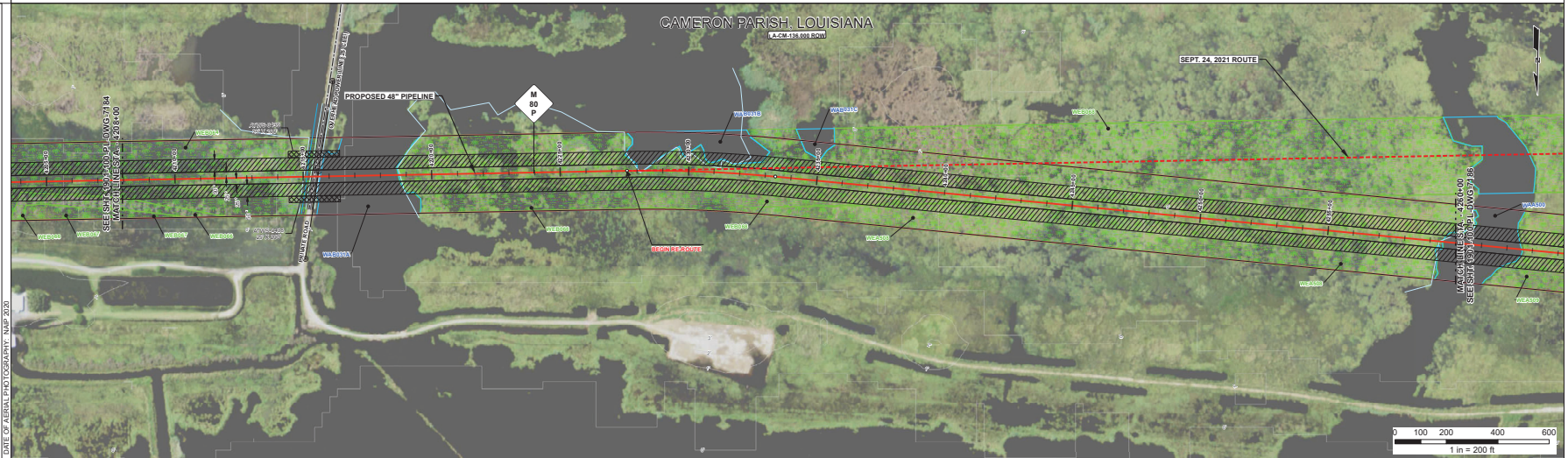
CLASS LOCATION	4208+00	CLASS 1	4260+00
PIPE MATERIAL	NOT FOR USE		

**ALIGNMENT DETAIL**

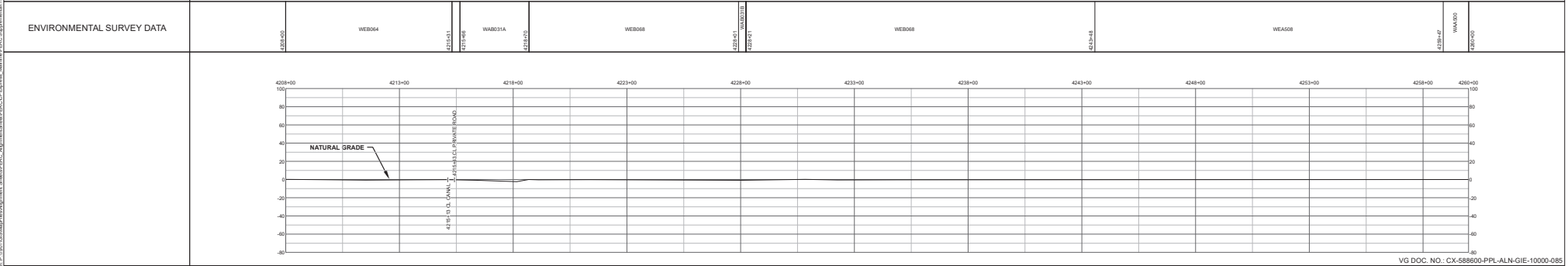
- CP EXPRESS PIPELINE
- PERMANENT EASEMENT
- TEMP WORKSPACE
- ADD. TEMP WORKSPACE
- NATURAL GROUND PROFILE
- PERMANENT ACCESS ROAD
- TEMPORARY ACCESS ROAD
- SURVEY WETLANDS
- SURVEY STREAM DRAIN WATERBODY
- WETLANDS
- PARCELS
- FACILITY SITES (CL, LAR, M&R)
- M&V SITES
- COUNTY / PARISH
- SURVEY CORRIDOR
- ROAD CENTERLINE
- RAILROAD
- FOREIGN PIPELINE
- FENCE
- STREAM RIVER
- OVERHEAD POWERLINE
- UNDERGROUND UTILITY
- TELEPHONE LINE
- SAWDRY SEWER
- EDGE OF ROAD/PAVEMENT/CURB
- EDGE OF WATER
- TOE OF BANK
- TOP OF BANK
- TREE LINE
- STRUCTURE
- CONTOURS
- REXTAG FOREIGN PIPELINE
- REXTAG TRANSMISSION LINE
- ROAD CL (TIGER DATA)

P1 VALVE (M&V) [R]  
 STATIONING | SPREAD BREAK [R]  
 PIPELINE MILE POST | UTILITY POLE [R]  
 HDD ENTRY/EXIT | GUY ANCHOR [R]  
 WELL [R]

DATE OF AERIAL PHOTOGRAPHY: 7/16/2020



DEPTH OF COVER	0'	1'	2'	3'	4'	5'
REFERENCE DRAWING						



REFERENCE DRAWINGS		MATERIALS		REVISIONS		ENGINEERING APPROVALS	
DWG NO.	DESCRIPTION	ITEM NO.	DESCRIPTION	DATE	DESCRIPTION	REV	DATE
1901-100-PL-DWG-016	MARSH PUSH WATERBODY CROSSING			02/07/2023	ISSUED FOR PERMIT	0	09/02/2021
				05/19/2023	ISSUED FOR PERMIT	1	05/19/2023

DRAWN BY:	WS	09/02/2021
CHECKED BY:	SC	05/19/2023
DESIGN CHECKED BY:	YK	05/19/2023
PROJECT ENGINEER:	JCGT	05/19/2023
PROJECT MANAGER:	VS	05/19/2023
CLIENT APP:		

**CP EXPRESS**  
 FERC ALIGNMENT SHEET  
 PROPOSED 48" PIPELINE  
 STA. 4208+00 TO STA. 4260+00  
 ALIGNMENT SHEET  
 LOC. CAMERON PARISH, LOUISIANA

YEAR:	2023	SHEET:	85 OF 90	SCALE:	1" = 200'	DWG:	1901-100-PL-DWG-7185	REV:	1
-------	------	--------	----------	--------	-----------	------	----------------------	------	---



**RIGHT - OF - WAY**

TRACT NUMBERS

ROADAGE

ROISSAGE

4260+00

CLASS 1

4312+00

L-AM-158.000 ROW

310.2

4312+00

4260+00

4312+00

**SURVEY DATA**

CLASS LOCATION

4260+00

CLASS 1

4312+00

**PIPE MATERIAL**

NOT FOR USE

**ALIGNMENT DETAIL**

CP EXPRESS PIPELINE

PERMANENT EASEMENT

TEMP WORKSPACE

ACC. TEMP. WORKSPACE

NATURAL GROUND PROFILE

PERMANENT ACCESS ROAD

TEMPORARY ACCESS ROAD

SURVEY WETLANDS

SURVEY STREAM DRAIN WATERBODY

NW WETLANDS

PARCELS

FACILITY SITES (CS, LAR, MAR)

M.V. SITES

COUNTY / PARISH

SURVEY CORRIDOR

ROAD CENTERLINE

RAILROAD

FOREIGN PIPELINE

FENCE

STREAM RIVER

OVERHEAD POWERLINE

UNDERGROUND UTILITY

TELEPHONE LINE

SANITARY SEWER

EDGE OF ROAD/PAVEMENT/CURB

EDGE OF WATER

TOE OF BANK

TOP OF BANK

TREE LINE

STRUCTURE

CONTOURS

REXTAG FOREIGN PIPELINE

REXTAG TRANSMISSION LINE

ROAD CL (FISHER DATA)

DATE OF AERIAL PHOTOGRAPHY: MAP 2020

P1 VALVE (M.V.)

STATIONING | SPREAD BREAK

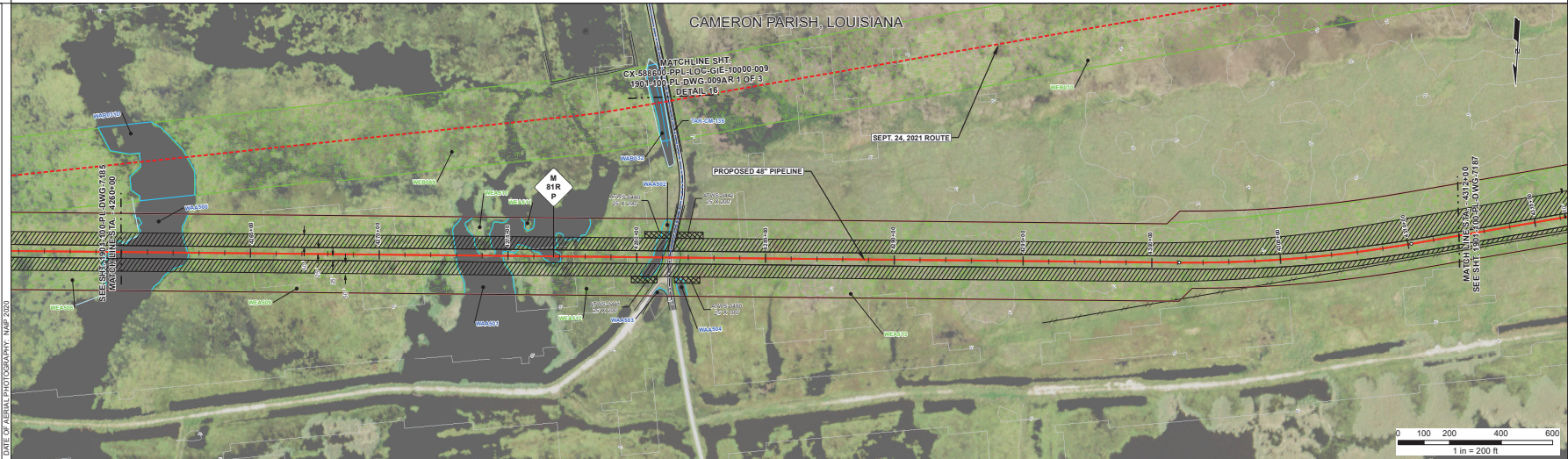
PIPELINE MILE POST

HDD ENTRY/EXIT

UTILITY POLE

GUY ANCHOR

WELL



**DEPTH OF COVER**

REFERENCE DRAWING

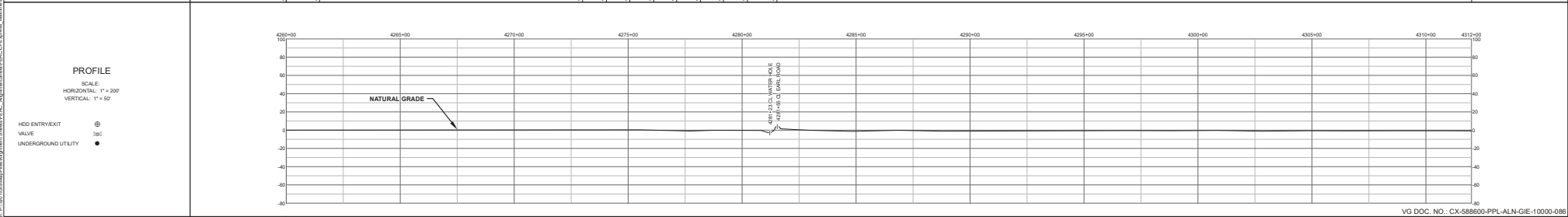
2 4 5 6 7 8

**ENVIRONMENTAL SURVEY DATA**

WEAS05 WEAS09

WEAS10 WEAS11 WEAS12 WEAS13 WEAS14 WEAS15 WEAS16 WEAS17 WEAS18 WEAS19 WEAS20 WEAS21 WEAS22

WEAS23 WEAS24 WEAS25 WEAS26 WEAS27 WEAS28 WEAS29 WEAS30 WEAS31 WEAS32 WEAS33 WEAS34 WEAS35 WEAS36 WEAS37 WEAS38 WEAS39 WEAS40



**HYDROSTATIC TEST SECTION**

REF. DWG. NO.	DESCRIPTION	ITEM NO.	DESCRIPTION	QTY	ITEM NO.	DESCRIPTION	QTY	DATE	DESCRIPTION	REV	ENGINEERING APPROVALS	CP EXPRESS FERC ALIGNMENT SHEET PROPOSED 48" PIPELINE STA. 4260+00 TO STA. 4312+00 ALIGNMENT SHEET LOC. CAMERON PARISH, LOUISIANA	 
1901-100-PL-DWG-016	MARSH PUSH WATERBODY CROSSING							03/07/2023	ISSUED FOR PERMIT	0	DRAWN BY: GULF 09/02/2021 CHECKED BY: WS 07/05/2023		
								05/19/2023	DESIGN CHECKED BY: SC 07/05/2023	1	PROJECT ENGINEER: YK 07/05/2023		
								07/05/2023	ISSUED FOR PERMIT	2	PROJECT MANAGER: JCGT 07/05/2023		
									CLIENT APP: VS 07/05/2023				

Project No. 1901-100-PL-DWG-7186-Rev. 2 - Camerons Parish, Louisiana  
 Project Name: CP Express FERC Alignment Sheet Proposed 48" Pipeline  
 Date: 07/05/2023

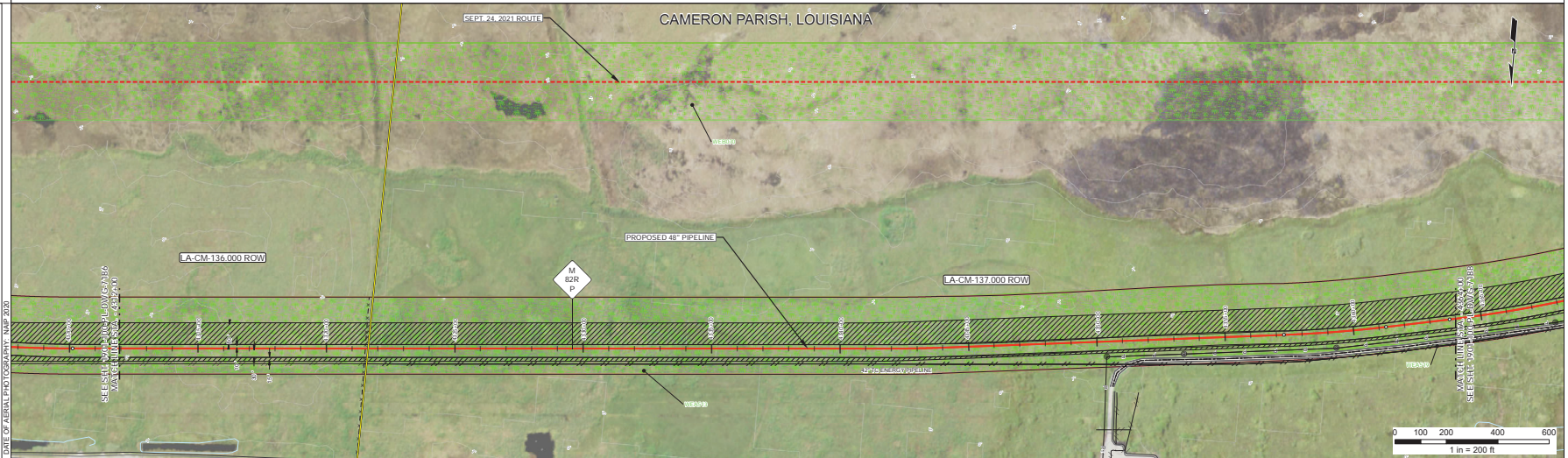
<b>RIGHT - OF - WAY</b> TRACT NUMBERS	4312+00	4317+00	4321+00	4326+00	4331+00	4336+00	4341+00	4346+00
<b>CROSSING</b>								
<b>ROADSAGE</b>								
<b>CLASS LOCATION</b>	4312+00	CLASS 1					4364+00	

**NOT FOR USE**

**ALIGNMENT DETAIL**

CP EXPRESS PIPELINE	[Symbol]
PERMANENT EASEMENT	[Symbol]
TEMP WORKSPACE	[Symbol]
ADD. TEMP. WORKSPACE	[Symbol]
NATURAL GROUND PROFILE	[Symbol]
PERMANENT ACCESS ROAD	[Symbol]
TEMPORARY ACCESS ROAD	[Symbol]
SURVEY WETLANDS	[Symbol]
SURVEY STREAM DRAIN WATERBODY	[Symbol]
WETLANDS	[Symbol]
PARCELS	[Symbol]
FACILITY SITES (CS, LAR, M&R)	[Symbol]
M.V. SITES	[Symbol]
COUNTY / PARISH	[Symbol]
SURVEY CORRIDOR	[Symbol]
ROAD CENTERLINE	[Symbol]
RAILROAD	[Symbol]
FOREIGN PIPELINE	[Symbol]
FENCE	[Symbol]
STREAM RIVER	[Symbol]
OVERHEAD POWERLINE	[Symbol]
UNDERGROUND UTILITY	[Symbol]
TELEPHONE LINE	[Symbol]
SEWAGE/SANITARY SEWER	[Symbol]
EDGE OF ROAD/PAVEMENT/CURB	[Symbol]
EDGE OF WATER	[Symbol]
TOE OF BANK	[Symbol]
TOP OF BANK	[Symbol]
TREE LINE	[Symbol]
STRUCTURE	[Symbol]
RAILROAD	[Symbol]
REXTAG FOREIGN PIPELINE	[Symbol]
REXTAG TRANSMISSION LINE	[Symbol]
ROAD CL (TIGER DATA)	[Symbol]

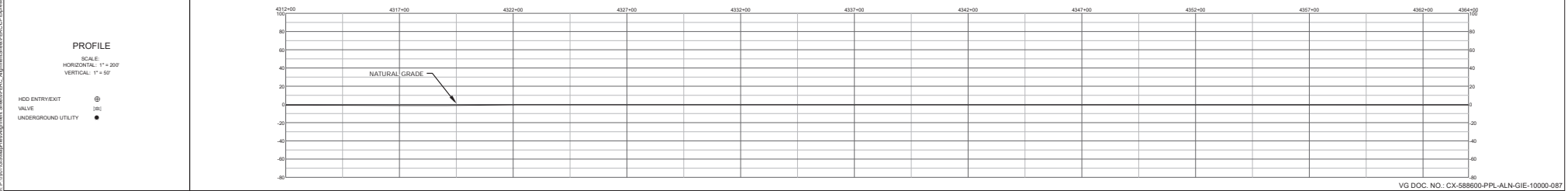
P1 VALVE (M.V.) [SR] [BR]  
STATIONING [SR] SPREAD BREAK [BR]  
PIPELINE MILE POST [SR] UTILITY POLE [BR]  
HOD ENTRY/EXIT [SR] GUY ANCHOR [BR]  
WELL [SR] WELL [BR]



**DEPTH OF COVER**

**REFERENCE DRAWING**

**ENVIRONMENTAL SURVEY DATA**



**HYDROSTATIC TEST SECTION**

REFERENCE DRAWINGS		MATERIALS		REVISIONS		ENGINEERING APPROVALS	
DWG. NO.	DESCRIPTION	ITEM NO.	DESCRIPTION	DATE	DESCRIPTION	REV	DATE
				02/07/2023	ISSUED FOR PERMIT	0	05/19/2023
				05/19/2023	ISSUED FOR PERMIT	1	05/19/2023

**CP EXPRESS**  
FERC ALIGNMENT SHEET  
PROPOSED 48" PIPELINE  
STA. 4312+00 TO STA. 4364+00  
ALIGNMENT SHEET

**GULF Companies**

LOC. CAMERON PARISH, LOUISIANA

YEAR: 2023 | SHEET: 87 OF 90 | SCALE: 1" = 200'

VG DOC. NO.: CX-588600-PPL-ALN-GIE-10000-087

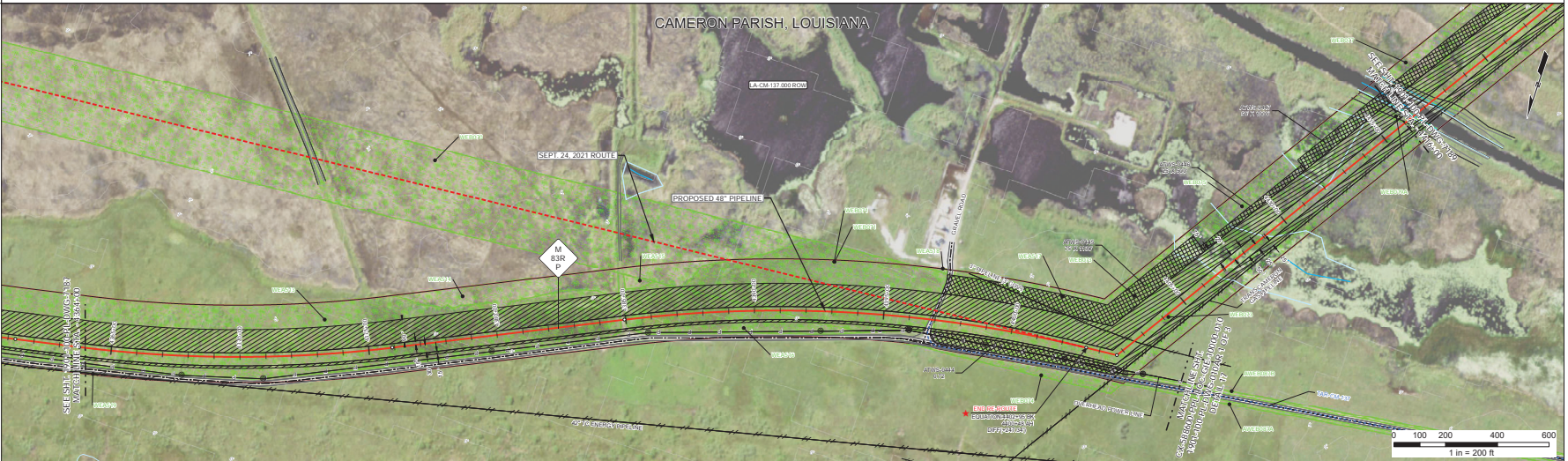
RIGHT - OF - WAY TRACT NUMBERS	LACM-137 200 ROW		4416+00
ROADSAGE	339.2		
SURVEY DATA	4370+00 TOE OF SLOPE 4370+00 TOP OF SLOPE 4370+00 TOE OF SLOPE  4390+00 EDGE OF 21' TRUCK ROAD 4390+00 EDGE OF 21' TRUCK ROAD  4390+04 POWER POLE, 180' RET.  4390+06 POWER POLE, 150' RET. 4390+08 EDGE OF GRAVEL ROAD 4390+08 EDGE OF GRAVEL ROAD 4390+08 EDGE OF GRAVEL ROAD  4390+09 POWER POLE, 190' RET.  4390+17 POWER POLE, 144' RET.  SECTION 24 OF 24 (SEE SHEET 88-09 FOR ALL 4400+00 TOE OF SLOPE 4400+00 TOP OF SLOPE 4400+00 TOE OF SLOPE 4400+00 TOE OF SLOPE 4400+00 TOE OF SLOPE 4410+00 EDGE OF WATER 4410+00 EDGE OF WATER  4410+00 EDGE OF WATER 4410+00 EDGE OF WATER  4410+00 EDGE OF WATER 4410+00 EDGE OF WATER		
CLASS LOCATION	4364+00	CLASS 1	4416+00
PIPE MATERIAL	NOT FOR USE		

**ALIGNMENT DETAIL**

- CP EXPRESS PIPELINE
- PERMANENT EASEMENT
- TEMP WORKSPACE
- ADD. TEMP. WORKSPACE
- NATURAL GROUND PROFILE
- PERMANENT ACCESS ROAD
- TEMPORARY ACCESS ROAD
- SURVEY WETLANDS
- SURVEY STREAM DRAIN WATERBODY
- WETLANDS
- PARCELS
- FACILITY SITES (CS, LAR, M&R)
- MV SITES
- COUNTY / PARISH
- SURVEY CORRIDOR
- ROAD CENTERLINE
- RAILROAD
- FOREIGN PIPELINE
- FENCE
- STREAM RIVER
- OVERHEAD POWERLINE
- UNDERGROUND UTILITY
- TELEPHONE LINE
- SANITARY SEWER
- EDGE OF ROAD/PAVEMENT/CURB
- EDGE OF WATER
- TOE OF BANK
- TOP OF BANK
- TREE LINE
- STRUCTURE
- CONTROLS
- REXTAG FOREIGN PIPELINE
- REXTAG TRANSMISSION LINE
- ROAD-CL (FISHER DATA)

PI VALVE (MV) (SR) [R]  
 STATIONING | SPREAD BREAK [R]  
 PIPELINE MILE POST [R]  
 HOD ENTRYEXIT [R] UTY POLE [R] GUY ANCHOR [R] WELL [R]

DATE OF AERIAL PHOTOGRAPHY: MARCH 2020

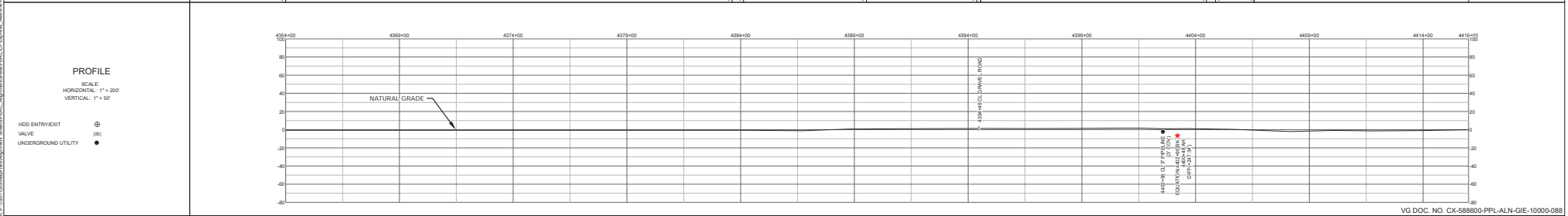


DEPTH OF COVER

3'	0'	0'
----	----	----

REFERENCE DRAWING

WEA415	WEA416	WEA417	WEA418	WEA419	WEA420	WEA421	WEA422	WEA423	WEA424	WEA425
--------	--------	--------	--------	--------	--------	--------	--------	--------	--------	--------



HYDROSTATIC TEST SECTION

REFERENCE DRAWINGS	ITEM NO.	DESCRIPTION	MATERIALS	DESCRIPTION	QTY	DATE	REVISIONS	ENGINEERING APPROVALS
DWG NO.	DESCRIPTION	ITEM NO.	DESCRIPTION	QTY	DATE	DESCRIPTION	REV	DRAWN BY: GULF 09/02/2021
						ISSUED FOR PERMIT	0	CHECKED BY: WS 05/19/2023
						ISSUED FOR PERMIT	1	DESIGN CHECKED BY: SC 05/19/2023
								PROJECT ENGINEER: YK 05/19/2023
								PROJECT MANAGER: JCGT 05/19/2023
								CLIENT APP: VS 05/19/2023

TEST SECTION - 2

TEST SECTION - 3	
------------------	--

**CP EXPRESS**  
 FERC ALIGNMENT SHEET  
 PROPOSED 48" PIPELINE  
 STA. 4364+00 TO STA. 4416+00  
 ALIGNMENT SHEET  
 LOC. CAMERON PARISH, LOUISIANA

VG DOC. NO. CX-588600-PPL-ALN-GIE-10000-088

YEAR: 2023    SHEET: 88 OF 90    SCALE: 1" = 200'    DWG. 1901-100-PL-DWG-7188    REV. 1

COMPANY USE

1901-100-PL-DWG-7188-1 (REV. 1) 1901-100-PL-DWG-7188-1 (REV. 1) 1901-100-PL-DWG-7188-1 (REV. 1) 1901-100-PL-DWG-7188-1 (REV. 1) 1901-100-PL-DWG-7188-1 (REV. 1)



RIGHT - OF - WAY										
SURVEY DATA	<p>4472+21.4 6.5 STRAND MARKED W/VE FENCE 4472+20.00 TO 4472+20.00 4472+20.00 TO 4472+20.00</p> <p>4477+74 TREE LINE</p> <p>4479+38 TREE LINE</p> <p>4479+49 6.5 STRAND MARKED W/VE FENCE 4479+49.00 TO 4479+49.00 4479+49.00 TO 4479+49.00</p> <p>4489+45.00 10.00 STRAND MARKED W/VE FENCE 4489+45.00 TO 4489+45.00 4489+45.00 TO 4489+45.00</p> <p>4499+49.00 10.00 STRAND MARKED W/VE FENCE 4499+49.00 TO 4499+49.00 4499+49.00 TO 4499+49.00</p>									
CLASS LOCATION	4468+00	CLASS 1	4474+85	CLASS 2	4485+47	CLASS 1	4494+77	CLASS 2	4509+75	

NOT FOR USE

**ALIGNMENT DETAIL**

- CP EXPRESS PIPELINE
- PERMANENT EASEMENT
- TEMP WORKSPACE
- ADD. TEMP WORKSPACE
- NATURAL GROUND PROFILE
- PERMANENT ACCESS ROAD
- TEMPORARY ACCESS ROAD
- SURVEY WETLANDS
- SURVEY STREAM DRAIN/WATERBODY
- W/VE WETLANDS
- PARCELS
- FACILITY SITES (CS, LAR, MAR)
- M/V SITES
- COUNTY / PARISH
- SURVEY CORRIDOR
- ROAD CENTERLINE
- RAILROAD
- FOREIGN PIPELINE
- FENCE
- STREAM RIVER
- OVERHEAD POWERLINE
- UNDERGROUND UTILITY
- TELEPHONE LINE
- SANITARY SEWER
- EDGE OF ROAD/PAVEMENT/CURB
- EDGE OF WATER
- TOE OF BANK
- TOP OF BANK
- TREE LINE
- STRUCTURE
- CONTOURS
- REXTAG FOREIGN PIPELINE
- REXTAG TRANSMISSION LINE
- ROAD-CL (TIGER DATA)

PI VALVE (M/V) [Symbol]

STATIONING I SPREAD BREAK [Symbol]

PIPELINE MILE POST [Symbol]

HDD ENTRY/EXIT [Symbol]

UTILITY POLE [Symbol]

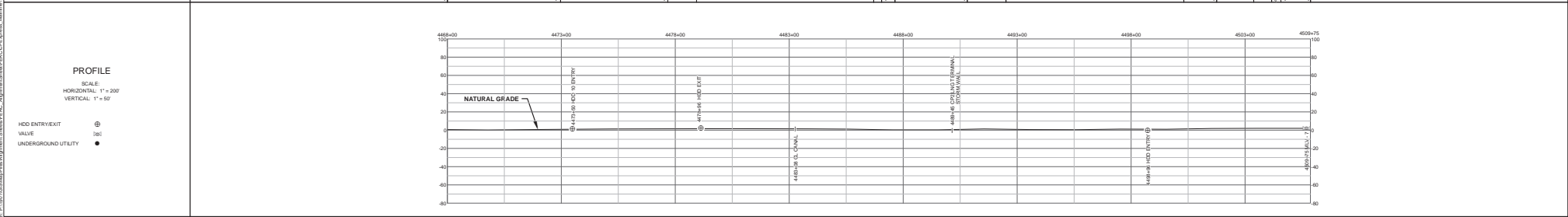
GUY ANCHOR [Symbol]

WELL [Symbol]



DEPTH OF COVER	VARIES									
REFERENCE DRAWING	HSD 10 - NIMBLEHILL STREET 1901-100-PL-DWG-7002-01-0 HDD 11 - TERMINAL 1901-100-PL-DWG-7002-01-1									

ENVIRONMENTAL SURVEY DATA	4468+00	WEB008	4473+00	WEB08C	4478+00	WEB08D	4483+00	WEB08C	4488+00	WEB08A	4493+00	WEB08B	4498+00	WEB08C	4503+00	WEB08D	4509+75
---------------------------	---------	--------	---------	--------	---------	--------	---------	--------	---------	--------	---------	--------	---------	--------	---------	--------	---------



HYDROSTATIC TEST SECTION					TEST SECTION - 3				
DWG. NO.	REFERENCE DRAWINGS	ITEM NO.	DESCRIPTION	MATERIALS	QTY	DATE	REVISIONS	ENGINEERING APPROVALS	CP EXPRESS FERC ALIGNMENT SHEET PROPOSED 48" PIPELINE STA. 4468+00 TO STA. 4509+75 ALIGNMENT SHEET LOC. CAMERON PARISH, LOUISIANA
1901-100-MP-DWG-2100	PLOT PLAN - CPX METER STATION AT CPX LNG TERMINAL					03/15/2021	A	ISSUED FOR REVIEW	
						06/29/2021	B	ISSUED FOR CLIENT REVIEW	
						10/28/2021	C	ISSUED FOR FERC FILING	
						02/28/2022	D	ISSUED FOR FERC FILING	
								DRAWN BY: GULF CHECKED BY: CR DESIGN CHECKED BY: SC PROJECT ENGINEER: JB PROJECT MANAGER: JCMR CLIENT APP: VB	

YEAR: 2022 SHEET: 90 OF 90 SCALE: 1" = 200' DWG. 1901-100-PL-DWG-7190 REV. D



RIGHT - OF - WAY	CROSSING	LAT-LA-CL-034-000-ROW	LAT-LA-CL-033-000-ROW	LAT-LA-CL-032-000-ROW	LAT-LA-CL-031-000-ROW	LAT-LA-CL-030-000-ROW
TRACT NUMBERS	ROADAGE	262421	262431	262441	262451	262461

SURVEY DATA
01+60 FENCE CORNER 17 FEE 01+60 TREE LINE 01+60 EDGE ACCESS ROAD 01+60 TREE LINE 01+60 EDGE ACCESS ROAD 01+60 TREE LINE 01+60 EDGE OF WATER 01+60 EDGE OF WATER 01+60 TOP OF BANK 01+60 TOP OF SLOPE 01+60 TREE LINE 01+60 TREE LINE

CLASS LOCATION	CLASS 1
52+00	104+00

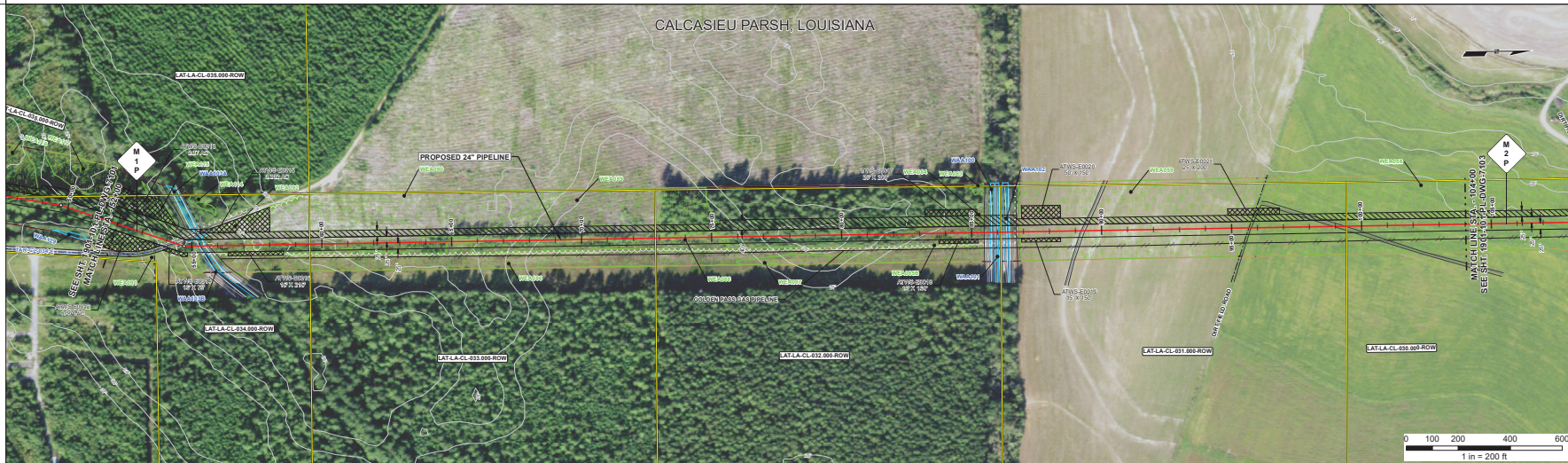
PIPE MATERIAL
<b>NOT FOR USE</b>

**ALIGNMENT DETAIL**

ENABLE LATERAL	[Symbol]
PERMANENT EASEMENT	[Symbol]
TEMP WORKSPACE	[Symbol]
ADD. TEMP WORKSPACE	[Symbol]
NATURAL GROUND PROFILE	[Symbol]
PERMANENT ACCESS ROAD	[Symbol]
TEMPORARY ACCESS ROAD	[Symbol]
SURVEY WETLANDS	[Symbol]
SURVEY STREAM DRAIN/WATERBODY	[Symbol]
WETLANDS	[Symbol]
PARCELS	[Symbol]
FACILITY SITES (CS, LAR, M&R)	[Symbol]
M&V SITES	[Symbol]
COUNTY / PARISH	[Symbol]
SURVEY CORRIDOR	[Symbol]
ROAD CENTERLINE	[Symbol]
RAILROAD	[Symbol]
FOREIGN PIPELINE	[Symbol]
FENCE	[Symbol]
STREAM RIVER	[Symbol]
OVERHEAD POWERLINE	[Symbol]
UNDERGROUND UTILITY	[Symbol]
TELEPHONE LINE	[Symbol]
SAWTOOTH SEWER	[Symbol]
EDGE OF ROAD/PAVEMENT/CURB	[Symbol]
EDGE OF WATER	[Symbol]
TOE OF BANK	[Symbol]
TOP OF BANK	[Symbol]
TREE LINE	[Symbol]
STRUCTURE	[Symbol]
CONTOURS	[Symbol]
REXTAG FOREIGN PIPELINE	[Symbol]
REXTAG TRANSMISSION LINE	[Symbol]
ROAD-CL (FISHER DATA)	[Symbol]

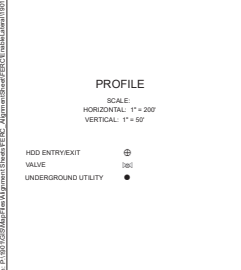
PI	●	VALVE (M&V)	(S)
STATIONING		SPREAD BREAK	(S)
PIPELINE MILE POST	+	UTILITY POLE	(S)
HDD ENTRY/EXIT	⊗	GUY ANCHOR	(S)
		WELL	(S)



DEPTH OF COVER
3

REFERENCE DRAWING
3

ENVIRONMENTAL SURVEY DATA
162602, 162603, 162604, WEA002, WEA003, WEA009, WEA008, WEA007, WEA006, WEA005, WEA004, WEA003, WEA002, WEA001, WEA000



HYDROSTATIC TEST SECTION
TEST SECTION L - 1

REFERENCE DRAWINGS		MATERIALS		REVISIONS		ENGINEERING APPROVALS	
DWG. NO.	DESCRIPTION	ITEM NO.	DESCRIPTION	DATE	DESCRIPTION	REV	DESCRIPTION
				03/15/2021	ISSUED FOR REVIEW	A	BY: GULF
				06/29/2021	ISSUED FOR CLIENT REVIEW	B	BY: CR
				10/09/2021	ISSUED FOR PERC FILING	C	BY: JB
				02/28/2022	ISSUED FOR PERC FILING	D	BY: JMR
							BY: WD

<b>CP EXPRESS</b> FERC ALIGNMENT SHEET PROPOSED 24" PIPELINE STA. 52+00 TO STA. 104+00 ALIGNMENT SHEET Loc. CALCASIEU PARISH, LOUISIANA	
YEAR: 2022    SHEET: 2 OF 7    SCALE: 1" = 200'    DWG. 1901-101-PL-DWG-7102    REV. D	

2400 1901-101-PL-DWG-7102-2.dwg, P: 1901-101-PL-DWG-7102-2.dwg, XREF: 1901-101-PL-DWG-7102-1.dwg, XREF: 1901-101-PL-DWG-7102-3.dwg, XREF: 1901-101-PL-DWG-7102-4.dwg, XREF: 1901-101-PL-DWG-7102-5.dwg, XREF: 1901-101-PL-DWG-7102-6.dwg, XREF: 1901-101-PL-DWG-7102-7.dwg, XREF: 1901-101-PL-DWG-7102-8.dwg, XREF: 1901-101-PL-DWG-7102-9.dwg, XREF: 1901-101-PL-DWG-7102-10.dwg

RIGHT - OF - WAY TRACT NUMBERS	LATA-CL-030-000-ROW		LATA-CL-029-000-ROW		LATA-CL-028-000-ROW		LATA-CL-027-000-ROW		LATA-CL-026-000-ROW			
	104+00	111+00	114+00	121+00	128+00	135+00	142+00	149+00	156+00	163+00		
SURVEY DATA	109+4 EDGE OF ROAD 109+4 EDGE OF WATER 109+4 EDGE OF BANK 109+4 EDGE OF WATER		114+5 EDGE OF WATER 114+5 EDGE OF BANK 114+5 EDGE OF WATER 114+5 EDGE OF BANK 114+5 EDGE OF WATER 114+5 EDGE OF BANK		120+0 EDGE OF WATER 120+0 EDGE OF BANK 120+0 EDGE OF WATER 120+0 EDGE OF BANK 120+0 EDGE OF WATER 120+0 EDGE OF BANK 120+0 EDGE OF WATER 120+0 EDGE OF BANK		125+0 EDGE OF WATER 125+0 EDGE OF BANK 125+0 EDGE OF WATER 125+0 EDGE OF BANK 125+0 EDGE OF WATER 125+0 EDGE OF BANK 125+0 EDGE OF WATER 125+0 EDGE OF BANK		130+0 EDGE OF WATER 130+0 EDGE OF BANK 130+0 EDGE OF WATER 130+0 EDGE OF BANK 130+0 EDGE OF WATER 130+0 EDGE OF BANK 130+0 EDGE OF WATER 130+0 EDGE OF BANK		135+0 EDGE OF WATER 135+0 EDGE OF BANK 135+0 EDGE OF WATER 135+0 EDGE OF BANK 135+0 EDGE OF WATER 135+0 EDGE OF BANK 135+0 EDGE OF WATER 135+0 EDGE OF BANK	
CLASS LOCATION	104+00 CLASS 1 164+00											
PIPE MATERIAL	NOT FOR USE											

**ALIGNMENT DETAIL**

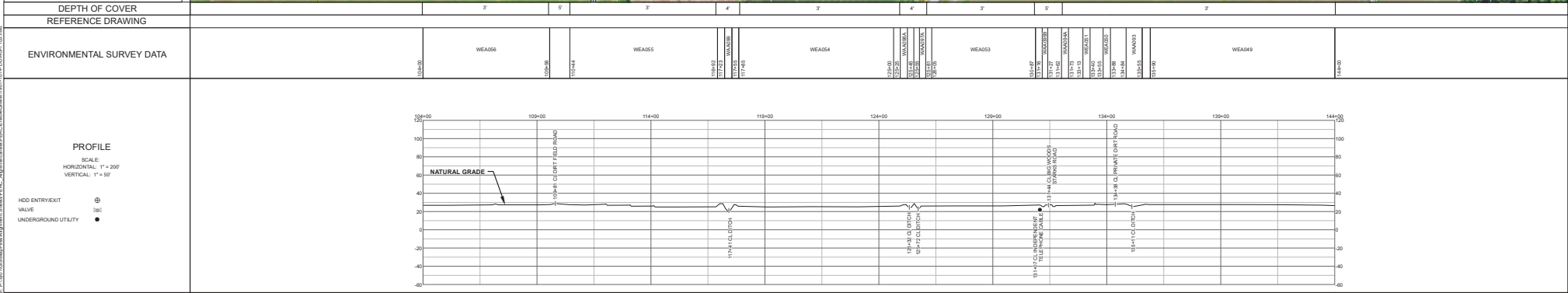
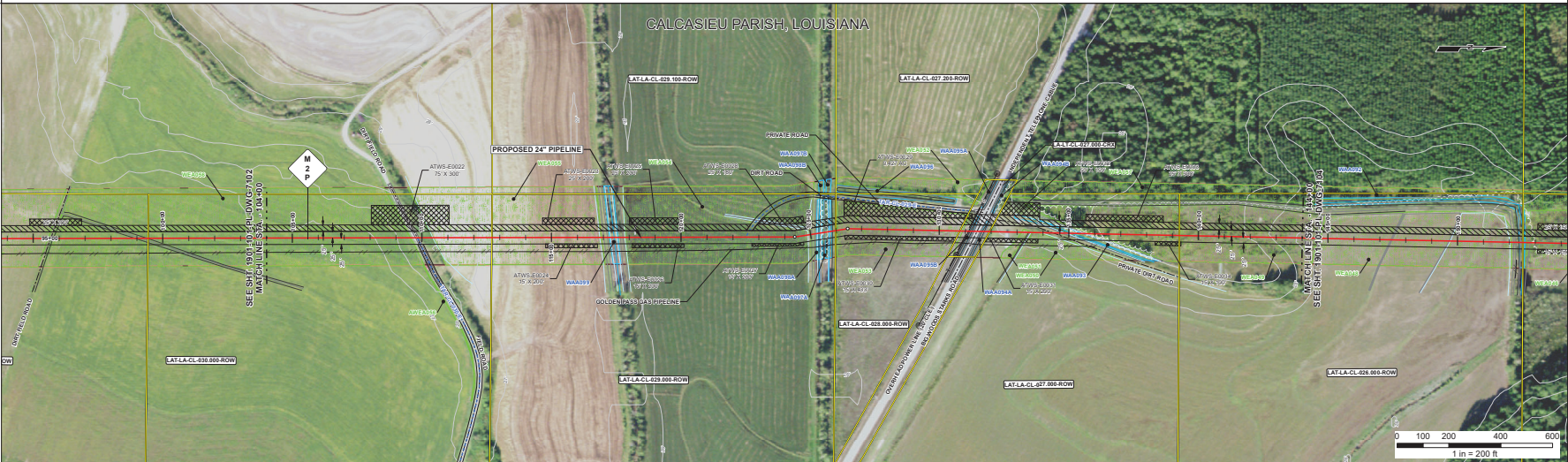
- ENABLE LATERAL
- PERMANENT EASEMENT
- TEMP WORKSPACE
- ADD. TEMP. WORKSPACE
- NATURAL GROUND PROFILE
- PERMANENT ACCESS ROAD
- TEMPORARY ACCESS ROAD
- SURVEY WETLANDS
- SURVEY STREAM DRAIN/WATERBODY
- WETLANDS
- PARCELS
- FACILITY SITES (CS, LAR, MAR)
- M/V SITES
- COUNTY / PARISH
- SURVEY CORRIDOR
- ROAD CENTERLINE
- RAILROAD
- FOREIGN PIPELINE
- FENCE
- STREAM RIVER
- OVERHEAD POWERLINE
- UNDERGROUND UTILITY
- TELEPHONE LINE
- SAFARIY BEWER
- EDGE OF ROAD/PAVEMENT/CURB
- EDGE OF WATER
- TOE OF BANK
- TOP OF BANK
- TREE LINE
- STRUCTURE
- CONTROLS
- REXTAG FOREIGN PIPELINE
- REXTAG TRANSMISSION LINE
- ROAD CL (TIGER DATA)

PI --- VALVE (M/V) [Symbol]

STATIONING | SPREAD BREAK [Symbol]

PIPELINE MILE POST [Symbol]

HDD ENTRY/EXIT [Symbol]



REFERENCE DRAWINGS		MATERIALS		REVISIONS		ENGINEERING APPROVALS	
DWG. NO.	DESCRIPTION	ITEM NO.	DESCRIPTION	DATE	DESCRIPTION	REV	DESCRIPTION
				03/15/2021	ISSUED FOR REVIEW	A	
				06/29/2021	ISSUED FOR CLIENT REVIEW	B	
				10/28/2021	ISSUED FOR PERC FILING	C	
				02/28/2022	ISSUED FOR PERC FILING	D	

CP EXPRESS	FERC ALIGNMENT SHEET	
	PROPOSED 24" PIPELINE	
	STA. 104+00 TO STA. 144+00	
ALIGNMENT SHEET		
LOC. CALCASIEU PARISH, LOUISIANA		



RIGHT - OF - WAY TRACT NUMBERS	144-00	144-01	144-02	144-03	144-04	144-05	144-06	144-07	144-08	144-09	144-10
	LAT-LA-CL-026-000-ROW										
SURVEY DATA	144-00	144-01	144-02	144-03	144-04	144-05	144-06	144-07	144-08	144-09	144-10
	SURVEY DATA										
CLASS LOCATION											
CLASS 1											
PIPE MATERIAL											
NOT FOR USE											

**ALIGNMENT DETAIL**

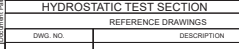
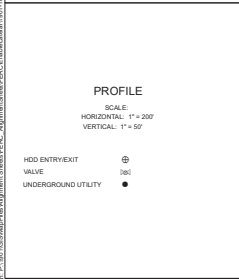
ENABLE LATERAL  
PERMANENT EASEMENT  
TEMP WORKSPACE  
ADD. TEMP WORKSPACE  
NATURAL GROUND PROFILE  
PERMANENT ACCESS ROAD  
TEMPORARY ACCESS ROAD  
SURVEY WETLANDS  
SURVEY STREAM DRAIN/WATERBODY  
WETLANDS  
PARCELS  
FACILITY SITES (CS, LAR, MAR)  
M.V. SITES  
COUNTY/PARISH  
SURVEY CORRIDOR  
ROAD CENTERLINE  
RAILROAD  
FOREIGN PIPELINE  
FENCE  
STREAM RIVER  
OVERHEAD POWERLINE  
UNDERGROUND UTILITY  
TELEPHONE LINE  
SANITARY SEWER  
EDGE OF ROAD/PAVEMENT/CURB  
EDGE OF WATER  
TOE OF BANK  
TOP OF BANK  
TREE LINE  
STRUCTURE  
CONTOURS  
REXTAG FOREIGN PIPELINE  
REXTAG TRANSMISSION LINE  
ROAD-CL (USER DATA)

PI VALVE (M.V.) [80]  
STATIONING | SPREAD BREAK [80]  
PIPELINE MILE POST [80]  
HDD ENTRYLEXIT [80]  
UTILITY POLE [80]  
GUY ANCHOR [80]  
WELL [80]



DEPTH OF COVER		2	4	6	8	10	12	14	16	18	20
----------------	--	---	---	---	---	----	----	----	----	----	----

REFERENCE DRAWING		WEA048	WEA049	WEA046	WEA047	WEA117	WEA148	WEA149	WEA06A	
-------------------	--	--------	--------	--------	--------	--------	--------	--------	--------	--



HYDROSTATIC TEST SECTION					
TEST SECTION L - 1					

REFERENCE DRAWINGS			MATERIALS			REVISIONS			ENGINEERING APPROVALS			<p>CP EXPRESS FERC ALIGNMENT SHEET PROPOSED 24" PIPELINE STA. 144+00 TO STA. 180+00 ALIGNMENT SHEET LOC. CALCASIEU PARISH, LOUISIANA</p>
DWG. NO.	DESCRIPTION	ITEM NO.	DESCRIPTION	QTY	ITEM NO.	DESCRIPTION	DATE	REV	DESCRIPTION	DATE	BY	
							03/15/2021	A	ISSUED FOR REVIEW	03/28/2022	GULF	
							06/29/2021	B	ISSUED FOR CLIENT REVIEW	03/28/2022	CR	
							10/28/2021	C	180+00 FOR FERC FILING	03/28/2022	SC	
							02/28/2022	D	ISSUED FOR FERC FILING	03/28/2022	JB	
									PROJECT ENGINEER		JOMR	
									PROJECT MANAGER		WD	
									CLIENT APP.		03/28/2022	

RIGHT-OF-WAY	CROSSING								
TRACT NUMBERS		LAT-LA-CL-004-000-ROW	LAT-LA-CL-001-000-ROW	LAT-LA-CL-003-000-ROW	LAT-LA-CL-019-000-ROW	LAT-LA-CL-018-000-ROW			
	ROADWAY								
SURVEY DATA		18+75.00 SPREAD BRANDED WIRE 18+75.00 HOED - ENTRY 18+75.00 HOD - ENTRY 18+75.00 HOD - ENTRY 18+75.00 HOD - ENTRY 18+75.00 HOD - ENTRY 18+75.00 HOD - ENTRY		18+75.00 HOD - ENTRY	20+75.00 HOD - ENTRY	21+00.00 HOD - ENTRY		23+75.00 HOD - ENTRY 23+75.00 TREE LINE 23+75.00 TREE LINE 23+75.00 HOD - ENTRY 23+75.00 HOD - ENTRY	
CLASS LOCATION		180+00			CLASS 1				232+00

NOT FOR USE

**ALIGNMENT DETAIL**

ENABLE LATERAL	[Symbol]
PERMANENT EASEMENT	[Symbol]
TEMP WORKSPACE	[Symbol]
ADD. TEMP WORKSPACE	[Symbol]
NATURAL GROUND PROFILE	[Symbol]
PERMANENT ACCESS ROAD	[Symbol]
TEMPORARY ACCESS ROAD	[Symbol]
SURVEY WETLANDS	[Symbol]
SURVEY STREAM DRAIN/WATERBODY	[Symbol]
NW WETLANDS	[Symbol]
PARCELS	[Symbol]
FACILITY SITES (CS, LAR, MAR)	[Symbol]
MV SITES	[Symbol]
COUNTY / PARISH	[Symbol]
SURVEY CORRIDOR	[Symbol]
ROAD CENTERLINE	[Symbol]
RAILROAD	[Symbol]
FOREIGN PIPELINE	[Symbol]
FENCE	[Symbol]
STREAM RIVER	[Symbol]
OVERHEAD POWERLINE	[Symbol]
UNDERGROUND UTILITY	[Symbol]
TELEPHONE LINE	[Symbol]
SAINTARY SEWER	[Symbol]
EDGE OF ROAD/PAVEMENT/CURB	[Symbol]
EDGE OF WATER	[Symbol]
TOE OF BANK	[Symbol]
TOP OF BANK	[Symbol]
TREE LINE	[Symbol]
STRUCTURE	[Symbol]
CONTROLS	[Symbol]
REXTAG FOREIGN PIPELINE	[Symbol]
REXTAG TRANSMISSION LINE	[Symbol]
ROAD-CL (TIGER DATA)	[Symbol]

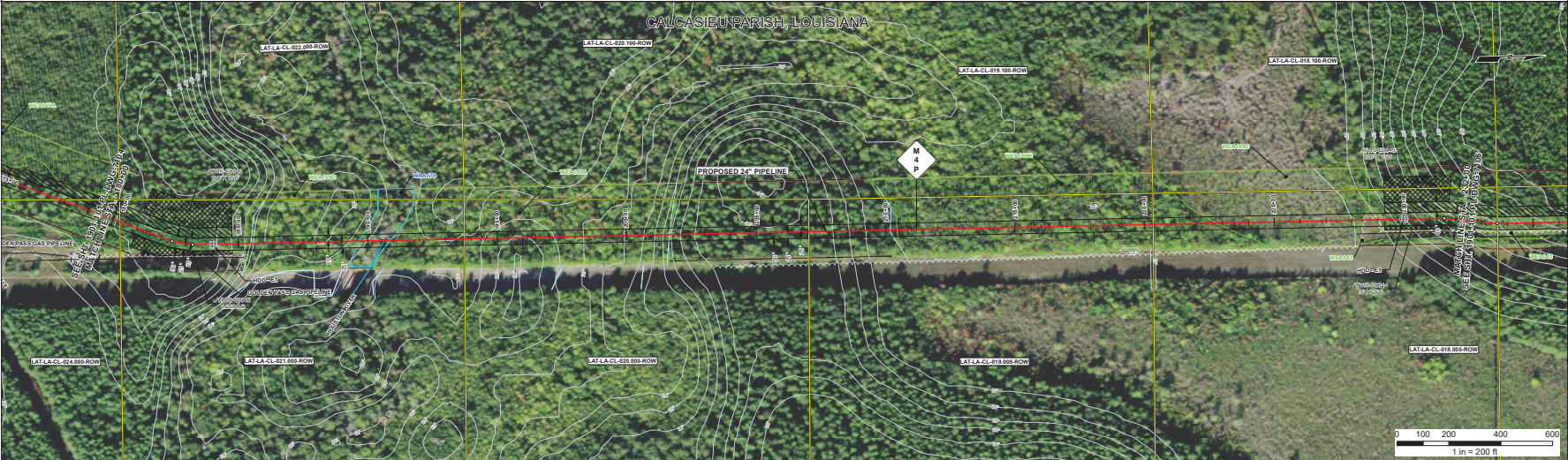
PI --- VALVE (MLV) [Symbol]

STATIONING | SPRING BREAK [Symbol]

PIPELINE MILE POST ⚗ UTILITY POLE [Symbol]

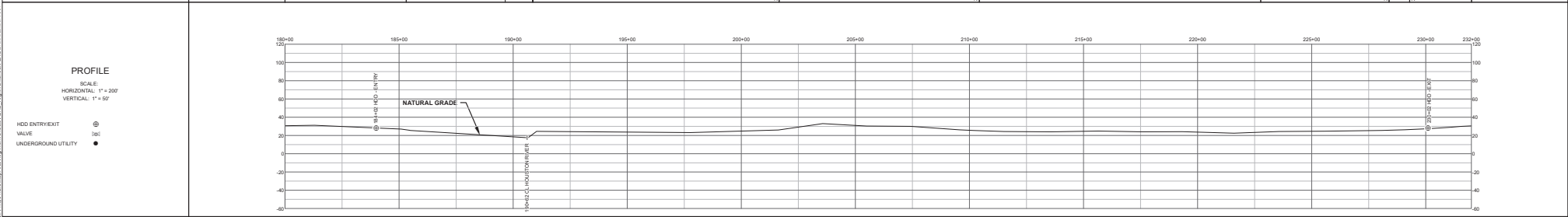
HOD ENTRY/EXIT [Symbol] [Symbol]

DATE OF AERIAL PHOTOGRAPHY: MAY 2020



DEPTH OF COVER		3'		VARIABLE				3'
REFERENCE DRAWING				HDD E1-HOUSTON RIVER - 1901-100-PL-DWG-7002-012				

ENVIRONMENTAL SURVEY DATA			WEA1980	WEA1979	WEA199A		WEA199B	WEA199C				
---------------------------	--	--	---------	---------	---------	--	---------	---------	--	--	--	--



REFERENCE DRAWINGS			MATERIALS			REVISIONS			ENGINEERING APPROVALS			<b>CP EXPRESS</b> FERC ALIGNMENT SHEET PROPOSED 24" PIPELINE STA. 180+00 TO STA. 232+00 ALIGNMENT SHEET LOC. CALCASIEU PARISH, LOUISIANA <b>CP EXPRESS</b> <b>GULF</b> Companies		
DWG. NO.	DESCRIPTION	ITEM NO.	DESCRIPTION	QTY.	ITEM NO.	DATE	DESCRIPTION	REV.	DRAWN BY:	GULF	09/02/2021			
						09/15/2021	ISSUED FOR REVIEW	A						
						09/29/2021	ISSUED FOR CLIENT REVIEW	B	DESIGN CHECKED BY:	SC	02/28/2022			
						10/08/2021	ISSUED FOR FERC FILING	C	PROJECT ENGINEER:	JB	02/28/2022			
						02/28/2022	ISSUED FOR FERC FILING	D	PROJECT MANAGER:	JCMR	02/28/2022			
									CLIENT APP:	YS	02/28/2022			
YEAR: 2022    SHEET: 5 OF 7    SCALE: 1" = 200'    DWG. 1901-101-PL-DWG-7105    REV. D														

RIGHT - OF - WAY	CROSSING											
TRACT NUMBERS	LAT-CA-CL-018-000-ROW		LAT-CA-CL-017-000-ROW		LAT-CA-CL-016-000-ROW		LAT-CA-CL-015-000-ROW		LAT-CA-CL-014-000-ROW		LAT-CA-CL-012-000-ROW	
RODAGE	232+00	233+00	234+00	235+00	236+00	237+00	238+00	239+00	240+00	241+00	242+00	243+00
SURVEY DATA	232+00 TO 233+00: 1/2" = 40' (20' x 20' GRID)		234+00 TO 235+00: 1/2" = 40' (20' x 20' GRID)		236+00 TO 237+00: 1/2" = 40' (20' x 20' GRID)		238+00 TO 239+00: 1/2" = 40' (20' x 20' GRID)		240+00 TO 241+00: 1/2" = 40' (20' x 20' GRID)		242+00 TO 243+00: 1/2" = 40' (20' x 20' GRID)	

CLASS LOCATION	CLASS 1										
PIPE MATERIAL	NOT FOR USE										

**ALIGNMENT DETAIL**

- ENABLE LATERAL
- PERMANENT EASEMENT
- TEMP WORKSPACE
- ADD. TEMP. WORKSPACE
- NATURAL GROUND PROFILE
- PERMANENT ACCESS ROAD
- TEMPORARY ACCESS ROAD
- SURVEY WETLANDS
- SURVEY STREAM DRAIN/WATERBODY
- WETLANDS
- PARCELS
- FACILITY SITES (CS, LAR, MAR)
- M.V. SITES
- COUNTY / PARISH
- SURVEY CORRIDOR
- ROAD CENTERLINE
- RAILROAD
- FOREIGN PIPELINE
- FENCE
- STREAM RIVER
- OVERHEAD POWERLINE
- UNDERGROUND UTILITY
- TELEPHONE LINE
- SEWAGE/SANITARY
- EDGE OF ROAD/PAVEMENT/CURB
- EDGE OF WATER
- TOE OF BANK
- TOP OF BANK
- TREE LINE
- STRUCTURE
- CONTOURS
- REXTAG FOREIGN PIPELINE
- REXTAG TRANSMISSION LINE
- ROAD CL (TIGER DATA)

DATE OF AERIAL PHOTOGRAPHY: MAP 2020

PI: VALVE (M.V.) [Symbol]

STATIONING: SPREAD BREAK [Symbol]

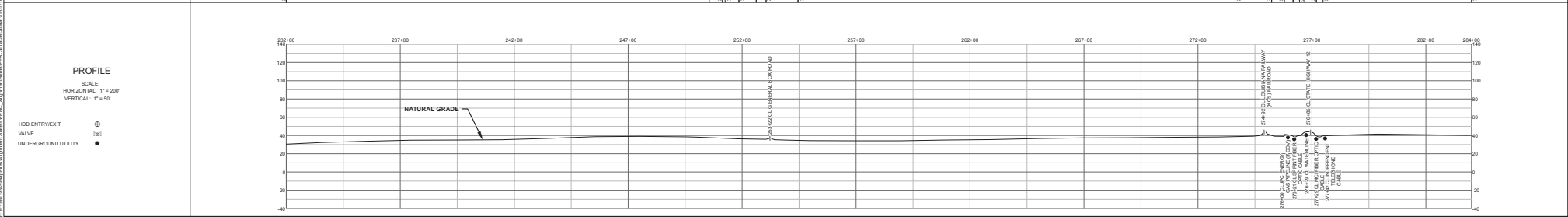
PIPELINE MILE POST: UTILITY POLE [Symbol]

HDD ENTRY/EXIT: GUY ANCHOR [Symbol], WELL [Symbol]



DEPTH OF COVER	3'										
REFERENCE DRAWING											

ENVIRONMENTAL SURVEY DATA	WEA41										
---------------------------	-------	--	--	--	--	--	--	--	--	--	--



REFERENCE DRAWINGS				MATERIALS				REVISIONS				ENGINEERING APPROVALS				<b>CP EXPRESS</b> FERC ALIGNMENT SHEET PROPOSED 24" PIPELINE STA. 232+00 TO STA. 284+00 ALIGNMENT SHEET Loc. CALCASIEU PARISH, LOUISIANA							
DWG. NO.	DESCRIPTION	ITEM NO.	DESCRIPTION	QTY	ITEM NO.	DESCRIPTION	QTY	DATE	DESCRIPTION	REV	DRAWN BY:	DATE	CHECKED BY:	DATE	DESIGN CHECKED BY:								
								03/15/2021	ISSUED FOR REVIEW	A	GULF	03/02/2021	CR	03/28/2022	SC	03/28/2022	JB	03/28/2022	JOMP	03/28/2022	VS	03/28/2022	

RIGHT - OF - WAY	CROSSING	LAT-LA-CL-010-000-ROW	LAT-LA-CL-011-000-ROW	LAT-LA-CL-008-000-ROW	LAT-LA-CL-005-000-ROW	LAT-LA-CL-002-000-ROW
TRACT NUMBERS		284+00	284+00	287+00	300+00	316+00
ROADAGE		1:4	1:4	1:4	1:4	1:4

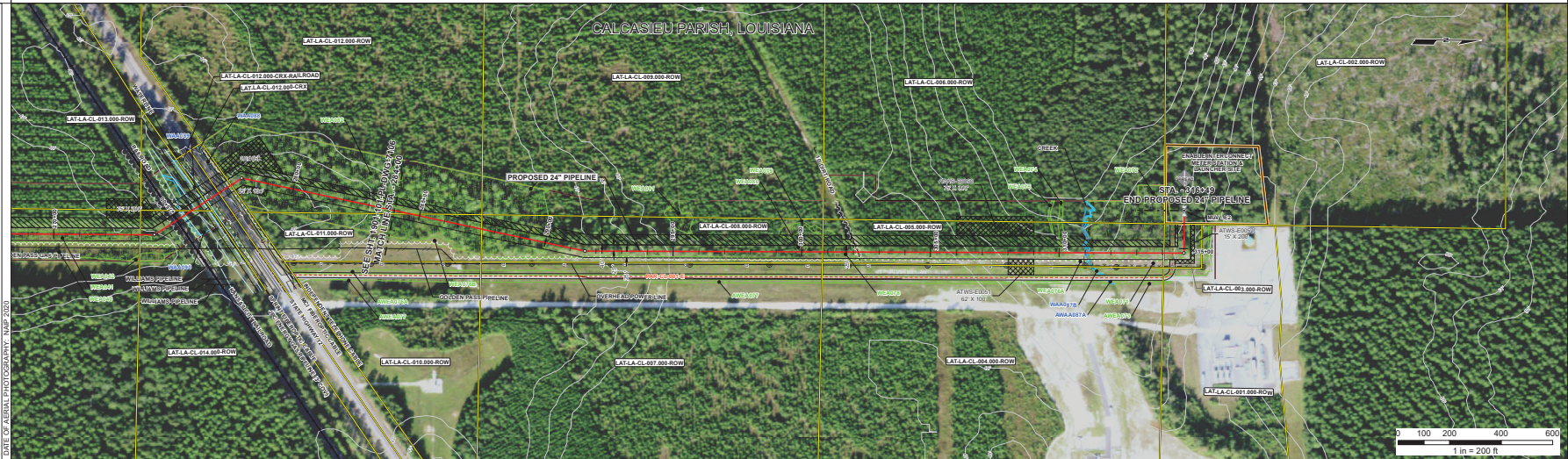
SURVEY DATA		284+00	284+00	287+00	300+00	316+00
CLASS LOCATION		284+00	284+00	287+00	300+00	316+00
PIPE MATERIAL		284+00	284+00	287+00	300+00	316+00

NOT FOR USE

**ALIGNMENT DETAIL**

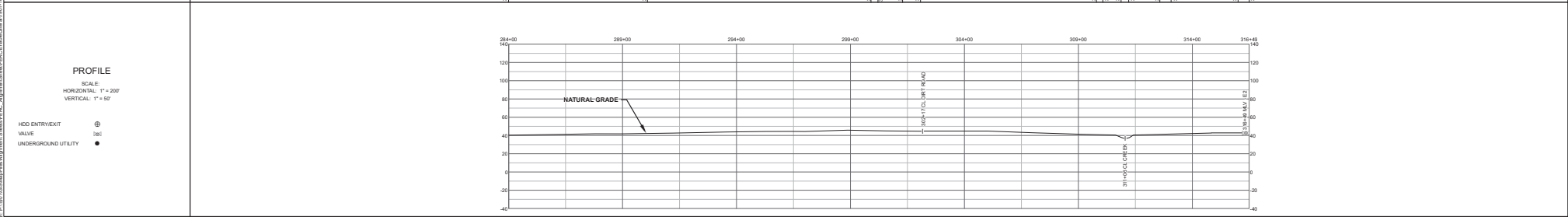
- ENABLE LATERAL
- PERMANENT EASEMENT
- TEMP WORKSPACE
- ADD. TEMP WORKSPACE
- NATURAL GROUND PROFILE
- PERMANENT ACCESS ROAD
- TEMPORARY ACCESS ROAD
- SURVEY WETLANDS
- SURVEY STREAM DRAIN/WATERBODY
- WETLANDS
- PARCELS
- FACILITY SITES (CS, LAR, MAR)
- MV/SITES
- COUNTY / PARISH
- SURVEY CORRIDOR
- ROAD CENTERLINE
- RAILROAD
- FOREIGN PIPELINE
- FENCE
- STREAM RIVER
- OVERHEAD POWERLINE
- UNDERGROUND UTILITY
- TELEPHONE LINE
- SAWDRY BEWER
- EDGE OF ROAD/PAVEMENT/CURB
- EDGE OF WATER
- TOE OF BANK
- TOP OF BANK
- TREE LINE
- STRUCTURE
- CONTOURS
- REXTAG FOREIGN PIPELINE
- REXTAG TRANSMISSION LINE
- ROAD-CL (FGEN DATA)

PI: VALVE (MV) [M], SPREAD BREAK [S], UTILITY POLE [U], PIPELINE MILE POST [P], GUY ANCHOR [A], HDD ENTRY/EXIT [E], WELL [W]



DEPTH OF COVER		284+00	287+00	300+00	316+00
----------------	--	--------	--------	--------	--------

REFERENCE DRAWING		WEA072	WEA072	WEA072	WEA072
-------------------	--	--------	--------	--------	--------



REFERENCE DRAWINGS		MATERIALS		REVISIONS		ENGINEERING APPROVALS	
DWG. NO.	DESCRIPTION	ITEM NO.	DESCRIPTION	DATE	DESCRIPTION	REV	DESCRIPTION
1901-100-AP-DWG-2400	PILOT PLAN, ENDSIDE INTERCONNECT METER STATION AND LAUNCHER SITE			03/15/2021	ISSUED FOR REVIEW	A	
				06/29/2021	ISSUED FOR CLIENT REVIEW	B	
				10/28/2021	ISSUED FOR PERC FILING	C	
				02/28/2022	ISSUED FOR PERC FILING	D	

**CP EXPRESS**  
**FERC ALIGNMENT SHEET**  
**PROPOSED 24" PIPELINE**  
**STA. 284+00 TO STA. 316+49**  
**ALIGNMENT SHEET**  
**LOC. CALCASIEU PARISH, LOUISIANA**

**CP EXPRESS**  
**GULF Companies**

YEAR: 2022 SHEET: 7 of 7 SCALE: 1" = 200' DWG. 1901-101-PL-DWG-7107 REV. D