

NATURAL RESOURCES AT SITE 300



ALAMEDA WHIPSNAKE



GREAT HORNED OWL



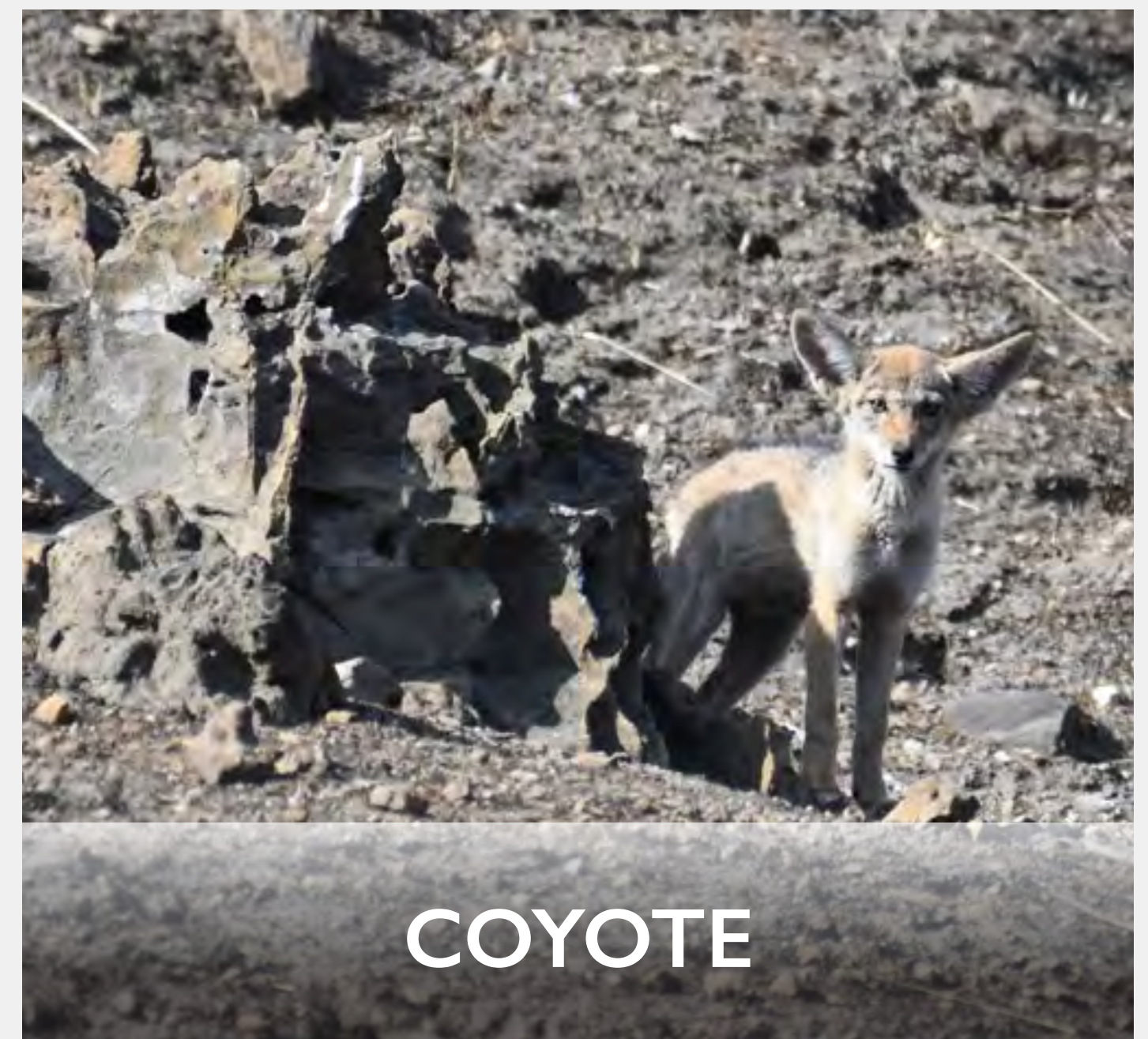
CALIFORNIA RED-LEGGED
FROG



HUMMINGBIRD



LARGE-FLOWERED
FIDDLENECK



COYOTE



FOOTHILL YELLOW-
LEGGED FROG

Site 300 has unique environmental qualities and is home to a large plant and wildlife population, including rare and endangered plants and animals. Access to these populations is controlled, and site operations have successfully co-existed with them for many years.

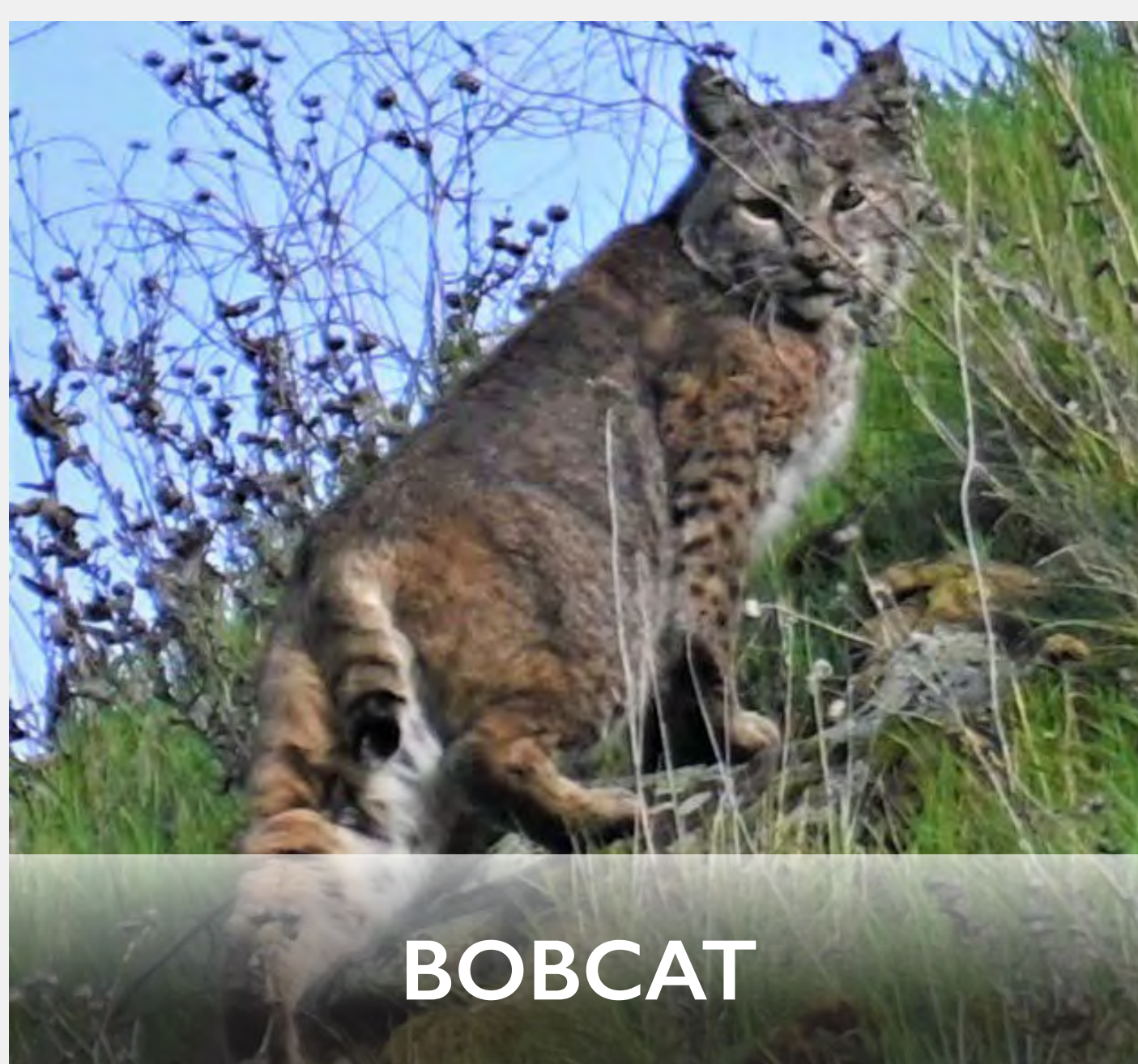
Within Site 300 is a Large-Flowered Fiddleneck (*Amsinckia grandiflora*) Federal Preserve.



HORNED LIZARD



ROUGH-LEGGED HAWK



BOBCAT



BURROWING OWL