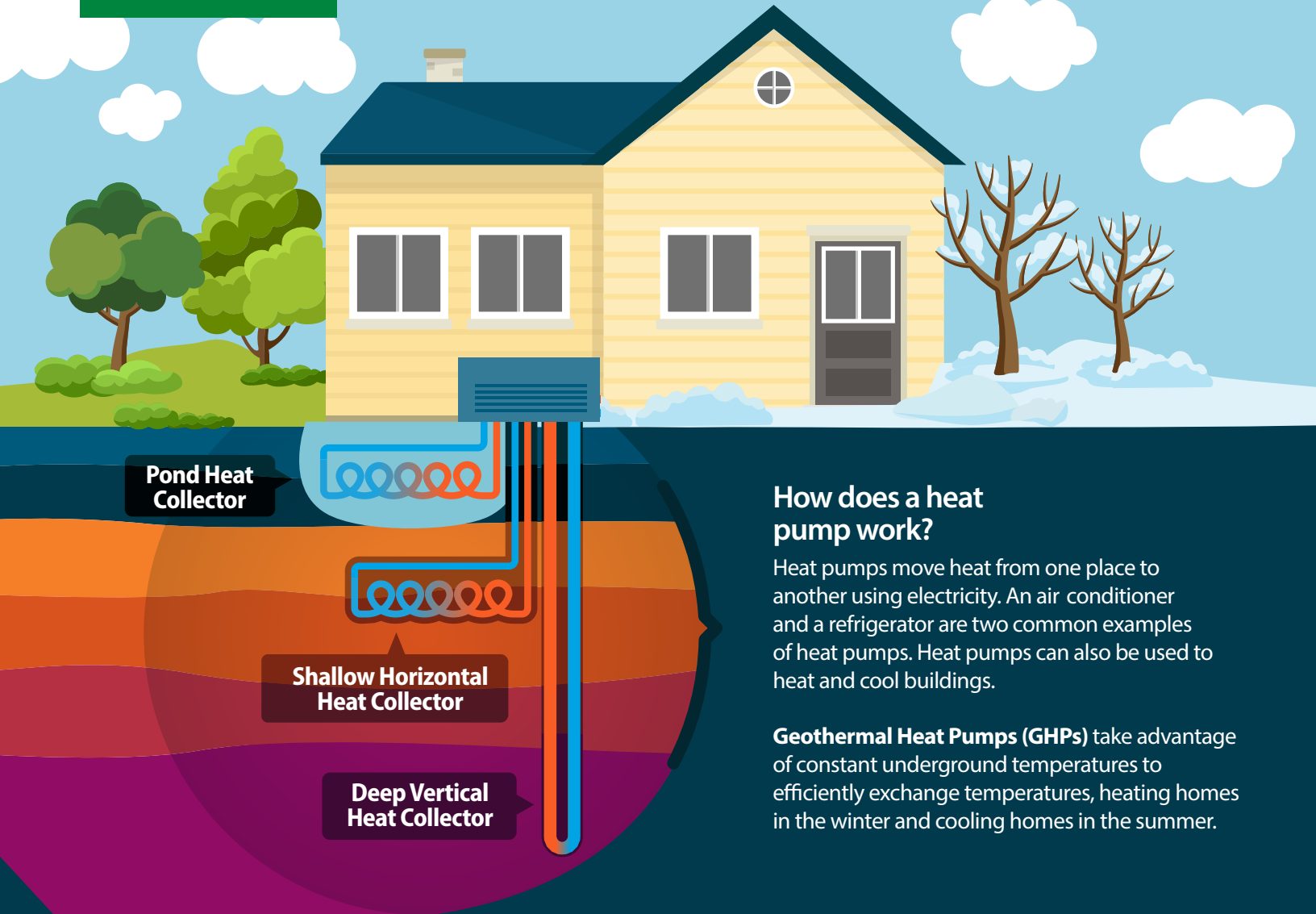


What are Geothermal Heat Pumps?



How does a heat pump work?

Heat pumps move heat from one place to another using electricity. An air conditioner and a refrigerator are two common examples of heat pumps. Heat pumps can also be used to heat and cool buildings.

Geothermal Heat Pumps (GHPs) take advantage of constant underground temperatures to efficiently exchange temperatures, heating homes in the winter and cooling homes in the summer.

Check out why **GHPs might be a perfect solution** for your heating and cooling needs and consult a designer today!

- ✓ Utilizes the renewable geothermal energy right under your feet
- ✓ Long lifespan
- ✓ Suitable for all areas of the United States
- ✓ Extreme low use of electricity, even at maximum power use
- ✓ Seasonal energy storage
- ✓ No outside noise
- ✓ More efficient than conventional heating systems