

Appendix B Precipitation and Seeps in Vicinity of WS-09A

Appendix B Precipitation and Seeps in Vicinity of WS-09A

Table B-1 Summary of Annual Rainfall Measured at the Santa Susana Field Laboratory, 1960-2010

Figure B-1 Annual Precipitation at the SSFL, 1960 through 2010

Attachment B-1 Status Report May thru June 2010, Springs in Vicinity of WS-9A Santa Susana Field Laboratory, Ventura County, CA

Attachment B-2 Status Report July thru September 2010, Springs in Vicinity of WS-9A Santa Susana Field Laboratory, Ventura County, CA

Attachment B-3 Status Report October thru December 2010, Springs in Vicinity of WS-9A Santa Susana Field Laboratory, Ventura County, CA

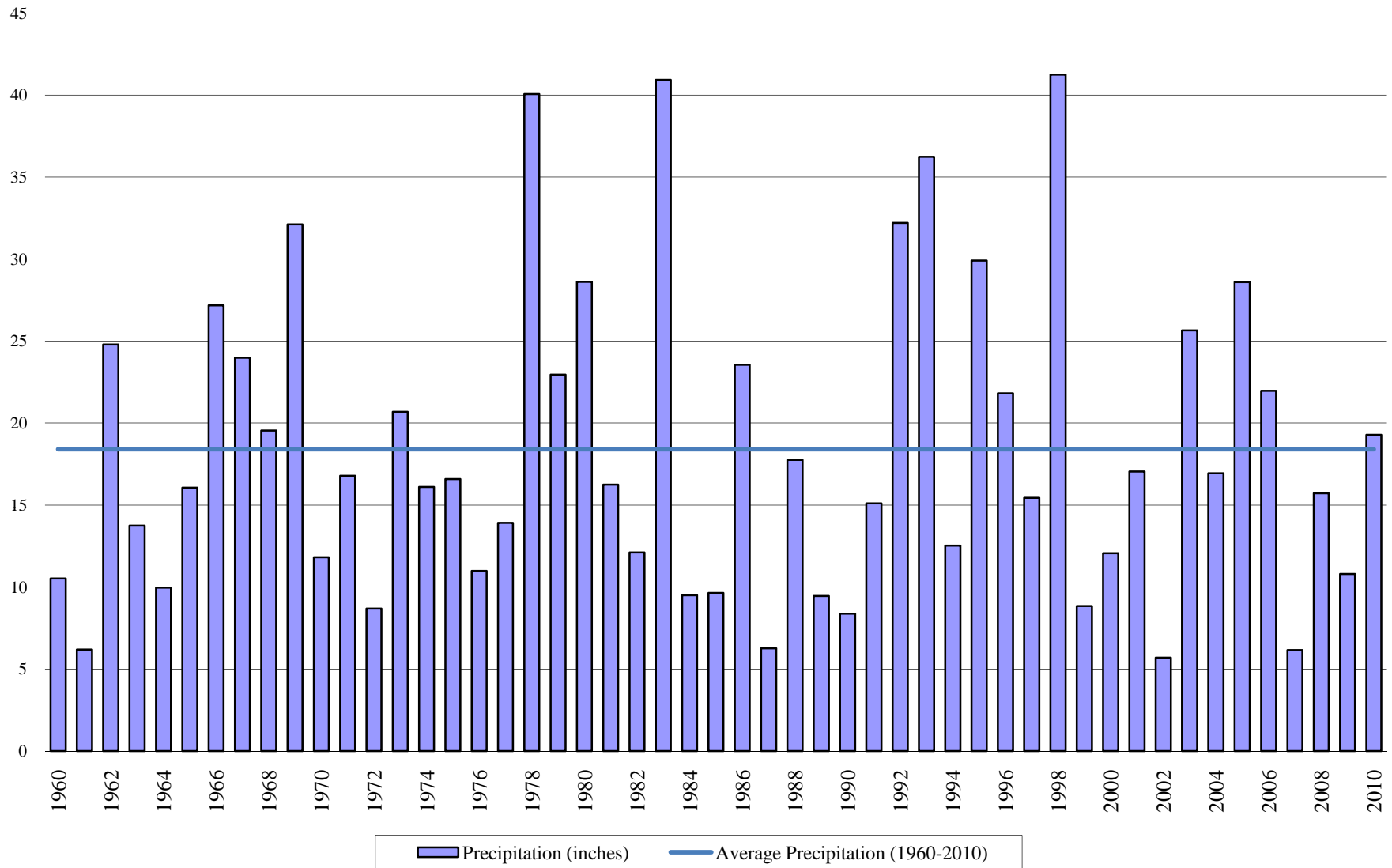
TABLE B-1
SUMMARY OF ANNUAL RAINFALL
MEASURED AT THE SANTA SUSANA FIELD LABORATORY, 1960-2010
BOEING SANTA SUSANA FIELD LABORATORY
VENTURA COUNTY, CALIFORNIA

Water Year Ending in	Precipitation (inches)	Water Year Ending in	Precipitation (inches)
1960	10.52	1986	23.55
1961	6.18	1987	6.27
1962	24.79	1988	17.75
1963	13.74	1989	9.46
1964	9.96	1990	8.38
1965	16.06	1991	15.10
1966	27.18	1992	32.21
1967	23.99	1993	36.23
1968	19.54	1994	12.52
1969	32.11	1995	29.91
1970	11.81	1996	21.81
1971	16.79	1997	15.44
1972	8.68	1998	41.24
1973	20.69	1999	8.84
1974	16.11	2000	12.07
1975	16.58	2001	17.05
1976	10.99	2002	5.70
1977	13.91	2003	25.65
1978	40.06	2004	16.93
1979	22.96	2005	28.60
1980	28.61	2006	21.97
1981	16.25	2007	6.15
1982	12.11	2008	15.72
1983	40.93	2009	10.80
1984	9.50	2010	19.28
1985	9.64		
Average Annual Precipitation (1960-2010) = 18.40 Inches			

NOTE

Precipitation reported annually for the period of October of the prior year through September of the calendar year indicated.

Figure B-1
Annual Precipitation at the SSFL, 1960 through 2010





HARGIS + ASSOCIATES, INC.
HYDROGEOLOGY • ENGINEERING

La Jolla Gateway
9171 Towne Centre Drive, Suite 375
San Diego, CA 92122
Phone: 858.455.6500
Fax: 858.455.6533

July 21, 2010

VIA FEDERAL EXPRESS STANDARD

Ms. Deborah Taege
THE BOEING COMPANY
Santa Susana Field Laboratory
5800 Woolsey Canyon Road
Canoga Park, CA 91304

Re: Status Report May thru June 2010 –
Springs in Vicinity of WS-9A Santa Susana Field Laboratory, Ventura County, California

Dear Ms. Taege,

This letter reports the status of Boeing's recent activity at the subject springs through June 30, 2010. Additional details have been discussed in prior reports.

Boeing continued weekly inspections of the springs through June 30th. There were no rain events in May or June and pumping from the springs was initiated on May 5th. From the period of May 5th thru June 30th a total of 2,000 gallons was pumped from FDP-890, 4,300 gallons from FDP-881, and 9,660 gallons from FDP-882.

In order to mitigate groundwater flow emergence at the springs, Boeing continued to extract groundwater from WS-9A. For most of the current period, the water level was maintained at approximately 25 to 26 feet below top of well casing. More than 413,000 gallons of water were extracted from WS-9A during the period and more than 913,000 gallons have been extracted since October 26, 2009. The extracted groundwater was treated at the GET system and disposed offsite.

Sincerely,

HARGIS + ASSOCIATES, INC.

Christopher Liles, P.E.
Senior Engineer

CML/gll

1050 ltr taege01.gll



Other Offices:
Mesa, AZ
Tucson, AZ



HARGIS + ASSOCIATES, INC.
HYDROGEOLOGY • ENGINEERING

La Jolla Gateway
9171 Towne Centre Drive, Suite 375
San Diego, CA 92122
Phone: 858.455.6500
Fax: 858.455.6533

October 29, 2010

VIA FEDERAL EXPRESS STANDARD

Ms. Deborah Taege
THE BOEING COMPANY
Santa Susana Field Laboratory
5800 Woolsey Canyon Road
Canoga Park, CA 91304

Re: Status Report July thru September 2010,
Springs in Vicinity of WS-9A, Santa Susana Field Laboratory, Ventura County, California

Dear Ms. Taege,

This letter reports the status of Boeing's recent activity at the subject springs through September 30, 2010. Additional details have been discussed in prior reports.

Boeing continued weekly inspections of the springs through September 30th. There were no rain events in July, August, or September. From the period of July 1st thru September 30th, a total of 291 gallons was pumped from FDP-882; both FDP 881 and FDP 890 had already dried up prior to this reporting period.

In order to mitigate groundwater flow emergence at the spring(s), Boeing continued to extract groundwater from WS-9A through August 23, 2010 at which point the extraction system was shut down. For the current period, the water level was maintained at approximately 25 to 26 feet below top of well casing. More than 419,000 gallons of water were extracted from WS-9A during the period and more than 1,220,000 gallons have been extracted since October 26, 2009. The extracted groundwater was treated at the GET system and disposed offsite.

Sincerely,

HARGIS + ASSOCIATES, INC.

Christopher Liles, P.E.
Senior Engineer

CML/gll



HARGIS + ASSOCIATES, INC.
HYDROGEOLOGY • ENGINEERING

La Jolla Gateway
9171 Towne Centre Drive, Suite 375
San Diego, CA 92122
Phone: 858.455.6500
Fax: 858.455.6533

January 17, 2011

ELECTRONIC MAIL

Ms. Deborah Taege
THE BOEING COMPANY
Santa Susana Field Laboratory
5800 Woolsey Canyon Road
Canoga Park, CA 91304

Re: Status Report October through December 2010 –
Springs in Vicinity of WS-9A, Santa Susana Field Laboratory, Ventura County, California

Dear Ms. Taege,

This letter reports the status of Boeing's recent activity at the subject springs from October 1 through December 31, 2010. Additional details have been discussed in prior reports.

Boeing continued weekly inspections of the springs from October 1 through December 31. During this period, a total of 845 gallons was pumped from FDP-881 and a total of 745 gallons was pumped from FDP-882. No water was pumped from FDP-890 during this reporting period.

In an effort to minimize flow from the springs Boeing extracted groundwater throughout the reporting period. A total of 94,856 gallons of water was extracted from WS-9A during the period, with more than 1,293,624 gallons having been extracted since October 26, 2009. The extracted groundwater was treated at the GET system and disposed offsite.

Sincerely,

HARGIS + ASSOCIATES, INC.

Christopher Liles, P.E.
Senior Engineer

CML/gll

1050 ltr taege01.gll

Other Offices:
Mesa, AZ
Tucson, AZ