



U.S. DEPARTMENT OF  
**ENERGY**



*Hanford Tanks circa 1944 Under Construction*

*A Basic Overview of the*

# **Former Worker Medical Screening Program (FWP)**

**Outreach & Awareness Series**



*Department of Energy, Savannah River Site - R Reactor Disassembly Basin Grouting*

*Office of Environment, Health, Safety and Security (EHSS)*

*U.S. Department of Energy*

*A Basic Overview of the*  
**Former Worker Medical  
Screening Program (FWP)**

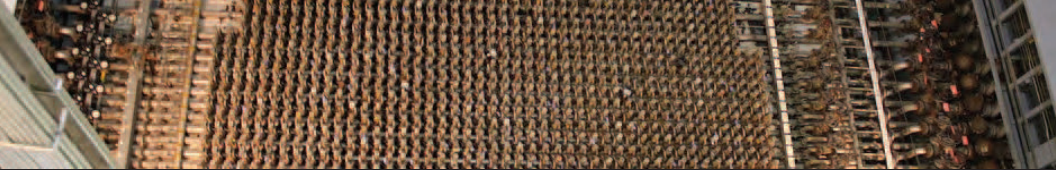
## **OVERVIEW**

This pamphlet has been developed by the Office of Environment, Health, Safety and Security (EHSS) as part of its outreach and awareness campaign to advance the Department of Energy (DOE) mission. Specifically, it provides important information to inform former and current DOE Federal, contractor, and subcontractor employees about potentially lifesaving benefits and services offered under the DOE Former Worker Medical Screening Program (FWP).

FWP was established following the issuance of the National Defense Authorization Act for Fiscal Year 1993 (PL 102-484), which called for DOE to assist workers with determining whether they had health issues related to their work at a DOE facility. FWP offers free medical screening to workers for potential adverse health effects related to occupational exposures, such as beryllium, asbestos, silica, welding fumes, lead, cadmium, chromium, and solvents. The medical screening exams are administered by third party providers through cooperative agreements with DOE. This is to ensure objective evaluation of workers' health in relation to their prior workplace exposures by independent physicians with expertise in occupational medicine.

A critical goal of FWP is to reach out to as many of the estimated 600,000 former employees who have worked in the DOE complex, or for its predecessor Agencies, during the past 60-plus years. One strategy that DOE relies on to accomplish this goal is by making the screening examinations conveniently available to workers regardless of where they currently reside.

EHSS manages and administers the FWP, as well as DOE's support to the Energy Employees Occupational Illness Compensation Program Act, which is administered by the Department of Labor. These are two of the most important programs within EHSS and have the unwavering commitment and support of DOE's senior leadership. The Department views these programs as a moral commitment to repay the huge debt that the country owes the former and current workers for their efforts to strengthen the national defense, advance basic science and technology, and promote the energy security of the United States.



## Table of Contents

What is the Former Worker Medical Screening Program?.....	1
How does DOE Implement the Former Worker Medical Screening Program?.....	1
Who is Eligible to Participate in the Former Worker Medical Screening Program?.....	3
What are the Benefits of Participation in the Former Worker Medical Screening Program?.....	4
What Type of Medical Screening is Offered by the Former Worker Medical Screening Program?.....	6
What Type of Medical Screening is Performed to Detect Beryllium Sensitization?.....	7
Where Can I Receive Medical Screening?.....	7
Table 1: Listing of Available Medical Screening Providers .....	8
How is My Privacy Protected? .....	15
Where Can I Receive Additional Information and Assistance? .....	16
Table 2: Available Web Resources and Information.....	16

## **What is the Former Worker Medical Screening Program?**

---

The Former Worker Medical Screening Program (FWP) is a congressionally mandated activity that was established to check for potential adverse health effects related to occupational exposures such as beryllium, asbestos, silica, welding fumes, lead, cadmium, chromium, and solvents.

FWP was established following the issuance of the National Defense Authorization Act for Fiscal Year 1993 (PL 102-484), which called for the Department of Energy (DOE) to assist workers with determining whether they had health issues related to their prior work with DOE.

Medical screening efforts were initiated in 1996. Medical screening is a strategy used to identify diseases or conditions in a select population at an early stage, often before signs and symptoms develop, and to refer individuals with suspicious findings to their personal physician or a specialist for diagnosis and treatment.

The components of the screening examination are based on an individual's work and exposure history. The screening exam may include a physical exam, chest x-ray, breathing test, hearing exam, basic blood work, and urinalysis, as well as specialized blood, urine tests and low-dose CT scan for certain at-risk individuals.

## **How does DOE Implement the Former Worker Medical Screening Program?**

---

The FWP program is managed and coordinated by the Office of Environment, Health, Safety and Security (EHSS) within DOE. The medical screening exams are offered by third-party providers from universities, labor unions, and commercial organizations with expertise in administration of medical screening programs.

Screening locations have been established throughout the country to make it convenient for the workers to obtain services close to their residence. This arrangement makes certain that workers receive an independent evaluation of their health in relation to their prior workplace exposures by qualified physicians with expertise in occupational medicine.

The unique characteristics of the FWP include the sheer size of the program infrastructure, vast nationwide geographic coverage of the program, the large number of potential program participants requiring medical screening, and the program's diverse stakeholders. These challenging factors necessitate DOE instituting robust program management, stringent quality assurance, and proactive performance monitoring of program implementation.



## How does DOE Implement the Former Worker Medical Screening Program? *(Continued)*

---

To provide effective implementation of FWP, EHSS performs several key functions, including:

- Establishing program-wide policies and procedures, including provisions to ensure confidentiality and privacy of program participants;
- Developing program implementation guides, including medical protocols and reporting of results, to ensure consistency on the level, quality, and delivery of services provided;
- Providing program management, fiscal oversight, and performance monitoring of six separate projects held by consortia of universities, unions, and commercial organizations with expertise in administration of medical programs;
- Securing and establishing the necessary infrastructure to meet the medical screening needs and demands of the program participants in a timely fashion;
- Interfacing and coordinating with a broad spectrum of stakeholders, including worker representatives, labor unions, worker advocates, DOE Institutional Review Boards (IRB), DOE Program Offices, local and State entities and elected officials, and congressional representatives;
- Facilitating communication within and outside of the program to share lessons learned and program-related developments. A key outcome of this process is improved workplace hazard control practices to prevent or reduce negative health effects for current and future workers;
- Proactively reaching out to DOE Program Offices to identify former workers and ensure current workers are provided FWP program information as they retire/terminate from the site; and
- Complementing the Department of Labor's (DOL) Energy Employees Occupational Illness Compensation Program (EEOICPA) as the FWP offers former DOE workers medical evaluations that are conducted by expert occupational medicine physicians, providing both the workers and the DOL claims examiners with objective information for decision-making about the appropriateness of compensation.

## Who is Eligible to Participate in the Former Worker Medical Screening Program?

Any former DOE Federal, contractor, and subcontractor worker who has worked with hazardous substances is encouraged to enroll. Examples of hazardous substances include:

- Asbestos;
- Beryllium;
- Radioactive substances; and
- Metal welding fumes.

There are approximately 600,000 former workers believed to have worked within the DOE complex, or for its predecessor Agencies, during the past 60-plus years, who are eligible to participate in the program.



Department of Energy, Hanford Site

## What are the Benefits of Participation in the Former Worker Medical Screening Program?

---

FWP offers former DOE workers with the opportunity to obtain an independent, objective assessment of their health in relation to their prior workplace exposures by a physician with expertise in occupational medicine. The exam is free and affords workers the opportunity to be screened for work-related diseases, which if caught early, may be treated.

The screening exam is comprehensive and uniquely designed to provide workers with an evaluation of their health related to potential occupational exposures, as well as a general assessment of their overall health. Workers who participate in the medical screening program are eligible for a rescreening exam 3 years after their initial examination. Participants will be notified by their screening program when they are eligible for a rescreen examination.

The exams are delivered by a nationwide network of medical clinics; therefore, workers can be served in close proximity to where they live. The components of the screening examination may include a physical exam, chest x-ray, breathing test, hearing test, basic blood work, and urinalysis, as well as specialized blood and urine tests and low-dose CT scan depending on the individual's work and exposure history. This screening is designed to test for a number of conditions, such as:

- Chronic respiratory diseases;
- Hearing loss;
- Liver and kidney problems; and
- Some forms of cancer.

Exam results, including any incidental findings discovered during the screening exam, that pose a potential concern are reported to the participant through a results letter. The results letter also includes recommendations for further evaluation and follow up. Participants may also request a copy of their results be sent to their personal physician. Most participants of the FWP have been reassured that they do not have significant or life-threatening health conditions due to occupational exposures. However, participants with findings that are consistent with a potential occupationally related disease are referred to the DOL for possible compensation under the EEOICPA. EEOICPA provides compensation to former workers for illnesses that may be related to their employment at a DOE facility.

DOL's Resource Centers are available around the United States to assist workers with applying for claims under EEOICPA. The Resource Centers help employees and their families file for benefits under EEOICPA. To view a map of the locations and the regions they service, please visit:

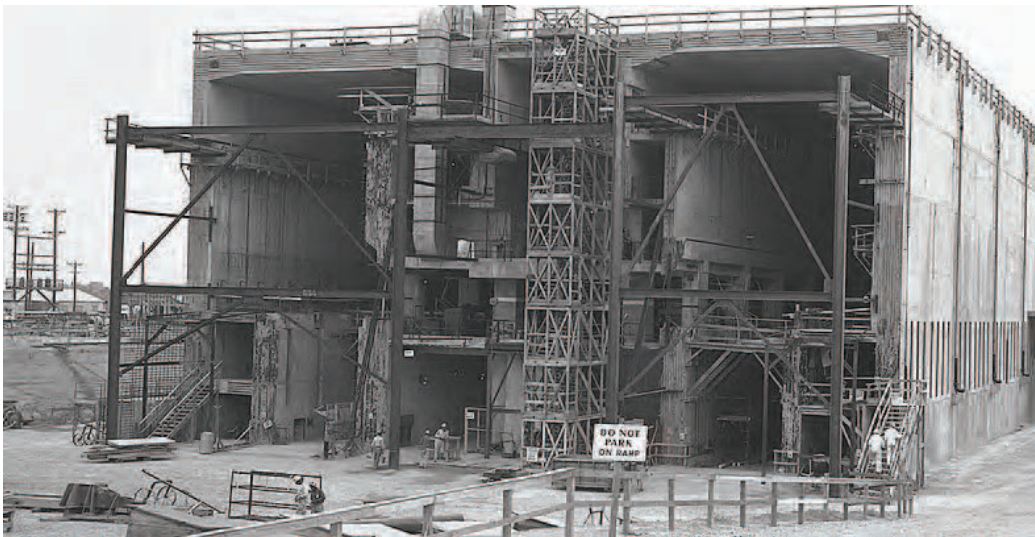
<https://www.dol.gov/agencies/owcp/energy/regs/compliance/ResourceMeetings/ResourceCenters>

## What are the Benefits of Participation in the Former Worker Medical Screening Program? (Continued)

If you receive a medical screening exam through FWP and a potentially work-related condition is identified, or if you currently believe you have an occupational illness caused by your work at a DOE facility, please contact DOL or one of its Resource Centers.

You may contact the Resource Center near you through one of the toll-free numbers:

Location	Phone Number
Livermore, California	(866) 606-6302
Westminster, Colorado	(866) 540-4977
Idaho Falls, Idaho	(800) 861-8608
Paducah, Kentucky	(866) 534-0599
Las Vegas, Nevada	(866) 697-0841
Espanola, New Mexico	(866) 272-3622
Amherst, New York	(800) 941-3943
Portsmouth, Ohio	(866) 363-6993
North Augusta, South Carolina	(866) 666-4606
Oak Ridge, Tennessee	(866) 481-0411
Richland, Washington	(888) 654-0014



Department of Energy, Savannah River Site - H Canyon circa 1950s Under Construction

## What Type of Medical Screening is Offered by the Former Worker Medical Screening Program?

---

The FWP uses a customized medical screening protocol that was developed by a team of independent physicians specializing in occupational medicine. The components of the protocol include tests targeted to screen for selected adverse health effects specific to the exposures encountered by workers at DOE facilities.

The medical screening protocol provides a list of the hazards, the organs targeted by the hazard, potential health outcomes, screening tests, and tests offered during rescreen exams within the FWP.



*Department of Energy, Savannah River Site - Mixed Oxide Fuel Fabrication Facility Under Construction*



## What type of Medical Screening is Performed to Detect Beryllium Sensitization?

---

A Beryllium Lymphocyte Proliferation Test (BeLPT) is offered to participants who were exposed to beryllium during their work for DOE. BeLPT is a blood test used to detect how an individual's lymphocytes (disease-fighting white blood cells) react to beryllium. If these lymphocytes react to the beryllium in a specific way, the test is considered "abnormal." If they do not react to beryllium, the test is "normal." Experts believe that BeLPT shows "abnormal" results in individuals who have become "sensitized" or "allergic" to beryllium.

At present, it is unclear what this sensitization means. Studies have shown it to be an early sign of chronic beryllium disease (CBD) in some individuals. In others, sensitization might simply mean that the person was exposed to beryllium and that his or her body has reacted. It might also mean that an individual is more likely than others to develop CBD. Employees are being offered BeLPT because doctors believe it is useful in detecting cases of CBD early or cases that might otherwise be missed or diagnosed as another type of lung problem.

At the same time that a blood sample is taken for BeLPT, additional tests may be offered including:

- Chest x-rays;
- Breathing tests called pulmonary function studies; and
- Physical examination.

If you have an abnormal BeLPT, FWP will refer you to DOL for more information on filing a claim under EEOICPA. We encourage you to work with your personal physician to determine follow-up testing to check for CBD.

## Where can I Receive Medical Screening?

---

The medical screening is provided by a vast network of resources throughout the country, including major U.S. universities and medical schools, national health care delivery systems, major labor unions, and local health care facilities.

Screening clinics are located in the vicinity of most major DOE sites. In addition, DOE offers access to a large nationwide system of health clinics that are centrally coordinated to serve former workers who no longer live in close proximity to their former site.

Table 1 provides a listing of available resources that can be contacted by former workers to receive medical screening.

**Table 1: Listing of Available Medical Screening Providers**

State	DOE Site <sup>1</sup>	Worker Population/Medical Screening Program Provider	Local Office Location and Phone
Alaska	Amchitka Island	All workers, primarily construction  CPWR – The Center for Construction Research & Training (CPWR) [The Building Trades National Medical Screening Program] (BTMed)]	Phone: 1(800) 866-9663
California	Area IV of the Santa Susana Field Laboratory	Production workers	Phone: 1(866) 812-6703
		Oak Ridge Associated Universities (ORAU)/National Supplemental Screening	
	Canoga Avenue Facility	Construction/subcontractor workers	Phone: 1(800) 866-9663
		CPWR/BTMed	
	DeSoto Avenue Facility	Production workers	Phone: 1(866) 812-6703
		ORAU/NSSP	
		Construction workers/subcontractor workers	Phone: 1(800) 866-9663
	Downey Facility	CPWR/BTMed	
		Production workers	Phone: 1(866) 812-6703
		ORAU/NSSP	
	Lawrence Berkeley National Laboratory	Construction workers/subcontractor workers	Phone: 1(800) 866-9663
		CPWR/BTMed	
All workers		Eileen Montano Phone: (925) 321-3637	
Sandia National Laboratories (Livermore, CA)	Queens College (QC)/Worker Health Protection Program (WHPP) <i>(Screening originally conducted by Boston University and University of California at San Francisco; transitioned to QC in February 2012)</i>	For scheduling, call: (866) 460-0628	
	QC/WHPP <i>(Screening originally conducted by Boston University and University of California at San Francisco; transitioned to QC in February 2012.)</i>	For scheduling, call: (866) 460-0628	

<sup>1</sup> Sites listed are primary sites served, but multiple small sites are also served by CPWR, through the BTMed, for construction workers and by ORAU, through the NSSP, for production workers.

**Table 1: Listing of Available Medical Screening Providers  
(Continued)**

State	DOE Site <sup>1</sup>	Worker Population/Medical Screening Program Provider	Local Office Location and Phone
Colorado	Rocky Flats	Production workers  ORAU/NSSP <i>(Screening originally conducted by University of CO and National Jewish Medical and Research Center; transitioned to NSSP/ORAU in December 2006.)</i>	Phone: 1(866) 812-6703
		Construction/subcontractor workers  CPWR/BTMed	Maria Rivas-Adams, Colorado BCTC 4704 Harlan Street, Suite 220, Denver, CO 80212 Phone: (720) 987-1296 Phone: 1(800) 866-9663
Florida	Pinellas	Production workers  ORAU/NSSP	Phone: 1(866) 812-6703
		Construction/subcontractor workers  CPWR/BTMed	Phone: 1(800) 866-9663
Idaho	Argonne National Laboratory-West <i>(now Idaho National Laboratory)</i>	Production workers  United Steelworkers (USW)/WHPP	David Fry, or Gaylon Hanson, 1055 Austin Ave. Idaho Falls, ID 83404 Phone: (208) 390-6553, or 1(888) 241-1199
		Construction/subcontractor workers  CPWR/BTMed	Dan Obray Phone: 1(800) 866-9663, or (208) 241-7398
	Idaho National Laboratory	Production workers  WHPP (USW)	David Fry, or Gaylon Hanson, 1055 Austin Ave. Idaho Falls, ID 83404 Phone: 208-390-6553 or 1(888) 241-1199
		Construction/subcontractor workers  CPWR/BTMed	Dan Obray Phone: 1(800) 866-9663, or (208) 241-7398
Illinois	Argonne National Laboratory	All workers  ORAU/NSSP	Phone: 1(866) 812-6703
	Fermi National Accelerator Laboratory	All workers  ORAU/NSSP	Phone: 1(866) 812-6703
Iowa	Ames Laboratory	All workers  University of Iowa (U of I)	Phone: 1(866) 282-5818
	Iowa Army Ammunition Plant	All Line 1/Division B/Burlington Atomic Energy Commission Plant workers, employed 1949-1975  U of I	Phone: 1(866) 282-5818

**Table 1: Listing of Available Medical Screening Providers**  
(Continued)

State	DOE Site <sup>1</sup>	Worker Population/Medical Screening Program Provider	Local Office Location and Phone
Kentucky	Paducah Gaseous Diffusion Plant	Production workers (includes current and former workers) WHPP (USW)	Barry Anderson, or Jim Key, 2525 Cairo Rd. Paducah, KY 42001 Phone: (270) 566-4489, or 1(888) 241-1199
		Construction/subcontractor workers CPWR/BTMed	Ronnie Peck, W. Kentucky BCTC 1930 North 13th St. Paducah, KY 42001 Phone: (270) 443-2850, (270) 557-6722, or 1(800) 866-9663
Missouri	Kansas City Plant	Production workers ORAU/NSSP	Phone: 1(866) 812-6703
		Construction/subcontractor workers CPWR/BTMed	Plumbers and Gas Fitters Local 8, 5950 Manchester Trafficway, Kansas City, MO 64130 Phone: (816) 778-5166, or 1(800) 866-9663
	Mallinckrodt & Weldon Spring	Production workers ORAU/NSSP	Phone: 1(866) 812-6703
		Construction/subcontractor workers CPWR/BTMed	Phone: 1(800) 866-9663
Michigan	Adrian Facility (Bridgeport Brass)	Production workers ORAU/NSSP	Phone: 1(866) 812-6703
		Construction/subcontractor workers CPWR/BTMed	Phone: 1(800) 866-9663
Nevada	Nevada National Security Site and Other DOE Locations in Las Vegas	All workers QC/WHPP <i>(Screening originally conducted by Boston University and University of California at San Francisco; transitioned to Queens College in February 2012.)</i>	Sandie Medina Phone: (702) 485-6724, or 1(877) 771-7977
	Yucca Mountain Nuclear Waste Repository	All workers CPWR/BTMed	Phone: 1(800) 866-9663
New Jersey	Princeton Plasma Physics Laboratory	All workers ORAU/NSSP	Phone: 1(866) 812-6703

**Table 1: Listing of Available Medical Screening Providers**  
(Continued)

<b>State</b>	<b>DOE Site<sup>1</sup></b>	<b>Worker Population/Medical Screening Program Provider</b>	<b>Local Office Location and Phone</b>	
New Mexico	Los Alamos National Laboratory	All workers Johns Hopkins University (JHU)	Rebecca Trujillo, or Joslyn Cordova, JHU FWP 835 Spruce St., Ste. B Española, NM 87532 Phone: 1(877) 500-8615, or (505) 753-0193	
	Sandia National Laboratories Albuquerque	All workers JHU	Phone: 1(877) 500-8615	
	Waste Isolation Pilot Project	Production workers WHPP (USW)	Phone:1(888) 241-1199	
		Construction/subcontractor workers CPWR/BTMed	Phone:1(800) 866-9663	
New York	Brookhaven National Laboratory	Production workers QC/WHPP	Laura Buscemi-Robles Phone:1(888) 241-1199	
		Construction/subcontractor workers CPWR/BTMed	Phone:1(800) 866-9663	
		Shippingport Atomic Power Station	Production Workers ORAU/NSSP	Phone:1(866) 812-6703
	Construction/subcontractor workers CPWR/BTMed		Phone:1(866) 866-9663	
	West Valley Demonstration Project		Production Workers ORAU/NSSP	Phone:1(866) 812-6703
		Construction/subcontractor workers CPWR/BTMed	Phone:1(800) 866-9663	
		Knolls Atomic Power Laboratory	Production Workers ORAU/NSSP	Phone:1(866) 812-6703
	Construction/subcontractor workers CPWR/BTMed		Phone:1(800) 866-9663	
	Ohio		Ashtabula	Production workers ORAU/NSSP



**Table 1: Listing of Available Medical Screening Providers**  
(Continued)

State	DOE Site <sup>1</sup>	Worker Population/Medical Screening Program Provider	Local Office Location and Phone
Ohio (Continued)	Ashtabula	Construction/subcontractor Workers  CPWR/BTMed	Lou Doll, 1550 Chase Ave. Cincinnati, OH 45223 Phone: (513) 681-0864, or 1(800) 866-9663
	Battelle Labs – King Ave. & W. Jefferson	Production Workers  ORAU/NSSP	Phone:1(866) 812-6703
		Construction/subcontractor Workers  CPWR/BTMed	Lou Doll, 1550 Chase Ave. Cincinnati, OH 45223 Phone: (513) 681-0864, or 1(800) 866-9663
	Brush Luckey	Production Workers  ORAU/NSSP	Phone:1(866) 812-6703
		Construction/subcontractor Workers  CPWR/BTMed	Lou Doll, 1550 Chase Ave. Cincinnati, OH 45223 Phone: (513) 681-0864, or 1(800) 866-9663
	GE Evendale	Production Workers  ORAU/NSSP	Phone:1(866) 812-6703
		Construction/subcontractor Workers  CPWR/BTMed	Phone:1(800) 866-9663
	Piqua	Production Workers  ORAU/NSSP	Phone:1(866) 812-6703
		Construction/subcontractor Workers  CPWR/BTMed	Phone:1(800) 866-9663
	Fernald	Production Workers <i>(offered only to workers who began employment after January 1, 1986)</i>  Fernald Settlement Fund <i>(for workers whose employment began before January 1, 1986) and QC/former Fernald Atomic Trades &amp; Labor Council/WHPP (for workers whose employment began after January 1, 1986)</i>	Andrew Breiten, or Mooch Callaway, 207A Walnut Street Lawrenceburg, IN 47025 Phone: (812) 577-0113, (812) 577-0321, or 1(888) 241-1199
		Construction/subcontractor Workers  CPWR/BTMed	Lou Doll, 1550 Chase Ave. Cincinnati, OH 45223 Phone: (513) 681-0864, or 1(800) 866-9663

**Table 1: Listing of Available Medical Screening Providers**  
(Continued)

State	DOE Site <sup>1</sup>	Worker Population/Medical Screening Program Provider	Local Office Location and Phone
Ohio (Continued)	Mound	Production workers WHPP (USW)	Eric Parker, Paige Gibson, & Mike Ball, 40 North Main street, Unit 106 Miamisburg, OH 45342 Phone: (937) 866-6802, or 1(877)866-6802
		Construction/subcontractor Workers CPWR/BTMed	Lou Doll, 1550 Chase Ave. Cincinnati, OH 45223 Phone: (513) 681-0864, or 1(800) 866-9663
	Portsmouth Gaseous Diffusion Plant	Production Workers WHPP (USW)	Jeanne Cisco, USW Local 689 P.O. Box 467 2288 Wakefield Mound Rd. Piketon, Ohio 45661 Phone: (740) 289-2405, or 1(888) 241-1199
		Construction/subcontractor Workers CPWR/BTMed <i>(Screening originally conducted by University of Cincinnati (U of Cinn); transitioned to BTMed in 2006.)</i>	Phone:1(800) 866-9663
Oregon	Albany Research Center	Production Workers ORAU/NSSP	Phone:1(866) 812-6703
		Construction/subcontractor Workers CPWR/BTMed	Phone:1(800) 866-9663
Pennsylvania	National Energy Technology Laboratory	Production Workers ORAU/NSSP	Phone:1(866) 812-6703
		Construction/subcontractor Workers CPWR/BTMed	Lou Doll, 1550 Chase Ave. Cincinnati, OH 45223 Phone: (513) 681-0864, or 1(800) 866-9663
South Carolina	Savannah River Site	Production Workers ORAU/NSSP <i>(Screening originally conducted by Medical University of South Carolina; transitioned to NSSP February 2010).</i>	Phone:1(866) 812-6703
		Construction/subcontractor Workers CPWR/BTMed	Gary Hom 1250 Reynolds St. Augusta, GA 30901 Phone: (706) 722-7272, or 1(800) 866-9663

**Table 1: Listing of Available Medical Screening Providers**  
(Continued)

State	DOE Site <sup>1</sup>	Worker Population/Medical Screening Program Provider	Local Office Location and Phone
Tennessee	Oak Ridge (K-25)	Production workers <i>(includes current and former workers)</i>  WHPP (USW)	John Steward, Billy Eddington and Dennis Pennington, 133 Raleigh Rd. Oak Ridge, TN 37830 Phone: (865) 481-3394, or 3395 1(888)241-1199
		Construction/subcontractor Workers  CPWR/BTMed <i>(Screening originally conducted by U of Cinn; transitioned to BTMed in 2005.)</i>	Kim Cranford, 702 South Illinois Ave., Suite B202 Oak Ridge, TN 37830 Phone: (865) 481-0009, or 1(888) 464-0009
	Oak Ridge (Oak Ridge National Laboratory /Y-12)	Production Workers  QC/Atomic Trades & Labor Council/WHPP	Garry Whitley, Ed Mee, Judy Hensley, 109 Viking Rd. Oak Ridge, TN 37830 Phone: (865) 483-8471 or 8437 or 1(800) 906-2019
		Construction/subcontractor Workers  CPWR/BTMed <i>(Screening originally conducted by U of Cinn; transitioned to BTMed in 2005.)</i>	Kim Cranford, 702 South Illinois Ave., Suite B202 Oak Ridge, TN 37830 Phone: (865) 481-0009, or 1(888) 464-0009
Texas	Pantex	All workers  U. of TX Health Science Center at Tyler	Phone: (806) 378-8939, or 1(888) 378-8939
Washington	Hanford	Production Workers  ORAU/NSSP <i>(Screening originally conducted by U. of WA; transitioned to NSSP in 2007)</i>	Phone:1(866) 812-6703
		Construction/subcontractor Workers  CPWR/BTMed	Jason Sprowl, 2505 Duportail St., Ste. E Richland, WA 99352 Phone: (425) 286-9000, or 1(800) 866-9663
West Virginia	Huntington	Production workers  ORAU/NSSP	Phone: 1(866) 812-6703
		Construction/subcontractor workers  CPWR/BTMed	Phone: 1(800) 866-9663

## How is My Privacy Protected?

---

DOE is required by the Privacy Act of 1974 as amended at title 5, United States Code (U.S.C.) 552a to ensure that individually identifiable information is properly protected when disclosed as a routine use to DOE program award recipients.

The individual programs that hold cooperative agreements with DOE and its contractors are mandated to comply with the Privacy Act and Health Insurance Portability and Accountability Act (HIPAA) rules. All personal information gathered from you for this program will be kept strictly confidential. FWP and the entities that support the program will not release any personal or identifying information about you without your consent, except when required by law.

Other individuals who may require access to your records include:

- Staff or physicians associated with the DOE-funded organizations providing medical screening services to former DOE workers;
- Medical staff at the local health clinic providing medical exams; and
- Medical specialists who provide for additional medical treatment or tests.

Data files without any information that can identify you may be used by the DOE-funded organizations conducting the medical screening or other researchers to better understand the types of risks that you and other workers have been exposed to, or to determine how well this program has met its objectives. Statistical analysis or research using data from this program may be published or presented at scientific meetings, but you will not be identified personally.

In addition to the privacy rights, the rights and welfare of any participant in former worker medical screening or research performed under DOE authorities is of prime importance to the Department. All such activities must comply with Federal regulations and DOE requirements that address the protection of human subjects, including review and approval by applicable IRBs. DOE policy regarding the protection of human subjects is established in the Federal Policy adopted by DOE June 18, 1991, as title 10, Code of Federal Regulations (C.F.R.), part 745.

## Where Can I Receive Additional Information and Assistance?

There are several ways for you to receive additional information and assistance. Specifically, you can directly contact:

- Office of Worker Screening and Compensation Support, EH-14, Office of Health and Safety, U.S. Department of Energy, 1000 Independence Ave., S.W., Washington, DC 20585
  - Ms. Lokie Harmond, FWP Program Manager, [Lokie.Harmond@hq.doe.gov](mailto:Lokie.Harmond@hq.doe.gov), 202-586-5218
- Medical Screening Providers (points of contact listed in Table 1).
- Web-based resources, provided in Table 2 below.

**Table 2: Available Web Resources and Information**

Source/Material	Url/Web Address
Covered Sites/Populations	<a href="https://www.energy.gov/ehss/covered-sitespopulations">https://www.energy.gov/ehss/covered-sitespopulations</a>
FWP Medical Protocol	<a href="https://www.energy.gov/ehss/downloads/former-worker-program-medical-protocol">https://www.energy.gov/ehss/downloads/former-worker-program-medical-protocol</a>
FWP Summary of Services	<a href="https://www.energy.gov/ehss/downloads/former-worker-program-summary-services">https://www.energy.gov/ehss/downloads/former-worker-program-summary-services</a>
Medical Facilities with Experience Evaluating Chronic Beryllium Disease	<a href="https://www.energy.gov/ehss/articles/former-workers-medical-facilities-experience-evaluating-chronic-beryllium-disease">https://www.energy.gov/ehss/articles/former-workers-medical-facilities-experience-evaluating-chronic-beryllium-disease</a>
National Institute for Occupational Safety and Health Dose Reconstruction Disease	<a href="http://www.cdc.gov/niosh/ocas/ocasdose.html">http://www.cdc.gov/niosh/ocas/ocasdose.html</a>
Surveillance Case Definitions	<a href="https://www.energy.gov/ehss/downloads/former-worker-program-surveillance-case-definitions">https://www.energy.gov/ehss/downloads/former-worker-program-surveillance-case-definitions</a>
DOL Division of EEOICPA	<a href="http://www.dol.gov/owcp/energy/index.htm">http://www.dol.gov/owcp/energy/index.htm</a>
DOL Office of the Ombudsman for the EEOICPA	<a href="http://www.dol.gov/eeombd/">http://www.dol.gov/eeombd/</a>



**Table 2: Available Web Resources and Information**  
(Continued)

Source/Material	Url/Web Address
Building Trades National Medical Screening Program	<a href="https://www.btmed.org">https://www.btmed.org</a>
Medical Exam Program for Former Workers at LANL	<a href="https://www.jhsph.edu/research/affiliated-programs/medical-exam-program-for-former-workers-at-los-alamos-national-laboratory/index.html">https://www.jhsph.edu/research/affiliated-programs/medical-exam-program-for-former-workers-at-los-alamos-national-laboratory/index.html</a>
Former Worker Medical Screening Program for Burlington Atomic Energy Commission Plant and Ames Laboratory	<a href="https://iowafwp.public-health.uiowa.edu/">https://iowafwp.public-health.uiowa.edu/</a>
Worker Health Protection Program	<a href="http://www.worker-health.org/">http://www.worker-health.org/</a>
National Supplemental Screening Program	<a href="https://www.ornl.gov/nssp/">https://www.ornl.gov/nssp/</a>



*Department of Energy, Savannah River Site*

## Points of Contact

---

For additional information or assistance, please contact:

- **Kevin Dressman**

Director, Office of Health and Safety, EH-10  
Office of Health, Safety and Security  
Phone: (301) 903-5144  
Email: [kevin.dressman@hq.doe.gov](mailto:kevin.dressman@hq.doe.gov)

- **Gregory Lewis**

Director, Office of Worker Screening and Compensation Support, EH-14  
Office of Health, Safety and Security  
Phone: (202) 586-2407  
Email: [gregory.lewis@hq.doe.gov](mailto:gregory.lewis@hq.doe.gov)