

# San Pasqual Band of Mission Indians Community Solar Project



Tribal DOE Conference | November 15, 2022

# San Pasqual General Information

- Reservation was established in 1910
- The Reservation encompasses approximately 3,143 acres
- 152 enrolled tribal members and over 1,400 lineal descendants
- Reservation population is 2,100
- 450 homes on the reservation
- 93 homes have solar
  - 55 GRID
  - 23 DOE Grant (2016)
  - 15 private solar companies





# San Pasqual Band of Mission Indians Trust and Fee Lands

 Trust Land (1,990 US Acres)  
 Fee Land (1,153 US Acres)  
[3,143 Total US Acres]

 Valley  
Center  
Middle

Center

Woods Valley  
Golf Club

San Pasqual  
Reservation



Date Created: 4/20/2018

Source: San Pasqual Band of Mission  
Indians Environmental Department



Esri, HERE, Garmin, © OpenStreetMap contributors, and the GIS user community, Source: Esri, DigitalGlobe, GeoEye, Earthstar Geographics, CNES/Airbus DS, USDA, USGS, AeroGRID, IGN, and the GIS User Community



# Project Details and Goals

Install a 223kW solar community scale energy generating system for residential homes on the San Pasqual Reservation

2 elevated carport PV systems located at the San Pasqual Community Park

Reduce the monthly San Diego Gas & Electric (SDGE) electric bill cost burden of 80 residential homes and 1 government building/account

Distribute 90% to 95% of benefits to residential subscribers and 10% to 5% to the government building/account

Planning to reduce monthly electrical bills by 50%



Currently have 55 residents completed through the onboarding process (application filled out, energy data collected and analyzed, orientation meeting)



Targeted goal is to reduce monthly electrical bills of all residential participants by 50%

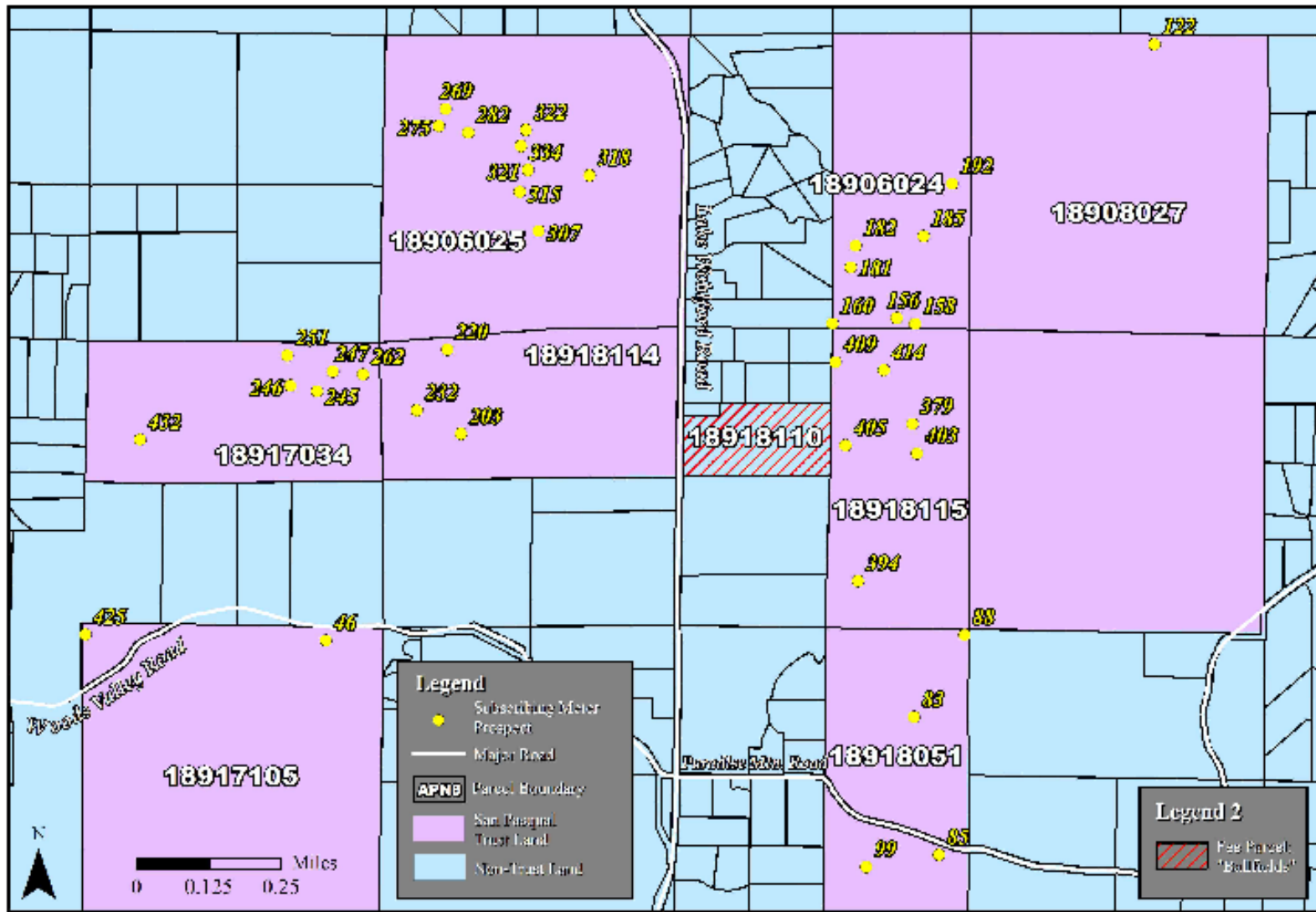


Subscription based model: residents pay a \$25 monthly subscription fee to help pay for all O&M



Worked with SDGE to identify the 55 subscriber accounts to pass on the monthly savings

# Project Details and Goals

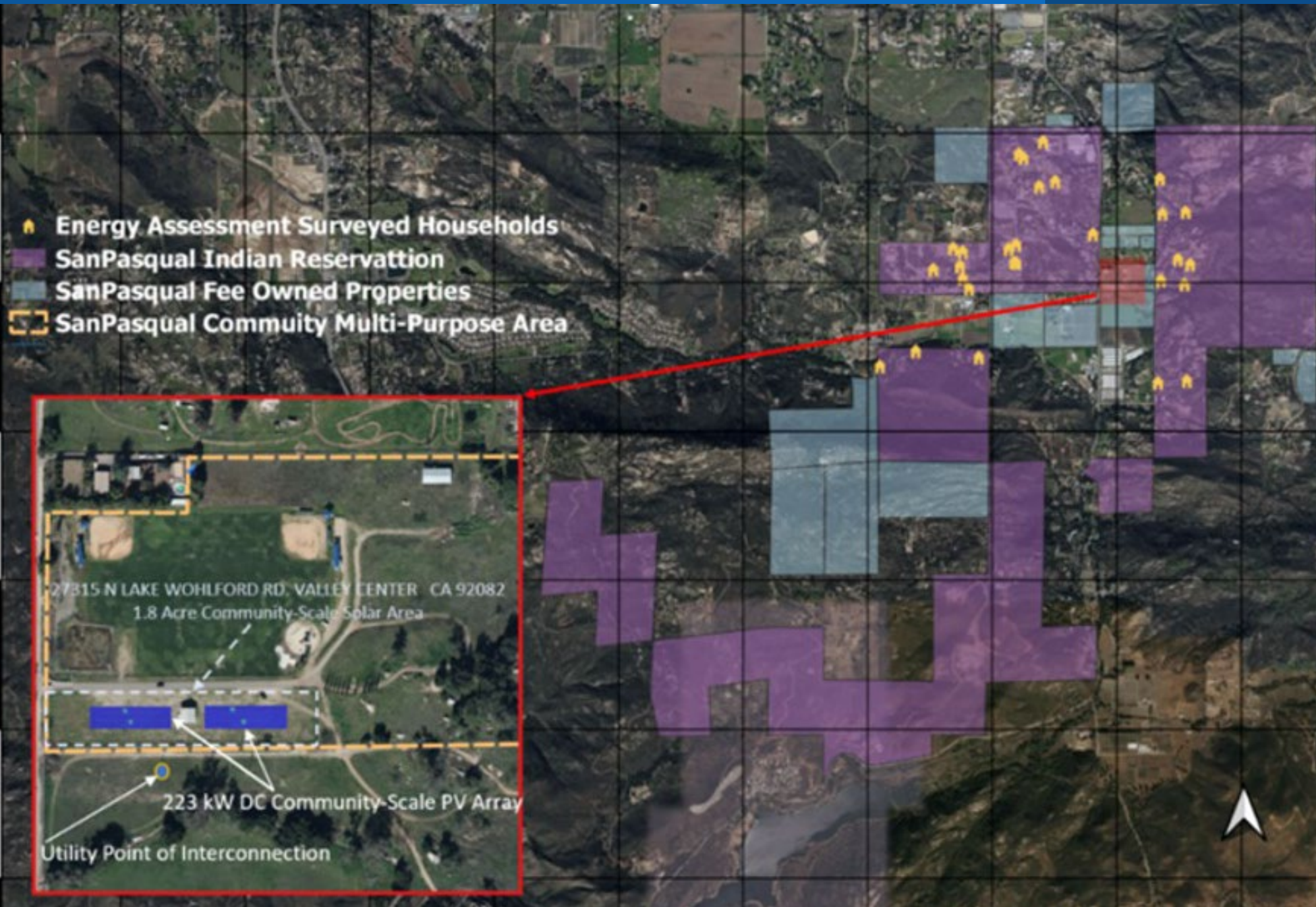


## Tribal Community Solar Residential Survey

Source: San Pasqual Band of Mission Indians Planning Department  
Date Created: 7/21/2026







- 🏠 Energy Assessment Surveyed Households
- 🟪 SanPasqual Indian Reservation
- 🟩 SanPasqual Fee Owned Properties
- 🟨 SanPasqual Community Multi-Purpose Area

27315 N LAKE WOHLFORD RD, VALLEY CENTER CA 92082  
1.8 Acre Community-Scale Solar Area

223 kW DC Community-Scale PV Array

Utility Point of Interconnection

# Subscriber Prospecting and Framework Governance: Community Engagement

Community energy  
survey drafted,  
released, and responses  
from Tribal Citizens  
received

Individual household  
energy use data  
collected + Residential  
financial modeling

Community outreach  
meetings to educate  
successful

Dual Tribal Government  
water and electric  
management structure  
designed



# Subscriber On-boarding, Governance, and Contractual: Asset Management

Community response  
and on-boarding for  
SPBMI Residents and  
utility data

Contractual  
templates drafted  
(Residential  
Subscribers)

Utility billing  
software selected:  
Muni – Link

# Site Selection and Permitting: Utility Engagement

Asset site approved

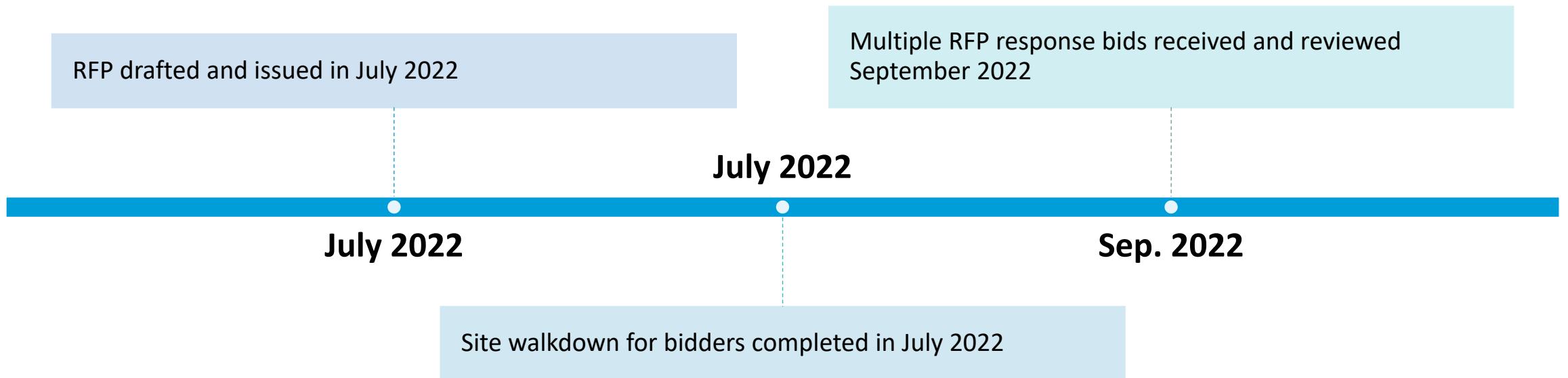
```
graph TD; A[Asset site approved] --> B[Point of Interconnection approved by SDG&E]; B --> C[Interconnection application submitted to SDG&E]; C --> D[SDG&E engineering invoiced and paid];
```

Point of Interconnection approved by SDG&E

Interconnection application submitted to SDG&E

SDG&E engineering invoiced and paid

# Engineering Design and GC NTP Authorization: Asset Construction





# Covid – 19 Impacts and Economic Impact

Government priorities shifted to community health and safety: No in person community meetings until spring 2021

Significant Impacts on Community engagement: Number of necessary community engagements more than doubled, energy data gathering slowed significantly, Tribal citizens' lives impacted with Covid

Utility/RFP/EPC/Third-party engagement delayed significantly

Supply chain and utility delays amplified

Inflation and cost of materials increasing beyond original budget (FY20 --- FY22) : Steel, aluminum, panels, labor, and diesel have all increased

Q&A



# Closing Remarks

John Flores

Environmental Director

760 – 310 – 6697

[johnf@sanpasqualtribe.org](mailto:johnf@sanpasqualtribe.org)

