



U.S. DEPARTMENT OF
ENERGY

OFFICE OF
**ENVIRONMENTAL
MANAGEMENT**

WVDP Project Update

John Rendall
Deputy General Manager

Quarterly Public Meeting
May 27, 2020
(Virtual)



U.S. DEPARTMENT OF
ENERGY

OFFICE OF
**ENVIRONMENTAL
MANAGEMENT**

Prior to COVID-19



Representatives from DOE, CHBWW and Cattaraugus County Sheriff's Department recognize Captain James Madden for his life-saving response to a fellow officer.

| Metric | May 2020 12-Month Rolling Average |
|---------------------------------|-----------------------------------------|
| TRC (12-Month Rolling Average) | 0.00 |
| DART (12-Month Rolling Average) | 0.71 |
| Last Lost Time Case Recordable | June 2019 |
| Last Recordable Injury | March 2019 |

Performance Based Incentive 1 (PBI #1)

- Demolish and remove the Main Plant Process Building (Deactivation ongoing)

Performance Based Incentive 2 (PBI #2)

- Complete all work in Performance Work Statement, including Balance of Site Facilities, Surveillance and Maintenance, and Site Operations (Ongoing)

Deactivation and Demolition Progress

- PBI #1- Main Plant Process Building Deactivation – 98% Completed
- PBI #2- Balance of Site Facilities Demolition – 44 of 47 Facilities Completed and Areas Restored (94%)



PBI #1– General Purpose Cell



Operators size-reduce debris inside GPC



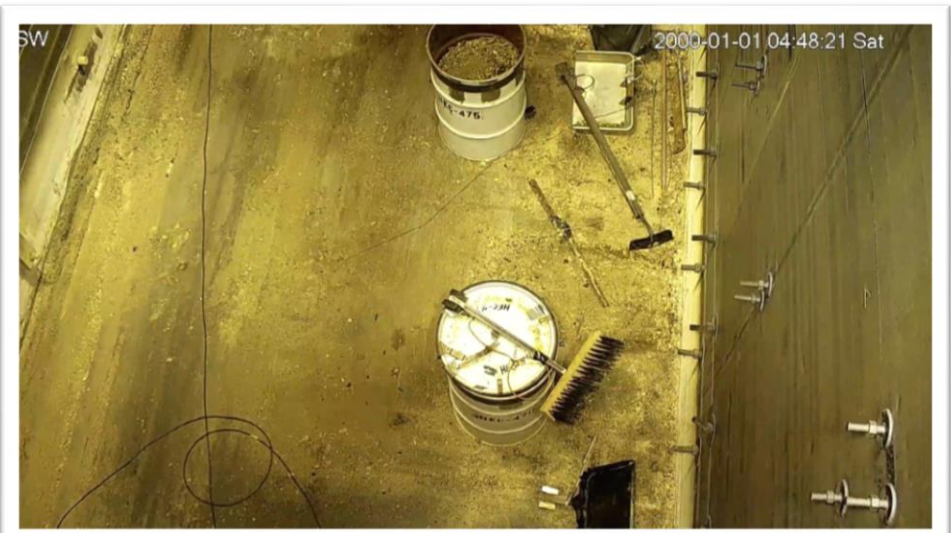
GPC northwest corner cleaning progress

General Purpose Cell (GPC)/General Purpose Crane Room (GCR)/General Operating Area (GOA) – Performed additional patching of wall cracks in the General Purpose Crane Room Extension (GCRE) in an attempt to mitigate water infiltration. Installed new hoist on Equipment Decontamination Room (EDR) crane which is needed to support waste container movement. Continue to perform de-watering of the GCR due to surface water infiltration through GCRE deteriorated walls.

PBI #1– General Purpose Cell



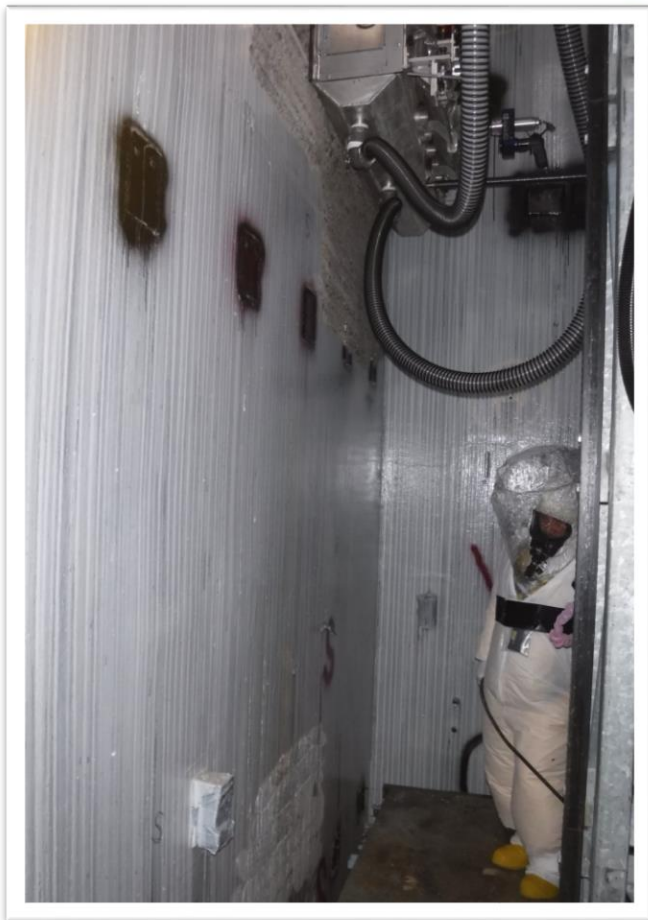
Before (12/05/19)



After (1/28/20)

General Purpose Cell (GPC)/General Purpose Crane Room (GCR)/General Operating Area (GOA) – Before and after photos of ongoing cleanup

PBI #1– Product Purification Cell - South



(l) An operator inside the PPC-S checks the lower portion of a wall before beginning operations. (r) Nitrocision[®] box is positioned on an upper portion of the PPC-S wall.

Product Purification Cell - South – Aggressive decontamination with Nitrocision[®] was performed on the south wall of the cell prior to COVID-19.

PBI #1– Fuel Receiving and Storage Facility



Workers foam piping in FRS to fix contamination



Wooden platform is built to aid in ACM removal

Fuel Receiving and Storage (FRS) Facility – Completed asbestos-containing material removal and air-gapping of utility piping inside the FRS and characterization/stabilization of pool water circulation piping.

PBI #1– Vent Wash Room



Inside Vent Wash Room



Concrete diamond-cut saw mockup

Vent Wash Room – Set up a mockup for the pump that will provide water to the concrete cutting diamond chainsaw. This saw will be used to cut an access opening into the east wall.

Demolition of 7 Ancillary Support Structures – PBI #1

- To date, five out of seven buildings have been completed:
 - Contact-Size Reduction Facility
 - Manipulator Repair Shop
 - Laundry Facility
 - Utility Room Extension
 - Main Plant Office Building

- Next demolitions: Schedule
 - Utility Room *June 2020
 - Load-In **2023

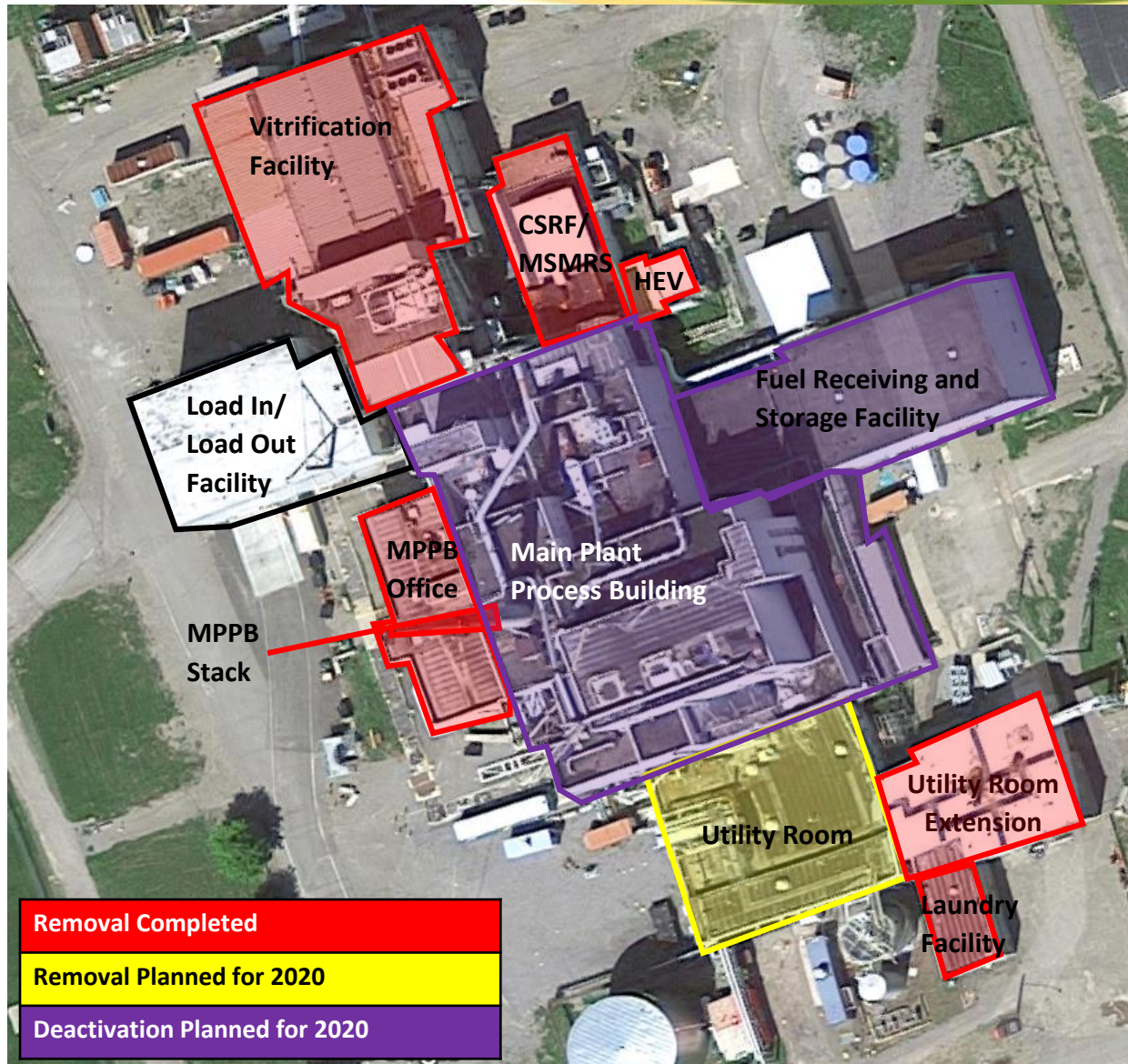
*Schedule contingent on resumption of work
****Will be used during Main Plant demolition**

Utility Room



Load-In Facility

Demolitions and Deactivation – PBI #1



Ancillary Support Building Demolitions Utility Room – PBI #1



Performed air-gapping of isolated electrical conduits between the MPPB and Utility Room. Completed final outage and transfer of loads to MCC-008. Heavy-duty equipment has been mobilized and prepared for demolition.

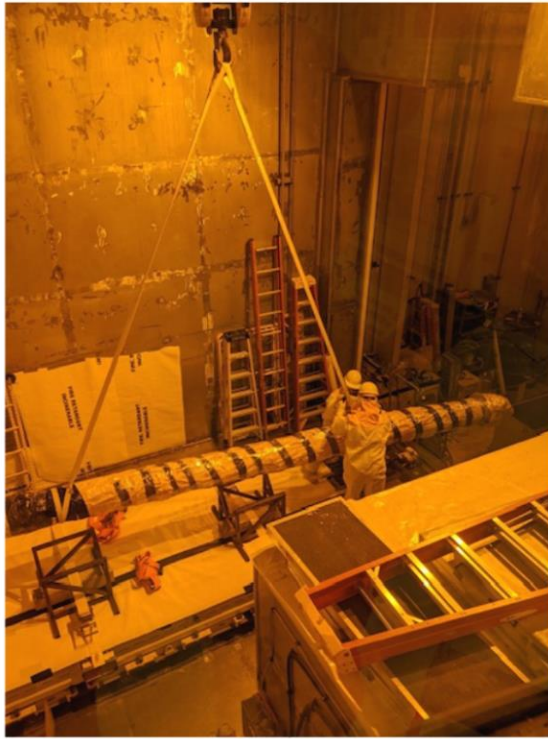
Balance of Site Facilities (BOSF) and Infrastructure – PBI #2

- Performing deactivation to support removal of 47 Balance of Site Facilities
 - Chemical Process Cell–Waste Storage Area was the last structure to be demolished (restoration ongoing)
 - 44 facilities demolished and areas restored

CPC-WSA demolition



Remote-Handled Waste Facility – PBI #2



Inside RHWF moving 4C-1 Vessel



4C-1 Vessel loaded in box

Remote-Handled Waste Facility – Performed contact-handled waste processing activities in the Waste Processing Area. Two of seven containers were completed.



U.S. DEPARTMENT OF
ENERGY

OFFICE OF
**ENVIRONMENTAL
MANAGEMENT**

After COVID-19

Partial Stop Work Order

- The COVID-19 pandemic resulted in the curtailment of work activities at DOE sites across the United States.
 - In response, the DOE provided CHBWV contract direction to implement a partial stop work on March 20, 2020.
- On March 26, the Department of Energy safely and efficiently transitioned the site and Ashford Office Complex to an Essential Mission Critical Activities level of onsite staffing. This means that onsite personnel are limited to just those individuals necessary to maintain **Essential Mission Critical** operations.
 - **Essential Mission Critical** operations activities include, but are not limited to, critical compliance inspections, environmental monitoring, mitigation of emergent conditions, accounting, payroll, security and critical preventative maintenance.
- CHBWV implemented the maximize use of off-site teleworker support for other activities.
- Off-site individuals remain on-call in the event they are needed to support in-person emergent work.



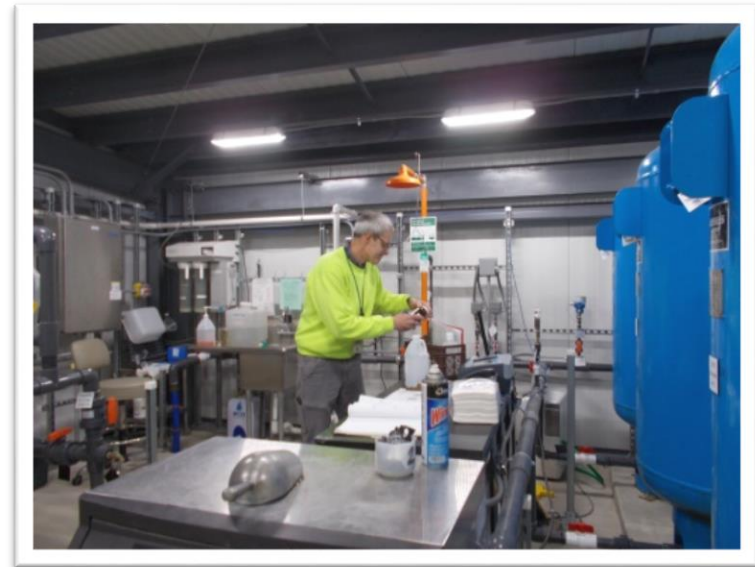
U.S. DEPARTMENT OF
ENERGY

OFFICE OF
**ENVIRONMENTAL
MANAGEMENT**

Essential Mission Critical Activities



Dam inspection



Potable water sampling



Essential Mission Critical Activities



Work on additional office space to increase social distancing





U.S. DEPARTMENT OF
ENERGY

OFFICE OF
**ENVIRONMENTAL
MANAGEMENT**

Essential Mission Critical Activities



Offloading materials
and supplies



Lawn mowing



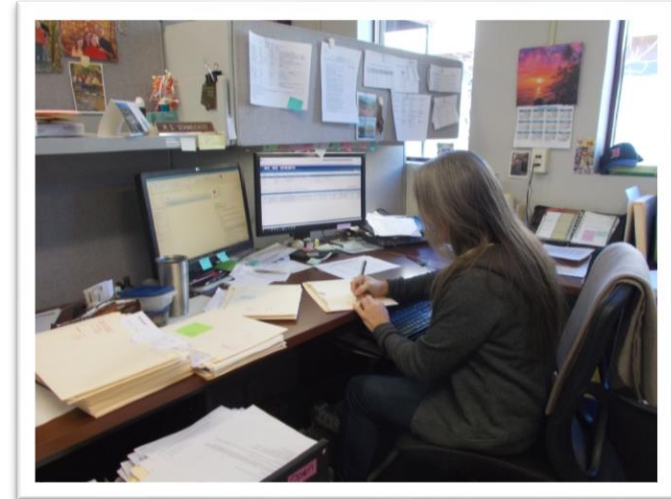
U.S. DEPARTMENT OF
ENERGY

OFFICE OF
**ENVIRONMENTAL
MANAGEMENT**

Essential Mission Critical Activities



Site maintenance



Procurement



U.S. DEPARTMENT OF
ENERGY

OFFICE OF
**ENVIRONMENTAL
MANAGEMENT**

Essential Mission Critical Activities

Payroll



Printing



Admin.
Support

