



West Valley Demonstration Project Phase I Decommissioning Project Update



One Project. One Team. One Goal.

Presented by: Dan Coyne, President

Ray Geimer, Deputy

CH2M HILL B&W West Valley

February 27, 2013

www.em.doe.gov



EM Environmental Management

safety ❖ performance ❖ cleanup ❖ closure

Field Work

Permeable Treatment Wall

- DOE EM awarded WVDP sustainability “honorable mention” for operation of the permeable treatment wall (PTW) (strontium- 90 removal)
 - Sr-90 levels in intra-PTW wells substantially lower than up- and down- gradient wells
 - Most down-gradient wells have decreased by approximately 75% or more in Sr-90 concentrations

Status of Phase I Characterization and Sampling Plan (CSAP) work performed by SEC Contractors

- No additional field work completed since November
- Additional field work to be completed after the demolition of the Balance of Site Facilities



EM *Environmental Management*

safety ❖ performance ❖ cleanup ❖ closure

www.em.doe.gov

Main Plant Process Building Accomplishments

- Completed pre-demolition activity in the Lower Extraction Aisle (LXA) and continued in Chemical Operating Aisle (COA) for systems disposition
- Completed asbestos abatement in Cold Lab of Analytical Aisle and continued in Radio-Chemical Lab
- Completed clean out of Lab Hoods in Radio-Chemical Lab
- Continued interference (piping/electrical) removal for accessing Liquid Waste Cell



Chemical Piping Removal in LXA/COA



Radio-Chemical Lab Prepared for Asbestos Containing Material Removal



EM Environmental Management

safety ❖ performance ❖ cleanup ❖ closure

www.em.doe.gov

Vitrification Facility Accomplishments

- Continued disposition of out of service piping systems in aisles and at cell walls
- Continuing clean out (down draft table size reduction) of Vit Cell in preparation for high level waste canister decontamination



Vit Cell Equipment to be Size Reduced



Out of Service Piping
Air Gapping

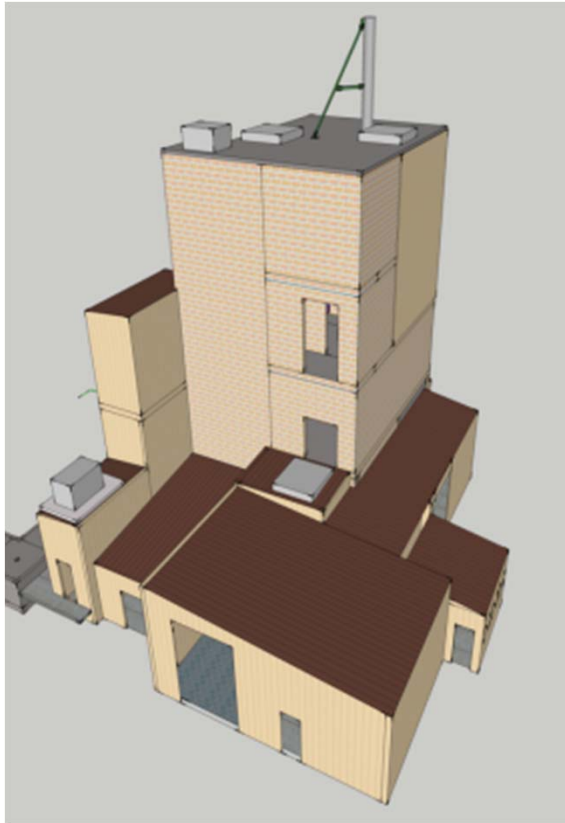


EM Environmental Management

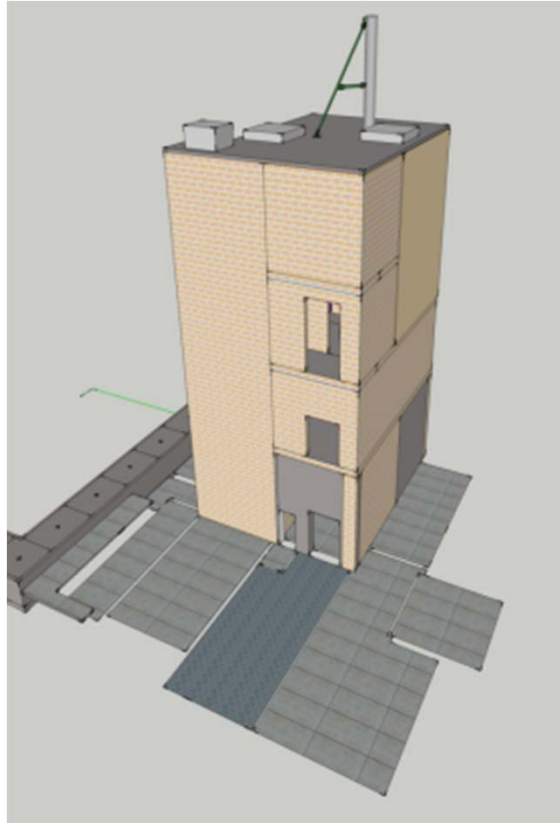
safety ❖ performance ❖ cleanup ❖ closure

www.em.doe.gov

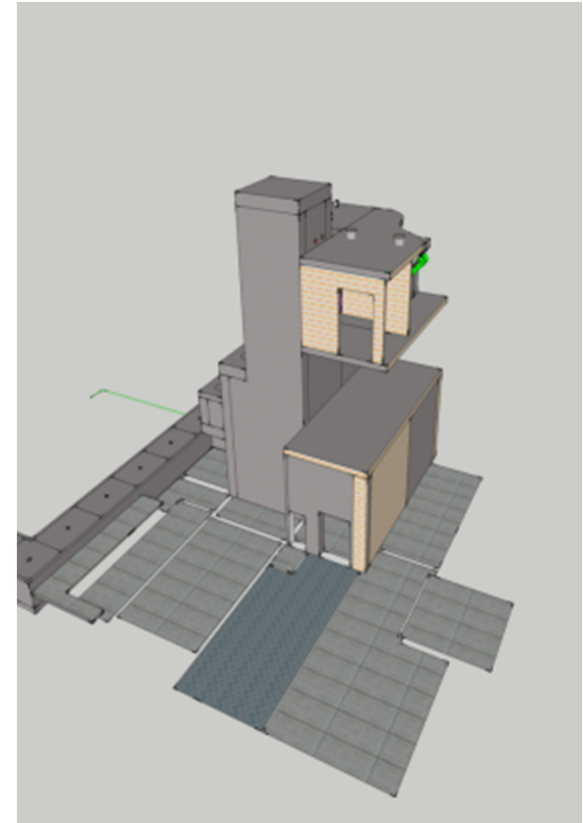
01-14 Building: Steps to Demolition



Original Construction



Step 1 Complete



After Step 2 – In Progress



EM Environmental Management

safety ❖ performance ❖ cleanup ❖ closure

www.em.doe.gov

01-14 Building Accomplishments

- Completed deactivation of facility
- Completed Step 1 and most of Step 2



01-14 Building Demolition
December 19, 2012 Step 1



01-14 Building Demolition
February 22, 2013 – Step 2



EM Environmental Management

safety ❖ performance ❖ cleanup ❖ closure

www.em.doe.gov

Balance of Site Facilities Accomplishments

- Completed demolition of:
 - Three of Four Hazardous Waste Lockers
- Completed waste load out of:
 - Old Warehouse
 - Vehicle Repair Shop
 - Vitrification Test Facility Waste Area Slab
 - Waste Tank Farm Test Tower
 - Hazardous Waste Lockers
- Received New York State Department of Environmental Conservation (NYSDEC) approval of Hazardous Waste Locker RCRA certification



**Hazardous Waste Locker
Demolition**



EM Environmental Management

safety ❖ performance ❖ cleanup ❖ closure

www.em.doe.gov

Waste Shipping and Packaging Accomplishments

- Completed over 80 safe and compliant offsite waste shipments since contract start
- Total volume of legacy waste shipped since contract start:
 - 44,793 ft³ Low Level Waste (LLW)
 - 1,607 ft³ Mixed Low Level Waste (MLLW)
 - 120 ft³ hazardous and universal waste
 - 976 ft³ industrial waste



Loading LLW shipment in LSA 4



LLW shipment to Nevada National Security Site



EM Environmental Management

safety ❖ performance ❖ cleanup ❖ closure

www.em.doe.gov

Waste Shipping Accomplishments

- Total volume of newly generated waste shipped since contract start:
 - 4,846 ft³ LLW
 - 110 ft³ MLLW
 - 204 ft³ hazardous and universal waste
 - 42,590 ft³ industrial waste



Waste Load Out of the Old Warehouse Pad



Preparing intermodals for demolition activities and loading of newly generated LLW



EM Environmental Management

safety ❖ performance ❖ cleanup ❖ closure

www.em.doe.gov

Remote-Handled Waste Processing

- Continued size reduction on top and mid-section of the 3C-2 dissolver (90% complete) - Packaging the majority of the waste as low level
- Implemented several process efficiencies to improve size reduction operations



EM *Environmental Management*

safety ❖ performance ❖ cleanup ❖ closure

www.em.doe.gov

Questions?



EM *Environmental Management*

safety ❖ performance ❖ cleanup ❖ closure

www.em.doe.gov