



U.S. DEPARTMENT OF
ENERGY

OFFICE OF
**ENVIRONMENTAL
MANAGEMENT**

WVDP Project Update

Main Plant Process Building Deactivation and Demolition Preparations

Kelly Wooley

Deputy General Manager

Quarterly Public Meeting

February 23, 2022

(Virtual)

2021 Accomplishments

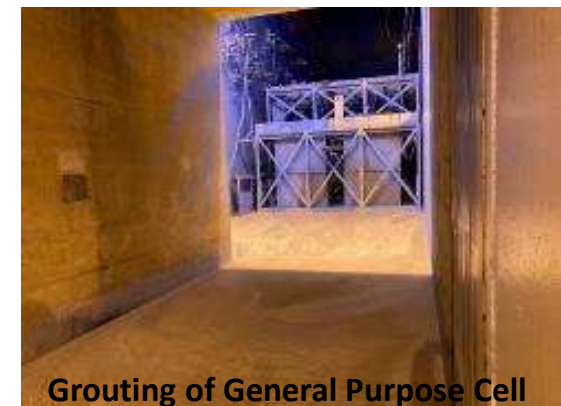
- Restored rail shipment capabilities for the site
- Continued preparation for the Main Plant Process Building (MPPB) demolition by:
 - Installing a new water collection and treatment system
 - Repurposing an administrative trailer complex into a multipurpose building to support MPPB demolition activities
- Completed deactivation of the General Purpose Cell, General Purpose Cell Crane Room, General Purpose Cell Crane Room Extension, and General Operating Aisle making them ready for future demolition
- Removed the west wall of the MPPB to continue deactivation activities inside the Acid Recovery Cell
- Continued aggressive decontamination in the Product Purification Cell-South (PPC-S)
- Removed a septic system and well associated with a former schoolhouse and restored the area, completing the removal of 46 'balance of site' facilities, which are structures no longer needed for current or future cleanup efforts



Rail shipments resume at the site




Water Management System



Grouting of General Purpose Cell

Safety



Metric	January 2021 12-Month Rolling Average
Total Recordable Cases (TRC)	0.68
Days Away Restricted or Transferred (DART)	0.34
Last Lost Time Case Recordable	May 1, 2021
Last Recordable Injury	August 27, 2021

COVID-19 Controls

- Prior to the court injunction, CHBWV strictly implemented the Safer Federal Workforce Task Force *“COVID-19 Workplace Safety Guidance for Federal Contractors and Subcontractors,”* which required ‘covered contractor employees’ to be fully vaccinated no later than December 8, 2021
- After the court injunction, and for the safety and protection of the workforce, CHBWV chose to continue to implement the requirements for vaccinations
- COVID-19 Phase 2 activities such as system rounds, preventive maintenance and cleaning/sanitizing activities continue with an increased emphasis on basic safety measures (e.g., washing your hands frequently, refraining from touching your face, utilizing face protection, use hand sanitizer and disinfectant wipes, etc.)
- CHBWV continues to monitor regional COVID-19 statistics and its personnel in accordance with Centers for Disease Control and Prevention (CDC) guidance

Main Plant Deactivation

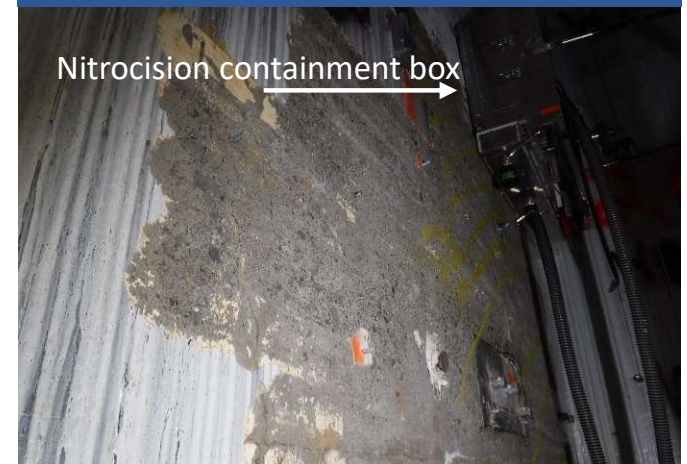
- **Product Purification Cell (PPC)** – Completed modifications to the Mast Climber (used to move workers up and down) and continued aggressive decontamination activities on south wall (cell decontamination status is 1,010 of 2,400 square feet completed to date)
- **Ventilation Wash Room (VWR)** – Continuing diamond wire cutting removal of vent duct (27 of 28 cuts complete; and 18 of 19 sections removed)



Section of cut vent duct in VWR



(Top) Bottom of Mast Climber;
(Below) wall inside PPC-S after
aggressive decontamination
(Jan. 22)

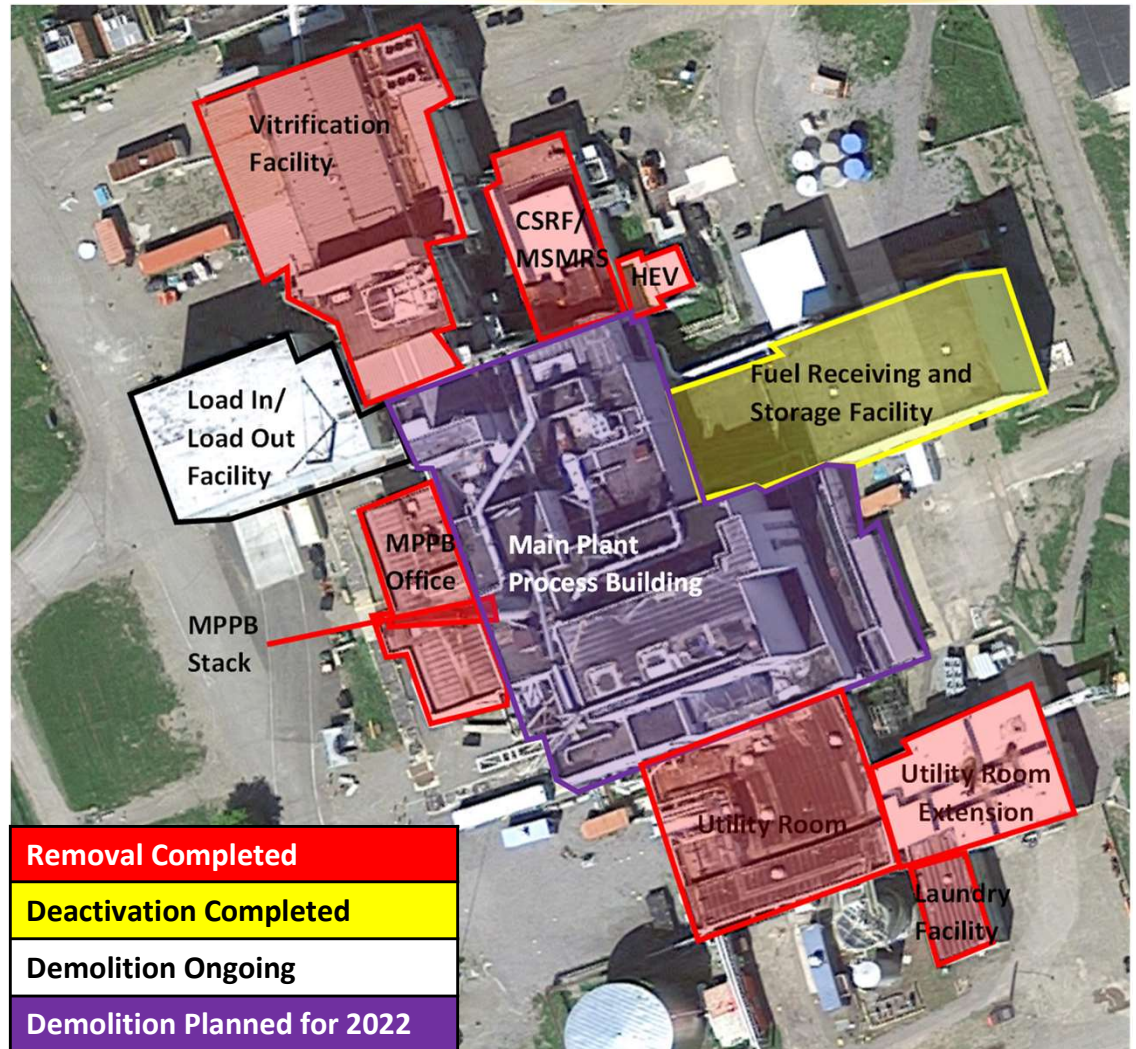


Demolition of Ancillary Support Structures

- **Load-In/Load-Out Facility –** Continued demolition and waste loadout



Load-In Facility Demolition

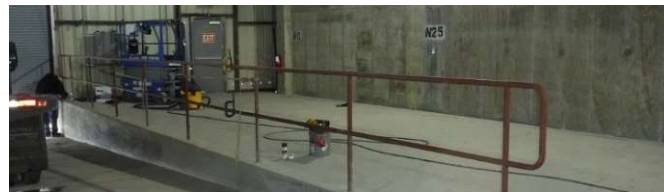


**Ancillary support structures surround the Main Plant (six of seven structures have already been demolished)*

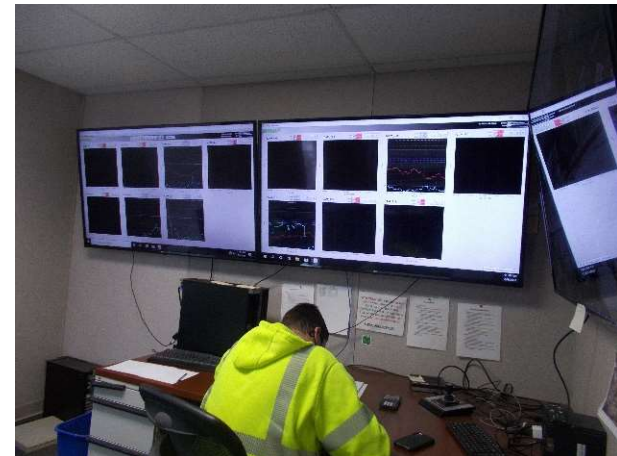
Main Plant Demolition Preparations

- **Water Management System** – Continuing to finalize testing, training, PMs and calibrations; finalizing Standard Operating Procedures for operation of the system and sending them to reviewers for comment; system targeted to be ready by mid-March
- **10-Plex Office Complex** – All activities completed
- ***Drum Cell Modifications** – Crews installed a new handrail and are finishing minor punch list items

**Will be used for preparing intermodals during Main Plant demolition*



New handrail installed in Drum Cell



10-Plex: (Top) Radiation Monitoring Control Room and (Below) Respiratory Protection Issuance Desk



Balance of Site Facilities and Infrastructure

- **Permeable Treatment Wall (PTW) Activities**
 - Continued preparing and filling intermodals (IMs) of soil and debris from the PTW soil containment structure
 - As of February 8, 2022:
 - Filled and characterized 300 (soil) and 121 (debris) intermodals
 - Shipped 400 IMs to *EnergySolutions* on 73 rail cars
 - Received and prepared 231 empty intermodals



PTW soil and structure
removal project (February 2022)



NEW WORK SCOPE:

- **New Guard House** – Request for bids for the design and installation of the new guardhouse were distributed to several firms. Bids due early March 2022
- **Legacy Waste (CPC Degraded Containers)** – Received one drawing from the vendor for a shielded overpack; drawing is under an internal review; and delivery is still expected in the third quarter of 2022
- **Tank Sampling (8D-4)** – Continue to develop plans for the type of sampling needed to characterize waste (~1,100 gallons of sludge and ~2,800 gallons of liquid) in underground tank 8D-4 (Tank Farm); looking at modifications needed to support sampling activities
- **Lagoon 4/5 Re-Route** – Conceptual design of the re-route being developed

2021 Community Support

- Community Service Donations
 - West Valley Fire District #1: \$70,000
 - Bertrand Chaffee Hospital: \$5,000
 - Mercy Flight: \$5,000
- Annual Community Donations:
~\$12,000
- Annual Food Drive
 - Collected 119,467 pounds of food
 - Food delivered to nine food pantries
 - All done by volunteers on their day off
- United Way: \$15,945



FY2022 Goals

- Perform all work safely and in a manner that meets or exceeds all requirements
- Complete deactivation activities in the Product Purification Cell, and complete disposition of the waste
- Complete remaining MPPB demolition preparations and readiness activities
- Begin demolition of the MPPB and ship 4 million pounds of debris
- Begin rail shipments from WVDP for MPPB demolition
- Complete PTW soil containment excavation and disposal, and restore the area
- Process and overpack degraded containers
- Complete demolition of Load-In Facility