

# CHBWV Project Overview

---

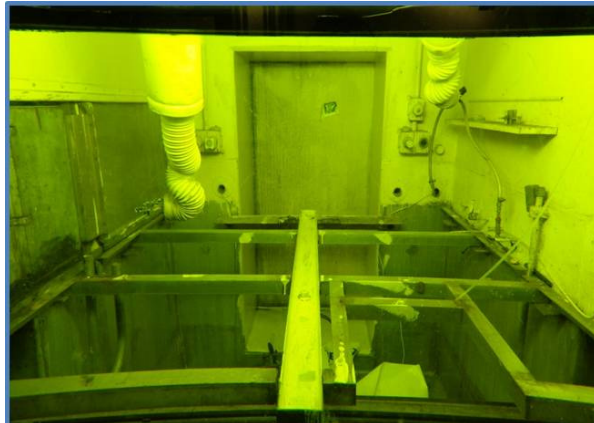
**Daniel Coyne**

*President and General Manager*  
CH2M HILL B&W West Valley

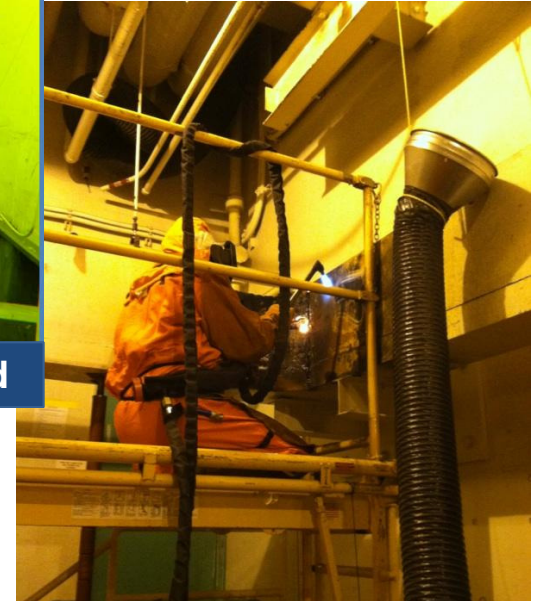
**November 20, 2013**

## Main Plant Process Building (MPPB)

- Completed tank sampling in Liquid Waste Cell
- Completed characterization of High Hazard areas
- Commenced asbestos abatement in 3<sup>rd</sup> floor office area
- Continued deactivation of Upper Warm Aisle and Hot Cells



Hot Cell w/ Floor Pan Removed



Torch Cutting Access into Shielded Pipe Chase

## Vitrification Facility

- Continued clean out of miscellaneous equipment, materials & debris from Vit Cell

# Balance of Site Facilities (BOSF) Accomplishments

Completed deactivation,  
demolition, and waste  
loadout of:

- Vitrification Diesel Fuel Oil Tank Storage Pad
- New Cooling Tower
- Vit Hill Trailers
- Expanded Environmental Lab



Vit Diesel Fuel Oil Pad – Before & After Demo



Vit Hill Trailer & New Cooling Tower Demo



E-Lab Demo



## Legacy Low-Level (LLW) and Mixed LLW Disposition

- Repackaging in the Waste Processing Area (WPA)
  - Completed 431 drums and 74 B-25 boxes
- Legacy waste shipped contract-to-date
  - 70,751 ft<sup>3</sup> of LLW
  - 4,992 ft<sup>3</sup> of MLLW
  - Shipped 332 high moisture content LLW containers



## Legacy Remote-Handled (RH) Waste Disposition

- High-dose RH-TRU drums in the Chemical Process Cell (CPC)
  - Completed removal of the first 48 drums
  - Removed 48 empty drum stackers
  - Evaluated removal and processing options for remaining ~140 high-dose drums
- Completed repacking and consolidating 25 containers of RH-MLLW in the RHWF



EDR Operations Supporting the Removal of HEC Drums from CPC Removal



Moving Kistners Containing HEC Drums to Storage

## New Generation Waste Disposition Contract-to-date

- Shipped 472 ft<sup>3</sup> Hazardous/Universal Waste
- Shipped 92,961 ft<sup>3</sup> Industrial Waste
- Shipped 114,379 ft<sup>3</sup> low-level waste (LLW)
- Shipped 737 ft<sup>3</sup> mixed low-level waste (MLLW)



Building 01-14 LLW Shipment to Alaron



Preparing LLW Shipments in LSA 3



## Vitrification Melter, Concentrator Feed Make-up Tank (CFMT) and Make-up Feed Hold Tank (MFHT)

- Completed grouting of Melter package



Melter, CFMT, and MFHT



Melter Package Grouting

CHBWV - HLW PAD 2013-11-11 12:56:28



HLW Pad Construction

## August 27, 2013

- Contractor mobilized

## October 22 and 29, 2013

- Main pad sections poured

## November 11, 2013

- Approach pad construction underway



# HLW Storage Pad, Continued



~ 300 deliveries (10,885 tons)  
of fill placed



Compaction Testing



~ 133 tons rebar placed



~1,800 cu-yds of concrete



# High-Level Waste Accomplishments

Constructing Fabrication Pad



Constructing Cask Rebar/Form



Cask Liners



Cask Lid



Placing Cask Concrete





**First 8 Vertical Storage Casks Fabricated**



# Questions?