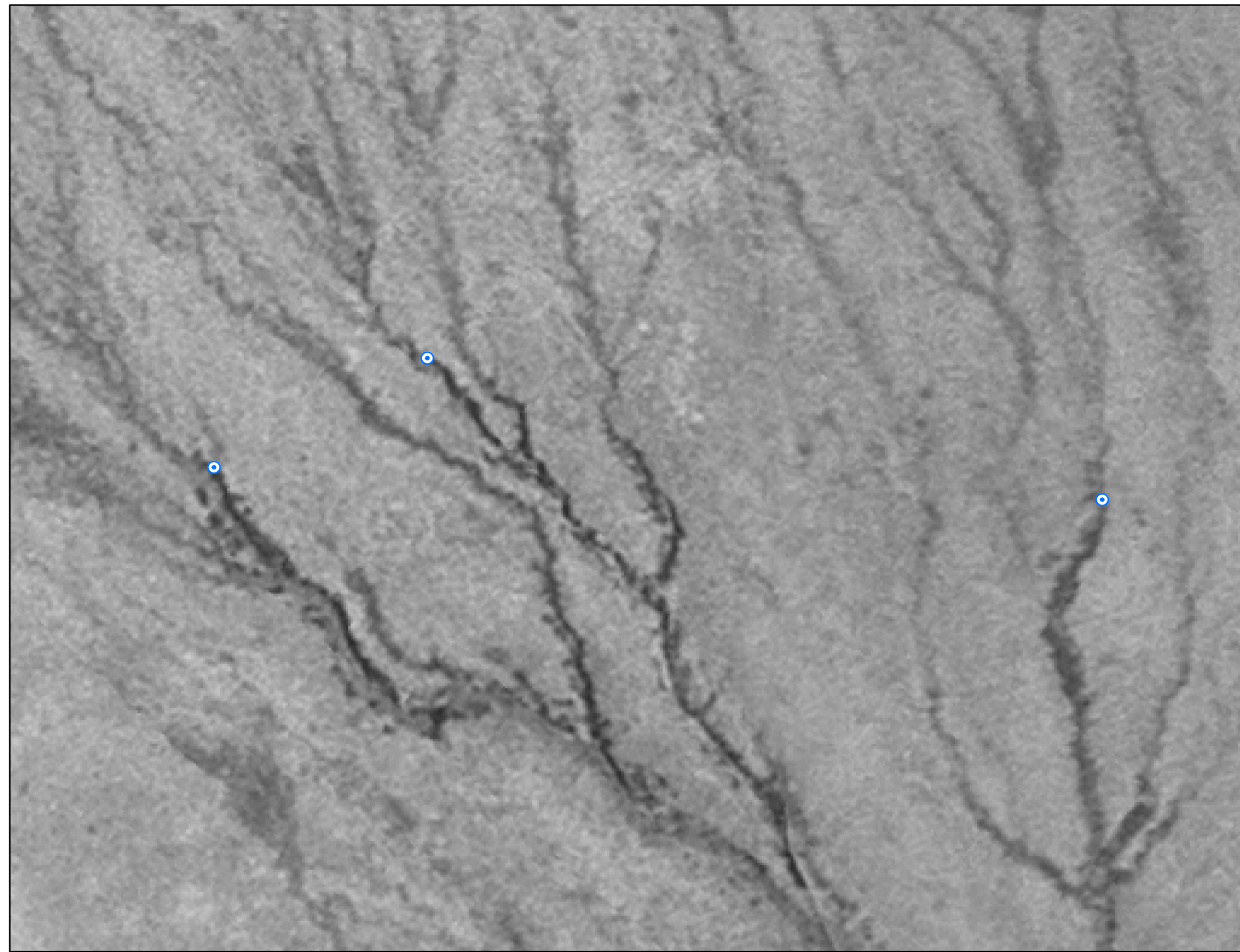


1944 AERIAL PHOTOGRAPH

1:1,200  
1 INCH = 100 FEET



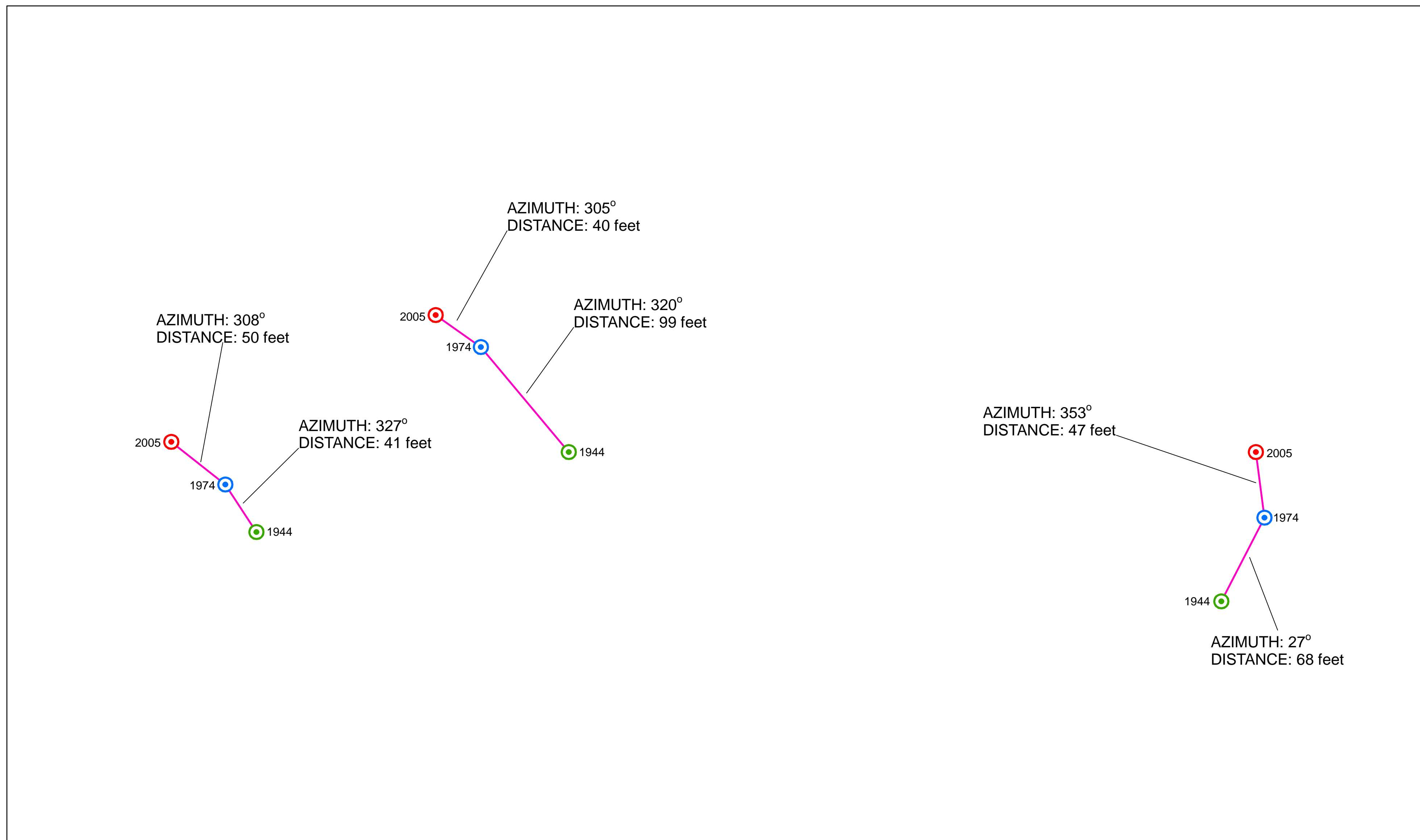
1974 AERIAL PHOTOGRAPH

1:1,200  
1 INCH = 100 FEET

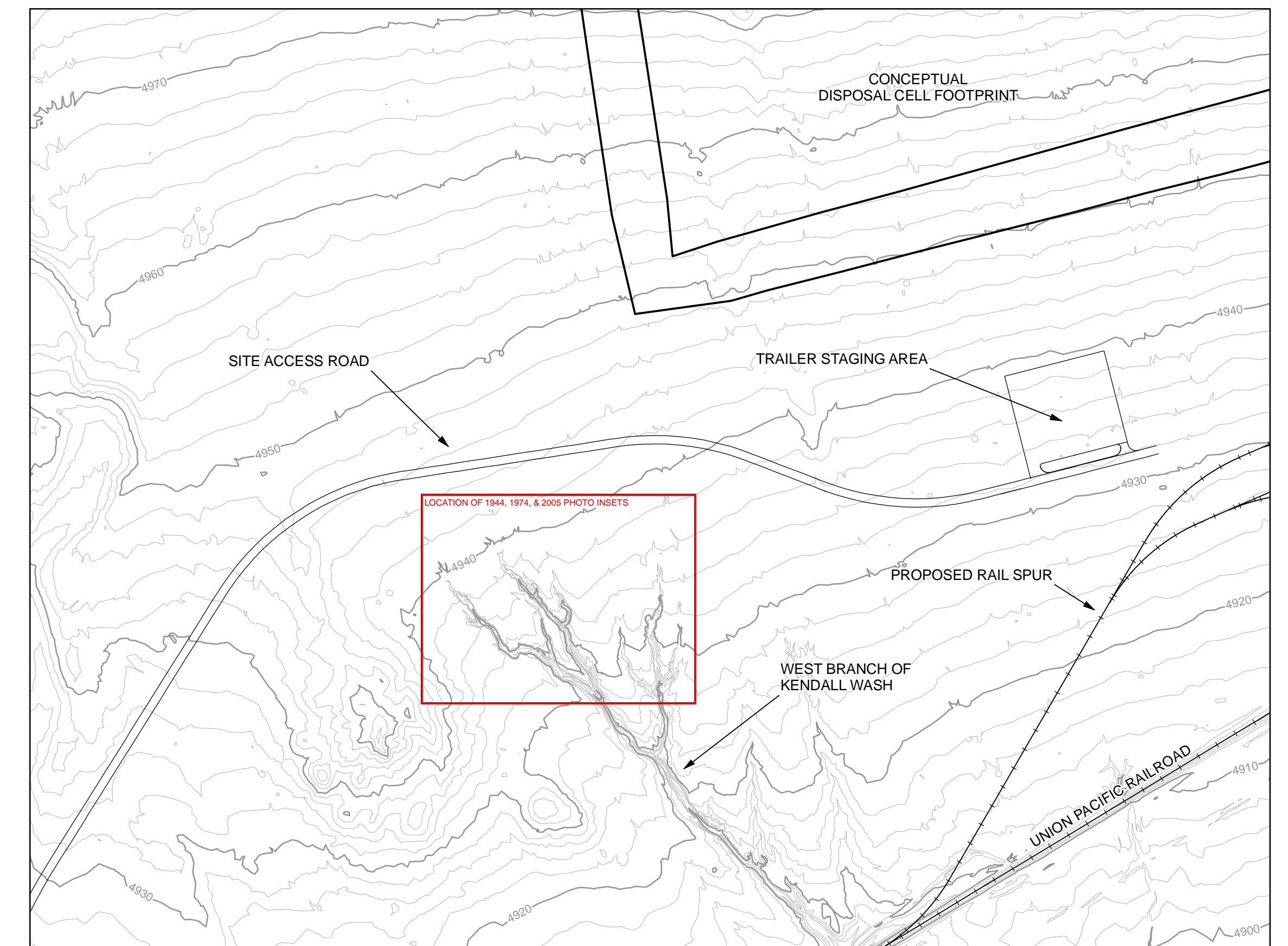


2005 AERIAL PHOTOGRAPH

1:1,200  
1 INCH = 100 FEET



1:600  
1 INCH = 50 FEET



1:4,800  
1 INCH = 400 FEET

EXPLANATION	
<span style="color: green;">●</span>	1944 Head of Erosion Incision (approximate)
<span style="color: blue;">●</span>	1974 Head of Erosion Incision (approximate)
<span style="color: red;">●</span>	2005 Head of Erosion Incision (approximate)
Note: All are plotted on the 2005 Aerial Photograph	

## PLATE 2

N	U.S. DEPARTMENT OF ENERGY GRAND JUNCTION, COLORADO	Work Performed by <b>S.M. Stoller Corporation</b> Under DOE Contract No. DE-AC01-02GJ79491
	<b>Head of Erosion Incision from 1944 to 2005 at West Branch of Kendall Wash, Crescent Junction, Utah, Site</b>	
DATE PREPARED: March 29, 2007	FILENAME: X0211800	