

**RECEIVED**

By Docket Room at 11:22 am, Apr 01, 2022



Cheniere Energy, Inc.  
700 Milam Street, Suite 1900  
Houston, Texas 77002  
phone: 713.375.5000  
fax: 713.375.6000

April 1, 2022

Submitted Via DOE's Online Portal

U. S. Department of Energy  
Office of Fossil Energy - Natural Gas Regulatory Activities  
P.O. Box 44375  
Washington, DC 20026-4375

Re: Sabine Pass Liquefaction, LLC  
DOE Semi-Annual Report for Period of September 1, 2021, through February 28, 2022  
FE Docket Nos. / Orders:  
10-85-LNG / 2833  
10-111-LNG / 2961\*  
13-30-LNG, 13-42-LNG, and 13-121-LNG /3306\*, 3307\*, 3384\* & 3669\*  
14-92-LNG / 3595  
15-63-LNG / 3792  
19-125-LNG / 4520 & 4800

Pursuant to the above-referenced Orders, Sabine Pass Liquefaction, LLC ("Sabine Pass"), herein submits its semi-annual report for September 1, 2021, through February 28, 2022. This report includes information on the construction progress of the Sabine Pass Liquefaction facility, and the status of the long-term contracts associated with the long-term export of LNG and any long-term gas supply contracts.

- Included as **Attachment A** are the Monthly Reports for construction activities which were submitted to Federal Energy Regulatory Commission under Docket Number CP13-552-000 during the reporting period. On February 4, 2022, Sabine Pass accepted Care, Custody, and Control of Train 6 and the Stage 3 OSBL and placed the facilities in service. Attached are the final construction status reports for the construction of Liquefaction Train 6 at Cheniere's Sabine Pass LNG Liquefaction Project
- Sabine Pass entered the following long-term contract(s) during the period from September 1, 2021, through February 28, 2022:
  - On October 1, 2021, Cheniere Marketing, LLC ("CMLLC") entered into an agreement with ENN LNG (Singapore) Pte. Ltd for the long-term sale and export of liquefied natural gas from the Sabine Pass Terminal. On February 15, 2022 this agreement was amended and assigned from CMLLC to Sabine Pass.
  - On October 22, 2021, CMLLC entered into an agreement with Glencore Ltd for the long-term sale and export of liquefied natural gas from the Sabine Pass Terminal. On February 17, 2022 this agreement was amended and assigned from CMLLC to Sabine Pass.
  - On November 4, 2021, CMLLC entered into an agreement with Sinochem Group Co., Ltd for the long-term sale and export of liquefied natural gas from the Sabine Pass Terminal.

- Sabine Pass entered the following long-term gas supply contract(s) during the period from September 1, 2021 – February 28, 2022:
  - Two Transaction Confirmations entered into by Sabine Pass on December 16, 2021 2021 with EAP Ohio, LLC, both governed by that certain NAESB Base Contract for Sale and Purchase of Natural Gas dated March 12, 2019, for an aggregated annual contract quantity approximating 128,000,000 MMBtu.
  
- Sabine Pass provided notification of a change in counterparty during the period from September 1, 2021 – February 28, 2022:
  - Acquisition of Indigo Natural Resources LLC by Southwestern Energy Company (SEC), and the related subsequent assignment by SES to SWN Energy Services Company, LLC
  - Acquisition of GEP Haynesville LLC by Southwestern Energy Company (SEC), and the related subsequent assignment by SES to SWN Energy Services Company, LLC

Should you have any questions about the instant filing, please feel free to contact the undersigned at (713) 375-5000.

Respectfully,



Karri Mahmoud  
Sabine Pass Liquefaction, LLC

Sabine Pass Liquefaction, LLC  
DOE Semi-Annual Report for Period September 1, 2021, through February 28, 2022

## **ATTACHMENT A**

Sabine Pass Liquefaction Project  
Cameron Parish, Louisiana

Monthly Progress Report  
September 2021

## Table of Contents

|    |  |   |
|----|--|---|
| 1. | Executive Summary .....                          | 1 |
| 2. | Project Highlights .....                         | 1 |
| 3. | Environmental, Safety, and Health Progress ..... | 1 |
| 4. | Schedule .....                                   | 1 |
| 5. | Construction and Start up .....                  | 2 |
| 6. | Permitting and Environmental .....               | 2 |
| 7. | Progress Pictures .....                          | 3 |

## 1. Executive Summary

This report covers activities for the month of September 2021.

Bechtel continues to progress the project and is now at 97.1% complete against the plan of 96.7%. Currently, Engineering is 100% complete, Procurement is 100% complete, Subcontracts is 95.8% complete, and Construction is 92.9% complete.

## 2. Project Highlights

During the month of September, construction continued concrete and paving activities and further progressed the stormwater trench alongside the compressor area. Above ground pipe installation continued in the five (5) remaining WBS areas, with three (3) additional areas closing out by the end of September. In addition, construction completed air blows and pipe tie-ins at the cold boxes, and steel installation at the amine sump. Construction completed the mechanical run of the 1421 compressor and continues preparation to complete all compressor mechanical runs in October. Construction also continues with pipe insulation activities and completing systems for turnover to startup. This month also saw Feed Gas introduced into the warm end of Train 6.

## 3. Environmental, Safety, and Health Progress

During the reporting month, the following ES&H events occurred:

|               | Near Miss |      | First Aid |      | Recordable |     | Lost Time |     |
|---------------|-----------|------|-----------|------|------------|-----|-----------|-----|
|               | Month     | ITD  | Month     | ITD  | Month      | ITD | Month     | ITD |
| Bechtel       | 4         | 2861 | 9         | 3989 | 0          | 118 | 0         | 15  |
| Subcontractor | 1         | 133  | 1         | 250  | 0          | 9   | 0         | 1   |
| Total         | 5         | 2994 | 10        | 4239 | 0          | 127 | 0         | 16  |

## 4. Schedule

Bechtel continues to progress the project and is now at 97.1% complete against the plan of 96.7%. Currently, Engineering is 100% complete, Procurement is 100% complete, Subcontracts is 95.8% complete, and Construction is 92.9% complete.

## 5. Construction and Start up

| Activities by Area |   |  |
|--------------------|---|--|
| Area               | Activities in September   | Planned Work for October   |
| Train 6            | <ul style="list-style-type: none"> <li>Completed above ground pipe installations in the Cold Boxes and the Heavies Removal area</li> <li>Completed air blows and pipe tie-ins at Cold Boxes</li> <li>Performed the mechanical run for 1421 Compressor</li> <li>Completed structural steel installation in the Amine Sump</li> <li>Started Regen Gas Compressor on nitrogen</li> <li>Completed HP leak checks at Units 12 and 13</li> <li>Commenced hot circulation of Therminol 55</li> <li>Performed first fire of the Thermal Oxidizer</li> <li>Introduced Feed Gas to the warm end of Train 6</li> <li>Commenced area walks</li> </ul> | <ul style="list-style-type: none"> <li>Complete area paving at Train 6</li> <li>Complete structural steel activities in the Propane Refrigeration area</li> <li>Complete above ground pipe installations in the Compressor area and Propane Refrigeration area</li> <li>Complete pipe testing program on Train 6</li> <li>Complete construction of storm water trench along Compressor area</li> <li>Perform the mechanical runs for the 1411, 1611, and 1621 Compressors</li> <li>Start the 1511 and 1521 Compressors on nitrogen</li> <li>Complete commissioning of Unit 13 Dehydration System</li> <li>Complete Amine passivation activities</li> </ul> |

## 6. Permitting and Environmental

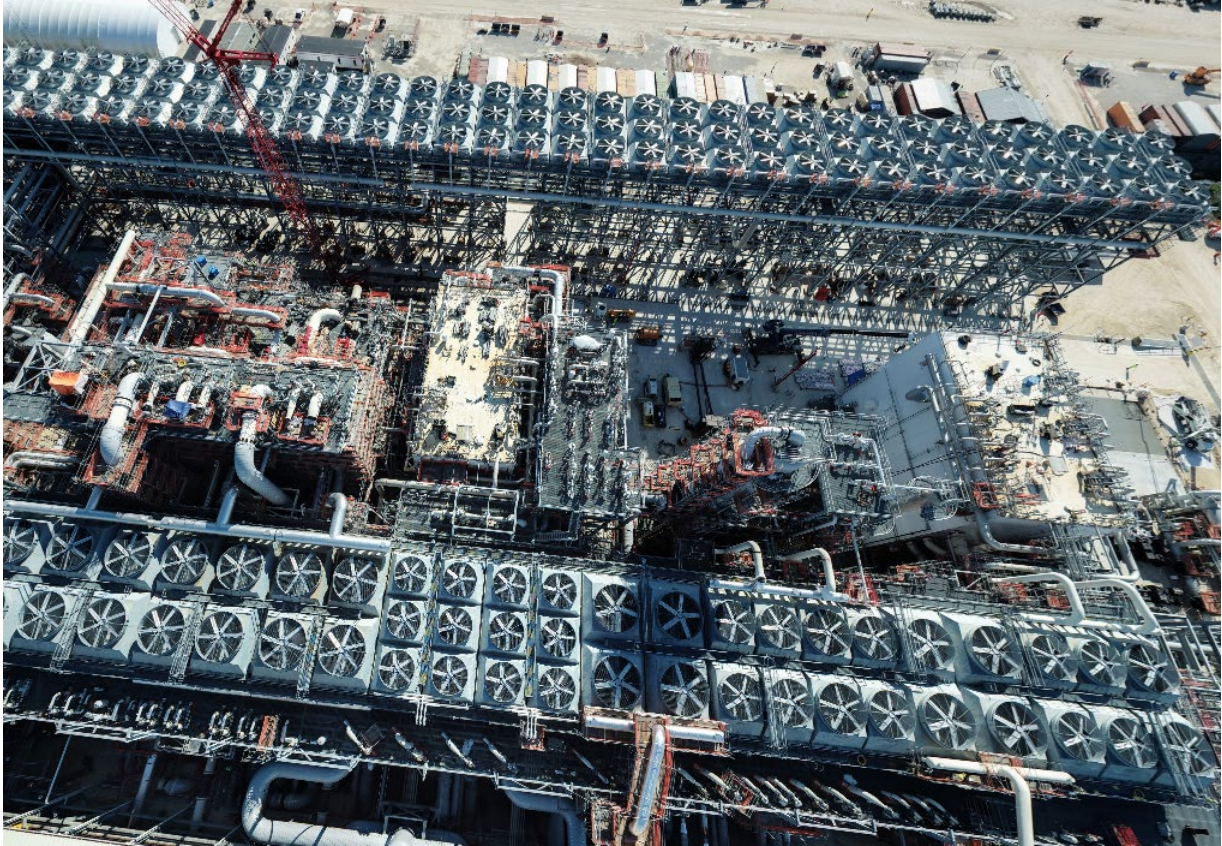
### Summary of Problems, Non-Compliances, and Corrective Actions

| Date  | Description |
|-------|-------------|
| None. |             |

### Agency Contacts/Inspections

| Agency | Name | Date | Location/Activity |
|--------|------|------|-------------------|
| None.  |      |      |                   |

**7. Progress Pictures**



Progress at Train 6



Sabine Pass Liquefaction Project  
Cameron Parish, Louisiana

Monthly Progress Report  
October 2021

## Table of Contents

|    |  |   |
|----|--|---|
| 1. | Executive Summary .....                          | 1 |
| 2. | Project Highlights .....                         | 1 |
| 3. | Environmental, Safety, and Health Progress ..... | 1 |
| 4. | Schedule .....                                   | 1 |
| 5. | Construction and Start up .....                  | 2 |
| 6. | Permitting and Environmental .....               | 2 |
| 7. | Progress Pictures .....                          | 3 |

## 1. Executive Summary

This report covers activities for the month of October 2021.

Bechtel continues to progress the project and is now at 98.6% complete against the plan of 98.1%. Currently, Engineering is 100% complete, Procurement is 100% complete, Subcontracts is 98.8% complete, and Construction is 96.2% complete.

## 2. Project Highlights

During the month of October, construction continued with paving activities and completion of the stormwater trench alongside the compressor area. Above ground pipe completed all remaining installations and made substantial progress on restoration. Construction completed the mechanical runs of the 1611 and 1621 compressors and continues preparation to complete the final compressor mechanical run for 1411. Construction also continues with pipe insulation activities and completing systems for turnover to startup.

## 3. Environmental, Safety, and Health Progress

During the reporting month, the following ES&H events occurred:

|               | Near Miss |      | First Aid |      | Recordable |     | Lost Time |     |
|---------------|-----------|------|-----------|------|------------|-----|-----------|-----|
|               | Month     | ITD  | Month     | ITD  | Month      | ITD | Month     | ITD |
| Bechtel       | 3         | 2864 | 12        | 4001 | 0          | 118 | 0         | 15  |
| Subcontractor | 1         | 134  | 1         | 251  | 0          | 9   | 0         | 1   |
| Total         | 4         | 2998 | 13        | 4252 | 0          | 127 | 0         | 16  |

## 4. Schedule

Bechtel continues to progress the project and is now at 98.6% complete against the plan of 98.1%. Currently, Engineering is 100% complete, Procurement is 100% complete, Subcontracts is 98.8% complete, and Construction is 96.2% complete.

## 5. Construction and Start up

| Activities by Area |  |  |
|--------------------|--|--|
| Area               | Activities in October  | Planned Work for November  |
| Train 6            | <ul style="list-style-type: none"> <li>Completed above ground pipe installations in the Compressor area and the Propane Refrigeration area</li> <li>Completed the pipe testing program</li> <li>Completed construction of storm water trench along Compressor area</li> <li>Completed ditch work between Trains 5 and 6</li> <li>Performed the mechanical runs for the 1611 and 1621 Compressors</li> <li>Started the 1511 and 1521 Compressors on nitrogen</li> <li>Commenced relocation efforts for the Medical Complex, LOTO, IR and Timekeeping trailers</li> <li>Completed commissioning of Unit 13 Dehydration System</li> <li>Completed Amine passivation activities</li> </ul> | <ul style="list-style-type: none"> <li>Commence area paving</li> <li>Complete structural steel activities at the Turbine enclosures in the Compressor area</li> <li>Complete pulling of Power &amp; Instrumentation Cable</li> <li>Complete pipe restoration activities</li> <li>Complete pipe insulation activities in support of Cooldown</li> <li>Perform the mechanical run for the 1411 Compressor</li> <li>Complete relocation efforts for the Medical Complex, LOTO, IR and Timekeeping trailers</li> <li>Commence dryout and defrost activities</li> <li>Commence inventorizing of refrigerants</li> </ul> |

## 6. Permitting and Environmental

### Summary of Problems, Non-Compliances, and Corrective Actions

| Date  | Description |
|-------|-------------|
| None. |             |

### Agency Contacts/Inspections

| Agency | Name | Date | Location/Activity |
|--------|------|------|-------------------|
| None.  |      |      |                   |

**7. Progress Pictures**



Progress at Train 6

Sabine Pass Liquefaction Project  
Cameron Parish, Louisiana

Monthly Progress Report  
November 2021

## Table of Contents

|    |  |   |
|----|--|---|
| 1. | Executive Summary .....                          | 1 |
| 2. | Project Highlights .....                         | 1 |
| 3. | Environmental, Safety, and Health Progress ..... | 1 |
| 4. | Schedule .....                                   | 1 |
| 5. | Construction and Start up .....                  | 2 |
| 6. | Permitting and Environmental .....               | 2 |
| 7. | Progress Pictures .....                          | 3 |

## 1. Executive Summary

This report covers activities for the month of November 2021.

Bechtel continues to progress the project and is now at 99.3% complete against the plan of 99.2%. Currently, Engineering is 100% complete, Procurement is 100% complete, Subcontracts is 99.2% complete, and Construction is 98.2% complete.

## 2. Project Highlights

During the month of November, construction continued with concrete paving activities and commenced asphalt paving operations. Above ground pipe restoration was completed in all remaining Train 6 locations with insulation progressing sufficiently to support commencement of the cooldown process. Construction completed the final compressor mechanical run for 1411 and started up all compressors in preparation for producing LNG.

## 3. Environmental, Safety, and Health Progress

During the reporting month, the following ES&H events occurred:

|               | Near Miss |      | First Aid |      | Recordable |     | Lost Time |     |
|---------------|-----------|------|-----------|------|------------|-----|-----------|-----|
|               | Month     | ITD  | Month     | ITD  | Month      | ITD | Month     | ITD |
| Bechtel       | 7         | 2871 | 5         | 4006 | 0          | 118 | 0         | 15  |
| Subcontractor | 1         | 135  | 1         | 252  | 0          | 9   | 0         | 1   |
| Total         | 8         | 3006 | 6         | 4258 | 0          | 127 | 0         | 16  |

## 4. Schedule

Bechtel continues to progress the project and is now at 99.3% complete against the plan of 99.2%. Currently, Engineering is 100% complete, Procurement is 100% complete, Subcontracts is 99.2% complete, and Construction is 98.2% complete.



## 5. Construction and Start up

| Activities by Area |  |   |
|--------------------|--|---|
| Area               | Activities in November   | Planned Work for December   |
| Train 6            | <ul style="list-style-type: none"> <li>Completed structural steel activities at the Turbine enclosures in the Compressor area</li> <li>Completed pulling of power &amp; instrumentation cable in Train 6</li> <li>Completed pipe restoration activities in Train 6</li> <li>Completed pipe insulation activities in support of cooldown</li> <li>Performed the mechanical run for the 1411 compressor</li> <li>Completed relocation efforts for the Medical Complex, LOTO, IR and Timekeeping trailers to areas outside of the Train 6 blast zone</li> <li>Commenced dryout and defrost activities</li> <li>Commenced inventoring of refrigerants</li> </ul> | <ul style="list-style-type: none"> <li>Complete cooldown and produce first LNG</li> <li>Complete concrete area paving at Train 6</li> <li>Complete all remaining miscellaneous steel activities in Train 6</li> <li>Complete pulling of Lighting Cable in the Train 6</li> <li>Perform emissions testing at Train 6</li> <li>Commence preparation activities for strainer outage</li> </ul> |

## 6. Permitting and Environmental

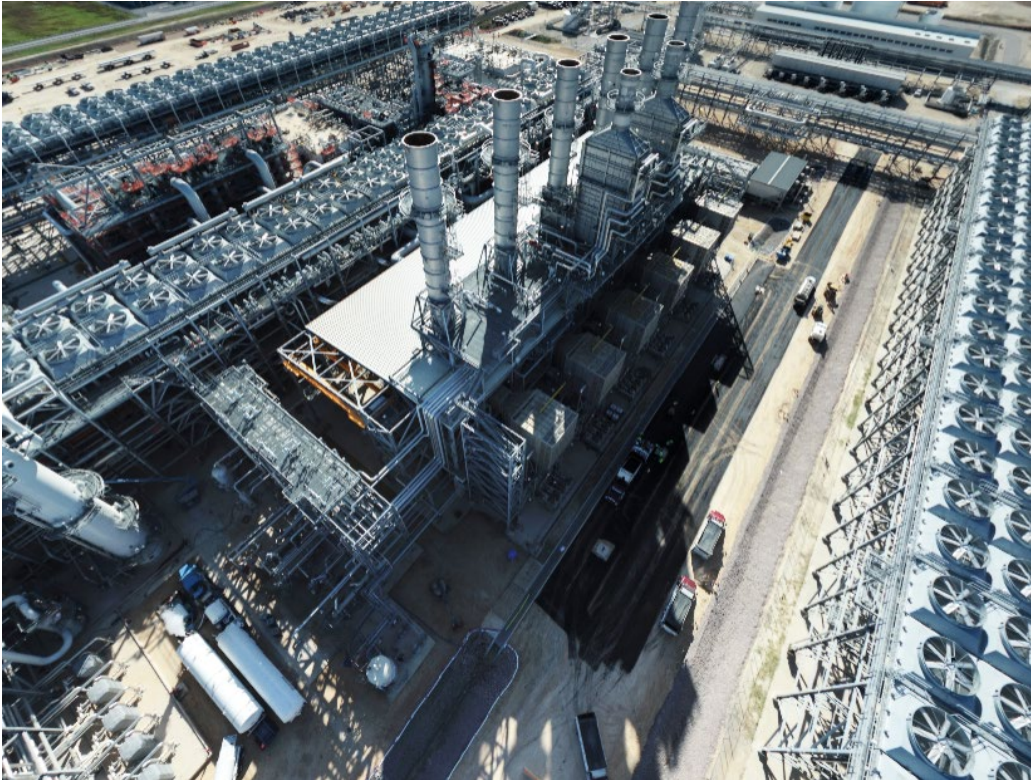
### Summary of Problems, Non-Compliances, and Corrective Actions

| Date  | Description |
|-------|-------------|
| None. |             |

### Agency Contacts/Inspections

| Agency | Name | Date | Location/Activity |
|--------|------|------|-------------------|
| None.  |      |      |                   |

**7. Progress Pictures**



Progress at Train 6

Sabine Pass Liquefaction Project  
Cameron Parish, Louisiana

Monthly Progress Report  
December 2021

## Table of Contents

|    |  |   |
|----|--|---|
| 1. | Executive Summary .....                          | 1 |
| 2. | Project Highlights .....                         | 1 |
| 3. | Environmental, Safety, and Health Progress ..... | 1 |
| 4. | Schedule .....                                   | 1 |
| 5. | Construction and Start up .....                  | 2 |
| 6. | Permitting and Environmental .....               | 2 |
| 7. | Progress Pictures .....                          | 3 |

## 1. Executive Summary

This report covers activities for the month of December 2021.

Bechtel continues to progress the project and is now at 99.5% complete against the plan of 99.8%. Currently, Engineering is 100% complete, Procurement is 100% complete, Subcontracts is 99.6% complete, and Construction is 98.8% complete.

## 2. Project Highlights

During the month of December, construction completed concrete paving activities and continued asphalt paving operations. Startup completed all commissioning activities to support the production of LNG and achievement of First Cargo, while preparing for the strainer outage and performance testing efforts planned for January.

## 3. Environmental, Safety, and Health Progress

During the reporting month, the following ES&H events occurred:

|               | Near Miss |      | First Aid |      | Recordable |     | Lost Time |     |
|---------------|-----------|------|-----------|------|------------|-----|-----------|-----|
|               | Month     | ITD  | Month     | ITD  | Month      | ITD | Month     | ITD |
| Bechtel       | 4         | 2875 | 3         | 4009 | 0          | 118 | 0         | 15  |
| Subcontractor | 0         | 135  | 0         | 252  | 0          | 9   | 0         | 1   |
| Total         | 4         | 3010 | 3         | 4261 | 0          | 127 | 0         | 16  |

## 4. Schedule

Bechtel continues to progress the project and is now at 99.5% complete against the plan of 99.8%. Currently, Engineering is 100% complete, Procurement is 100% complete, Subcontracts is 99.6% complete, and Construction is 98.8% complete.

## 5. Construction and Start up

| Activities by Area |   |   |
|--------------------|---|---|
| Area               | Activities in December  | Planned Work for January  |
| Train 6            | <ul style="list-style-type: none"> <li>• Completed concrete area paving at Train 6</li> <li>• Completed all remaining miscellaneous steel activities in Train 6</li> <li>• Completed cooldown process and produced first LNG</li> <li>• Performed emissions testing at Train 6</li> <li>• Commenced preparation activities for strainer outage</li> </ul> | <ul style="list-style-type: none"> <li>• Complete all lighting in Train 6</li> <li>• Perform strainer outage</li> <li>• Complete remaining pipe insulation activities</li> <li>• Complete all remaining area walkdowns and punchlist identification</li> <li>• Commence performance test</li> </ul> |

## 6. Permitting and Environmental

### Summary of Problems, Non-Compliances, and Corrective Actions

| Date  | Description |
|-------|-------------|
| None. |             |

### Agency Contacts/Inspections

| Agency | Name | Date | Location/Activity |
|--------|------|------|-------------------|
| None.  |      |      |                   |

**7. Progress Pictures**



Asphalt in progress at South side of Train 6

Sabine Pass Liquefaction Project  
Cameron Parish, Louisiana

Monthly Progress Report  
January 2022



## Table of Contents

|    |  |   |
|----|--|---|
| 1. | Executive Summary .....                          | 1 |
| 2. | Project Highlights .....                         | 1 |
| 3. | Environmental, Safety, and Health Progress ..... | 1 |
| 4. | Schedule .....                                   | 1 |
| 5. | Construction and Start up .....                  | 2 |
| 6. | Permitting and Environmental .....               | 2 |
| 7. | Progress Pictures .....                          | 3 |

## 1. Executive Summary

This report covers activities for the month of January 2022.

Bechtel continues to progress the project and is now at 99.8% complete against the plan of 100%. Currently, Engineering is 100% complete, Procurement is 100% complete, Subcontracts is 99.9% complete, and Construction is 99.6% complete.

## 2. Project Highlights

During the month of January, construction completed asphalt paving operations and continued insulation and punch closeout activities. Startup completed the strainer outage, performance test and all remaining Commissioning Demonstration Tests.

## 3. Environmental, Safety, and Health Progress

During the reporting month, the following ES&H events occurred:

|               | Near Miss |      | First Aid |      | Recordable |     | Lost Time |     |
|---------------|-----------|------|-----------|------|------------|-----|-----------|-----|
|               | Month     | ITD  | Month     | ITD  | Month      | ITD | Month     | ITD |
| Bechtel       | 1         | 2876 | 3         | 4012 | 0          | 118 | 0         | 15  |
| Subcontractor | 0         | 135  | 0         | 252  | 0          | 9   | 0         | 1   |
| Total         | 1         | 3011 | 3         | 4264 | 0          | 127 | 0         | 16  |

## 4. Schedule

Bechtel continues to progress the project and is now at 99.8% complete against the plan of 100%. Currently, Engineering is 100% complete, Procurement is 100% complete, Subcontracts is 99.9% complete, and Construction is 99.6% complete.

## 5. Construction and Start up

| Activities by Area |  |  |
|--------------------|--|--|
| Area               | Activities in January  | Planned Work for February  |
| Train 6            | <ul style="list-style-type: none"> <li>• Completed bolt tensioning and pipe machining works</li> <li>• Completed road asphaltting works</li> <li>• Continued mobilization of supplier technicians to support construction and commissioning activities</li> <li>• Continued subcontract closeout activities for Train 6</li> </ul> | <ul style="list-style-type: none"> <li>• Complete mobilization of supplier technicians to support the commissioning and start-up activities for Train 6</li> <li>• Continue subcontract closeout activities</li> </ul> |

## 6. Permitting and Environmental

### Summary of Problems, Non-Compliances, and Corrective Actions

| Date  | Description |
|-------|-------------|
| None. |             |

### Agency Contacts/Inspections

| Agency | Name | Date | Location/Activity |
|--------|------|------|-------------------|
| None.  |      |      |                   |

**7. Progress Pictures**



Asphalt complete at North side of Train 6

Sabine Pass Liquefaction Project  
Cameron Parish, Louisiana

Monthly Progress Report  
February 2022

## Table of Contents

|    |  |   |
|----|--|---|
| 1. | Executive Summary .....                          | 1 |
| 2. | Project Highlights .....                         | 1 |
| 3. | Environmental, Safety, and Health Progress ..... | 1 |
| 4. | Schedule .....                                   | 1 |
| 5. | Construction and Start up .....                  | 2 |
| 6. | Permitting and Environmental .....               | 2 |
| 7. | Progress Pictures .....                          | 3 |

## 1. Executive Summary

This report covers activities for the month of February 2022.

Bechtel is now at 100% complete against the plan of 100%. Currently, Engineering is 100% complete, Procurement is 100% complete, Subcontracts is 100% complete, and Construction is 100% complete. Sabine Pass accepted Care, Custody, and Control of Train 6 and the Stage 3 OSBL and placed the facilities in service on February 4, 2022.

## 2. Project Highlights

During the month of February, substantial completion was achieved and Sabine Pass accepted Care, Custody, and Control of Train 6 and the Stage 3 OSBL facilities on February 4, 2022. All restoration activities have been completed.

## 3. Environmental, Safety, and Health Progress

During the reporting month, the following ES&H events occurred:

|               | Near Miss |      | First Aid |      | Recordable |     | Lost Time |     |
|---------------|-----------|------|-----------|------|------------|-----|-----------|-----|
|               | Month     | ITD  | Month     | ITD  | Month      | ITD | Month     | ITD |
| Bechtel       | 3         | 2879 | 0         | 4012 | 0          | 118 | 0         | 15  |
| Subcontractor | 0         | 135  | 0         | 252  | 0          | 9   | 0         | 1   |
| Total         | 3         | 3014 | 0         | 4264 | 0          | 127 | 0         | 16  |

## 4. Schedule

Bechtel is now at 100% complete against the plan of 100%. Currently, Engineering is 100% complete, Procurement is 100% complete, Subcontracts is 100% complete, and Construction is 100% complete. Sabine Pass accepted Care, Custody, and Control of Train 6 and the Stage 3 OSBL and placed the facilities in service on February 4, 2022.

## 5. Construction and Start up

| Activities by Area |   |  |
|--------------------|---|--|
| Area               | Activities in February  | Planned Work for March                                 |
| Train 6            | <ul style="list-style-type: none"> <li>Completed remaining punch items</li> <li>Reached substantial completion</li> </ul> | <ul style="list-style-type: none"> <li>None</li> </ul> |

## 6. Permitting and Environmental

### Summary of Problems, Non-Compliances, and Corrective Actions

| Date  | Description |
|-------|-------------|
| None. |             |

### Agency Contacts/Inspections

| Agency | Name | Date | Location/Activity |
|--------|------|------|-------------------|
| None.  |      |      |                   |



**7. Progress Pictures**



Train 6 and OSBL Substantial Completion