



# Soil-Water-Plant Nexus: Controlling the Fate of Carbon Sequestration through Microbiome Engineering

Marie Kroeger, PhD

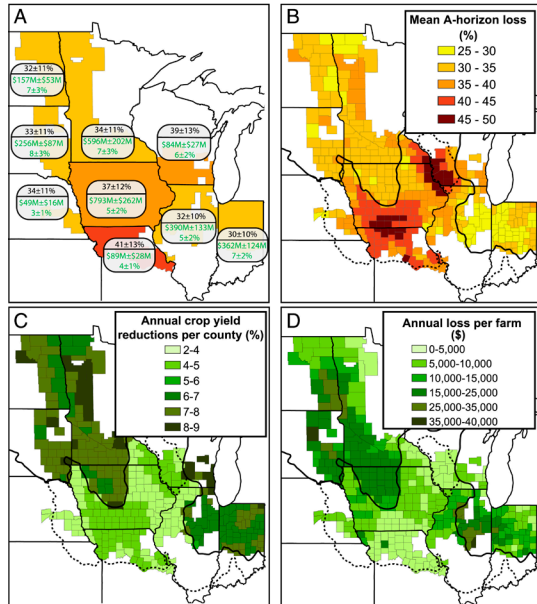
Scientist

Bioenergy and Biome Sciences

April 5, 2022

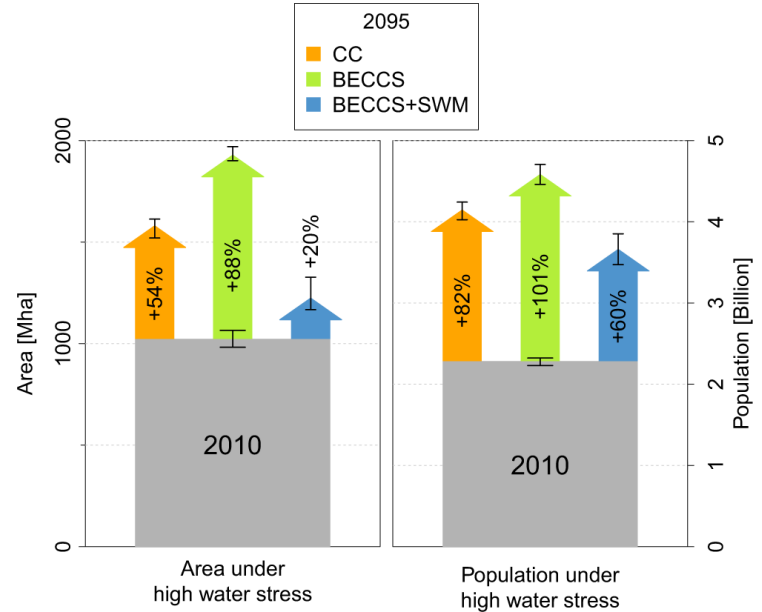
LA-UR-22-22207

# Soil Erosion Driving Carbon Loss and Land Use Change



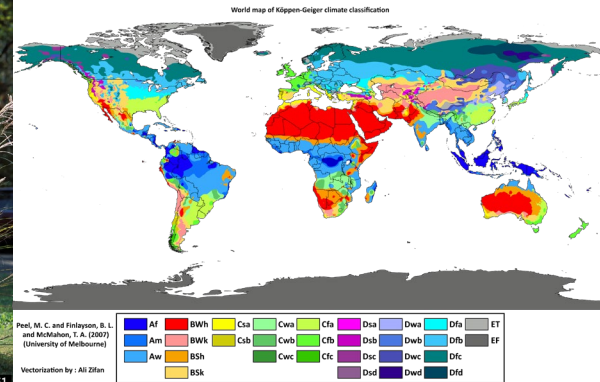
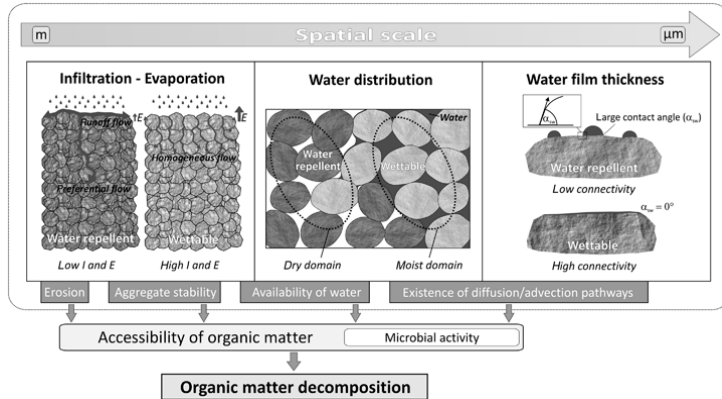
Thaler et al. 2021. *PNAS*

# Water Stress is Increasing



Stenzel et al. 2021. *Nat. Comms*

# Soil Water Repellency – a Wrench in Carbon Sequestration and Water Use Efficiency Under Bioenergy Crops



Goebel et al. 2011. *Glob Chang Biol*

Vegetation Type

Climate and Soil Texture

# Microbiome Control of Soil-Water-Plant Interactions

