



# Idaho CERCLA Disposal Facility Additional Cell Preliminary Planning

---

Nicole Badrov

CERCLA Project Manager  
Soil and Groundwater Remediation

January 28, 2021



**EM** *Environmental Management*

safety ❖ performance ❖ cleanup ❖ closure

Idaho Cleanup Project

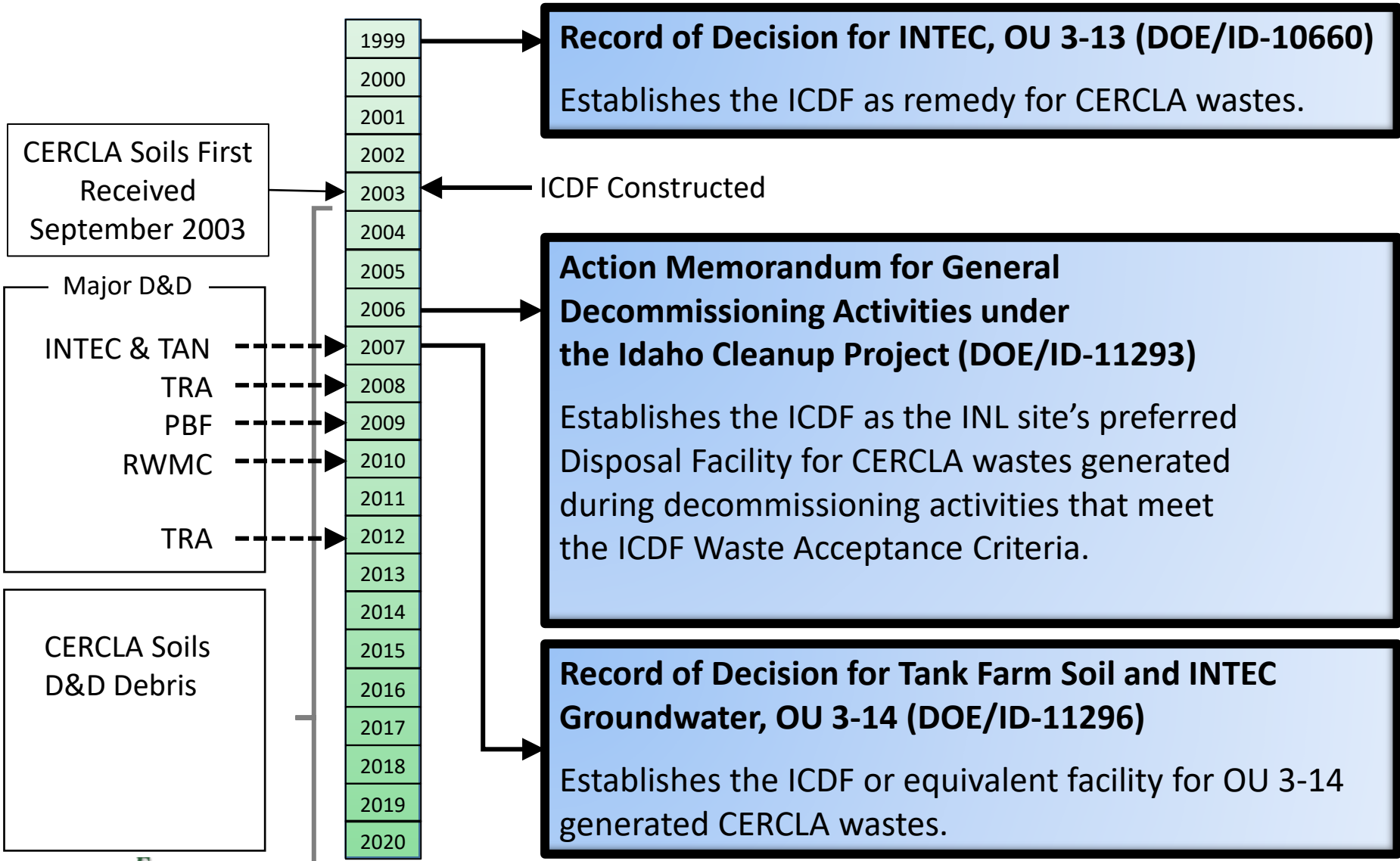
# What We'll Cover

---

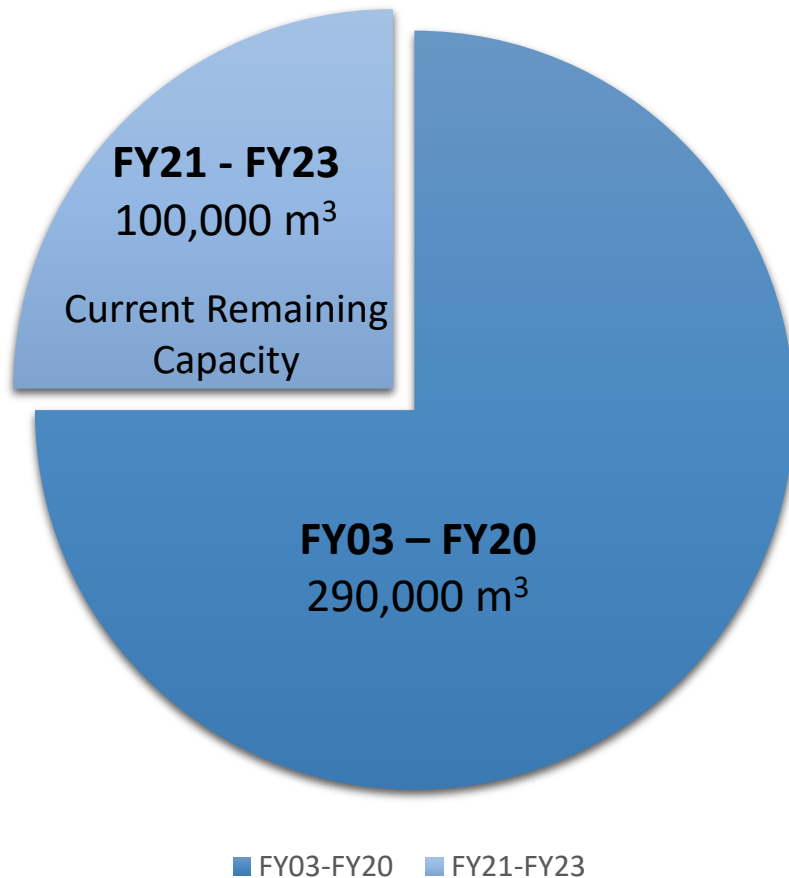
- ICDF purpose and decision documents
- Existing capacity and projected waste volumes
- Additional cell design
- Preferred location
- Anticipated schedule



# ICDF Purpose and Decision Documents



# ICDF CERCLA Waste Projection and Cost



**Existing ICDF Landfill Volume**

## Existing ICDF Landfill (end of FY2020)

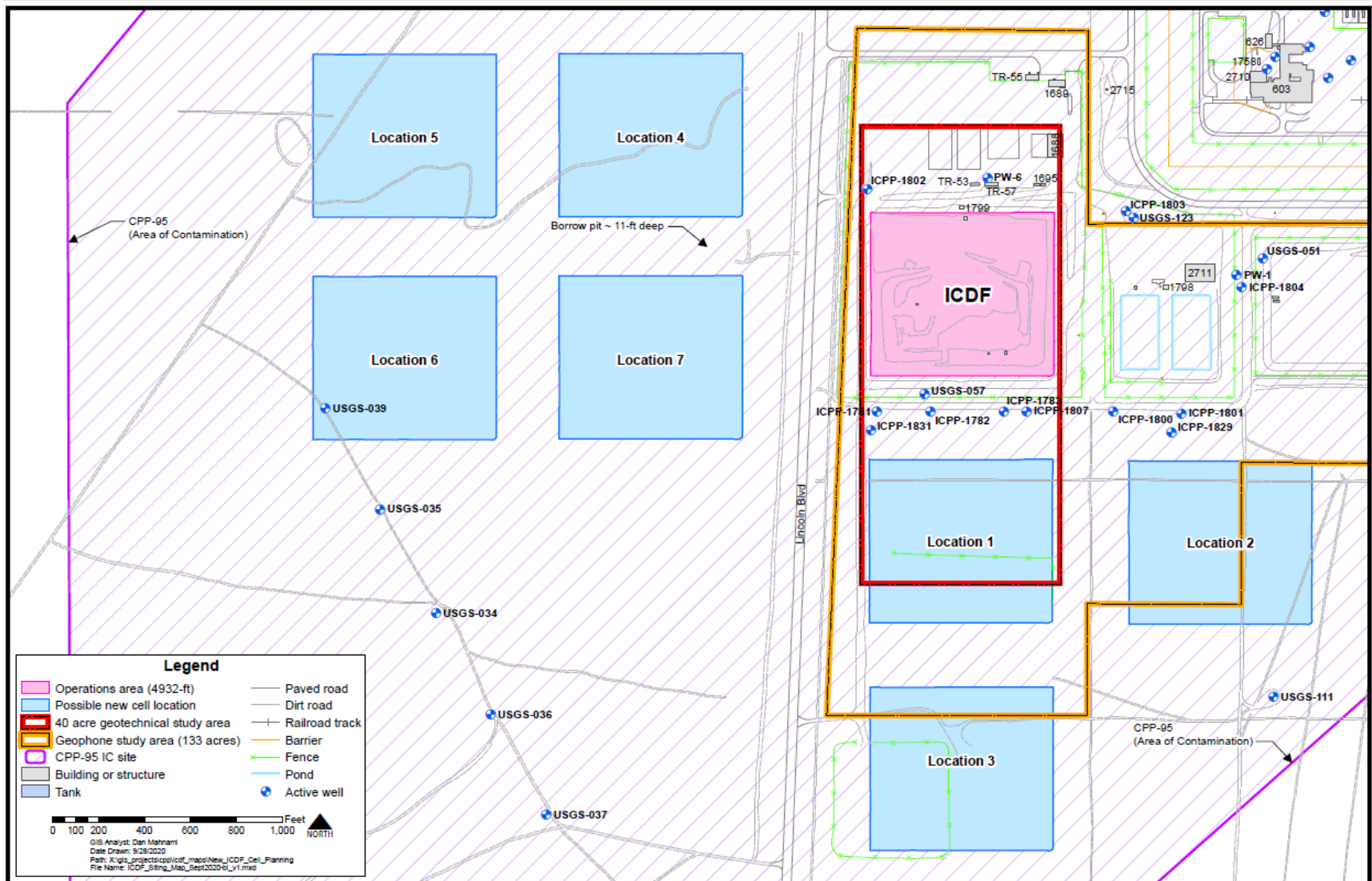
- Capacity 390,000 m<sup>3</sup>
  - ~75% Full
  - ~100,000 m<sup>3</sup> remaining capacity
- More soils than debris

## CERCLA Waste Projections (2020-2050)

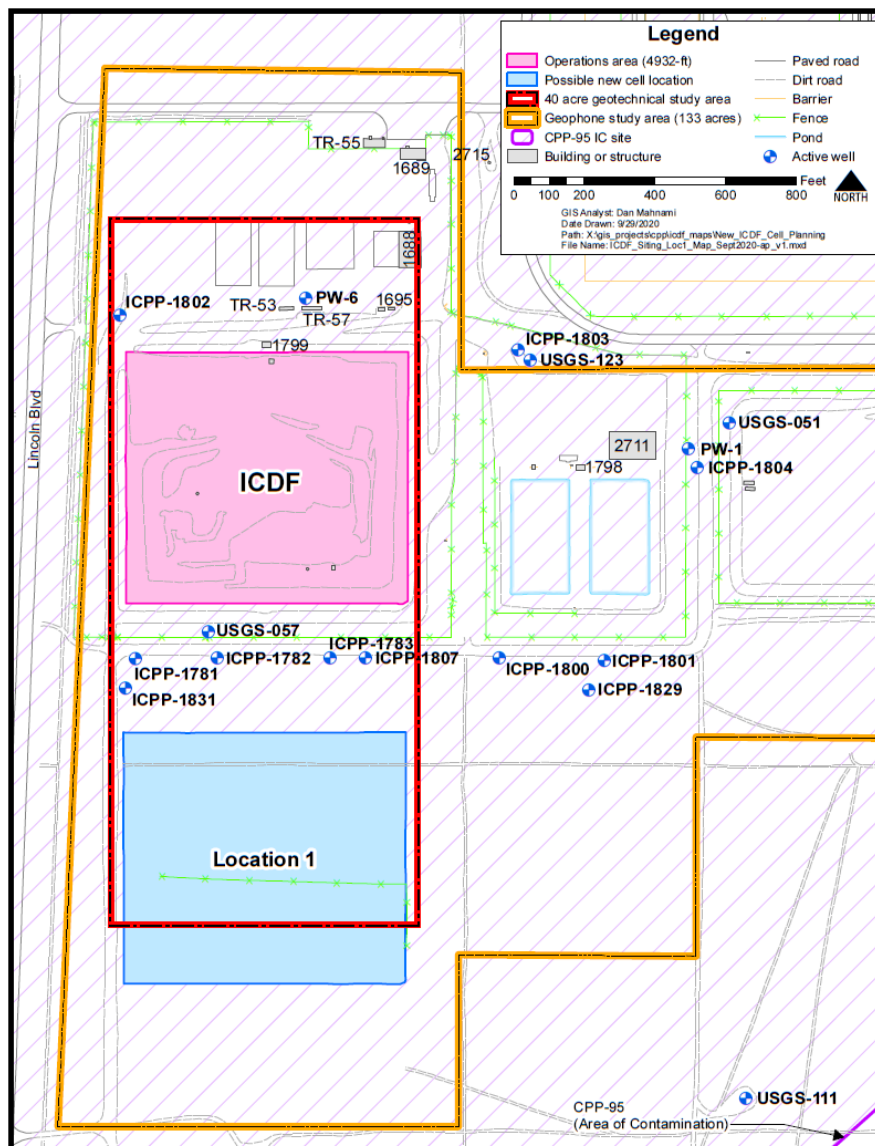
- 340,000 m<sup>3</sup> total disposal capacity needed
  - 100,000 m<sup>3</sup> FY20-FY23 into existing cell
  - 240,000 m<sup>3</sup> additional capacity needed to meet projected demand FY24-FY50
- More debris than soils



## ICDF Existing and Proposed Locations



# Preferred Location



**EM Environmental Management**

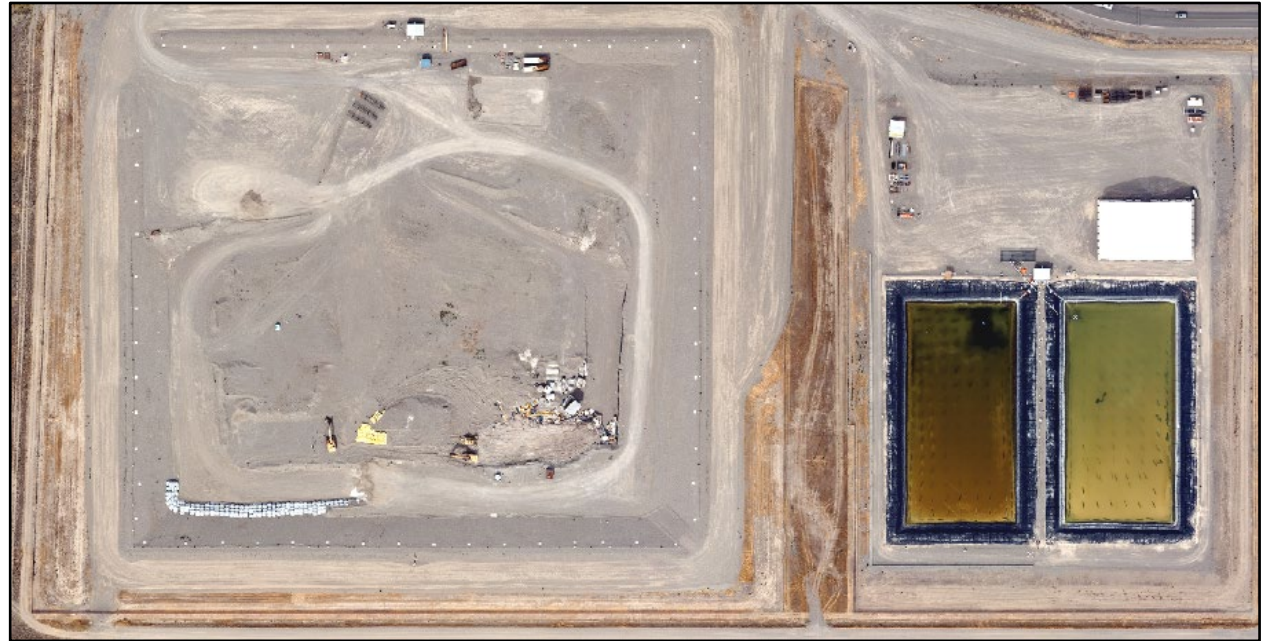
safety ❖ performance ❖ cleanup ❖ closure

**Idaho Cleanup Project**



# Additional Cell Conceptual Design

- Will meet all requirements of the existing ICDF Landfill
  - 40 CFR 264
  - IDAPA (Idaho Administrative Procedures Act)
  - DOE M 435.1
  - CERCLA ROD
  - ARARs (Applicable Relevant and Appropriate Requirements)
- Includes
  - Landfill
  - Evaporation ponds
  - Support buildings
  - Monitoring
- Design/Engineering
  - Landfill based on existing landfill design/size
  - Evaporation ponds to include slightly larger capacity



# Path Forward

- Cost estimate preparation

- Preliminary work will be estimated as part of the existing ICP contract
  - Preparation of an Explanation of Significant Difference
  - Preparation of a Field Sampling Plan for Geotechnical Studies
- Additional follow-on siting and cell construction work will be estimated as part of the next ICP contract

- Anticipated Timeline

- The Explanation of Significant Differences will be completed FY21
- Cost and schedule for follow-on design, siting and construction will be developed next contract period





# Questions?



**EM** *Environmental Management*

safety ❖ performance ❖ cleanup ❖ closure

**Idaho Cleanup Project**