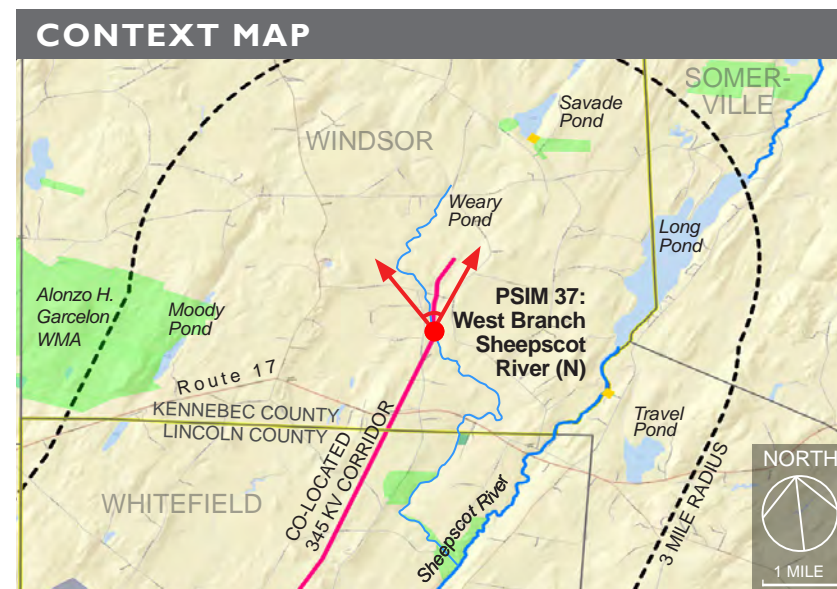




Photosimulation 37: Panoramic view looking northwest to northeast from the West Branch Sheepscot River in Windsor toward the proposed co-located 345 kV transmission line (this view is a continuation of Photosimulation 36). Five proposed 345 kV structures and conductors will be visible at distances of 500 to 2,300 feet from this viewpoint. Riparian corridor vegetation will be enhanced with new plantings to contribute to stream bank stability, biofiltration, and visual mitigation.



TECHNICAL INFORMATION	
Typical Cross Section	Photograph / Photosimulation Information
	Location: 44.282987°, -69.56534°
	Viewing Direction: Northwest to Northeast
	Horizontal Angle of View: 61°
	Date and Time: 04/24/18 at 5:26 pm
	Camera Focal Length: 35 mm
	Camera Make/Model: Nikon D5500
	Photo Source: TJD&A
	Proposed Structures Visible: 3
	Approximate Distance to Nearest Visible Structure: 500 feet



Photosimulation 37A: Normal view looking north from the Sheepscot River in Windsor toward the proposed co-located 345 kV transmission line. Five proposed 345 kV structures and conductors will be visible at distances of 500 to 2,300 feet from this viewpoint. Riparian corridor vegetation will be enhanced with new plantings to contribute to stream bank stability, biofiltration, and visual mitigation.

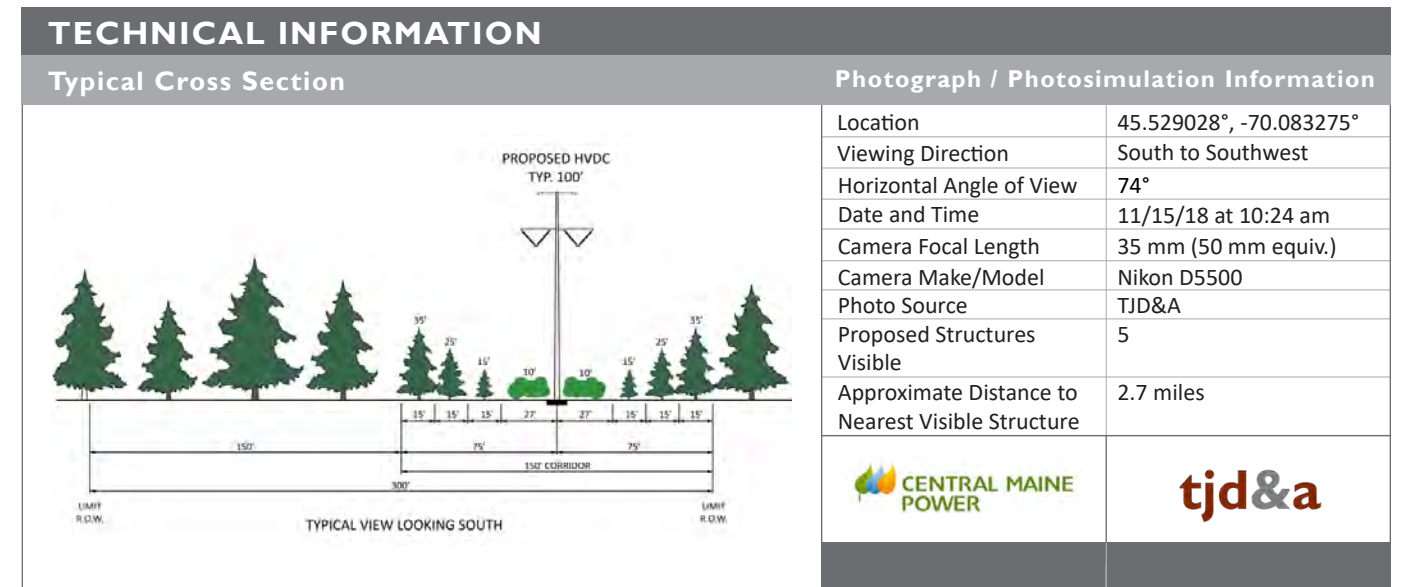
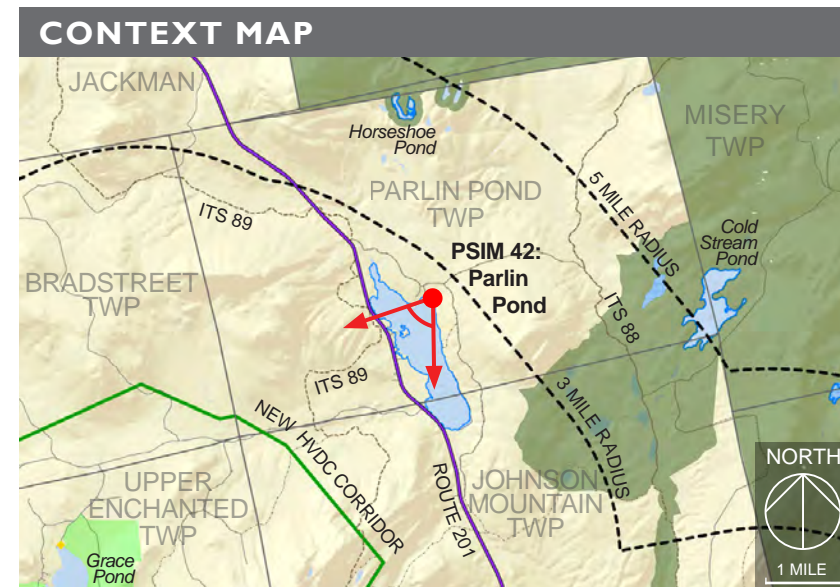


Photosimulation 37D: Normal view looking north from the Sheepscot River in Windsor toward the proposed co-located 345 kV transmission line. Five proposed 345 kV structures and conductors will be visible at distances of 500 to 2,300 feet from this viewpoint. Riparian corridor vegetation will be enhanced with new plantings to contribute to stream bank stability, biofiltration, and visual mitigation.

PHOTOSIMULATION 42: PARLIN POND, Parlin Pond Twp



Photosimulation 42: Panoramic view looking south to southwest from the northern end of Parlin Pond in Parlin Pond Twp toward the proposed HVDC transmission line. Five proposed HVDC structures, conductors, and portions of the tapered vegetation corridor will be visible crossing the east shoulder of Coburn Mountain within 3 miles of this viewpoint. Portions of the tapered vegetation corridor will be slightly more visible in leaf-off conditions. The weathered steel HVDC structures will generally blend in with the wooded hillside. The conductors will be most visible in early morning light. Non-specular conductors will be used to minimize glare.



PHOTOSIMULATION 42A: PARLIN POND, Parlin Pond Twp

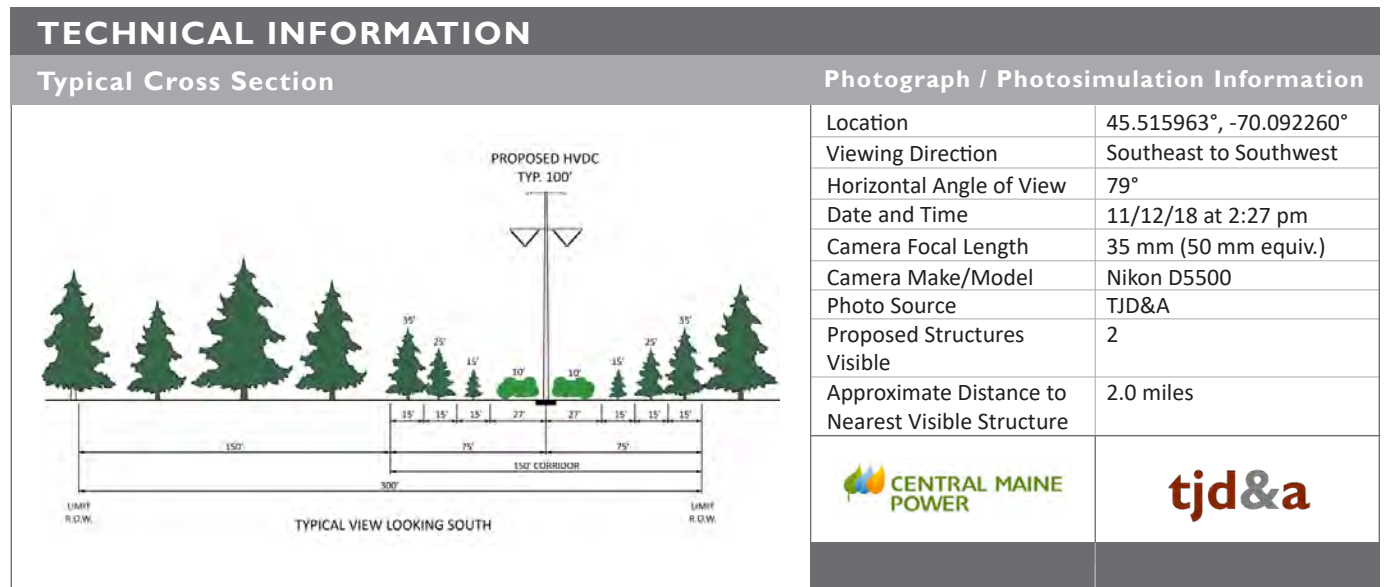
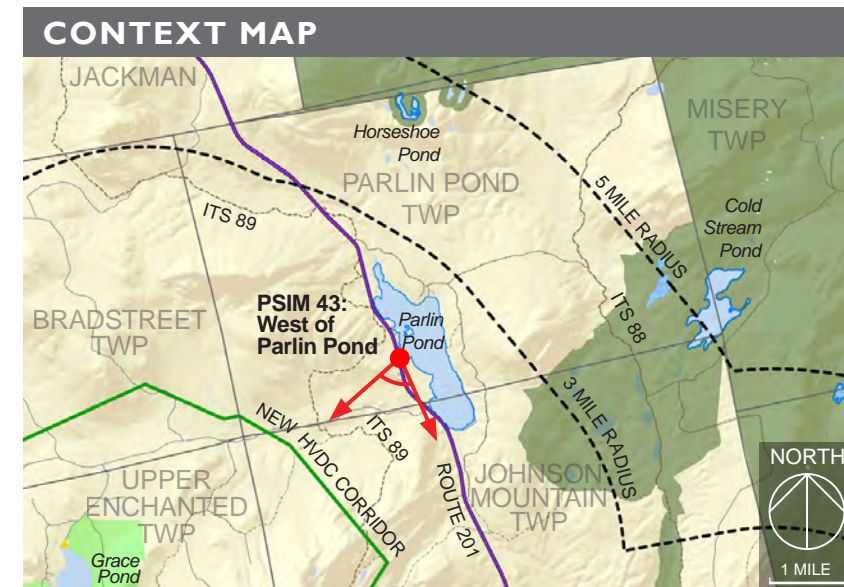


Photosimulation 42A: Normal view looking south from Parlin Pond toward the proposed HVDC transmission line. Five proposed HVDC structures, conductors, and portions of the tapered vegetation corridor will be visible crossing the shoulder of Coburn Mountain within 3 miles of this viewpoint.

PHOTOSIMULATION 43: ROUTE 201, WEST OF PARLIN POND, Parlin Pond Twp



Photosimulation 43: Panoramic view looking southeast to southwest from Route 201 (west of Parlin Pond) in Parlin Pond Twp toward the proposed HVDC transmission line crossing the eastern shoulder of Coburn Mountain. This viewpoint along Route 201 represents the location with the highest degree of potential visibility adjacent to the open fields on the west side of Route 201. Two proposed HVDC structures, conductors, and portions of the tapered vegetation corridor will be visible at distances of 2.0 to 2.1 miles from this viewpoint. One structure will be silhouetted against the sky and one will blend with the wooded hillside. The visible portion of corridor, which follows the profile of Coburn Mountain, will be more noticeable during leaf-off conditions. The conductors will be most noticeable in early morning light.



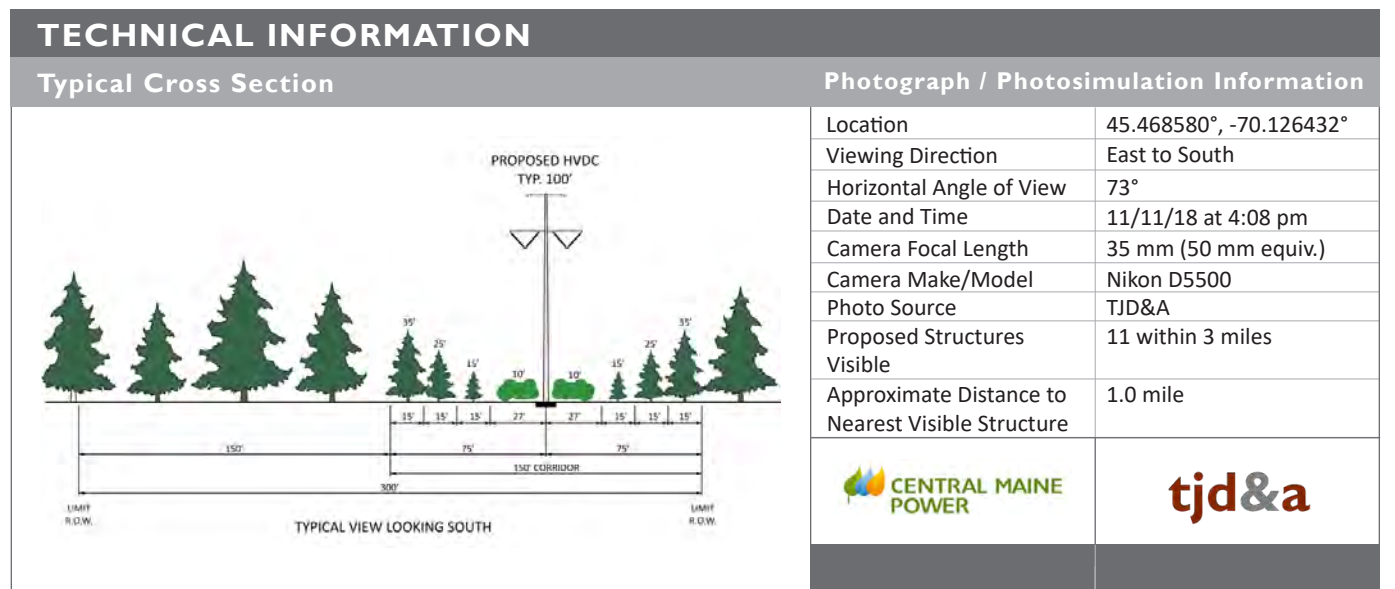
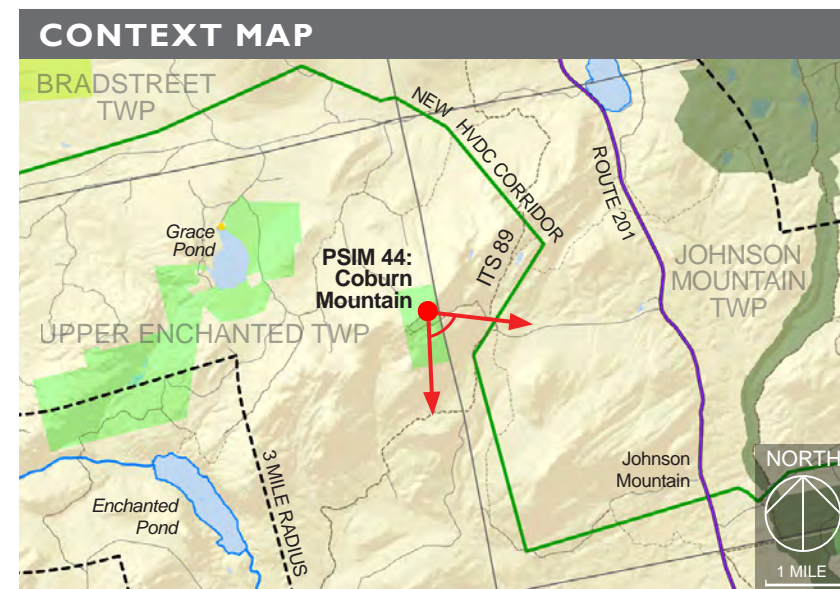
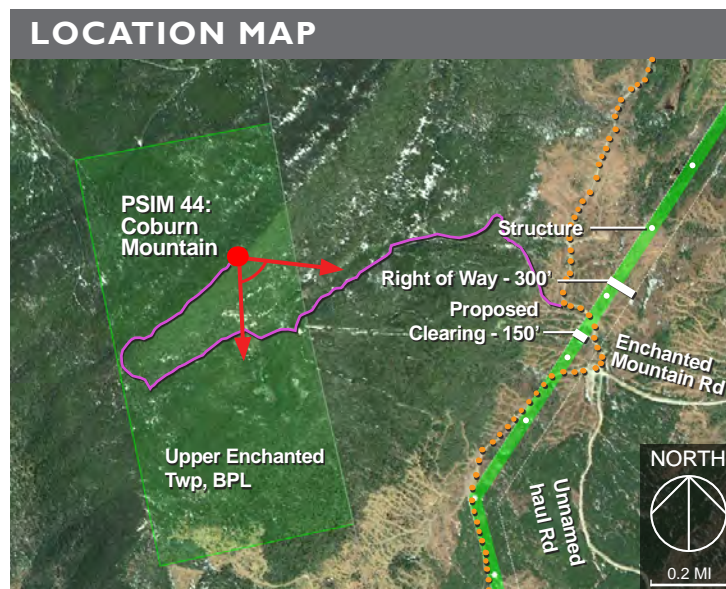


Photosimulation 43A: Normal view looking south from Route 201 in Parlin Pond Twp toward the proposed HVDC transmission line. Two proposed HVDC structures, conductors, and portions of the tapered vegetation corridor will be visible at distances of 2.0 to 2.1 miles from this viewpoint.

PHOTOSIMULATION 44: COBURN MOUNTAIN, OBSERVATION TOWER, Upper Enchanted Twp



Photosimulation 44: Panoramic view looking east to south from the observation tower at the summit of Coburn Mountain in Upper Enchanted Twp toward the proposed HVDC transmission line. The new 150 ft wide tapered vegetation corridor will be visible in the midground on the west side of Johnson Mountain and in the background to the southeast. The closest visible structure will be 1.0 miles from this viewpoint. A local snowmobile trail to the summit is accessed off ITS 89. During snow cover conditions, the most visible portion of the Project will be the tapered vegetation corridor from the summit. The corridor will be seen in context with the active timber harvesting areas and haul roads that are typical in a working forest.





Photosimulation 44A: Normal view looking east from the observation tower at the summit of Coburn Mountain toward the proposed HVDC transmission line. The proposed tapered vegetation corridor and HVDC transmission line structures will be minimally visible in the background, to the left of Johnson Mountain in the photograph.



Photosimulation 44B: Normal view looking south from the observation tower at the summit of Coburn Mountain toward the proposed HVDC transmission line. The new 150 ft wide tapered vegetation corridor will be visible in the midground on the west side of Johnson Mountain. The closest visible structure and conductors will be 1.0 miles from this viewpoint.



Photosimulation 46A: Normal view looking east on the ITS 87 bridge over Cold Stream toward the Capital Road bridge, and the proposed HVDC transmission line. Conductors will be visible crossing above Cold Stream at a distance of 250 feet from this viewpoint.

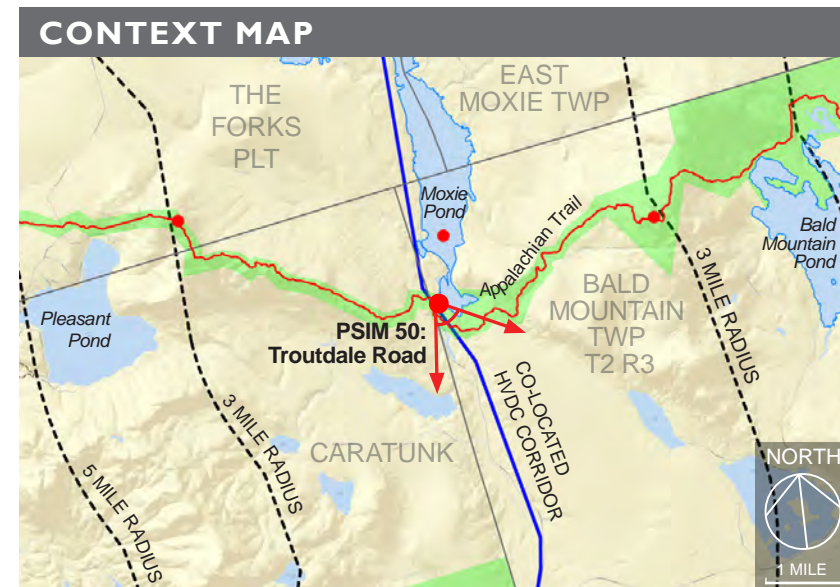


Photosimulation 46B: Normal view looking southeast on the ITS 87 bridge over Cold Stream toward the proposed HVDC transmission line. One HVDC structure will be visible 415 ft to the southeast filtered through the hardwood vegetation.

PHOTOSIMULATION 50: TROUTDALE ROAD, Bald Mountain Twp



Photosimulation 50: Panoramic view on Troutdale Road (private road) looking toward Joes Hole (Moxie Pond) toward the proposed co-located HVDC transmission line with proposed Joes Hole (Moxie Pond) buffer plantings in the foreground. The Appalachian Trail is located on Troutdale Road for approximately 1,000 ft including this section where the transmission corridor crosses. Over a distance of approximately 4,400' within the vicinity of the Appalachian Trail crossings, tapered vegetation management techniques will be used in both the existing 125' wide transmission line corridor and the proposed 75' widened corridor. Portions of six proposed HVDC structures will be visible from this viewpoint. The deciduous shrubs proposed will buffer the view of the existing and proposed clearing.



TECHNICAL INFORMATION																			
<p>Typical Cross Section</p>	<p>Photograph / Photosimulation Information</p> <table border="1"> <tr> <td>Location</td> <td>45.251855°, -69.830110°</td> </tr> <tr> <td>Viewing Direction</td> <td>Southeast to South</td> </tr> <tr> <td>Horizontal Angle of View</td> <td>75°</td> </tr> <tr> <td>Date and Time</td> <td>11/15/18 at 2:30 pm</td> </tr> <tr> <td>Camera Focal Length</td> <td>35 mm (50 mm equiv.)</td> </tr> <tr> <td>Camera Make/Model</td> <td>Nikon D5500</td> </tr> <tr> <td>Photo Source</td> <td>TJD&A</td> </tr> <tr> <td>Proposed Structures Visible</td> <td>6</td> </tr> <tr> <td>Approximate Distance to Nearest Visible Structure</td> <td>500 ft</td> </tr> </table>	Location	45.251855°, -69.830110°	Viewing Direction	Southeast to South	Horizontal Angle of View	75°	Date and Time	11/15/18 at 2:30 pm	Camera Focal Length	35 mm (50 mm equiv.)	Camera Make/Model	Nikon D5500	Photo Source	TJD&A	Proposed Structures Visible	6	Approximate Distance to Nearest Visible Structure	500 ft
Location	45.251855°, -69.830110°																		
Viewing Direction	Southeast to South																		
Horizontal Angle of View	75°																		
Date and Time	11/15/18 at 2:30 pm																		
Camera Focal Length	35 mm (50 mm equiv.)																		
Camera Make/Model	Nikon D5500																		
Photo Source	TJD&A																		
Proposed Structures Visible	6																		
Approximate Distance to Nearest Visible Structure	500 ft																		

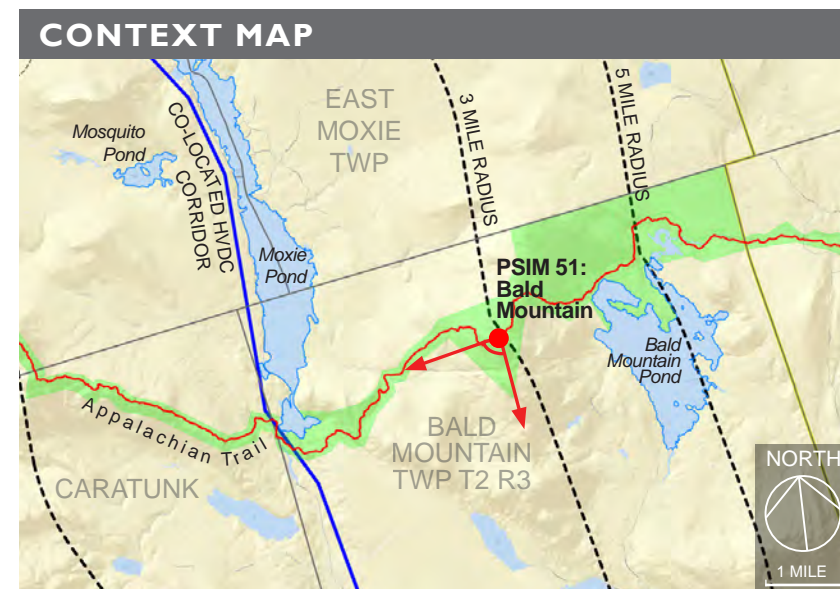
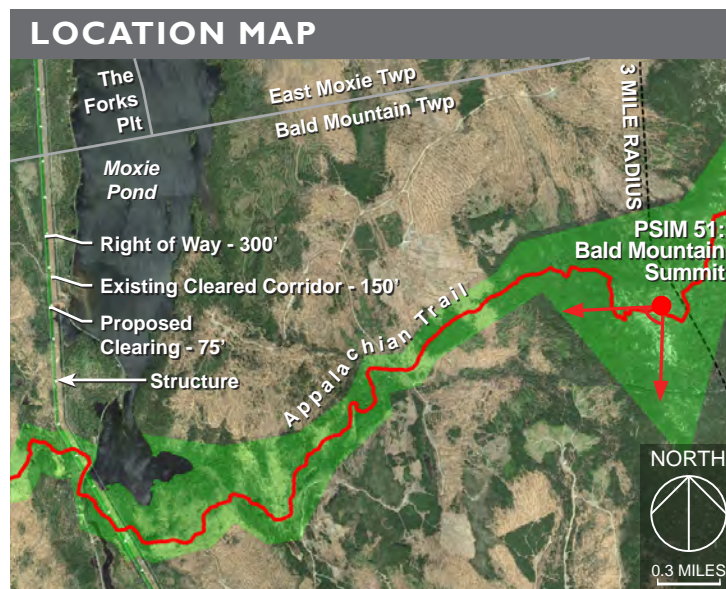


Photosimulation 50A: Normal view looking south on Troutdale Road (private road) looking toward the proposed co-located HVDC transmission line with proposed Joes Hole (Moxie Pond) buffer plantings in the foreground. Over a distance of approximately 4,400' within the vicinity of the Appalachian Trail crossings, tapered vegetation management techniques will be used in both the existing 125' wide transmission line corridor and the proposed 75' widened corridor. Portions of six proposed HVDC structures will be visible from this viewpoint.

PHOTOSIMULATION 51: BALD MOUNTAIN - Southwest, Bald Mountain Twp T2 R3



Photosimulation 51: Panoramic view looking from south to west toward the location of proposed co-located HVDC transmission line, from the summit of Bald Mountain on the Appalachian Trail in Bald Mountain Twp T2 R3. Approximately 800 ft of the AT on Bald Mountain will have Project views. Moxie Mountain is visible in the center of the image. Moxie Pond is visible on the right side of the image. A total of 14 structures will be visible within 3 miles from this viewpoint.



TECHNICAL INFORMATION	
Typical Cross Section	Photograph / Photosimulation Information
	Location
	Viewing Direction
	Horizontal Angle of View
	Date and Time
	Camera Focal Length
	Camera Make/Model
	Photo Source
	Proposed Structures Visible
	Approximate Distance to Nearest Visible Structure



Photosimulation 51A: Normal view looking southwest toward the existing 115 kV transmission line from the summit of Bald Mountain in Bald Mountain Twp T2 R3. The proposed structures, conductors, and cleared corridor visible in this direction are beyond 3 miles of this viewpoint.

PHOTOSIMULATION 51B: BALD MOUNTAIN - Southwest, Bald Mountain Twp T2 R3



Photosimulation 51B: Normal view looking southwest toward the proposed HVDC transmission line from the summit of Bald Mountain, in Bald Mountain Twp T2 R3. Ten proposed HVDC structures would be visible within 3 miles of this viewpoint.

PHOTOSIMULATION 51C: BALD MOUNTAIN - Southwest, Bald Mountain Twp T2 R3

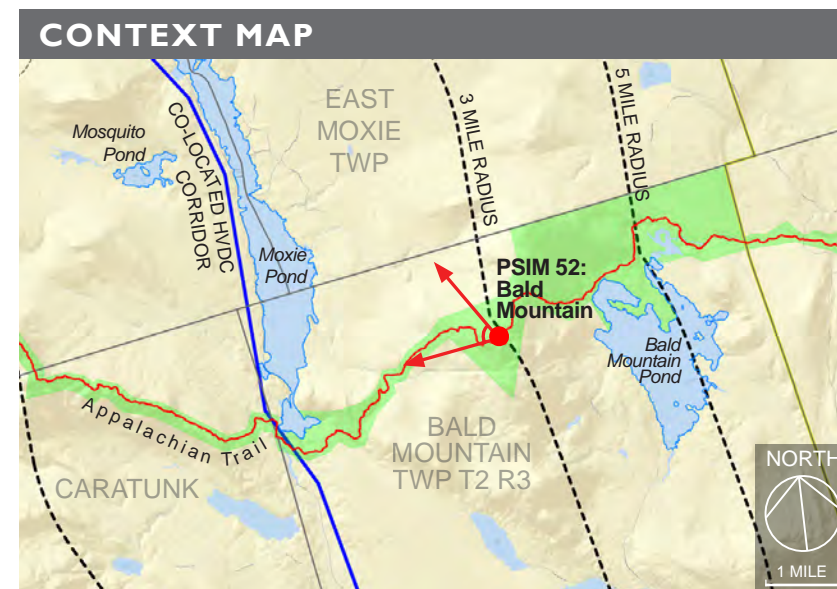
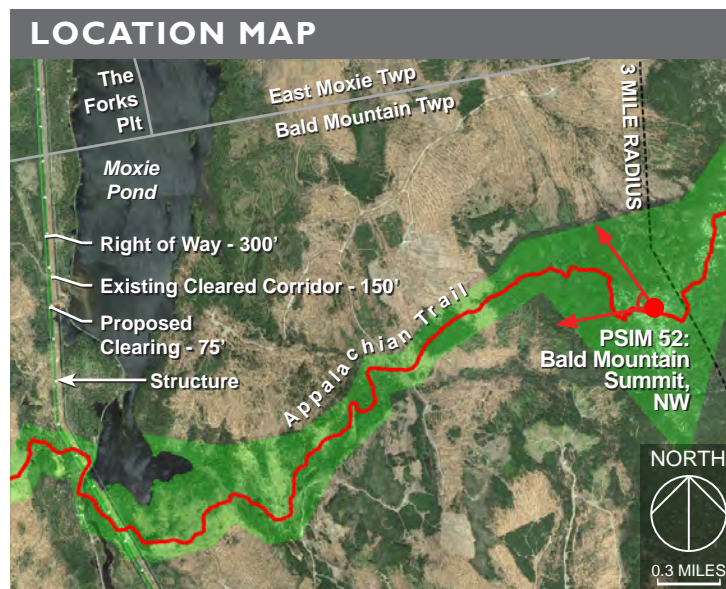


Photosimulation 51C: Normal view looking west toward the proposed HVDC transmission line from the summit of Bald Mountain, in Bald Mountain Twp T2 R3. Ten proposed HVDC structures and conductors would be visible within 3 miles of this viewpoint.

PHOTOSIMULATION 52: BALD MOUNTAIN - Northwest, Bald Mountain Twp T2 R3



Photosimulation 52: Continued panoramic view (from Photosimulation 51) looking from west to north toward the location of proposed co-located HVDC transmission line, from the summit of Bald Mountain on the Appalachian Trail in Bald Mountain TWP T2 R3. Approximately 800 ft of the AT on Bald Mountain will have project views. Moxie Mountain is visible in the center of the image. Moxie Pond is visible on the right side of the image. A total of five proposed HVDC structures would be visible within 3 miles of this viewpoint on the far side of Moxie Pond.



TECHNICAL INFORMATION	
Typical Cross Section 	Photograph / Photosimulation Information
Location	45.263362°, -69.773160°
Viewing Direction	West to North
Horizontal Angle of View	71°
Date and Time	11/11/18 at 12:08 pm
Camera Focal Length	35 mm (50 mm equiv.)
Camera Make/Model	Nikon D5500
Photo Source	TJD&A
Proposed Structures Visible	5 within 3 miles
Approximate Distance to Nearest Visible Structure	2.9 miles

PHOTOSIMULATION 52A: BALD MOUNTAIN - Northwest, Bald Mountain Twp T2 R3



Photosimulation 52A: Normal view looking west toward the proposed HVDC transmission line from the summit of Bald Mountain, in Bald Mountain Twp T2 R3. Five proposed HVDC structures, conductors, and portions of the cleared corridor would be visible from within 3 miles of this viewpoint.



Photosimulation 52B: Normal view looking northwest from the summit of Bald Mountain in Bald Mountain Twp T2 R3 toward the proposed HVDC transmission line. Two proposed HVDC structures and conductors would be visible from within 3 miles of this viewpoint. The wider corridor will be more visible during leaf-off conditions.

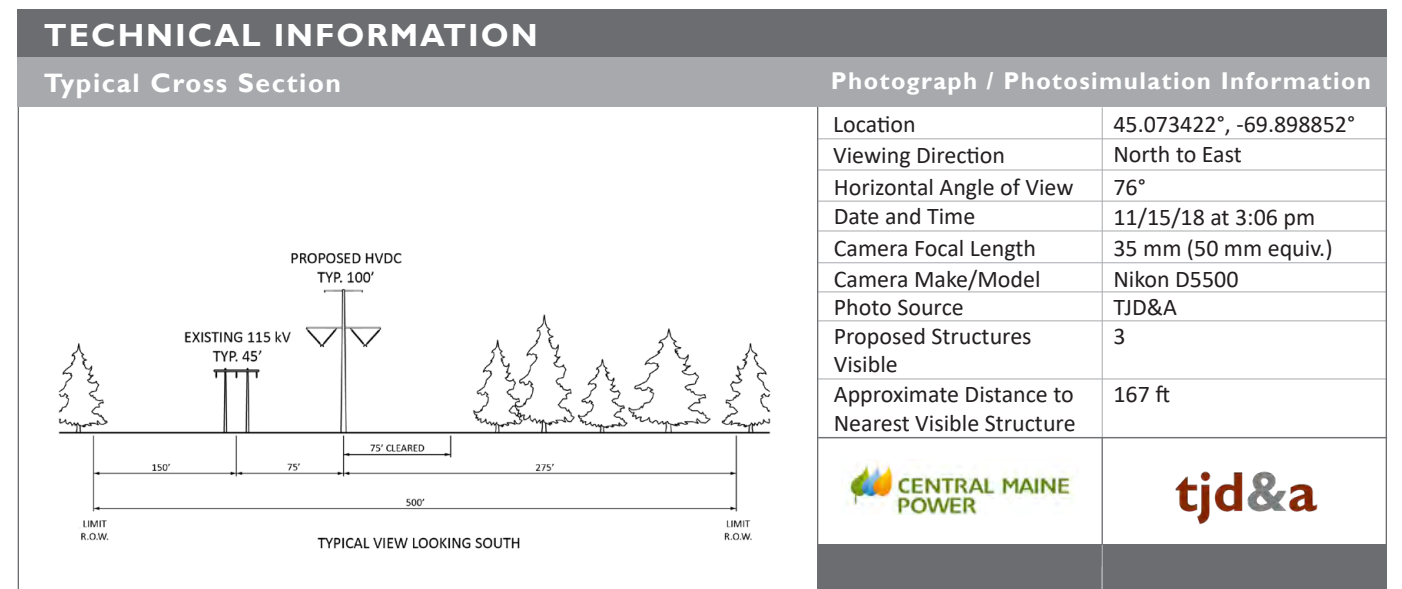
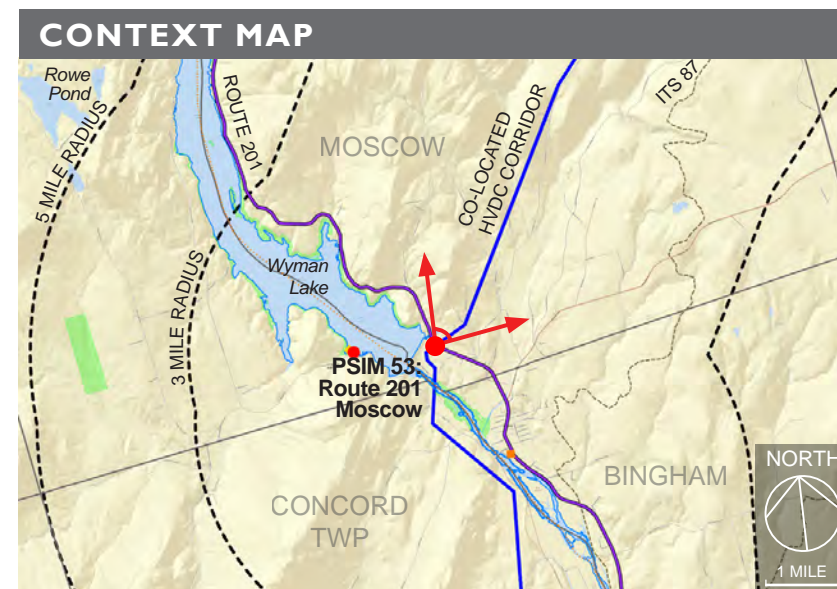
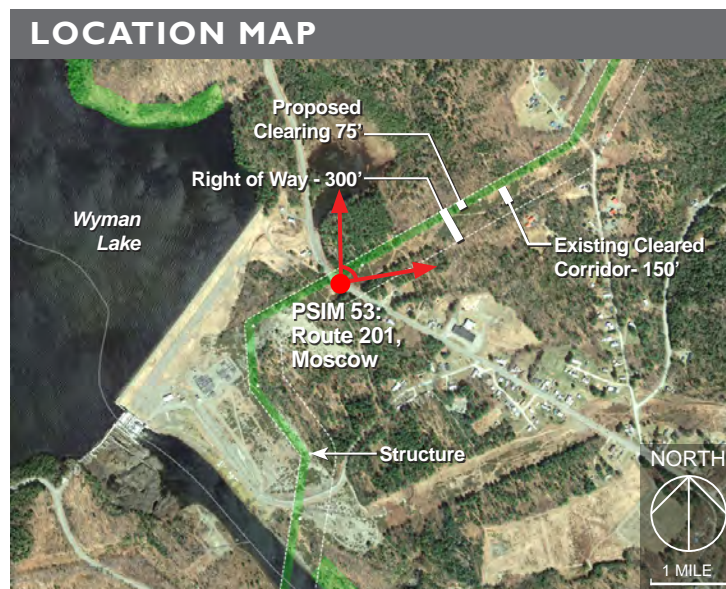
PHOTOSIMULATION 52C: BALD MOUNTAIN - Northwest, Bald Mountain Twp T2 R3



Photosimulation 52C: Normal view looking northwest from the summit of Bald Mountain in Bald Mountain Twp T2 R3 toward the proposed HVDC transmission line. The proposed structures and conductors that would be visible are beyond 3 miles of this viewpoint.



Photosimulation 53: Panoramic view looking from north to east from Route 201 in Moscow toward the proposed co-located HVDC transmission line. This portion of Route 201 is part of the Old Canada Road National Scenic Byway. The existing 225 ft wide corridor clearing will be widened by 75 ft on the western side (left of corridor in image) to accommodate the proposed transmission line. Three structures will be visible from this viewpoint.



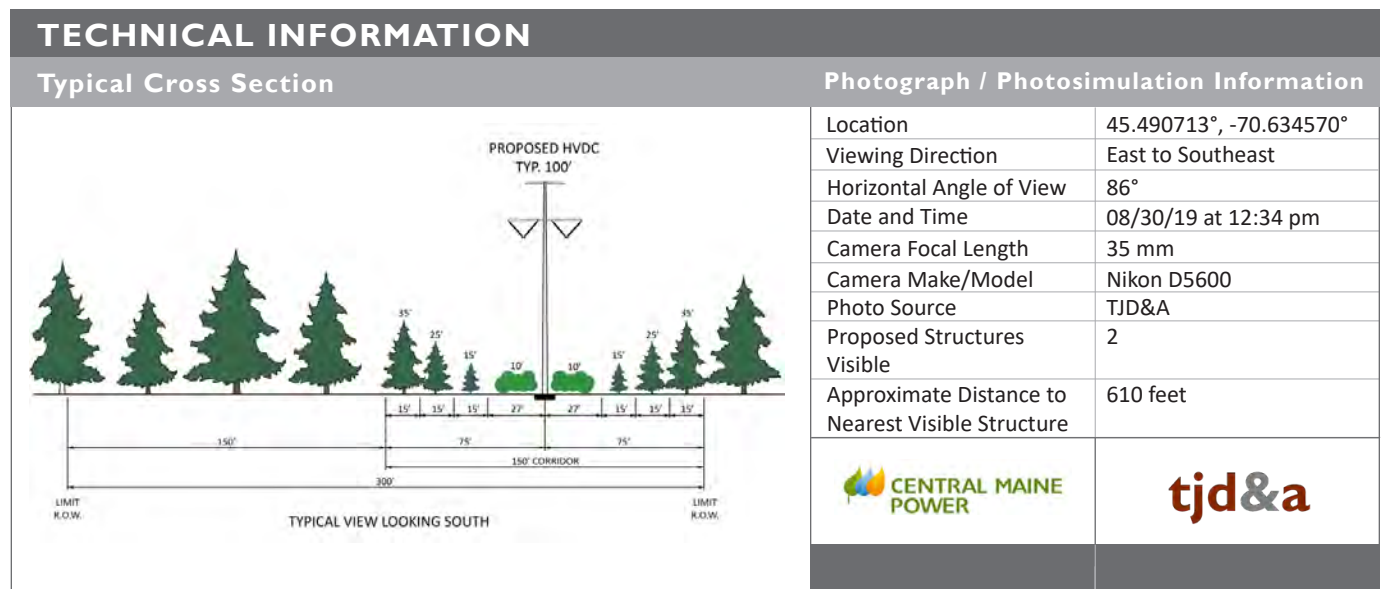
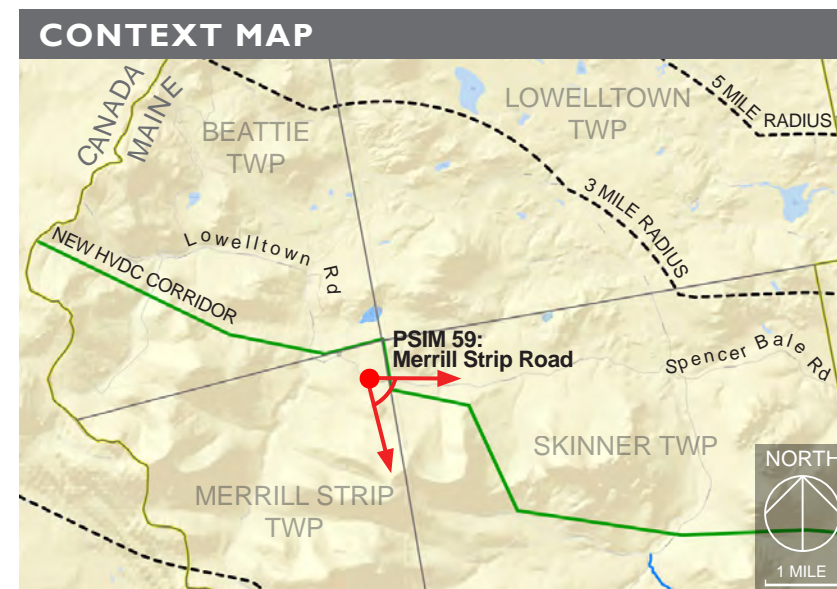
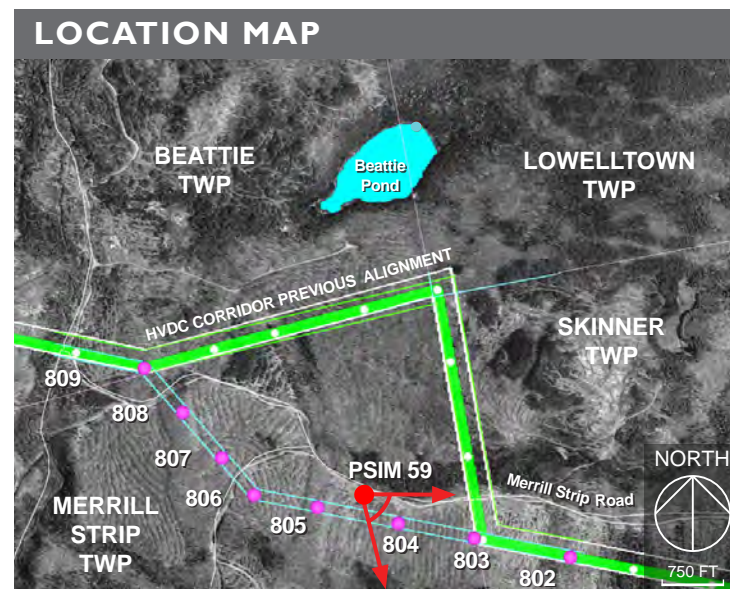


Photosimulation 53A: Normal view looking northeast toward the proposed co-located HVDC transmission line from Route 201 in Moscow. This portion of Route 201 is part of the Old Canada Road National Scenic Byway. The existing 225 ft wide corridor clearing will be widened by 75 ft on the western side (left of corridor in image) to accommodate the proposed HVDC transmission line. Three structures will be visible from this viewpoint.

PHOTOSIMULATION 59: MERRILL STRIP ROAD, MERRILL STRIP TWP



Photosimulation 59: Panoramic view looking east to southeast from Merrill Strip Road toward the proposed alternative section of the HVDC transmission line in Merrill Strip Township. Merrill Strip Road is a private haul road located south of Beattie Pond. This viewpoint looks over a regenerating timber harvesting laydown area which allows for a greater extent of potential Project visibility. The vegetation between the viewpoint and the proposed 150 ft wide alternative route area is approximately 20 to 30 feet in height. Typical conditions along Merrill Strip Road include 30 to 40 foot regenerating (primarily deciduous) vegetation located directly adjacent to and south of the roadside which will limit potential Project visibility for the majority of the road. Structure #804 (104.5 ft) and #803 (111.5 ft) will be visible from this viewpoint. The closest structure (#804) is 610 feet from the viewpoint. Smart Mountain is visible in the background (on right in image).





Photosimulation 59A: Normal view looking east from Merrill Strip Road toward the proposed alternative section of the HVDC transmission line in Merrill Strip Township. Two tangent structures (#804 at 104.5 ft and #803 at 111.5 ft), conductors, and shield wires will be visible from this viewpoint. The closest structure (#804) is 610 feet from the viewpoint.

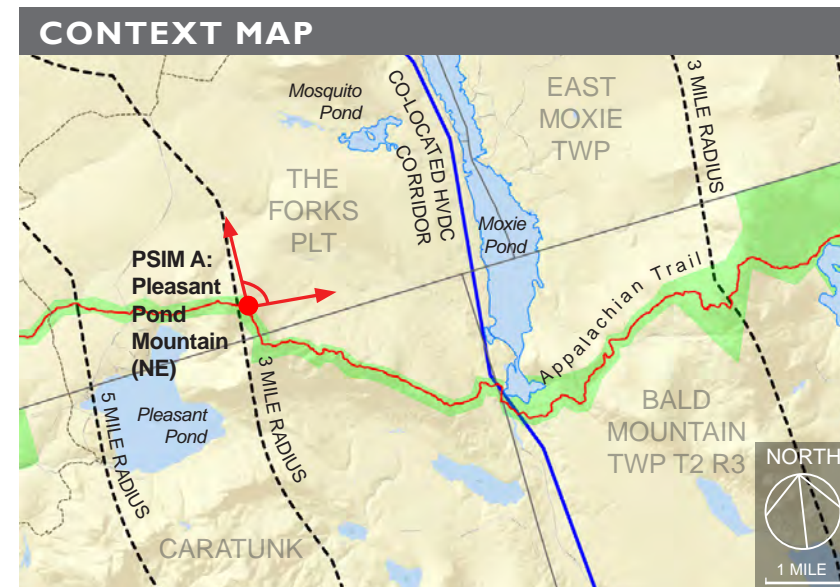
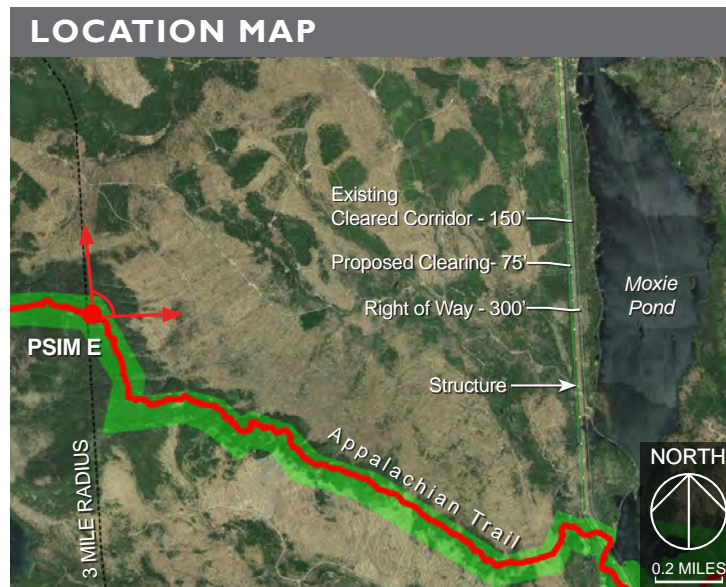


Photosimulation 59B: Normal view looking southeast from Merrill Strip Road toward the proposed alternative section of the HVDC transmission line in Merrill Strip Township. Structure #804 is shown at 104.5 ft in height and located 610 feet from this viewpoint. The conductors and shield wires will be visible.

VIEWPOINT 2 PHOTOSIMULATION A: PLEASANT POND MOUNTAIN, The Forks Plt



Proposed Conditions: Panoramic view looking north to northeast from a clearing 230' east of the summit on Pleasant Pond Mountain on the Appalachian Trail in The Forks Plt. toward the proposed HVDC and co-located HVDC transmission lines. Mosquito Mountain and Moxie Pond are visible in the center and right of the image. This image was selected to photosimulate because it offered a wider view than the marked summit of Pleasant Pond Mountain. The corridor location as seen in the image has been refined based on updated survey data and engineering design. No structures will be visible within 5 miles of this viewpoint when looking north to northeast.



TECHNICAL INFORMATION																			
<p>Typical Cross Section</p> <p>EXISTING 115 kV TYP. 45' TYP. A.G.C. HT 45'</p> <p>PROPOSED HVDC TYP. 70' TYP. A.G.C. HT 70'</p> <p>75' CLEARANCE</p> <p>300'</p> <p>LIMIT R.O.W. TYPICAL VIEW LOOKING SOUTH LIMIT R.O.W.</p>	<p>Photograph / Photosimulation Information</p> <table border="1"> <tr> <td>Location</td> <td>45.271673°, -69.894465°</td> </tr> <tr> <td>Viewing Direction</td> <td>North to Northeast</td> </tr> <tr> <td>Horizontal Angle of View</td> <td>100°</td> </tr> <tr> <td>Date and Time</td> <td>06/02/17 at 9:34 am</td> </tr> <tr> <td>Camera Focal Length</td> <td>35 mm</td> </tr> <tr> <td>Camera Make/Model</td> <td>Nikon D5500</td> </tr> <tr> <td>Photo Source</td> <td>TJD&A</td> </tr> <tr> <td>Proposed Structures Visible</td> <td>No visible structures within 3 miles</td> </tr> <tr> <td>Distance to Nearest Visible Structure</td> <td>N/A</td> </tr> </table>	Location	45.271673°, -69.894465°	Viewing Direction	North to Northeast	Horizontal Angle of View	100°	Date and Time	06/02/17 at 9:34 am	Camera Focal Length	35 mm	Camera Make/Model	Nikon D5500	Photo Source	TJD&A	Proposed Structures Visible	No visible structures within 3 miles	Distance to Nearest Visible Structure	N/A
Location	45.271673°, -69.894465°																		
Viewing Direction	North to Northeast																		
Horizontal Angle of View	100°																		
Date and Time	06/02/17 at 9:34 am																		
Camera Focal Length	35 mm																		
Camera Make/Model	Nikon D5500																		
Photo Source	TJD&A																		
Proposed Structures Visible	No visible structures within 3 miles																		
Distance to Nearest Visible Structure	N/A																		

VIEWPOINT 2 PHOTOSIMULATION A: PLEASANT POND MOUNTAIN, The Forks Pt



Proposed Conditions: Normal view looking north from Pleasant Pond Mountain toward the proposed HVDC transmission line. The proposed corridor will be 5.5 to 7.1 miles from this location. The corridor location as seen in the image has been refined based on updated survey data and engineering design.

VIEWPOINT 2 PHOTOSIMULATION A: PLEASANT POND MOUNTAIN, The Forks Plt



Highlighted Location of
Proposed Co-Located HVDC Corridor

Proposed Conditions: Normal view looking north from Pleasant Pond Mountain toward the proposed HVDC transmission line. The proposed corridor will be 5.5 to 7.1 miles from this location. Due to updated engineering and surface data, the corridor location has shifted slightly as seen from this viewpoint.

VIEWPOINT 2 PHOTOSIMULATION A: PLEASANT POND MOUNTAIN, The Forks Plt



Proposed Conditions: Normal view looking north from Pleasant Pond Mountain toward the proposed co-located HVDC transmission line. No proposed structures will be visible from this viewpoint due to intervening vegetation and topography. Enlargement views are not provided because there are no structures visible.

VIEWPOINT 2 PHOTOSIMULATION A: PLEASANT POND MOUNTAIN, The Forks Plt

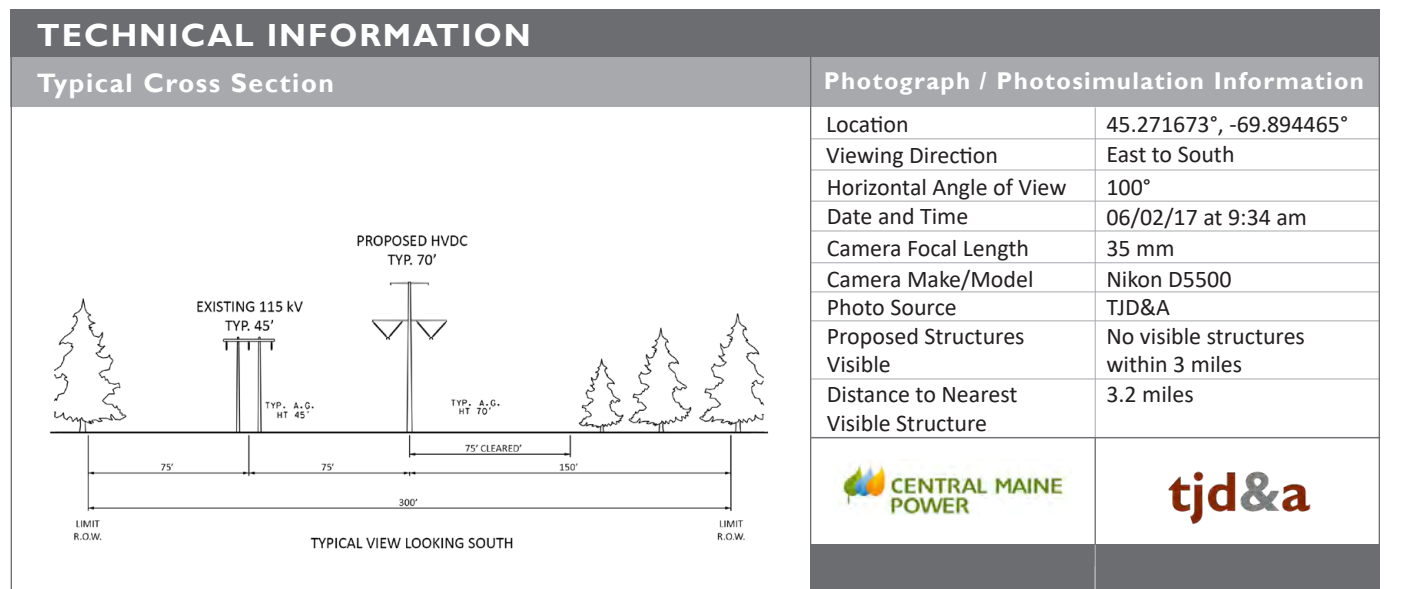
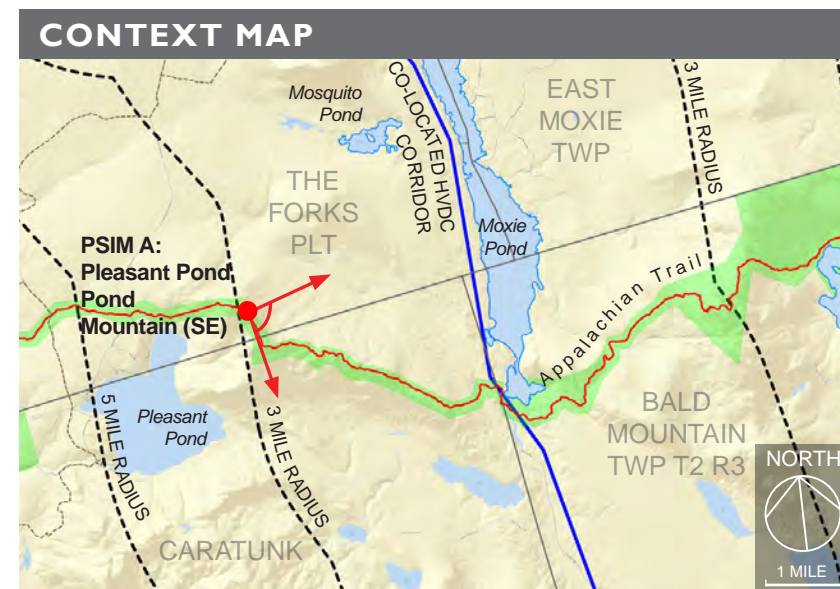


Proposed Conditions: Normal view looking northeast from Pleasant Pond Mountain toward the proposed co-located HVDC transmission line. No proposed structures will be visible from this viewpoint due to intervening vegetation and terrain. Enlargement views are not provided because there are no structures visible.

VIEWPOINT 2 PHOTOSIMULATION A: PLEASANT POND MOUNTAIN, The Forks Plt



Proposed Conditions: Continued panoramic view looking northeast to southeast from a clearing 230' east of the summit on Pleasant Pond Mountain on the Appalachian Trail in The Forks Plt. toward the proposed co-located HVDC transmission line. Bald Mountain and Moxie Pond are visible in the center of the image. The corridor location as seen in the image has been refined based on updated survey data and engineering design. The closest visible structure in the proposed HVDC corridor will be 3.2 miles from this viewpoint.



VIEWPOINT 2 PHOTOSIMULATION A: PLEASANT POND MOUNTAIN, The Forks Plt



Proposed Conditions: Normal view looking northeast from Pleasant Pond Mountain toward the proposed co-located HVDC transmission line. One proposed structure and conductors will be visible at a distance of 3.2 miles from this viewpoint.

VIEWPOINT 2 PHOTOSIMULATION A: PLEASANT POND MOUNTAIN, The Forks Pt



Proposed Conditions: Normal view looking northeast from Pleasant Pond Mountain toward the proposed co-located HVDC transmission line. One proposed structure and conductors will be visible at a distance of 3.2 miles from this viewpoint.

VIEWPOINT 2 PHOTOSIMULATION A: PLEASANT POND MOUNTAIN, The Forks Plt

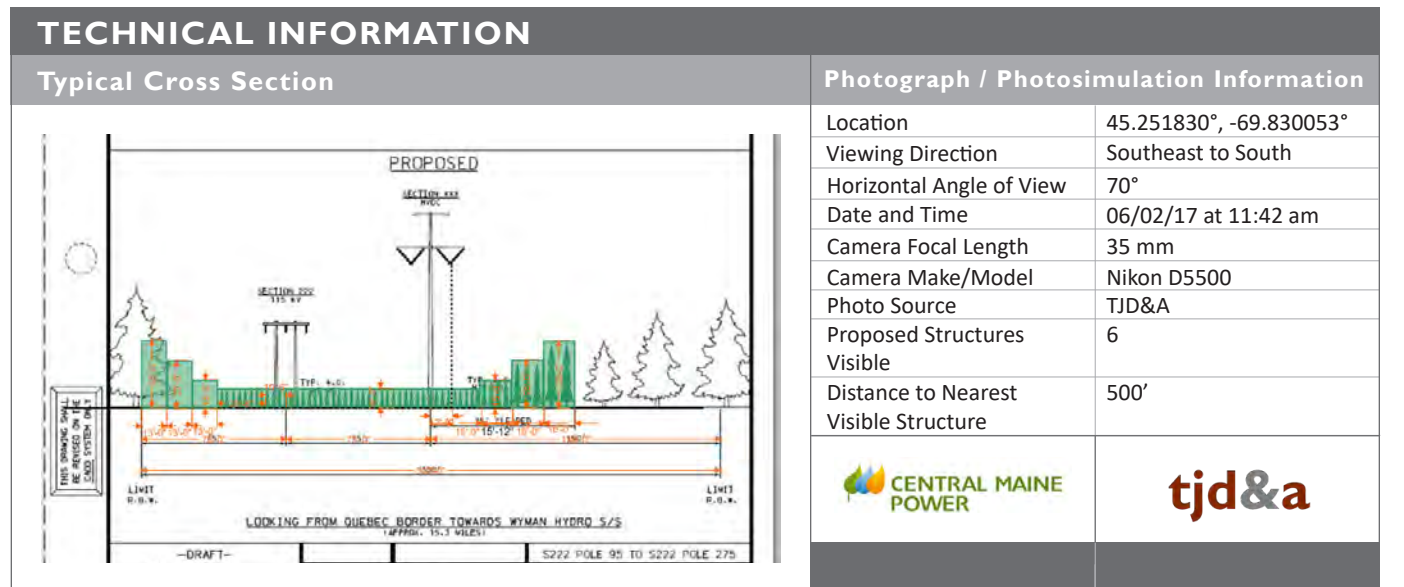
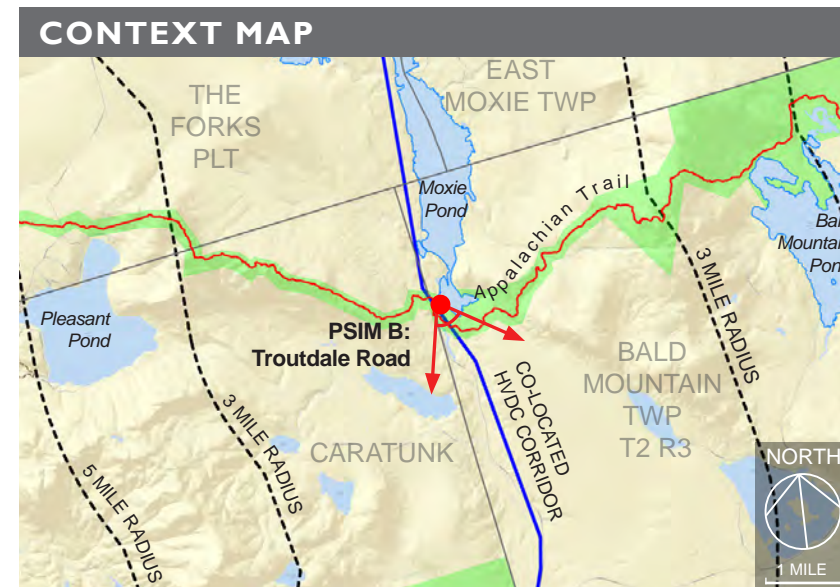
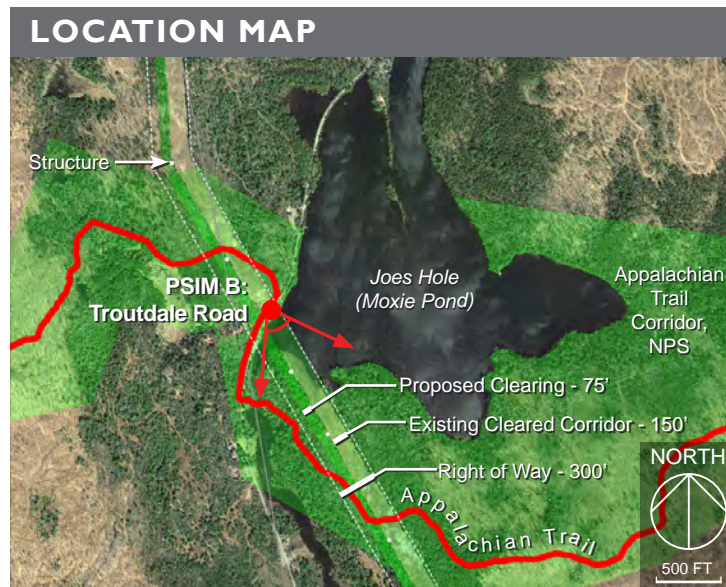


Proposed Conditions: Normal view looking east from Pleasant Pond Mountain toward the proposed co-located HVDC transmission line. Up to 12 proposed structures and conductors will be visible at a distances of 4.5 - 6.5 miles from this viewpoint. The corridor location as seen in the image has been refined based on updated survey data and engineering design.

VIEWPOINT 6 PHOTOSIMULATION B: TROUTDALE ROAD, Bald Mountain Twp



Proposed Conditions: Panoramic view looking from southeast to south on Troutdale Road looking toward Joes Hole (Moxie Pond) in Bald Mountain TWP toward the proposed co-located HVDC transmission line. The Appalachian Trail is currently located on Troutdale Road for approximately 1,000' including this section where the transmission corridor crosses. Over a distance of approximately 4,400' within the vicinity of the Appalachian Trail crossings, tapered vegetation management techniques will be used in both the existing 125' wide transmission line corridor and the proposed 75' widened corridor. Portions of six HVDC structures will be visible from this viewpoint. This photosimulation illustrates vegetation re-growth anticipated within 10 to 15 years after installation.



VIEWPOINT 6 PHOTOSIMULATION B:TROUTDALE ROAD, Bald Mountain Twp



Proposed Conditions: Normal view looking south on Troutdale Road looking toward Joes Hole toward the proposed co-located HVDC transmission line. Over a distance of approximately 4,400' within the vicinity of the Appalachian Trail crossings, tapered vegetation management techniques will be used in both the existing 125' wide transmission line corridor and the proposed 75' widened corridor. Portions of six HVDC structures will be visible from this viewpoint. This photosimulation illustrates vegetation re-growth anticipated within 10 to 15 years after installation.

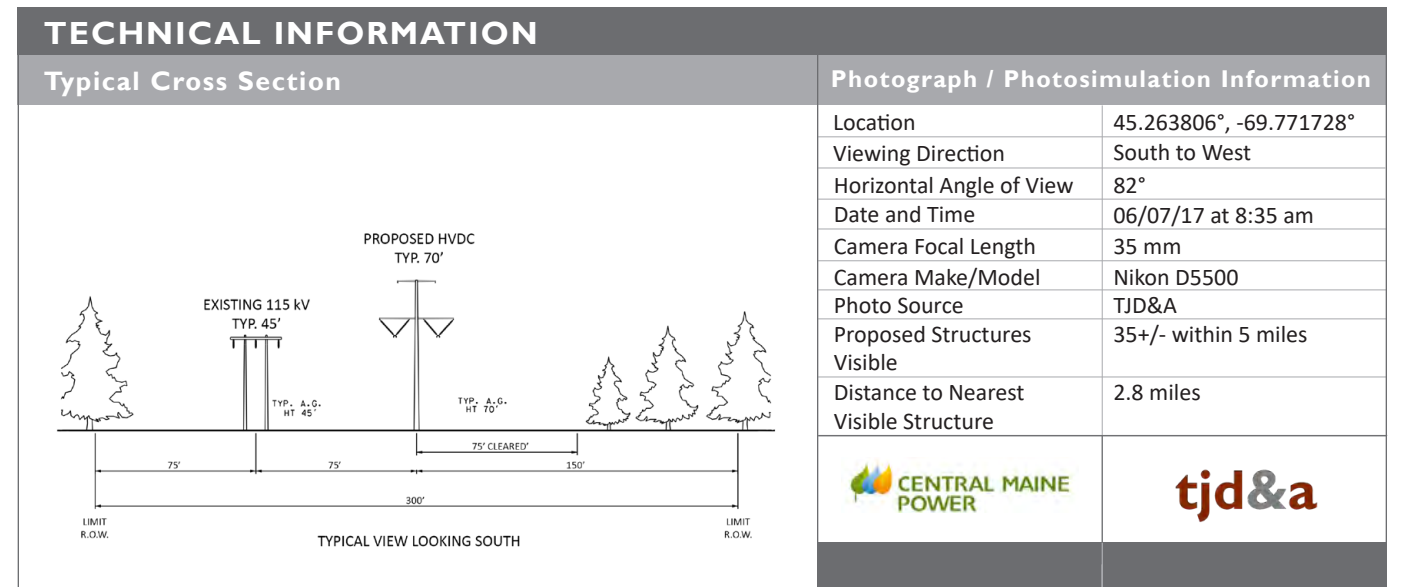
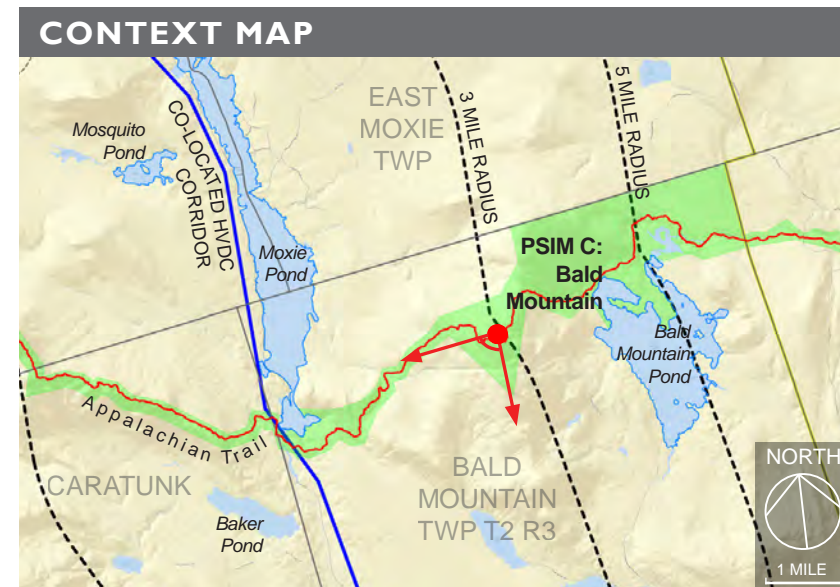
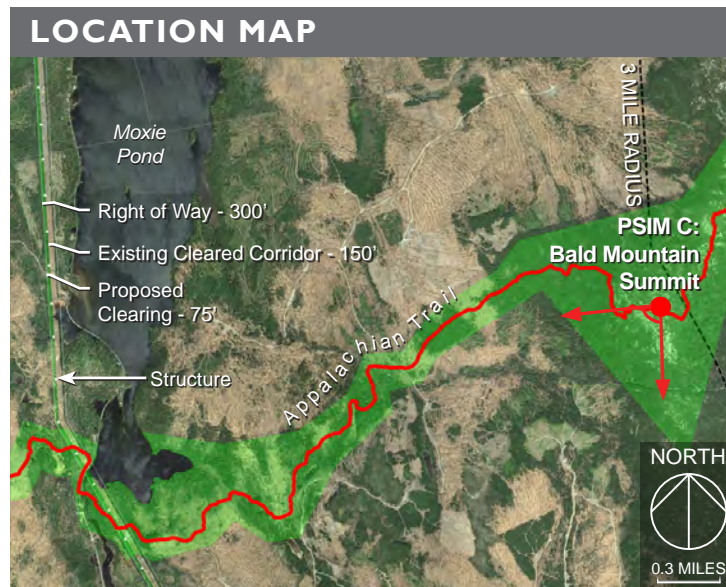
VIEWPOINT 6 PHOTOSIMULATION B:TROUTDALE ROAD, Bald Mountain Twp



Proposed Conditions: Normal view looking south on Troutdale Road looking toward Joes Hole toward the proposed co-located HVDC transmission line. Over a distance of approximately 4,400' within the vicinity of the Appalachian Trail crossings, tapered vegetation management techniques will be used in both the existing 125' wide transmission line corridor and the proposed 75' widened corridor. Portions of six HVDC structures will be visible from this viewpoint. This photosimulation illustrates foreground vegetation buffer growth anticipated within 10 to 15 years after installation.



Proposed Conditions: Panoramic view looking from south to west from the summit of Bald Mountain on the Appalachian Trail in Bald Mountain TWP toward the proposed co-located HVDC transmission line. Moxie Mountain is visible on the right side of the image with Baker Pond visible below.



VIEWPOINT 9 PHOTOSIMULATION C: BALD MOUNTAIN SUMMIT, Bald Mountain TWP



Proposed Conditions: Normal view looking south from the summit of Bald Mountain toward the proposed co-located HVDC transmission line. The corridor will be partially visible at a distance of 7.5 miles.



Highlighted Location of
Proposed Co-Located HVDC Corridor

Proposed Conditions: Normal view looking south from the summit of Bald Mountain toward the proposed co-located HVDC transmission line. The corridor will be partially visible at a distance of 7.5 miles. The proposed co-located HVDC corridor location has been highlighted for reference.

PHOTOSIMULATION C: BALD MOUNTAIN SUMMIT, Bald Mountain Twp



Proposed Conditions: Normal view looking southwest from Bald Mountain Summit. The corridor will be partially visible at a distance of 2.8 miles.

PHOTOSIMULATION C: BALD MOUNTAIN SUMMIT, Bald Mountain Twp

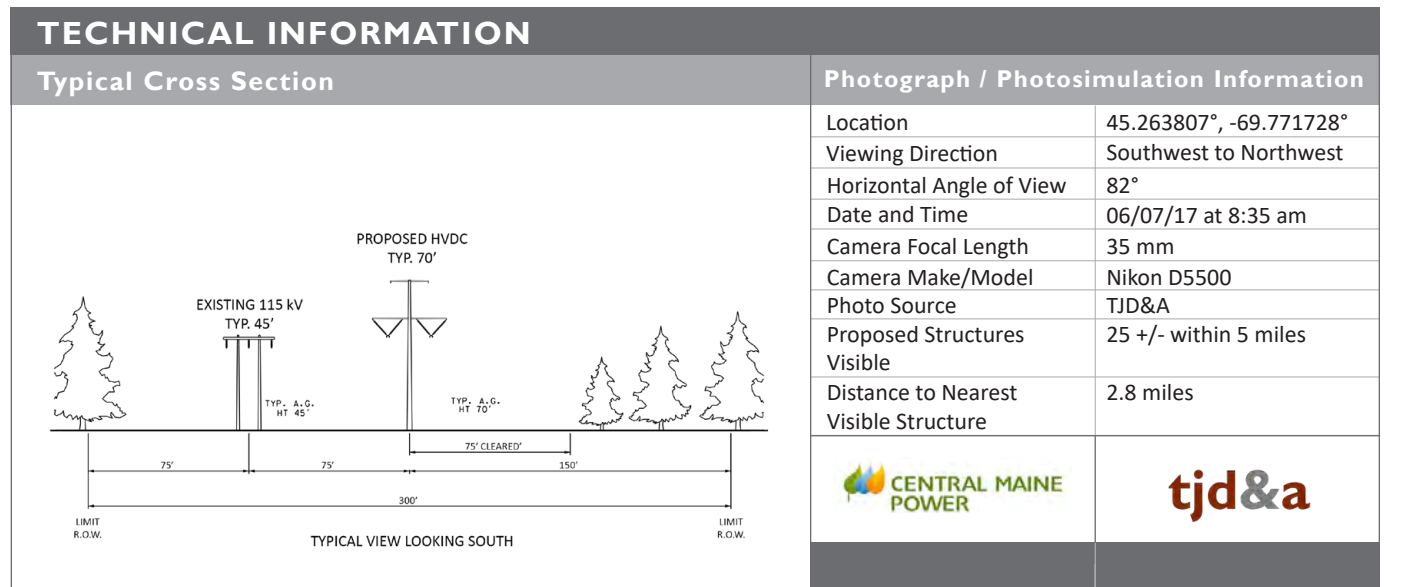
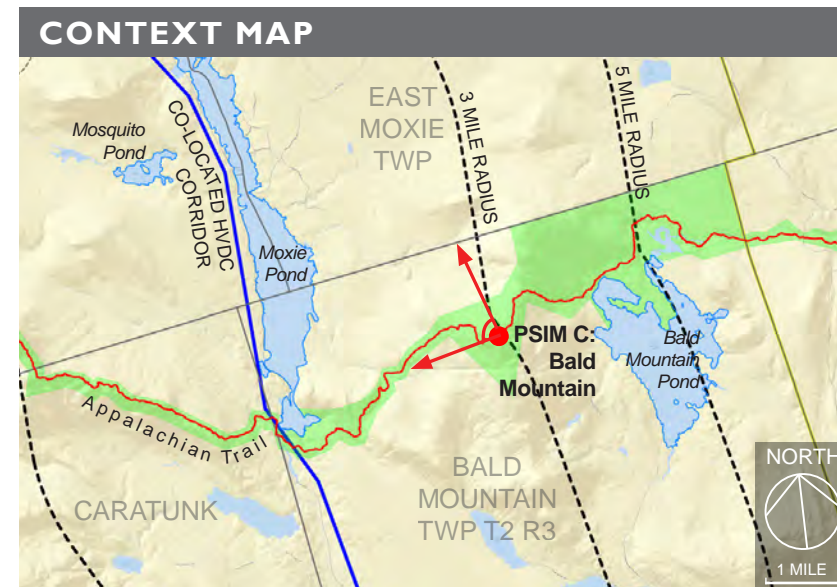
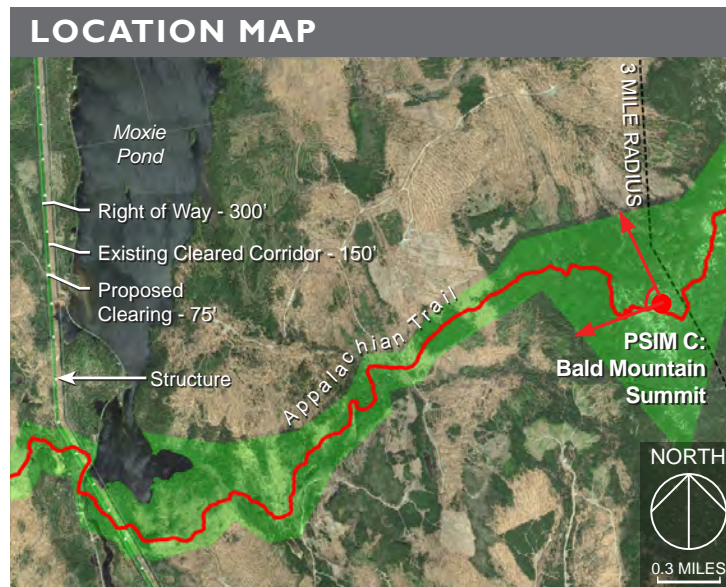


Proposed Conditions: Normal view looking Northwest from Bald Mountain Summit. The corridor will be partially visible at a distance of 2.8 miles. The proposed co-located HVDC corridor location has been highlighted for reference.

VIEWPOINT 9 PHOTOSIMULATION C: BALD MOUNTAIN SUMMIT, Bald Mountain TWP



Proposed Conditions: Panoramic view looking from southwest to northwest from the summit of Bald Mountain on the Appalachian Trail in Bald Mountain TWP toward the proposed co-located HVDC transmission line. Pleasant Pond Mountain is visible on the left side of the image. Mosquito Mountain and Moxie Pond are visible on the right side of the image.

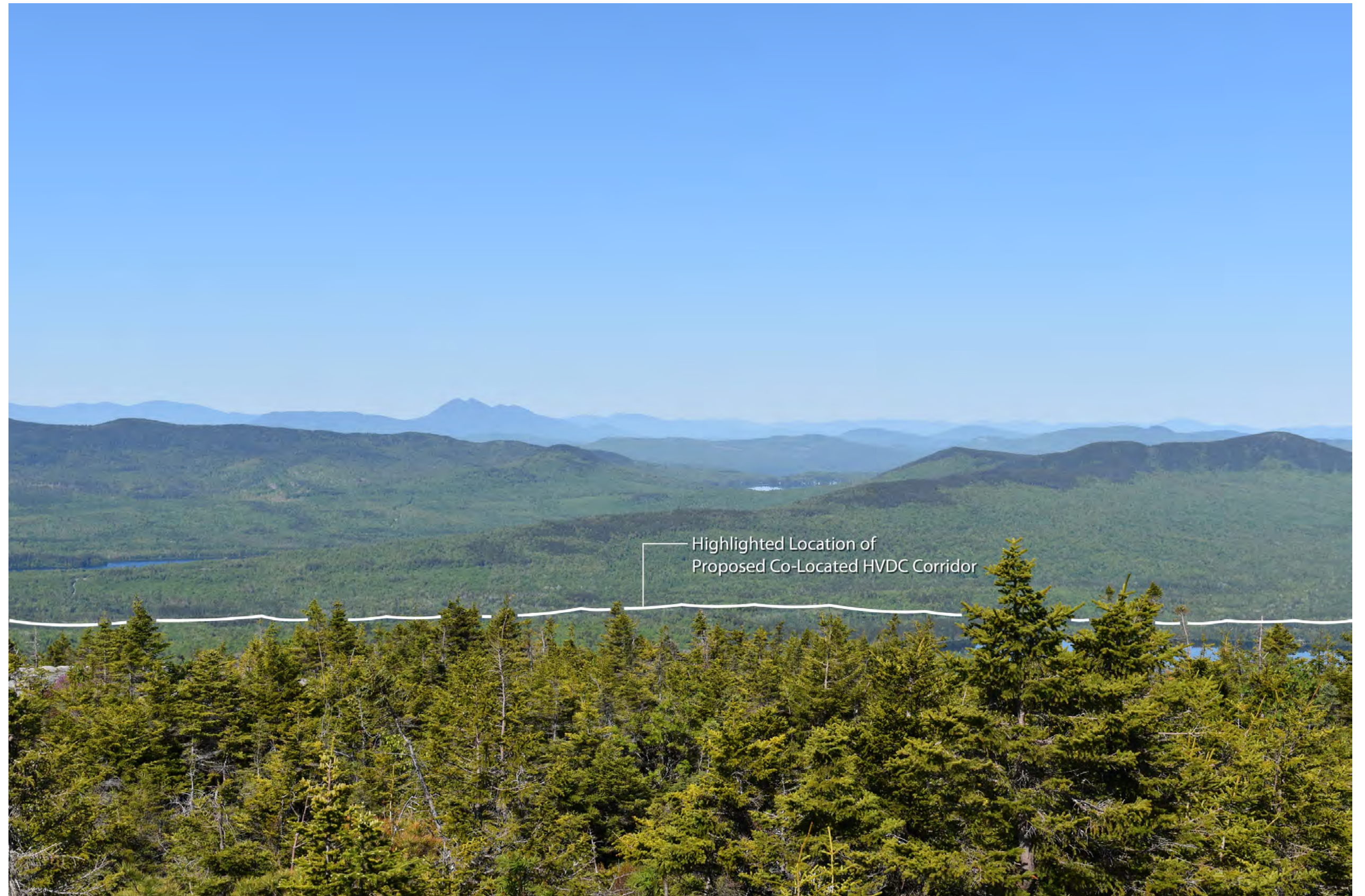


PHOTOSIMULATION C: BALD MOUNTAIN SUMMIT, Bald Mountain Twp



Proposed Conditions: Normal view looking southwest from Bald Mountain Summit. The co-located HVDC corridor will be visible at a distance of 3.0 miles.

PHOTOSIMULATION C: BALD MOUNTAIN SUMMIT, Bald Mountain Twp



Proposed Conditions: Normal view looking southwest from Bald Mountain Summit. The co-located HVDC corridor will be visible at a distance of 3.0 miles. The proposed co-located HVDC corridor location has been highlighted for reference.

PHOTOSIMULATION C: BALD MOUNTAIN SUMMIT, Bald Mountain Twp



Proposed Conditions: Normal view looking west from Bald Mountain Summit. The proposed co-located HVDC corridor will be partially visible on the far side of Moxie Pond at a distance of 3.1 miles.

PHOTOSIMULATION C: BALD MOUNTAIN SUMMIT, Bald Mountain Twp



Proposed Conditions: Normal view looking west from Bald Mountain Summit. The proposed co-located HVDC corridor will be partially visible on the far side of Moxie Pond at a distance of 3.1 miles. The proposed co-located HVDC corridor location has been highlighted for reference.

PHOTOSIMULATION C: BALD MOUNTAIN SUMMIT, Bald Mountain Twp



Proposed Conditions: Normal view looking northwest from Bald Mountain Summit. The proposed co-located corridor will be visible on the far side of Moxie Pond at a distance of 3.4 miles. The widened corridor will be visible where the existing corridor is visible.

PHOTOSIMULATION C: BALD MOUNTAIN SUMMIT, Bald Mountain Twp



Proposed Conditions: Normal view looking northwest from Bald Mountain Summit. The proposed co-located corridor will be visible on the far side of Moxie Pond at a distance of 3.4 miles. The widened corridor will be visible where the existing corridor is visible. The proposed co-located HVDC corridor location has been highlighted for reference.