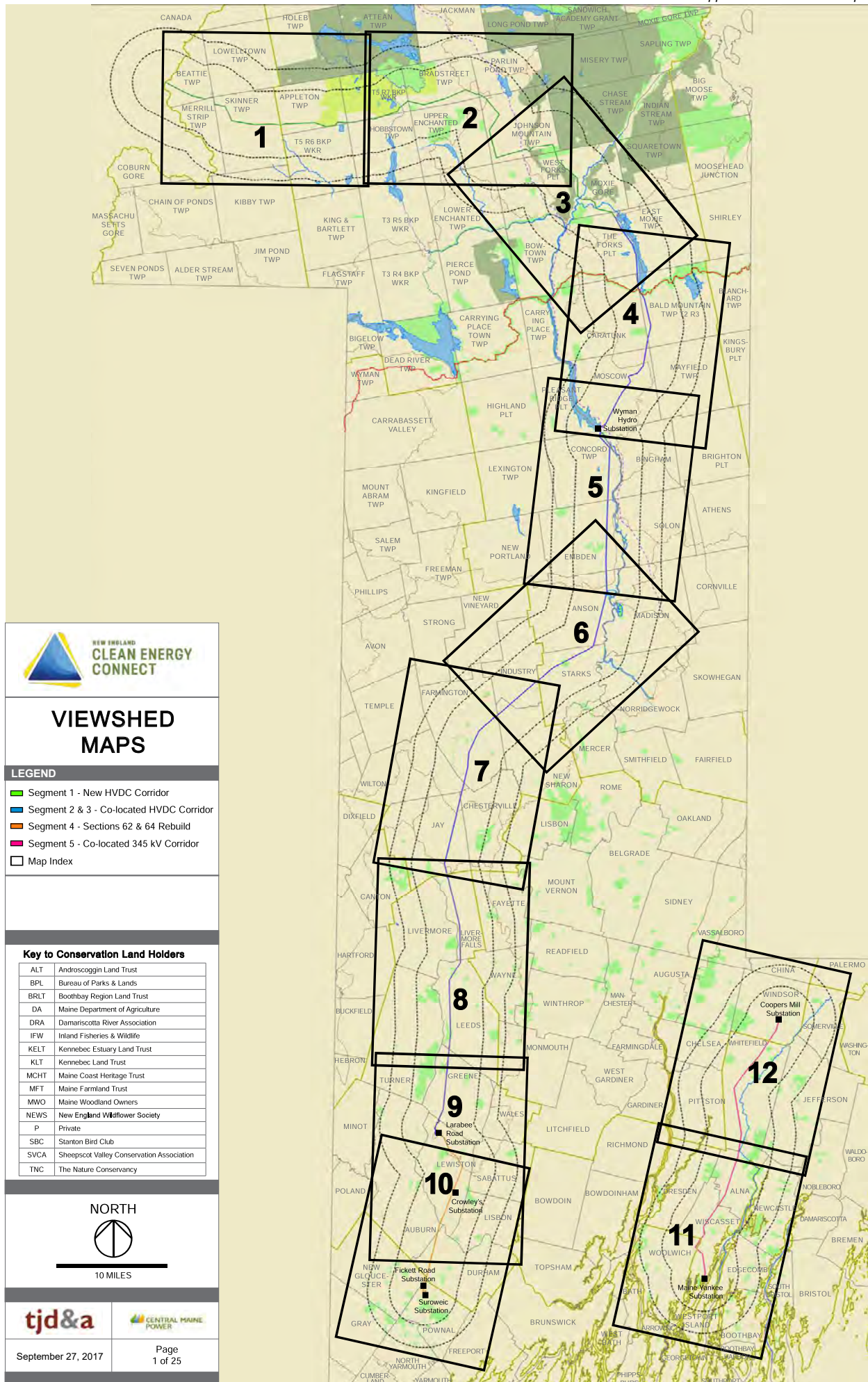


Appendix E
Visual Resources



VIEWSHED MAPS

LEGEND

- Segment 1 - New HVDC Corridor
- Segment 2 & 3 - Co-located HVDC Corridor
- Segment 4 - Sections 62 & 64 Rebuild
- Segment 5 - Co-located 345 kV Corridor
- Map Index

Key to Conservation Land Holders

ALT	Androscoggin Land Trust
BPL	Bureau of Parks & Lands
BRLT	Boothbay Region Land Trust
DA	Maine Department of Agriculture
DRA	Damariscotta River Association
IFW	Inland Fisheries & Wildlife
KELT	Kennebec Estuary Land Trust
KLT	Kennebec Land Trust
MCHT	Maine Coast Heritage Trust
MFT	Maine Farmland Trust
MWO	Maine Woodland Owners
NEWS	New England Wildflower Society
P	Private
SBC	Stanton Bird Club
SVCA	Sheepsfoot Valley Conservation Association
TNC	The Nature Conservancy

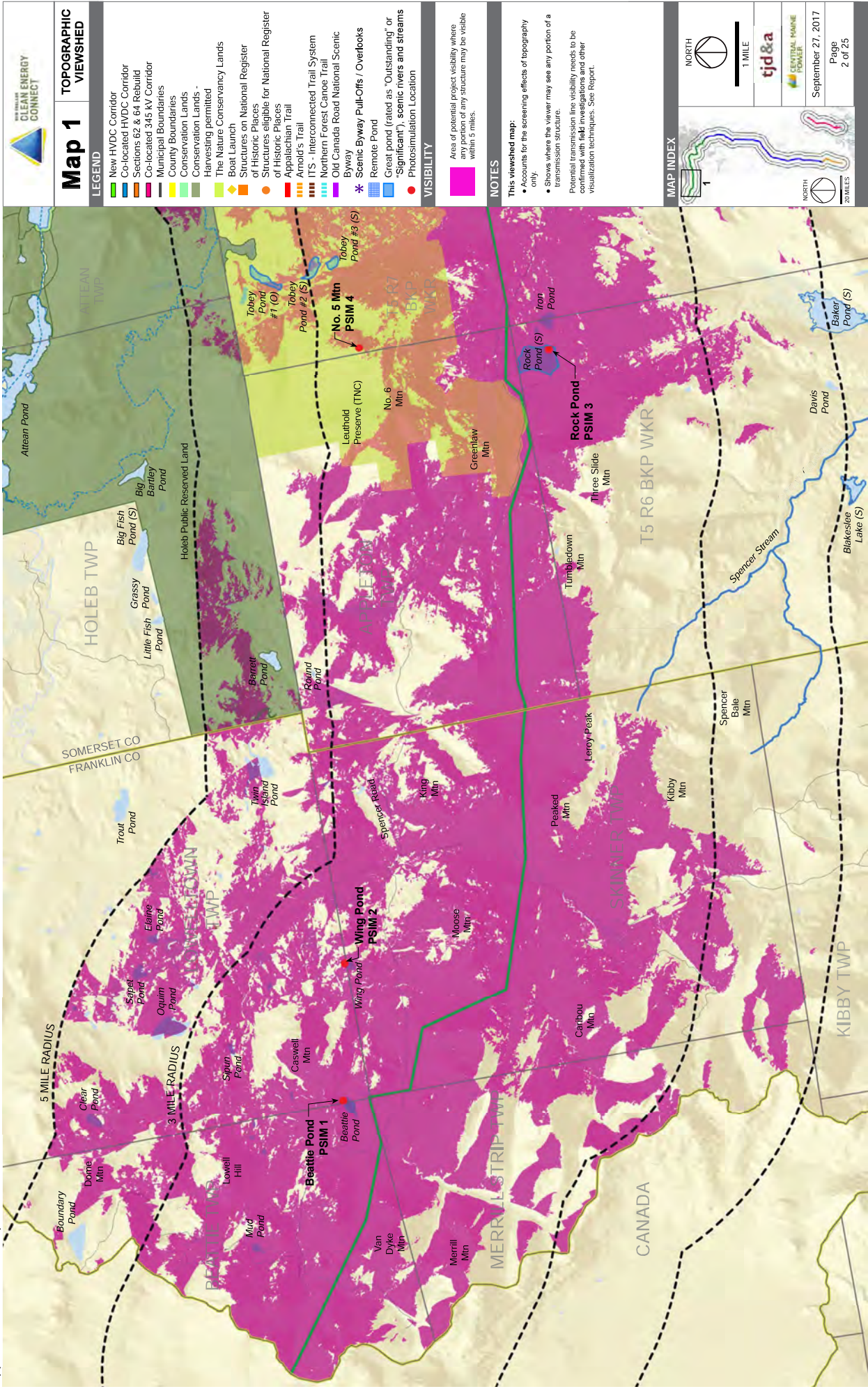
NORTH



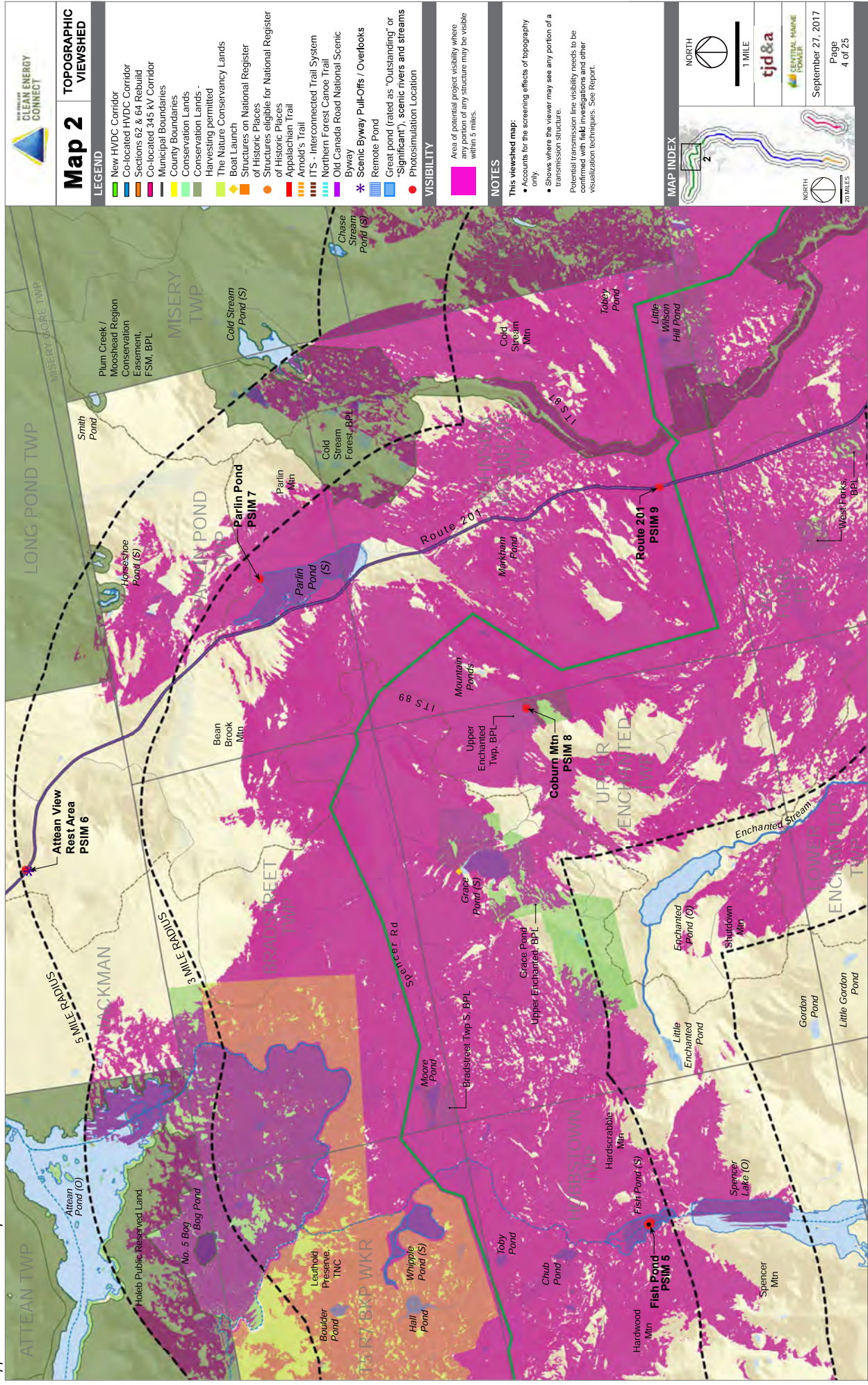
10 MILES

tjd&a

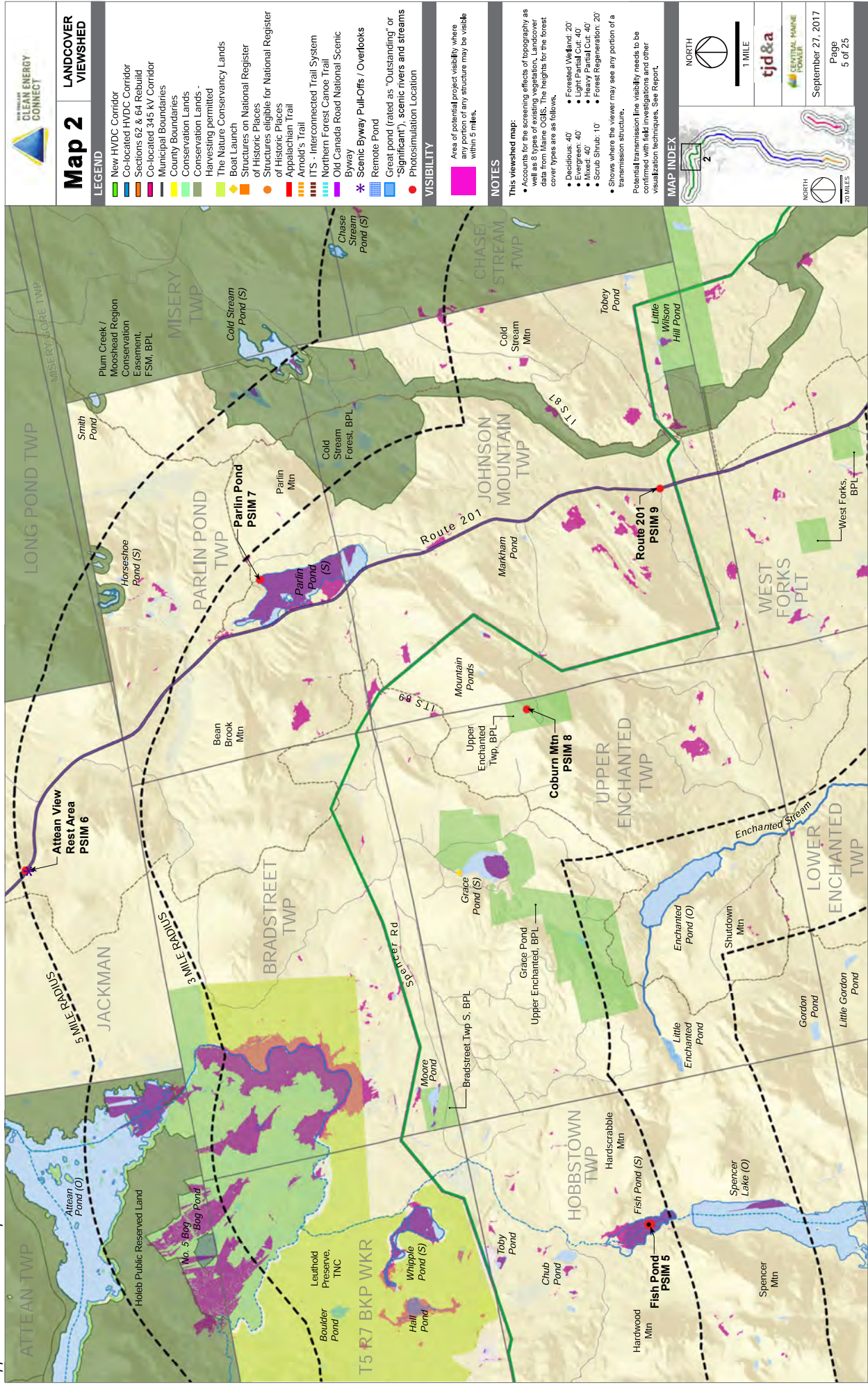




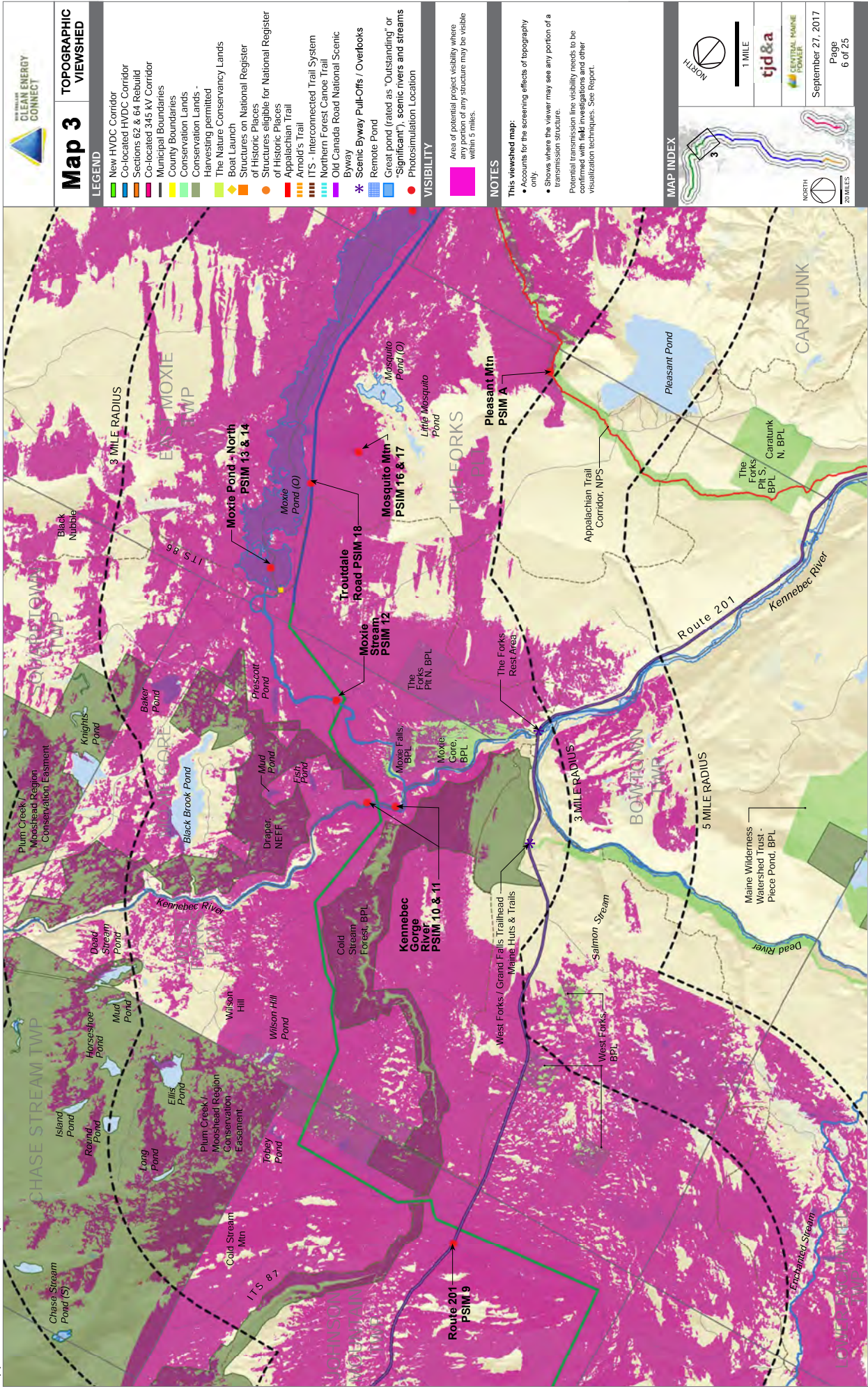
Appendix C: Viewshed Maps



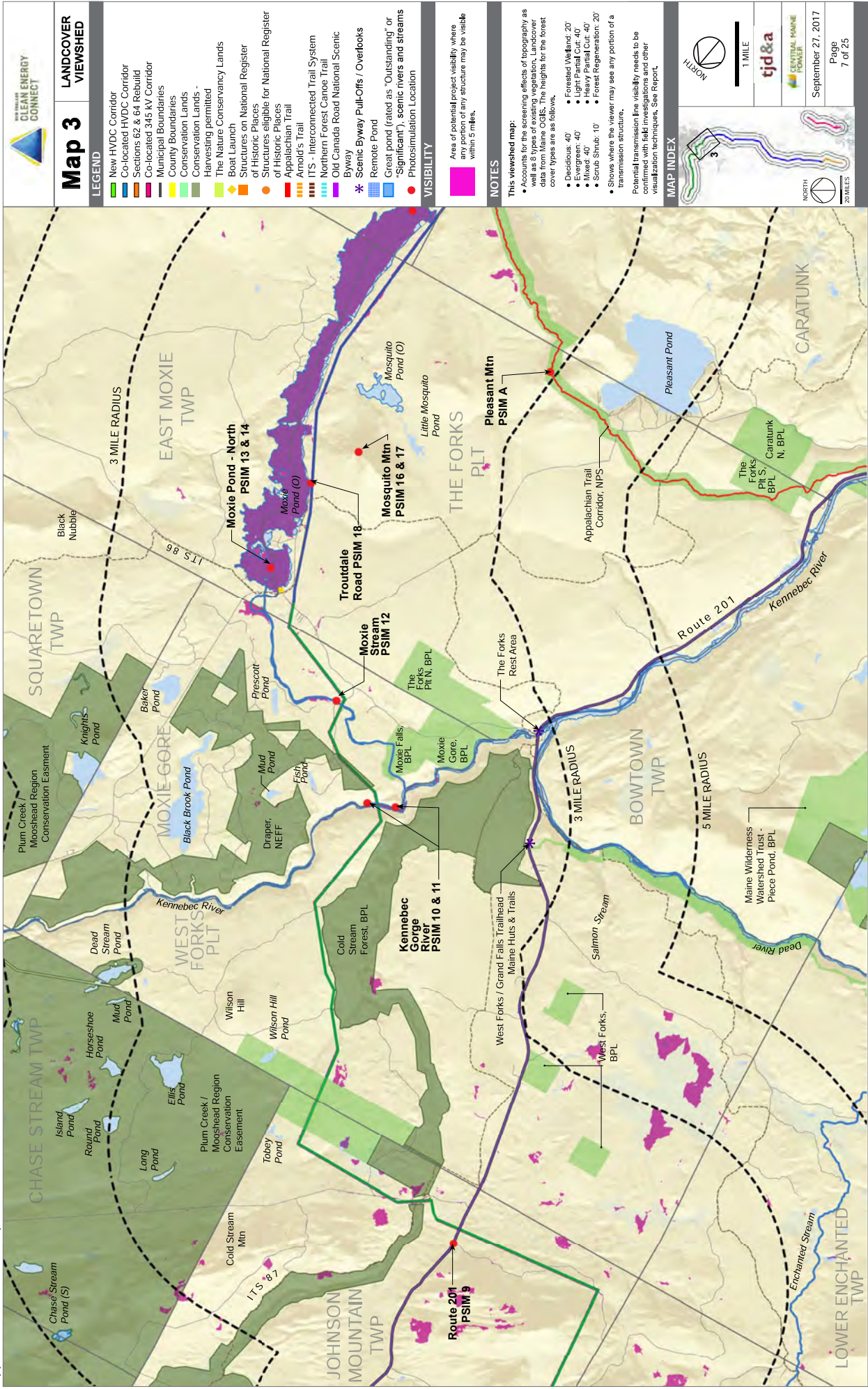
Appendix C: Viewshed Maps

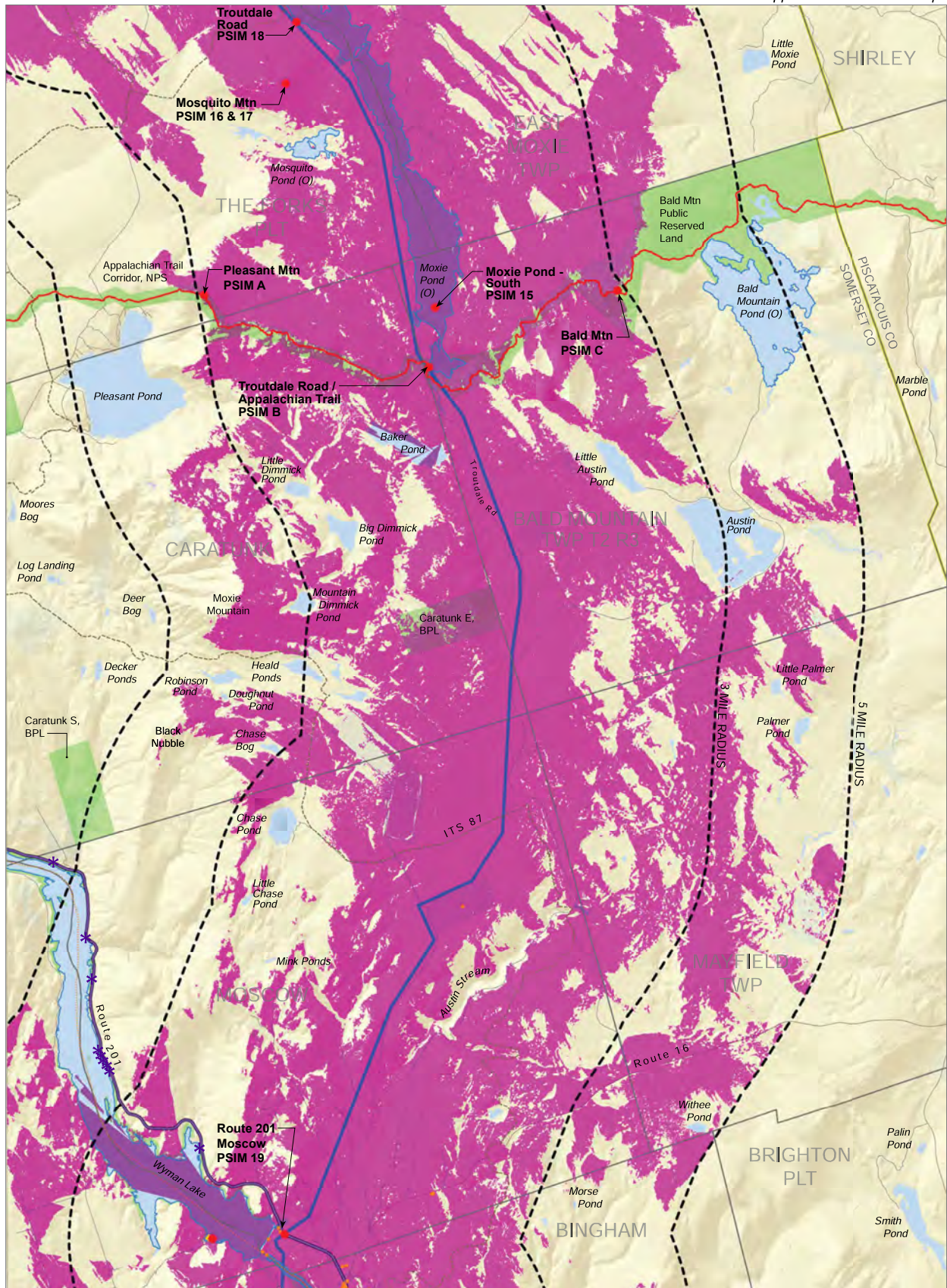




Appendix C: Viewshed Maps

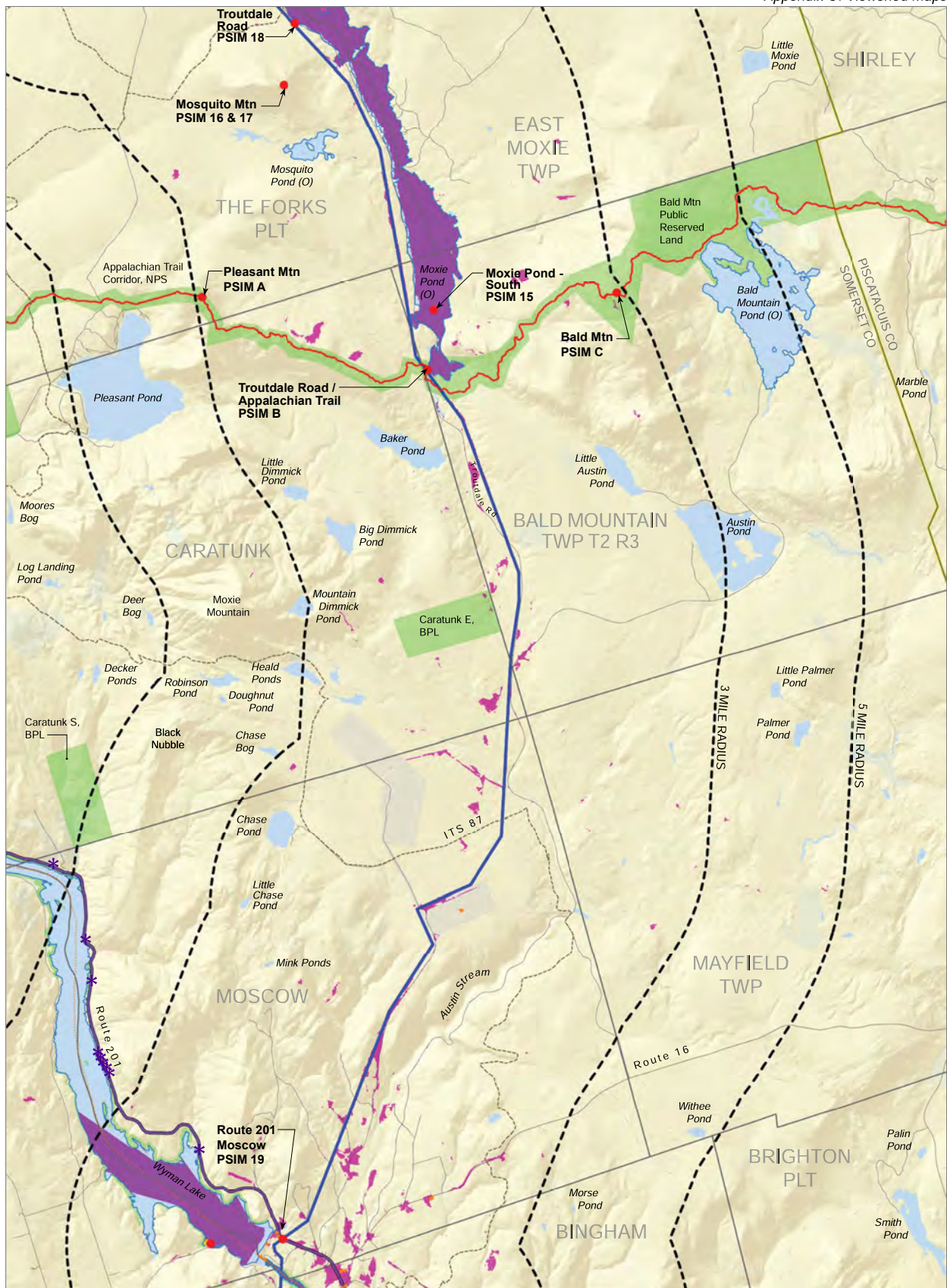


Appendix C: Viewshed Maps

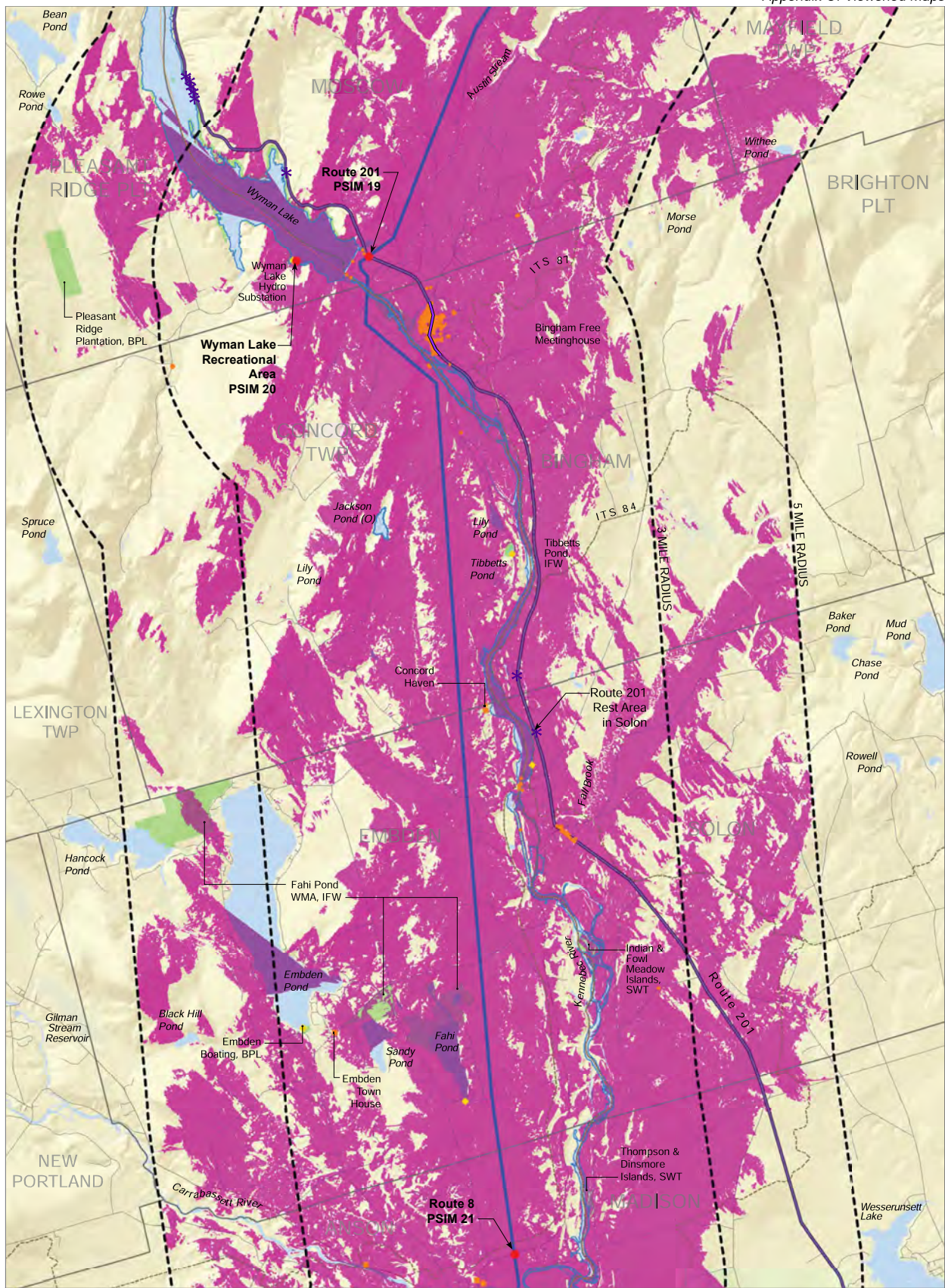






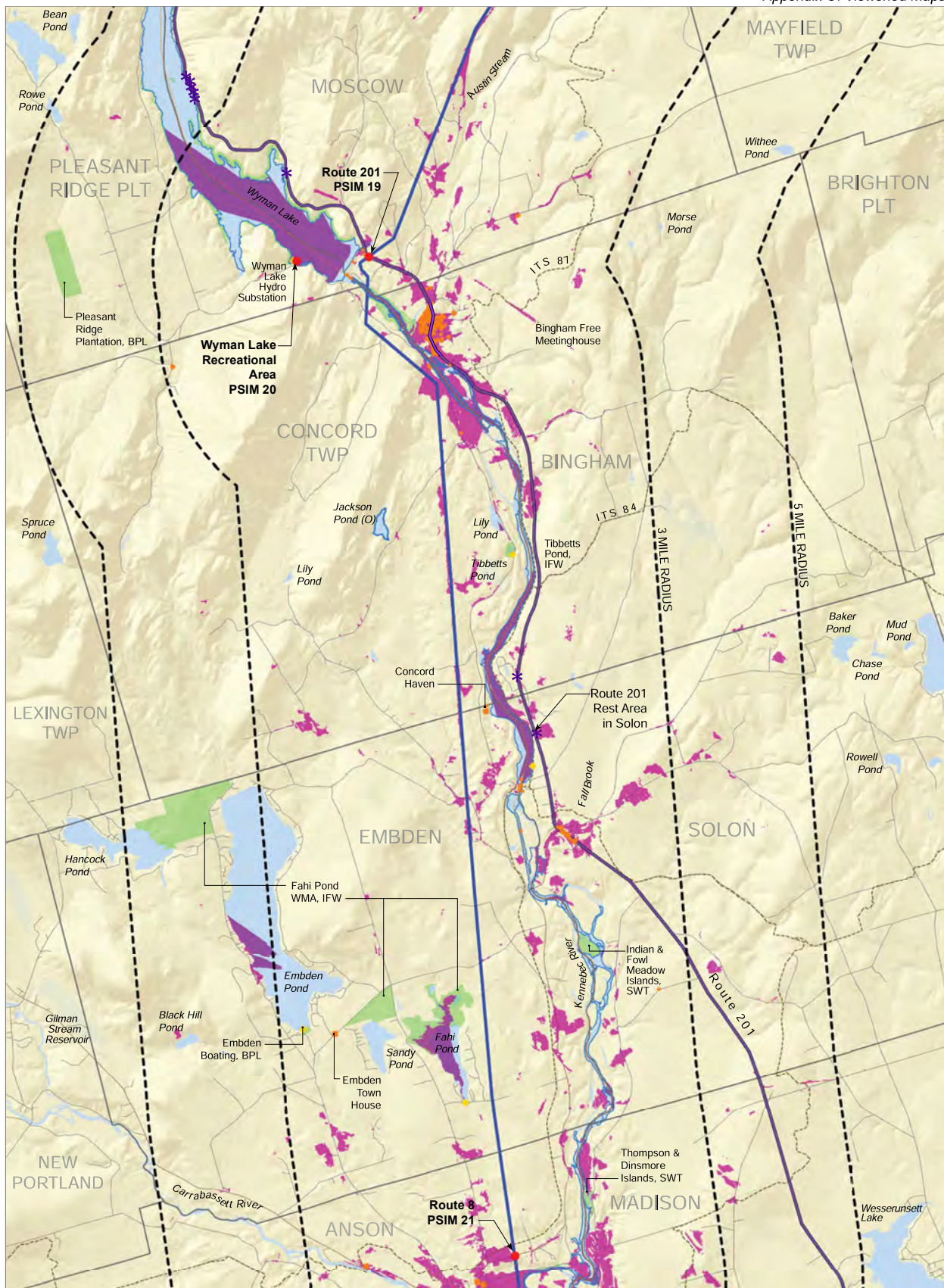
 <p>Map 4 TOPOGRAPHIC VIEWSHED</p>	<p>LEGEND</p> <ul style="list-style-type: none"> ■ New HVDC Corridor ■ Co-located HVDC Corridor ■ Sections 62 & 64 Rebuild ■ Co-located 345 KV Corridor — Municipal Boundaries — County Boundaries ■ Conservation Land - Public Access ■ Conservation Land - Restricted Access ■ Conservation Land-Municipal ◆ Boat Launch ● Structures eligible for National Register of Historic Places ■ Structures on National Register of Historic Places — Appalachian Trail — Arnold's Trail — ITS - Interconnected Trail System — Old Canada Road National Scenic Byway * Scenic Byway Pull-Offs / Overlooks ■ Great ponds (rated as "Outstanding" or "Significant"), scenic rivers and streams ● Photosimulation Location 	<p>VISIBILITY</p> <p>■ Area of potential project visibility where any portion of any structure may be visible within 5 miles.</p> <p>NOTES</p> <p>This viewshed map:</p> <ul style="list-style-type: none"> ● Accounts for the screening effects of topography only. ● Shows where the viewer may see any portion of a transmission structure. <p>Potential transmission line visibility needs to be confirmed with field investigations and other visualization techniques. See Report.</p>	<p>MAP INDEX</p>  <p>1 MILE</p> <p>tjd&a</p> <p>CENTRAL MAINE POWER</p> <p>September 27, 2017</p> <p>Page 8 of 25</p>
--	--	---	--





	<p>LEGEND</p> <ul style="list-style-type: none"> ■ New HVDC Corridor ■ Co-located HVDC Corridor ■ Sections 62 & 64 Rebuild ■ Co-located 345 KV Corridor — Municipal Boundaries — County Boundaries ■ Conservation Land - Public Access ■ Conservation Land - Restricted Access ■ Conservation Land - Municipal ■ Boat Launch ● Structures eligible for National Register of Historic Places ■ Structures on National Register of Historic Places — Appalachian Trail — Arnold's Trail — ITS - Interconnected Trail System — Old Canada Road National Scenic Byway * Scenic Byway Pull-Offs / Overlooks ■ Great ponds (rated as "Outstanding" or "Significant"), scenic rivers and streams ● Photosimulation Location 	<p>VISIBILITY</p> <ul style="list-style-type: none"> ■ Area of potential project visibility where any portion of any structure may be visible within 5 miles. <p>NOTES</p> <p>This viewshed map:</p> <ul style="list-style-type: none"> • Accounts for the screening effects of topography as well as 8 types of existing vegetation. Landcover data from Maine OGIS. The heights for the forest cover types are as follows. • Deciduous: 40' • Forested Wetland: 20' • Evergreen: 40' • Light Partial Cut: 40' • Mixed: 40' • Heavy Partial Cut: 40' • Scrub Shrub: 10' • Forest Regeneration: 20' <p>• Shows where the viewer may see any portion of a transmission structure.</p> <p>Potential transmission line visibility needs to be confirmed with field investigations and other visualization techniques. See Report.</p>	<p>MAP INDEX</p> <p>LEGEND</p> <ul style="list-style-type: none"> ■ 1 MILE tjd&a September 27, 2017 Page 9 of 25
--	--	--	--



 <p>Map 5 TOPOGRAPHIC VIEWSHED</p>	<p>LEGEND</p> <ul style="list-style-type: none"> ■ New HVDC Corridor ■ Co-located HVDC Corridor ■ Sections 62 & 64 Rebuild ■ Co-located 345 kV Corridor — Municipal Boundaries — County Boundaries ■ Conservation Land - Public Access ■ Conservation Land - Restricted Access ■ Conservation Land-Municipal ◆ Boat Launch ● Structures eligible for National Register of Historic Places ■ Structures on National Register of Historic Places ■ Appalachian Trail — Arnold's Trail — ITS - Interconnected Trail System — Old Canada Road National Scenic Byway * Scenic Byway Pull-Outs / Overlooks ■ Great ponds (rated as "Outstanding" or "Significant"), scenic rivers and streams ● Photosimulation Location 	<p>VISIBILITY</p> <ul style="list-style-type: none"> ■ Area of potential project visibility where any portion of any structure may be visible within 5 miles. <p>NOTES</p> <p>This viewshed map:</p> <ul style="list-style-type: none"> • Accounts for the screening effects of topography only. • Shows where the viewer may see any portion of a transmission structure. <p>Potential transmission line visibility needs to be confirmed with field investigations and other visualization techniques. See Report.</p>	<p>MAP INDEX</p>  <p>LEGEND</p> <ul style="list-style-type: none"> ■ 5 <p>NOTES</p> <ul style="list-style-type: none"> • Accounts for the screening effects of topography only. • Shows where the viewer may see any portion of a transmission structure. <p>Potential transmission line visibility needs to be confirmed with field investigations and other visualization techniques. See Report.</p>
--	--	---	---



 <h2>Map 5</h2> <p>LANDCOVER VIEWSHED</p>	<p>LEGEND</p> <ul style="list-style-type: none"> ■ New HVDC Corridor ■ Co-located HVDC Corridor ■ Sections 62 & 64 Rebuild ■ Co-located 345 KV Corridor — Municipal Boundaries — County Boundaries ■ Conservation Land - Public Access ■ Conservation Land - Restricted Access ■ Conservation Land - Municipal ■ Boat Launch ● Structures eligible for National Register of Historic Places ■ Structures on National Register of Historic Places — Appalachian Trail — Arnold's Trail — ITS - Interconnected Trail System — Old Canada Road National Scenic Byway * Scenic Byway Pull-Offs / Overlooks ■ Great ponds (rated as "Outstanding" or "Significant"), scenic rivers and streams ● Photosimulation Location 	<p>VISIBILITY</p> <ul style="list-style-type: none"> ■ Area of potential project visibility where any portion of any structure may be visible within 5 miles. <p>NOTES</p> <p>This viewshed map:</p> <ul style="list-style-type: none"> • Accounts for the screening effects of topography as well as 8 types of existing vegetation. Landcover data from Maine GIS. The heights for the forest cover types are as follows. • Deciduous: 40' • Forested Wetland: 20' • Evergreen: 40' • Light Partial Cut: 40' • Mixed: 40' • Heavy Partial Cut: 40' • Scrub Shrub: 10' • Forest Regeneration: 20' <p>• Shows where the viewer may see any portion of a transmission structure.</p> <p>Potential transmission line visibility needs to be confirmed with field investigations and other visualization techniques. See Report.</p>	<p>MAP INDEX</p>  <p>LEGEND</p> <ul style="list-style-type: none"> ■ 5 <p>NOTES</p> <ul style="list-style-type: none"> • Accounts for the screening effects of topography as well as 8 types of existing vegetation. Landcover data from Maine GIS. The heights for the forest cover types are as follows. • Deciduous: 40' • Forested Wetland: 20' • Evergreen: 40' • Light Partial Cut: 40' • Mixed: 40' • Heavy Partial Cut: 40' • Scrub Shrub: 10' • Forest Regeneration: 20' <p>• Shows where the viewer may see any portion of a transmission structure.</p> <p>Potential transmission line visibility needs to be confirmed with field investigations and other visualization techniques. See Report.</p>
---	--	---	---

NORTH



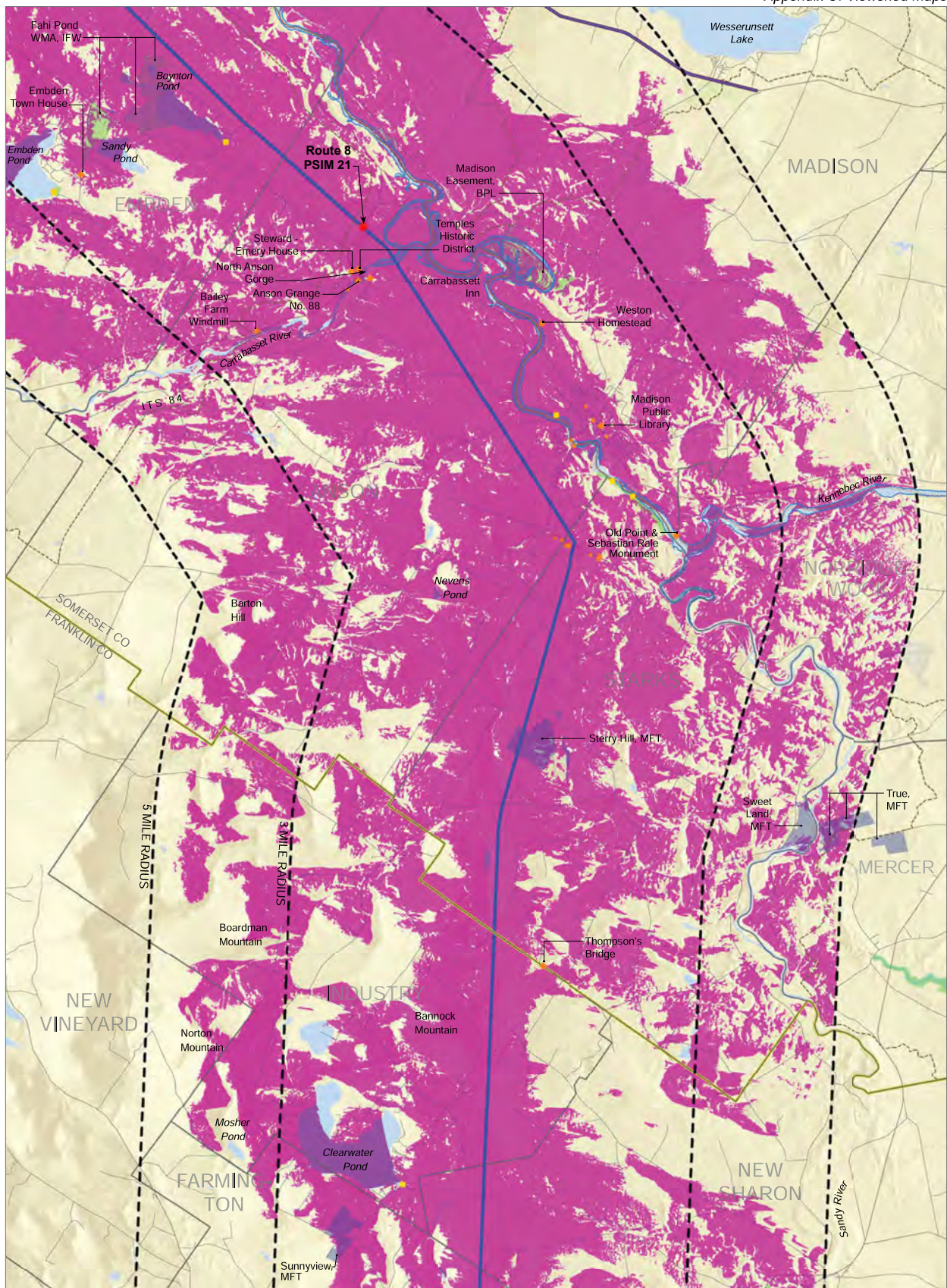
1 MILE




tjd&a

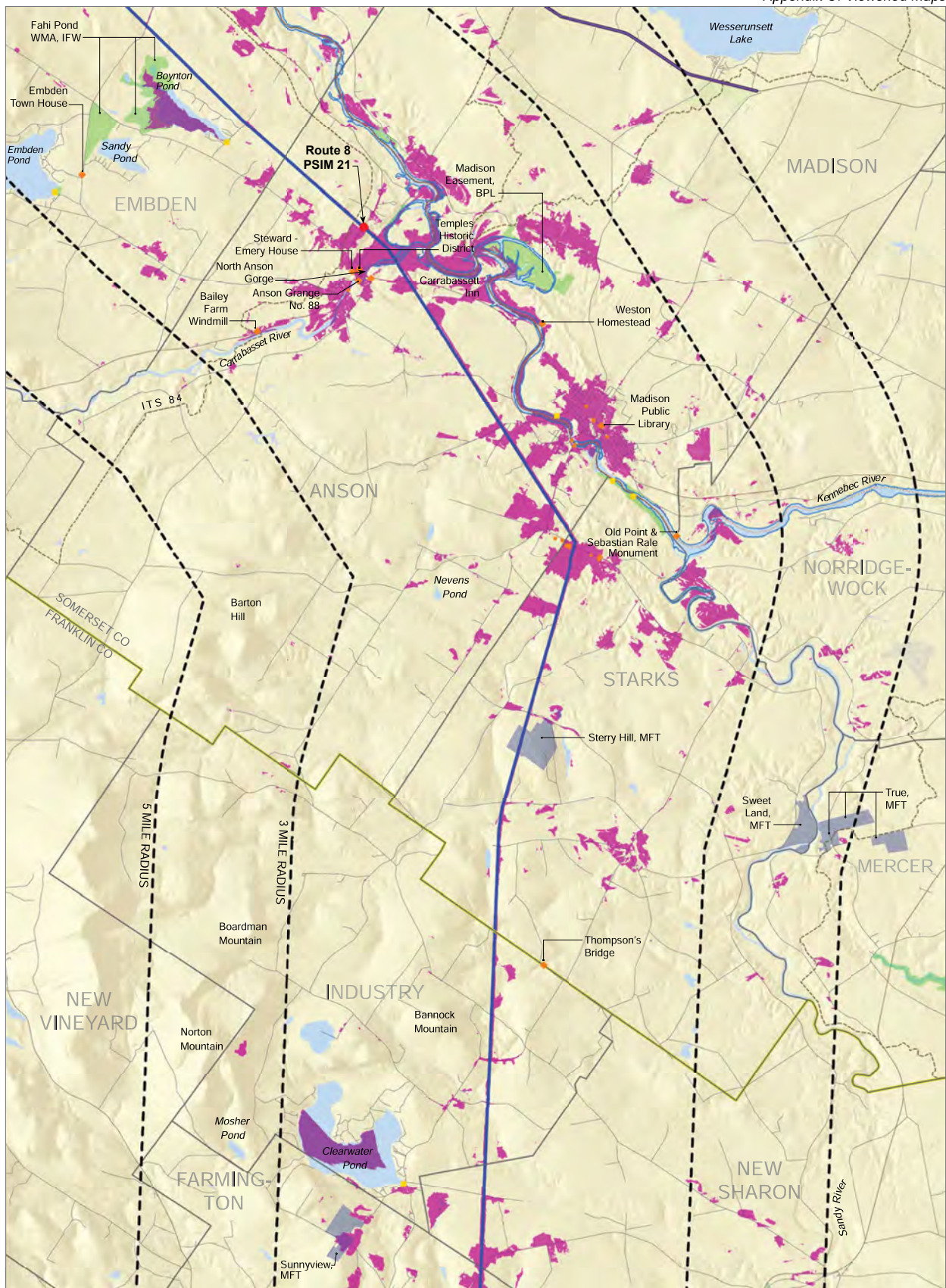


September 27, 2017

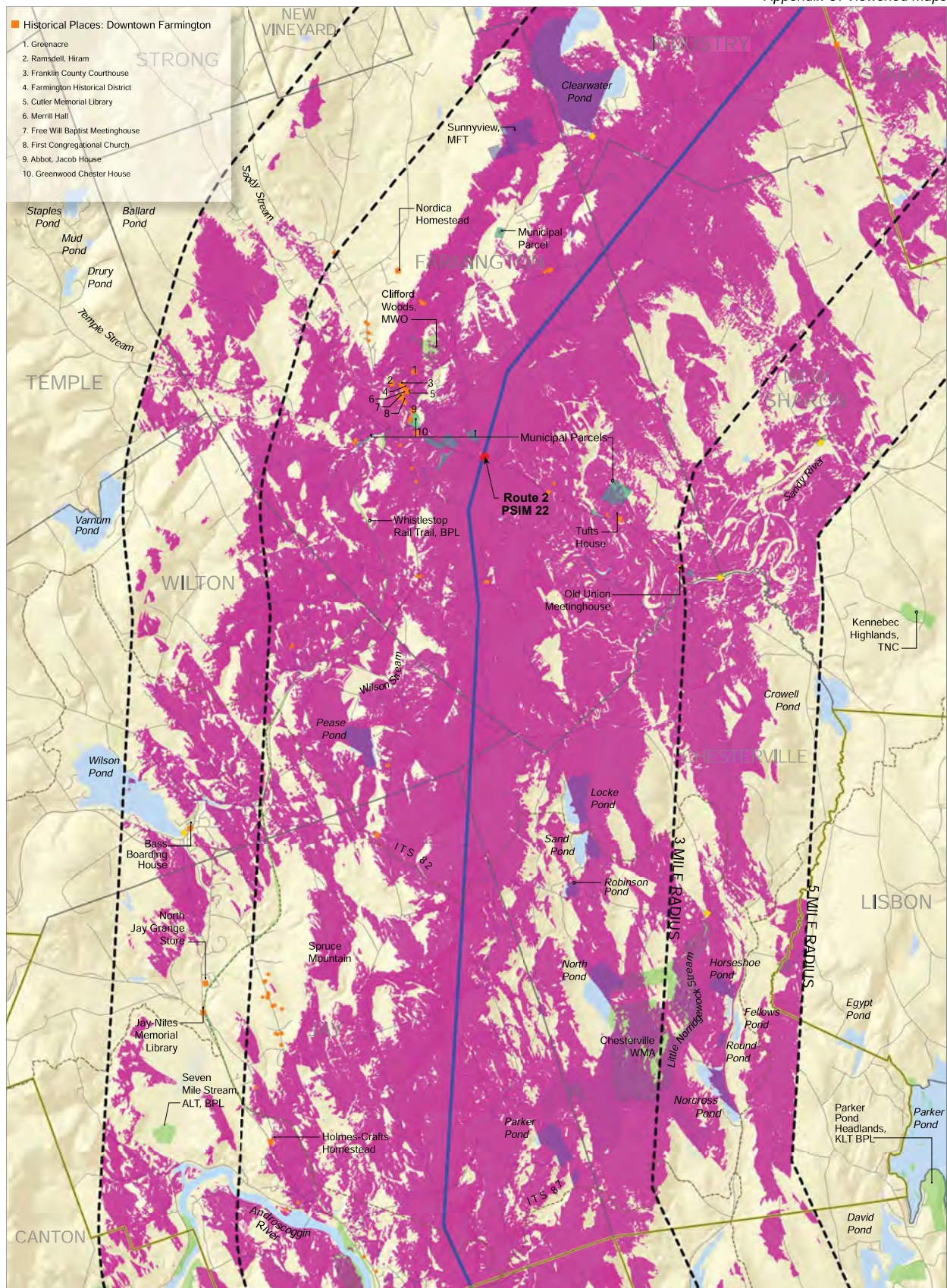
Page
11 of 25



 <p>Map 6 TOPOGRAPHIC VIEWSHED</p>	<p>LEGEND</p> <ul style="list-style-type: none"> ■ New HVDC Corridor ■ Co-located HVDC Corridor ■ Sections 62 & 64 Rebuild ■ Co-located 345 kV Corridor — Municipal Boundaries — County Boundaries ■ Conservation Land - Public Access ■ Conservation Land - Restricted Access ■ Conservation Land-Municipal ■ Boat Launch ● Structures eligible for National Register of Historic Places ■ Structures on National Register of Historic Places ■ Appalachian Trail — Arnold's Trail — ITS - Interconnected Trail System — Old Canada Road National Scenic Byway * Scenic Byway Pull-Offs / Overlooks ■ Great ponds (rated as "Outstanding" or "Significant"), scenic rivers and streams ● Photosimulation Location 	<p>VISIBILITY</p> <ul style="list-style-type: none"> ■ Area of potential project visibility where any portion of any structure may be visible within 5 miles. <p>NOTES</p> <p>This viewshed map:</p> <ul style="list-style-type: none"> • Accounts for the screening effects of topography only. • Shows where the viewer may see any portion of a transmission structure. <p>Potential transmission line visibility needs to be confirmed with field investigations and other visualization techniques. See Report.</p>	<p>MAP INDEX</p>  <p>1 MILE</p>  <p>tjd&a</p> <p>CENTRAL MAINE POWER</p> <p>September 27, 2017</p> <p>Page 12 of 25</p>
--	---	--	---



	<p>LEGEND</p> <ul style="list-style-type: none"> ■ New HVDC Corridor ■ Co-located HVDC Corridor ■ Sections 62 & 64 Rebuild ■ Co-located 345 KV Corridor — Municipal Boundaries — County Boundaries ■ Conservation Land - Public Access ■ Conservation Land - Restricted Access ■ Conservation Land - Municipal ■ Boat Launch ● Structures eligible for National Register of Historic Places ● Structures on National Register of Historic Places — Appalachian Trail — Arnold's Trail — ITS - Interconnected Trail System — Old Canada Road National Scenic Byway — Scenic Byway Pull-Outs / Overlooks ■ Great ponds (rated as "Outstanding" or "Significant"), scenic rivers and streams ● Photosimulation Location 	<p>VISIBILITY</p> <p>■ Area of potential project visibility where any portion of any structure may be visible within 5 miles.</p> <p>NOTES</p> <p>This viewshed map:</p> <ul style="list-style-type: none"> • Accounts for the screening effects of topography as well as 8 types of existing vegetation. Landcover data from Maine OGIS. The heights for the forest cover types are as follows. • Deciduous: 40' • Forested Wetland: 20' • Evergreen: 40' • Light Partial Cut: 40' • Mixed: 40' • Heavy Partial Cut: 40' • Scrub Shrub: 10' • Forest Regeneration: 20' <p>• Shows where the viewer may see any portion of a transmission structure.</p> <p>Potential transmission line visibility needs to be confirmed with field investigations and other visualization techniques. See Report.</p>	<p>MAP INDEX</p> <p>1 MILE</p> <p>tjd&a</p> <p>CENTRAL MAINE POWER</p> <p>September 27, 2017</p> <p>Page 13 of 25</p>
--	---	---	---



- Historical Places: Downtown Farmington**
1. Greenacre
 2. Ramsdell, Hiram
 3. Franklin County Courthouse
 4. Farmington Historical District
 5. Cutler Memorial Library
 6. Merrill Hall
 7. Free Will Baptist Meetinghouse
 8. First Congregational Church
 9. Abbot, Jacob House
 10. Greenwood Chester House

Map 7
TOPOGRAPHIC
VIEWSHED

- LEGEND**
- New HVDC Corridor
 - Co-located HVDC Corridor
 - Sections 62 & 64 Rebuild
 - Co-located 345 KV Corridor
 - Municipal Boundaries
 - County Boundaries
 - Conservation Land - Public Access
 - Conservation Land - Restricted Access
 - Conservation Land-Municipal
 - Boat Launch
 - Structures eligible for National Register of Historic Places
 - Structures on National Register of Historic Places
 - Appalachian Trail
 - Arnold's Trail
 - ITS - Interconnected Trail System
 - Old Canada Road National Scenic Byway
 - Scenic Byway Pull-Offs / Overlooks
 - Great ponds (rated as "Outstanding" or "Significant"), scenic rivers and streams
 - Photosimulation Location

VISIBILITY

- Area of potential project visibility where any portion of any structure may be visible within 5 miles.

NOTES

This viewshed map:

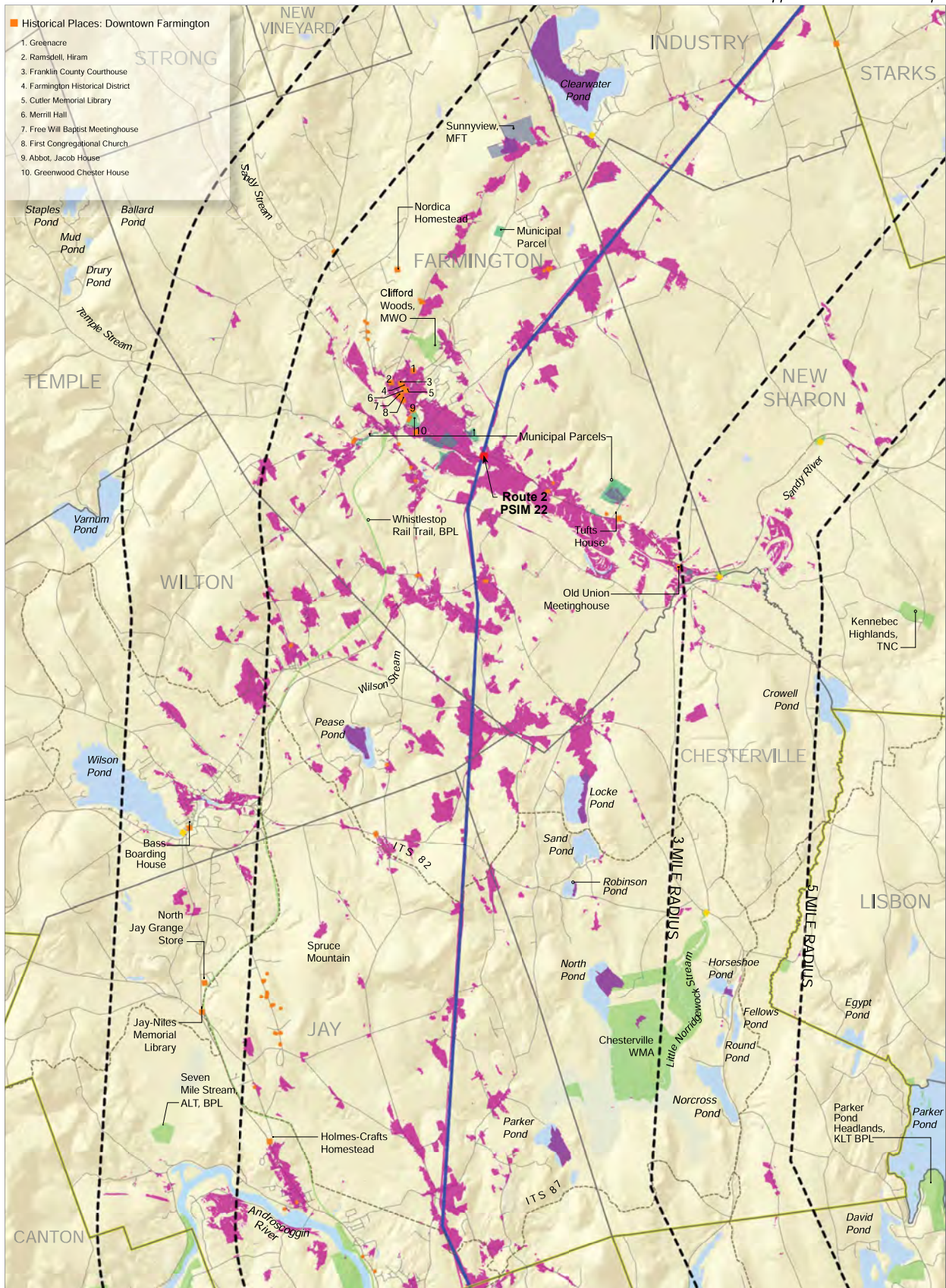
- Accounts for the screening effects of topography only.
- Shows where the viewer may see any portion of a transmission structure.

Potential transmission line visibility needs to be confirmed with field investigations and other visualization techniques. See Report.

MAP INDEX

LEGEND

- North Arrow
- 1 MILE
- tjd&a
- CENTRAL MAINE POWER
- September 27, 2017
- Page 14 of 25



- Historical Places: Downtown Farmington**
1. Greenacre
 2. Ramsdell, Hiram
 3. Franklin County Courthouse
 4. Farmington Historical District
 5. Cutler Memorial Library
 6. Merrill Hall
 7. Free Will Baptist Meetinghouse
 8. First Congregational Church
 9. Abbot, Jacob House
 10. Greenwood Chester House

Map 7
LANDCOVER
VIEWSHED

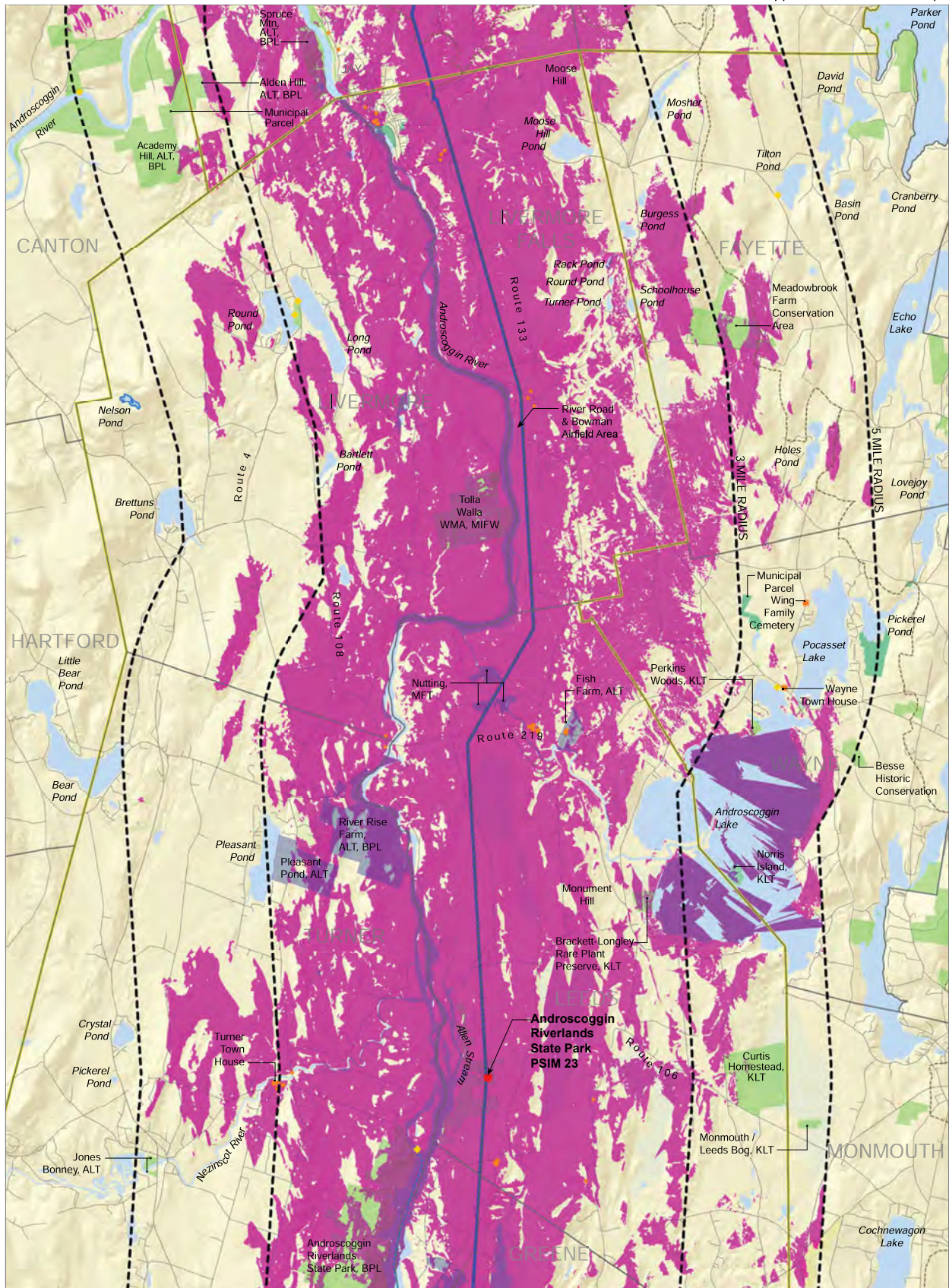
- LEGEND**
- New HVDC Corridor
 - Co-located HVDC Corridor
 - Sections 62 & 64 Rebuild
 - Co-located 345 KV Corridor
 - Municipal Boundaries
 - County Boundaries
 - Conservation Land - Public Access
 - Conservation Land - Restricted Access
 - Conservation Land - Municipal
 - Boat Launch
 - Structures eligible for National Register of Historic Places
 - Structures on National Register of Historic Places
 - Appalachian Trail
 - Arnold's Trail
 - ITS - Interconnected Trail System
 - Old Canada Road National Scenic Byway
 - Scenic Byway Pull-Offs / Overlooks
 - Great ponds (rated as "Outstanding" or "Significant"), scenic rivers and streams
 - Photosimulation Location






- VISIBILITY**
- Area of potential project visibility where any portion of any structure may be visible within 5 miles.
- NOTES**
- This viewshed map:**
- Accounts for the screening effects of topography as well as 8 types of existing vegetation. Landcover data from Maine GIS. The heights for the forest cover types are as follows.
 - Deciduous: 40' • Forested Wetland: 20'
 - Evergreen: 40' • Light Partial Cut: 40'
 - Mixed: 40' • Heavy Partial Cut: 40'
 - Scrub Shrub: 10' • Forest Regeneration: 20'
 - Shows where the viewer may see any portion of a transmission structure.
 - Potential transmission line visibility needs to be confirmed with field investigations and other visualization techniques. See Report.

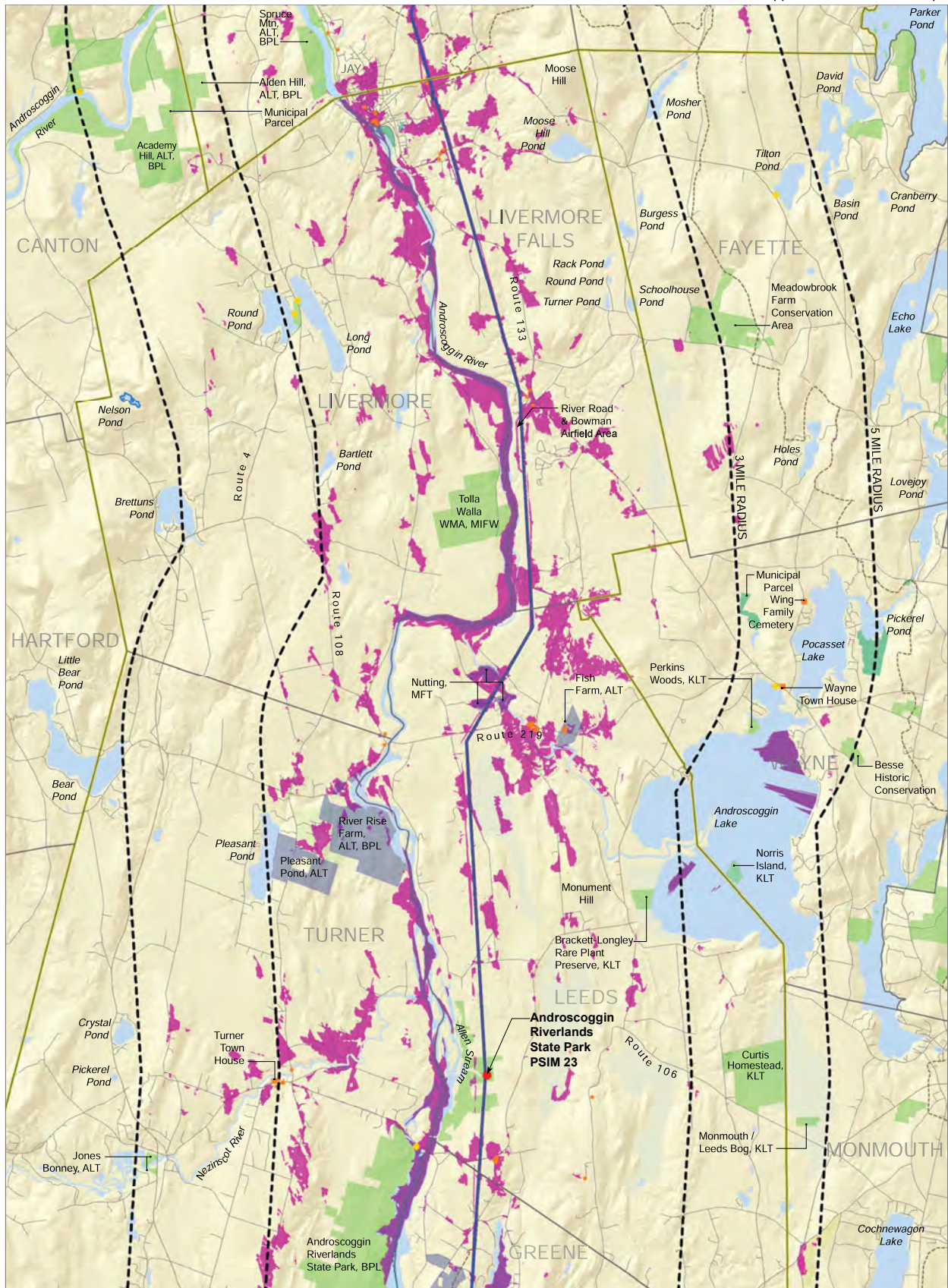
MAP INDEX

LEGEND

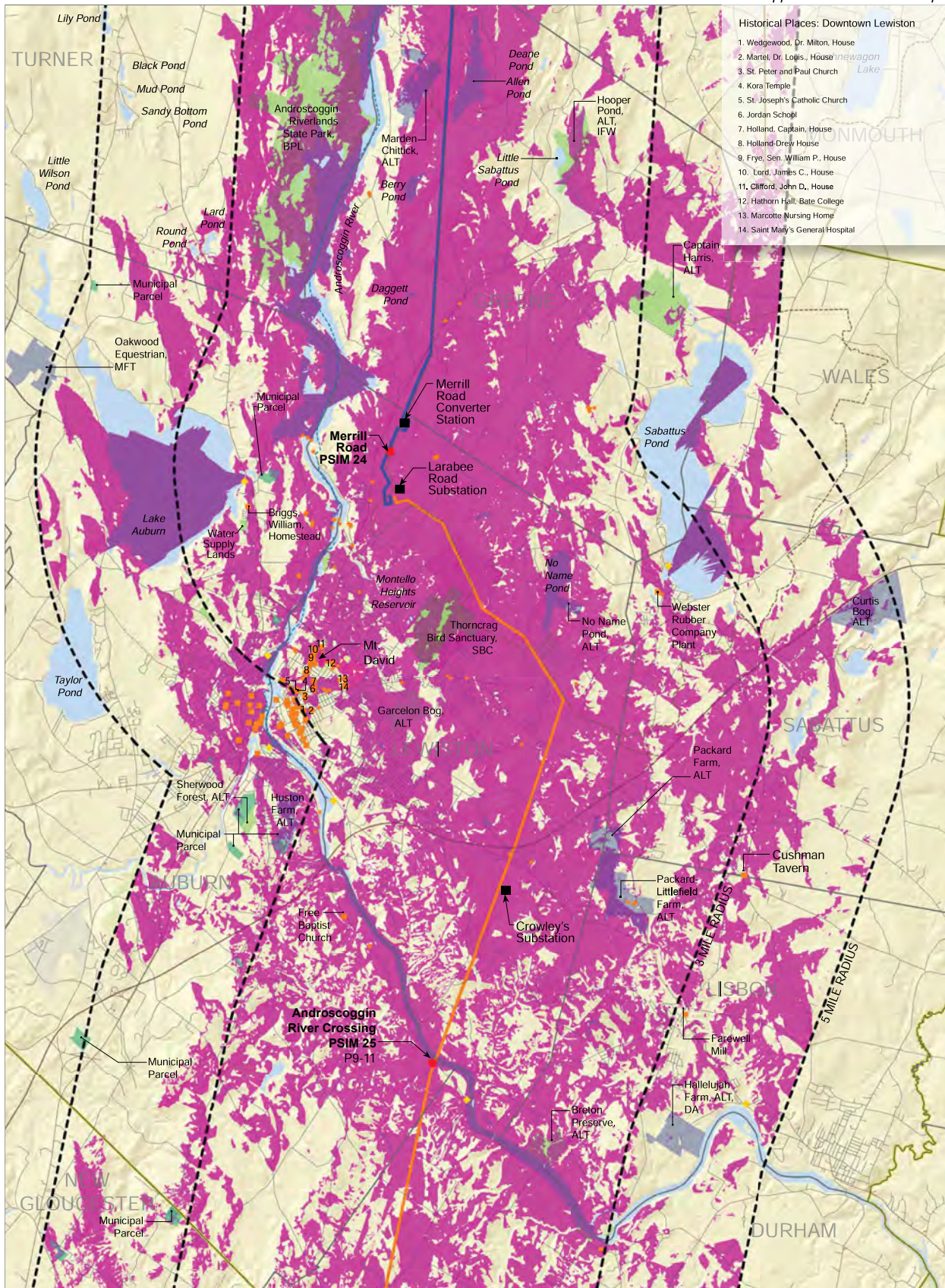
- NORTH
- 1 MILE
- tjd&a
- CENTRAL MAINE POWER
- September 27, 2017
- Page 15 of 25



 <h2>Map 8</h2> <p>TOPOGRAPHIC VIEWSHED</p>	<p>LEGEND</p> <ul style="list-style-type: none"> ■ New HVDC Corridor ■ Co-located HVDC Corridor ■ Sections 62 & 64 Rebuild ■ Co-located 345 KV Corridor — Municipal Boundaries — County Boundaries ■ Conservation Land - Public Access ■ Conservation Land - Restricted Access ■ Conservation Land-Municipal ● Boat Launch ● Structures eligible for National Register of Historic Places ■ Structures on National Register of Historic Places ■ Appalachian Trail — Arnold's Trail — ITS - Interconnected Trail System — Old Canada Road National Scenic Byway * Scenic Byway Pull-Offs / Overlooks ■ Great ponds (rated as "Outstanding" or "Significant"), scenic rivers and streams ● Photosimulation Location 	<p>VISIBILITY</p> <ul style="list-style-type: none"> ■ Area of potential project visibility where any portion of any structure may be visible within 5 miles. <p>NOTES</p> <p>This viewshed map:</p> <ul style="list-style-type: none"> ● Accounts for the screening effects of topography only. ● Shows where the viewer may see any portion of a transmission structure. <p>Potential transmission line visibility needs to be confirmed with field investigations and other visualization techniques. See Report.</p>	<p>MAP INDEX</p>  <p>LEGEND</p> <ul style="list-style-type: none">  NORTH — 1 MILE  tjd&a  CENTRAL MAINE POWER September 27, 2017 Page 16 of 25
---	---	--	--

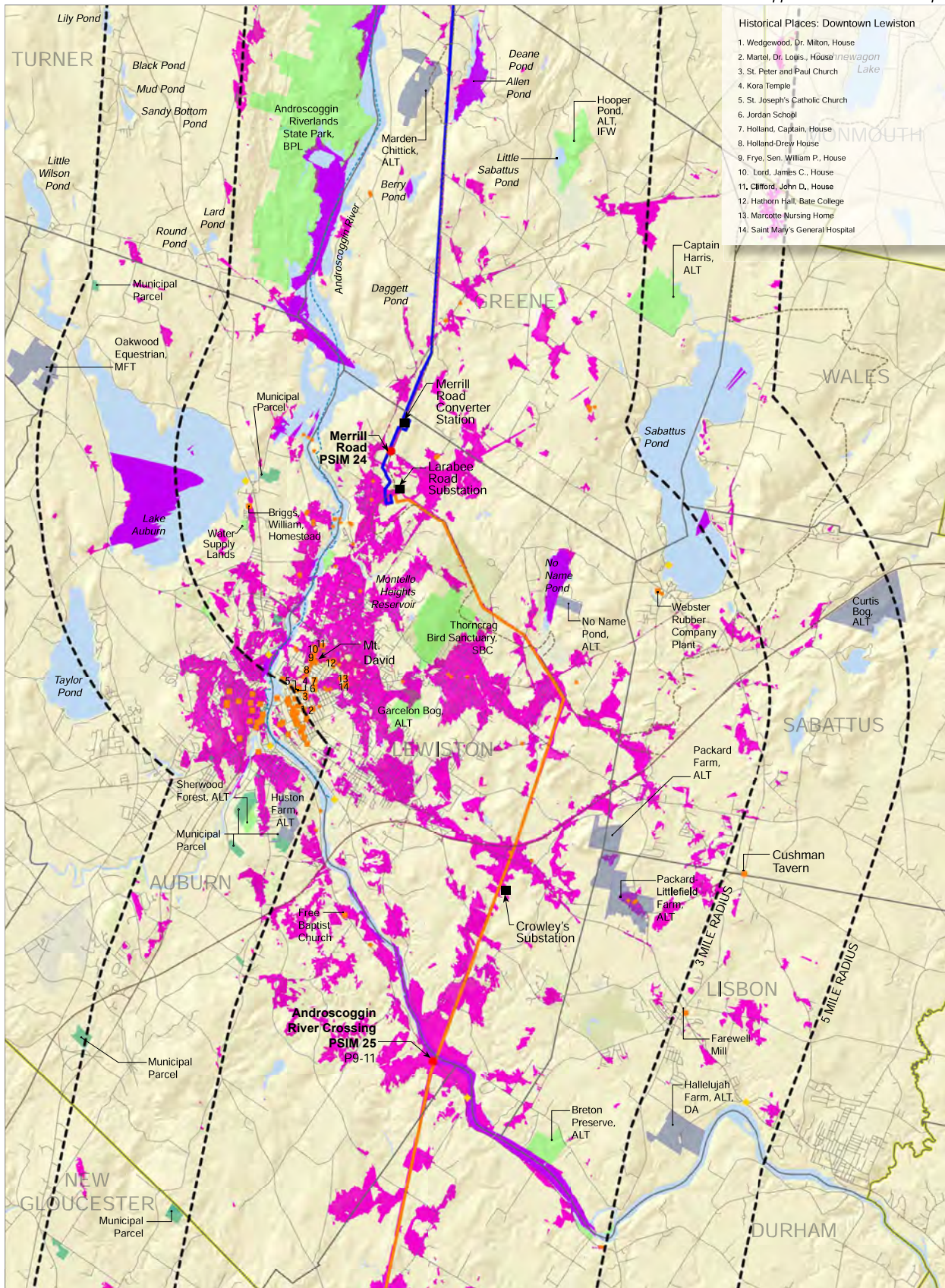


	<p>LEGEND</p> <ul style="list-style-type: none"> ■ New HVDC Corridor ■ Co-located HVDC Corridor ■ Sections 62 & 64 Rebuild ■ Co-located 345 KV Corridor — Municipal Boundaries — County Boundaries ■ Conservation Land - Public Access ■ Conservation Land - Restricted Access ■ Conservation Land - Municipal ◆ Boat Launch ● Structures eligible for National Register of Historic Places ■ Structures on National Register of Historic Places — Appalachian Trail — Arnold's Trail — ITS - Interconnected Trail System — Old Canada Road National Scenic Byway — Scenic Byway Pull-Offs / Overlooks ■ Great ponds (rated as "Outstanding" or "Significant"), scenic rivers and streams ● Photosimulation Location 	<p>VISIBILITY</p> <ul style="list-style-type: none"> ■ Area of potential project visibility where any portion of any structure may be visible within 5 miles. <p>NOTES</p> <p>This viewshed map:</p> <ul style="list-style-type: none"> • Accounts for the screening effects of topography as well as 8 types of existing vegetation. Landcover data from Maine OGIS. The heights for the forest cover types are as follows. • Deciduous: 40' • Forested Wetland: 20' • Evergreen: 40' • Light Partial Cut: 40' • Mixed: 40' • Heavy Partial Cut: 40' • Scrub Shrub: 10' • Forest Regeneration: 20' <p>• Shows where the viewer may see any portion of a transmission structure.</p> <p>Potential transmission line visibility needs to be confirmed with field investigations and other visualization techniques. See Report.</p>	<p>MAP INDEX</p> <p>LEGEND</p> <ul style="list-style-type: none"> 1 MILE September 27, 2017 Page 17 of 25
--	---	---	--



- Historical Places: Downtown Lewiston**
1. Wedgwood, Dr. Milton, House
 2. Martel, Dr. Louis, House
 3. St. Peter and Paul Church
 4. Korá Temple
 5. St. Joseph's Catholic Church
 6. Jordan School
 7. Holland, Captain, House
 8. Holland-Drex House
 9. Frye, Sen. William P., House
 10. Lord, James C., House
 11. Clifford, John D., House
 12. Hathorn Hall, Bates College
 13. Marcotte Nursing Home
 14. Saint Mary's General Hospital

<p>Map 9 TOPOGRAPHIC VIEWSHED</p>	<p>LEGEND</p> <ul style="list-style-type: none"> New HVDC Corridor Co-located HVDC Corridor Sections 62 & 64 Rebuild Co-located 345 KV Corridor Municipal Boundaries County Boundaries Conservation Land - Public Access Conservation Land - Restricted Access Conservation Land - Municipal Boat Launch Structures eligible for National Register of Historic Places Structures on National Register of Historic Places Appalachian Trail Arnold's Trail ITS - Interconnected Trail System Old Canada Road National Scenic Byway Scenic Byway Pull-Offs / Overlooks Great ponds (rated as "Outstanding" or "Significant"), scenic rivers and streams Photosimulation Location 	<p>VISIBILITY</p> <ul style="list-style-type: none"> Area of potential project visibility where any portion of any structure may be visible within 5 miles. <p>NOTES</p> <p>This viewshed map:</p> <ul style="list-style-type: none"> Accounts for the screening effects of topography only. Shows where the viewer may see any portion of a transmission structure. <p>Potential transmission line visibility needs to be confirmed with field investigations and other visualization techniques. See Report.</p>	<p>MAP INDEX</p> <p>LEGEND</p> <ul style="list-style-type: none"> North Arrow 1 MILE tjd&a CENTRAL MAINE POWER September 27, 2017 Page 18 of 25
--	--	--	---



- Historical Places: Downtown Lewiston**
1. Wedgewood, Dr. Milton, House
 2. Martel, Dr. Louis, House
 3. St. Peter and Paul Church
 4. Kora Temple
 5. St. Joseph's Catholic Church
 6. Jordan School
 7. Holland, Captain, House
 8. Holland-Drew House
 9. Frye, Sen. William P., House
 10. Lord, James C., House
 11. Clifford, John D., House
 12. Hathorn Hall, Bates College
 13. Marcotte Nursing Home
 14. Saint Mary's General Hospital

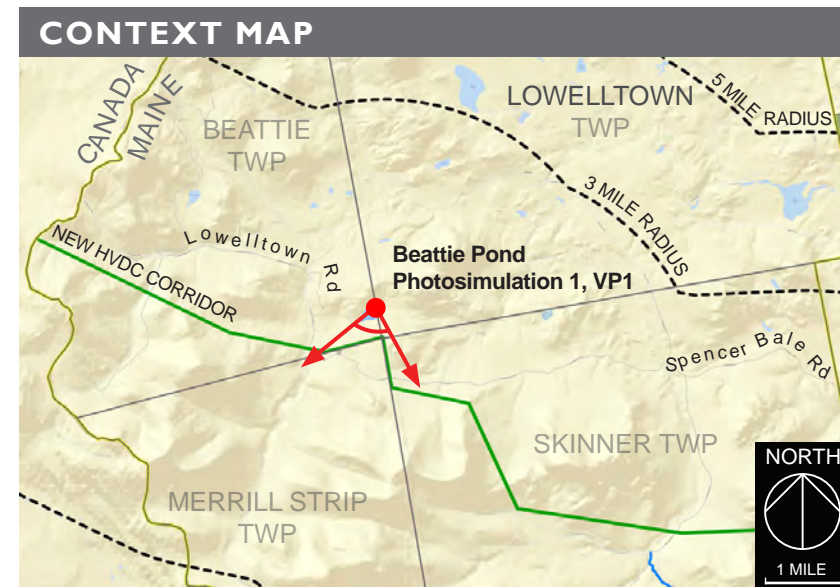
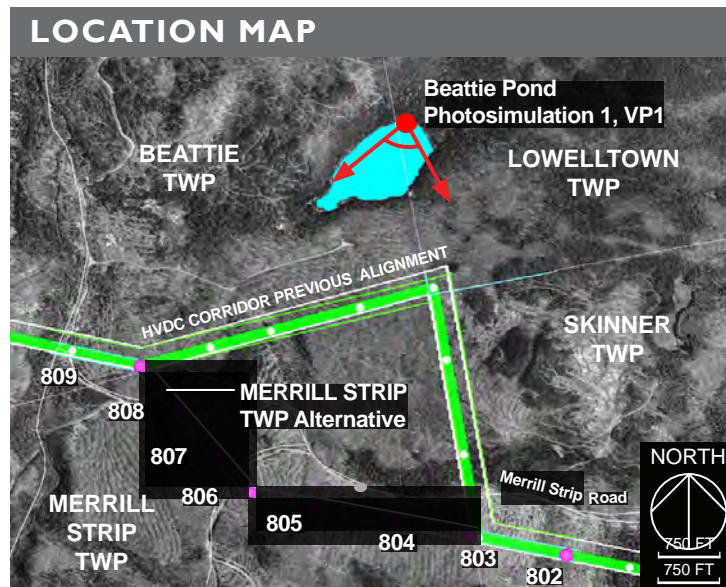
<p>Map 9 LANDCOVER VIEWSHED</p>	<p>LEGEND</p> <ul style="list-style-type: none"> New HVDC Corridor Co-located HVDC Corridor Sections 62 & 64 Rebuild Co-located 345 KV Corridor Municipal Boundaries County Boundaries Conservation Land - Public Access Conservation Land - Restricted Access Conservation Land - Municipal Boat Launch Structures eligible for National Register of Historic Places Structures on National Register of Historic Places Appalachian Trail Arnold's Trail ITS - Interconnected Trail System Old Canada Road National Scenic Byway Scenic Byway Pull-Offs / Overlooks Great ponds (rated as "Outstanding" or "Significant"), scenic rivers and streams Photosimulation Location 	<p>VISIBILITY</p> <ul style="list-style-type: none"> Area of potential project visibility where any portion of any structure may be visible within 5 miles. <p>NOTES</p> <p>This viewshed map:</p> <ul style="list-style-type: none"> Accounts for the screening effects of topography as well as 8 types of existing vegetation. Landcover data from Maine GIS. The heights for the forest cover types are as follows. Deciduous: 40' • Forested Wetland: 20' Evergreen: 40' • Light Partial Cut: 40' Mixed: 40' • Heavy Partial Cut: 40' Scrub Shrub: 10' • Forest Regeneration: 20' <p>Shows where the viewer may see any portion of a transmission structure.</p> <p>Potential transmission line visibility needs to be confirmed with field investigations and other visualization techniques. See Report.</p>	<p>MAP INDEX</p> <p>LEGEND</p> <ul style="list-style-type: none"> North Arrow 1 MILE scale bar tjd&a logo CENTRAL MAINE POWER logo September 27, 2017 Page 19 of 25
--	--	--	---

PHOTOSIMULATION 1, VIEWPOINT 1: BEATTIE POND, LOWELLTOWN TWP



Conductors minimally visible near structure 809 - 0.91 miles from viewpoint

Photosimulation 1: Panoramic view looking southeast to southwest from the northern end of Beattie Pond toward the proposed HVDC transmission line. Beattie Pond is a Management Class 6, Remote Pond. No structures will be visible. Conductors and shield wires will be minimally visible through filtered views due to intervening vegetation. Existing topography and shoreline vegetation will screen the rest of the Project from view. Merrill Mountain is visible on the right side of the image. See Appendix B: Study Area Photographs for additional images.



TECHNICAL INFORMATION	
Typical Cross Section	Photograph Information



Existing Conditions 1B, Viewpoint 1: Normal view looking south from the northern end of Beattie Pond.

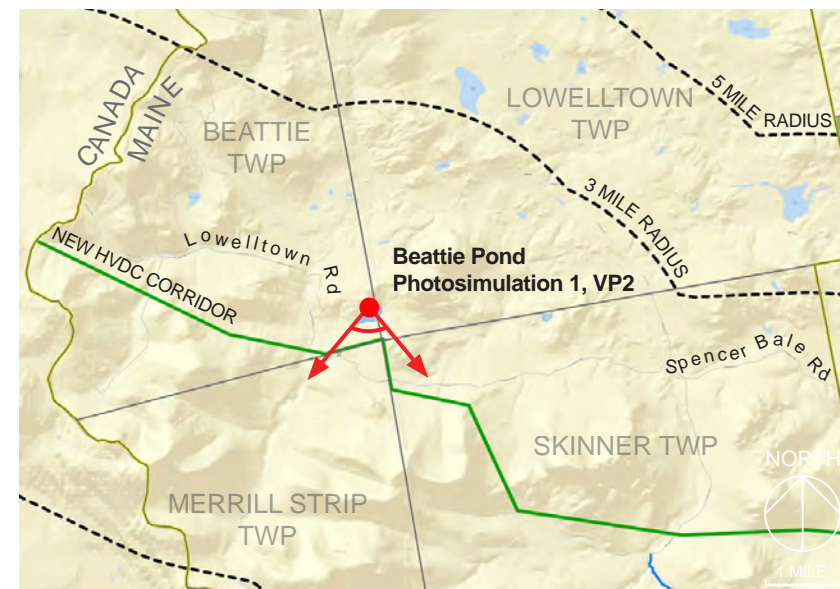
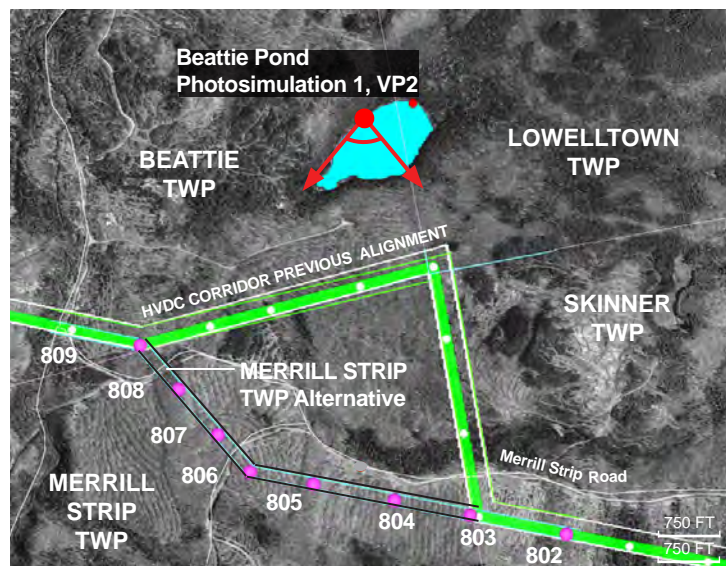


Photosimulation 1B, Viewpoint 1: Normal view looking southwest from the northern end of Beattie Pond toward the proposed HVDC transmission line. No structures will be visible. Conductors and shield wires will be minimally visible through filtered views due to intervening vegetation.

PHOTOSIMULATION 1, VIEWPOINT 2: BEATTIE POND, LOWELLTOWN TWP

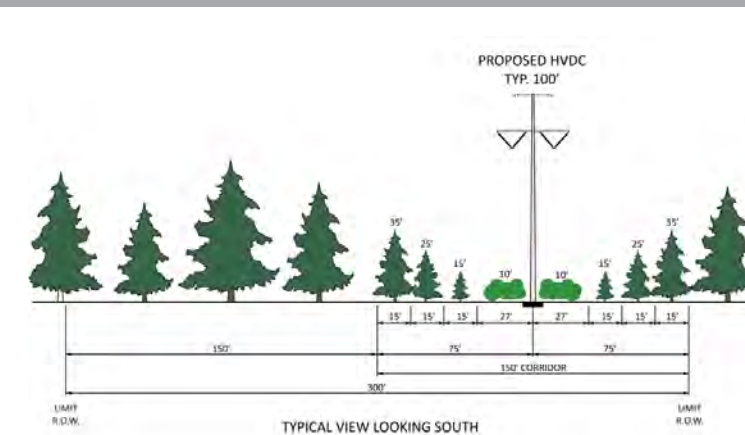


Photosimulation 1, Viewpoint 2: Panoramic view looking south to southwest near the northwestern shore of Beattie Pond toward the proposed HVDC transmission line. Beattie Pond is a Management Class 6, Remote Pond. Two structures will be visible from this viewpoint. Conductors and shield wires will be minimally visible through filtered views due to intervening vegetation. Existing topography and shoreline vegetation will screen the rest of the Project from view. See Appendix B: Study Area Photographs for additional images.



TECHNICAL INFORMATION

Typical Cross Section



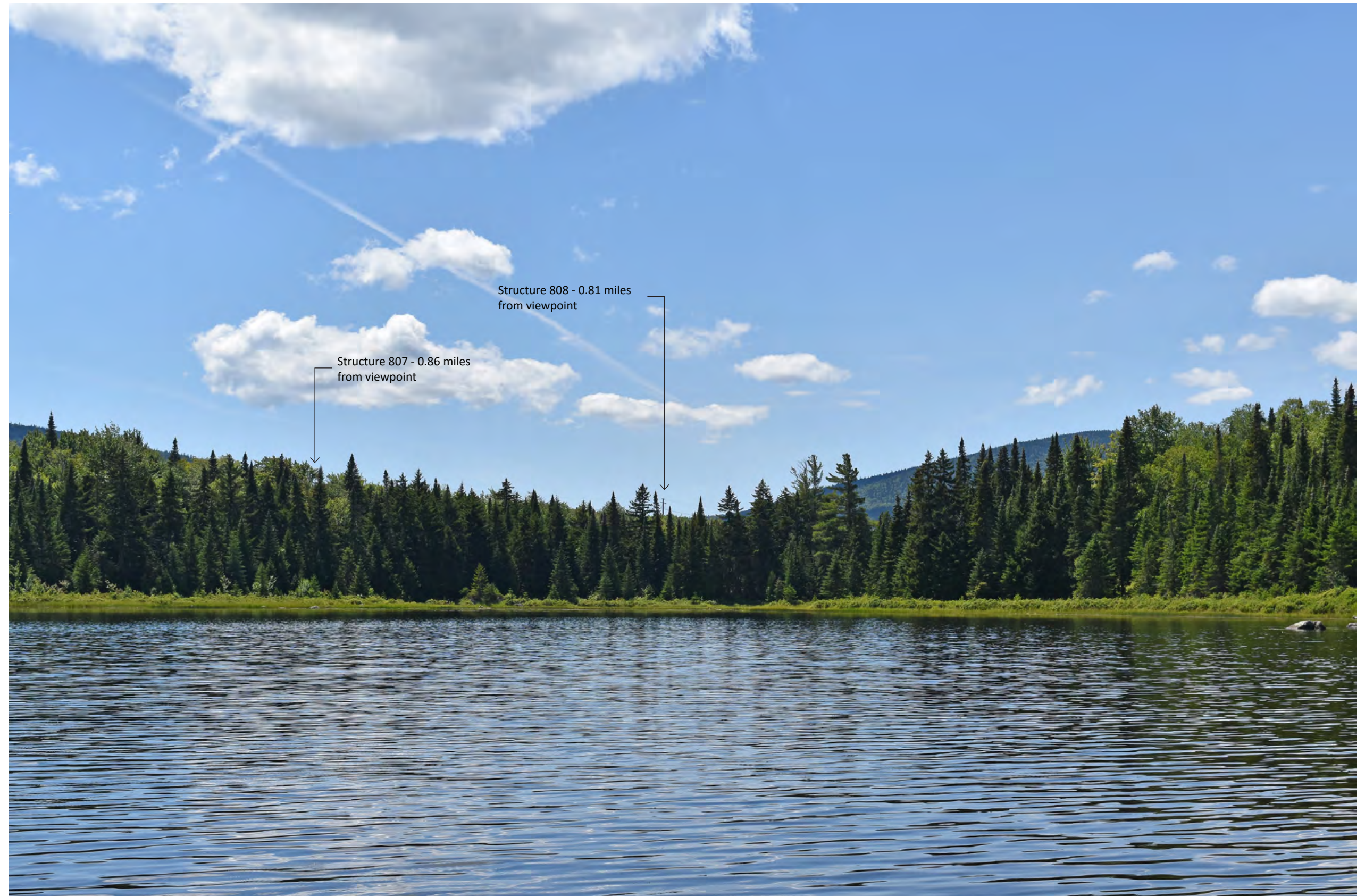
Photograph Information

Location	45.503180°, -70.634209°
Viewing Direction	Southeast to Southwest
Horizontal Angle of View	86°
Date and Time	07/26/17 at 12:50 pm
Camera Focal Length	35 mm
Camera Make/Model	Nikon D5500
Photo Source	TJD&A
Proposed Structures Visible	2
Approximate Distance to Nearest Visible Structure	4,119 feet (0.78 miles)





Existing Conditions 1C, Viewpoint 2: Normal view looking southwest near the northwestern shore of Beattie Pond.

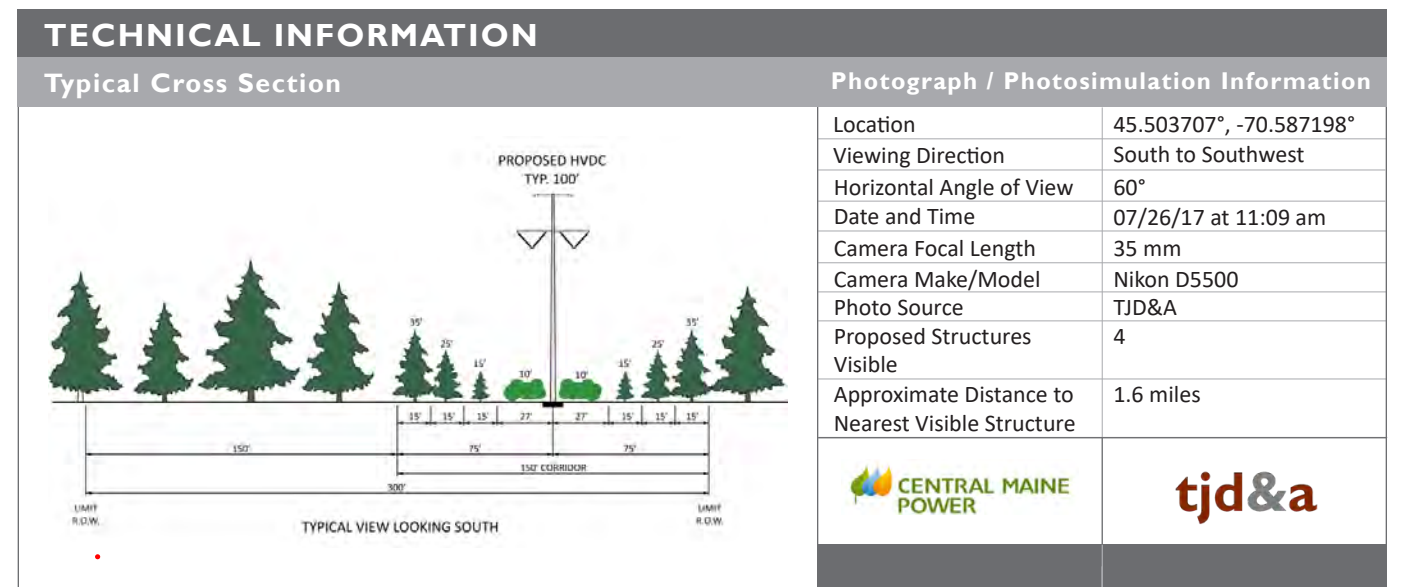
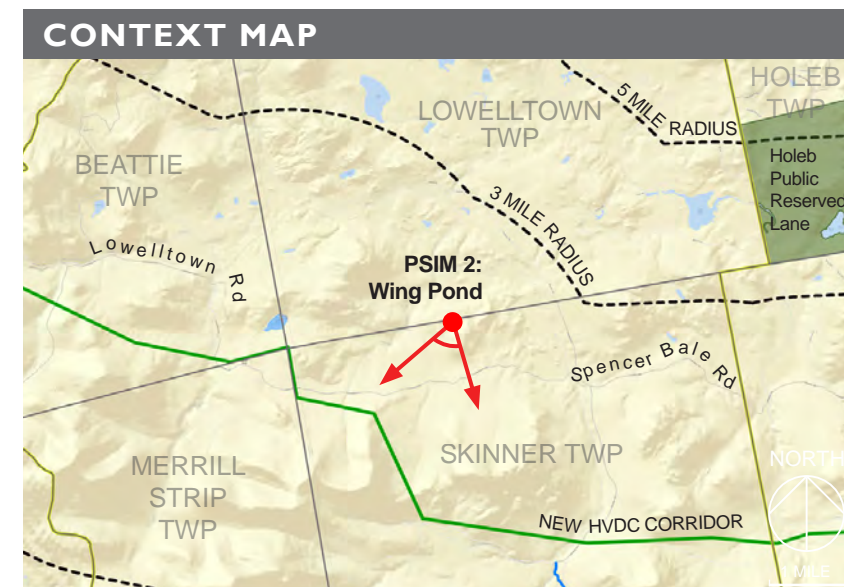
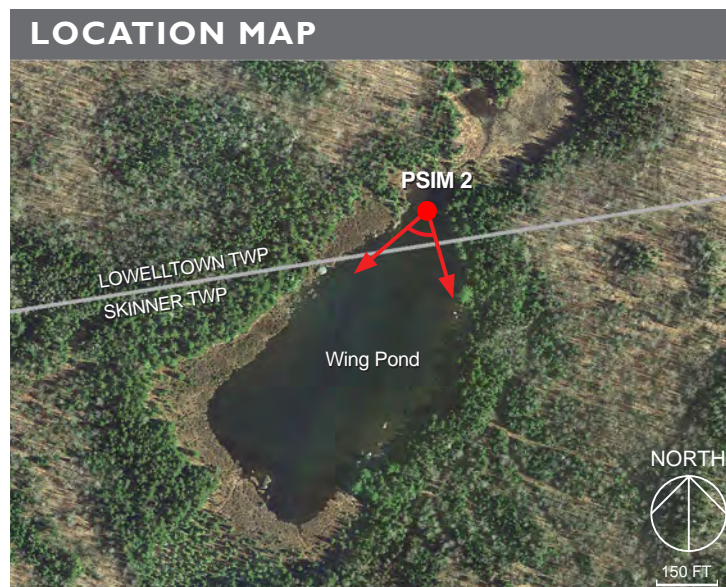


Photosimulation 1C, Viewpoint 2: Normal view looking southwest near the northwestern shore of Beattie Pond. The tops of two structures and associated conductors and shield wires, will be minimally visible through intervening vegetation.

PHOTOSIMULATION 2: WING POND, LOWELLTOWN TWP



Photosimulation 2: Panoramic view looking south to southwest from the northern end of Wing Pond toward the proposed HVDC transmission line. Four structures and conductors will be visible in existing harvested areas at the base of Smart Mountain at a distance of 1.6 to 1.8 miles from this viewpoint. Wing Pond is a Management Class 6, Remote Pond. There are no camps on this Pond. See Appendix B: Study Area Photographs for additional images.



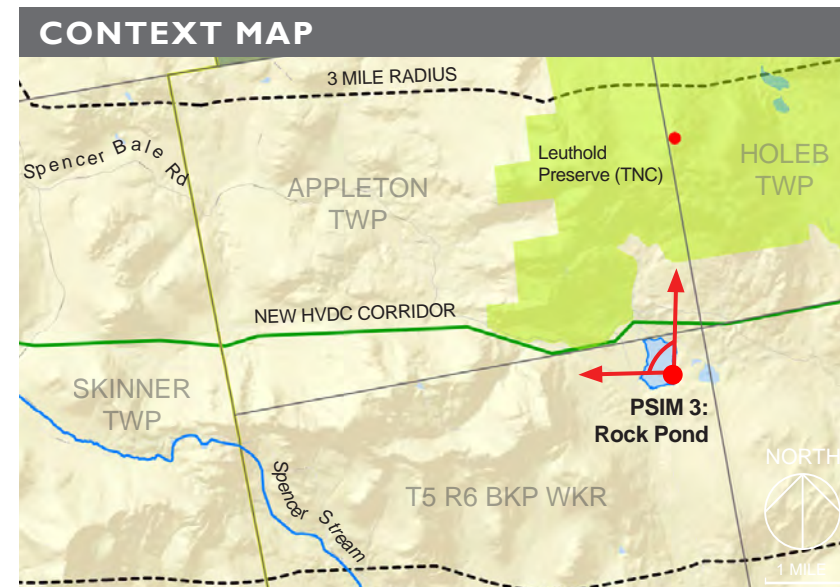
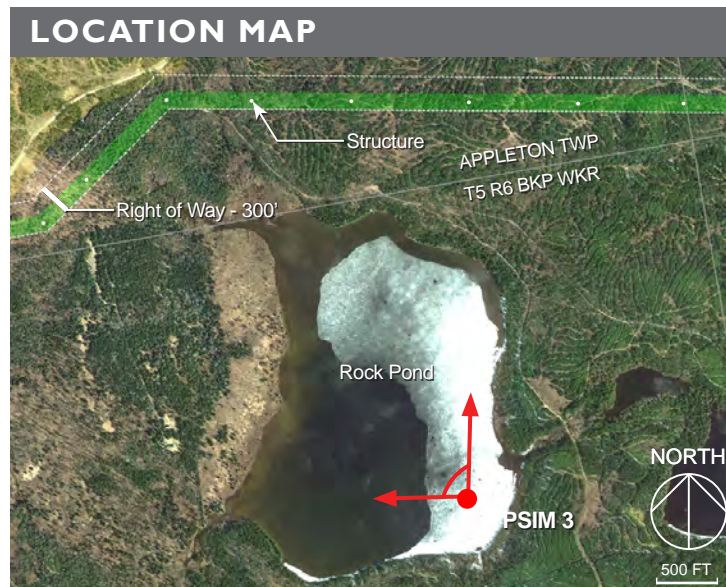


Photosimulation 2A: Normal view looking southwest from Wing Pond toward the proposed HVDC transmission line. Four structures and conductors will be visible at a distance of 1.6 to 1.8 miles from this viewpoint.

PHOTOSIMULATION 3: ROCK POND, T5 R6 BKP WKR



Photosimulation 3: Panoramic view looking west to north from the southeast end of Rock Pond toward the proposed HVDC transmission line. Approximately 16 structures, conductors, and portions of the tapered vegetation corridor will be visible at distances of 0.7 to 2.5 miles from this viewpoint. A portion of the tapered vegetation corridor will be visible between Three Slide and Greenlaw Mountains. Visible mountains from left to right: Three Slide Mountain, Greenlaw Mountain, No. 6 Mountain, and No. 5 Mountain. See Appendix B: Study Area Photographs for additional images.



TECHNICAL INFORMATION	
Typical Cross Section	
Photograph / Photosimulation Information	
Location	45.457577°, -70.387233°
Viewing Direction	West to North
Horizontal Angle of View	94°
Date and Time	07/25/17 at 2:29 pm
Camera Focal Length	35 mm
Camera Make/Model	Nikon D5500
Photo Source	TJD&A
Proposed Structures Visible	16
Approximate Distance to Nearest Visible Structure	0.7 miles



Photosimulation 3A: Normal view looking northwest from the southeast end of Rock Pond toward the proposed HVDC transmission line. Approximately 11 structures and associated conductors will be visible in the tapered vegetation corridor in the valley between Three Slide and Greenlaw Mountains.



Existing Conditions 3B: Normal view looking north from the southeast end of Rock Pond. Greenlaw Mountain is visible on the left side of the image. No. 6 Mountain is visible on the right side of the image.



Photosimulation 3B: Normal view looking north from the southeast end of Rock Pond toward the proposed HVDC transmission line. Three structures, conductors, and portions of the tapered vegetation corridor will be visible at distances of 0.6 to 0.8 miles from this viewpoint.



Existing Conditions 3C: Normal view looking northeast from the southeast end of Rock Pond. No. 6 Mountain is visible on the left side of the image. No. 5 Mountain is visible on the right side of the image.

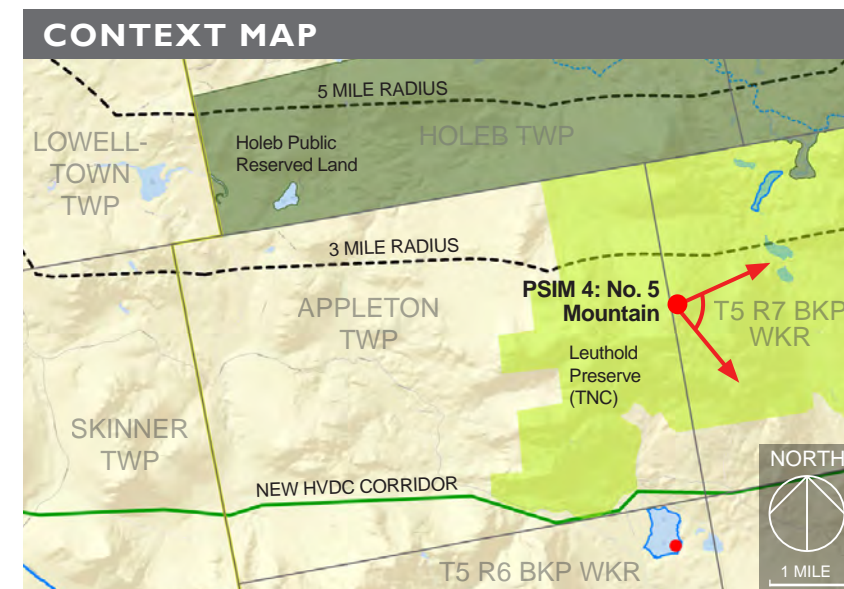
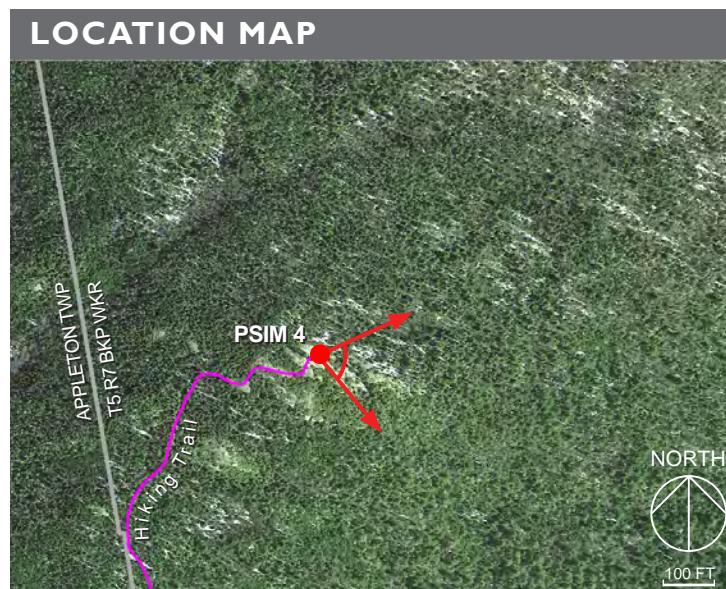


Photosimulation 3C: Normal view looking northeast from the southeast end of Rock Pond. Two structures, conductors, and portions of the tapered vegetation corridor will be visible against a wooded hillside at distances of 0.6 to 0.8 miles from this viewpoint.

PHOTOSIMULATION 4: NO. 5 MOUNTAIN, T5 R7 BKP WKR



Photosimulation 4: Panoramic view looking northeast to southeast from No. 5 Mountain within the Leuthold Preserve, toward the proposed HVDC transmission line. The closest visible portion of the proposed 150' tapered vegetation corridor will be 3.7 miles from this viewpoint. No. 6 Mountain screens the closest portions of the project from view. Coburn Mountain, Whipple Pond, and Hall Pond are visible in the center of the image. Fish Pond is visible on the right side of the image. See Appendix B: Study Area Photographs for additional images. Due to updated engineering and surface data, the corridor location has shifted slightly as seen from this viewpoint.



TECHNICAL INFORMATION	
Typical Cross Section	
Photograph / Photosimulation Information	
Location	45.501158°, -70.386923°
Viewing Direction	Northeast to Southeast
Horizontal Angle of View	75°
Date and Time	06/15/17 at 9:36 am
Camera Focal Length	35 mm
Camera Make/Model	Nikon D5500
Photo Source	TJD&A
Proposed Structures Visible	3.7 miles to nearest visible
Approximate Distance to Nearest Visible Structure	3.7 miles



Photosimulation 4A: Normal view looking east from No. 5 Mountain toward the proposed HVDC transmission line. The closest visible portions of the 150' tapered vegetation corridor will be partially visible at a distance of 3.7 miles from this viewpoint.



Existing Conditions 4B: Normal view looking southeast from No. 5 Mountain. Coburn Mountain, Whipple Pond, and Hall Pond are visible on the left side of the image.

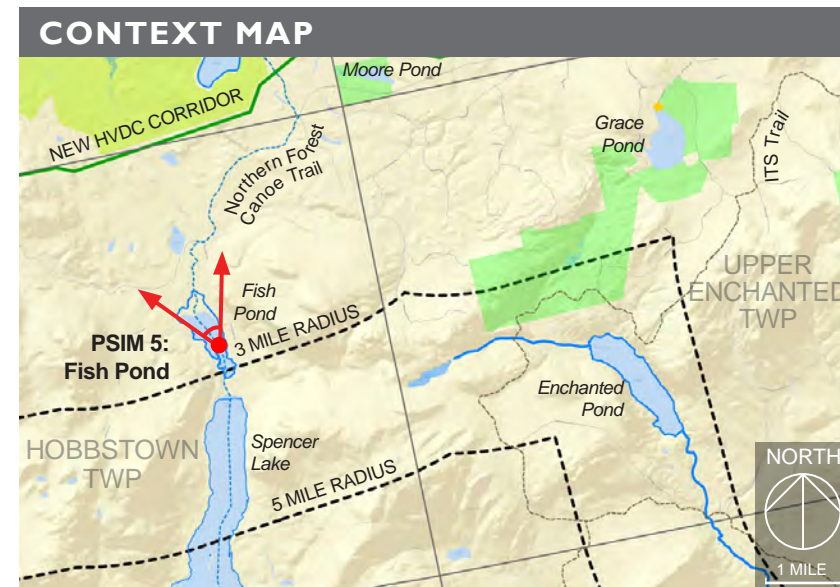
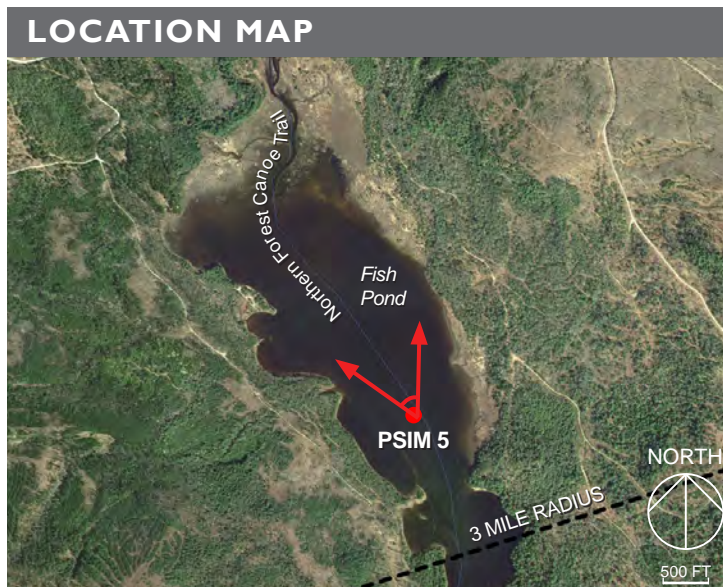


Photosimulation 4B: Normal view looking southeast from No. 5 Mountain. The closest visible portions of the 150' tapered vegetation corridor will be partially visible at a distance of 3.7 miles from this viewpoint.

PHOTOSIMULATION 5: FISH POND, Hobbstown Twp



Photosimulation 5: Panoramic view looking northwest to north from near the eastern shore of Fish Pond toward the proposed HVDC transmission line. Fish Pond is a scenic resource rated as ‘Significant’ in the Maine Wildlands Lake Assessment. No. 6 Mountain and No. 5 Mountain are visible on the left side of the image. The tops of three structures and conductors will be visible at distances of 3.1 to 3.8 miles from this viewpoint. See Appendix B: Study Area Photographs for additional images.



TECHNICAL INFORMATION		
Typical Cross Section	Photograph / Photosimulation Information	
	Location	45.439868°, -70.294360°
	Viewing Direction	Northwest to North
	Horizontal Angle of View	60°
	Date and Time	07/25/17 at 1:11 pm
	Camera Focal Length	35 mm
	Camera Make/Model	Nikon D5500
	Photo Source	TJD&A
	Proposed Structures Visible	3
	Approximate Distance to Nearest Visible Structure	3.1 miles



Photosimulation 5A: Normal view looking northwest from Fish Pond toward the proposed HVDC transmission line. Top portions of three structures will be visible at distances of 3.1 to 3.8 miles from this viewpoint. The project will mostly be screened from view by shoreline vegetation and topography.