

Project Area	Town
Highway	River
Major Road	Lake
Local Street	Reservoir
Railroad	Civil Township Boundary
Airport	County Boundary

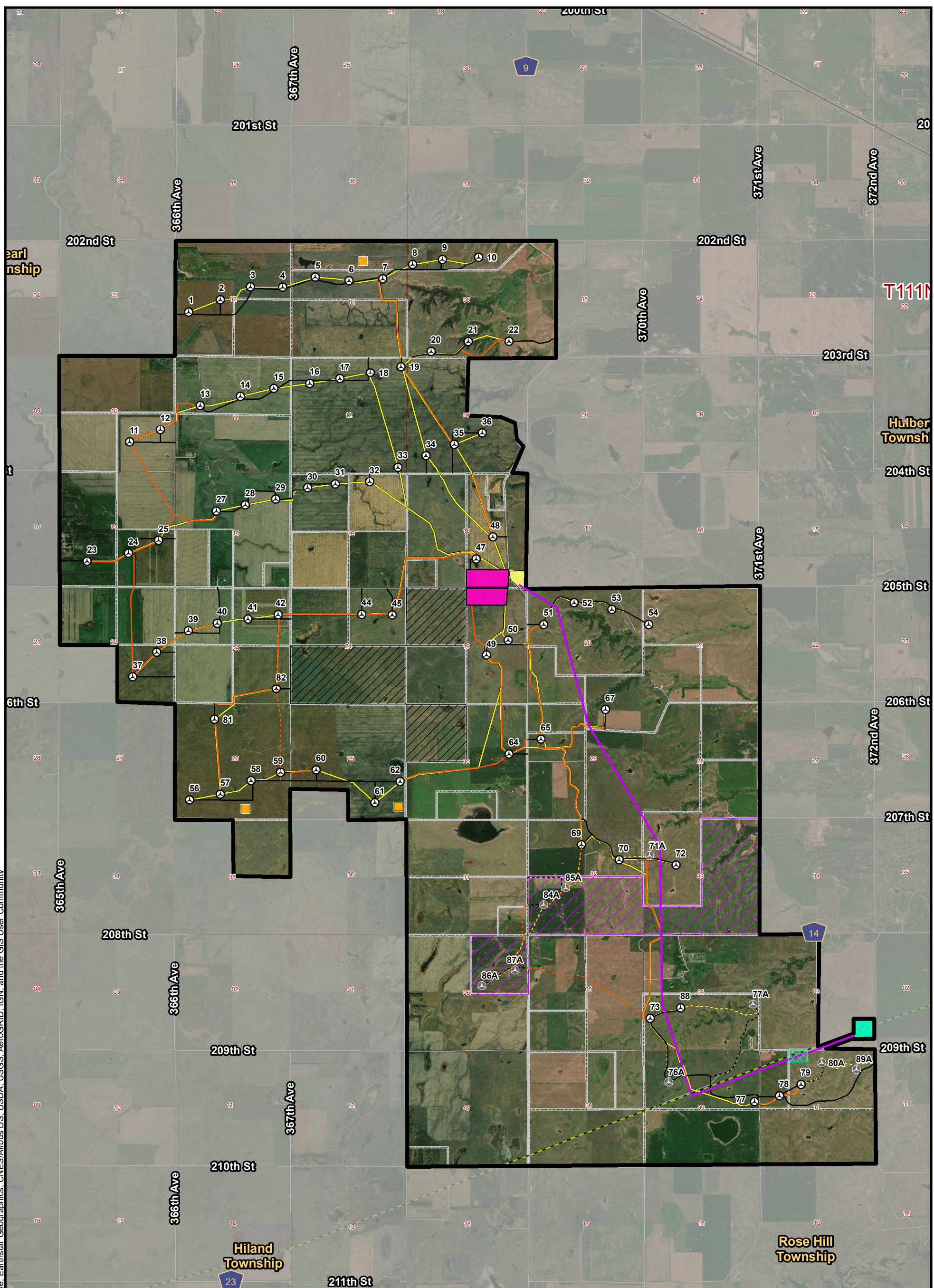
NORTH

0 1.5 3
Miles

**BURNS
MCDONNELL**

Figure 1-1
Project Location
Environmental Assessment
Sweetland Wind Farm, LLC
Hand County, South Dakota

Path: \\bmcdfs\resources\local\clients\kcmiens\scout\CleanEn1\03828_SweetlandWind\ArcGIS\Geospatial\DataFiles\ArcDocs\EA Figures\Figure_2_1_Project Layout_20191003.mxd jrdingman 10/3/2019
 COPYRIGHT © 2019 BURNS & McDONNELL ENGINEERING COMPANY, INC.
 Service Layer Credits: Source: Esri, DigitalGlobe, GeoEye, Earthstar Geographics, CNES/Airbus DS, USDA, USGS, AeroGRID, IGN, and the GIS User Community



<ul style="list-style-type: none"> Project Area Primary Turbine Alternate Turbine Laydown Yard/O&M Facility Substation Switchyard Preferred Switchyard Alternate Crane Path Primary Crane Path Alternate 	<ul style="list-style-type: none"> Collection Line Primary Collection Line Alternate Wind Turbine Access Road Primary Wind Turbine Access Road Alternate Transmission Facility WAPA 230-kV Transmission Line Permanent Meteorological Tower 	<ul style="list-style-type: none"> Township and Range Section Railroad Highway Local Street 	<p> NORTH</p> <p>0 2,000 4,000 Feet</p>	
<ul style="list-style-type: none"> Participating Not Participating Pending Participation 				
<p>Figure 2-1 Preliminary Project Layout Environmental Assessment Sweetland Wind Farm, LLC Hand County, South Dakota</p>				

Path: \\mcd\dfs\resources\Local\Clients\KCM\EN\Scout\CleanEn\103828_Sweetland\Wind\ArcGIS\Geospatial\DataFiles\ArcDocs\EA\Figures\Figure_3-1_WaterResources.mxd jdringman 10/3/2019
 COPYRIGHT © 2019 BURNS & MCDONNELL ENGINEERING COMPANY, INC.
 Service Layer Credits: Esri, HERE, Garmin, (c) OpenStreetMap contributors, and the GIS user community

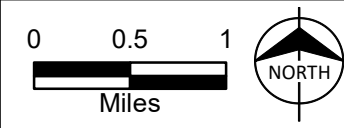
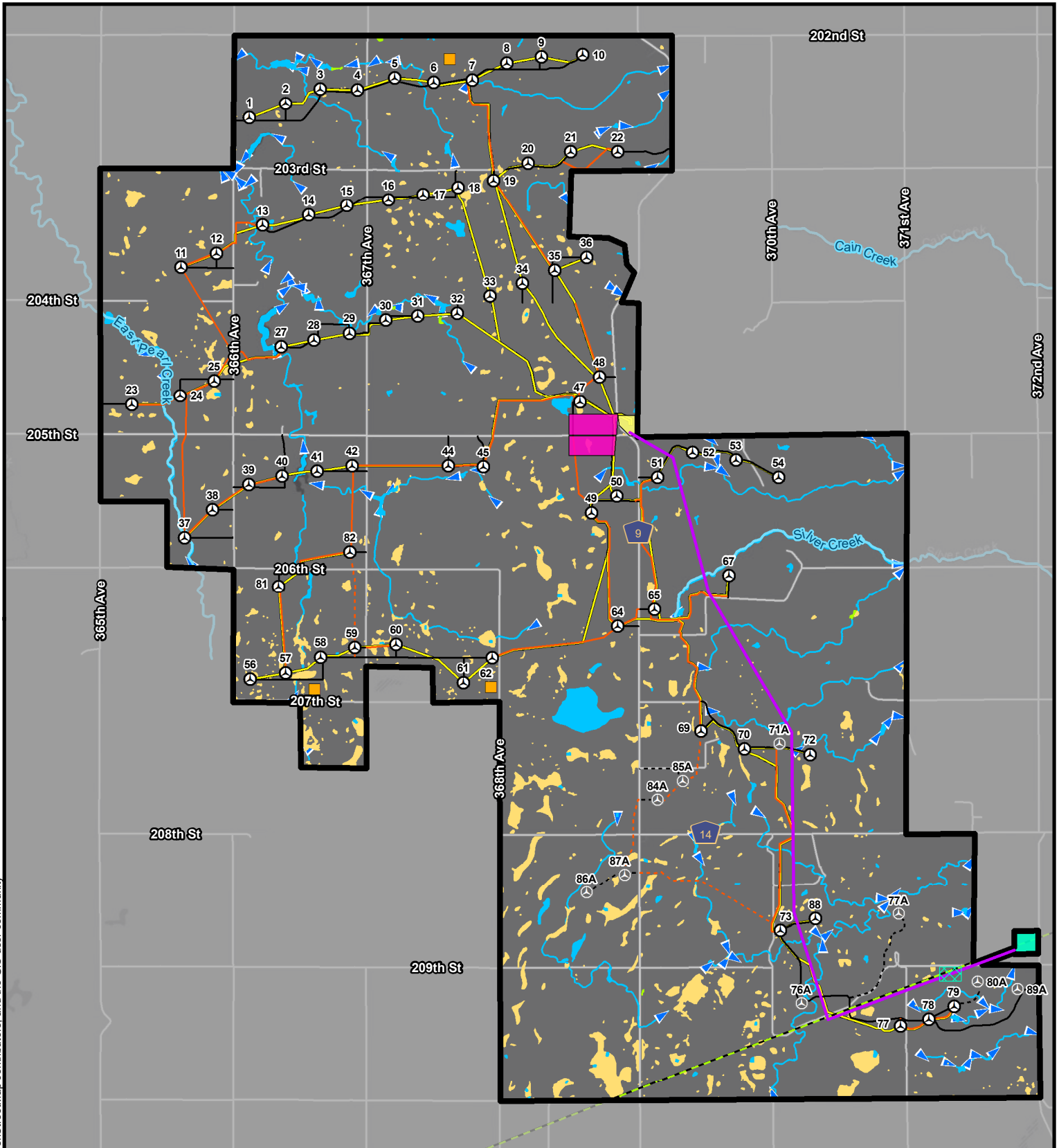
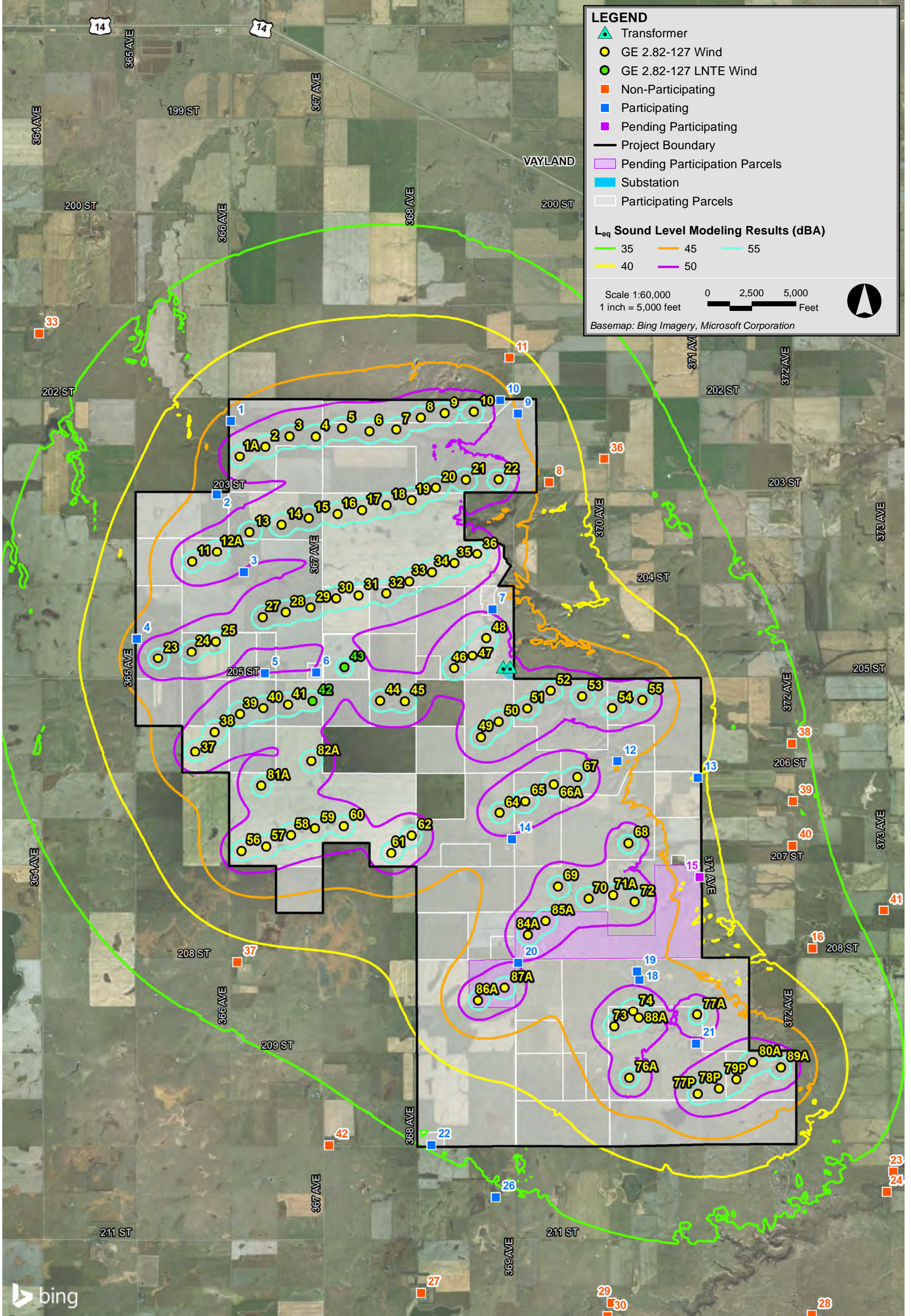


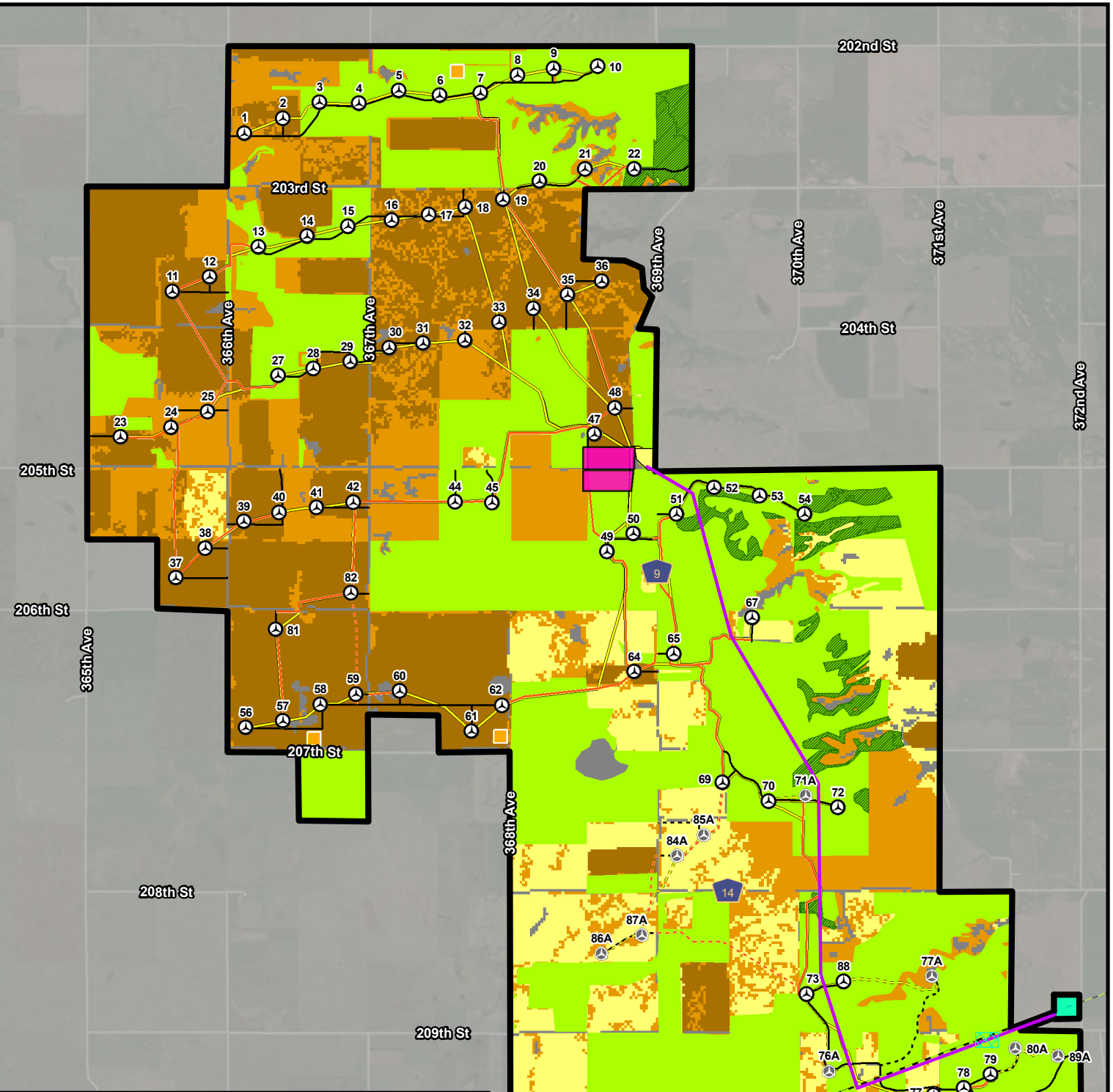
Figure 3-1
Water Resources
 Environmental Assessment
 Sweetland Wind Farm, LLC
 Hand County, South Dakota





Sweetland Wind Hand County, South Dakota

Path: \\mcd\dfs\resources\Local\Clients\KCM\ENR\103828 SweetlandWind\ArcGIS\Geospatial\DataFiles\ArcDocs\EA Figures\Figure_3-3_LULC.mxd jdringman 10/3/2019
 COPYRIGHT © 2019 BURNS & MCDONNELL ENGINEERING COMPANY, INC.
 Service Layer Credits: Source: Esri, DigitalGlobe, GeoEye, Earthstar Geographics, CNES/Airbus DS, USDA, USGS, AeroGRID, IGN, and the GIS User Community



Project Area	Permanent Meteorological Tower
Primary Turbine	WAPA 230-kV Transmission Line
Alternate Turbine	Above Average Grassland
Crane Path Primary	Potentially Undisturbed Grassland
Crane Path Alternate	Land Cover Classification*
Collection Line Primary	Haylands
Collection Line Alternate	Pasturelands and rangelands
Wind Turbine Access Road Primary	Land used primarily for row and nonrow crops in rotation
Wind Turbine Access Road	Other (i.e., developed, open water, wetlands, forested, shrub/scrub)
Substation	Grassland
Laydown Yard/O&M Facility	Local Street
Switchyard Preferred	
Switchyard Alternate	
Transmission Facility	

*The following land cover classifications were not identified within the Project Area:

- Undisturbed native grasslands
- Existing and potential extractive nonrenewable resources
- Other major industries
- Public, commercial, and institutional use
- Municipal water supply and water sources for organized rural water systems
- Irrigated lands

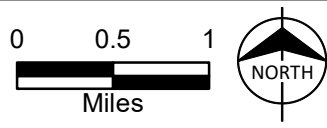
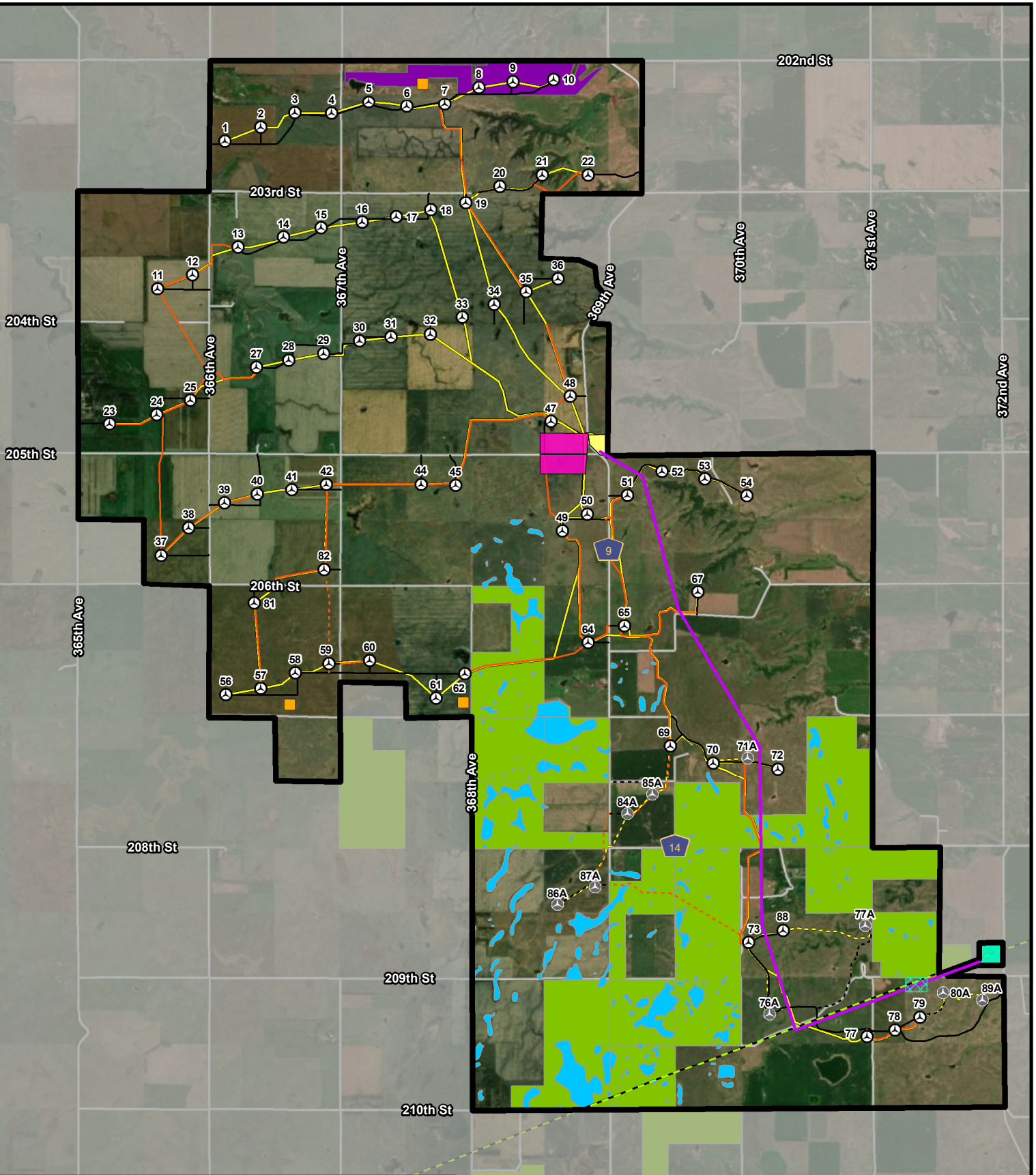


Figure 3-3
 Land Cover
 Environmental Assessment
 Sweetland Wind Farm, LLC
 Hand County, South Dakota

Path: \\mcd\dfs\resources\Local\Clients\KCM\EN\SweetlandWind\ArcGIS\Geospatial\DataFiles\ArcDocs\EA Figures\Figure_3-4_PublicLands.mxd jdringman 10/3/2019
 COPYRIGHT © 2019 BURNS & MCDONNELL ENGINEERING COMPANY, INC.
 Service Layer Credits: Source: Esri, DigitalGlobe, GeoEye, Earthstar Geographics, CNES/Airbus DS, USDA, USGS, AeroGRID, IGN, and the GIS User Community

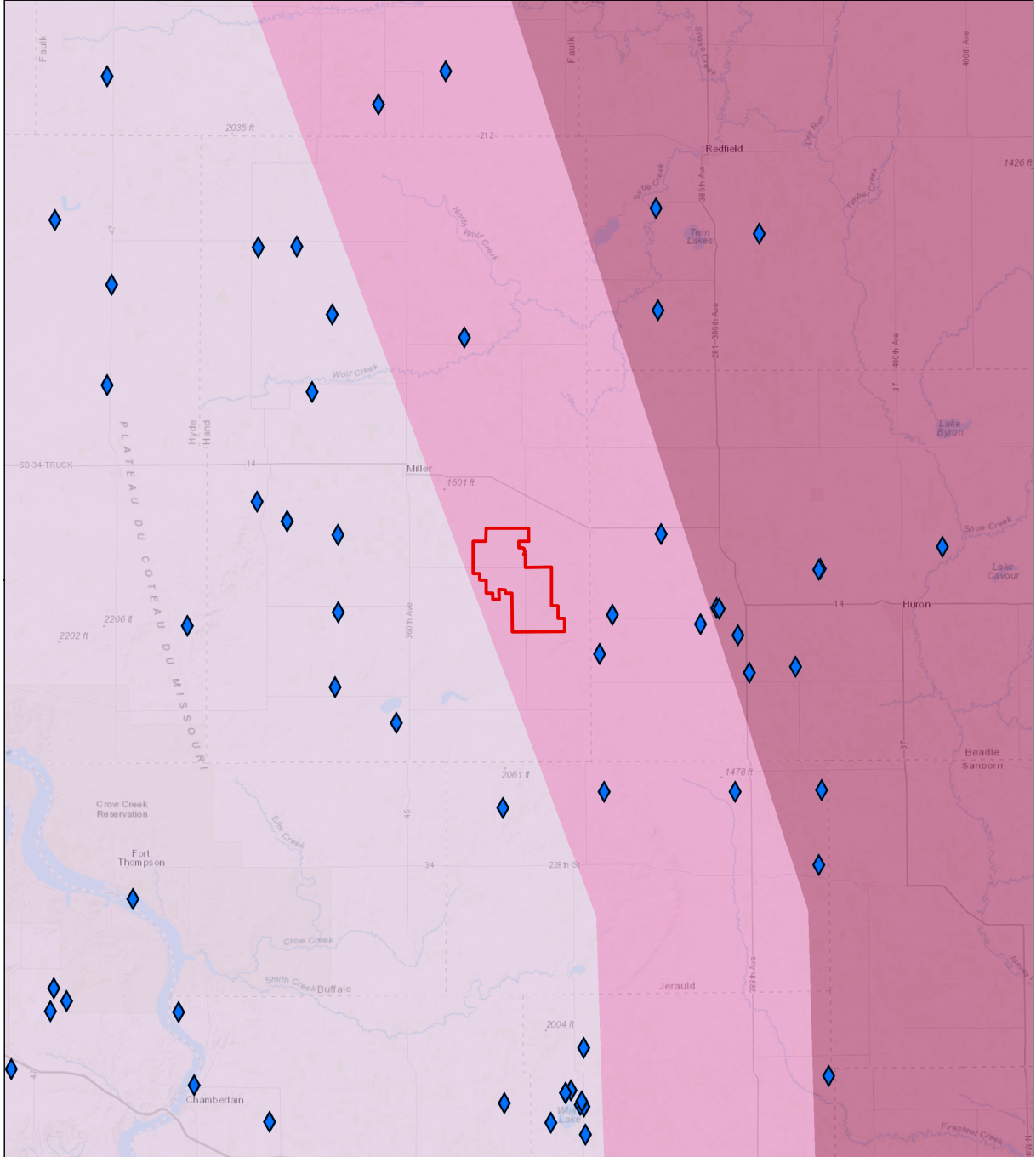


Project Area	Crane Path Alternate
Alternate Turbine	Collection Line Primary
Primary Turbine	Collection Line Alternate
Permanent Meteorological Tower	Wind Turbine Access Road Primary
Laydown Yard/O&M Facility	Wind Turbine Access Road Alternate
Substation	WAPA 230-kV Transmission Line
Switchyard Preferred	Local Street
Switchyard Alternate	Grasslands Reserve Program
Transmission Facility	USFWS Wetland Easement
Crane Path Primary	USFWS Grassland Easement

0 0.5 1
Miles

**BURNS
MCDONNELL** SM

Figure 3-4
 Public Lands and
 Conservation Easements
 Environmental Assessment
 Sweetland Wind Farm, LLC
 Hand County, South Dakota



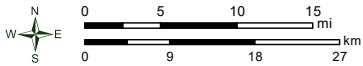
Sweetland Wind Project,
Hand County, SD

- Project Area
- ◆ Whooping Crane Sightings Through Spring 2017

Whooping Crane Migration Corridor

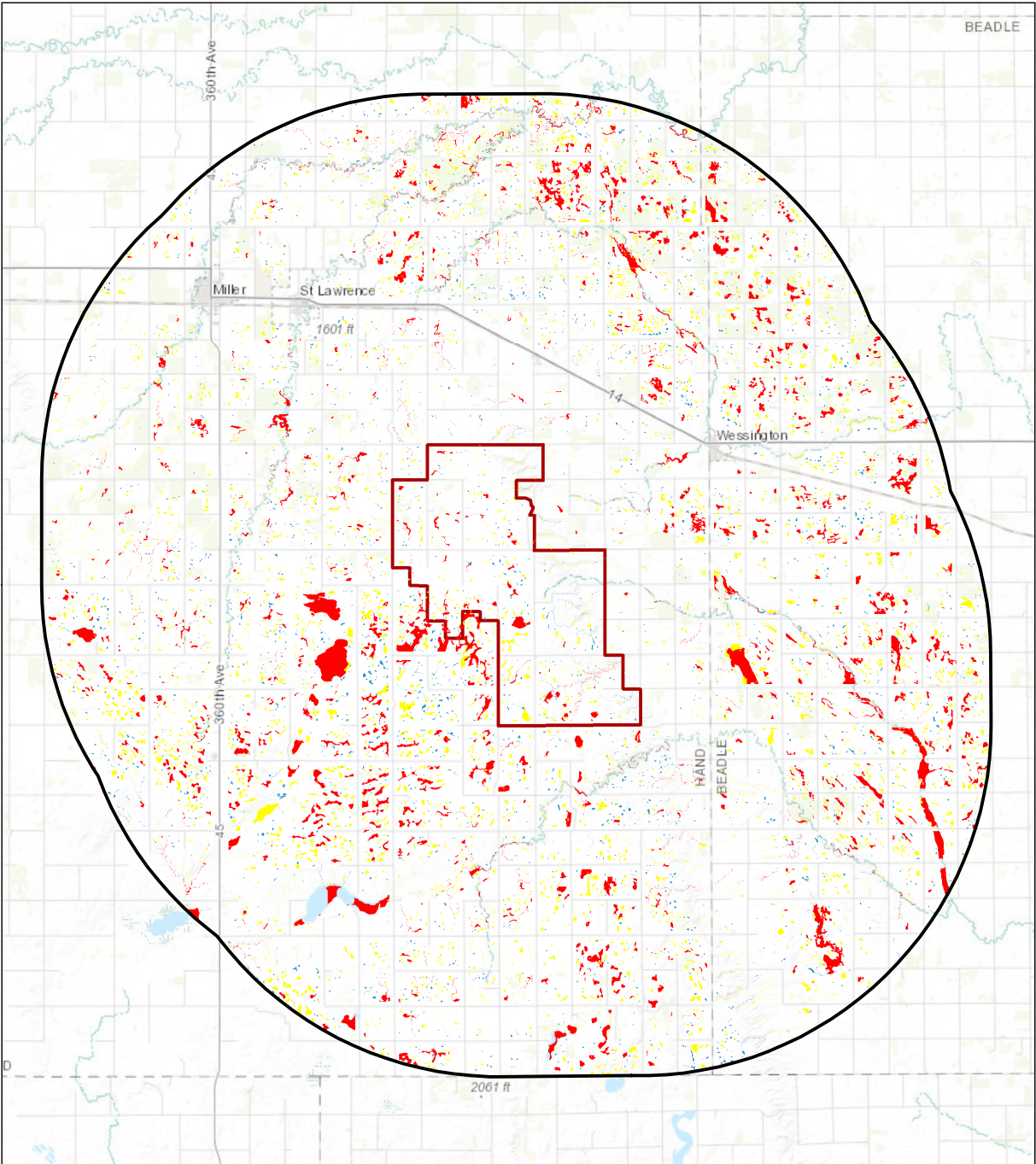
- Percent of Confirmed Sightings
- 50%
- 75%
- 95%

Figure 3-5: Whooping Crane Migration Corridor



Data Source: World Topo; USFWS; ESRI
 Coordinate System: NAD 1983 UTM Zone 14N
 Date: 10/11/2018 Author: Jeff Fruhwirth





Sweetland Wind Project,
Hand County, SD

- Project Area
- Survey Area (10-mi)

**Whooping Crane
Stopover Suitability
Score**

- 3 - 7

- 8 - 11
- 12 - 19
- Suitable: ≥12
- Not Suitable: <12

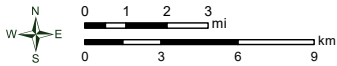


Figure 3-6: Whooping Crane Stopover Habitat

Data Source: World Topo; USFWS; ESRI
 Coordinate System: NAD 1983 UTM Zone 14N
 Date: 5/9/2019 Author: Jeff Fruhwirth

