



Hurricane Ida | Update #11

REPORT TIME & DATE: 11:00 AM EDT | Wednesday, September 08, 2021

REPORT DISTRIBUTION: Public

EXECUTIVE SUMMARY

Hurricane Ida made landfall near Port Fourchon, Louisiana around 1:00 PM EDT, August 29, as a category 4 hurricane. Ida caused substantial damage to the electric grid in Louisiana and disrupted the oil and natural gas supply chain.

Electricity Sector Summary

- As of 8:00 AM EDT on September 8, there are approximately 378,000 customer outages remaining in Louisiana due to Hurricane Ida.
- Entergy is working to restore the transmission system serving New Orleans, Louisiana, which was damaged during the storm, causing outages to most of the city. Full restoration in New Orleans East and Orleans Parish is expected September 8, although many customers are expected to be restored before end of day. Baton Rouge was expected to be fully restored by September 6.
- Near complete restoration for the hardest hit areas in the southeast Louisiana, including portions of Assumption, Lafourche, Plaquemines, St Charles, Terrebonne, and lower Jefferson parishes are expected to extend into the latter half of September.

Oil & Natural Gas Sector Summary

- Five refineries in Louisiana remain shut, accounting for about 1.0 million b/d of refinery capacity, or approximately 6% of the total U.S. operable refining capacity. All three refineries in the Baton Rouge area and one near New Orleans (1.3 million b/d of refinery capacity) have initiated the restart process, although the refiners will not produce at full rates for several days. Refinery operations cannot restart until feedstock supply, power, and other essential third-party utilities are restored. Fuel stocks in the area are being drawn down from storage while refineries and offshore production are restored.
- As of 12:30 PM EDT, September 7, 79% of the oil production and 78% of the natural gas production in the federally administered areas of the U.S. Gulf of Mexico remained shut-in, according to estimates by the Bureau of Safety and Environmental Enforcement.
- Widespread power outages, fuel shortages, and high demands are leading to retail gas station outages in impacted areas. Available stations are experiencing long-lines and high demand. Resupply may be impeded by power outages at terminals. Heavy traffic in some areas is also delaying resupply efforts.

DOE ACTIONS**DOE ENERGY RESPONSE ORGANIZATION (ERO): ACTIVATED - LEVEL 1**

- DOE is coordinating with industry, interagency, and territorial partners to support response efforts related to Hurricane Ida.
- DOE has worked with FEMA and industry partners to prepare for hurricane response operations during the COVID-19 pandemic.

DOE EMERGENCY SUPPORT FUNCTION (ESF) #12 DEPLOYMENTS:

- FEMA Region VI Response Coordination Center – Denton, TX - VIRTUAL
- Louisiana Joint Field Office – Baton Rouge, LA
- Louisiana State Emergency Operation Center – Baton Rouge, LA
- *Note: Additional DOE ESF #12 Responders have deployed to Louisiana to support the State Emergency Operation center and to coordinate with interagency, state, and industry partners.*



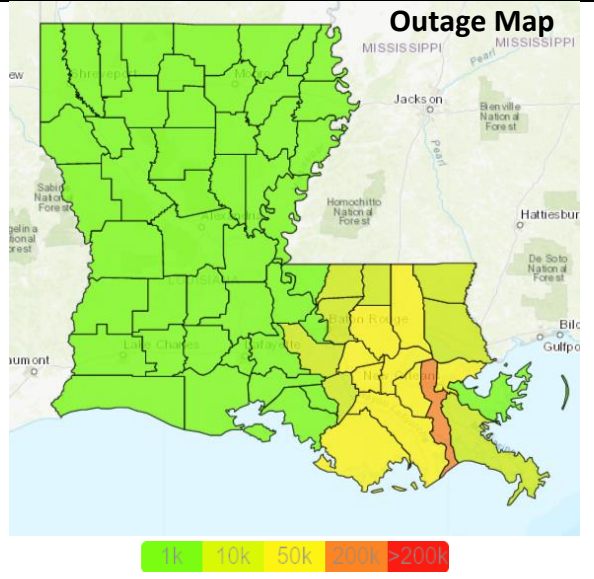
ELECTRICITY SECTOR

POWER OUTAGES

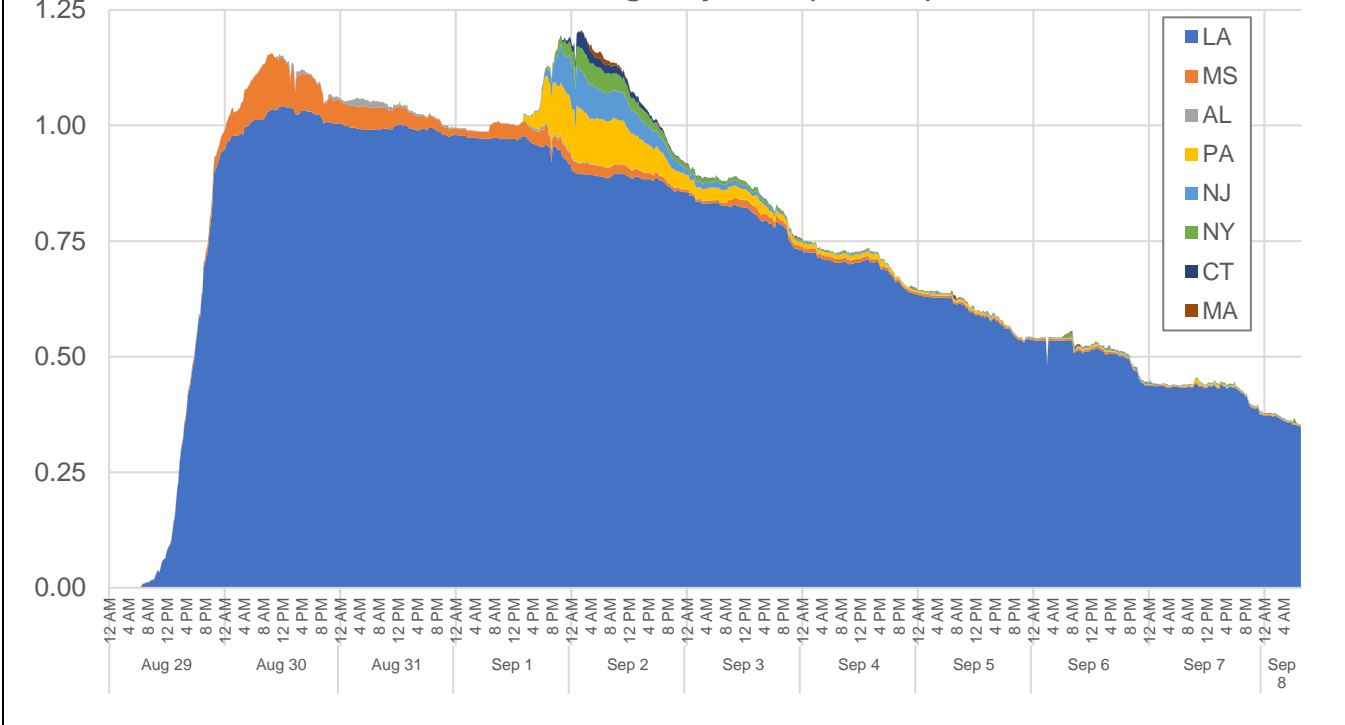
- As of 8:00 AM EDT on September 8, there are approximately 378,000 outages remaining in Louisiana due to Ida.

Customer Power Outages as of 8:00 AM EDT 09/08/2021

State	Current Outages	% of State Without Power	Storm Peak Outages	% Restored
LA	378,295	18%	~1,075,158	65%



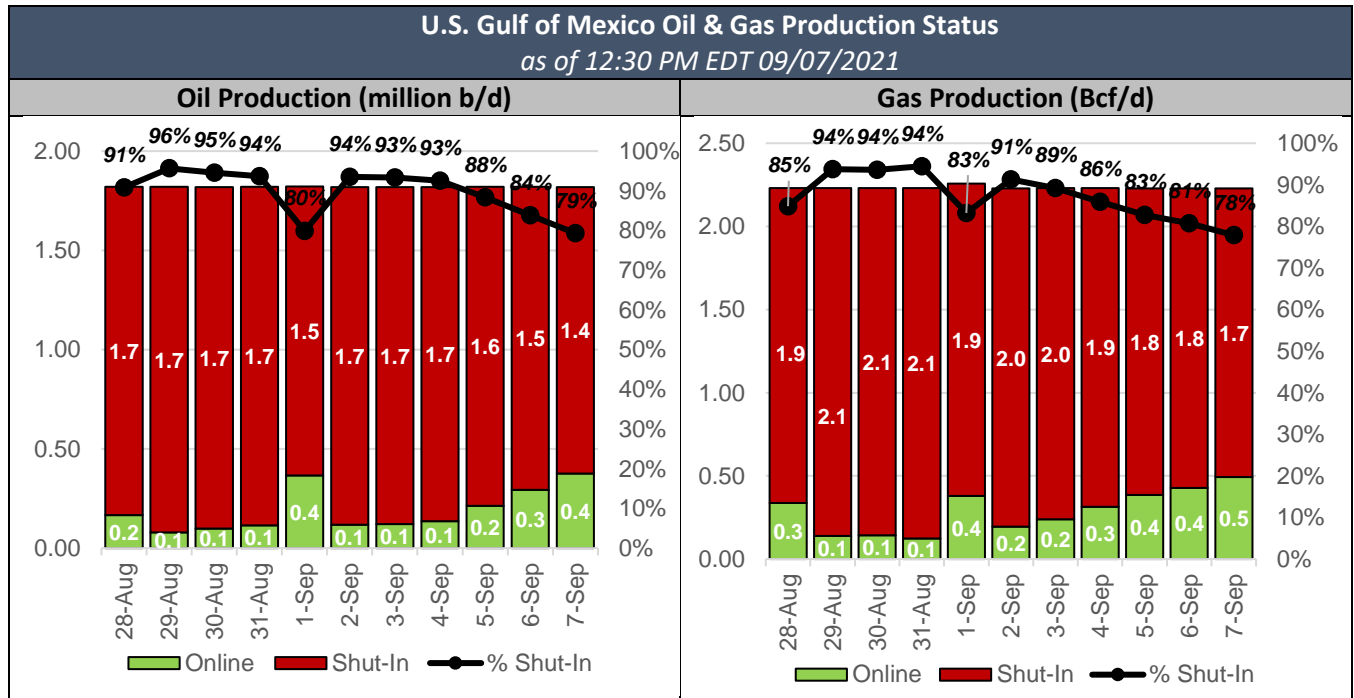
Customer Outages by State (Millions)



- Customer outages reflect how many electric meters are without power. Meters represent individual homes, businesses, and industrial sites.
- Industry has activated mutual assistance networks and over 27,000 personnel from at least 41 states and the District of Columbia are support restoration efforts. Crews, materials, and equipment was pre-positioned in advance of impacts from Hurricane Ida.
- Utilities typically follow an overall plan to restore service to customers. After power is restored to essential services and facilities critical to public health and safety, crews focus on repairing lines that will return service to the largest number of customers in the least amount of time. Power is restored systematically to neighborhoods and businesses, then to small groups of customers and individual homes.
- A multi-week restoration effort is expected for the hardest-hit areas in southeastern Louisiana, where portions of the distribution systems need to be rebuilt. While full restoration in the hardest-hit areas may take several weeks, customers will be restored as repairs are complete.
- Some customers may not be able to receive power at this time due to damage to customer equipment and/or damage to the customer's structure. Entergy is [reminding](#) customers that they need to complete repairs and inspections of damaged customer owned electrical equipment before power can be restored.
- Entergy has announced expected restoration times for all Louisiana customers affected by Hurricane Ida, including for the hardest-hit parishes in Southeast Louisiana.
- The longest estimated restoration times are in the following parishes: Assumption (September 22), Lafourche (September 29), Lower Jefferson (September 29), Plaquemines (September 29), Terrebonne (September 29). The September 29 ETRs represent "no later than" dates, and Entergy will attempt to expedite restoration.
- Entergy customers in New Orleans East and Orleans Parish have an estimated restoration time of September 8 and Baton Rouge has an estimated restoration time of September 8.
- Estimated times to restoration are for near-complete restoration of customers that can receive power, in the area. Many customers will be restored prior to the estimates.

OFFSHORE PRODUCTION

- As of 12:30 PM EDT, September 7, 1.43 million barrels per day (b/d) (79.33%) of the oil production and 1.74 billion cubic feet per day (Bcf/d) (77.89%) of the natural gas production in the federally administered areas of the U.S. Gulf of Mexico are shut-in, according to estimates by the Bureau of Safety and Environmental Enforcement (BSEE).
- In addition, BSEE reports that 79 out of 560 manned platforms have been evacuated; four of the 11 (36.36%) non-dynamically positioned rigs have been evacuated; and two of the 15 dynamically positioned rigs have moved out of the storm’s path as a precaution.



Source: [BSEE](https://www.bsee.gov)

PORTS & WATERWAYS

- The U.S. Coast Guard has reopened all major ports in Louisiana, Mississippi and Alabama, although minor restrictions remain in effect at several ports.
 - Port Fourchon is preparing for re-opening post Hurricane Ida for large companies operating in the area. No major obstructions found inside the port or its channels that would delay or cause disruptions to deliveries.
- **Louisiana Offshore Oil Port (LOOP)** suspended operations at its marine terminal on August 28, per standard procedure. LOOP is the U.S. port capable of receiving very large crude carriers (VLCCs).
- The **Lower Mississippi River** is open to vessel traffic with some restrictions.
 - The following restrictions are in place for vessels traveling between mile markers 108 and 167.5 as a result of ongoing barge recovery operations:
 - Tow sizes are limited to 36 barges southbound and 42 barges northbound, with six wide being the maximum.
 - Vessels are advised to sail as close to the centerline as possible and maintain the slowest safe speed in the vicinity of ongoing vessel salvage operations.
 - On September 6, the Captain of the Port of New Orleans rescinded daylight only operations for deep draft vessels operating south of mile marker 114, above the Head of Passes on the Lower Mississippi River. All past restrictions remain in effect.
 - On September 6, Pilots advised that sunken obstacles under the Crescent City Connection have been removed and passage is cleared for travel.
 - A field of partially sunken barges has been identified along the right bank of the Lower Mississippi River between mile markers 56-58.
- **Gulf Intracoastal Waterway** from mile marker 18-20 west of the Harvey Locks remains closed due to shoaling. USCG has advised all incoming vessels that multiple obstructions are blocking the Gulf Intracoastal Waterway between mile markers 37 – 54.



PETROLEUM REFINERIES

- As of September 8, five refineries in Louisiana remain shut down, accounting for about 1.0 million b/d of refinery capacity, or approximately 6% of total U.S. operable refining capacity. All three refineries in the Baton Rouge area and one near New Orleans have initiated the restart process, although they are likely not producing normal volumes yet. For most refineries, full restoration of normal refinery output will take two to three weeks after the passage of Ida, although restart timelines in New Orleans may take longer due to storm damage and ongoing power supply issues.
- On September 2, the Secretary of Energy authorized a release of 1.5 million barrels of crude oil from the U.S. Strategic Petroleum Reserve (SPR) to supply Exxon Mobil's Baton Rouge Refinery, and on September 3, another 0.3 million barrels were authorized for Placid Refining's Port Allen Refinery.

PETROLEUM TERMINALS

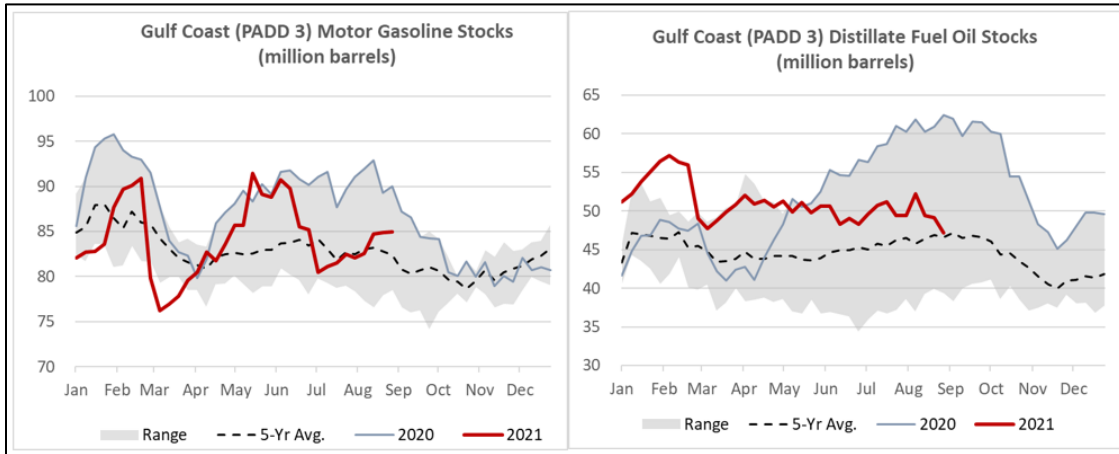
- Power outages in Baton Rouge and the New Orleans area are impeding the distribution of fuel from terminals to area gas stations, creating shortages. This is exacerbated by a shortage of hazmat qualified drivers and road conditions. Entergy is working to prioritize restoration of some terminals and options for generator support are being explored.
- As of September 5, there is a public announcement to communities south of Alexandria, LA to stay off the roads from 8PM to 6AM to clear way for fuel trucks. Traffic is heavy and fuel trucks are stuck in traffic on their way to/from the terminals

RETAIL STATION OUTAGES

- Widespread power outages, damage, flooding, and access constraints are leading to retail gas station closures in impacted areas. Due to limited availability from power outages, gas stations with power or operating on generator have reported long lines and high demand. The high demand at available stations has led to temporary fuel outages while stations wait for resupply. Power outages are also limiting availability of some terminals in the affected area. Long lines have been reported at terminals; however, some lines may be due to use of drivers not certified for specific terminals and require safety certification prior to entry. The state is supplying generators to some retail stations.
- The City of New Orleans has developed a website for tracking [Gas Station Status in Orleans Parish](#).

FUEL STOCKS

- For the week ending on August 27, 2021, the Gulf Coast (PADD 3) had 85.0 million barrels of total gasoline stocks, according to the Energy Information Administration (EIA). This is 3% higher than the five-year average for this time of year. For the week ending on August 27, the Gulf Coast had 47.1 million barrels of total distillate stocks, according to EIA. This is 1% higher than the five-year average for this time of year.



EMERGENCY DECLARATIONS & WAIVERS

EMERGENCY DECLARATIONS

To provide vital supplies and transportation services to a disaster area in the United States, emergency declarations may be issued by the President, Governors of States, or Federal Motor Carrier Safety Administration (FMCSA). These declarations trigger the temporary suspension of certain Federal safety regulations, including Hours of Service, for motor carriers and drivers engaged in specific aspects of the emergency relief effort. See [49 CFR 390.23](#) for the actual emergency regulation.

Emergency Declarations and HOS Waivers <i>as of 9:00 AM EDT 09/08/2021</i>				
State/Territory	Details	Effective Dates		Status
		Start	End	
AL, AR, LA, MS, TN, TX	Regional Federal Motor Carrier Safety Administration Emergency Declaration (HOS Waiver)	8/29	9/28	Active
Alabama	State of Emergency & HOS Waiver	8/28	Until rescinded	Active
Mississippi	State of Emergency	8/28	Until rescinded	Active
	Presidential Emergency Declaration	8/28	Until rescinded	Active
Kentucky	State of Emergency & HOS Waiver	8/30	9/9	Active
Louisiana	State of Emergency	8/26	9/27	Active
	Presidential Emergency Declaration	8/27	Until rescinded	Active
	Presidential Major Disaster Declaration	8/29	Until rescinded	Active
Virginia	State of Emergency	8/30	9/28	Active
Pennsylvania	State of Emergency	8/31	Until rescinded	Active
West Virginia	State of Emergency	8/31	9/30	Active
New Jersey	State of Emergency	9/1	Until rescinded	Active
	Presidential Emergency Declaration	9/2	Until rescinded	Active
	Presidential Major Disaster Declaration	9/5	Until rescinded	Active
New York	State of Emergency	9/1	Until rescinded	Active
	Presidential Emergency Declaration	9/2	Until rescinded	Active
	Presidential Major Disaster Declaration	9/5	Until rescinded	Active
Connecticut	Civil Preparedness Emergency	9/2	Until rescinded	Active

Sources: State government, White House, and Federal Motor Carrier Safety Administration websites.



FEDERAL WAIVERS

- **EPA Gasoline RVP Requirements:** On September 2, EPA issued a second [waiver](#) of Reid Vapor Pressure (RVP) requirements in Louisiana and Mississippi to help reduce fuel supply shortages as part of EPA's response to Hurricane Ida. Under this temporary waiver, regulated entities may produce, sell, and distribute higher-volatility winter gasoline in Louisiana and Mississippi with an RVP of no more than 11.5 pounds per square inch (psi) before the addition of ethanol. The waiver is effective immediately and will continue through September 15.
 - EPA's September 2 waiver supersedes its first [waiver](#) issued August 30 which allowed for the sale of winter gasoline with an RVP of no more than 11.5 psi after the addition of ethanol.
- **EPA Ultra Low Sulfur Diesel Fuel Requirements:** On September 7, the Environmental Protection Agency (EPA) issued a [waiver](#) for ultra-low sulfur diesel requirements at Port Fourchon, Louisiana, in order to address fuel supply constraints caused by Hurricane Ida. The waiver allows for the sale at Port Fourchon of higher-sulfur diesel that exceeds the 15 parts per million standard (normally reserved for ocean-going vessels) for use in any marine vessel, non-road vessel, or non-road equipment. The waiver begins September 7 and expires September 16.
- **IRS Dyed Diesel:** On September 1, the Internal Revenue Service (IRS) [announced](#) that, in response to shortages of undyed diesel fuel caused by Hurricane Ida, it will not impose a penalty when dyed diesel fuel is sold for use or used on the highway for a number of parishes in the state of Louisiana. This penalty relief is available to any person that sells or uses dyed fuel for highway use and goes into effect as of August 29 and will remain in effect through September 15. The affected parishes are:
 - Ascension, Assumption, East Baton Rouge, East Feliciana, Iberia, Iberville, Jefferson, Lafourche, Livingston, Orleans, Plaquemines, Pointe Coupee, St. Bernard, St. Charles, St. Helena, St. James, St. John the Baptist, St. Martin, St. Mary, St. Tammany, Tangipahoa, Terrebonne, Washington, West Baton Rouge, and West Feliciana.
- **PHMSA Operator Qualifications Requirements:** On August 28, the Pipeline and Hazardous Materials Safety Administration (PHMSA) issued a [Stay of Enforcement](#) to all liquefied natural gas facilities and interstate gas and hazardous liquid pipeline operators affected by Hurricane Ida. The Stay of Enforcement alerts operators that PHMSA will temporarily relax enforcement of certain regulations related to operator qualifications and employment drug testing requirements to remove obstacles that would prevent safe and rapid recovery efforts. The Stay of Enforcement remains in effect for 45 days or until rescinded or extended by PHMSA.

STATE WAIVERS

- **Mississippi State Gasoline RVP Requirements:** On September 1, the Mississippi Department of Agriculture & Commerce issued a waiver for RVP specifications related to gasoline and gasoline blends. From September 1 – September 15, the waiver allows the sale of fuel with a Reid Vapor Pressure of no more than 11.5 psi after the addition of ethanol. The exemption to normal RVP requirements will expire on September 16. The waiver, in addition to the one issued by the EPA on August 30, is intended to allow for a greater supply of gasoline for sale in the state.

- **Louisiana Expedited Fuel Imports:** On September 4, the Louisiana Department of Revenue issued a [waiver](#) for fuel importers that expedited certain application processes and waived certain bond requirements in order to address fuel supply constraints caused by Hurricane Ida. The waiver remains in effect until rescinded.
- **Louisiana Dyed Diesel Waiver:** On September 1, following the announcement by the U.S. Internal Revenue Service (IRS) that it will waive penalties for the sale or use of dyed diesel on the highway in certain Louisiana parishes, the Louisiana Department of Revenue issued a [waiver](#) for state-level penalties on selling or using tax-exempt dyed diesel fuel on the highway. The Louisiana waiver uses the IRS timeline and goes into effect as of August 29 and will remain in effect through September 15.
- **Louisiana State Bridge Tolls:** On August 27, the Louisiana State Department of Transportation and Development issued a [Secretary's Emergency Order](#) suspending all tolls under the operation and control of the state of Louisiana, specifically LA 1 Toll Bridge from Leesville to Grand Isle and Port Fourchon. The order remains in effect until rescinded.
- **Louisiana State Weight Restrictions:** On August 27, the Louisiana State Department of Transportation and Development issued a [Weight Restriction Waiver](#) suspending certain vehicle size and weight restrictions in order to assist in hurricane response and recovery efforts. The waiver remains in effect through September 24 unless terminated sooner.

