

USGS The National Map: National Boundaries Dataset, 3-DEP Elevation Program, Geographic Names Information System, National Hydrography Dataset, National Land Cover Database, National Structures Dataset, and National Transportation Dataset; USGS Global Ecosystems; U.S. Census Bureau TIGER/Line data; USFS Road Data; Natural Earth Data; U.S. Department of State Humanitarian Information Unit; and NOAA National Centers for Environmental Information, U.S. Coastal Relief Model. Data refreshed May, 2020.

EXPLANATION

- PROPOSED POWERLINE
- PROPOSED ACCESS ROAD
- PROJECT AREA
- RESIDENTIAL STRUCTURES

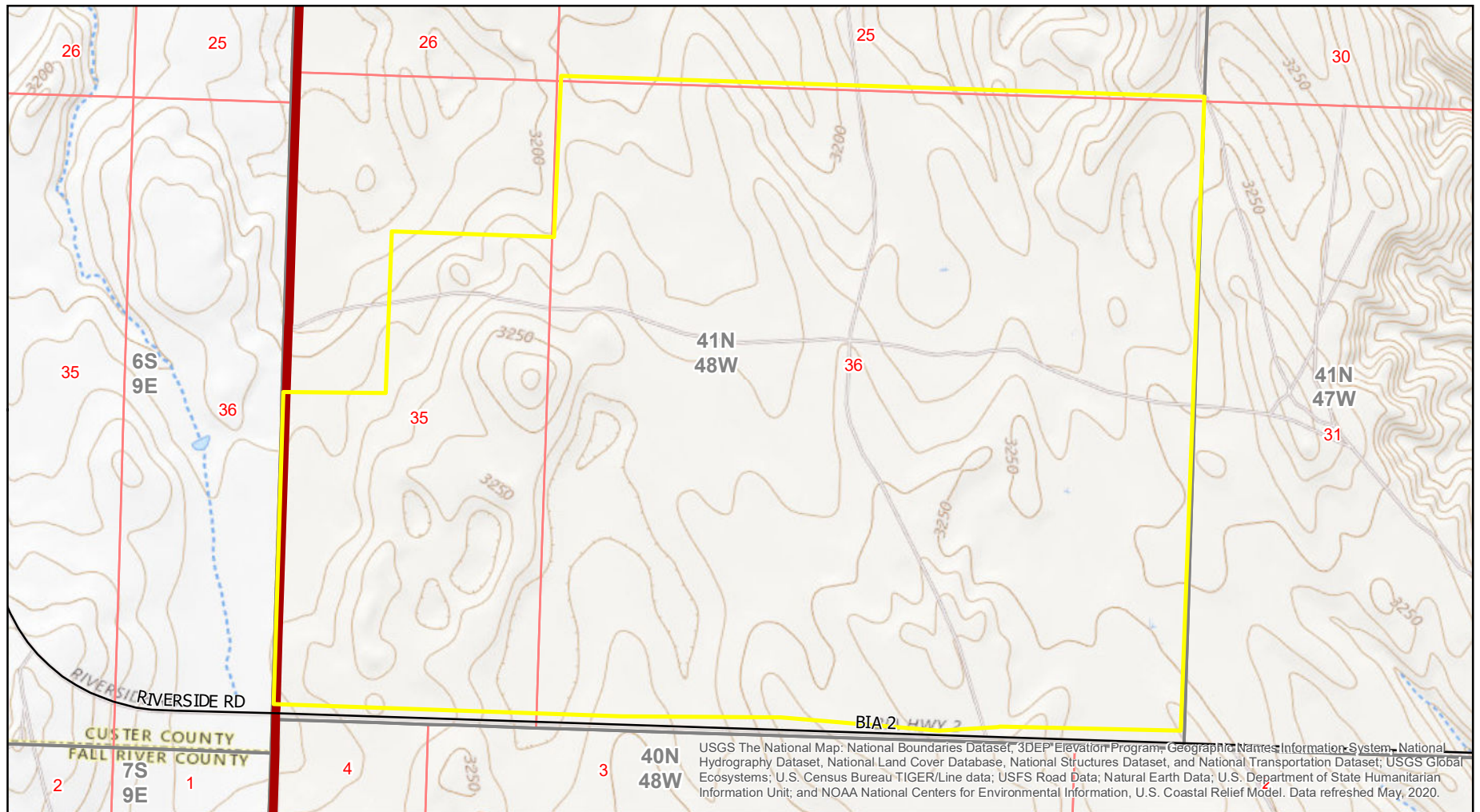


FIGURE 2-1
PROJECT AREA OVERVIEW
LOOKOUT SOLAR PARK I
CUSTER & OGLALA LAKOTA COUNTIES, SD

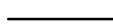


Drawn By: BR | Checked By: JW | Scale: 1" = 1 Mile | Date: 7/8/21 | File: Fig2-1_ProjectOverview

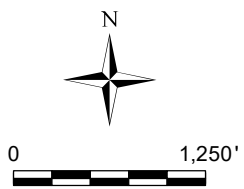
I:\TRIHEDRO\COMMENTS\LOOKOUTSOLARPARK\GIS\MAPPING\NEPA_EA\LOOKOUT_EA.APRX

\\TRIHYRO.COM\CLIENTS\TONI\LOOKOUTSOLAR\PARK1\S\S\MAPPING\NEPA_EA\FIG2-2_SOLARFARMLOCATION.MXD



EXPLANATION

-  STATE/FEDERAL HIGHWAY
-  PROJECT AREA
-  RESERVATION BOUNDARY



Trihydro
CORPORATION

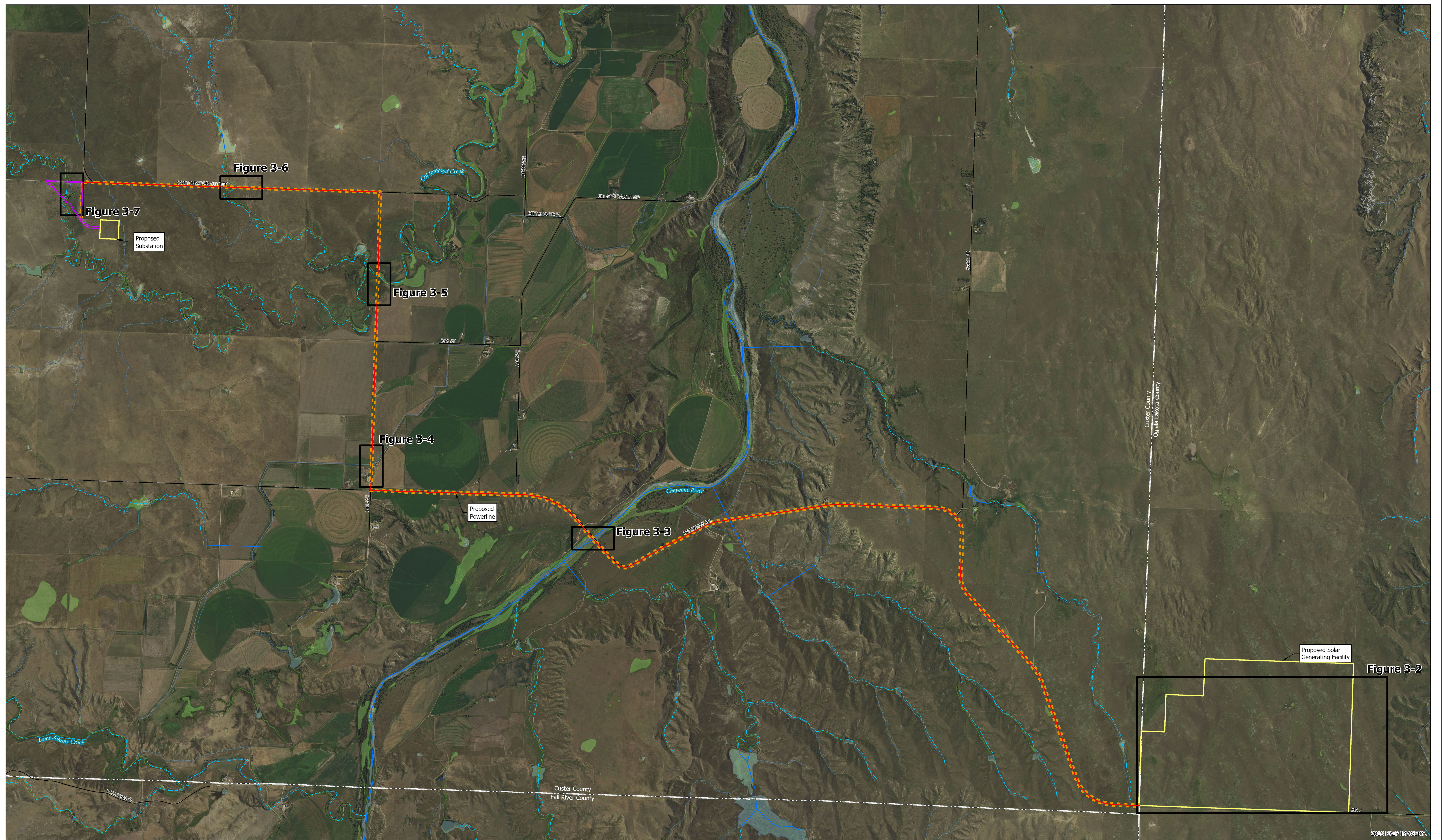
1252 Commerce Drive
Laramie, WY 82070
www.trihydro.com
(P) 307/745.7474 (F) 307/745.7729

FIGURE 2-2

SOLAR GENERATING FACILITY OVERVIEW

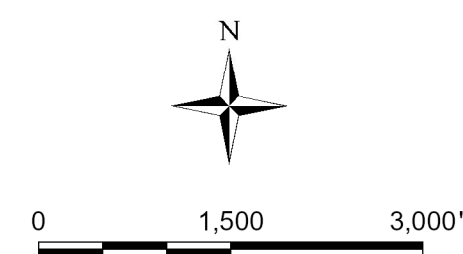
**LOOKOUT SOLAR PARK I
CUSTER & OGLALA LAKOTA COUNTIES, SD**

Drawn By: BR	Checked By: JW	Scale: 1" = 1,250'	Date: 7/8/21	File: Fig2-2_SolarFarmLocation.mxd
--------------	----------------	--------------------	--------------	------------------------------------



EXPLANATION

- | | |
|--|--|
| <ul style="list-style-type: none"> — PROPOSED ACCESS ROAD - - - PROPOSED POWERLINE - - - RIGHT OF WAY BUFFER (33 & 50 FEET) — NATIONAL HYDROGRAPHY DATASET (USGS FEB. 2016) — PERENNIAL STREAM - - - INTERMITTENT STREAM | <p>NATIONAL WETLAND INVENTORY (USFWS OCT. 2017)</p> <ul style="list-style-type: none"> ■ FRESHWATER EMERGENT WETLAND ■ FRESHWATER FORESTED/SHRUB WETLAND ■ FRESHWATER POND ■ LAKE ■ RIVERINE |
|--|--|



Trihydro
CORPORATION

1252 Commerce Drive
Laramie, WY 82070
www.trihydro.com
(P) 307.745.7474 (F) 307.745.7729

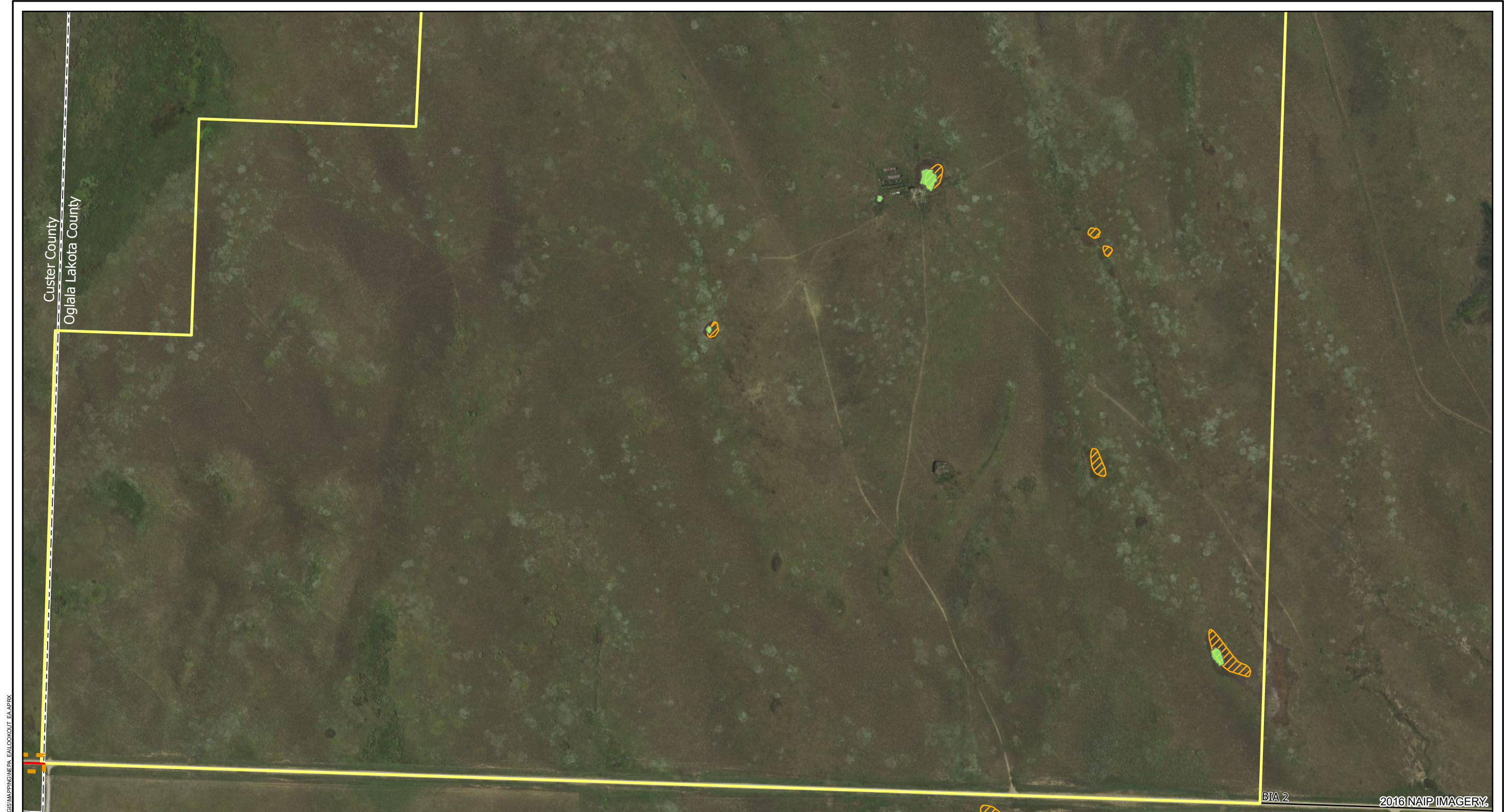
FIGURE 3-1

**AQUATIC RESOURCES INVENTORY OF THE
PROJECT AREA AND TRANSMISSION LINE ROUTE**

**LOOKOUT SOLAR PARK I
CUSTER & OGLALA LAKOTA COUNTIES, SD**

Drawn By: BR	Checked By: ES	Scale: 1" = 1,500'	Date: 9/17/19	File: Fig3-1_ARI_Overview
--------------	----------------	--------------------	---------------	---------------------------

2016 NXP IMAGES









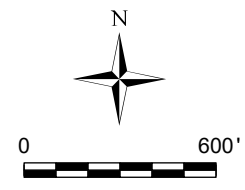
\TRIHYDRO\COM\PROJECTS\LOOKOUTSOLARPARK\GIS\MAPPING\NEPA_EA\LOOKOUT_EA.APX

BTA 2

2016 NAIP IMAGERY

EXPLANATION

- | | |
|--|--|
|  PROPOSED POWERLINE |  FRESHWATER EMERGENT WETLAND |
|  RIGHT OF WAY BUFFER (33 & 50 FEET) |  NATIONAL WETLAND INVENTORY (USFWS OCT. 2017) |
|  NATIONAL WETLAND INVENTORY (USFWS OCT. 2017) |  FIELD-DELINEATED WETLANDS (NON-JURISDICTIONAL) |




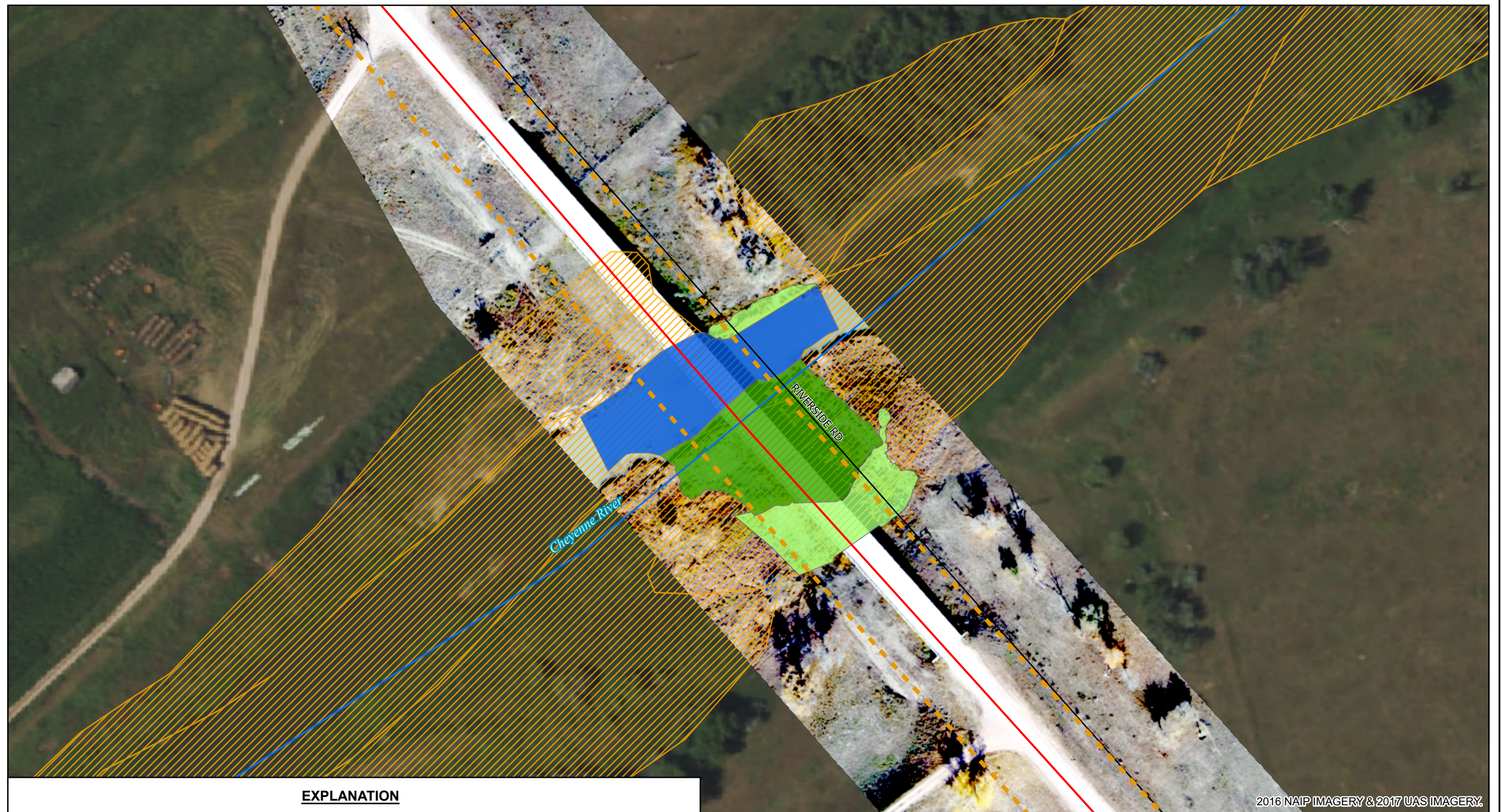

 1252 Commerce Drive
 Laramie, WY 82070
 www.trihydro.com
 (P) 307/745.7474 (F) 307/745.7729










FIGURE 3-2			
AQUATIC RESOURCES OF THE PROJECT AREA			
LOOKOUT SOLAR PARK I			
CUSTER & OGLALA LAKOTA COUNTIES, SD			
Drawn By: BR	Checked By: ES	Scale: 1" = 600'	Date: 9/17/19
File: Fig3-2_WetlandsSolarFarm			

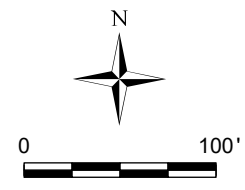
TRIHYDRO.COM\CLIENTS\LOOKOUTSOLARPARK\GIS\MAPPING\NEPA_EA\LOOKOUT_EA.APRX



2016 NAIP IMAGERY & 2017 UAS IMAGERY.

EXPLANATION

- | | |
|---|--|
|  PROPOSED POWERLINE |  FIELD-DELINEATED WETLANDS |
|  RIGHT OF WAY BUFFER (33 & 50 FEET) |  FRESHWATER EMERGENT WETLAND |
|  NATIONAL HYDROGRAPHY DATASET (USGS FEB. 2016) |  SHRUB SHRUB WETLAND |
|  PERENNIAL STREAM |  RIVERINE |
|  NATIONAL WETLAND INVENTORY (USFWS OCT. 2017) | |



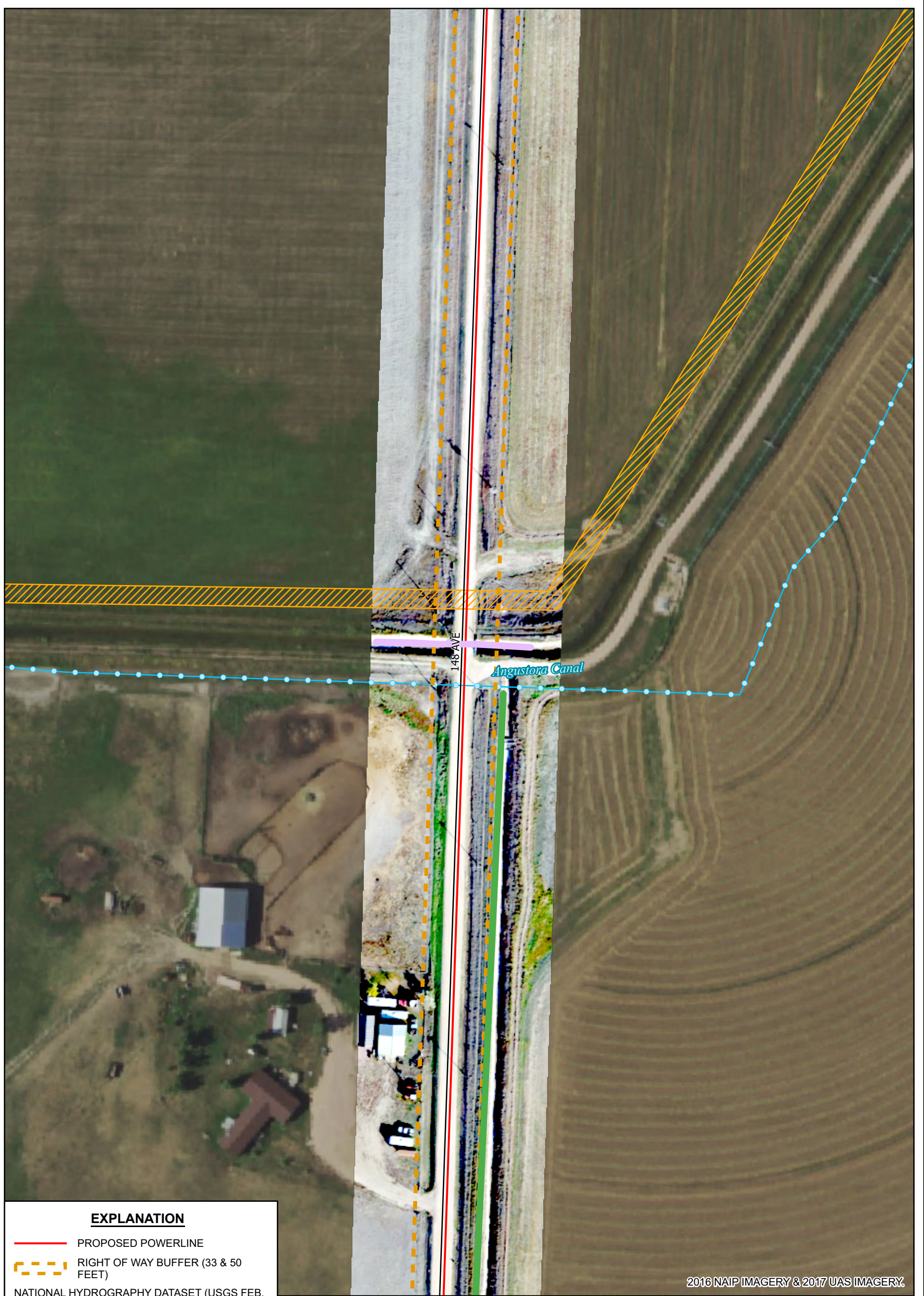

1252 Commerce Drive
Laramie, WY 82070
www.trihydro.com
(P) 307/745.7474 (F) 307/745.7729

FIGURE 3-3

CHEYENNE RIVER CROSSING

LOOKOUT SOLAR PARK I
CUSTER & OGLALA LAKOTA COUNTIES, SD

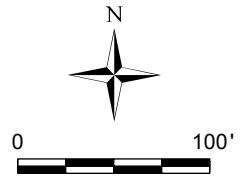
Drawn By: BR | Checked By: ES | Scale: 1" = 100' | Date: 9/17/19 | File: Fig3-3_WetlandsLandscape



2016 NAIP IMAGERY & 2017 UAS IMAGERY.

EXPLANATION

- PROPOSED POWERLINE
- - - RIGHT OF WAY BUFFER (33 & 50 FEET)
- NATIONAL HYDROGRAPHY DATASET (USGS FEB. 2016)
- CANAL
- ▨ NATIONAL WETLAND INVENTORY (USFWS OCT. 2017)
- ▨ FIELD-DELINEATED WETLANDS
- DITCH
- ANGUSTORA CANAL

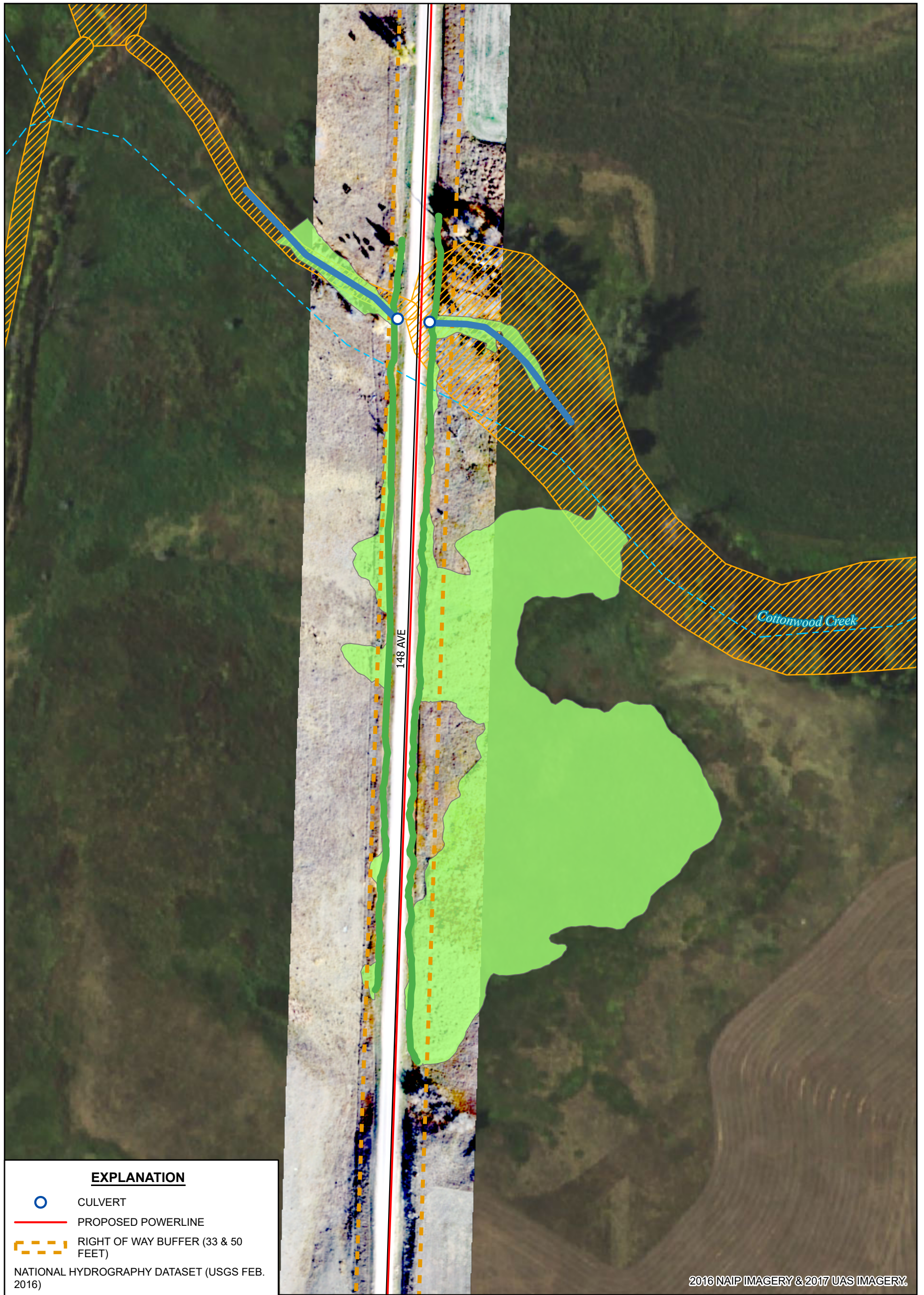



Trihydro
 CORPORATION
 1252 Commerce Drive
 Laramie, WY 82070
 www.trihydro.com
 (P) 307/745.7474 (F) 307/745.7729

FIGURE 3-4			
ANGUSTORA CANAL CROSSING			
LOOKOUT SOLAR PARK I CUSTER & OGLALA LAKOTA COUNTIES, SD			
Drawn By: BR	Checked By: ES	Scale: 1" = 100'	Date: 9/17/19
File: Fig3-4_WetlandsPortrait			









\TRIHYRO.COM\CLIENTS\LOOKOUT SOLAR PARK I\ASB\GIS\MAPS\ENGINEER_FINAL\LOOKOUT_LA.PRX

W:\TRIHYDRO\COMMENTS\LOOKOUT\SOLAR\BARRIERS\WATERENGINEER_EAN\LOOKOUT_LAPARK



2016 NAIP IMAGERY & 2017 UAS IMAGERY

EXPLANATION

-  CULVERT
-  PROPOSED POWERLINE
-  RIGHT OF WAY BUFFER (33 & 50 FEET)
- NATIONAL HYDROGRAPHY DATASET (USGS FEB. 2016)
-  INTERMITTENT STREAM
-  NATIONAL WETLAND INVENTORY (USFWS OCT. 2017)
- FIELD-DELINEATED WETLANDS
-  INTERMITTENT STREAM
-  DITCH
-  FRESHWATER EMERGENT WETLAND

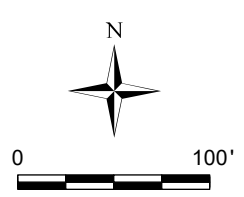


FIGURE 3-5

COTTONWOOD CREEK CROSSING

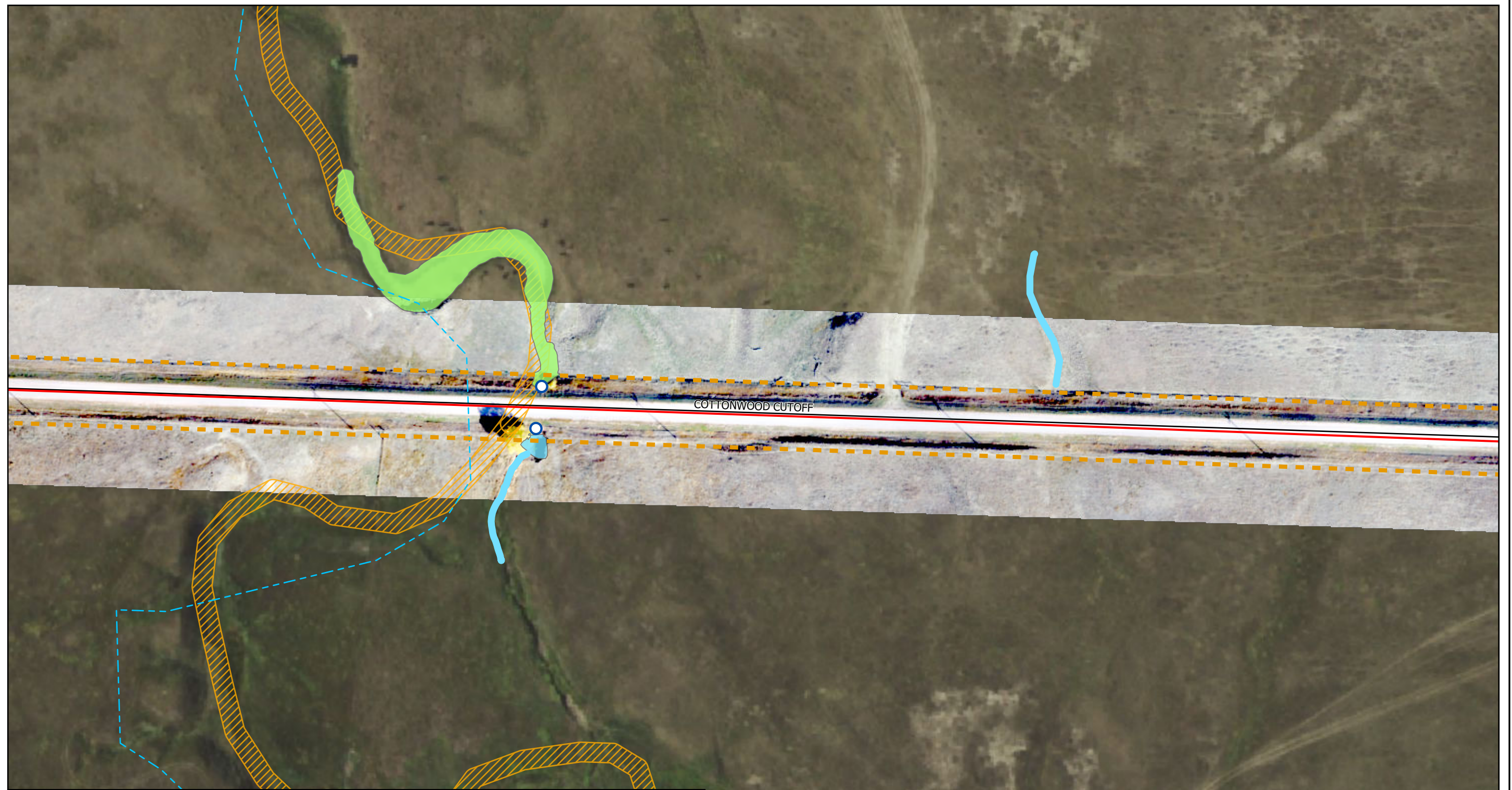
**LOOKOUT SOLAR PARK I
CUSTER & OGLALA LAKOTA COUNTIES, SD**



1252 Commerce Drive
Laramie, WY 82070
www.trihydro.com
(P) 307/745.7474 (F) 307/745.7729








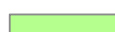

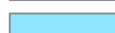
Drawn By: BR	Checked By: ES	Scale: 1" = 100'	Date: 9/17/19	File: Fig3-4_WetlandsPortrait
--------------	----------------	------------------	---------------	-------------------------------

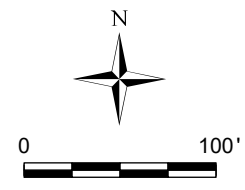
TRIHYDRO.COM\CLIENTS\LOOKOUTSOLARPARK\GIS\MAPPING\NEPA_EA\LOOKOUT_EA.APRX



2016 NAIP IMAGERY & 2017 UAS IMAGERY.

EXPLANATION

	CULVERT		NATIONAL WETLAND INVENTORY (USFWS OCT. 2017)
	PROPOSED POWERLINE		FIELD-DELINEATED WETLANDS
	RIGHT OF WAY BUFFER (33 & 50 FEET)		EPHEMERAL STREAM
	NATIONAL HYDROGRAPHY DATASET (USGS FEB. 2016)		FRESHWATER EMERGENT WETLAND
	INTERMITTENT STREAM		POND



Trihydro
CORPORATION
1252 Commerce Drive
Laramie, WY 82070
www.trihydro.com
(P) 307/745.7474 (F) 307/745.7729

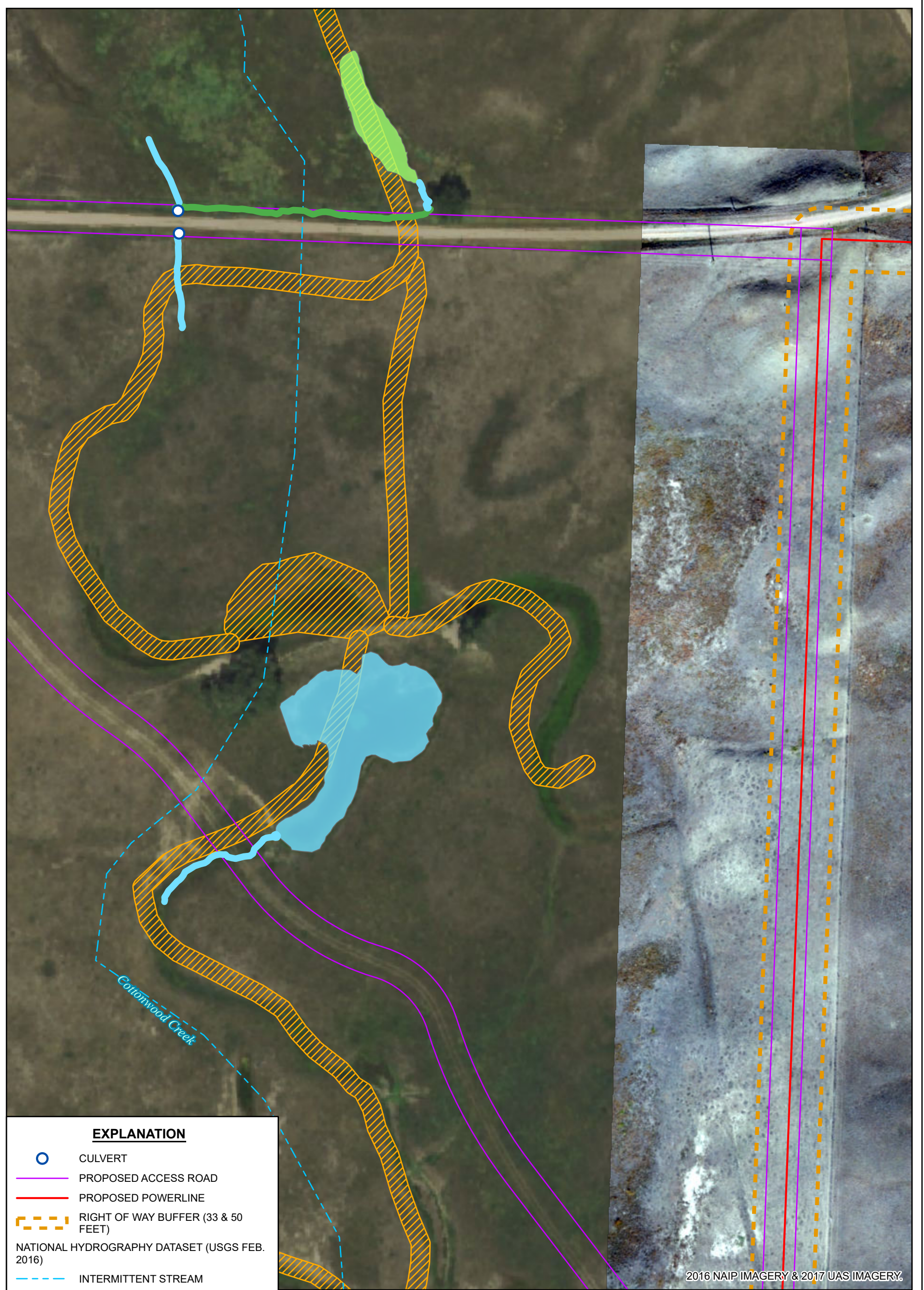
FIGURE 3-6

COTTONWOOD CUTOFF WETLAND CROSSING

**LOOKOUT SOLAR PARK I
CUSTER & OGLALA LAKOTA COUNTIES, SD**

Drawn By: BR	Checked By: ES	Scale: 1" = 100'	Date: 9/17/19	File: Fig3-3_WetlandsLandscape
--------------	----------------	------------------	---------------	--------------------------------

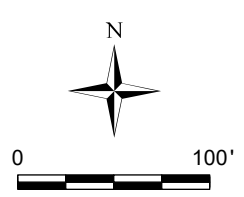
TRIHYDRO.COM\CLIENTS\LOOKOUTSOLARPARK\GIS\MAPPING\AREA_EAN\LOOKOUT_LAPARK



2016 NAIP IMAGERY & 2017 UAS IMAGERY

EXPLANATION

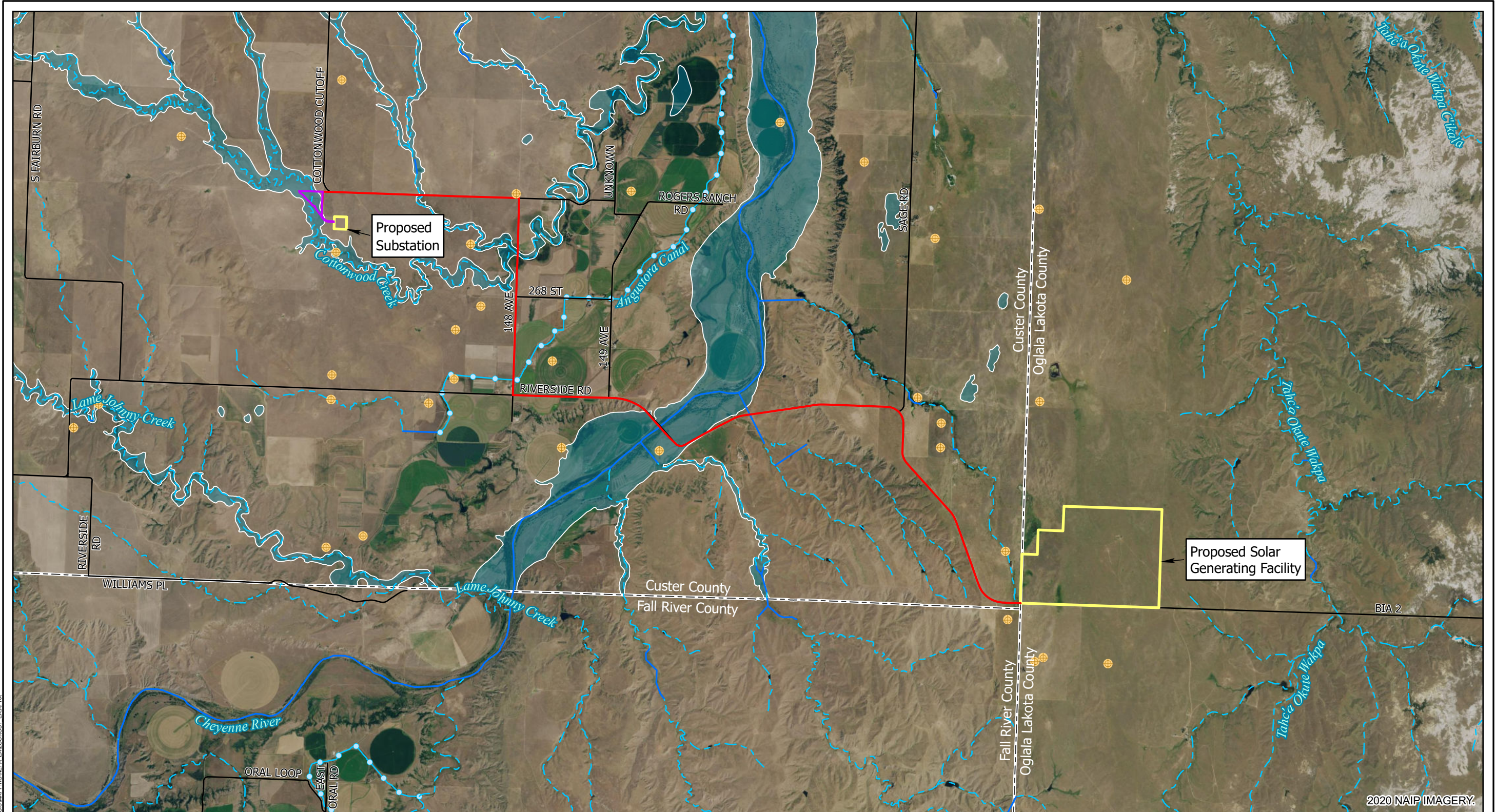
- CULVERT
- PROPOSED ACCESS ROAD
- PROPOSED POWERLINE
- RIGHT OF WAY BUFFER (33 & 50 FEET)
- NATIONAL HYDROGRAPHY DATASET (USGS FEB. 2016)
- INTERMITTENT STREAM
- NATIONAL WETLAND INVENTORY (USFWS OCT. 2017)
- FIELD-DELINEATED WETLANDS**
- EPHEMERAL STREAM
- DITCH
- FRESHWATER EMERGENT WETLAND
- POND



Trihydro
CORPORATION

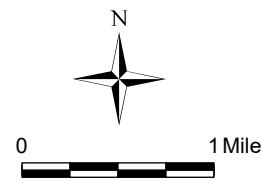
1252 Commerce Drive
Laramie, WY 82070
www.trihydro.com
(P) 307/745.7474 (F) 307/745.7729

FIGURE 3-7			
SUBSTATION ACCESS AREA WETLANDS			
LOOKOUT SOLAR PARK I			
CUSTER & OGLALA LAKOTA COUNTIES, SD			
Drawn By: BR	Checked By: ES	Scale: 1" = 100'	Date: 9/17/19
File: Fig3-4_WetlandsPortrait			



EXPLANATION

- WATER WELL (DENR 2019)
- PROPOSED ACCESS ROAD
- PROPOSED POWERLINE
- PROJECT AREA
- NATIONAL HYDROGRAPHY DATASET (USGS FEB. 2016)
- PERENNIAL STREAM
- INTERMITTENT STREAM
- CANAL
- 1% ANNUAL CHANCE FLOOD HAZARD (FEMA 2019)



Trihydro
CORPORATION
1252 Commerce Drive
Laramie, WY 82070
www.trihydro.com
(P) 307/745.7474 (F) 307/745.7729

FIGURE 3-8

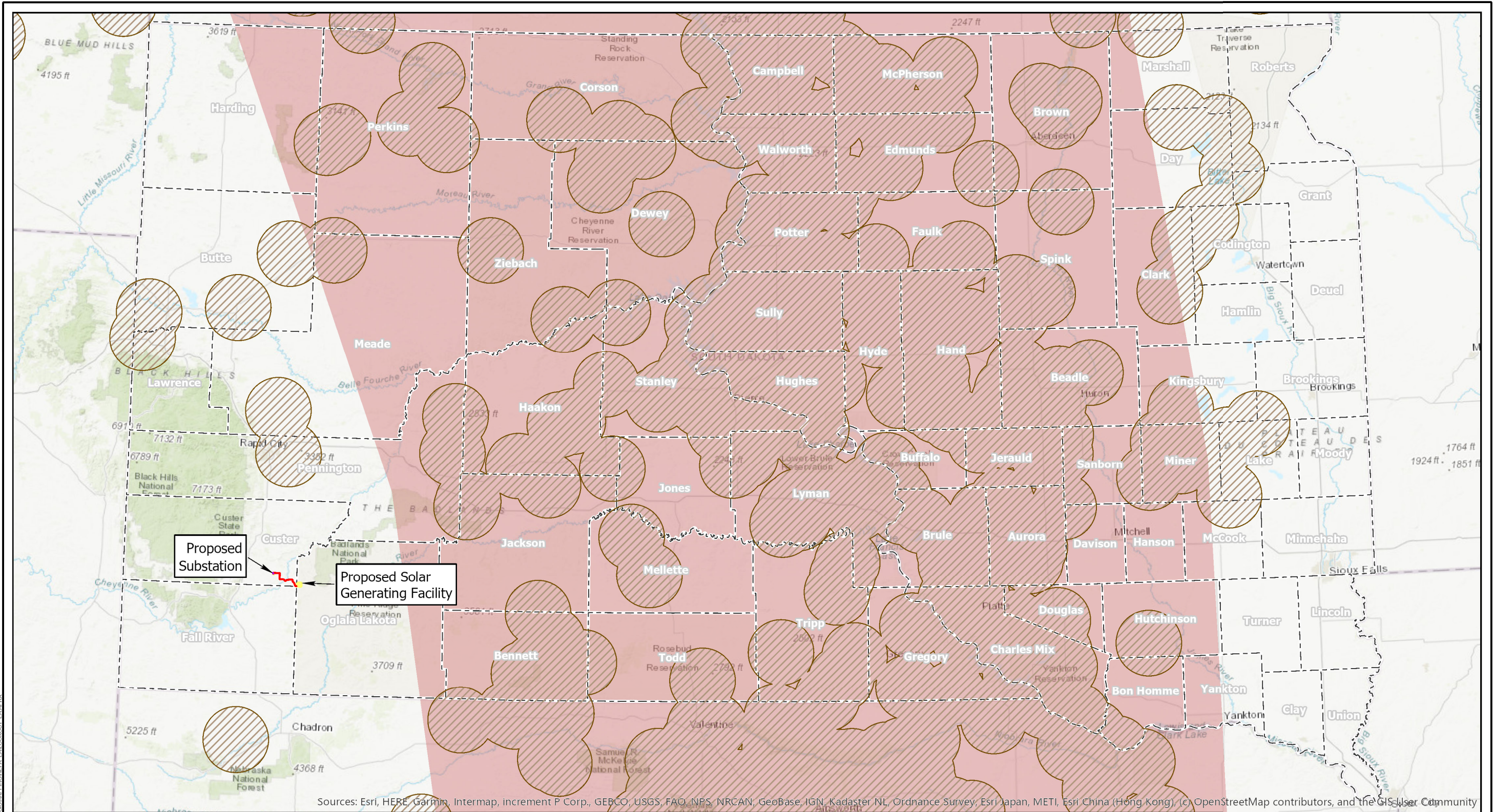
FEMA FLOOD ZONES IN THE PROJECT AREA

LOOKOUT SOLAR PARK I
CUSTER & OGLALA LAKOTA COUNTIES, SD

Drawn By: BR	Checked By: JW	Scale: 1" = 1 Mile	Date: 7/8/21	File: Fig3-8_Floodplains
--------------	----------------	--------------------	--------------	--------------------------

\\TRIHYRO.COM\CLIENTS\LOOKOUTSOLARPARK\GIS\MAPPING\NEPA_EA\LOOKOUT_EA\APRX

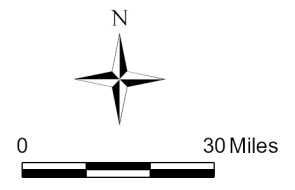
2020 NAIP IMAGERY.



Sources: Esri, HERE, Garmin, Intermap, increment P Corp., GEBCO, USGS, FAO, NPS, NRCAN, GeoBase, IGN, Kadaster NL, Ordnance Survey, Esri Japan, METI, Esri China (Hong Kong), (c) OpenStreetMap contributors, and the GIS User Community

EXPLANATION

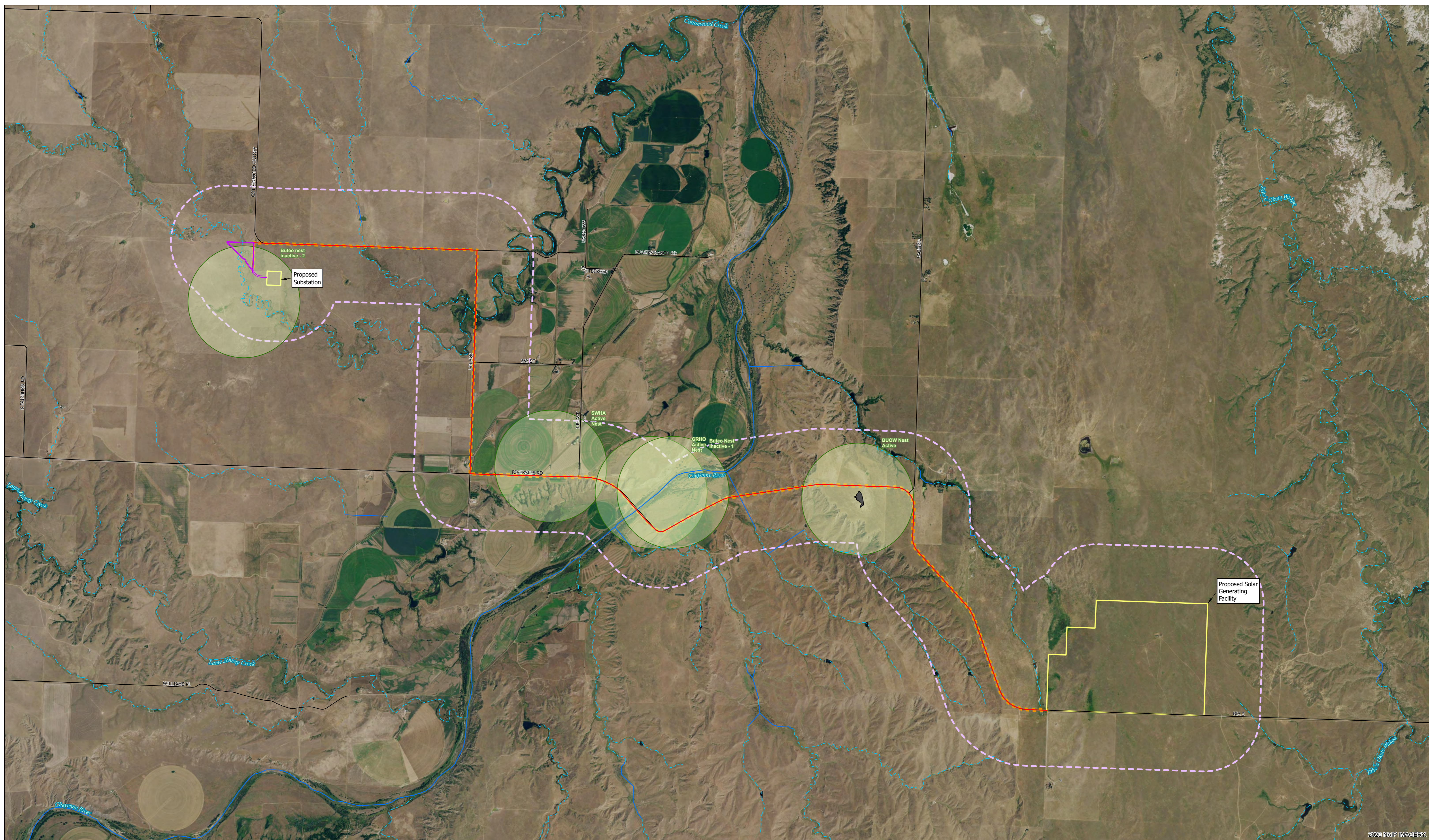
- PROPOSED ACCESS ROAD
- PROPOSED POWERLINE
- 10 MILE BUFFER OF WHOOPING CRANE SIGHTING
- WHOOPING CRANE MIGRATION CORRIDOR
- PROJECT AREA



1252 Commerce Drive
Laramie, WY 82070
www.trihydro.com
(P) 307/745.7474 (F) 307/745.7729

FIGURE 3-9
WHOOPING CRANE MIGRATION CORRIDOR
LOOKOUT SOLAR PARK I
CUSTER & OGLALA LAKOTA COUNTIES, SD

\\TRIHYRO.COM\Clients\SD\LOOKOUTSOLARPARK\GIS\MAPS\FIGURE 3-9_WhoopingCranes.aprx



2020 NAP IMAGERY

EXPLANATION

- PROPOSED ACCESS ROAD
- PROPOSED POWERLINE
- NATIONAL HYDROGRAPHY DATASET (USGS FEB. 2016)
- PERENNIAL STREAM
- - - INTERMITTENT STREAM
- PROJECT AREA
- RIGHT OF WAY BUFFER (33 & 50 FEET)
- 1/2 MILE BUFFER ZONE AROUND ACCESS ROAD, PROPERTY BOUNDARIES, AND POWER LINES
- BLACK-TAILED PRAIRIE DOG COLONY
- APPROXIMATE RAPTOR NEST LOCATION

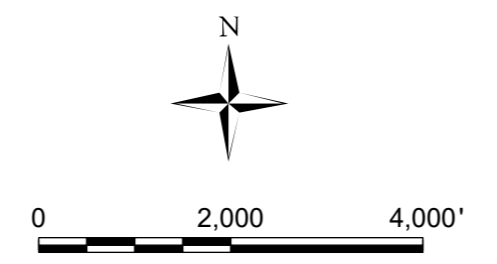


FIGURE 3-10

RAPTOR NESTS IN THE PROJECT AREA

**LOOKOUT SOLAR PARK I
CUSTER & OGLALA LAKOTA COUNTIES, SD**

1252 Commerce Drive
Laramie, WY 82070
www.trihydro.com
(P) 307.745.7474 (F) 307.745.7729



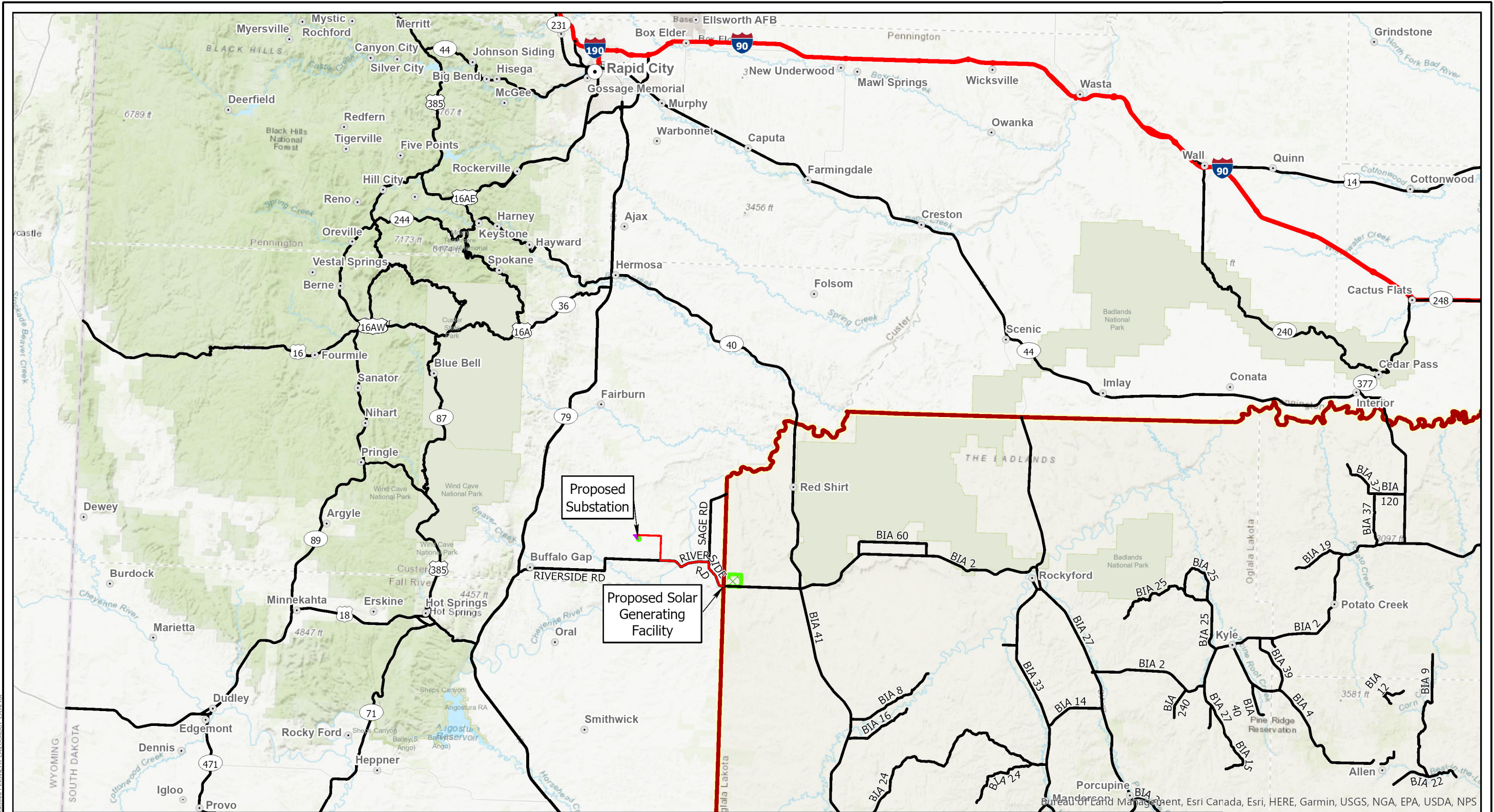
**Figure 3-15. View of the Southern Boundary of the Solar Generating Facility from BIA
Route 2
Facing North**



**Figure 3-16. View of the Approximate Middle of the Solar Generating Facility
Facing South**

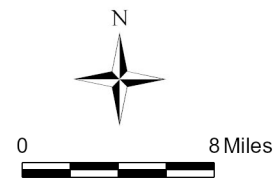


**Figure 3-17. View of the Northern Boundary of the Solar Generating Facility
Facing Southwest**



EXPLANATION

- PROPOSED POWERLINE
- PROPOSED ACCESS ROAD
- INTERSTATE HIGHWAY
- STATE/FEDERAL HIGHWAY
- XXXXXX PROJECT AREA
- RESERVATION BOUNDARY
- STATE PARK OR NATIONAL PARK LAND



Trihydro
CORPORATION
1252 Commerce Drive
Laramie, WY 82070
www.trihydro.com
(P) 307/745.7474 (F) 307/745.7729

FIGURE 3-14

TRANSPORTATION NETWORK

LOOKOUT SOLAR PARK I
CUSTER & OGLALA LAKOTA COUNTIES, SD

Drawn By: BR	Checked By: ES	Scale: 1" = 8 Miles	Date: 9/17/19
File: Fig3-14_Transportation			

\\TRIHYRO.COM\Clients\LOOKOUT\Solar\AR\BARRICKS\MAPS\FIGURE 3-14_TRANSPORTATION.FXD