

Copyright © 2013 National Geographic Society, i-cubed

EXPLANATION

- PROPOSED POWERLINE
- PROPOSED ACCESS ROAD
- PROJECT AREA
- RESIDENTIAL STRUCTURES

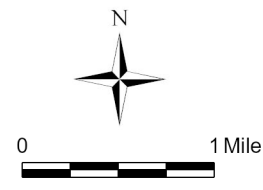
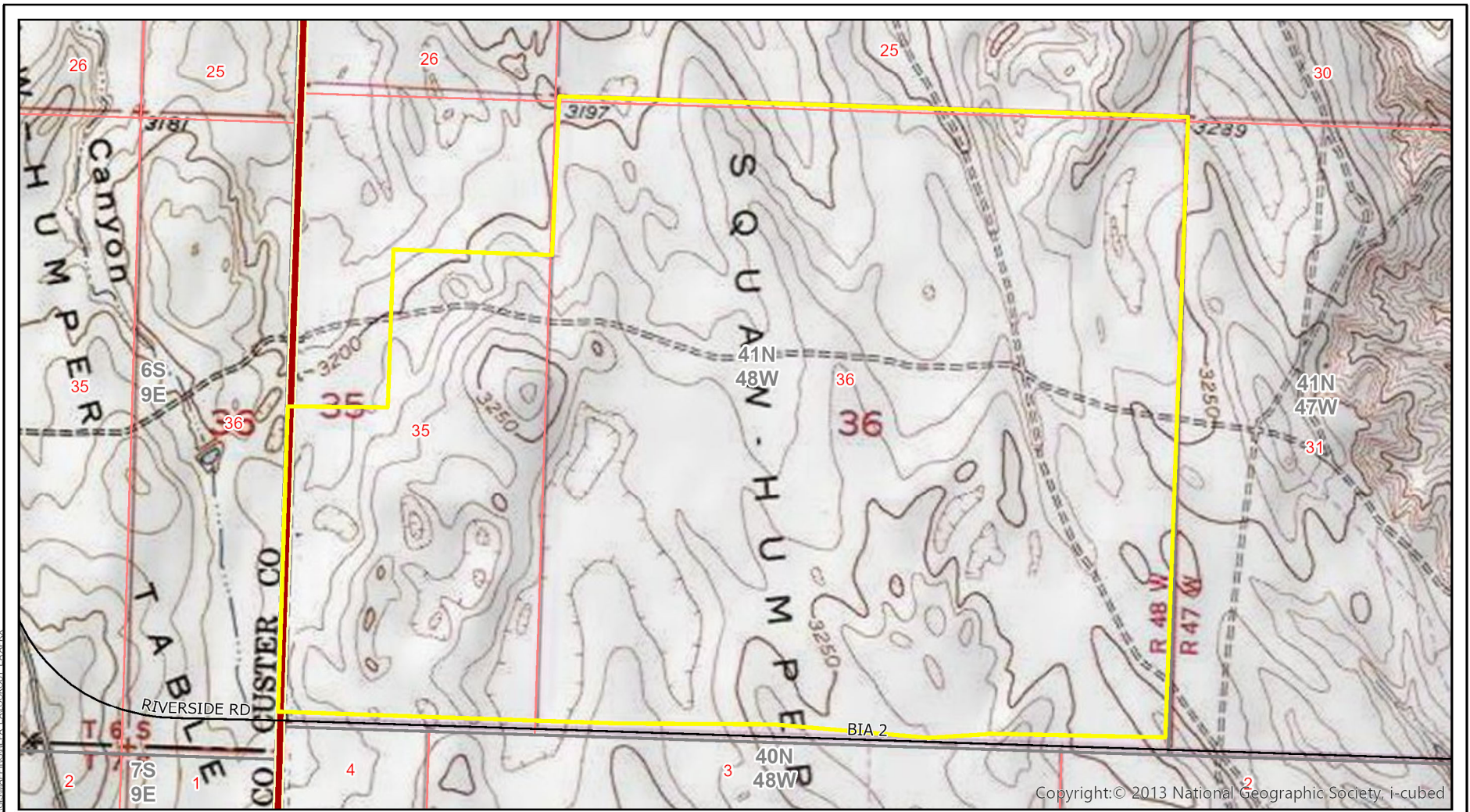





FIGURE 2-1
PROJECT AREA OVERVIEW
LOOKOUT SOLAR PARK I
CUSTER & OGLALA LAKOTA COUNTIES, SD

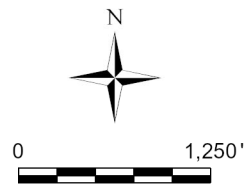
Drawn By: BR | Checked By: JW | Scale: 1" = 1 Mile | Date: 8/12/19 | File: Fig2-1_ProjectOverview

I:\TRIHYRO\COM\GIS\PROJECTS\LOOKOUT SOLAR\AR\AR\GCS\MAPS\FIGURE 2-1 PROJECT AREA OVERVIEW.FMAPX



EXPLANATION

-  STATE/FEDERAL HIGHWAY
-  PROJECT AREA
-  RESERVATION BOUNDARY



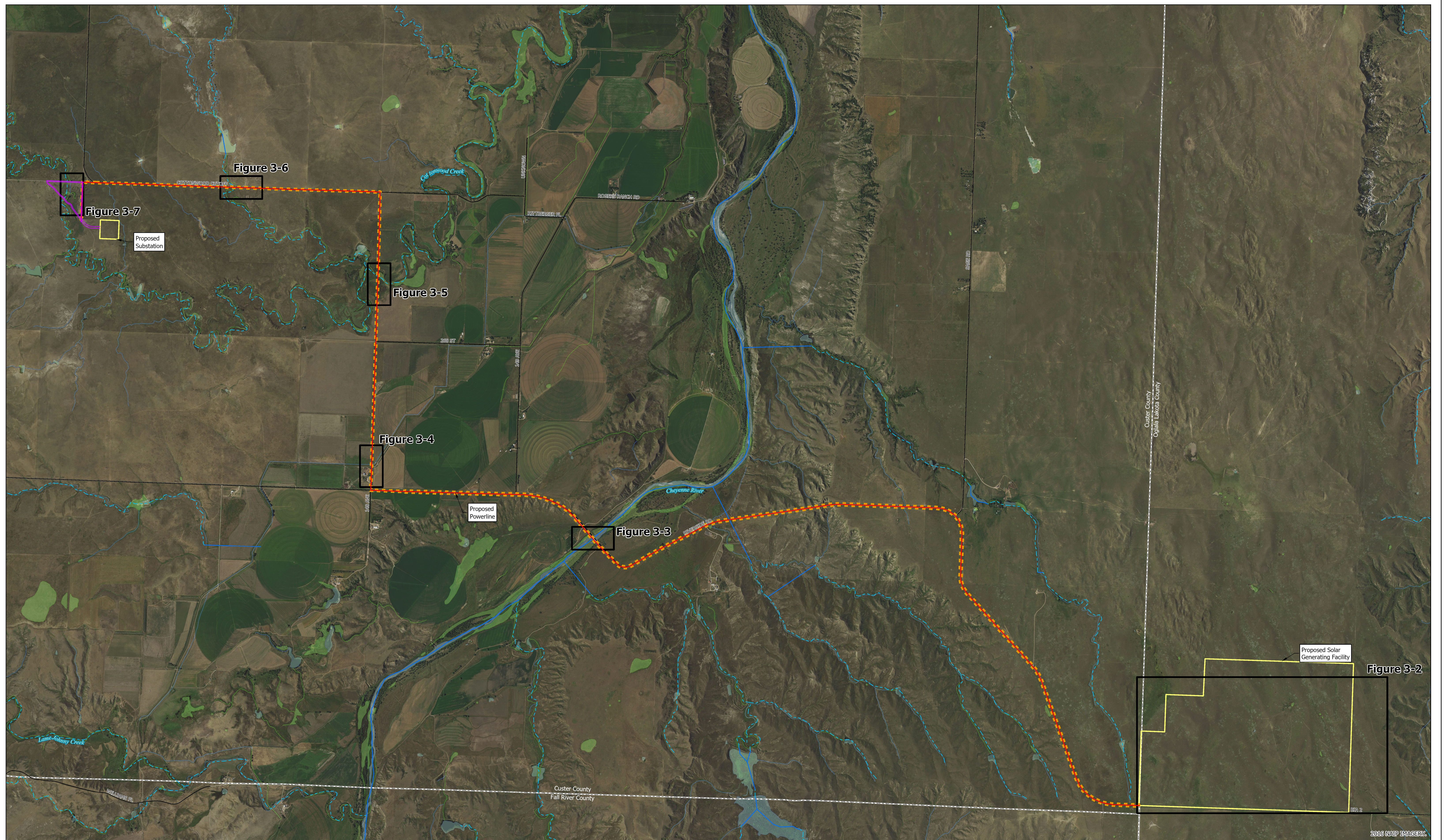
1252 Commerce Drive
Laramie, WY 82070
www.trihydro.com
(P) 307/745.7474 (F) 307/745.7729

FIGURE 2-2

SOLAR GENERATING FACILITY OVERVIEW

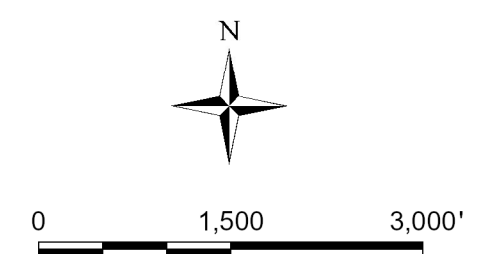
**LOOKOUT SOLAR PARK I
CUSTER & OGLALA LAKOTA COUNTIES, SD**

Drawn By: BR	Checked By: JW	Scale: 1" = 1,250'	Date: 8/12/19	File: Fig2-2_SolarFarmLocation
--------------	----------------	--------------------	---------------	--------------------------------



EXPLANATION

- | | |
|--|--|
| <ul style="list-style-type: none"> — PROPOSED ACCESS ROAD - - - PROPOSED POWERLINE - - - RIGHT OF WAY BUFFER (33 & 50 FEET) — NATIONAL HYDROGRAPHY DATASET (USGS FEB. 2016) — PERENNIAL STREAM - - - INTERMITTENT STREAM | <p>NATIONAL WETLAND INVENTORY (USFWS OCT. 2017)</p> <ul style="list-style-type: none"> ■ FRESHWATER EMERGENT WETLAND ■ FRESHWATER FORESTED/SHRUB WETLAND ■ FRESHWATER POND ■ LAKE ■ RIVERINE |
|--|--|



Trihydro
CORPORATION

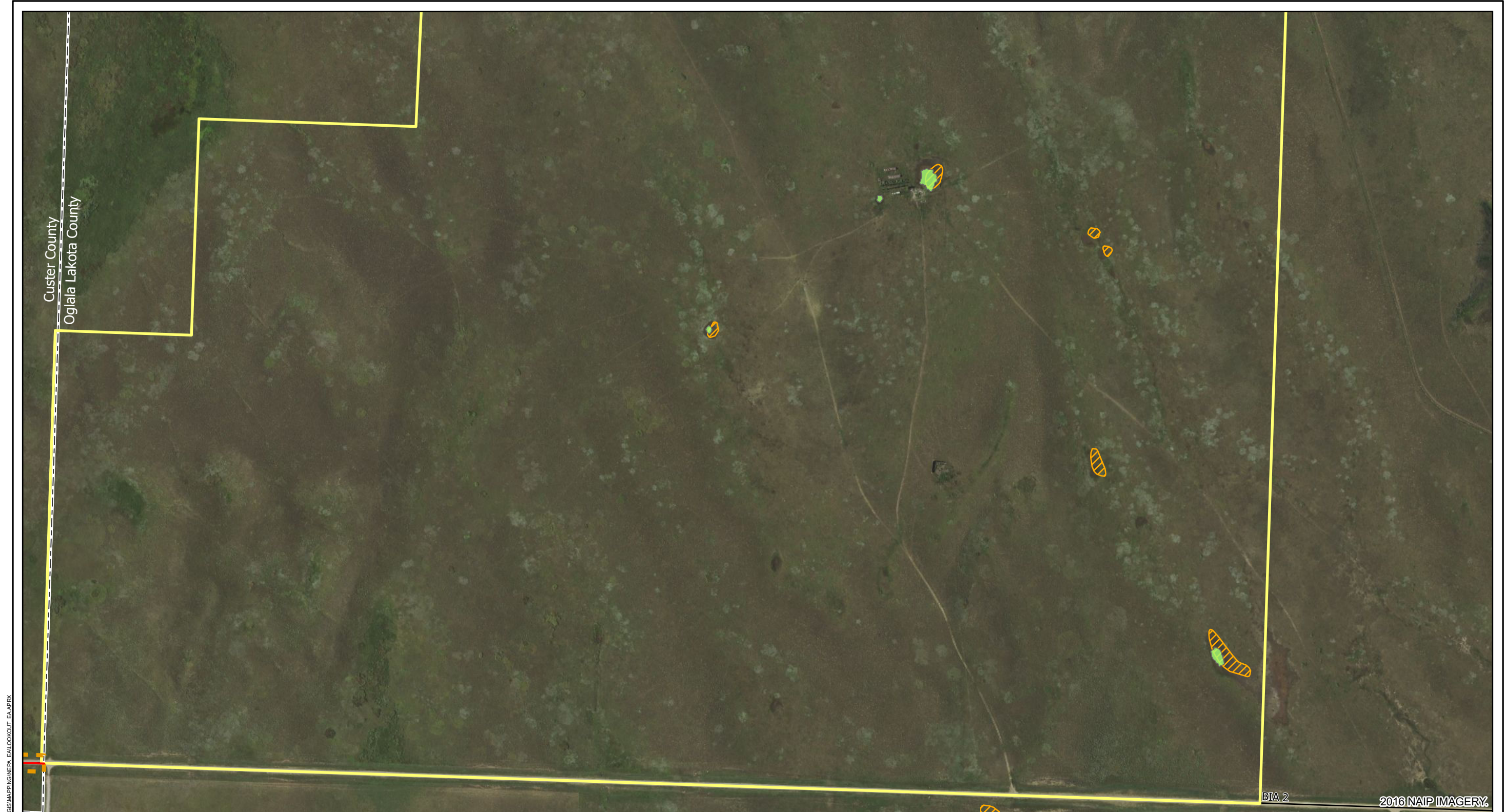
1252 Commerce Drive
Laramie, WY 82070
www.trihydro.com
(P) 307.745.7474 (F) 307.745.7729

FIGURE 3-1

**AQUATIC RESOURCES INVENTORY OF THE
PROJECT AREA AND TRANSMISSION LINE ROUTE**

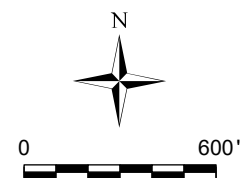
**LOOKOUT SOLAR PARK I
CUSTER & OGLALA LAKOTA COUNTIES, SD**


Drawn By: BR | Checked By: ES | Scale: 1" = 1,500' | Date: 9/17/19 | File: Fig3-1_ARI_Overview



EXPLANATION

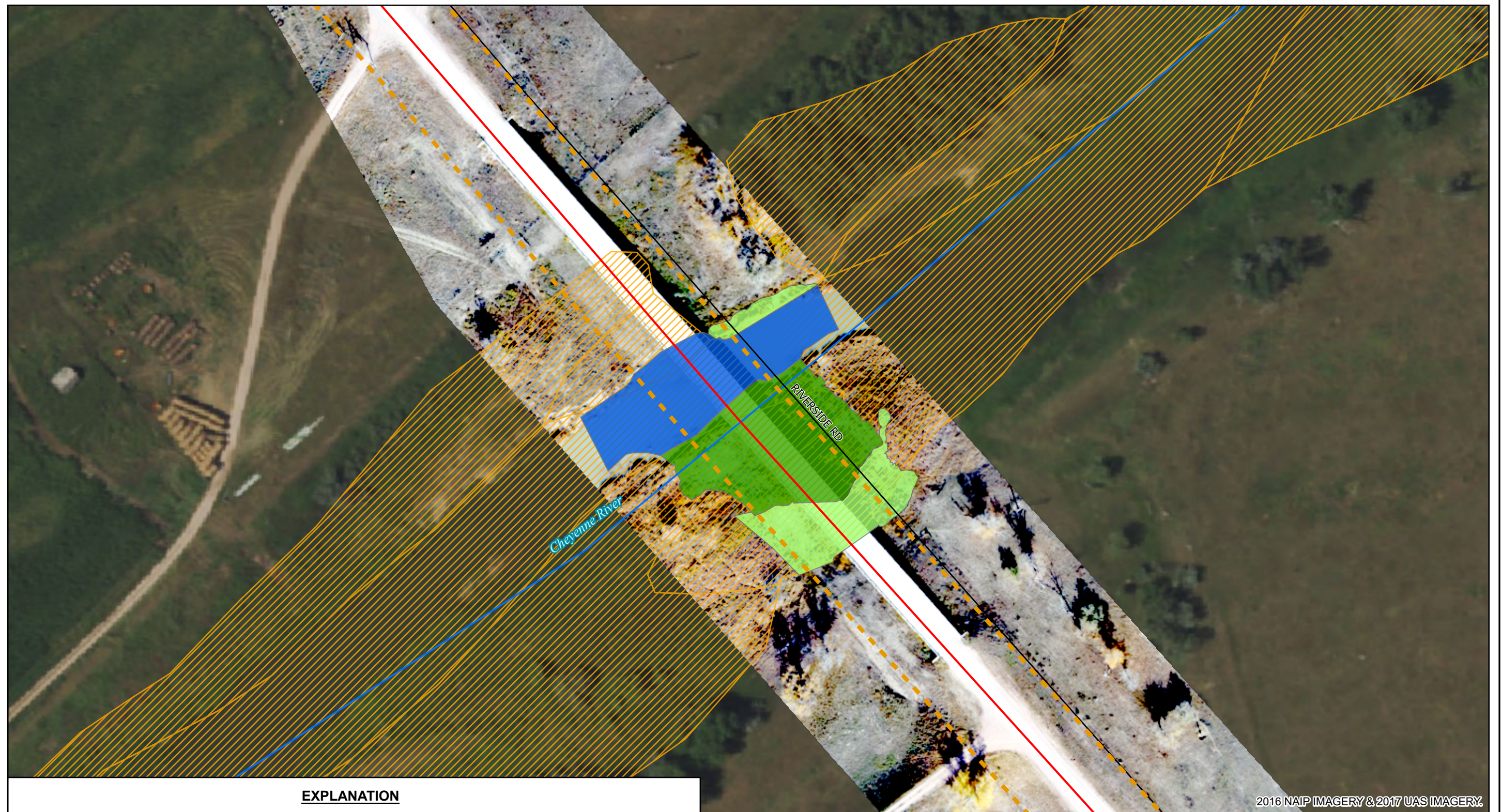
-  PROPOSED POWERLINE
-  RIGHT OF WAY BUFFER (33 & 50 FEET)
-  NATIONAL WETLAND INVENTORY (USFWS OCT. 2017)
-  FIELD-DELINEATED WETLANDS (NON-JURISDICTIONAL)
-  FRESHWATER EMERGENT WETLAND



 1252 Commerce Drive Laramie, WY 82070 www.trihydro.com (P) 307/745.7474 (F) 307/745.7729	FIGURE 3-2
	AQUATIC RESOURCES OF THE PROJECT AREA
LOOKOUT SOLAR PARK I CUSTER & OGLALA LAKOTA COUNTIES, SD	
Drawn By: BR	Checked By: ES
Scale: 1" = 600'	Date: 9/17/19
File: Fig3-2_WetlandsSolarFarm	







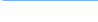

\TRIHYRO.COM\CLIENTS\LOOKOUTSOLARPARK\GIS\MAPPING\NEPA_EA\LOOKOUT_EA.APX

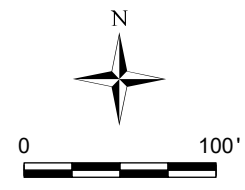
\\TRIHYRO.COM\CLIENTS\LOOKOUTSOLARPARK\GIS\MAPPING\NEPA_EA\LOOKOUT_EA_APRX



2016 NAIP IMAGERY & 2017 UAS IMAGERY.

EXPLANATION

- | | |
|---|--|
|  PROPOSED POWERLINE |  FRESHWATER EMERGENT WETLAND |
|  RIGHT OF WAY BUFFER (33 & 50 FEET) |  SHRUB SHRUB WETLAND |
|  NATIONAL HYDROGRAPHY DATASET (USGS FEB. 2016) |  RIVERINE |
|  PERENNIAL STREAM | |
|  NATIONAL WETLAND INVENTORY (USFWS OCT. 2017) | |



Trihydro
CORPORATION

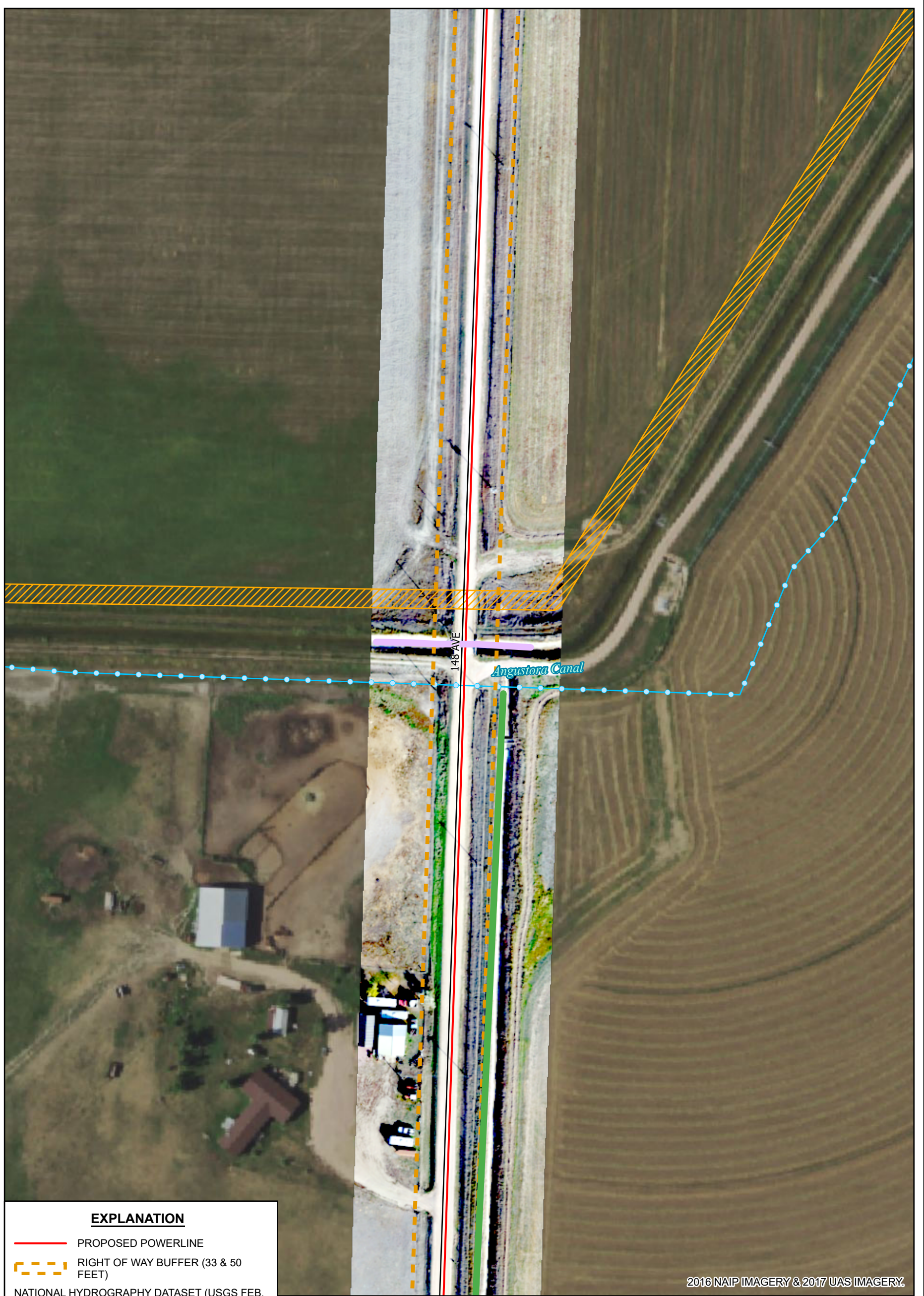
1252 Commerce Drive
Laramie, WY 82070
www.trihydro.com
(P) 307/745.7474 (F) 307/745.7729

FIGURE 3-3

CHEYENNE RIVER CROSSING








LOOKOUT SOLAR PARK I
CUSTER & OGLALA LAKOTA COUNTIES, SD

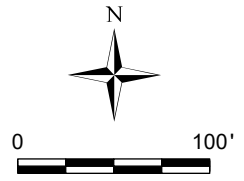
Drawn By: BR | Checked By: ES | Scale: 1" = 100' | Date: 9/17/19 | File: Fig3-3_WetlandsLandscape



2016 NAIP IMAGERY & 2017 UAS IMAGERY.

EXPLANATION

-  PROPOSED POWERLINE
-  RIGHT OF WAY BUFFER (33 & 50 FEET)
-  CANAL
-  NATIONAL WETLAND INVENTORY (USFWS OCT. 2017)
-  FIELD-DELINEATED WETLANDS
-  DITCH
-  ANGUSTORA CANAL



Trihydro
CORPORATION

1252 Commerce Drive
Laramie, WY 82070
www.trihydro.com
(P) 307/745.7474 (F) 307/745.7729

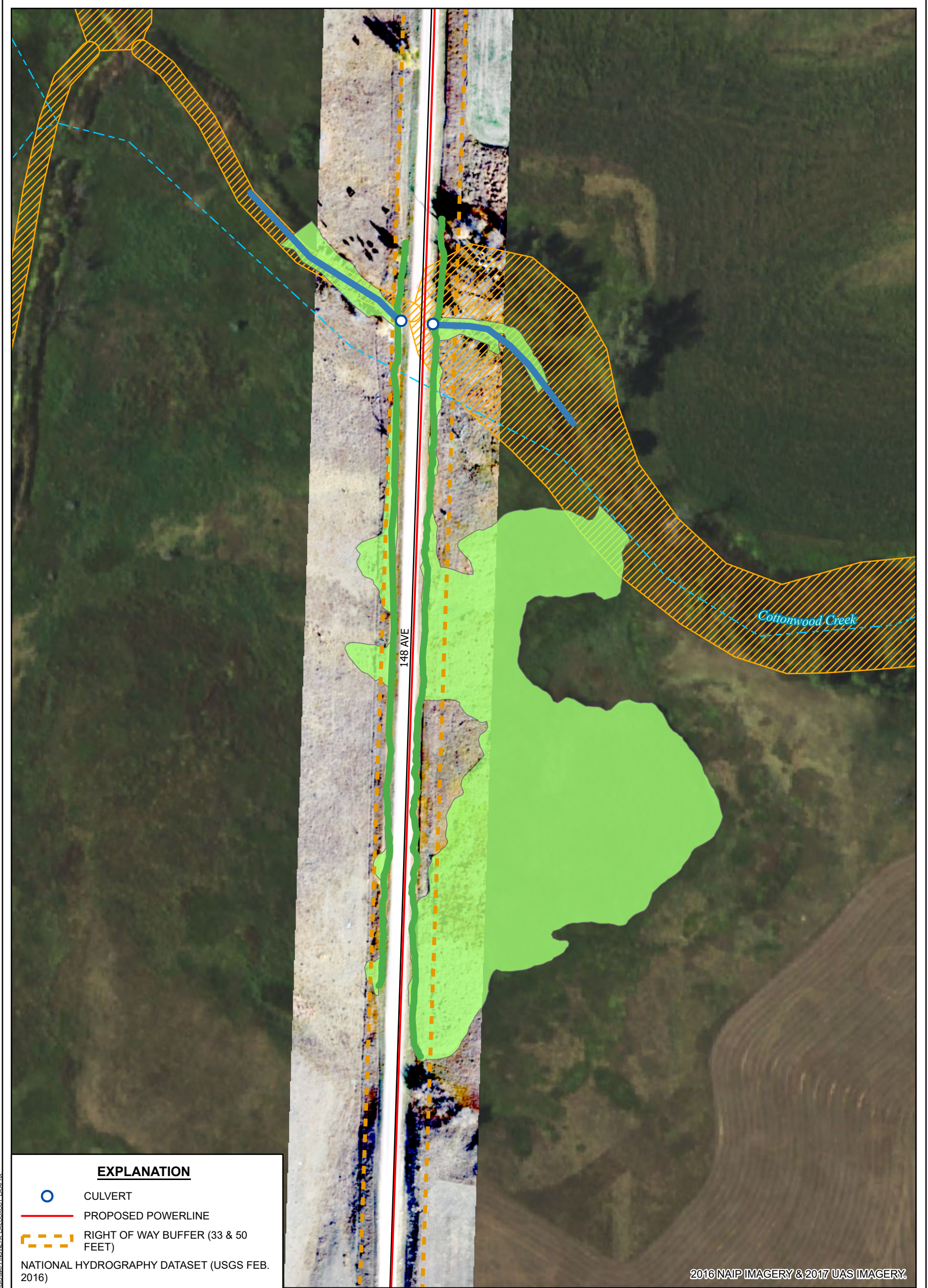
FIGURE 3-4

ANGUSTORA CANAL CROSSING

LOOKOUT SOLAR PARK I
CUSTER & OGLALA LAKOTA COUNTIES, SD

Drawn By: BR | Checked By: ES | Scale: 1" = 100' | Date: 9/17/19 | File: Fig3-4_WetlandsPortrait

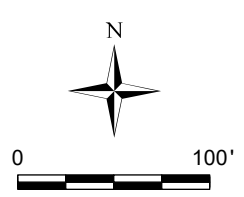
W:\TRIHYRO\COMMENTS\LOOKOUT\ES\LABR\KIGIS\MAP\ENGINEER_FINAL\LOOKOUT_LA\APR19



2016 NAIP IMAGERY & 2017 UAS IMAGERY

EXPLANATION

- CULVERT
- PROPOSED POWERLINE
- RIGHT OF WAY BUFFER (33 & 50 FEET)
- NATIONAL HYDROGRAPHY DATASET (USGS FEB. 2016)
- - - INTERMITTENT STREAM
- NATIONAL WETLAND INVENTORY (USFWS OCT. 2017)
- FIELD-DELINEATED WETLANDS
- INTERMITTENT STREAM
- DITCH
- FRESHWATER EMERGENT WETLAND

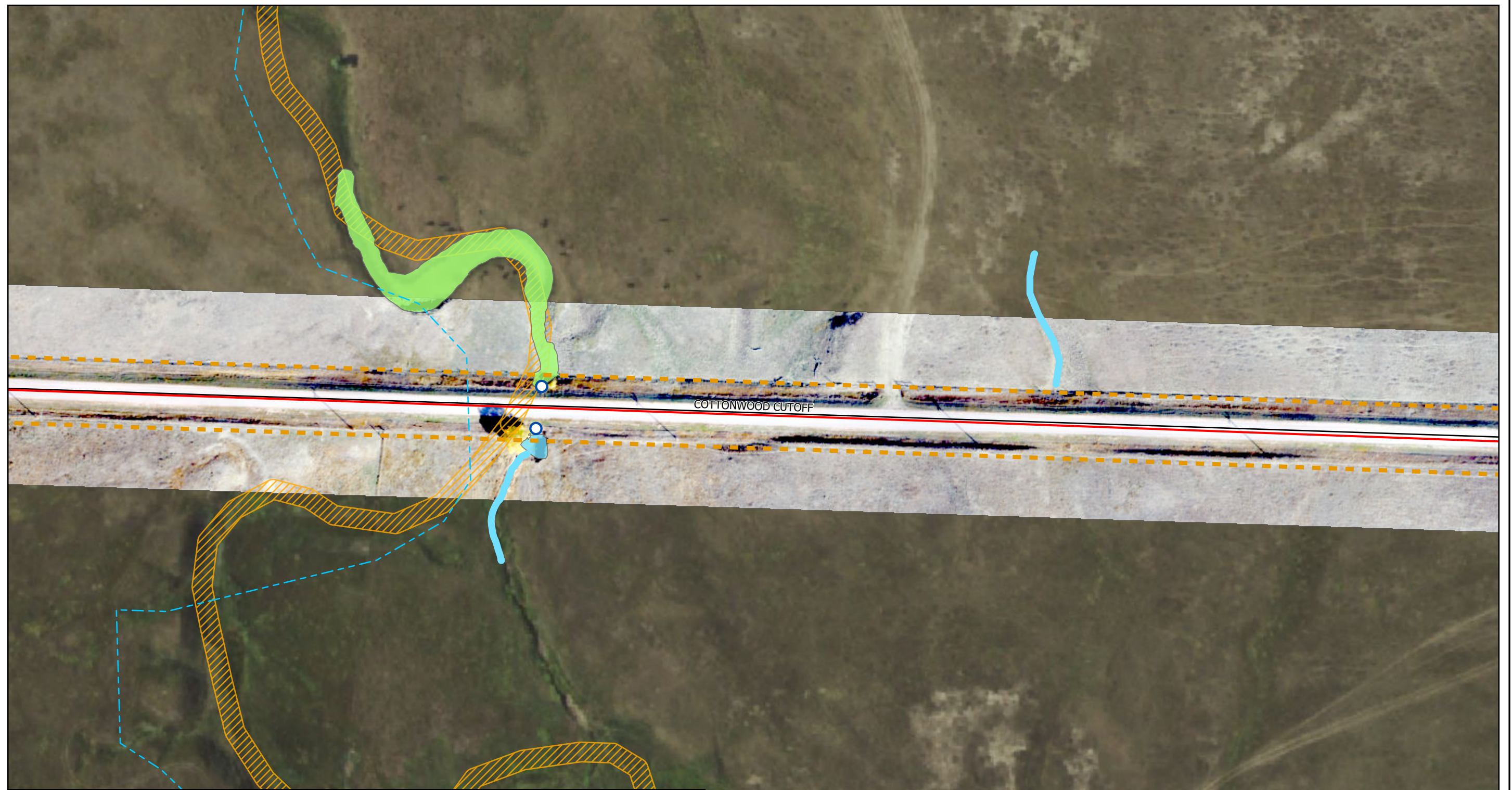



Trihydro
 CORPORATION
 1252 Commerce Drive
 Laramie, WY 82070
 www.trihydro.com
 (P) 307/745.7474 (F) 307/745.7729

FIGURE 3-5			
COTTONWOOD CREEK CROSSING			
LOOKOUT SOLAR PARK I			
CUSTER & OGLALA LAKOTA COUNTIES, SD			
Drawn By: BR	Checked By: ES	Scale: 1" = 100'	Date: 9/17/19
File: Fig3-4_WetlandsPortrait			









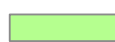

W:\TRIH\HYDRO\COM\CLIENTS\LOOKOUT\SOLAR\BARR\GIS\MAP\ENGINEER\EA\LOOKOUT_LEA\APRY

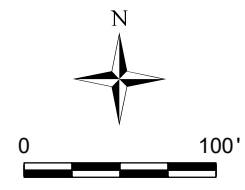
TRIHYDRO.COM\CLIENTS\LOOKOUTSOLARPARK\GIS\MAPPING\NEPA_EA\LOOKOUT_EA.APRX



2016 NAIP IMAGERY & 2017 UAS IMAGERY.

EXPLANATION

-  CULVERT
-  PROPOSED POWERLINE
-  RIGHT OF WAY BUFFER (33 & 50 FEET)
-  NATIONAL HYDROGRAPHY DATASET (USGS FEB. 2016)
-  INTERMITTENT STREAM
-  NATIONAL WETLAND INVENTORY (USFWS OCT. 2017)
-  FIELD-DELINEATED WETLANDS
-  EPHEMERAL STREAM
-  FRESHWATER EMERGENT WETLAND
-  POND



Trihydro
CORPORATION
1252 Commerce Drive
Laramie, WY 82070
www.trihydro.com
(P) 307/745.7474 (F) 307/745.7729

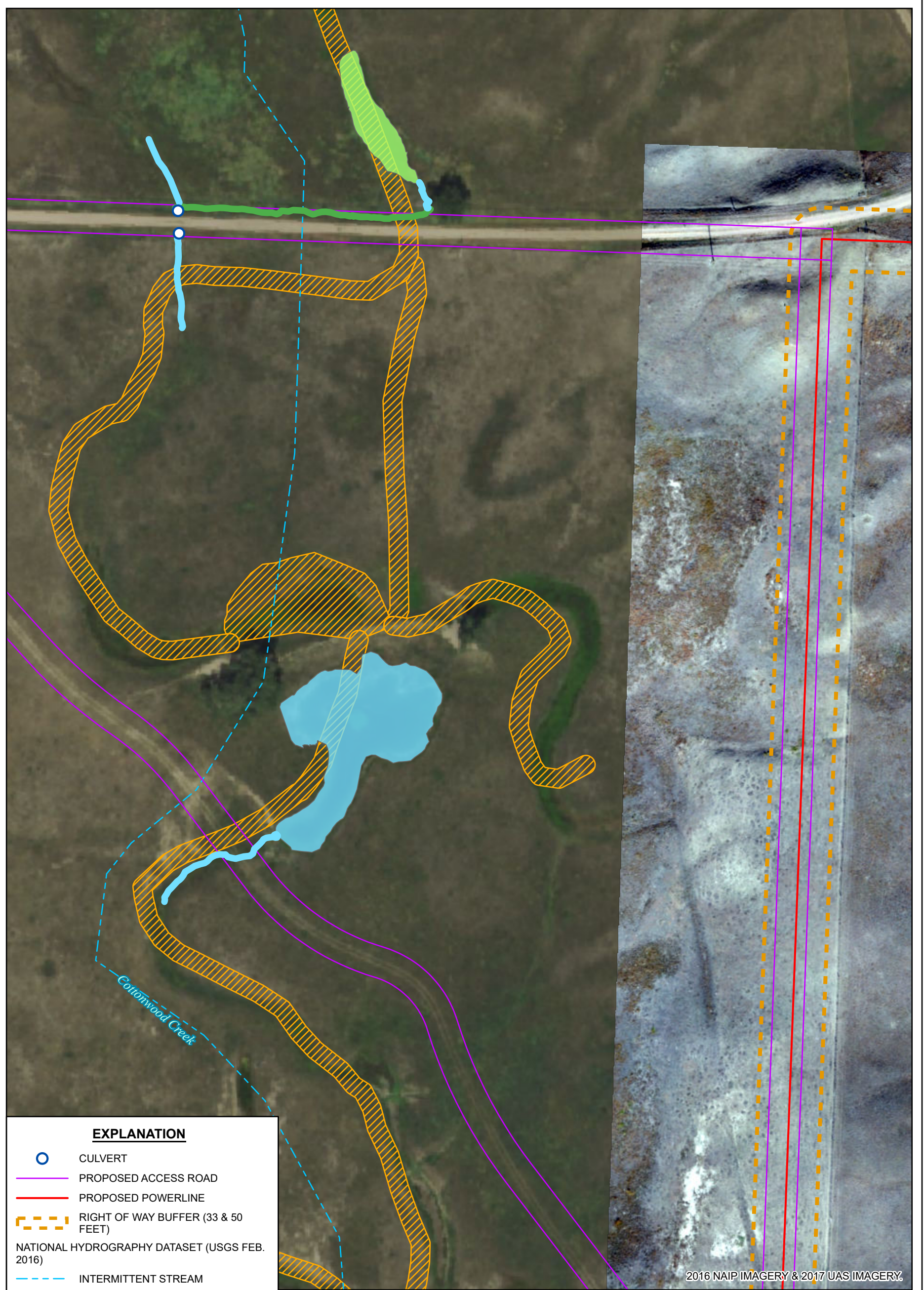
FIGURE 3-6

COTTONWOOD CUTOFF WETLAND CROSSING

**LOOKOUT SOLAR PARK I
CUSTER & OGLALA LAKOTA COUNTIES, SD**

Drawn By: BR | Checked By: ES | Scale: 1" = 100' | Date: 9/17/19 | File: Fig3-3_WetlandsLandscape

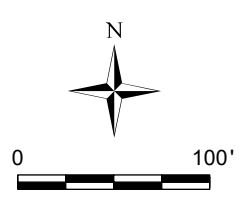
TRIHYDRO.COM\CLIENTS\LOOKOUTSOLARPARK\GIS\MAPPING\NEEA_EAN\LOOKOUT_LA\APRKY



2016 NAIP IMAGERY & 2017 UAS IMAGERY

EXPLANATION

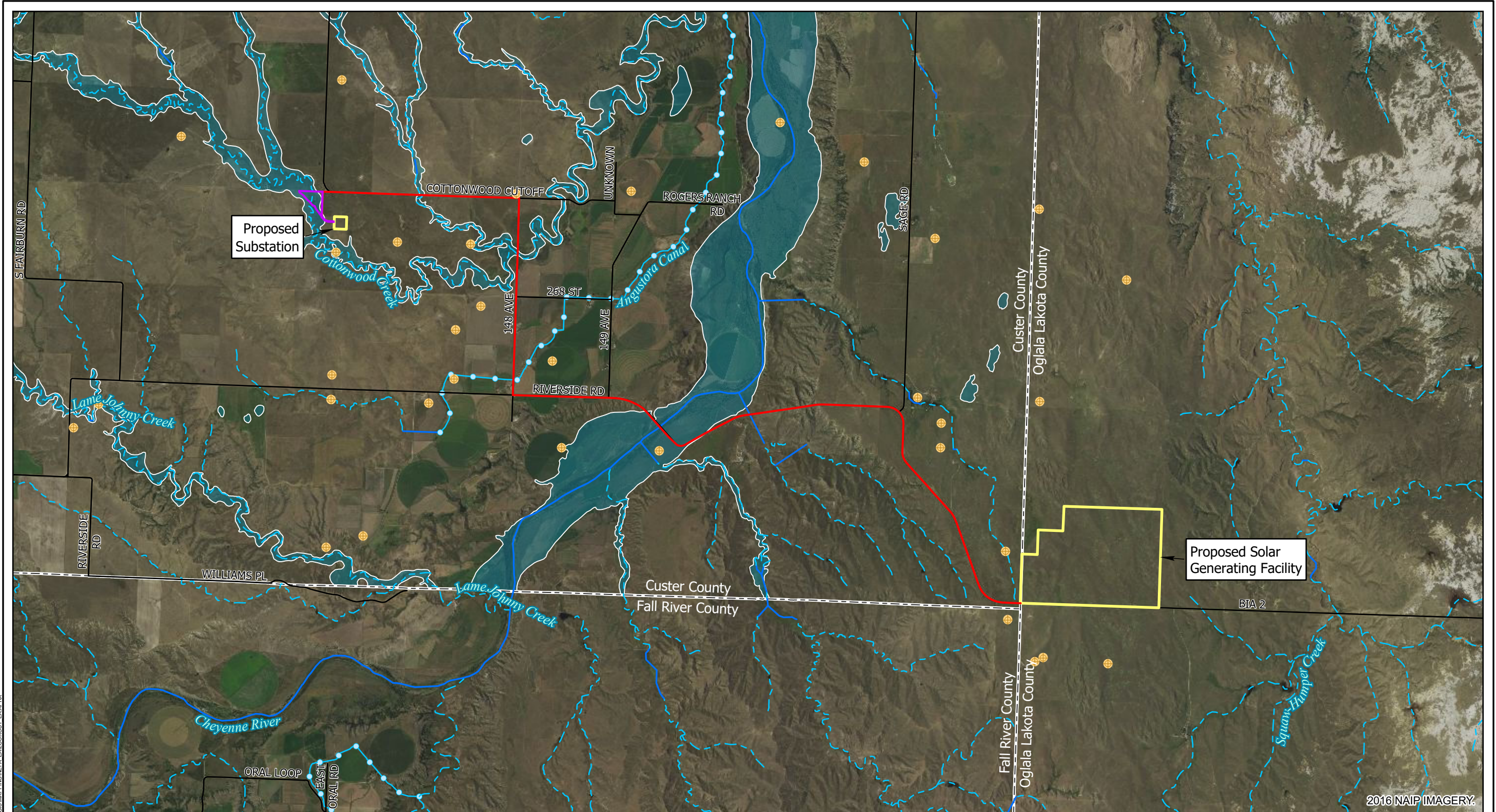
- CULVERT
- PROPOSED ACCESS ROAD
- PROPOSED POWERLINE
- RIGHT OF WAY BUFFER (33 & 50 FEET)
- NATIONAL HYDROGRAPHY DATASET (USGS FEB. 2016)
- INTERMITTENT STREAM
- NATIONAL WETLAND INVENTORY (USFWS OCT. 2017)
- FIELD-DELINEATED WETLANDS**
- EPHEMERAL STREAM
- DITCH
- FRESHWATER EMERGENT WETLAND
- POND



Trihydro
CORPORATION

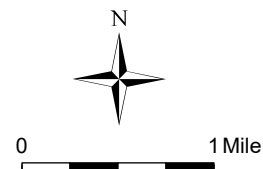
1252 Commerce Drive
Laramie, WY 82070
www.trihydro.com
(P) 307/745.7474 (F) 307/745.7729

FIGURE 3-7			
SUBSTATION ACCESS AREA WETLANDS			
LOOKOUT SOLAR PARK I CUSTER & OGLALA LAKOTA COUNTIES, SD			
Drawn By: BR	Checked By: ES	Scale: 1" = 100'	Date: 9/17/19
File: Fig3-4_WetlandsPortrait			



EXPLANATION

- PROJECT AREA
- WATER WELL (DENR 2019)
- PROPOSED ACCESS ROAD
- PROPOSED POWERLINE
- NATIONAL HYDROGRAPHY DATASET (USGS FEB. 2016)
- PERENNIAL STREAM
- INTERMITTENT STREAM
- CANAL
- 1% ANNUAL CHANCE FLOOD HAZARD (FEMA 2019)



Trihydro
CORPORATION
1252 Commerce Drive
Laramie, WY 82070
www.trihydro.com
(P) 307/745.7474 (F) 307/745.7729

FIGURE 3-8

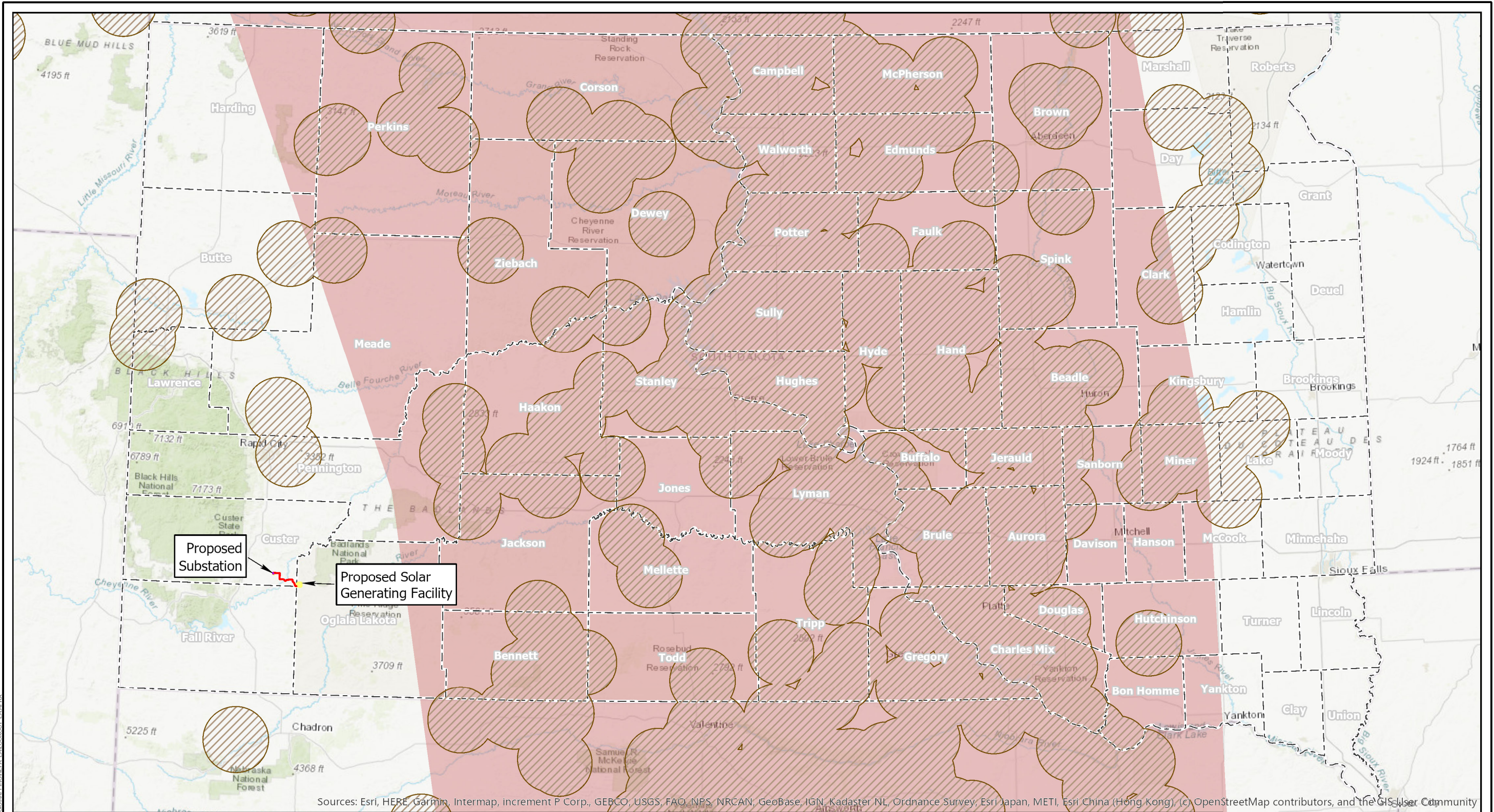
FEMA FLOOD ZONES IN THE PROJECT AREA

LOOKOUT SOLAR PARK I
CUSTER & OGLALA LAKOTA COUNTIES, SD

Drawn By: BR	Checked By: JW	Scale: 1" = 1 Mile	Date: 9/17/19
File: Fig3-8_Floodplains			





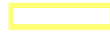
\\TRIHYRO.COM\CLIENTS\LOOKOUTSOLARPARK\GIS\MAPPING\NEPA_EA\LOOKOUT_EA.APRX

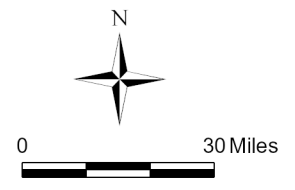
2016 NAIP IMAGERY.



Sources: Esri, HERE, Garmin, Intermap, increment P Corp., GEBCO, USGS, FAO, NPS, NRCAN, GeoBase, IGN, Kadaster NL, Ordnance Survey, Esri Japan, METI, Esri China (Hong Kong), (c) OpenStreetMap contributors, and the GIS User Community

EXPLANATION

-  PROPOSED ACCESS ROAD
-  PROPOSED POWERLINE
-  10 MILE BUFFER OF WHOOPING CRANE SIGHTING
-  WHOOPING CRANE MIGRATION CORRIDOR
-  PROJECT AREA

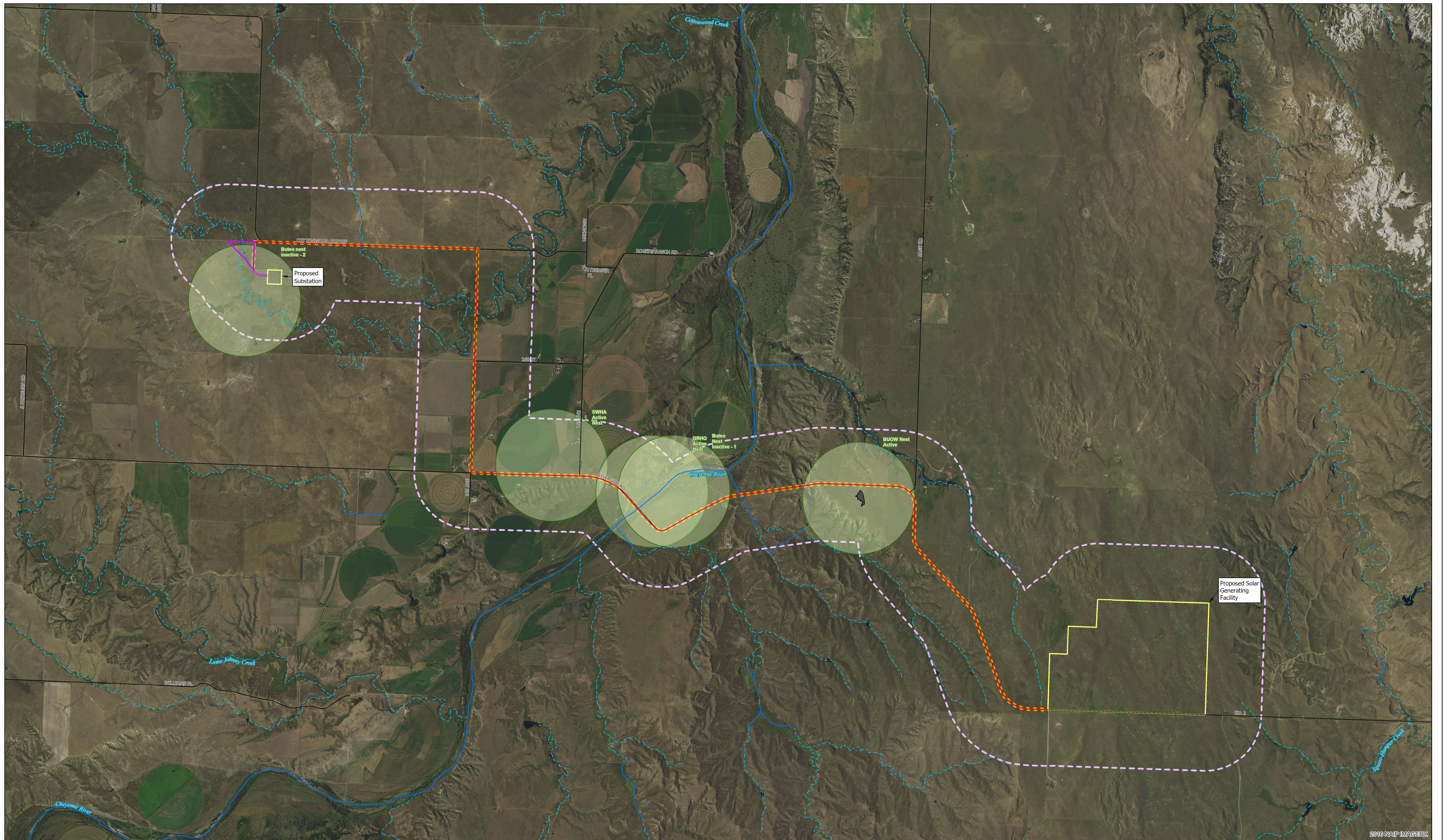



1252 Commerce Drive
Laramie, WY 82070
www.trihydro.com
(P) 307/745.7474 (F) 307/745.7729

FIGURE 3-9

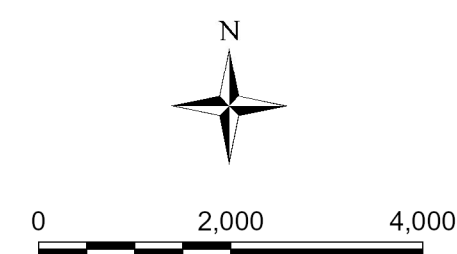
WHOOPING CRANE MIGRATION CORRIDOR

LOOKOUT SOLAR PARK I
CUSTER & OGLALA LAKOTA COUNTIES, SD



EXPLANATION

- PROPOSED ACCESS ROAD
- PROPOSED POWERLINE
- NATIONAL HYDROGRAPHY DATASET (USGS FEB. 2016)
- PERENNIAL STREAM
- INTERMITTENT STREAM
- PROJECT AREA
- RIGHT OF WAY BUFFER (33 & 50 FEET)
- 1/2 MILE BUFFER ZONE AROUND ACCESS ROAD, PROPERTY BOUNDARIES, AND POWER LINES
- BLACK-TAILED PRAIRIE DOG COLONY
- APPROXIMATE RAPTOR NEST LOCATION



Trihydro
CORPORATION
1252 Commerce Drive
Laramie, WY 82070
www.trihydro.com
(P) 307.745.7474 (F) 307.745.7729

FIGURE 3-10
RAPTOR NESTS IN THE PROJECT AREA
LOOKOUT SOLAR PARK I
CUSTER & OGLALA LAKOTA COUNTIES, SD

Drawn By: BR Checked By: JW Scale: 1" = 2,000' Date: 9/17/19 File: Fig3-10_RaptorNests



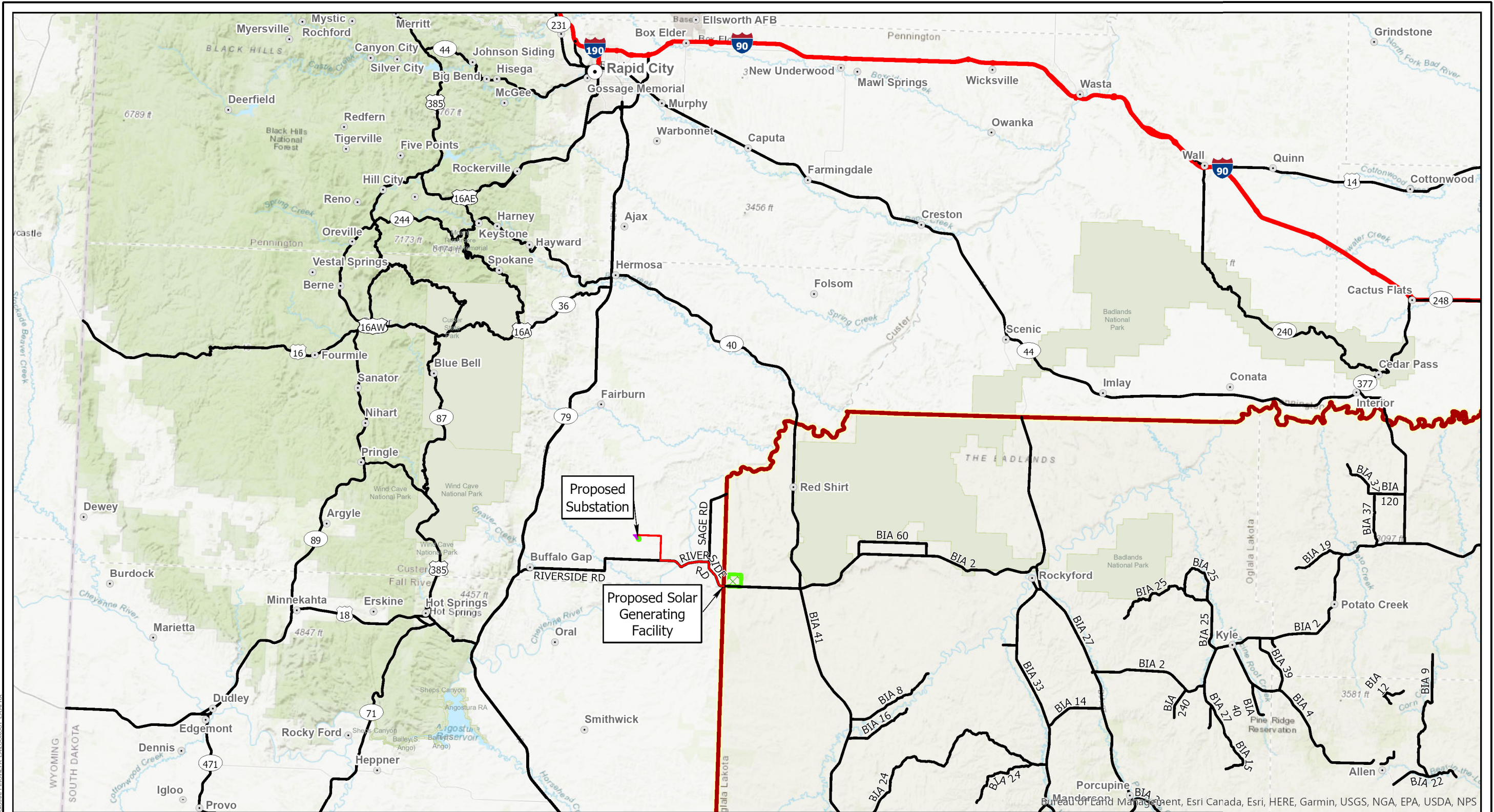
**Figure 3-15. View of the Southern Boundary of the Solar Generating Facility from BIA
Route 2
Facing North**



**Figure 3-16. View of the Approximate Middle of the Solar Generating Facility
Facing South**

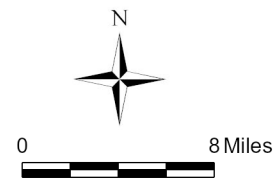


**Figure 3-17. View of the Northern Boundary of the Solar Generating Facility
Facing Southwest**



EXPLANATION

- PROPOSED POWERLINE
- PROPOSED ACCESS ROAD
- INTERSTATE HIGHWAY
- STATE/FEDERAL HIGHWAY
- XXXXXX PROJECT AREA
- RESERVATION BOUNDARY
- STATE PARK OR NATIONAL PARK LAND



Trihydro
CORPORATION
1252 Commerce Drive
Laramie, WY 82070
www.trihydro.com
(P) 307/745.7474 (F) 307/745.7729

FIGURE 3-14

TRANSPORTATION NETWORK

LOOKOUT SOLAR PARK I
CUSTER & OGLALA LAKOTA COUNTIES, SD

Drawn By: BR	Checked By: ES	Scale: 1" = 8 Miles	Date: 9/17/19
File: Fig3-14_Transportation			

\\TRIHYRO.COM\Clients\SD\LOOKOUT\Solar\AR\BARR\GIS\MAPS\FIGURE 3-14_TRANSPORTATION.FMAPX