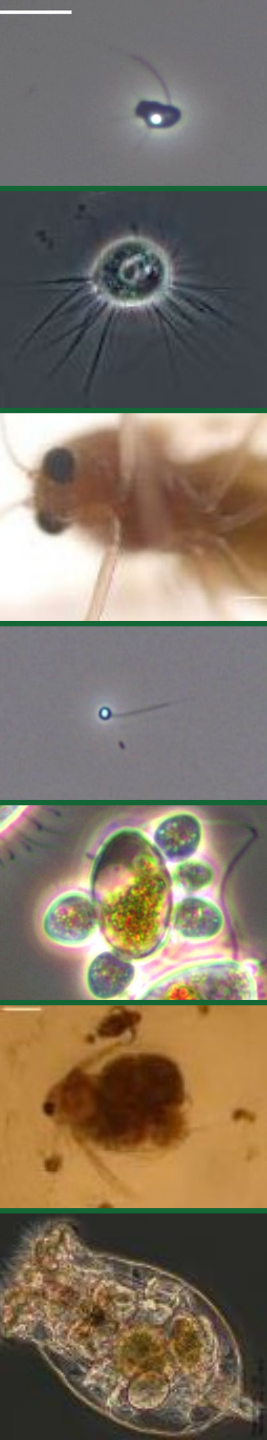


# Barriers to Scale: Algae Crop Protection Workshop

Session 3: Pest Models: Understanding Pest Life Cycles and  
Infection Mechanisms

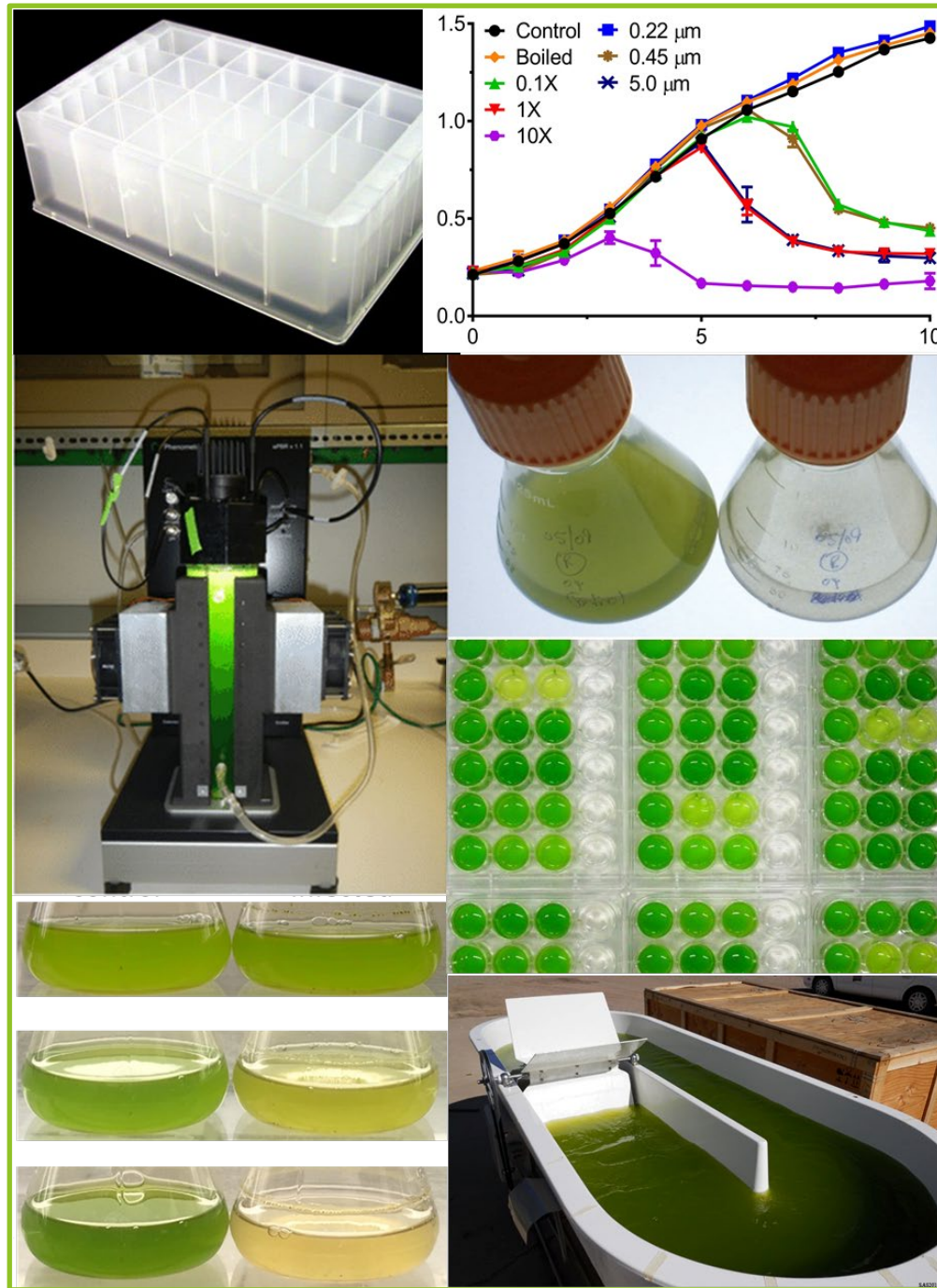
Moderator: Philip Lee

*Rapporteur: Blake Hovde*



# Pest Models

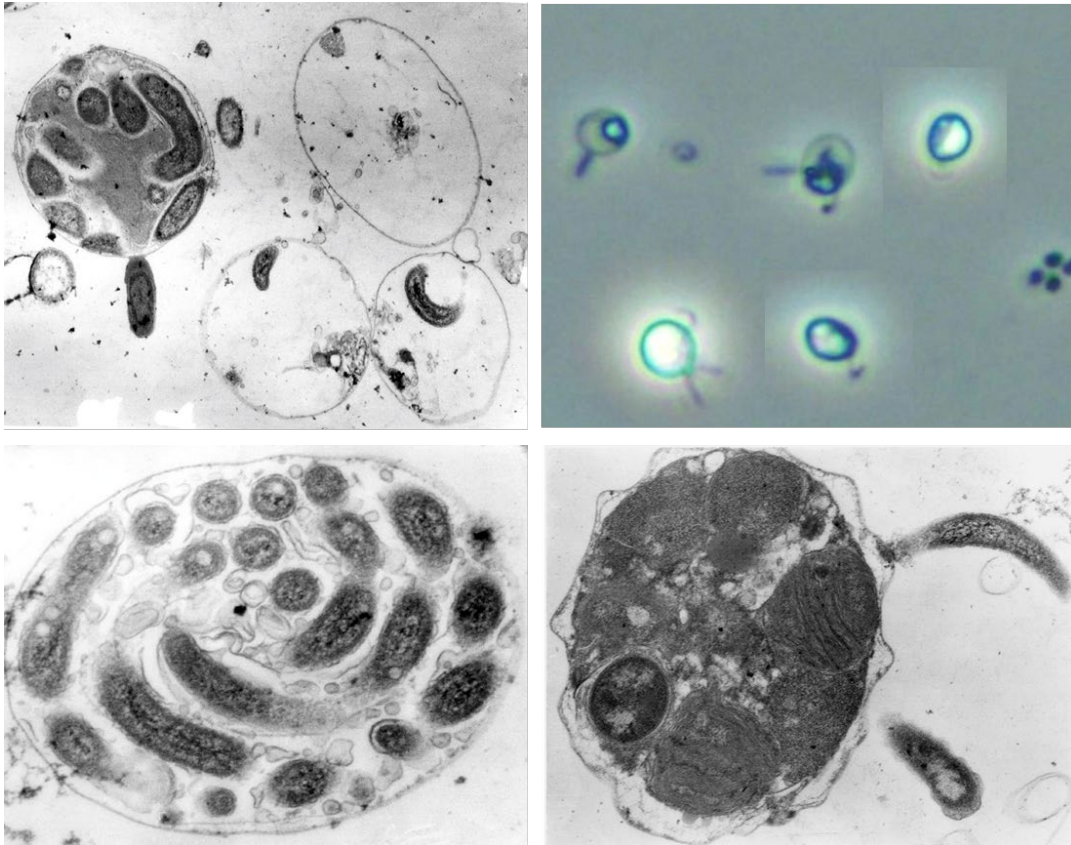
- ▶ Pest Model can mean different things
- ▶ “Models” what happens in the field
- ▶ Can be used to “model” approaches to be used with other of future pests
- ▶ Diversity of pests leads to diversity of methods, tools etc.
- ▶ Anything that allows research questions to be asked
  - ▶ What is it?
  - ▶ How can we mitigate it?
  - ▶ Foundational to detailed life cycle analysis
- ▶ Multiple identical or closely related pest species are being found over time



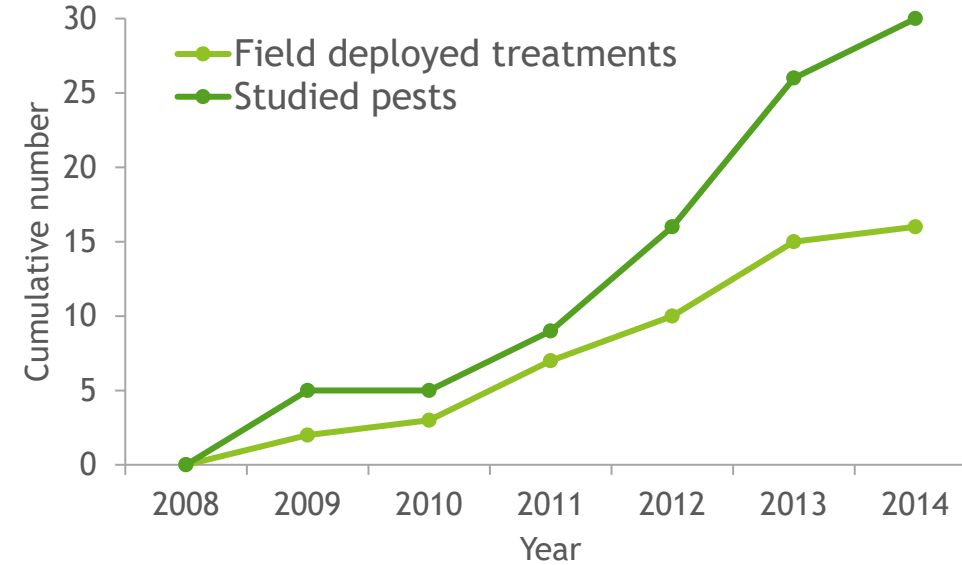
# Building from models

Observations from Sapphire Energy:

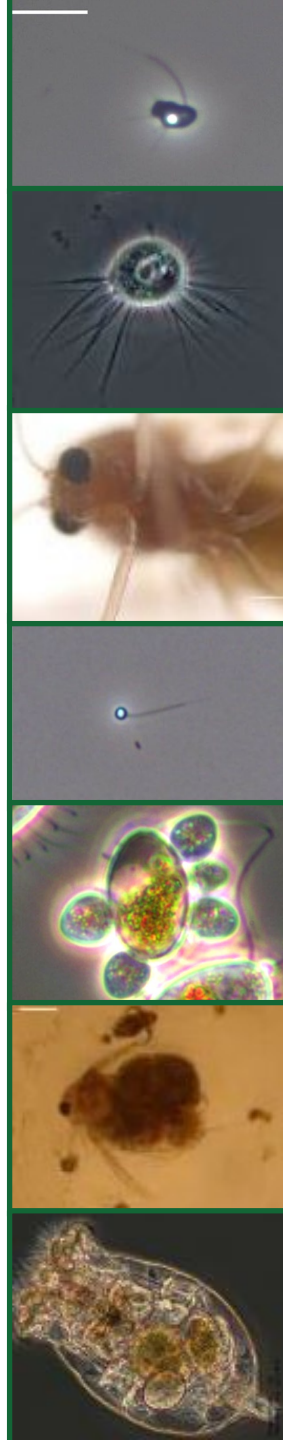
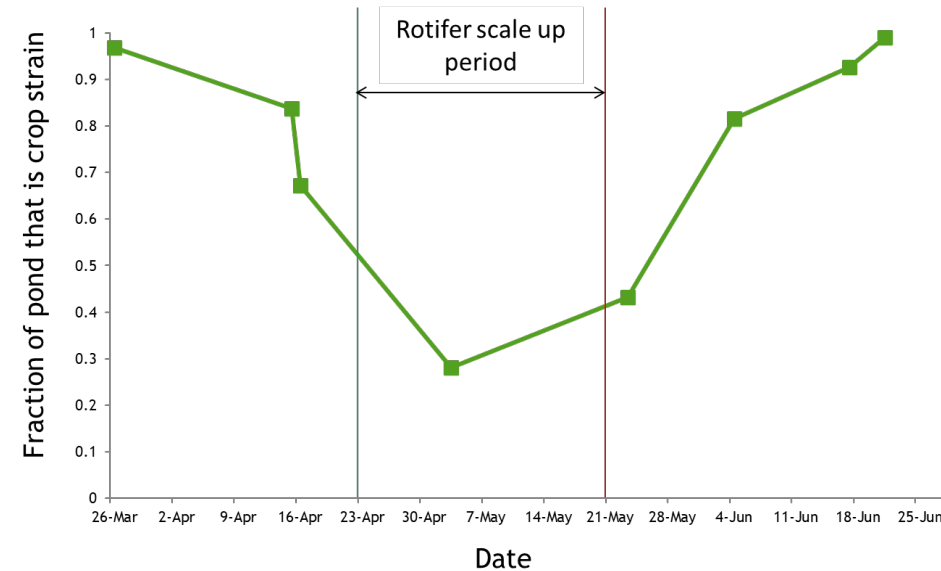
- ▶ Working with early pests had a direct impact on future work
- ▶ Value in working on non-model models?



Cumulative Pests and Treatments



Deploying Rotifers for Weed Control



# Panelists



- ▶ Todd Lane
  - ▶ Sandia National Lab
- ▶ Shawn Starkenburg
  - ▶ Los Alamos National Lab
- ▶ Timothy James
  - ▶ University of Michigan
  - ▶ Collection of Zoosporic Eufungi at the University of Michigan (CZEUM)

